

Repair And Addition to RPD •

Any need for repairs or additions will be the result of unforeseen complications arising in the abutments of in other teeth in the arch, or to breakage or distortion of the denture through accident or careless handling by the patient rather than a faulty design or construction.

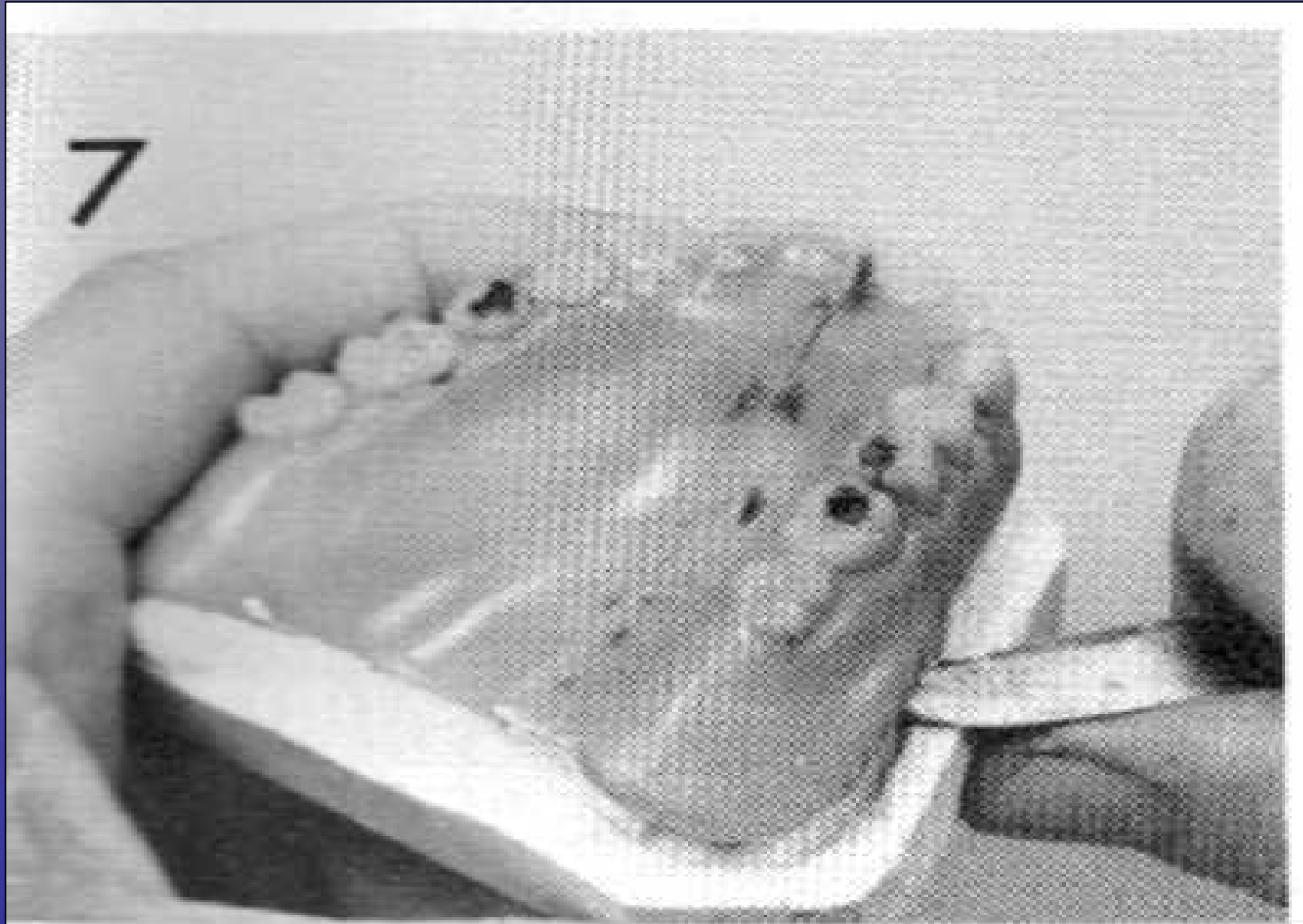


Repair of midline fracture

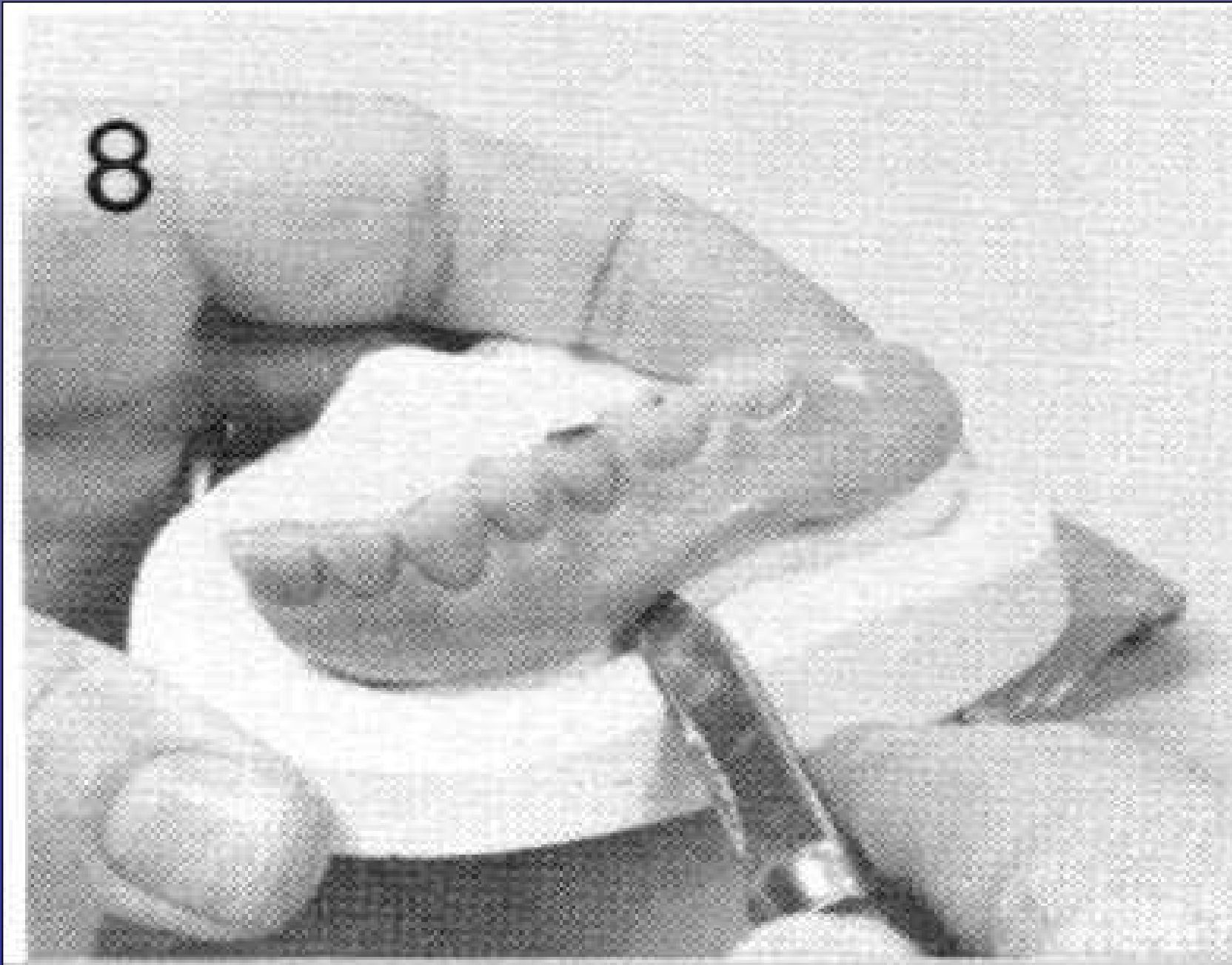
Repair procedure

- 1- Fractured dental in
midline assembly
 - Wooden match stick
 - Blocking
 - Pumice + Cotton
 - separating medium
 - (zig-zag) form grooves
of 8-10mm
 - re-assembling

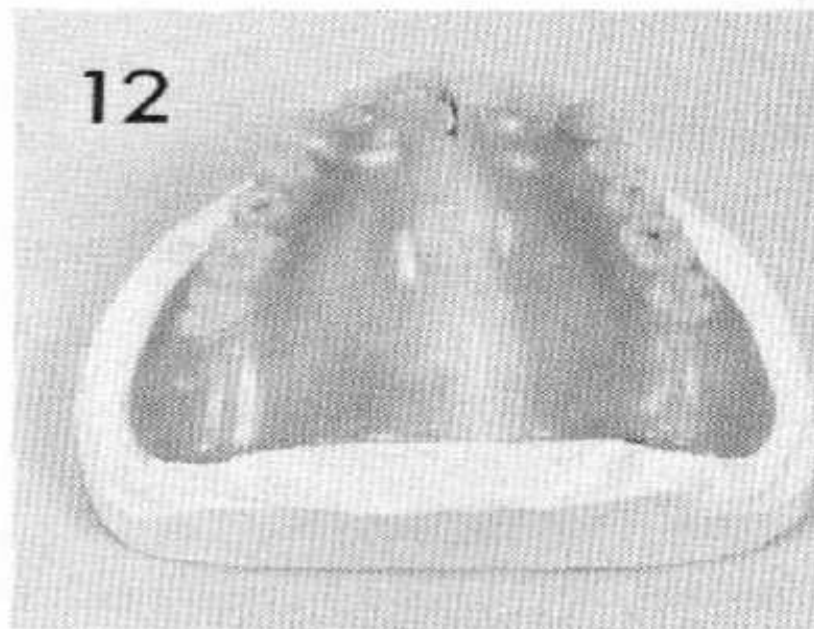
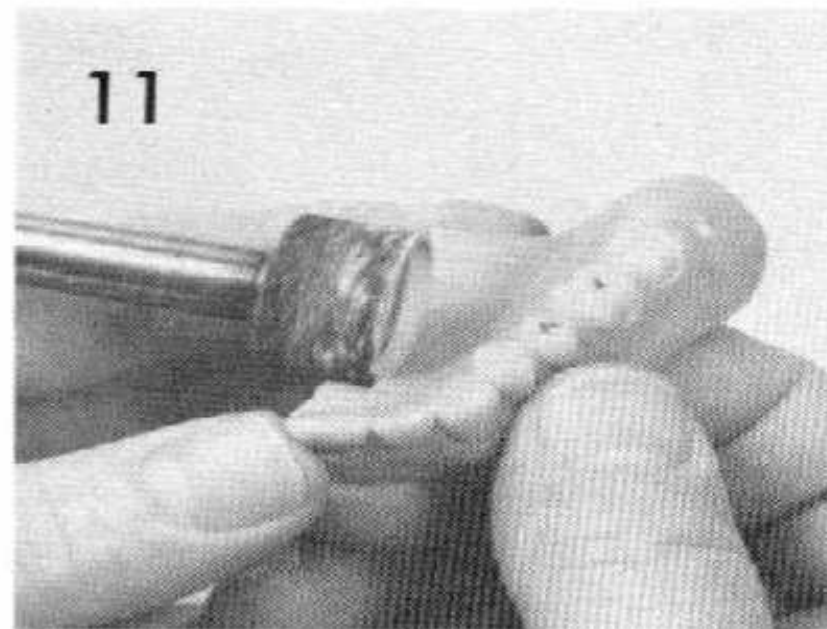
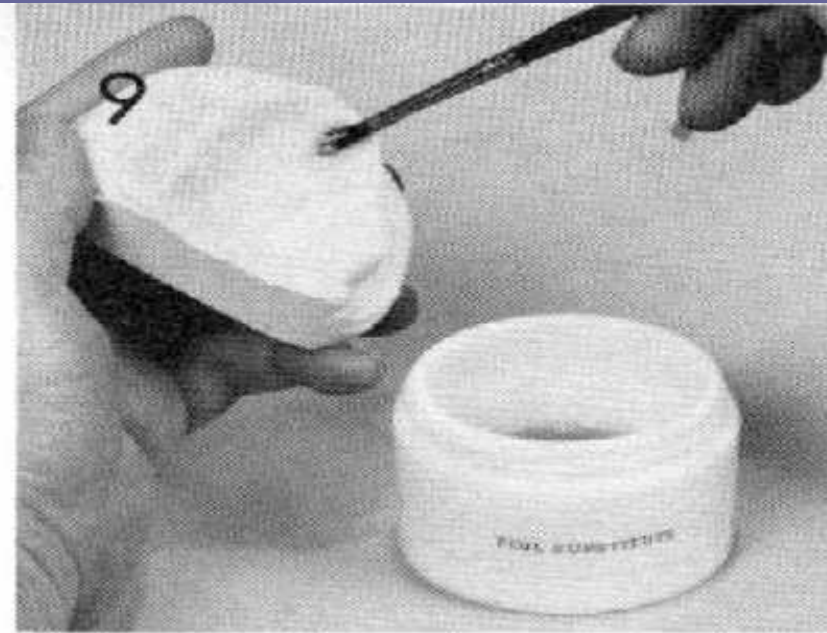




The sticks removed after setting of the cast



The fractured pieces separated



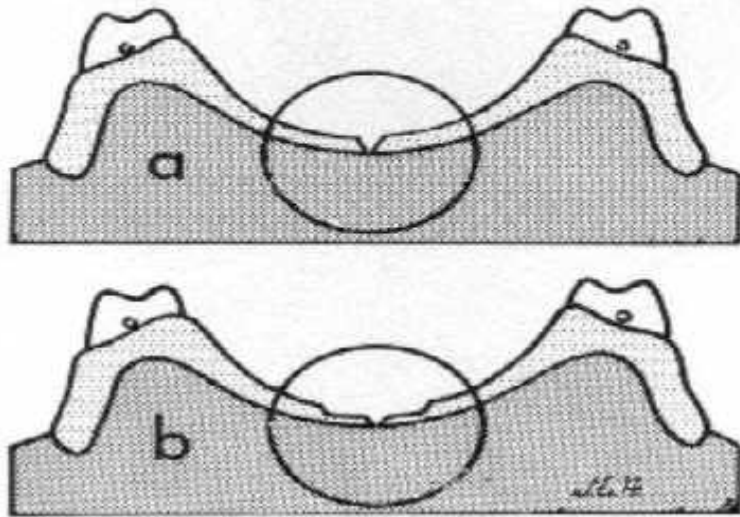
A polished surface reduced with a zig-zag grooves of 8-10mm



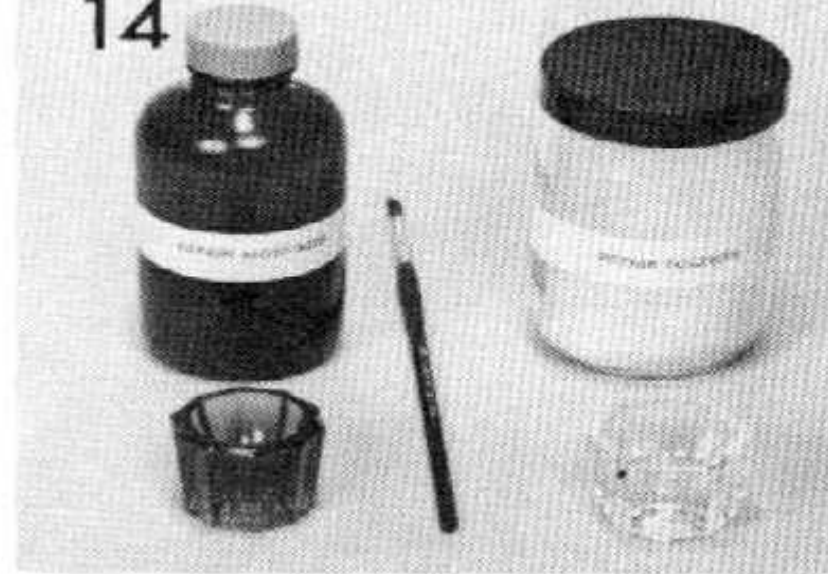
Sprinkle-on Method



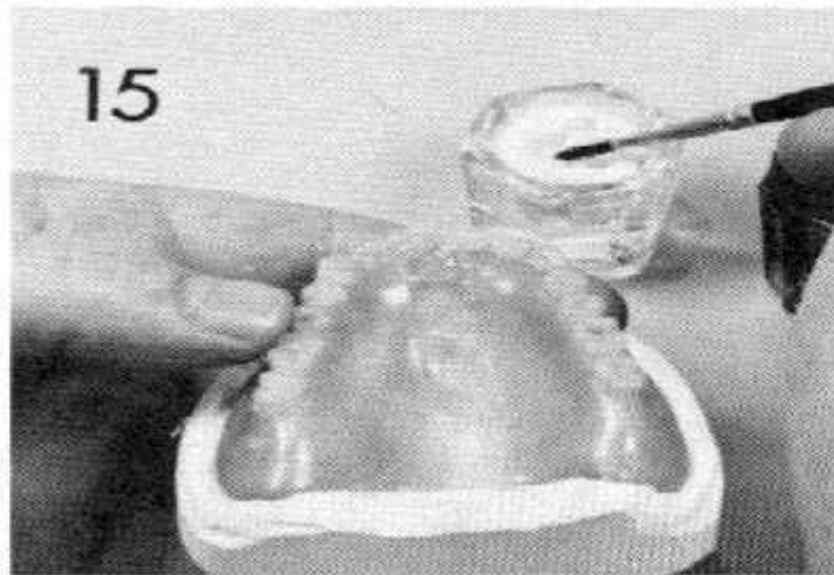
13



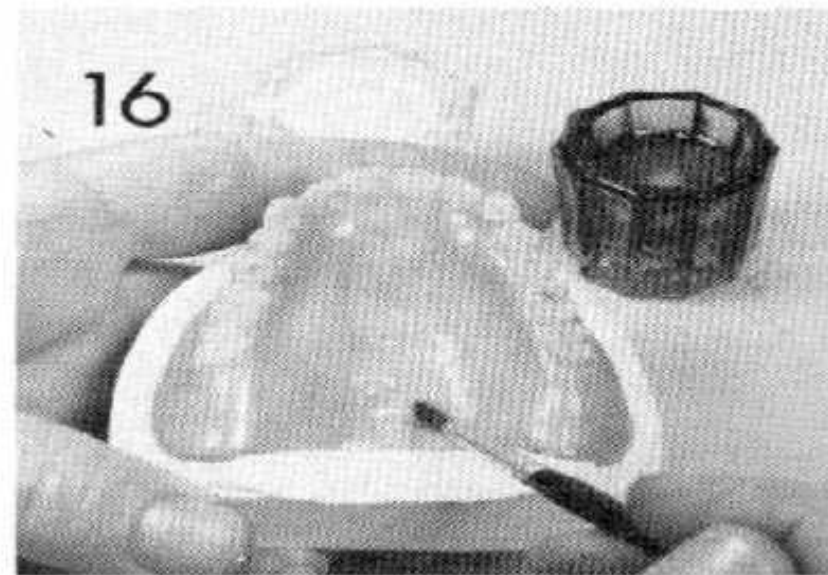
14



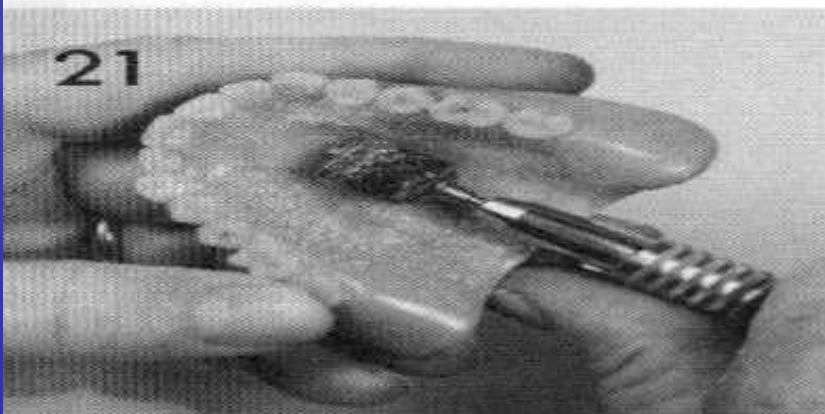
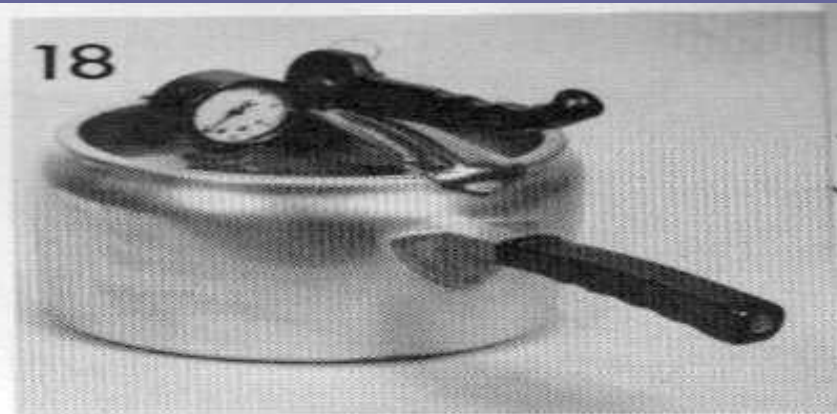
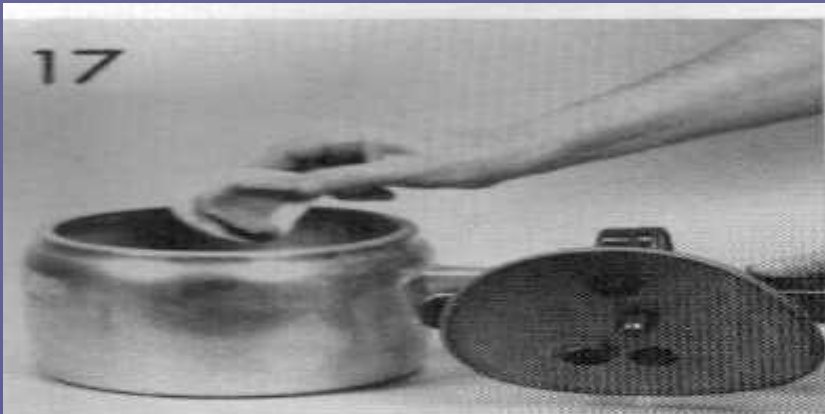
15



16



Applying a self cure acrylic resin by thin mix or sprinkle method



Curing of the denture with finishing and polishing

Acrylic



Thin mix

sprinkle on method

Pressure curing unit (1000c) X 10 min

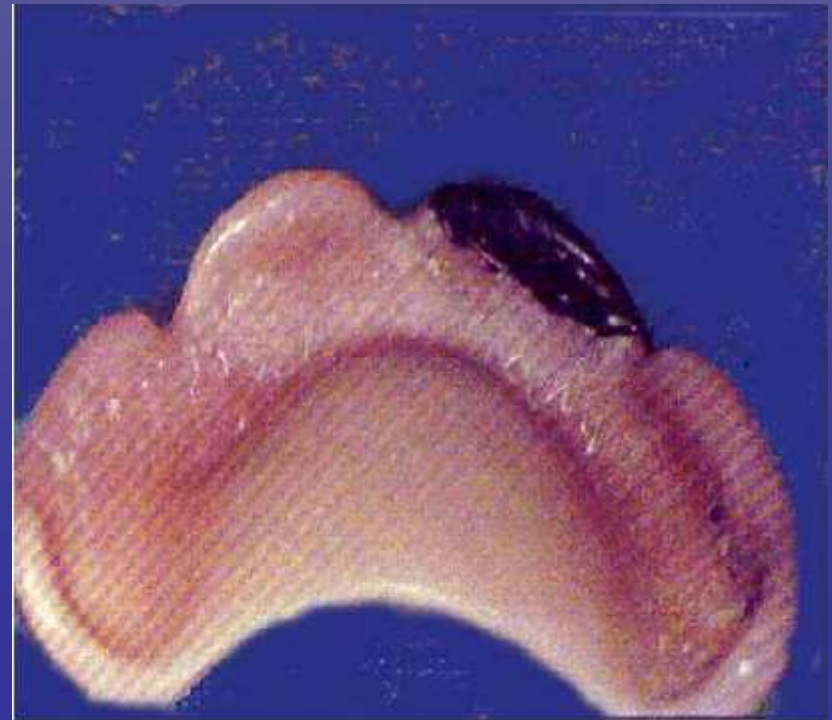
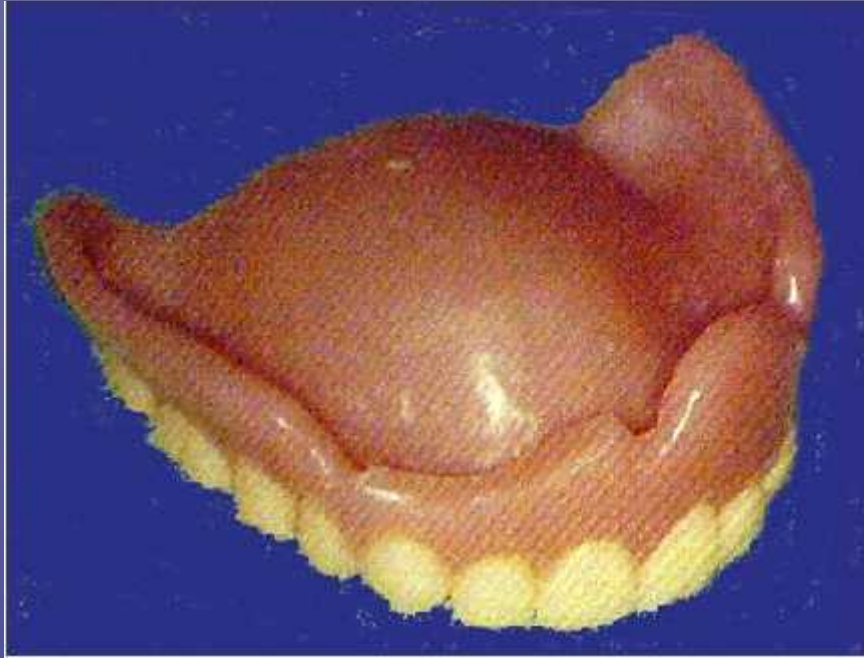
1. Fractured piece

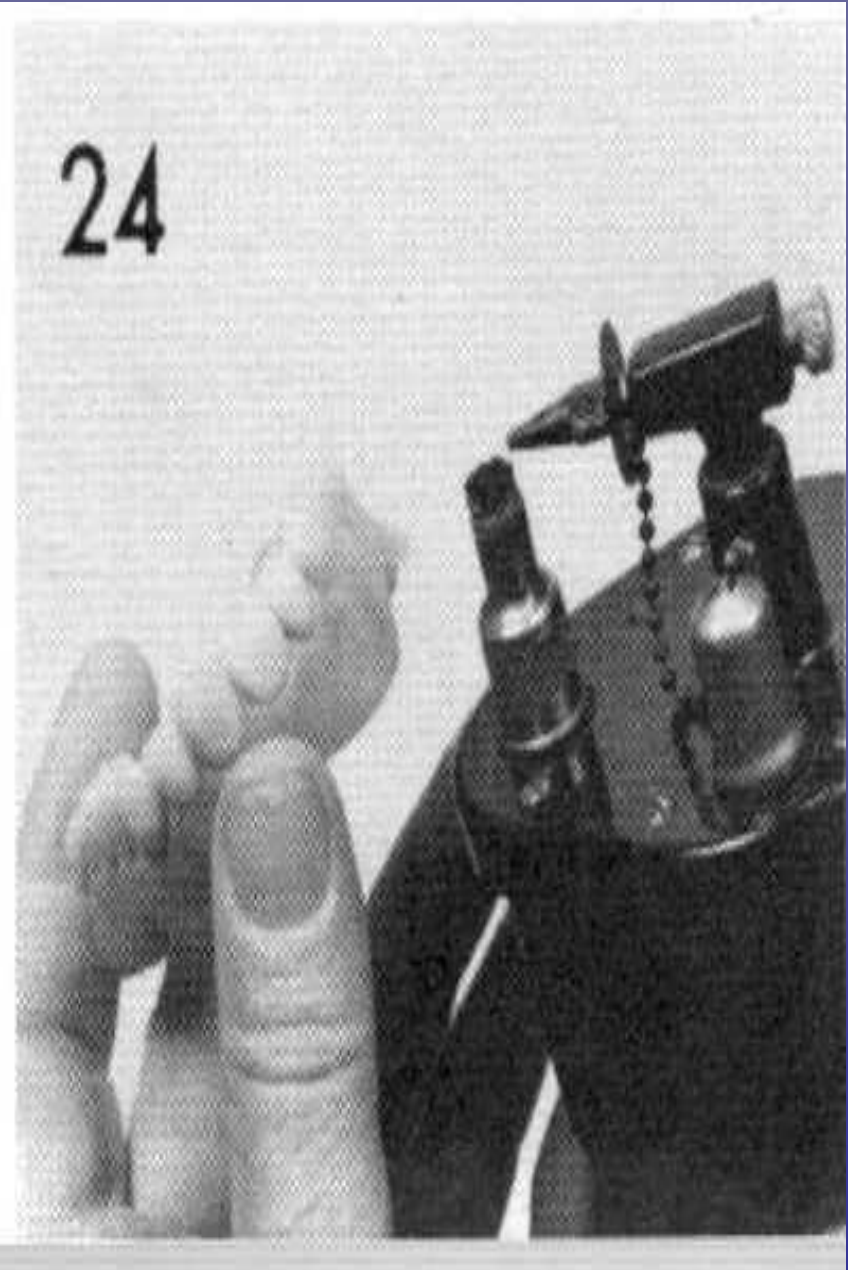
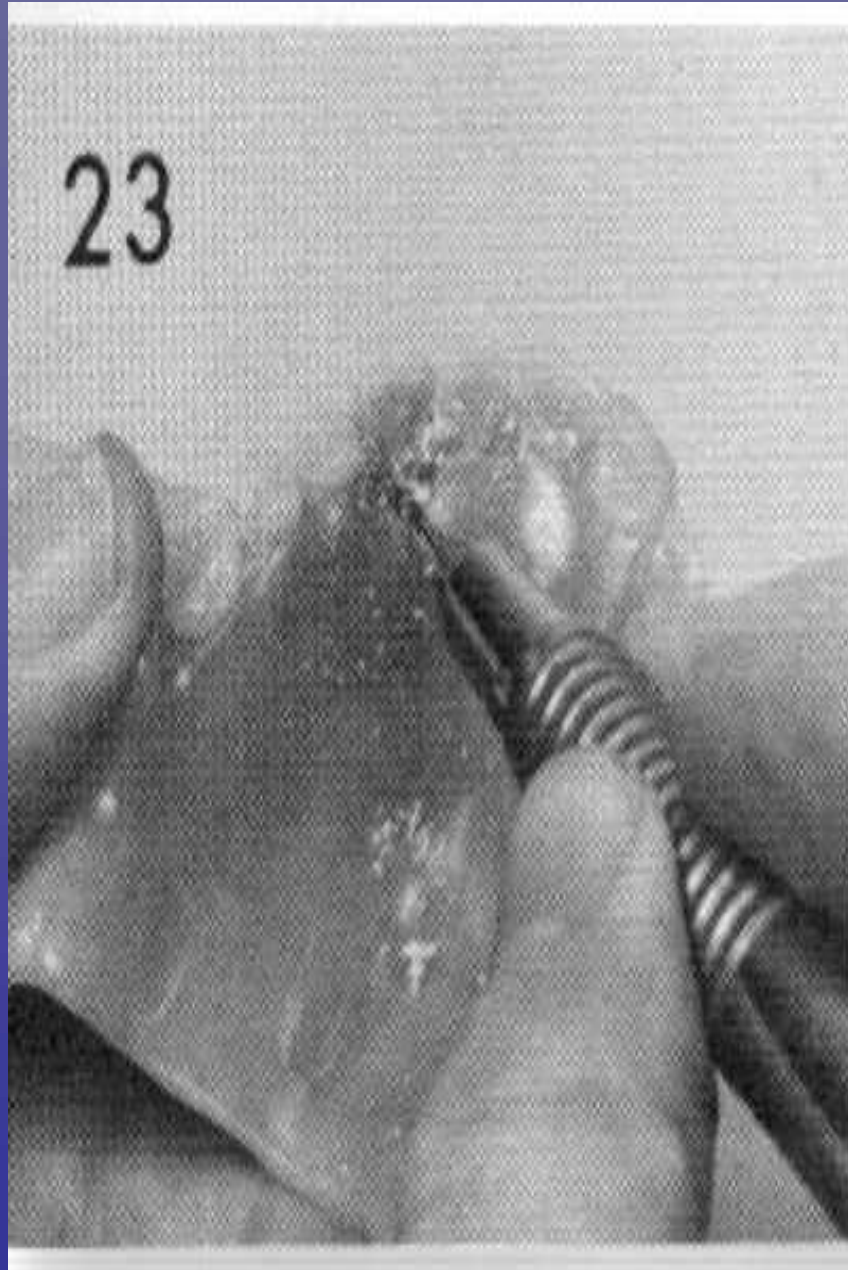
2. Lost

I. small

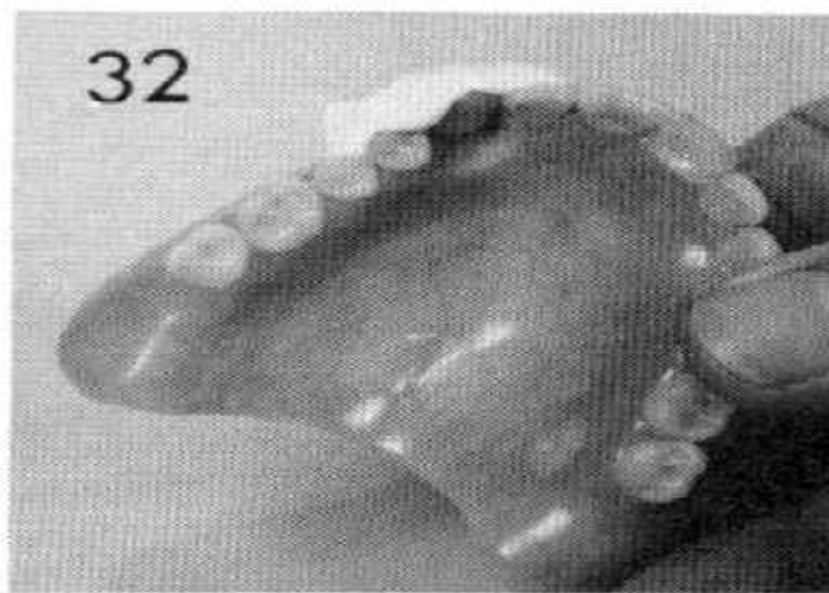
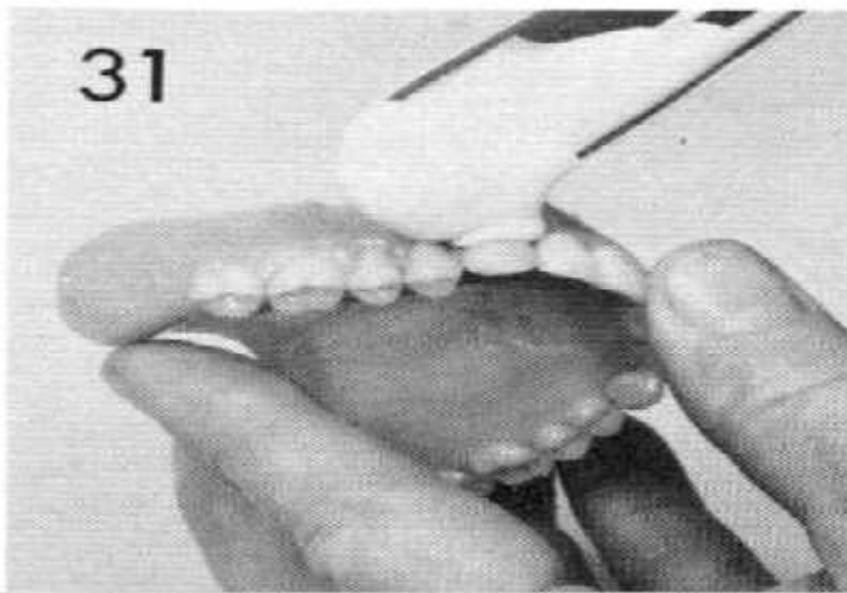
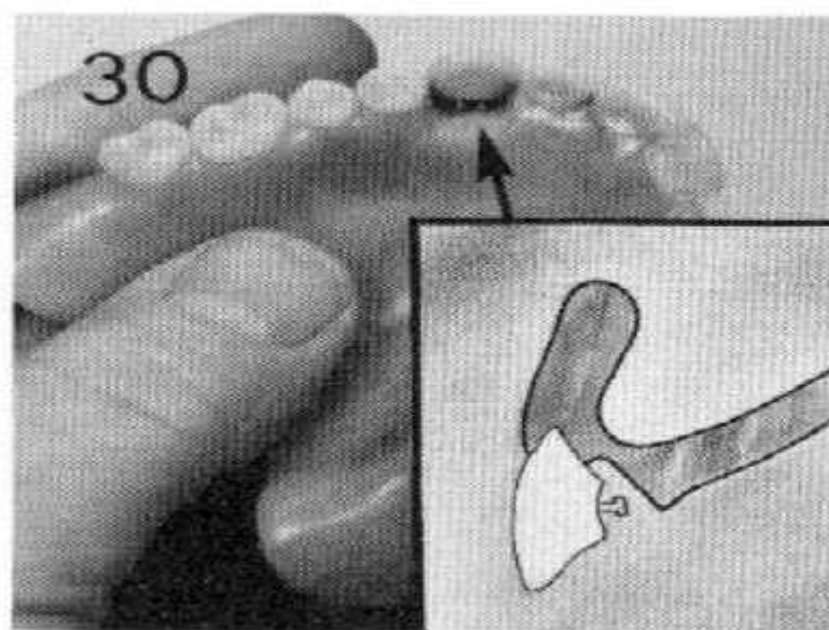
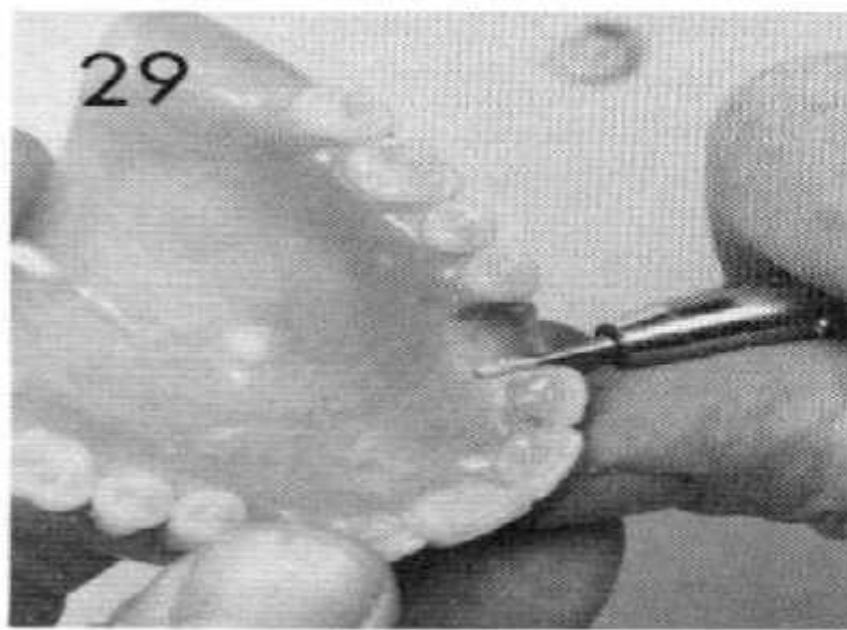
II. Several small areas

III. Extensive

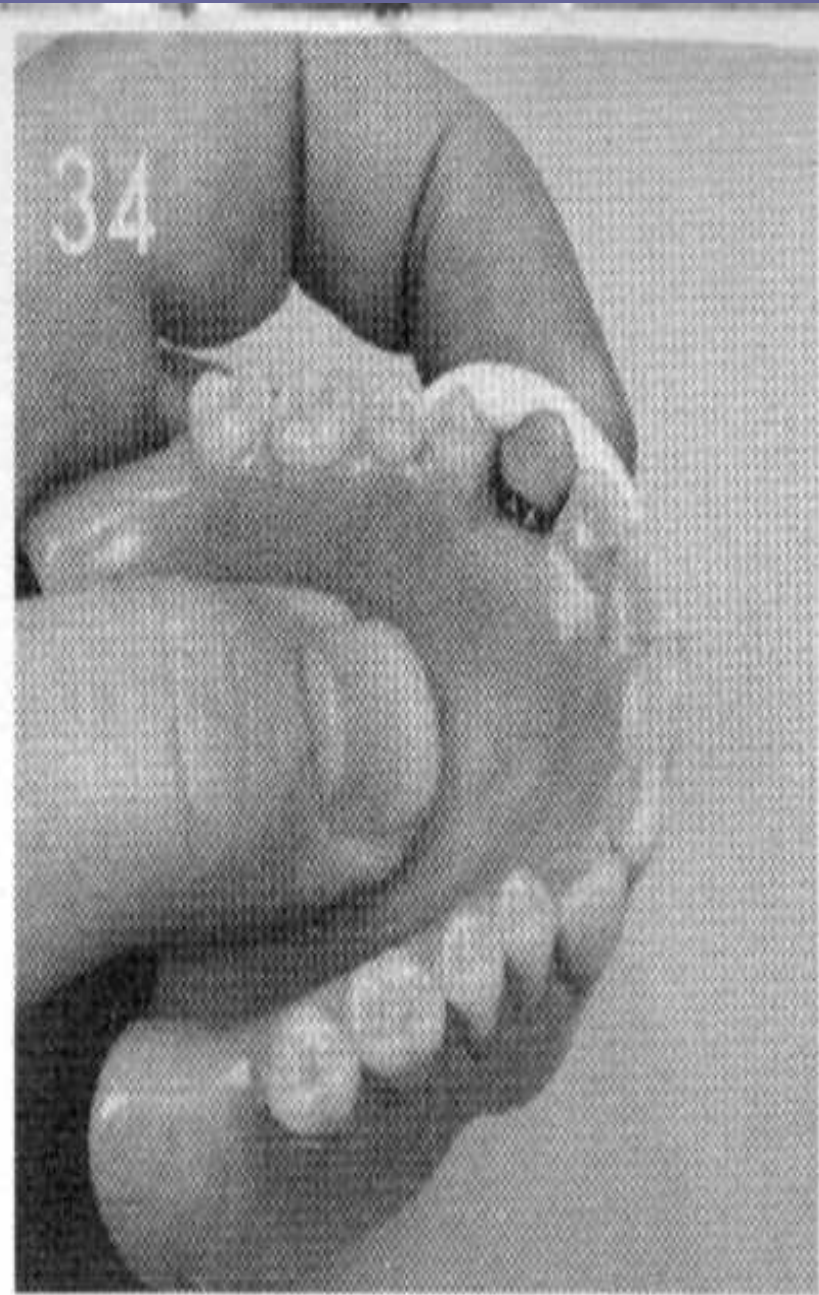




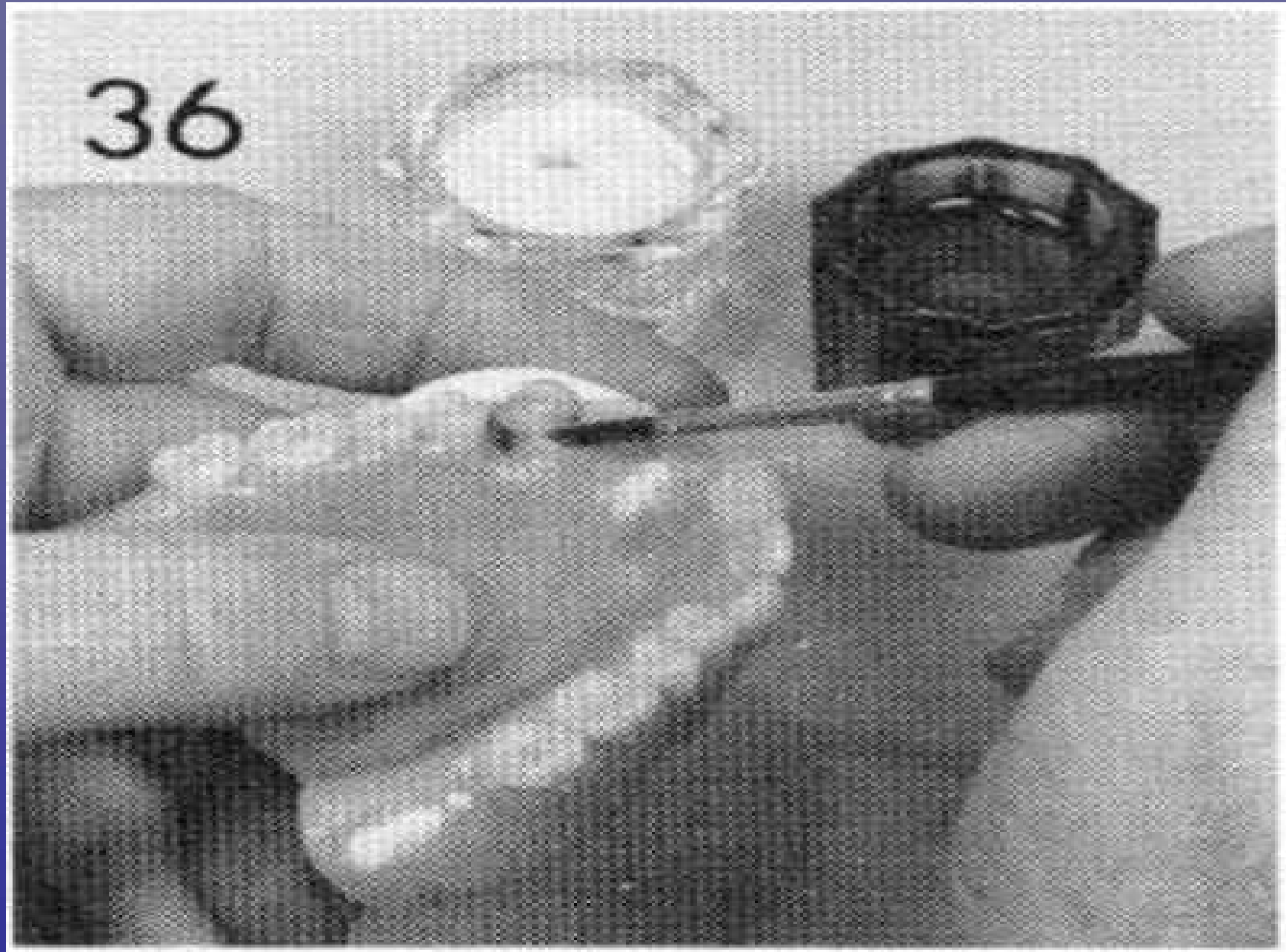
Reduction in the lingual area and using flame to soften the acrylic



Fixation of new tooth with sticky wax or plaster matrix

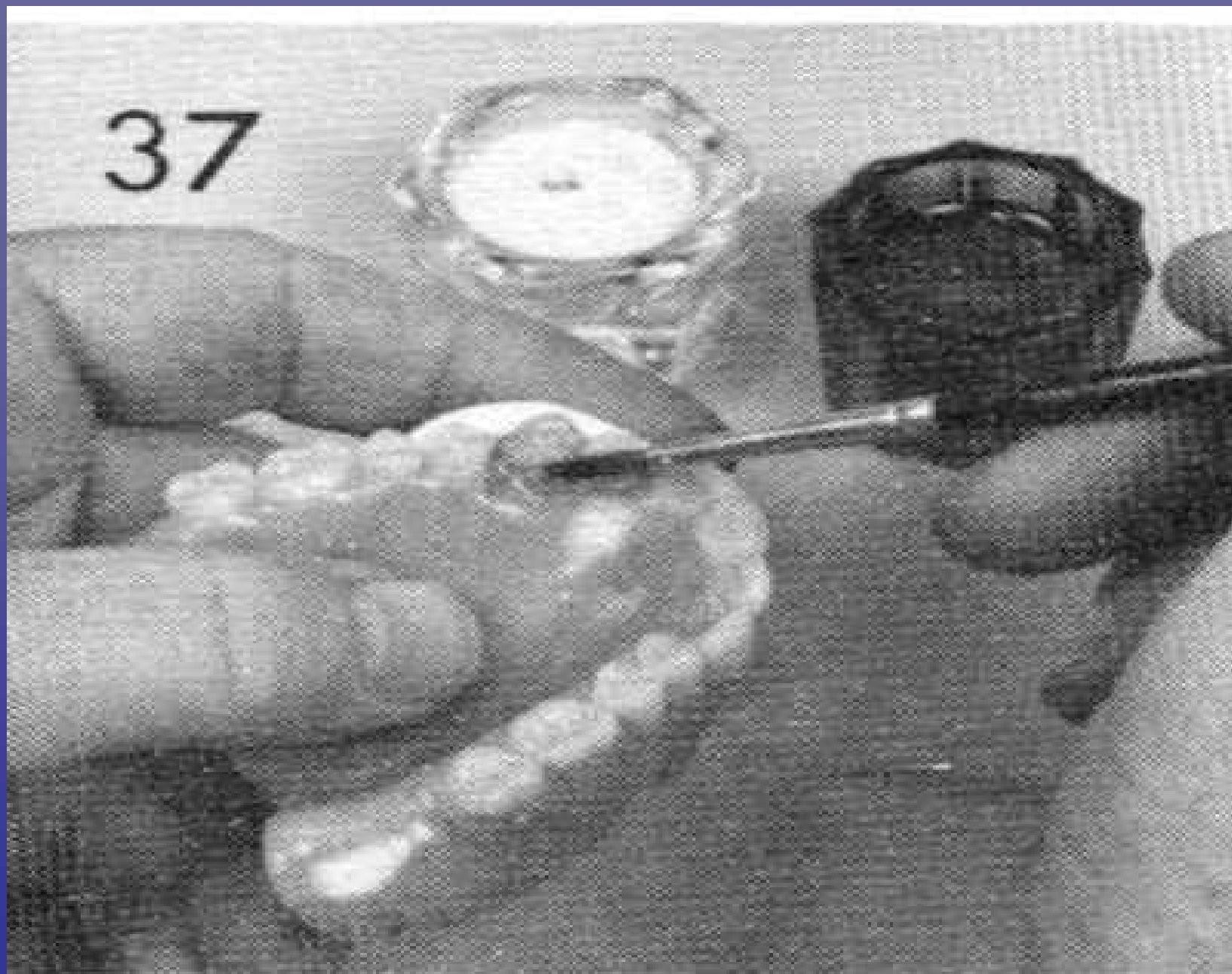


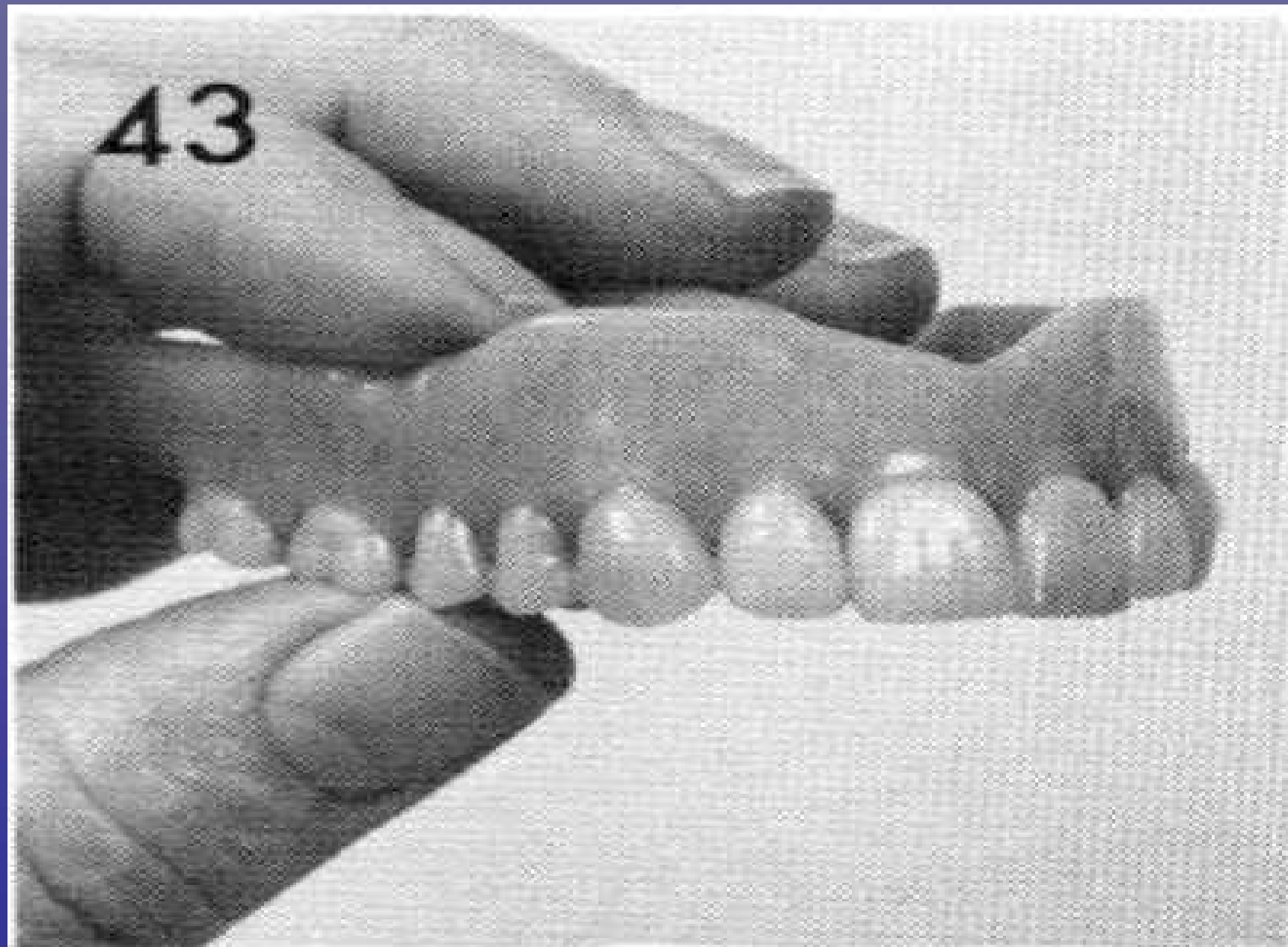
Applying a separating medium to the plaster



Pouring a thin mix of self curing acrylic resin to the space occupied

37





Finished denture after addition a new tooth