

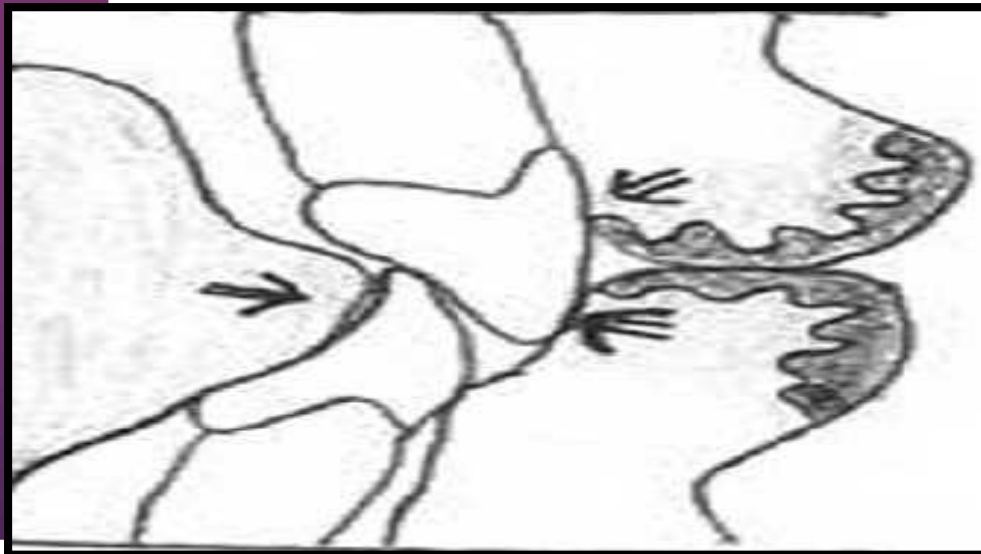
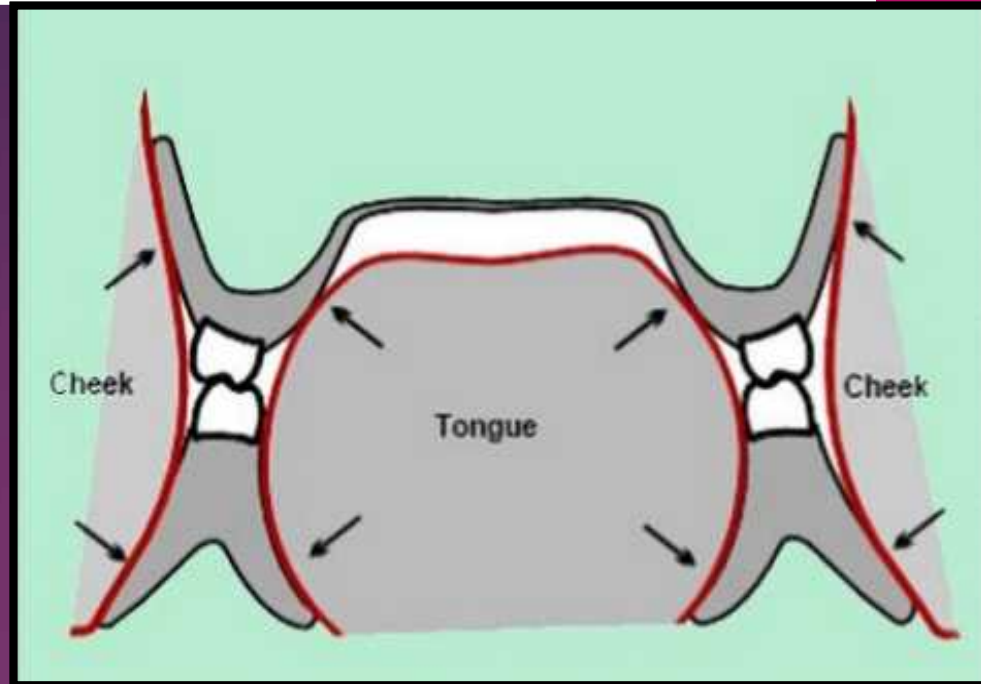
Dr. Tiba A. salman



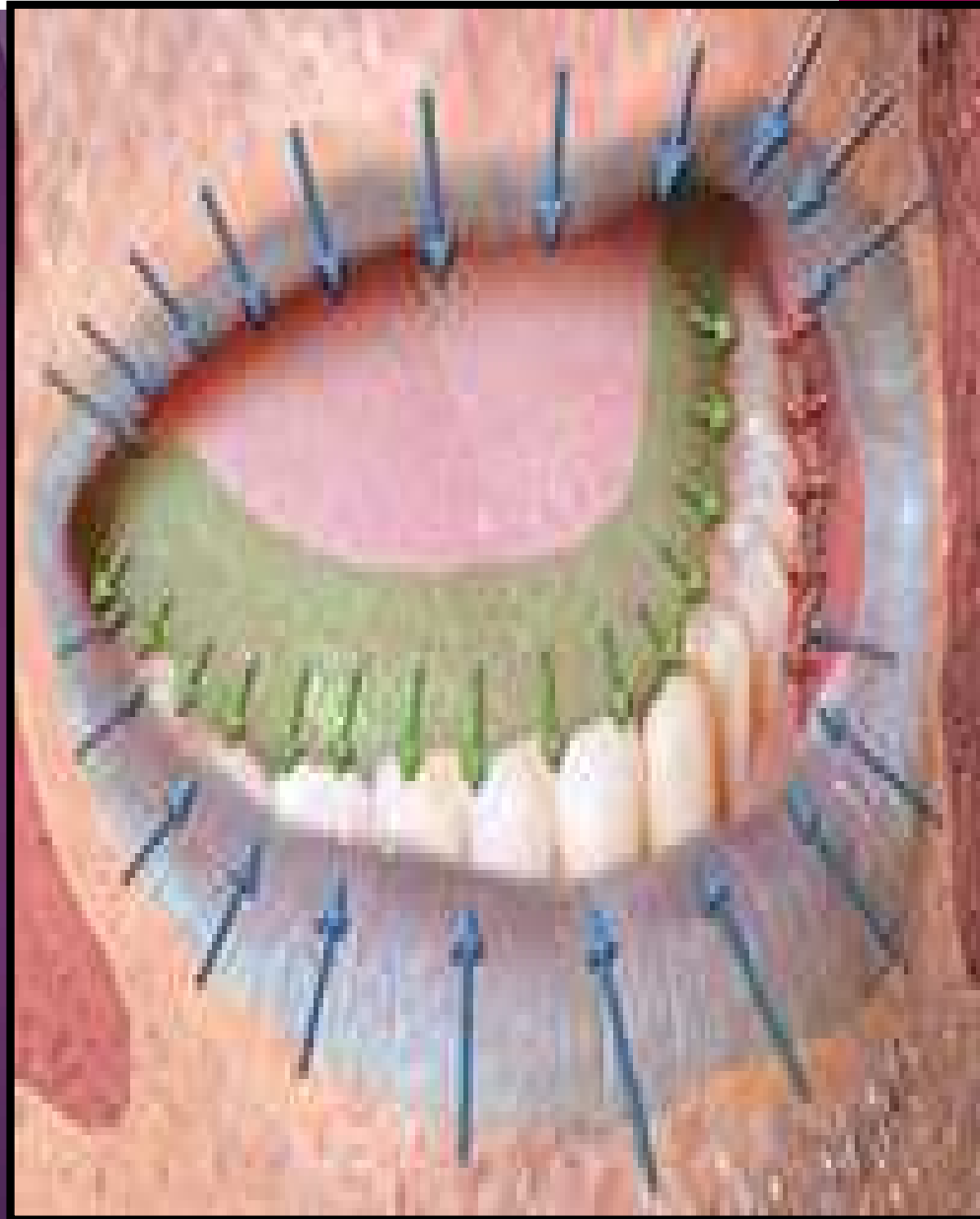
**Neutral zone technique for  
mandibular complete  
dentures**

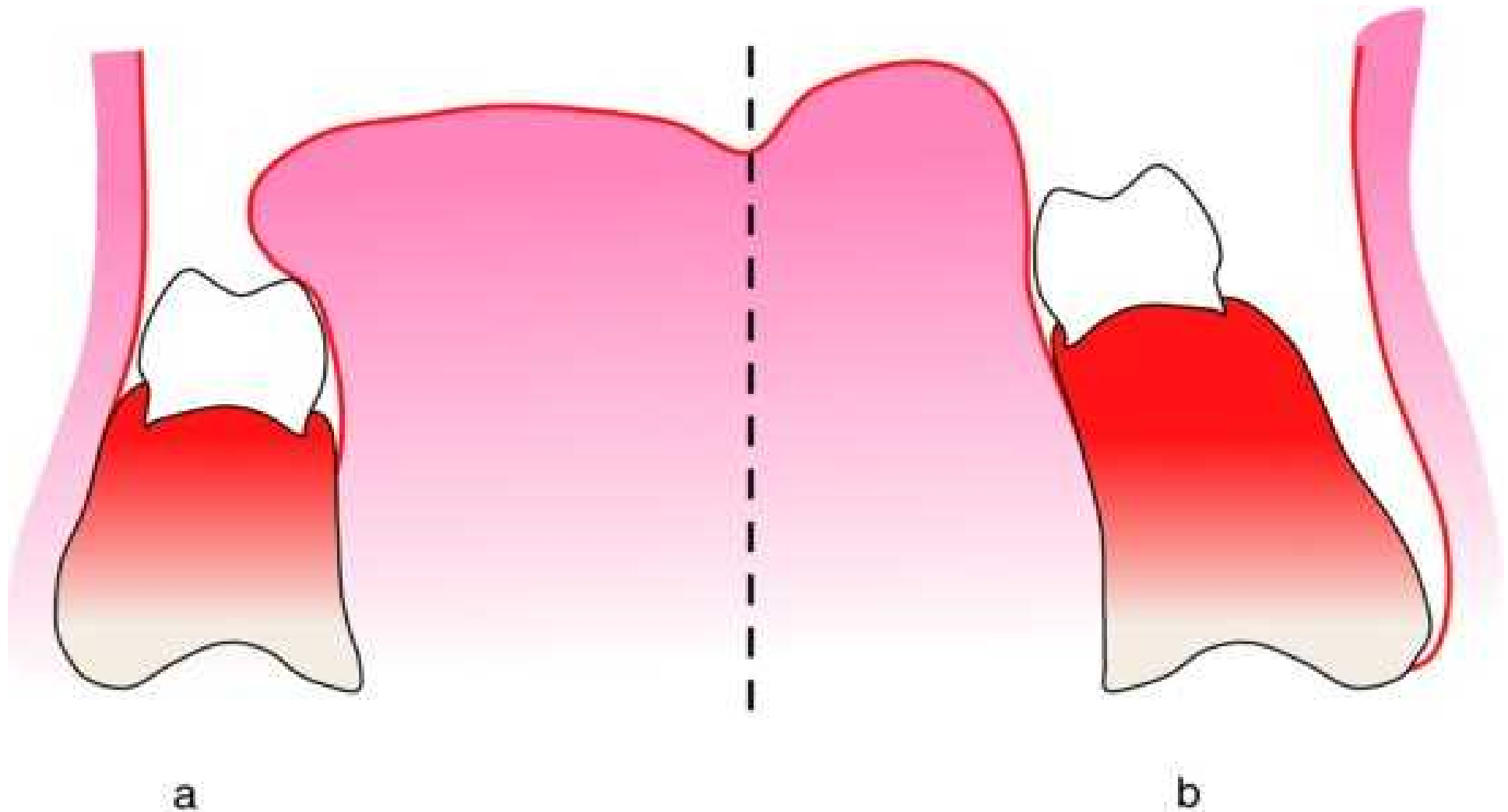
## The neutral zone

Is the area in the mouth where during function, the forces of the tongue pressing outwards are neutralised by the forces of the cheeks and lips pressing inwards.



The aim is 'to locate that area in the edentulous mouth where the teeth should be positioned so that the forces exerted by the muscles will tend to stabilize the denture rather than unseat it'.





The relationship of the lower posterior teeth to the cheeks and tongue: (a) correct (b) incorrect.

# Advantages

- Improved stability and retention
  - Posterior teeth will be correctly positioned allowing sufficient tongue space
  - Reduced food trapping adjacent to the molar teeth
  - Good aesthetics due to facial support.



# INDICATIONS



**Severely atrophic mandibular ridge**

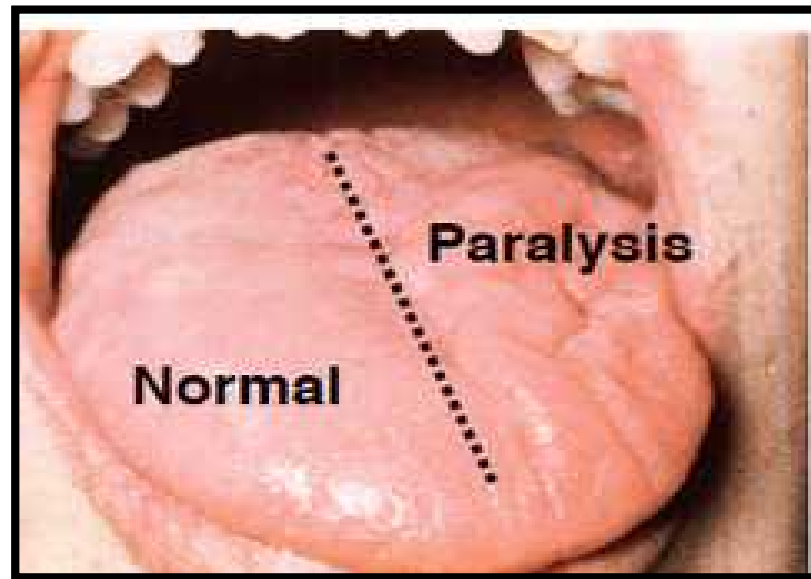


**High mentalis muscle attachment**

# INDICATIONS



**Mandibular resections**



**Motor nerve damage to the tongue**

# Materials used for neutral zone impression

Many materials have been suggested for shaping the neutral zone:



Modeling plastic impression compound.



Green stick compound.



# Materials used for neutral zone impression



soft modeling wax.



Silicone rubber base impression material.



Tissue conditioners and resilient lining materials.

# Neutral zone impression technique



Resorbed mandibular ridge



The primary impression



Secondary impression

## Neutral zone impression technique

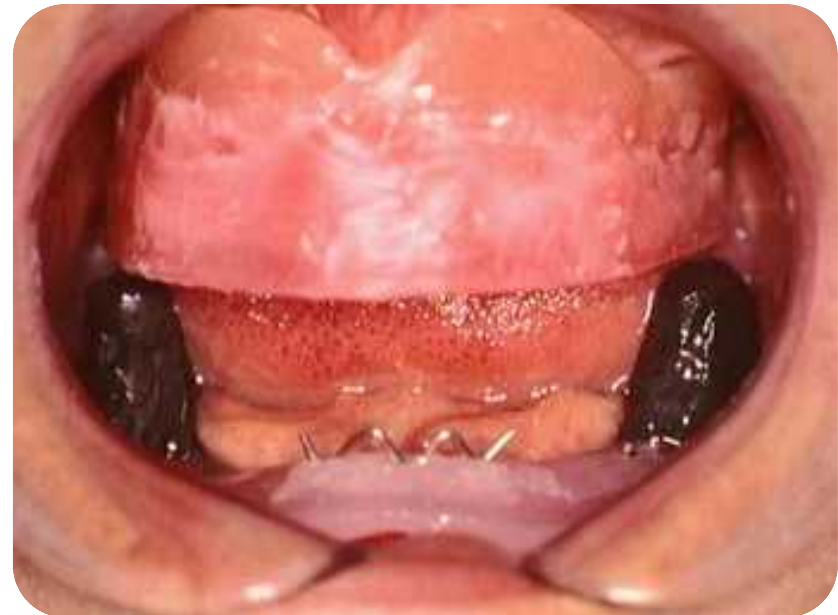


A lower acrylic record base with metal spurs  
acrylic shim to aid retention of the impression  
material.

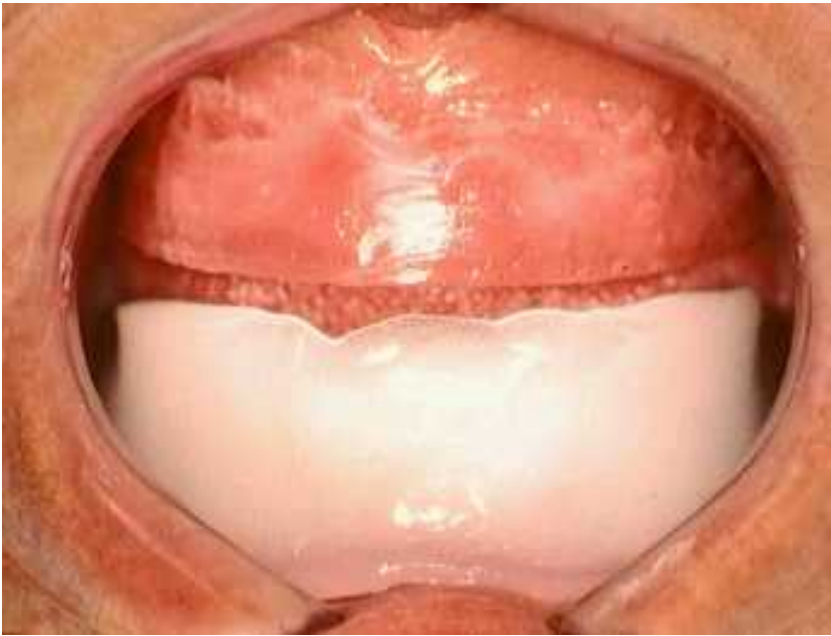
## Neutral zone impression technique



Occlusal pillars have been built up in green stick to the correct occlusal height



Establishing the correct occlusal height



viscogel rim is moulded within the mouth.



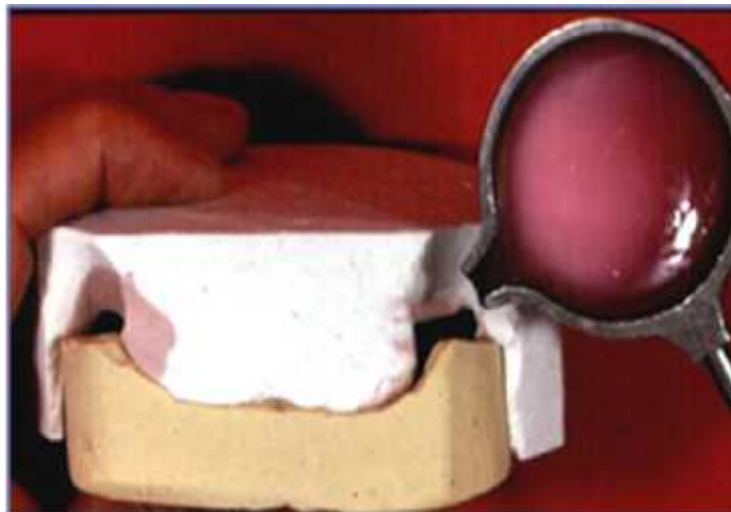
Functional recording of neutral zone



A completed neutral zone impression



A plaster index is poured around the neutral zone impression.



A plaster index used to locate the teeth to the neutral zone.



A plaster index used to locate the teeth to the neutral zone.



Try-in stage



Finished and polished denture



*Thank you*