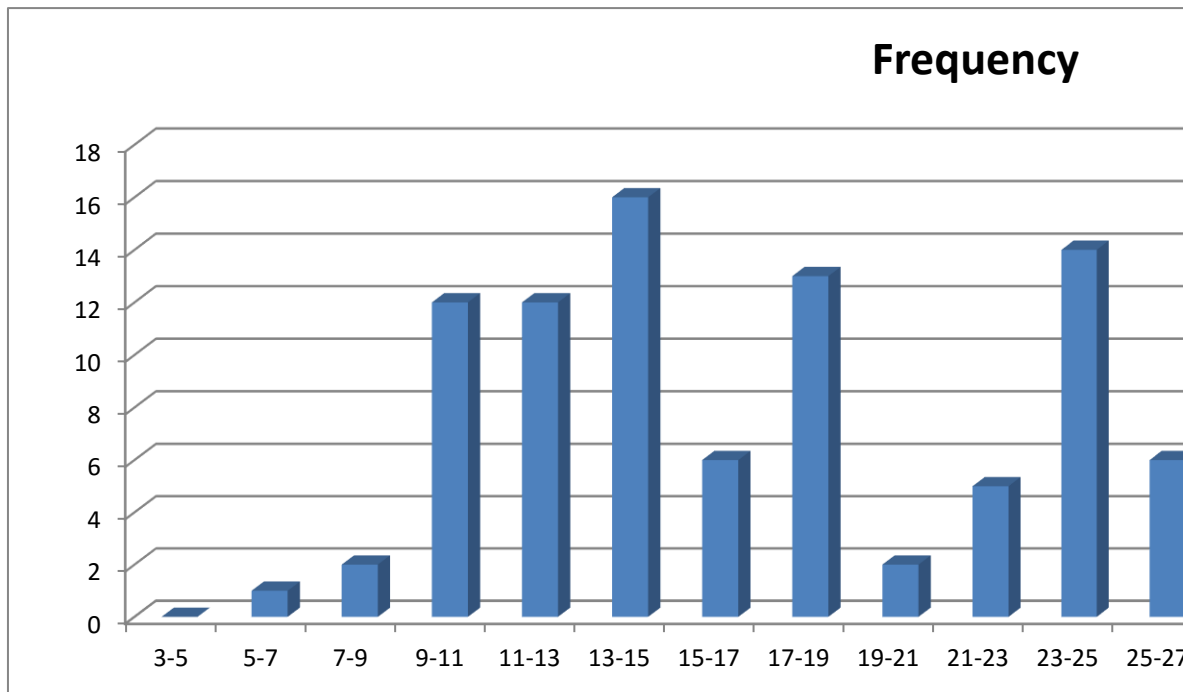


years	1	2	3	4	5	6	7	8
2003	9.7	13.5	18.6	23.0	30.0	34.3	35.8	35.6
2004	9.9	13.2	18.5	23.8	29.5	34.0	35.5	34.8
2005	9.8	12.1	17.9	24.4	29.2	33.0	35.6	34.7
2006	10.0	14.2	18.4	23.3	30.4	35.1	35.5	34.9
2007	8.1	13.2	17.2	21.8	31.5	34.5	36.2	35.7
2008	6.7	12.2	21.1	25.4	29.0	33.7	35.6	36.4
2009	9.2	14.8	17.8	22.6	29.7	34.5	34.7	34.9
2010	13.7	14.9	19.5	24.1	30.5	35.1	37.4	37.8
2011	10.2	12.7	17.1	23.7	29.5	34.4	37.0	35.8
2012	9.5	11.9	15.4	25.2	30.6	34.7	37.7	35.5
2013	11.3	15.0	18.6	24.0	27.6	33.0	34.9	34.0
2014	11.1	12.6	18.4	24.5	30.1	33.7	35.8	36.7
2015	10.8	13.6	17.9	23.2	30.6	34.0	37.4	37.2



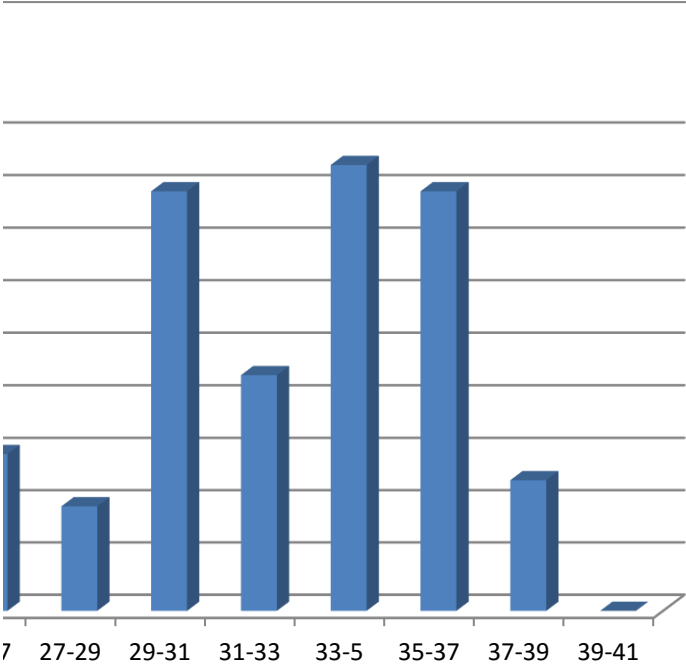






9	10	11	12
30.2	25.0	16.0	11.0
30.4	25.0	15.0	12.0
30.3	24.2	15.0	13.4
30.4	26.3	14.6	8.8
32.1	26.2	16.7	10.6
32.6	25.0	16.6	11.3
30.1	26.0	16.3	14.1
33.0	27.1	18.1	13.0
31.5	23.6	13.7	9.8
31.5	26.3	18.6	12.8
30.1	22.7	17.7	12.5
31.5	24.9	16.2	13.9
34.1	27.5	19.1	10.7

data	sort data	Bins or classes
9.7	6.7	5
9.9	8.1	7
9.8	8.8	9
10.0	9.2	11
8.1	9.5	13
6.7	9.7	15
9.2	9.8	17
13.7	9.8	19
10.2	9.9	21
9.5	10.0	23
11.3	10.2	25
11.1	10.6	27
10.8	10.7	29
13.5	10.8	31
13.2	11.0	33
12.1	11.1	35
14.2	11.3	37
13.2	11.3	39
12.2	11.9	41



.8	12.0
.9	12.1
.7	12.2
.9	12.5
.0	12.6
.6	12.7
.6	12.8
.6	13.0
.5	13.2
.9	13.2
.4	13.4
.2	13.5
.1	13.6
.8	13.7
.5	13.7
.1	13.9
.4	14.1
.6	14.2
18.4	14.6
17.9	14.8
23.0	14.9
23.8	15.0
24.4	15.0
23.3	15.0
21.8	15.4
25.4	16.0

22.6	16.2
24.1	16.3
23.7	16.6
25.2	16.7
24.0	17.1
24.5	17.2
23.2	17.7
30.0	17.8
29.5	17.9
29.2	17.9
30.4	18.1
31.5	18.4
29.0	18.4
29.7	18.5
30.5	18.6
29.5	18.6
30.6	18.6
27.6	19.1
30.1	19.5
30.6	21.1
34.3	21.8
34.0	22.6
33.0	22.7
35.1	23.0
34.5	23.2
33.7	23.3
34.5	23.6
35.1	23.7
34.4	23.8
34.7	24.0
33.0	24.1
33.7	24.2
34.0	24.4
35.8	24.5
35.5	24.9
35.6	25.0
35.5	25.0
36.2	25.0
35.6	25.2
34.7	25.4
37.4	26.0
37.0	26.2
37.7	26.3
34.9	26.3
35.8	27.1
37.4	27.5
35.6	27.6

34.8	29.0
34.7	29.2
34.9	29.5
35.7	29.5
36.4	29.7
34.9	30.0
37.8	30.1
35.8	30.1
35.5	30.1
34.0	30.2
36.7	30.3
37.2	30.4
30.2	30.4
30.4	30.4
30.3	30.5
30.4	30.6
32.1	30.6
32.6	31.5
30.1	31.5
33.0	31.5
31.5	31.5
31.5	32.1
30.1	32.6
31.5	33.0
34.1	33.0
25.0	33.0
25.0	33.7
24.2	33.7
26.3	34.0
26.2	34.0
25.0	34.0
26.0	34.1
27.1	34.3
23.6	34.4
26.3	34.5
22.7	34.5
24.9	34.7
27.5	34.7
16.0	34.7
15.0	34.8
15.0	34.9
14.6	34.9
16.7	34.9
16.6	35.1
16.3	35.1
18.1	35.5
13.7	35.5

18.6	35.5
17.7	35.6
16.2	35.6
19.1	35.6
11.0	35.7
12.0	35.8
13.4	35.8
8.8	35.8
10.6	36.2
11.3	36.4
14.1	36.7
13.0	37.0
9.8	37.2
12.8	37.4
12.5	37.4
13.9	37.7
10.7	37.8



interval	Frequency
3-5	0
5-7	1
7-9	2
9-11	12
11-13	12
13-15	16
15-17	6
17-19	13
19-21	2
21-23	5
23-25	14
25-27	6
27-29	4
29-31	16
31-33	9
33-35	17
35-37	16
37-39	5
39-41	0