

String value

```
<?xml version="1.0" encoding="utf-8"?>
```

```
<resources>
```

```
  <string name="app_name">Login</string>
```

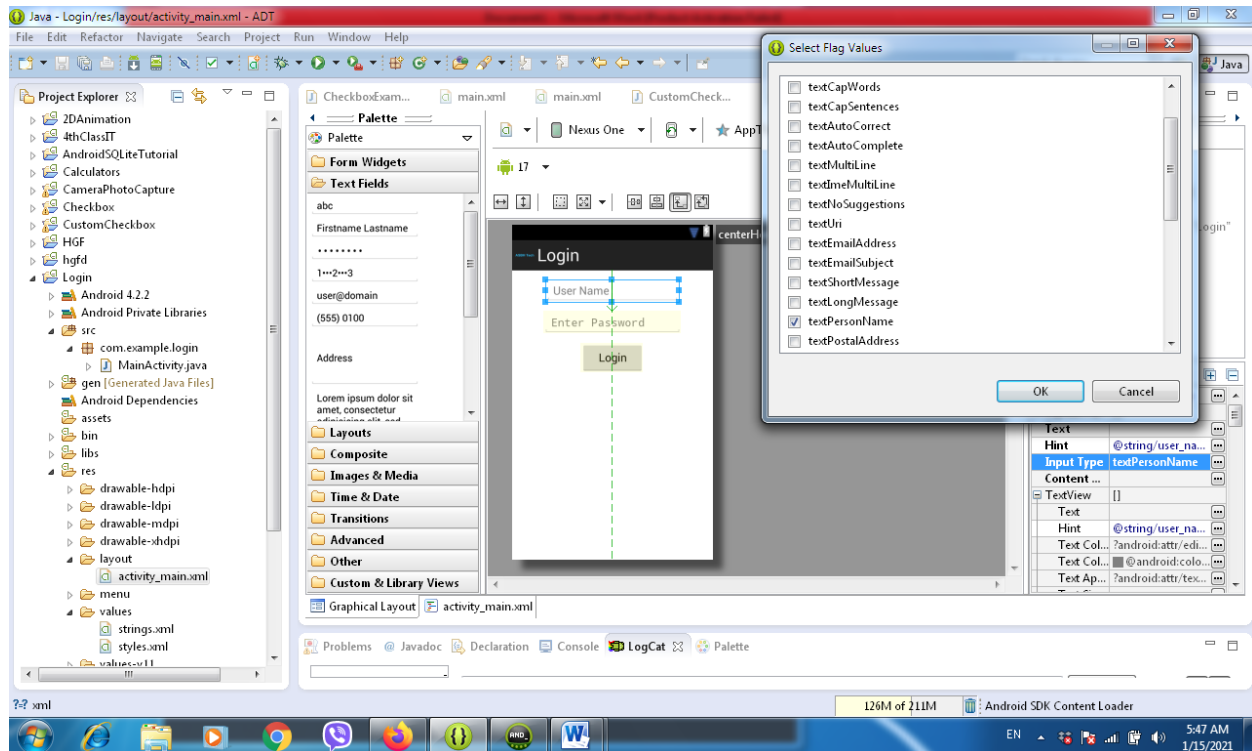
```
    <string name="menu_settings">Settings</string>
```

```
  <string name="user_name">User Name</string>
```

```
  <string name="enter_password">Enter Password</string>
```

```
  <string name="login">Login</string>
```

```
</resources>
```



- 1- From text field drag and drop the object
- 2- from the properties open input type then chose textPersonalName and checked
- 3- from the properties from hint write @string/user_name (it is same word in string value) and for the password write @string/enter_password (it is same word in string value)
- 4- save all your job

Code of xml

```
<RelativeLayout xmlns:android="http://schemas.android.com/apk/res/android"
    xmlns:tools="http://schemas.android.com/tools"
    android:layout_width="match_parent"
    android:layout_height="match_parent"
    tools:context=".MainActivity" >

    <EditText
        android:id="@+id/etxtname"
        android:layout_width="wrap_content"
        android:layout_height="wrap_content"
        android:layout_centerHorizontal="true"
        android:layout_marginBottom="15dp"
        android:layout_marginTop="15dp"
        android:ems="10"
        android:hint="@string/user_name"
```

```
    android:inputType="textPersonName" />
```

```
<EditText
```

```
    android:id="@+id/etxtpass"  
    android:layout_width="wrap_content"  
    android:layout_height="wrap_content"  
    android:layout_centerHorizontal="true"  
    android:layout_alignTop="@+id/etxtname"  
    android:layout_marginTop="50dp"  
    android:ems="10"  
    android:hint="@string/enter_password"  
    android:inputType="textPassword" />
```

```
<Button
```

```
    android:id="@+id/btnLogin"  
    android:layout_width="wrap_content"  
    android:layout_height="wrap_content"  
    android:layout_alignTop="@+id/etxtpass"  
    android:layout_marginTop="50dp"  
    android:layout_centerHorizontal="true"  
    android:minWidth="100dip"  
    android:text="@string/Login" />
```

```
<TextView
```

```
    android:id="@+id/txtmsg"  
    android:layout_width="wrap_content"  
    android:layout_height="wrap_content"  
    android:layout_alignTop="@+id/btnLogin"  
    android:layout_marginTop="80dp"  
    android:layout_centerHorizontal="true"  
    android:layout_centerVertical="true" />
```

```
</RelativeLayout>
```

Code of java

```
package com.example.login;
```

```
import android.os.Bundle;
```

```
import android.app.Activity;
```

```
import android.view.View;
```

```
import android.view.View.OnClickListener;
```

```
import android.widget.Button;
```

```
import android.widget.EditText;
```

```
import android.widget.TextView;

public class MainActivity extends Activity {

    @Override

    protected void onCreate(Bundle savedInstanceState) {

        super.onCreate(savedInstanceState);

        setContentView(R.layout.activity_main);

        final EditText etxtpass = (EditText) findViewById(R.id.etxtpass);

        final EditText etxtname = (EditText) findViewById(R.id.etxtname);

        final Button btnlogin = (Button) findViewById(R.id.btnlogin);

        final TextView txtmsg = (TextView) findViewById(R.id.txtmsg);

        final String name = "mohanadali";

        final String password = "ali";

        btnlogin.setOnClickListener(new OnClickListener()

        {

            @Override

            public void onClick(View v)

            {

                String sname = etxtname.getText().toString();

                String spass = etxtpass.getText().toString();

                if(sname.equals(name) && spass.equals(password))

                {

                    etxtpass.setEnabled(false);

                    etxtname.setEnabled(false);

                    btnlogin.setEnabled(false);

                    txtmsg.setText("Welcome at Mobile Application");

                }

            }

        })

    }

}
```

```
        else
        {
            txtmsg.setText("Error "+sname+" "+spass);
        }
    }
};
}
}
```