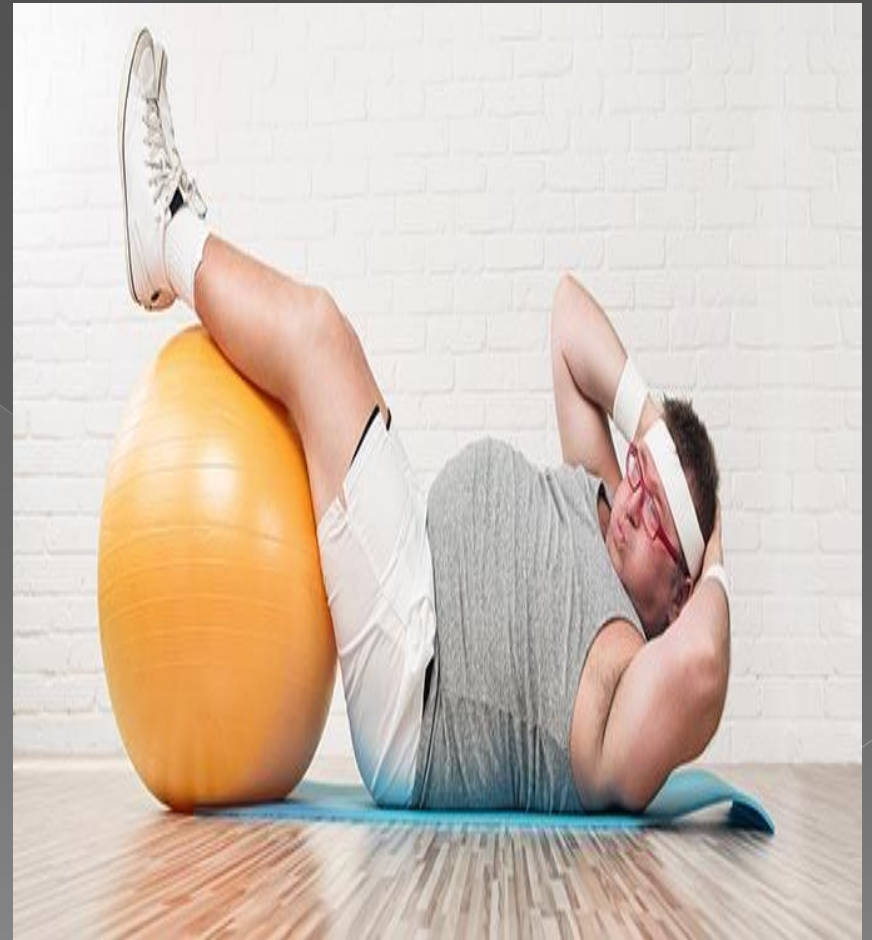


# The abdominal cavity



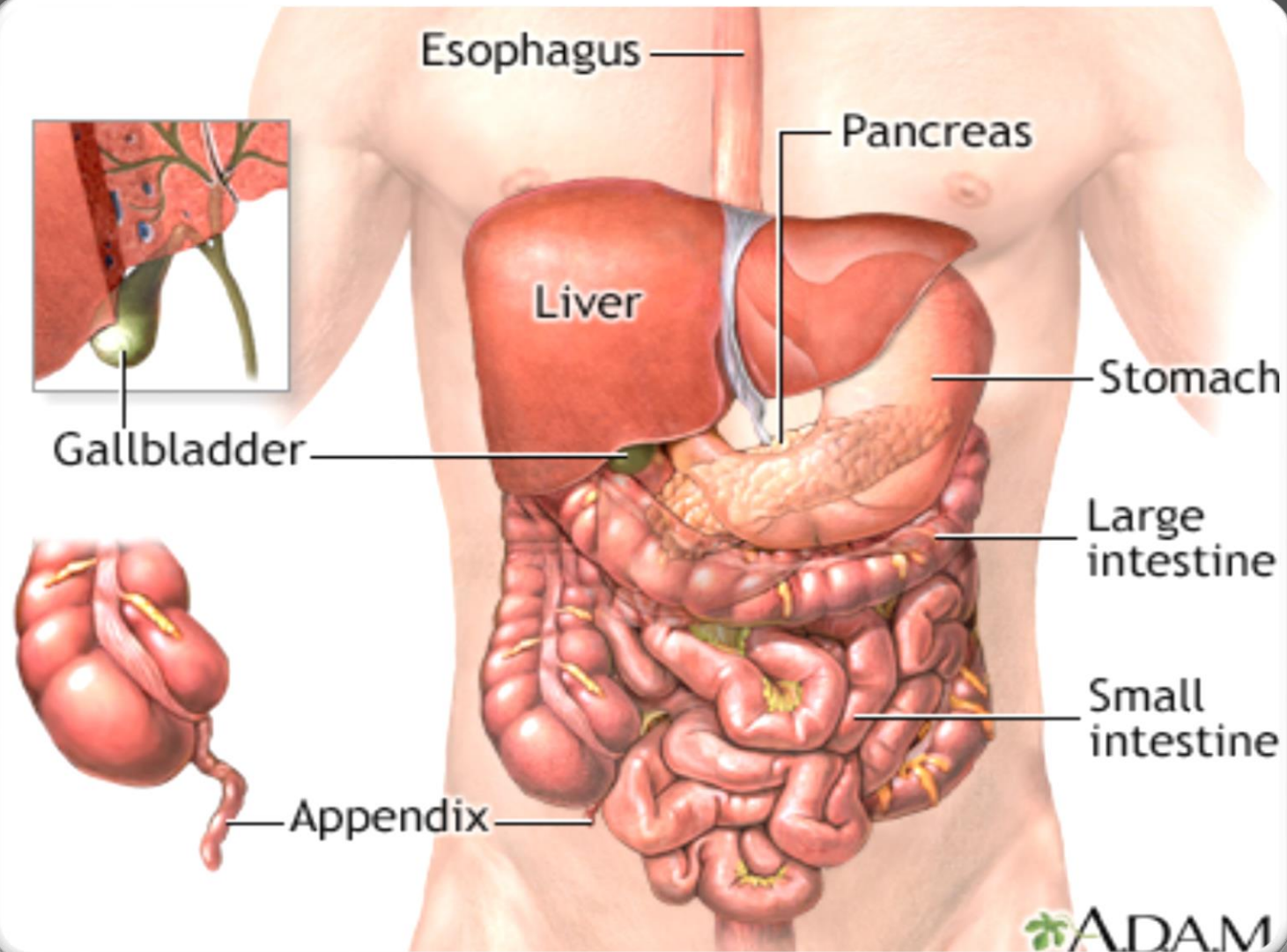
# This seminar is presented by:

- ريام ايااد طه
- ضراح مرتضى
- علا عامر
- رقيه عبد الرحمن
- زهراء حسين
- زهراء عبد الرزاق
- تبارك علي كنعان
- هدى جواد
- دعاء جاسم
- تبارك جلال

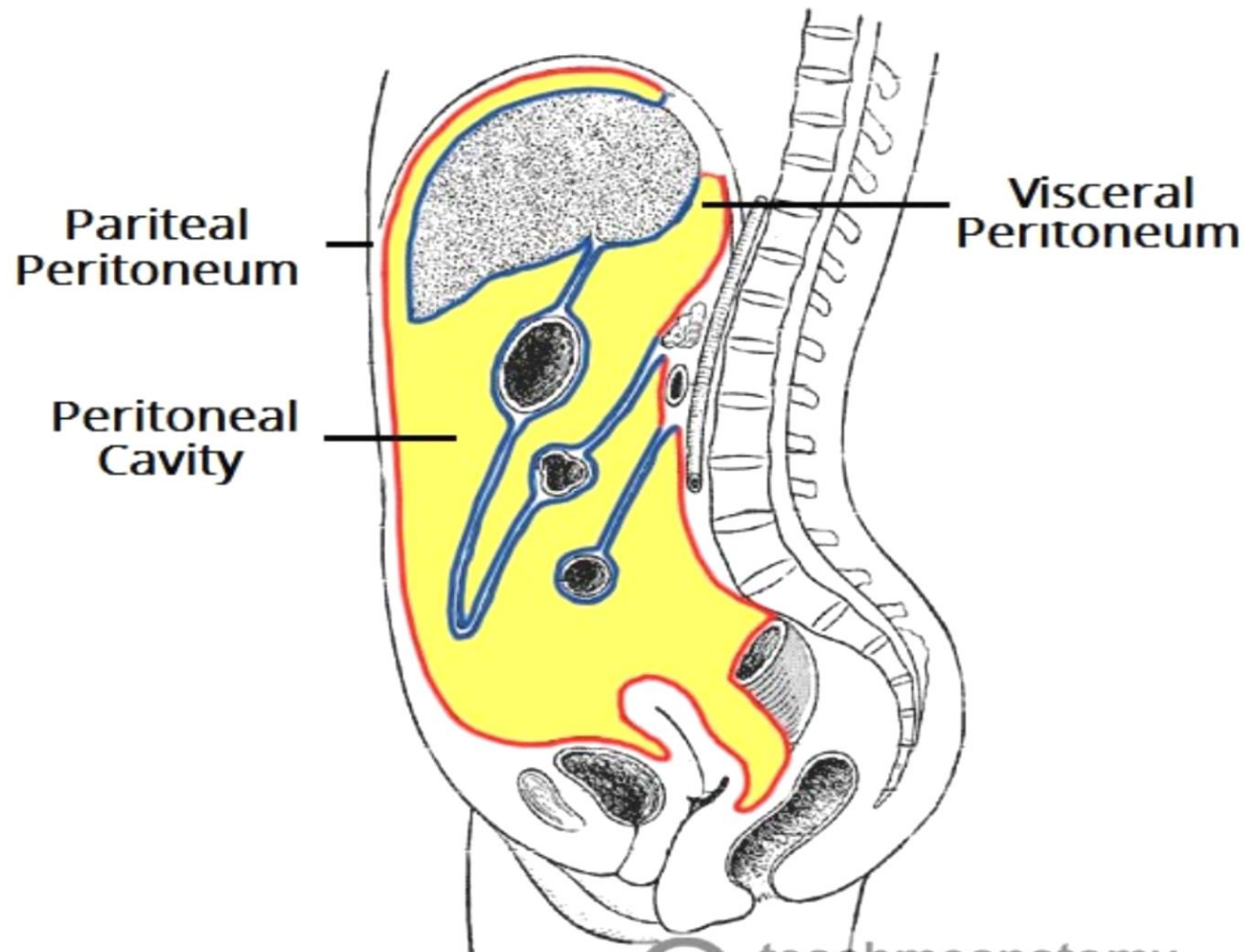
# The abdominal cavity contents :

- Organs
- Peritoneum
- Mesentery
- omentum

# The organs



# The Peritoneum



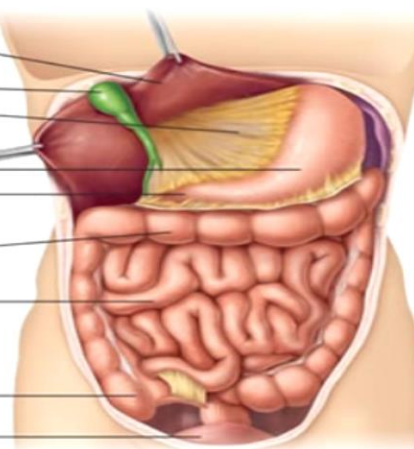
teachmeanatomy

The #1 Applied Human Anatomy Site on the Web

# The mesentery

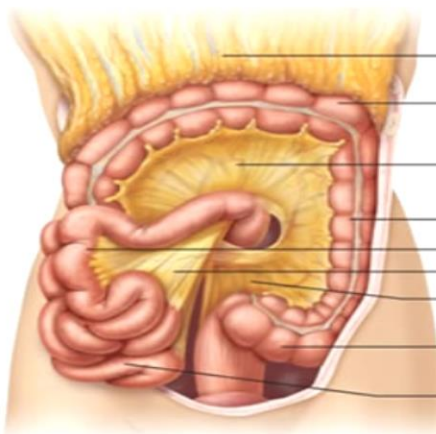


- Falciform ligament
- Liver
- Gallbladder
- Lesser omentum
- Spleen
- Stomach
- Duodenum
- Ligamentum teres
- Transverse colon
- Greater omentum
- Small intestine
- Cecum
- Urinary bladder



(a)

(b)



- Greater omentum
- Transverse colon
- Transverse mesocolon
- Descending colon
- Jejunum
- Mesentery
- Sigmoid mesocolon
- Sigmoid colon
- Ileum

(c)

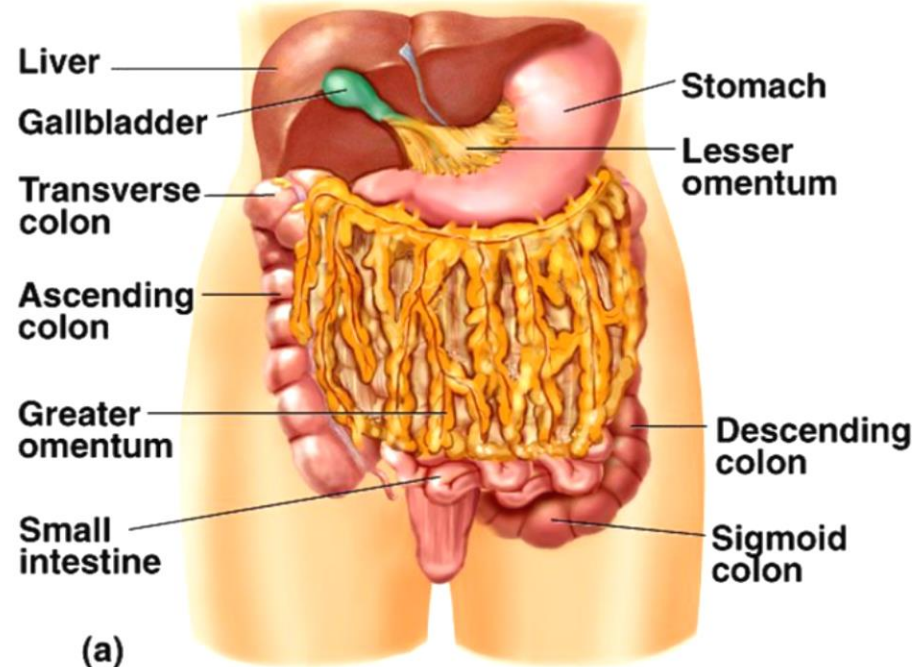


- Liver
- Lesser omentum
- Pancreas
- Stomach
- Duodenum
- Transverse mesocolon
- Transverse colon
- Mesentery
- Greater omentum
- Jejunum
- Ileum
- Visceral peritoneum
- Parietal peritoneum
- Urinary bladder
- Rectum

(d)

# The omentum

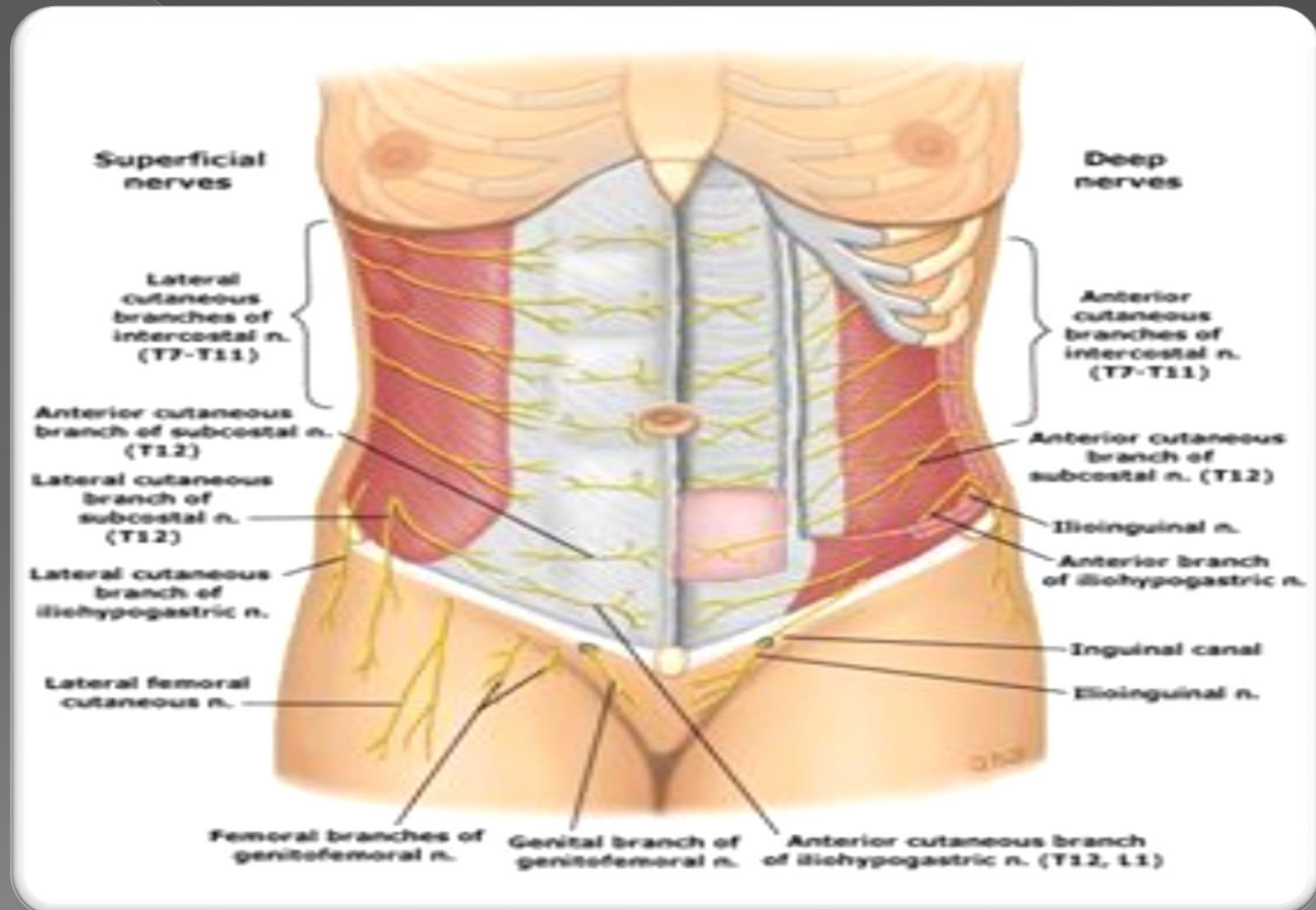
## Lesser & Greater Omentum



- Lesser attaches stomach to liver
- Greater covers small intestines like an apron

• Greater covers small intestines like an apron

# The sensory nerve supply

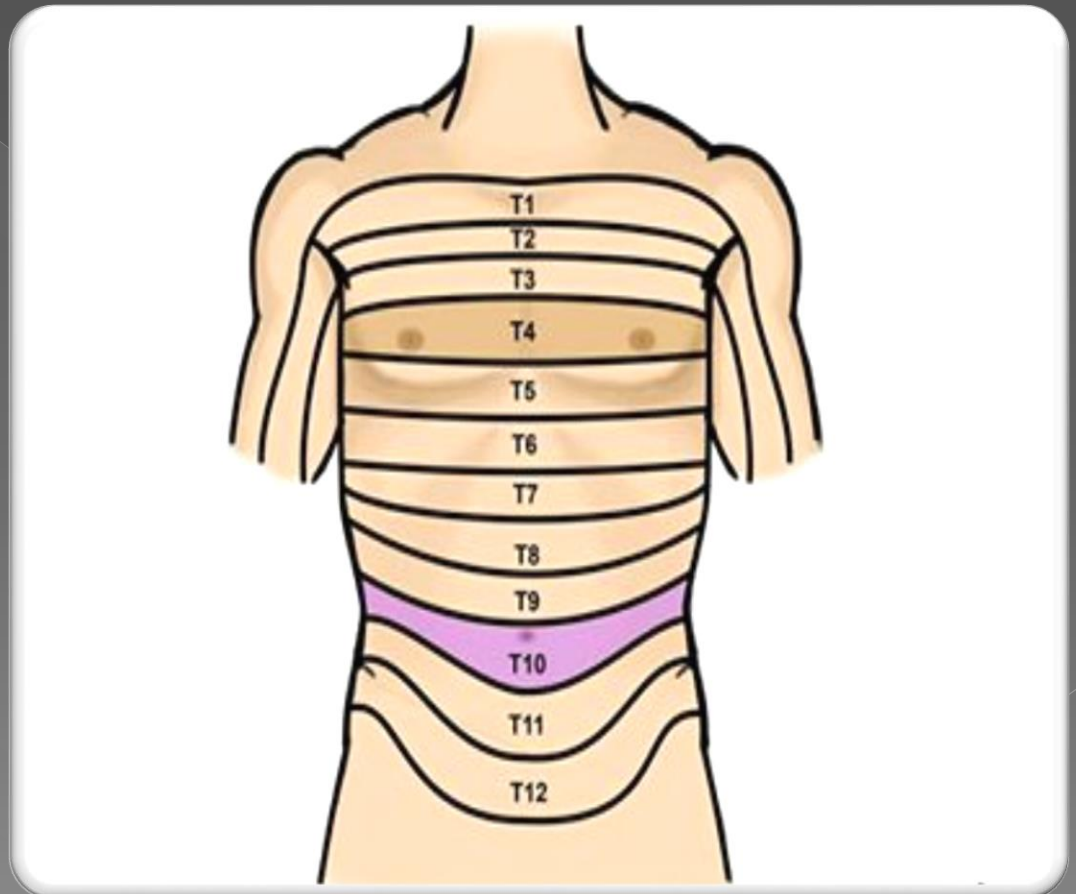


Frontal view of the human torso showing the sensory nerve supply. The diagram illustrates the distribution of nerves from the thoracic and lumbar regions, including intercostal, subcostal, iliohypogastric, ilioinguinal, and genitofemoral nerves.

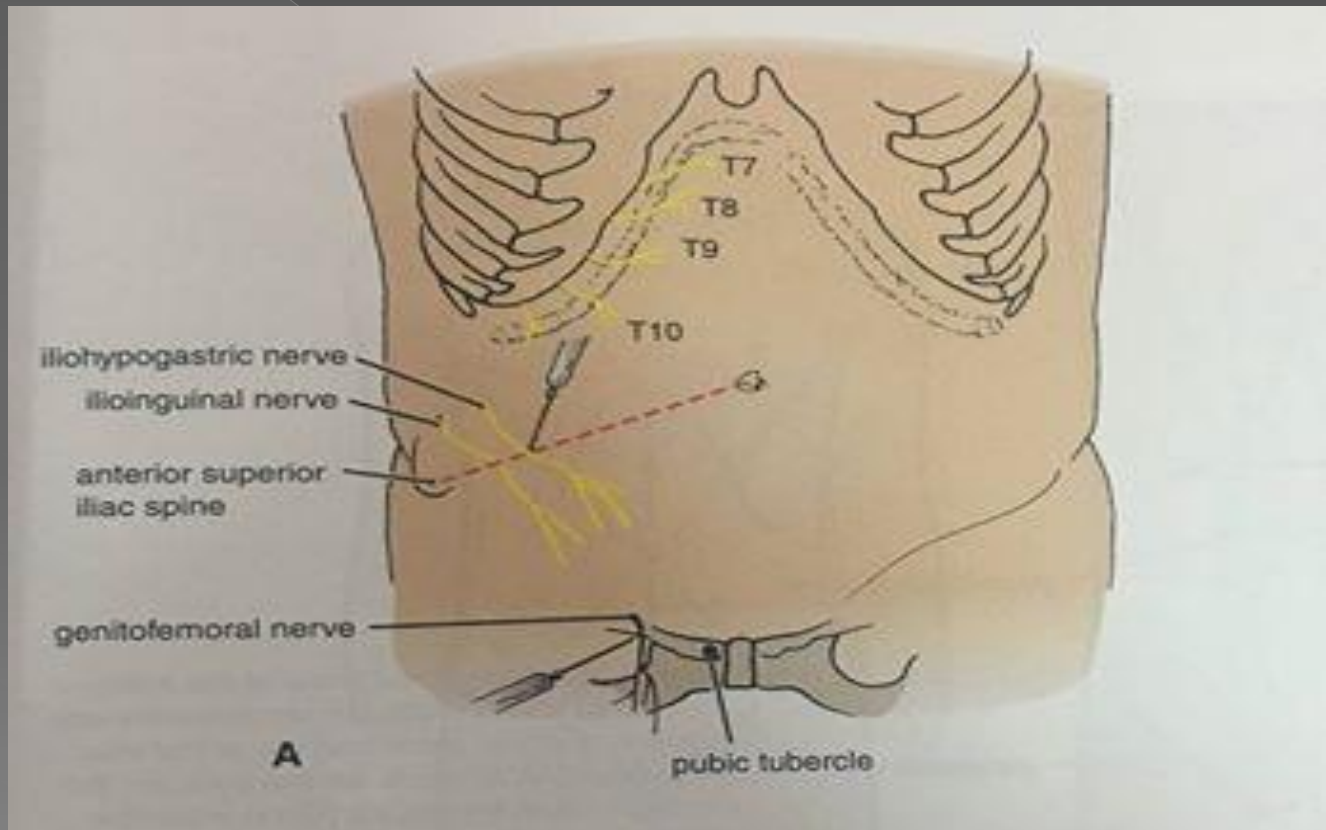


# Dermatoms

- T 7
- T 8
- T 9
- T 10
- T 11
- T 12



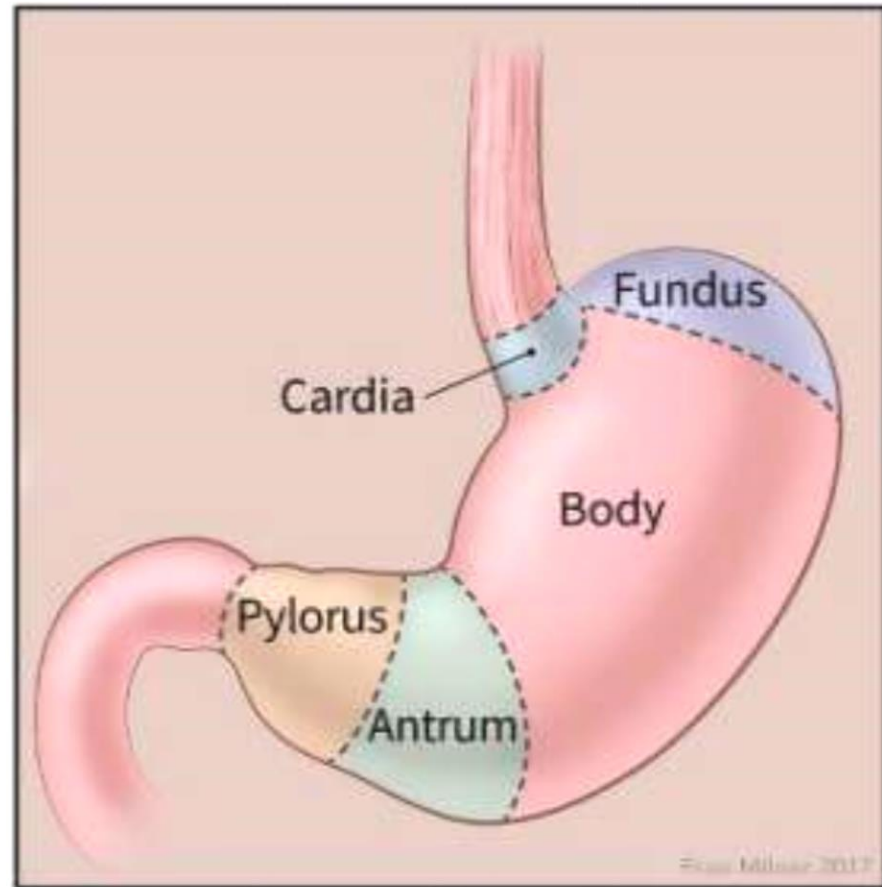
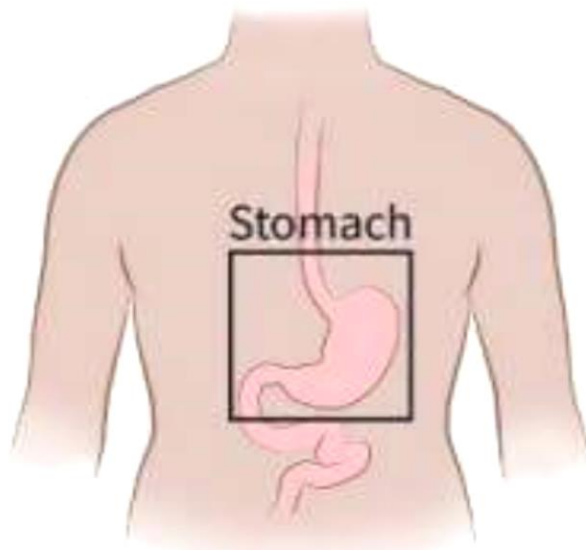
# Anterior Abdominal Wall Nerves Block



# The stomach

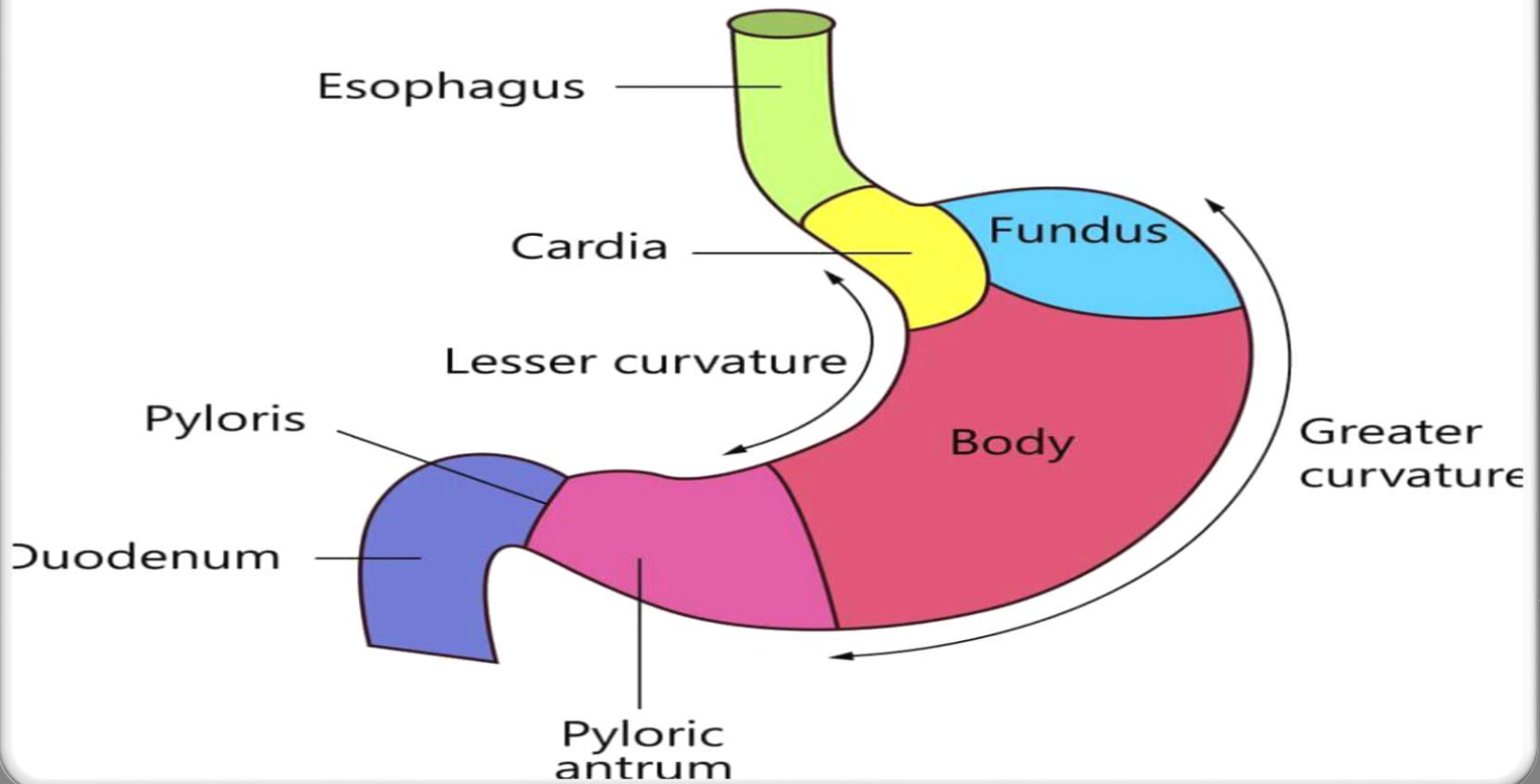


# The anatomical position

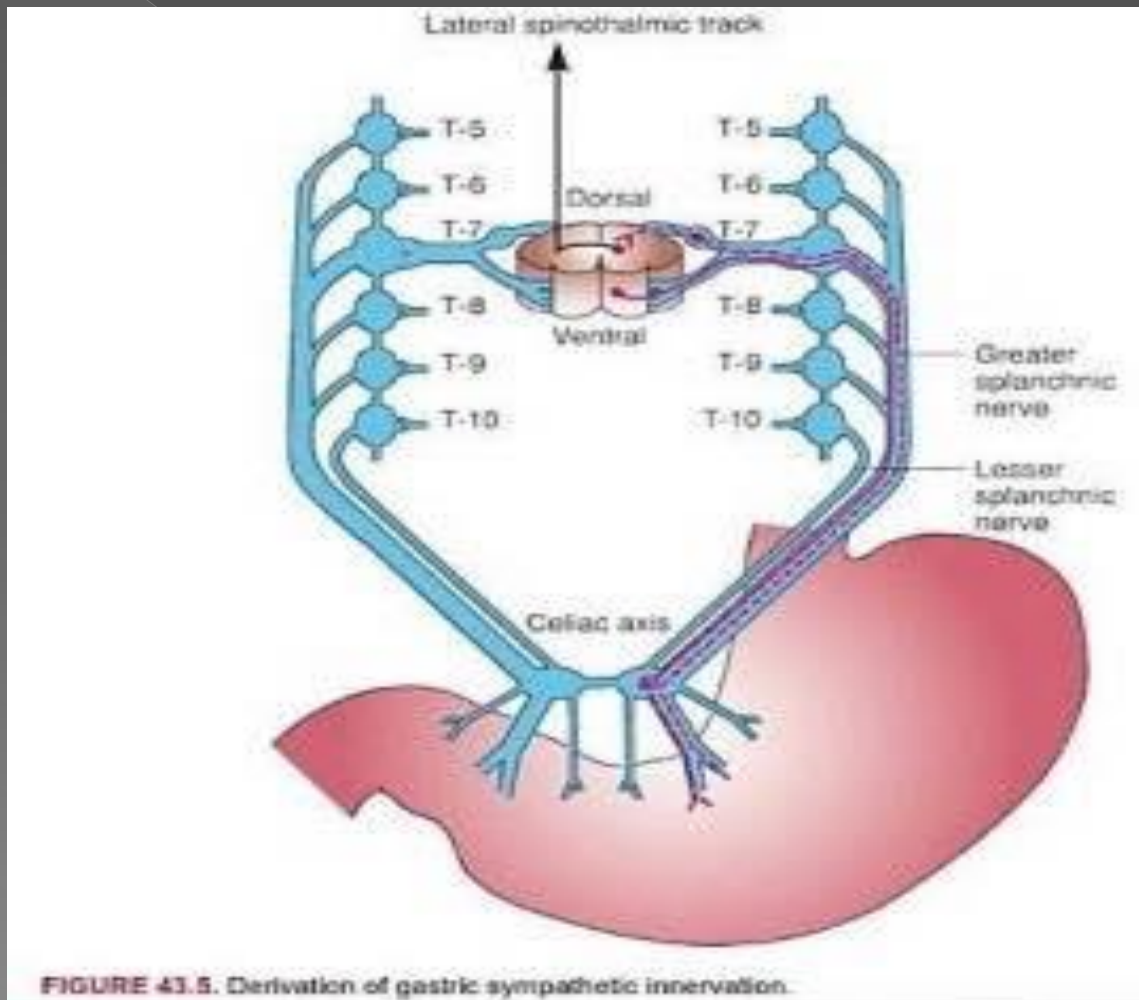


# The anatomical division:

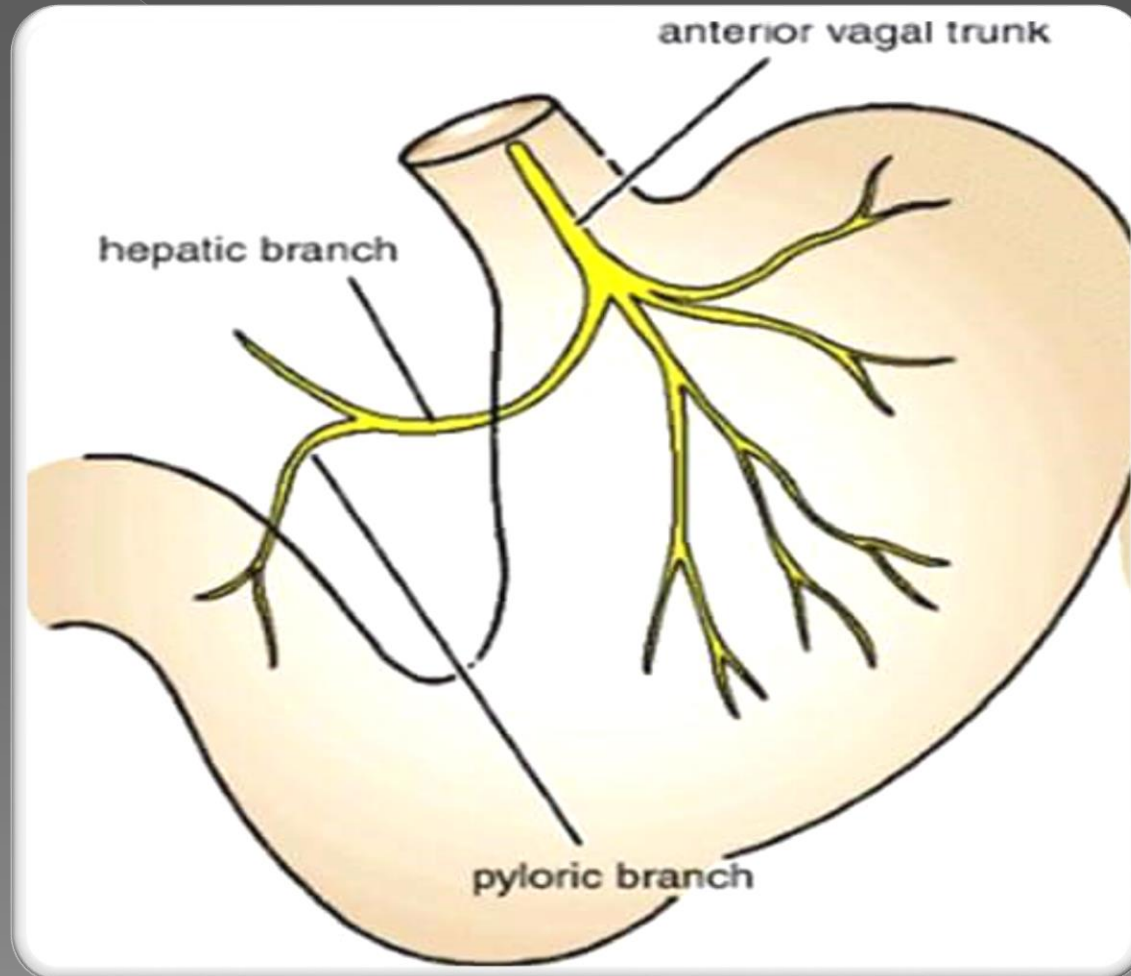
## Stomach



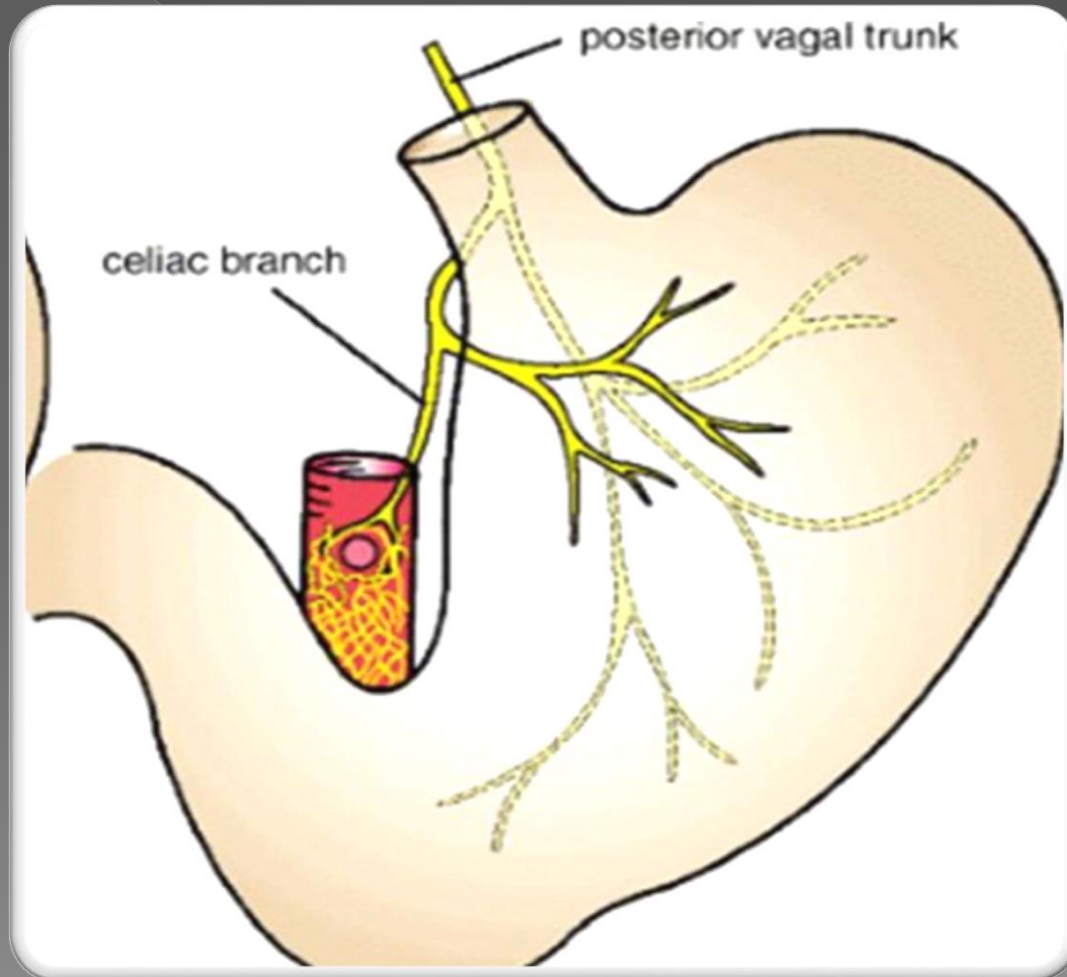
# The sympathetic nerve supply:



# The parasympathetic nerve supply anterior view:

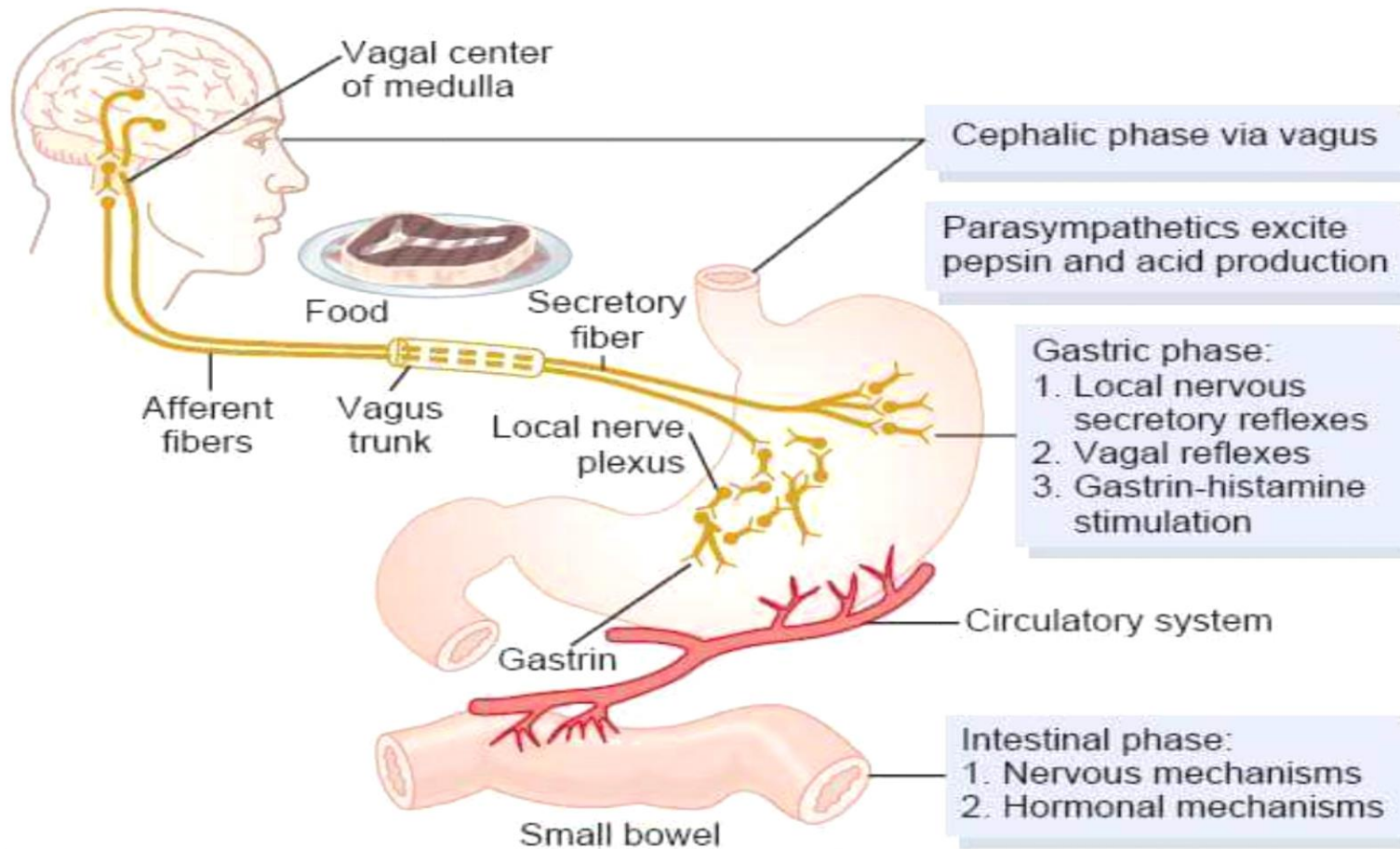


# The parasympathetic nerve supply posterior view:





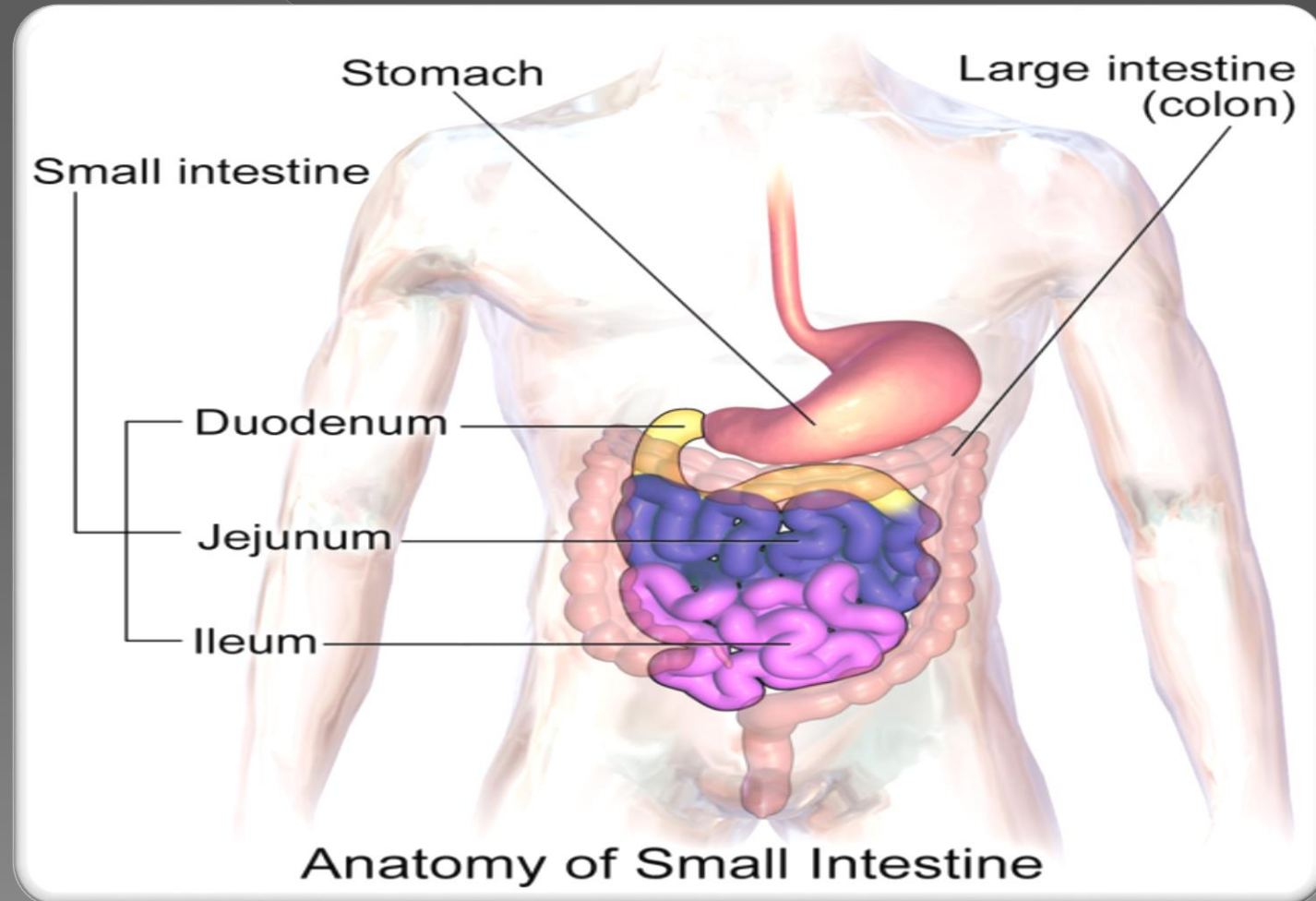
# Function of stomach:



# The small intestine:



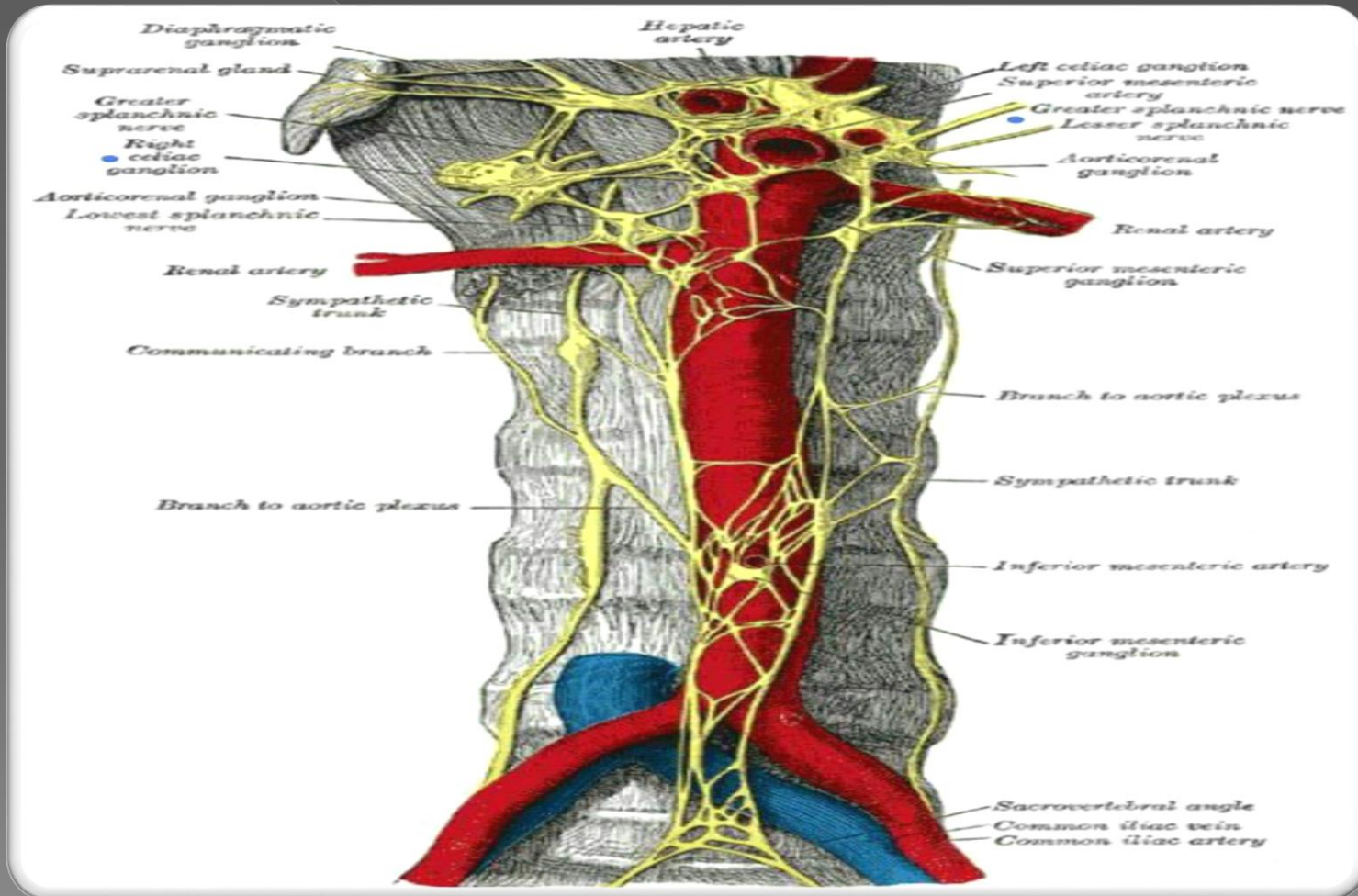
# The anatomical position:



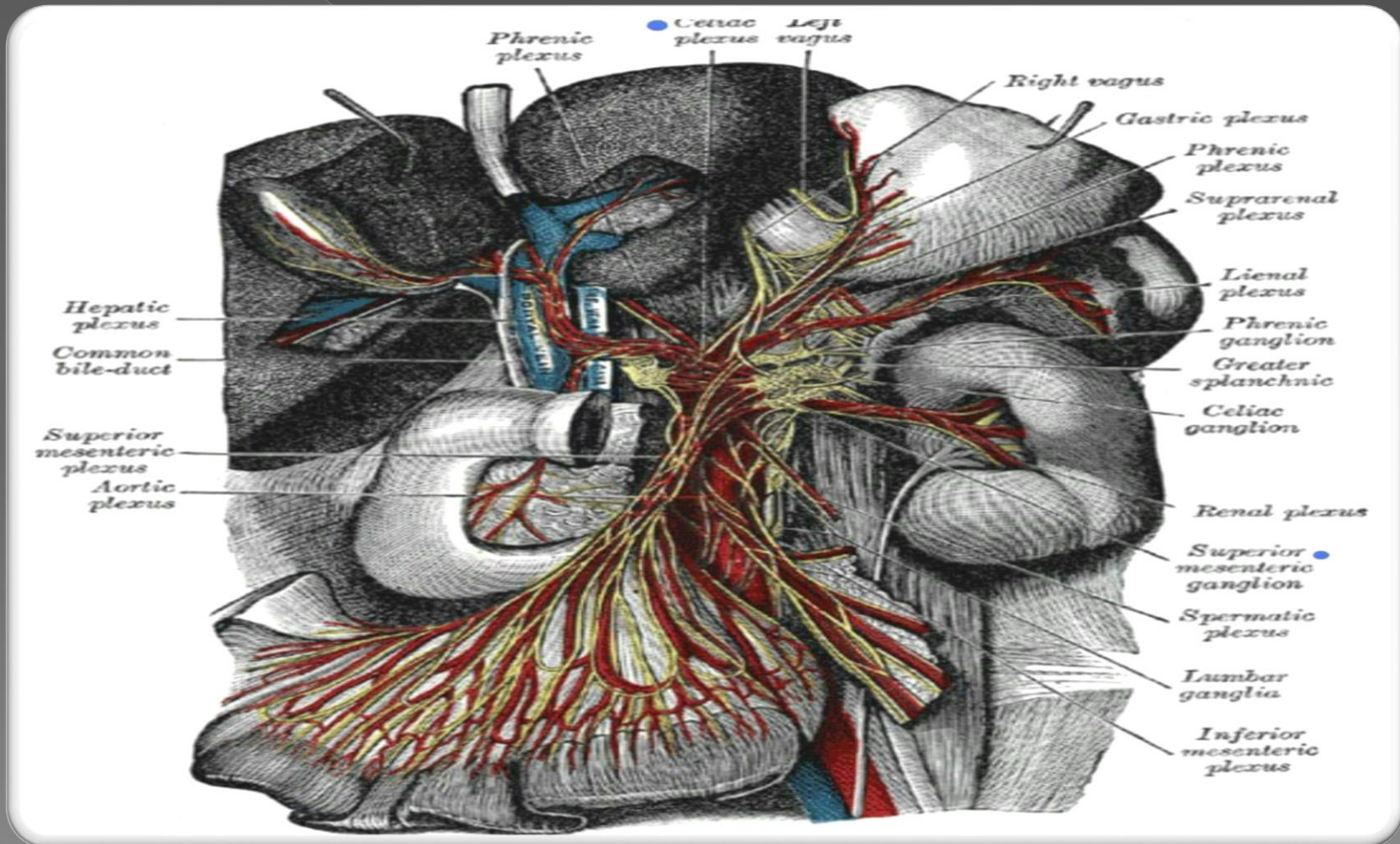
Anatomy of Small Intestine

Anatomy of Small Intestine

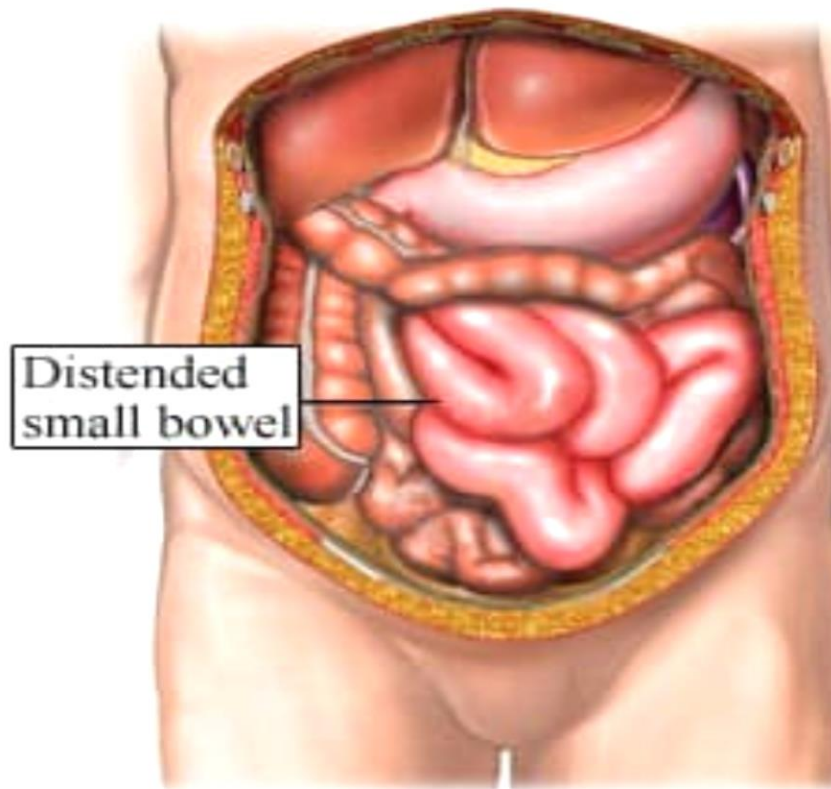
# The sympathetic nerve supply



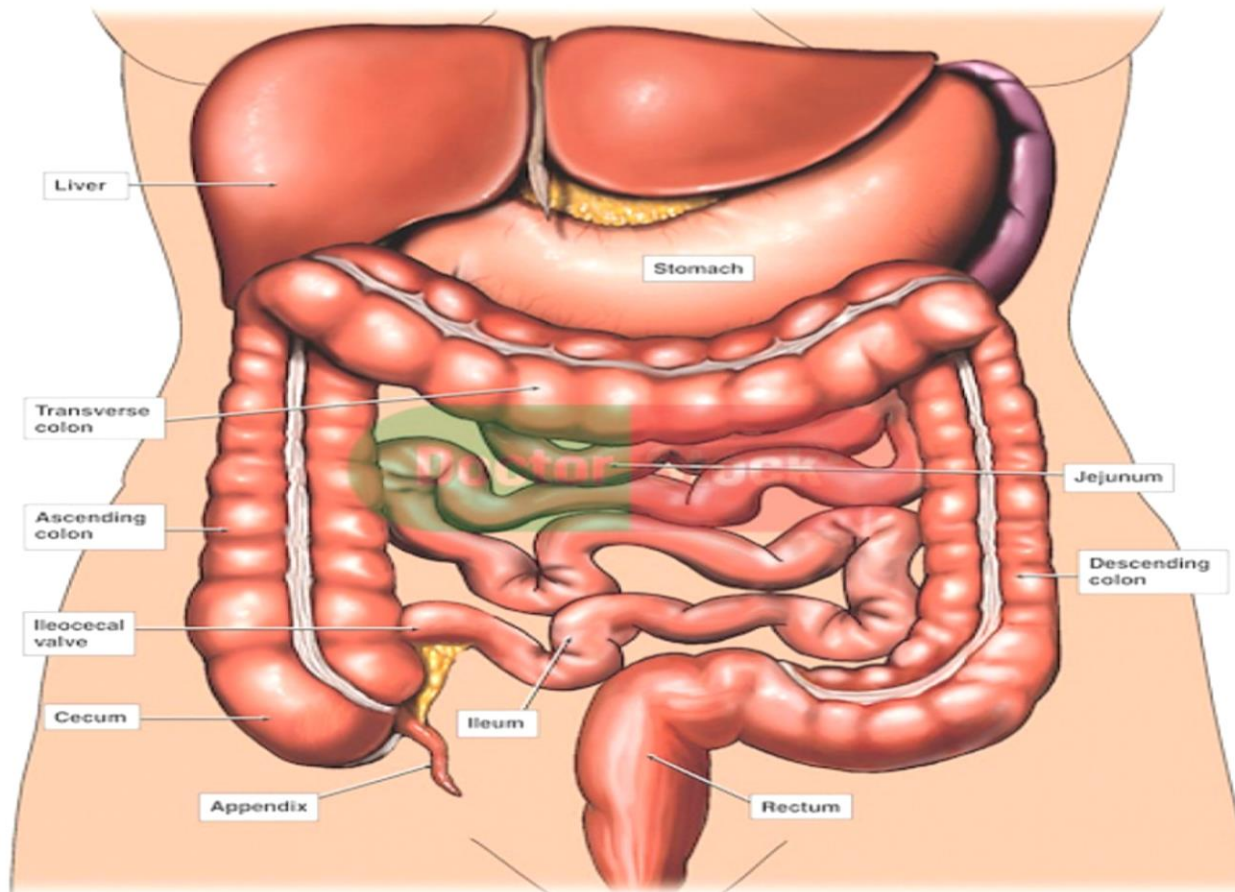
# The parasympathetic nerve supply



# Clinical cases:- Paralytic ileus

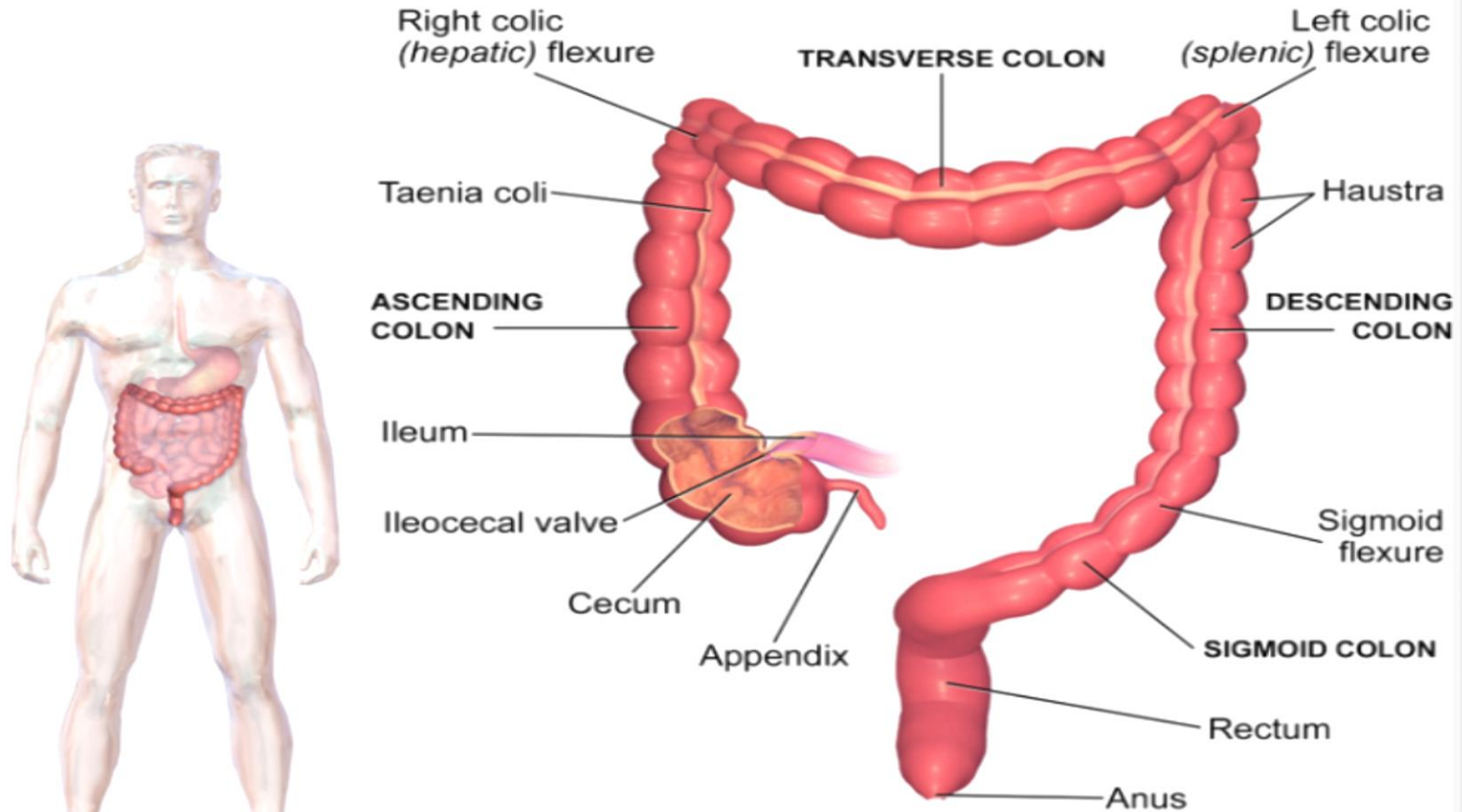


# The large intestine:



Anterior view

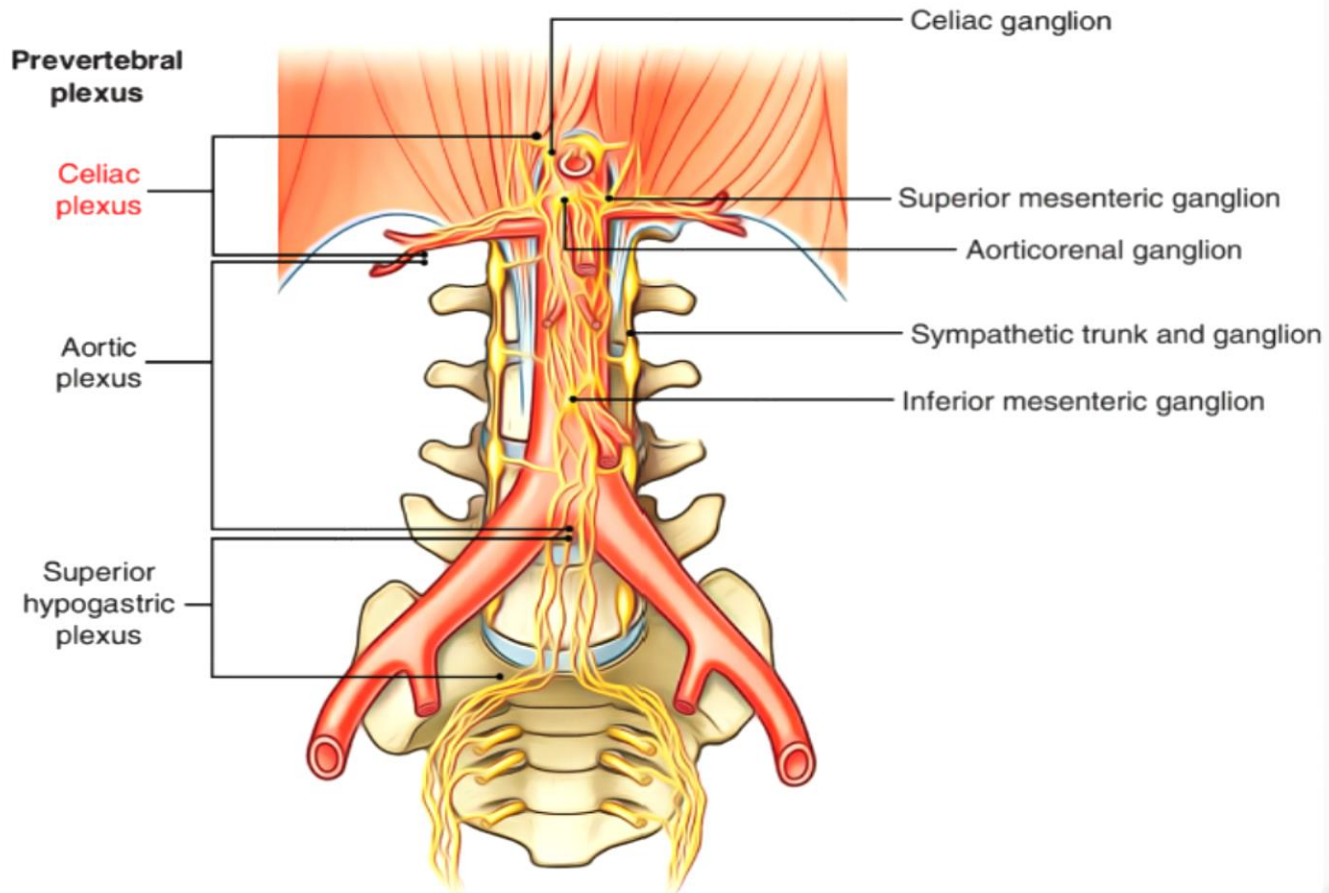
# The Anatomical Position



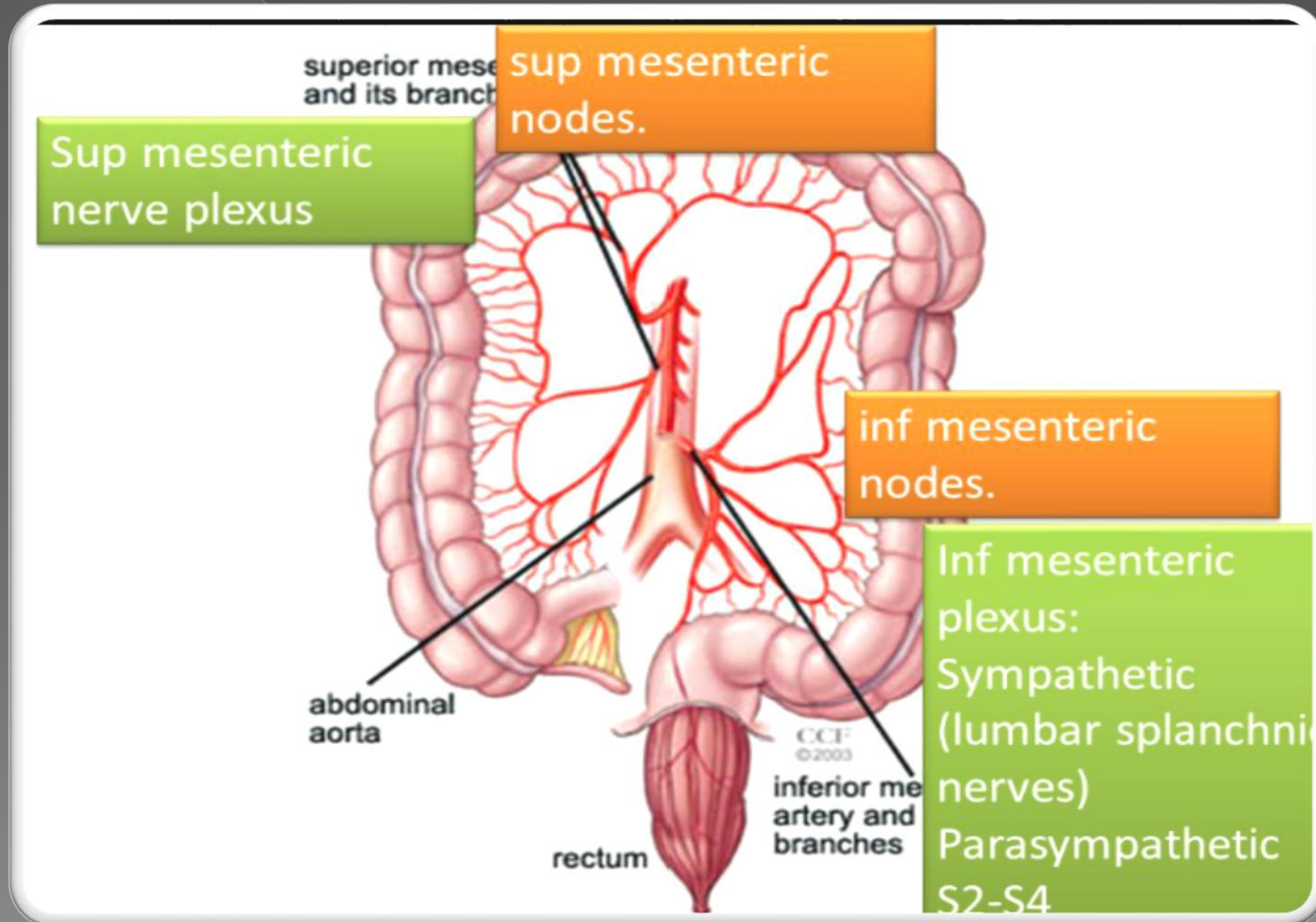
**The Large Intestine**



# The nerve supply



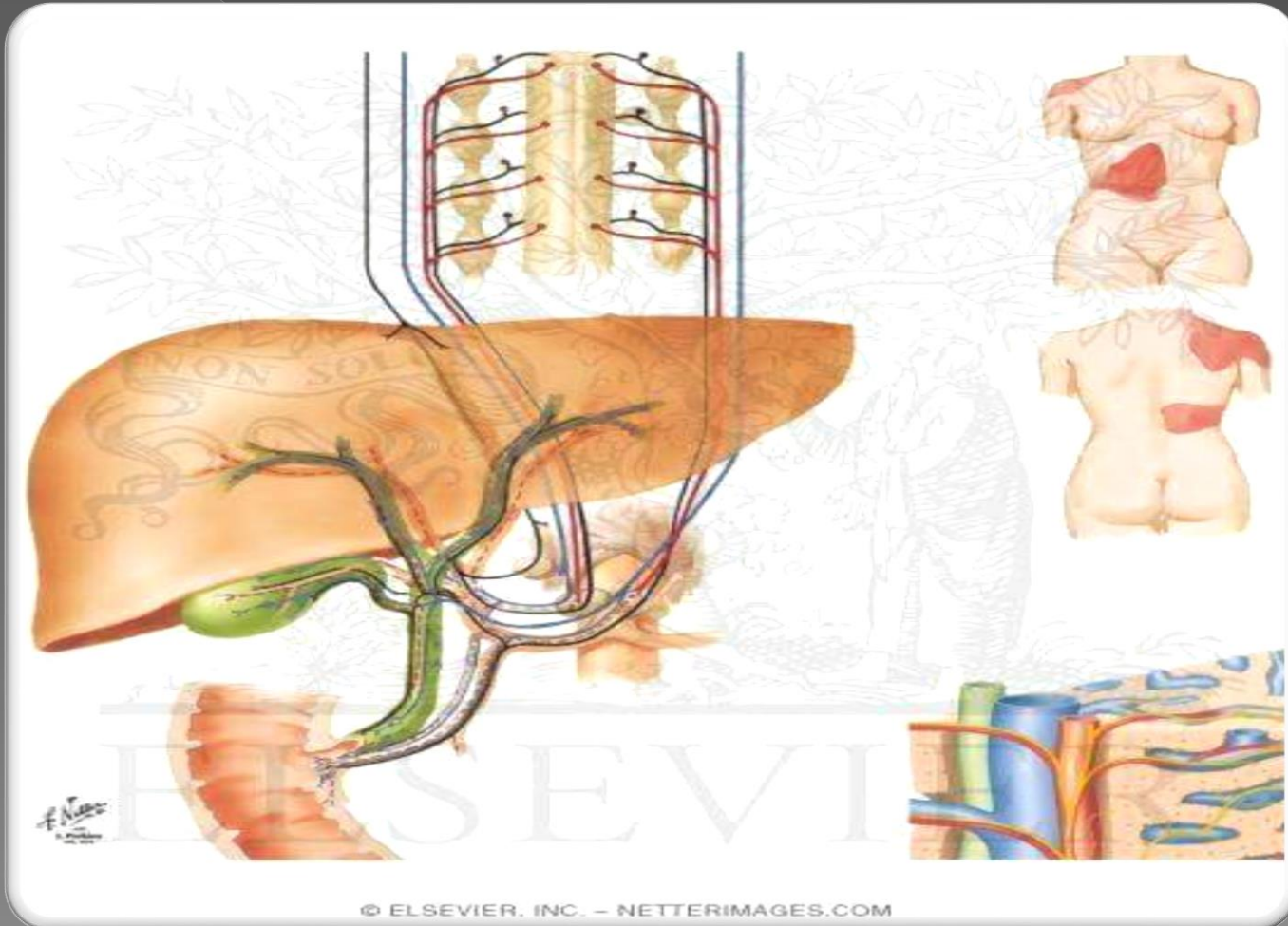
# The nerve supply:



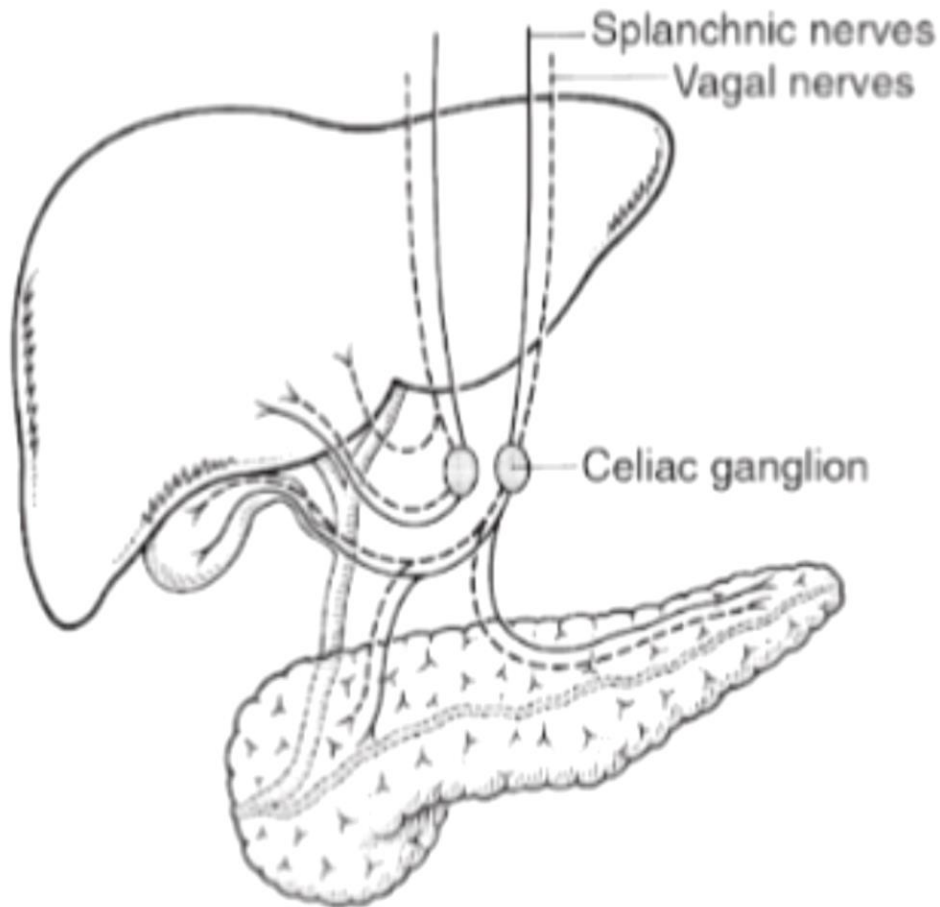
# The liver:



# The sympathetic nerve supply:



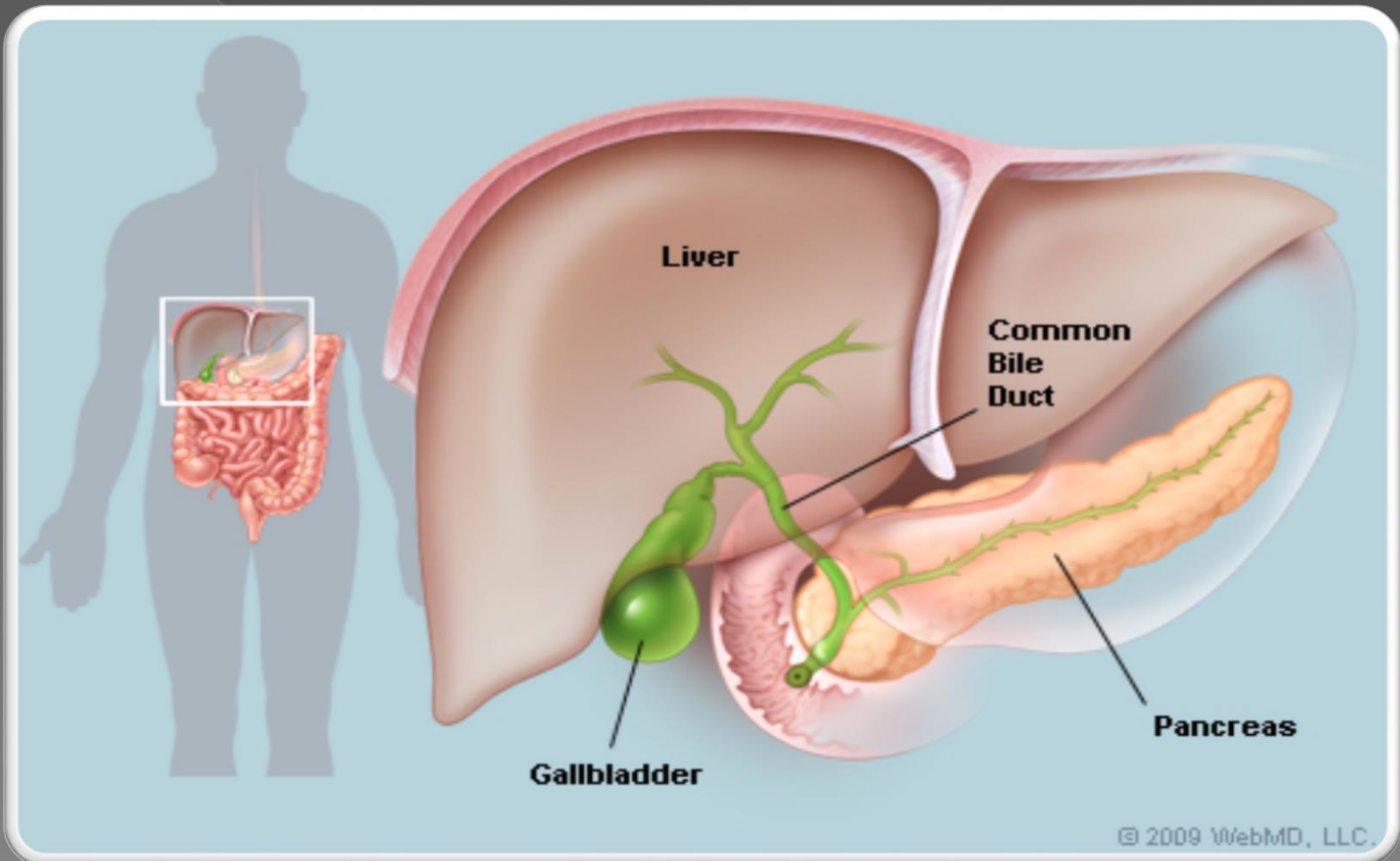
# The parasympathetic nerve supply :



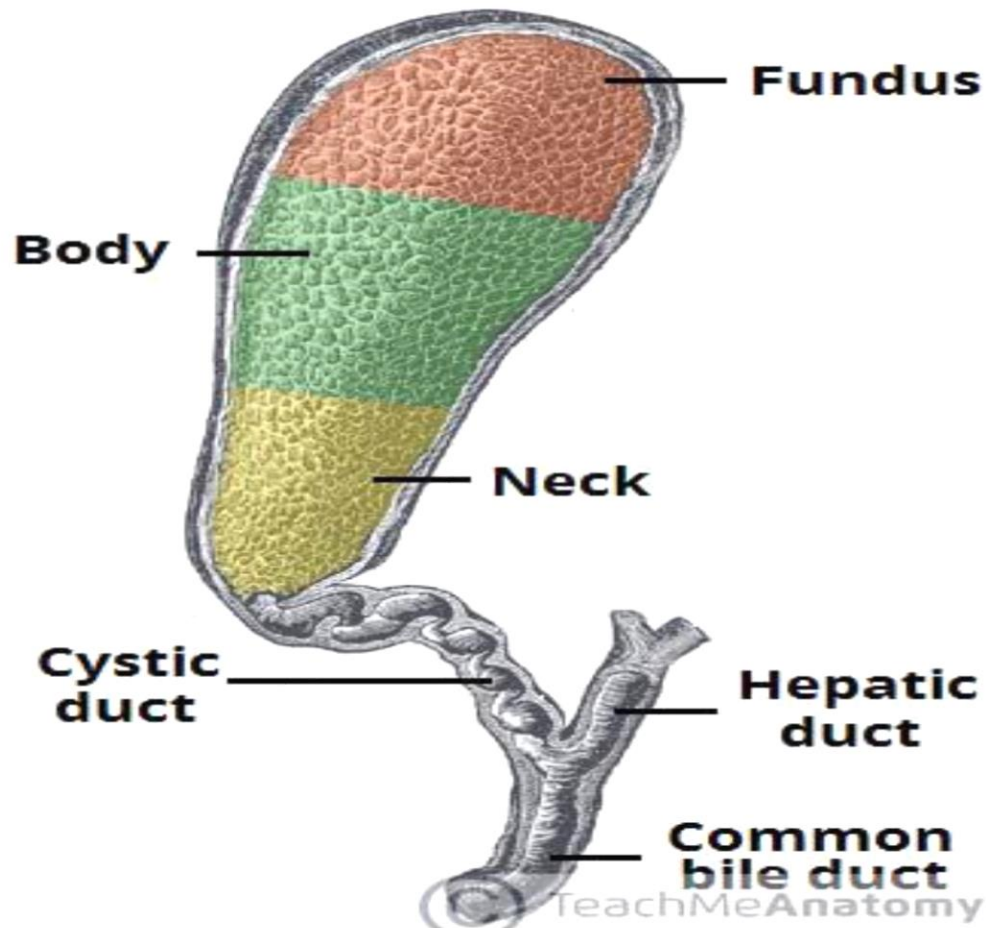
# The gall bladder:



# The anatomical position:

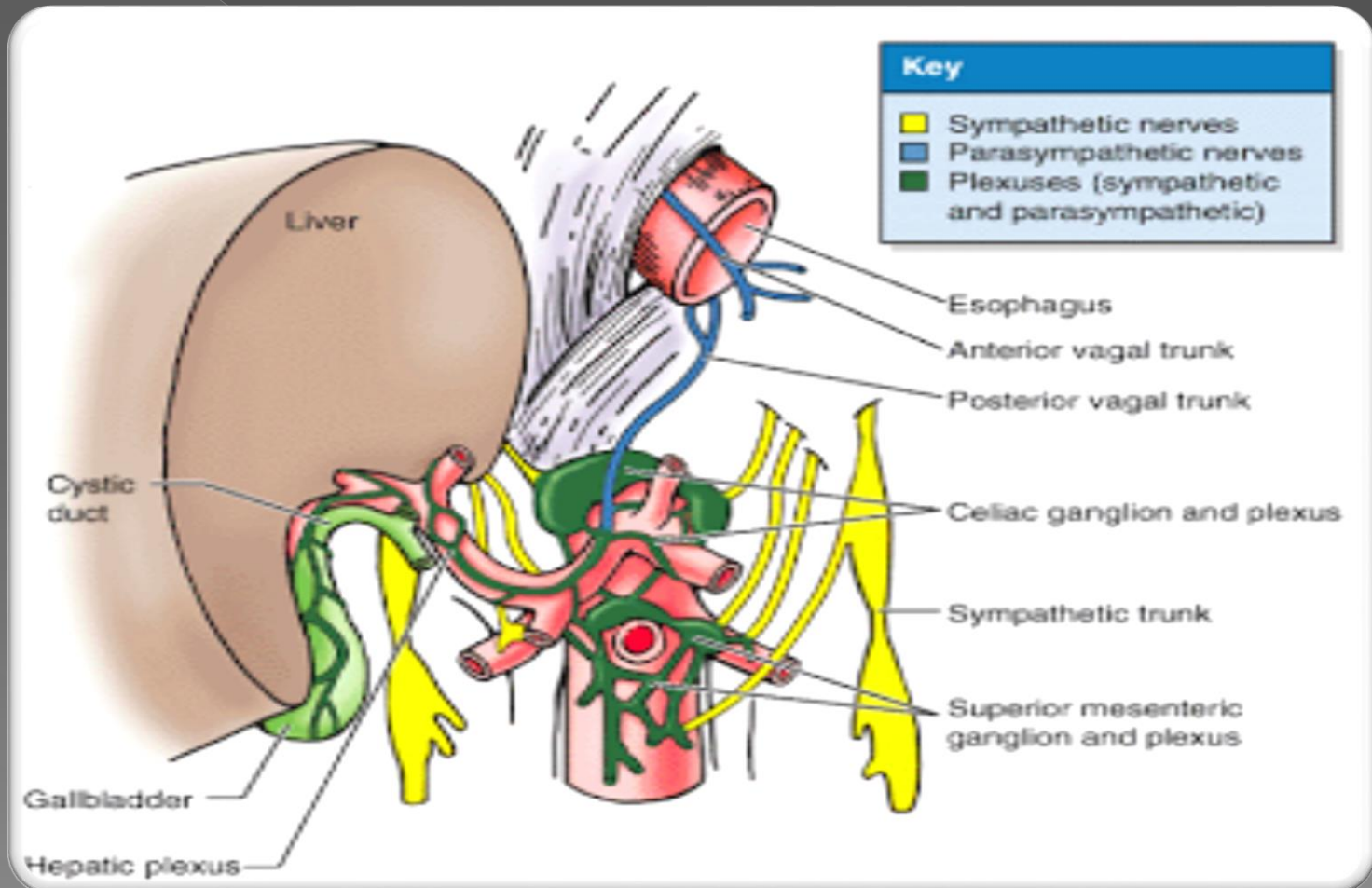


# The anatomical division:



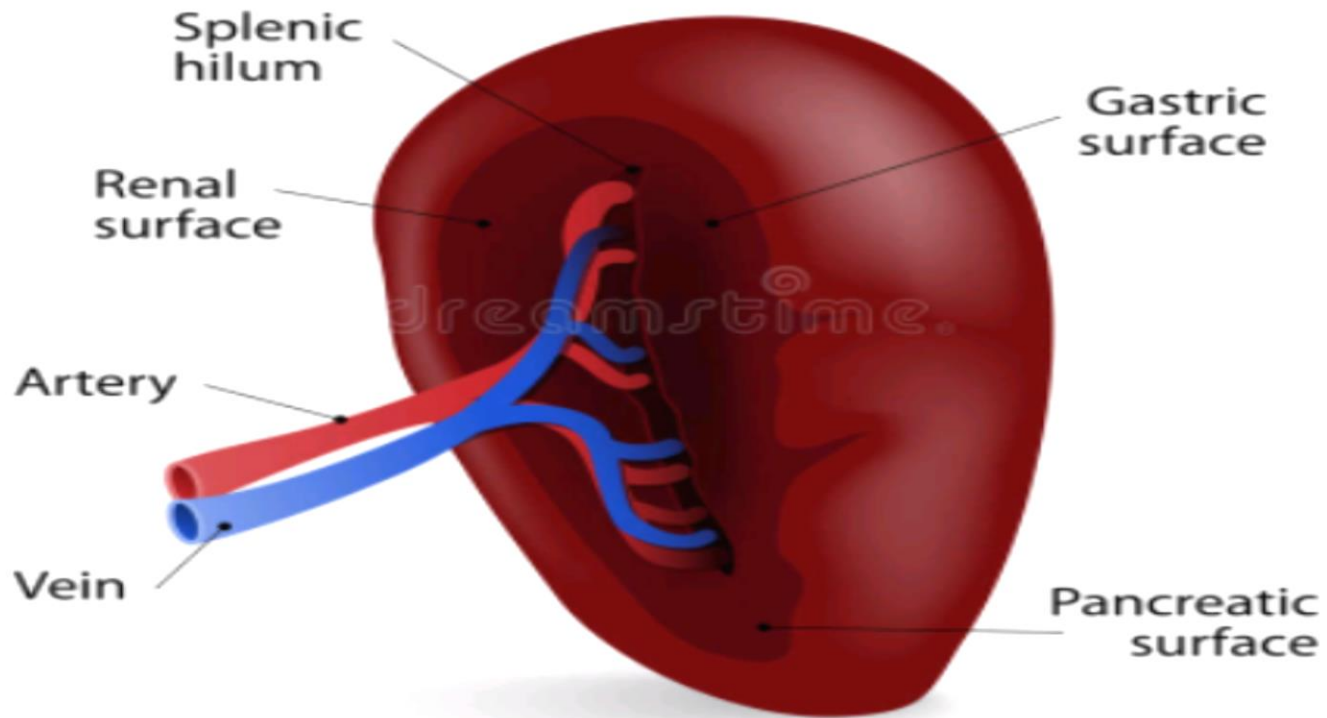


# The nerve supply of gall bladder:

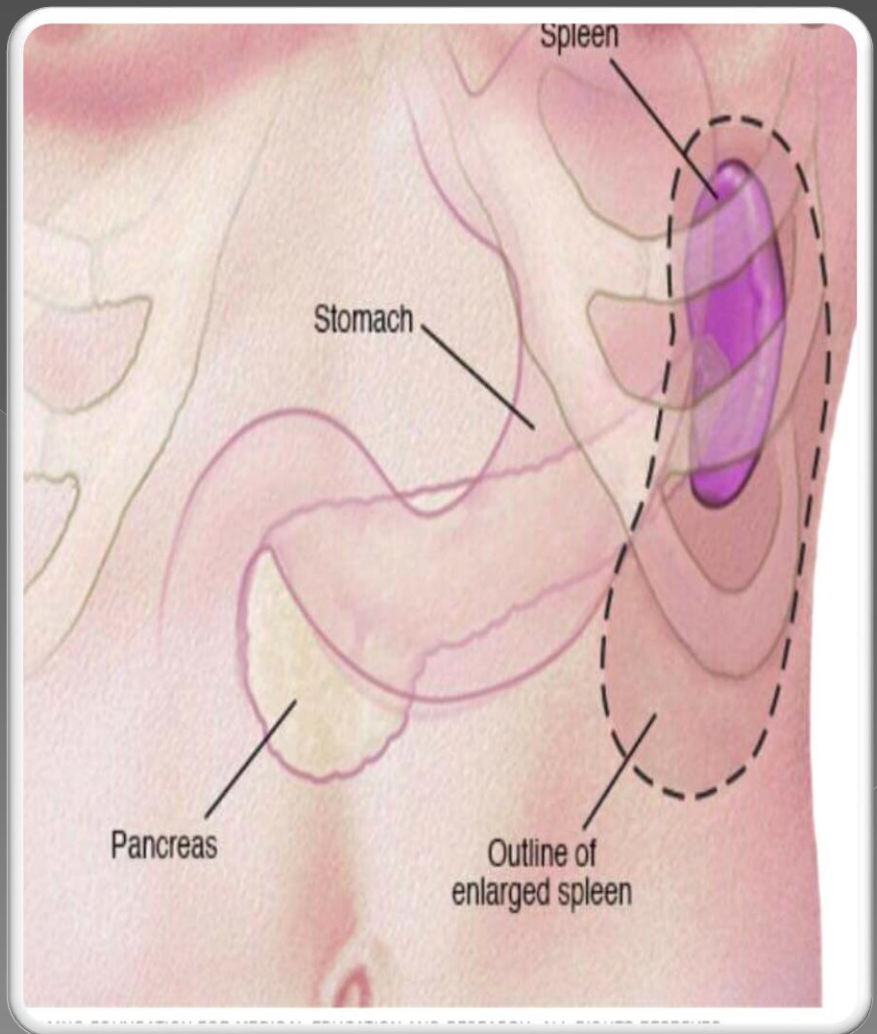
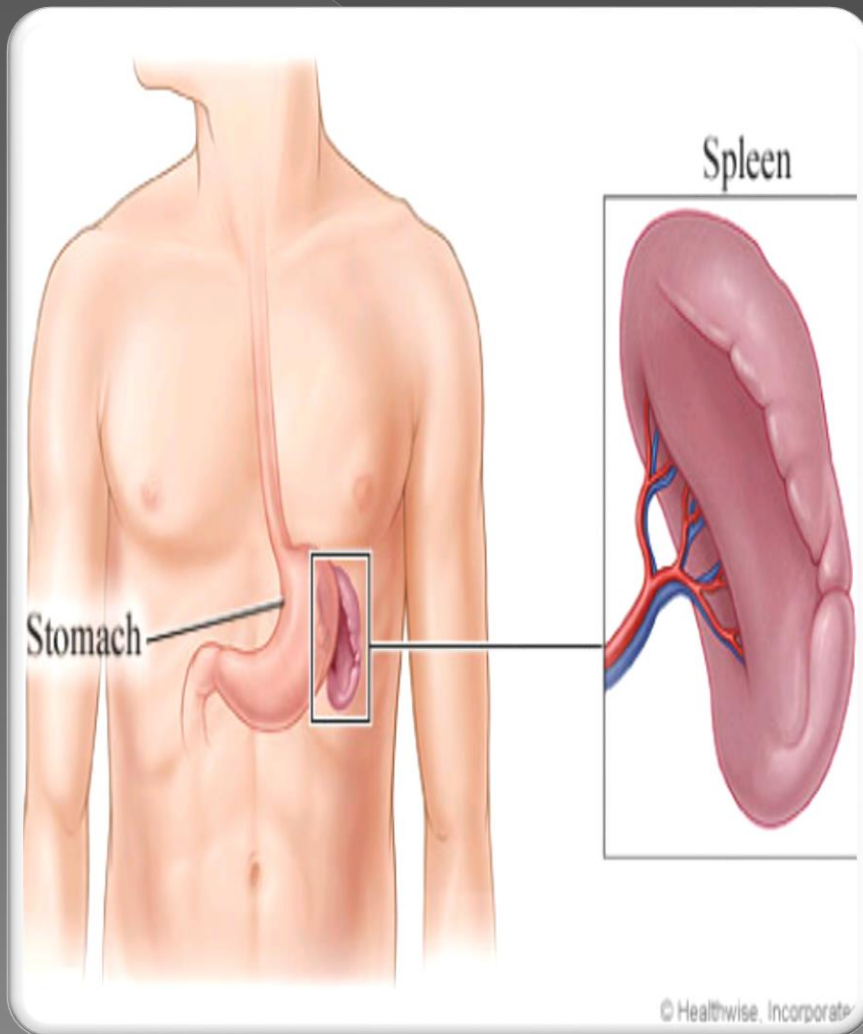


# The spleen:

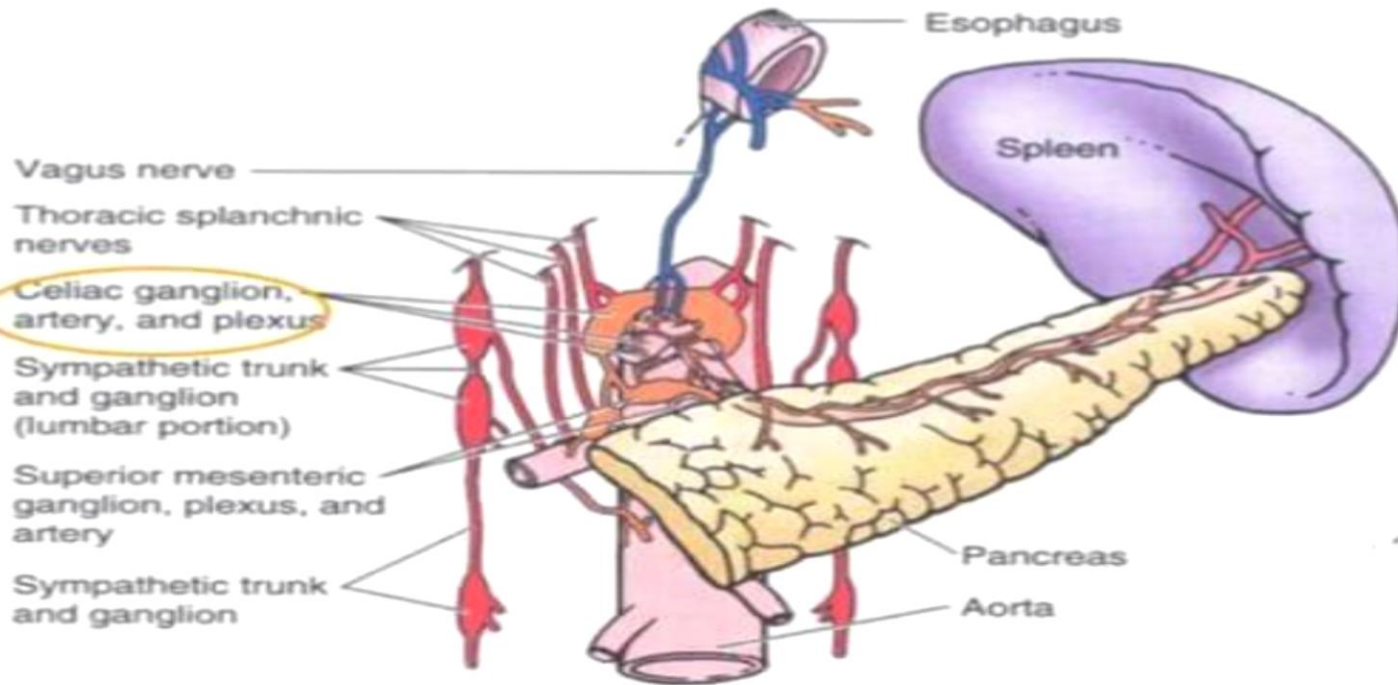
## HUMAN SPLEEN



# The anatomical position:



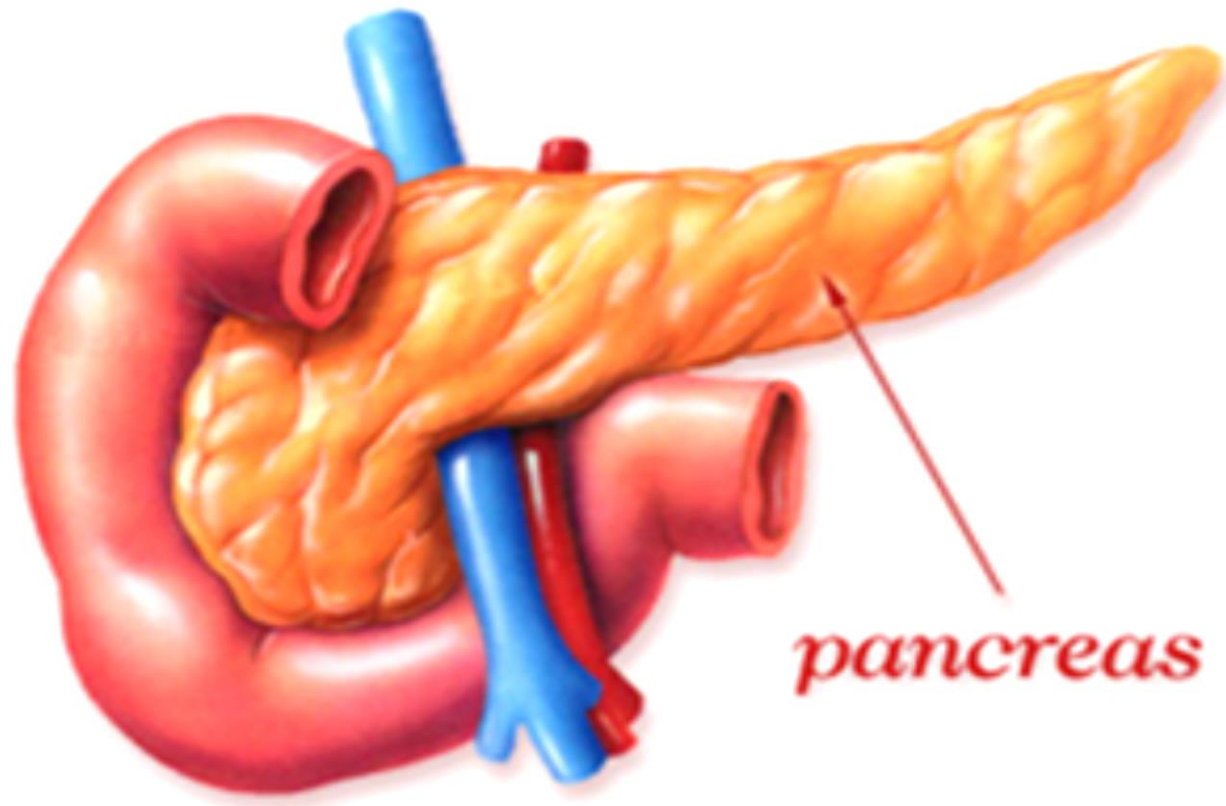
# The nerve supply:



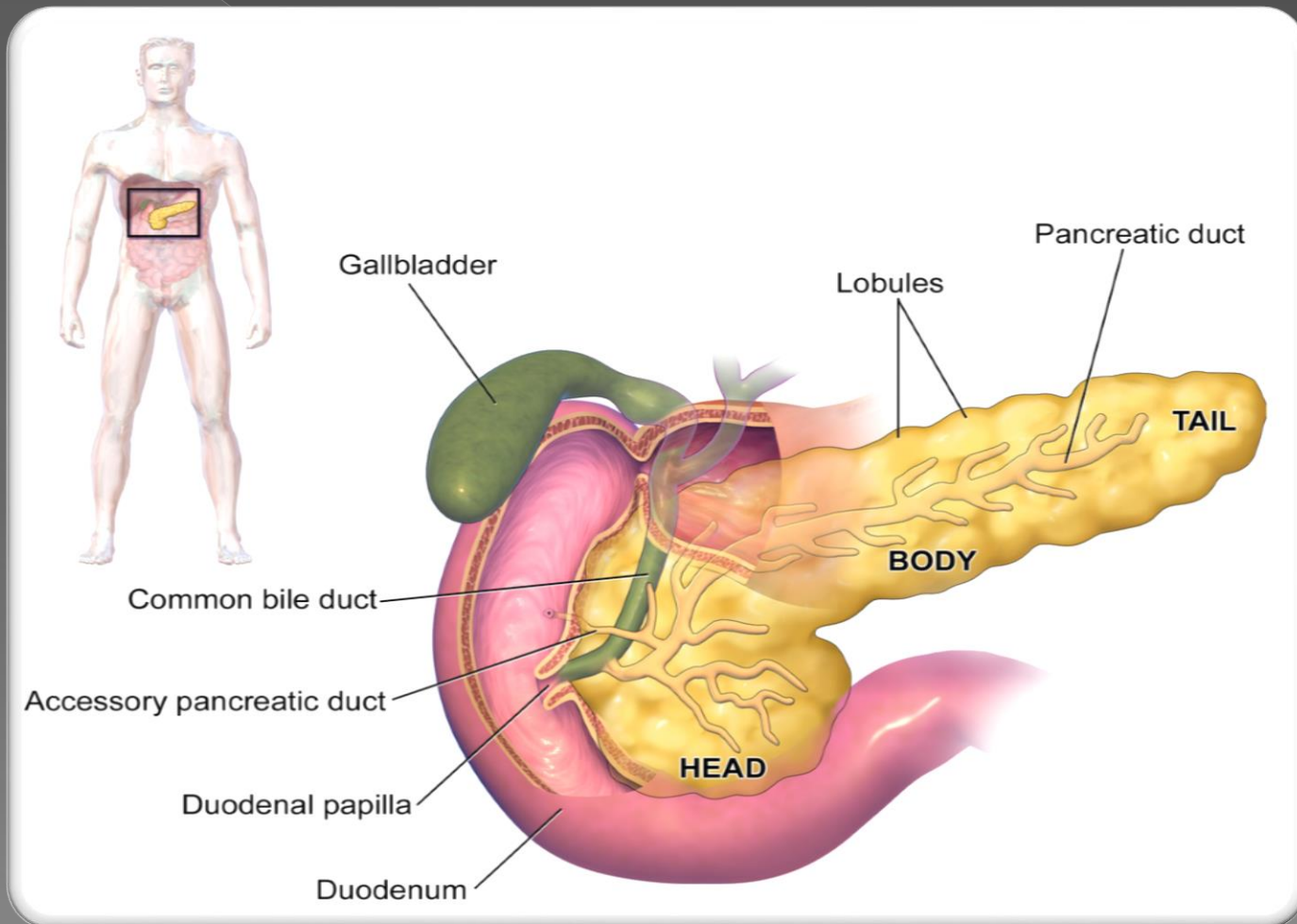
Key	
■	Sympathetic nerves
■	Parasympathetic nerves
■	Plexuses (sympathetic and parasympathetic)

(B) Innervation

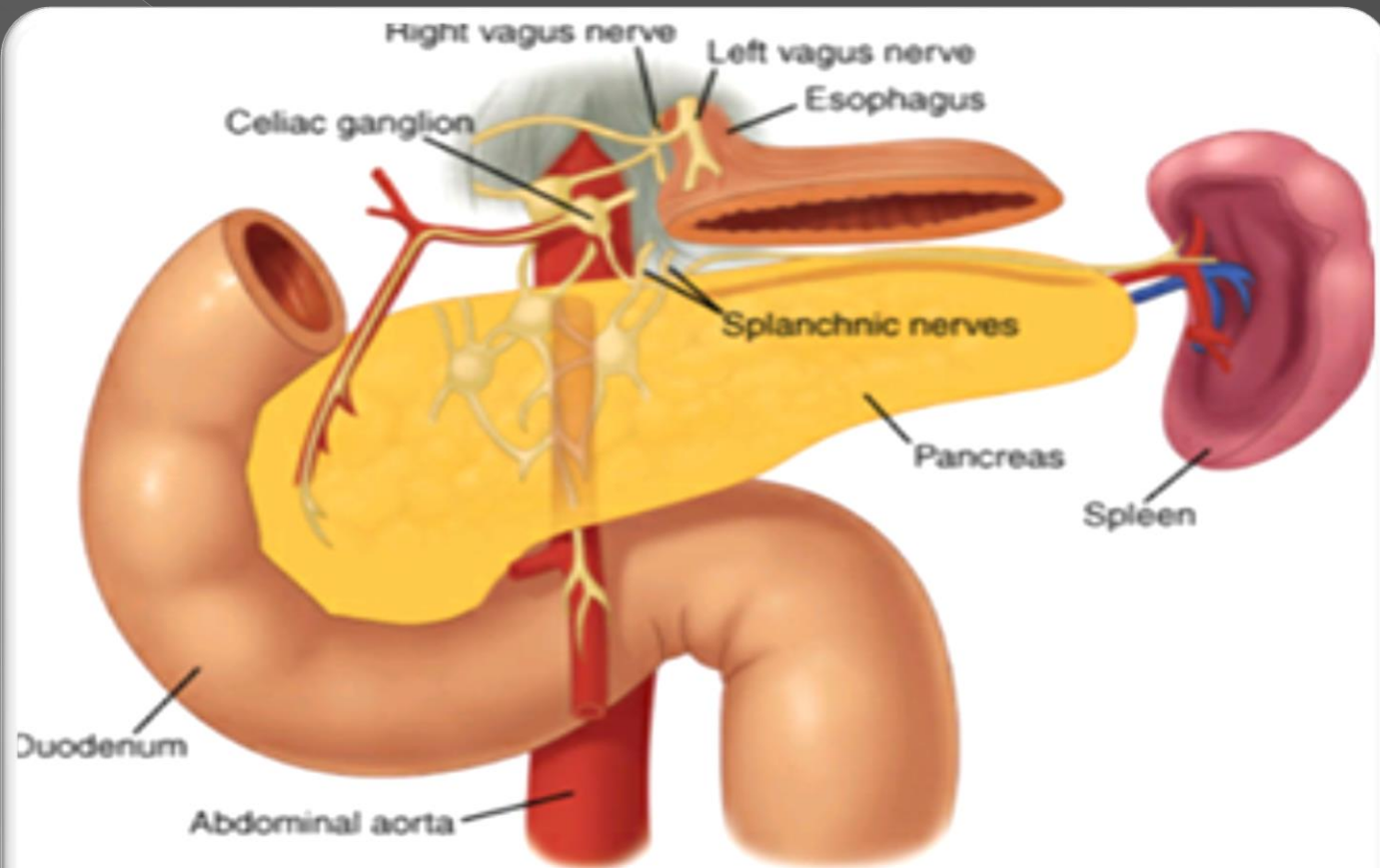
# The pancreas:



# The anatomical position



# Nerve supply

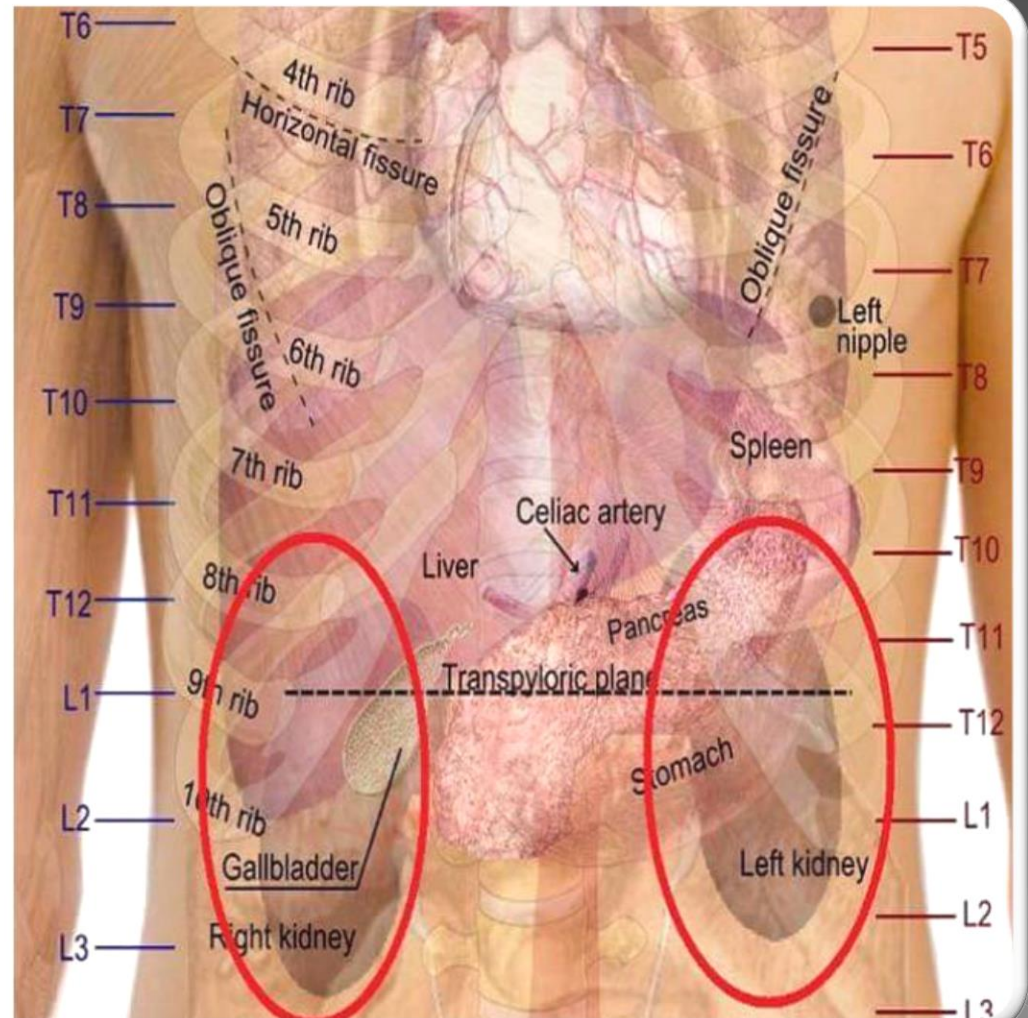


Source: Brunicaudi FC, Andersen DK, Billiar TR, Dunn DL, Hunter JG, Matthews JB, Pelleck RE: Schwartz's Principles of Surgery, 9th Edition; <http://www.accessmedicine.com>  
Copyright © The McGraw-Hill Companies, Inc. All rights reserved.

# The Kidney

## The anatomical position:

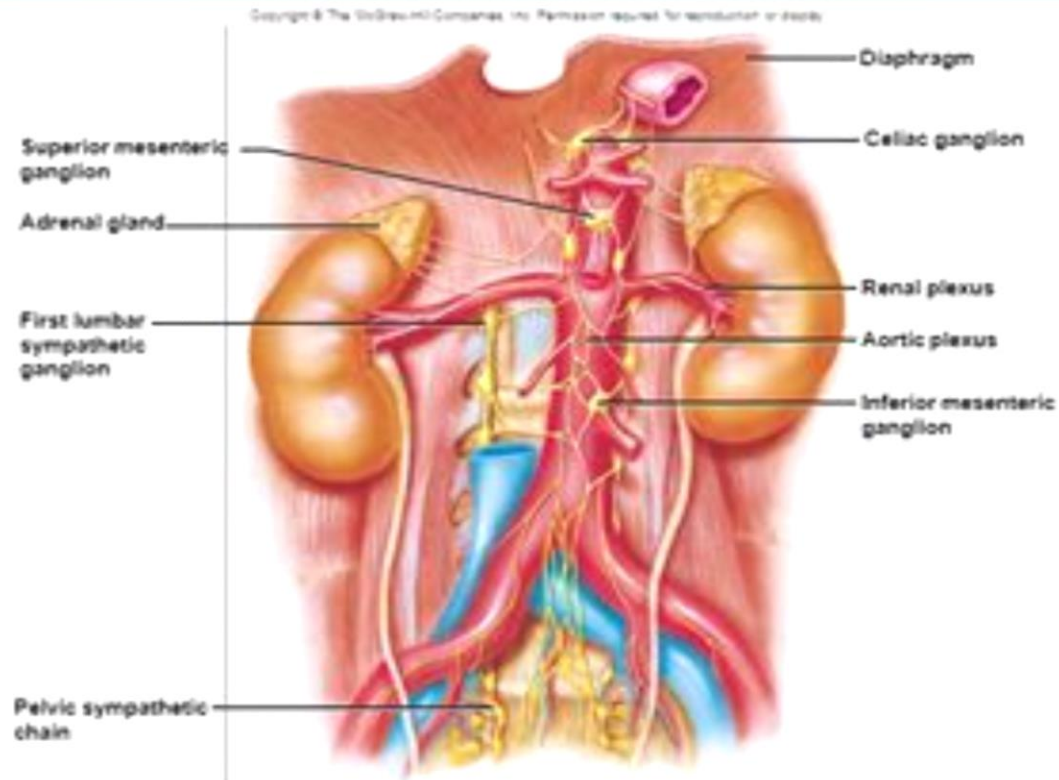
Relationship of the Kidneys to Vertebrae and Ribs



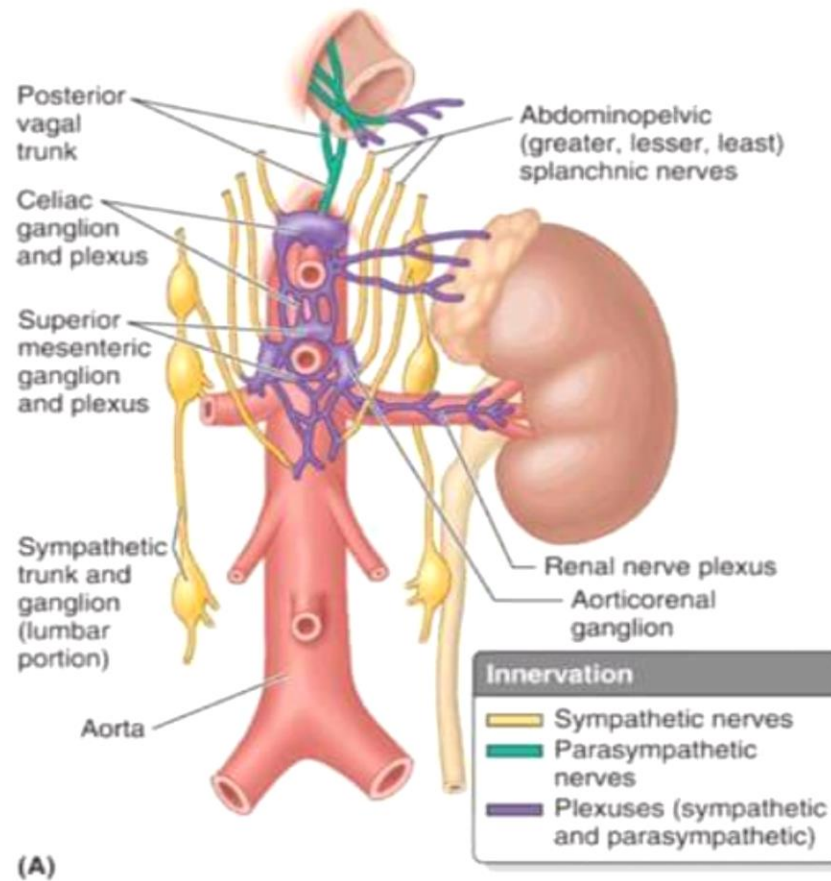


# The nerve supply:

## Collateral Sympathetic Ganglia

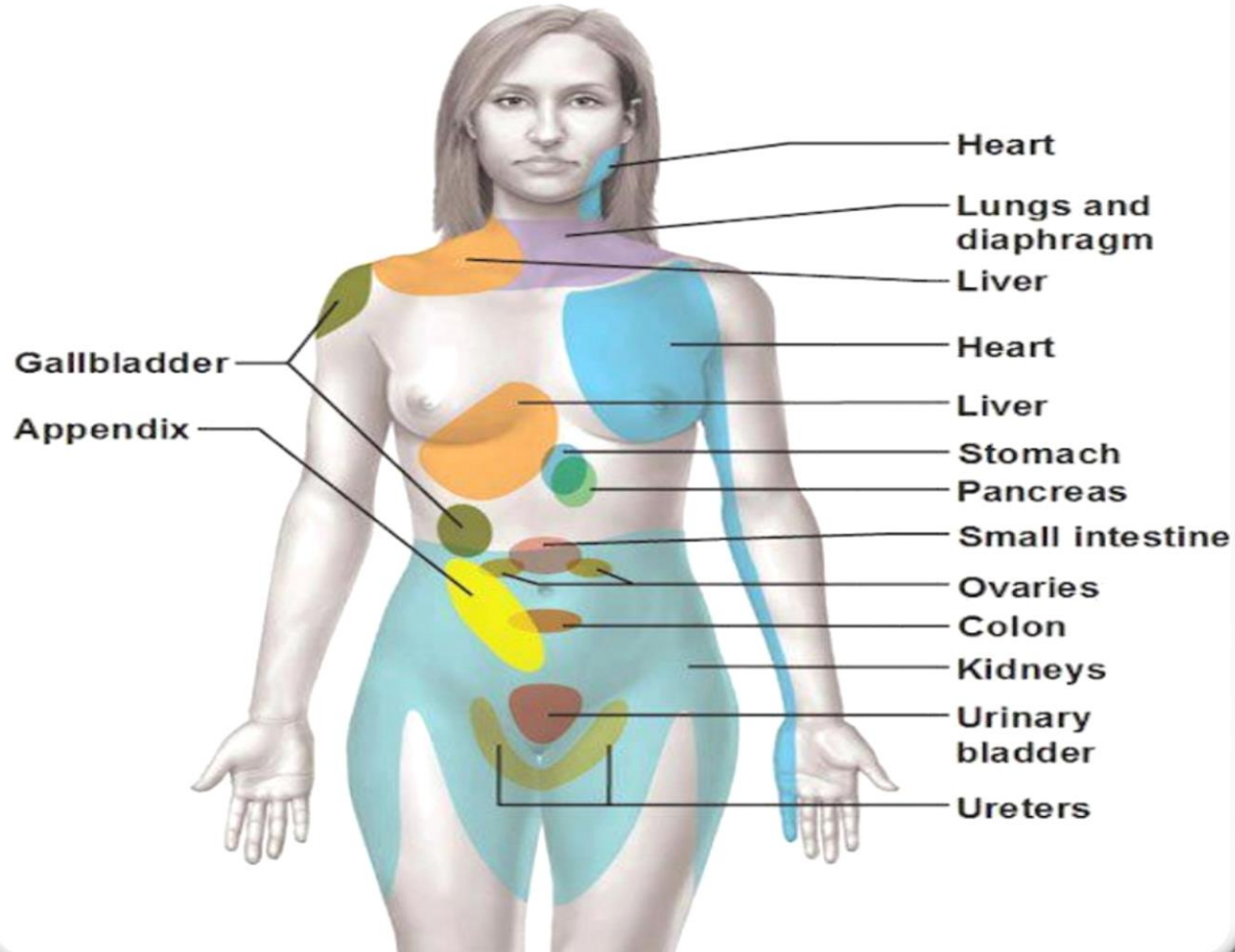


# The sympathetic & parasympathetic nerve supply:

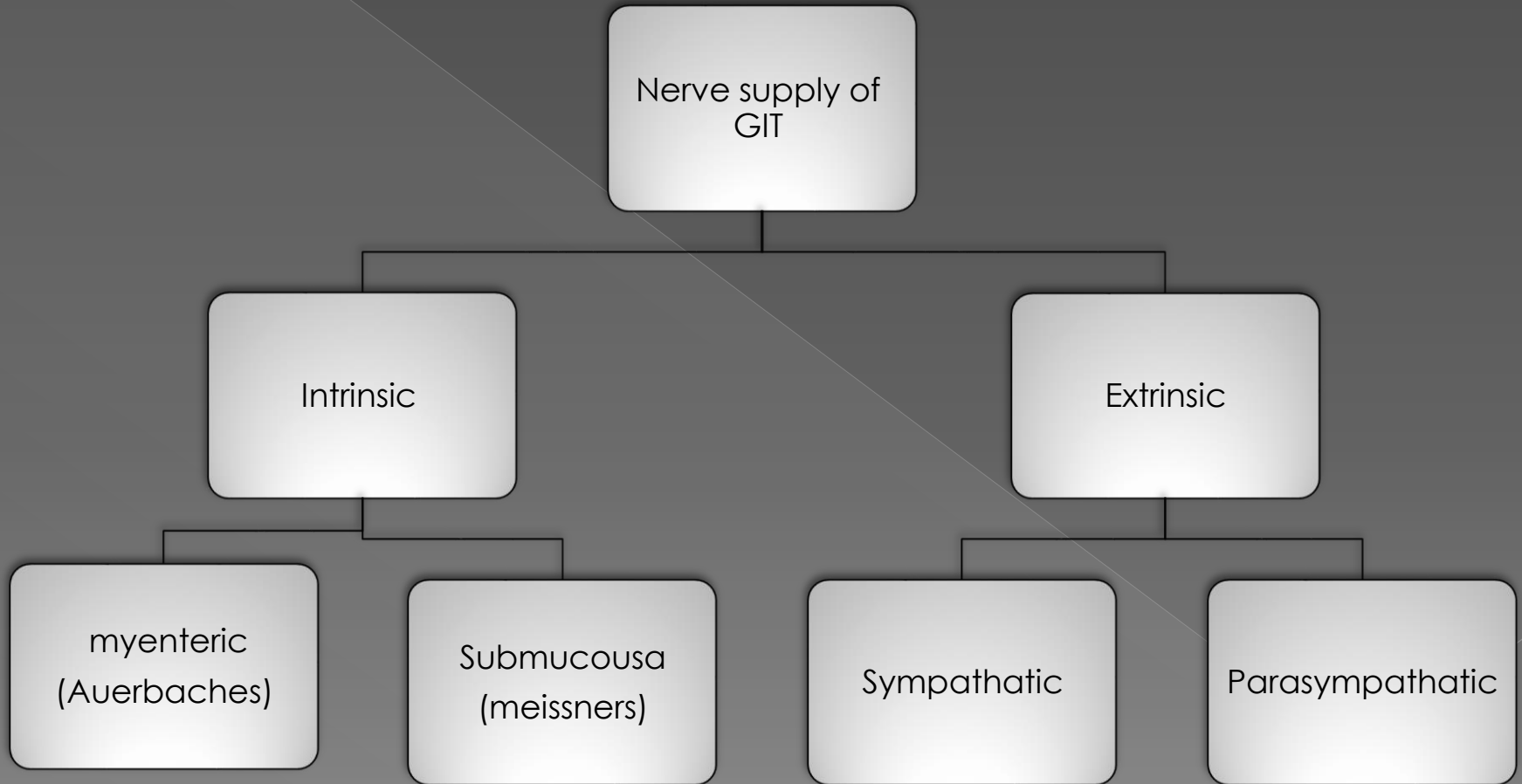


# The referred pain:

**A Map of Referred Pain**



# SUMMARY:



*Thank You*