

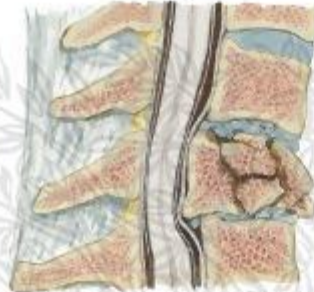




ELSEVIER



Compression Fractures of Cervical Spine (continued)



Type III. Fracture through entire vertebral body with fragmentation of its anterior portion. Posterior cortex intact but projects into spinal canal causing damage to cord and/or nerve roots



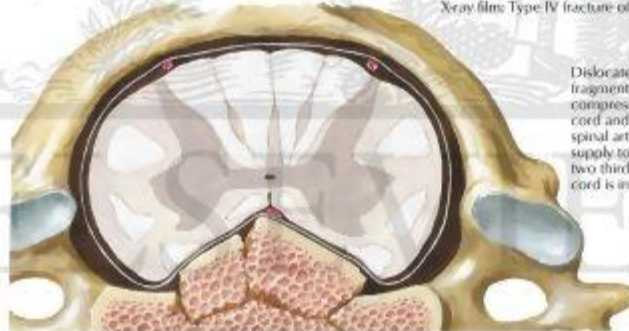
X-ray film: Type III fracture of C5



Type IV. "Burst" fracture. Entire vertebral body crushed, with intraspinal bone fragments



X-ray film: Type IV fracture of C6



Dislocated bone fragments compressing spinal cord and anterior spinal artery. Blood supply to anterior two thirds of spinal cord is impaired.

