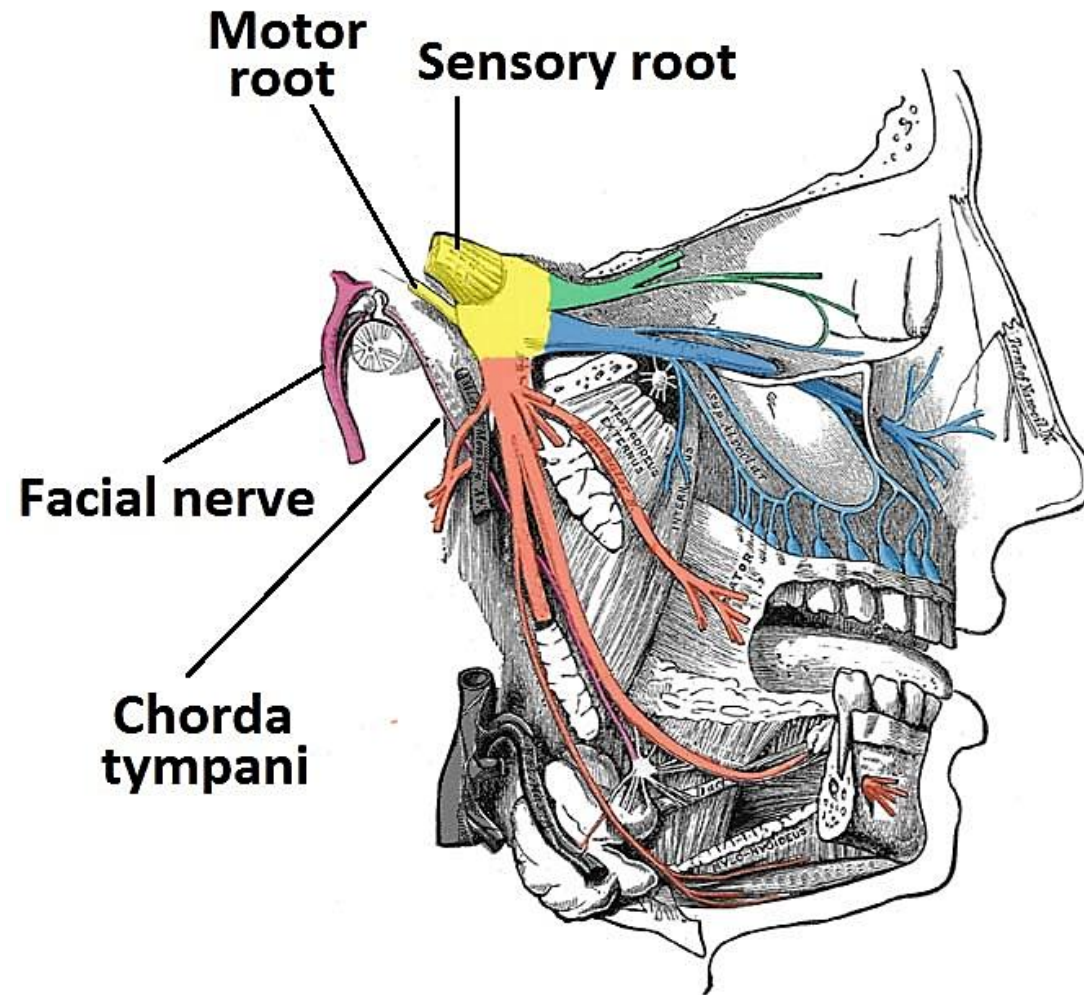


Maxillary N. (CN Vc) & Mandibular N. (CN Vb)

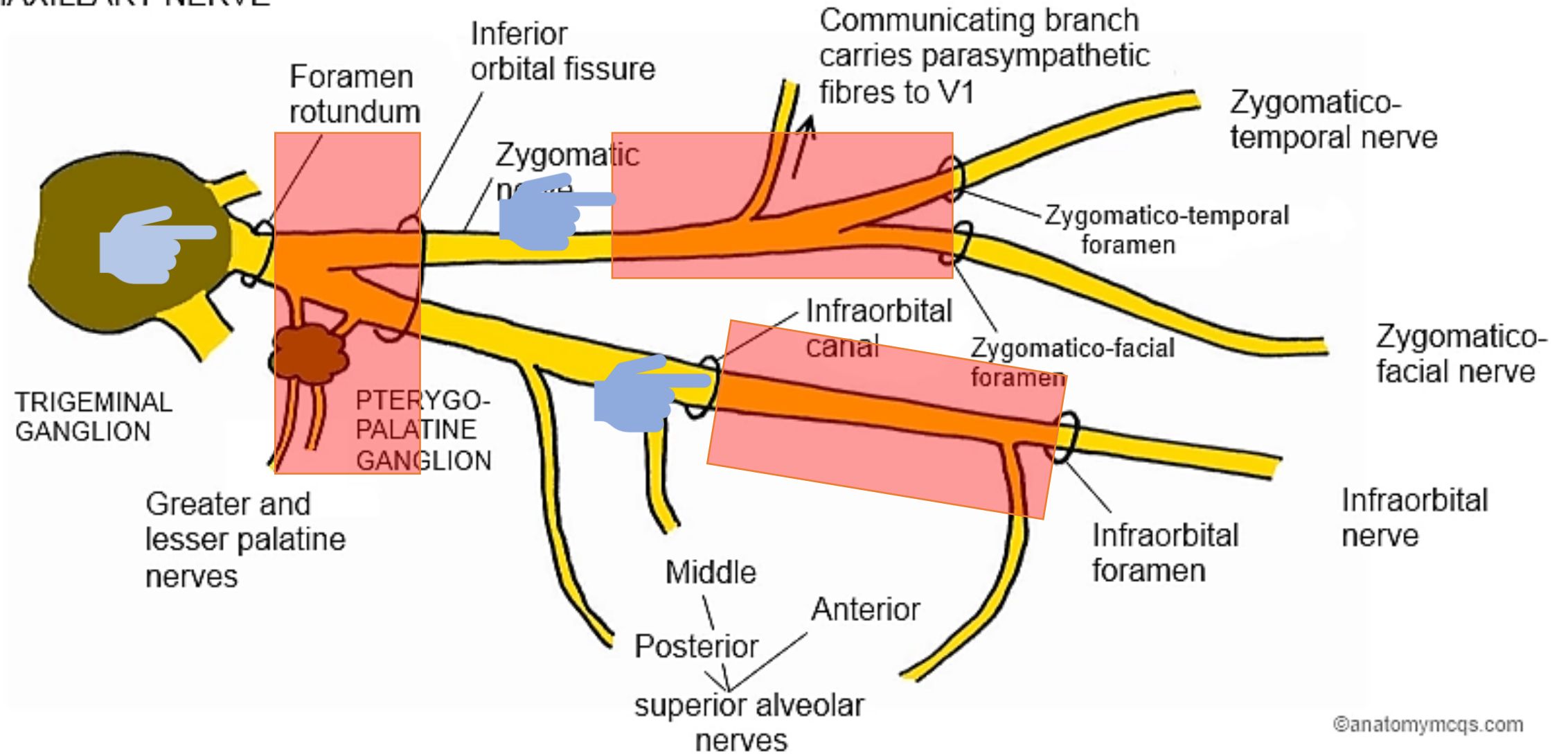
Dr Maan Al-Abbasi
PhD (UK), MBChB, MD

Trigeminal
Nerve (CN-V)

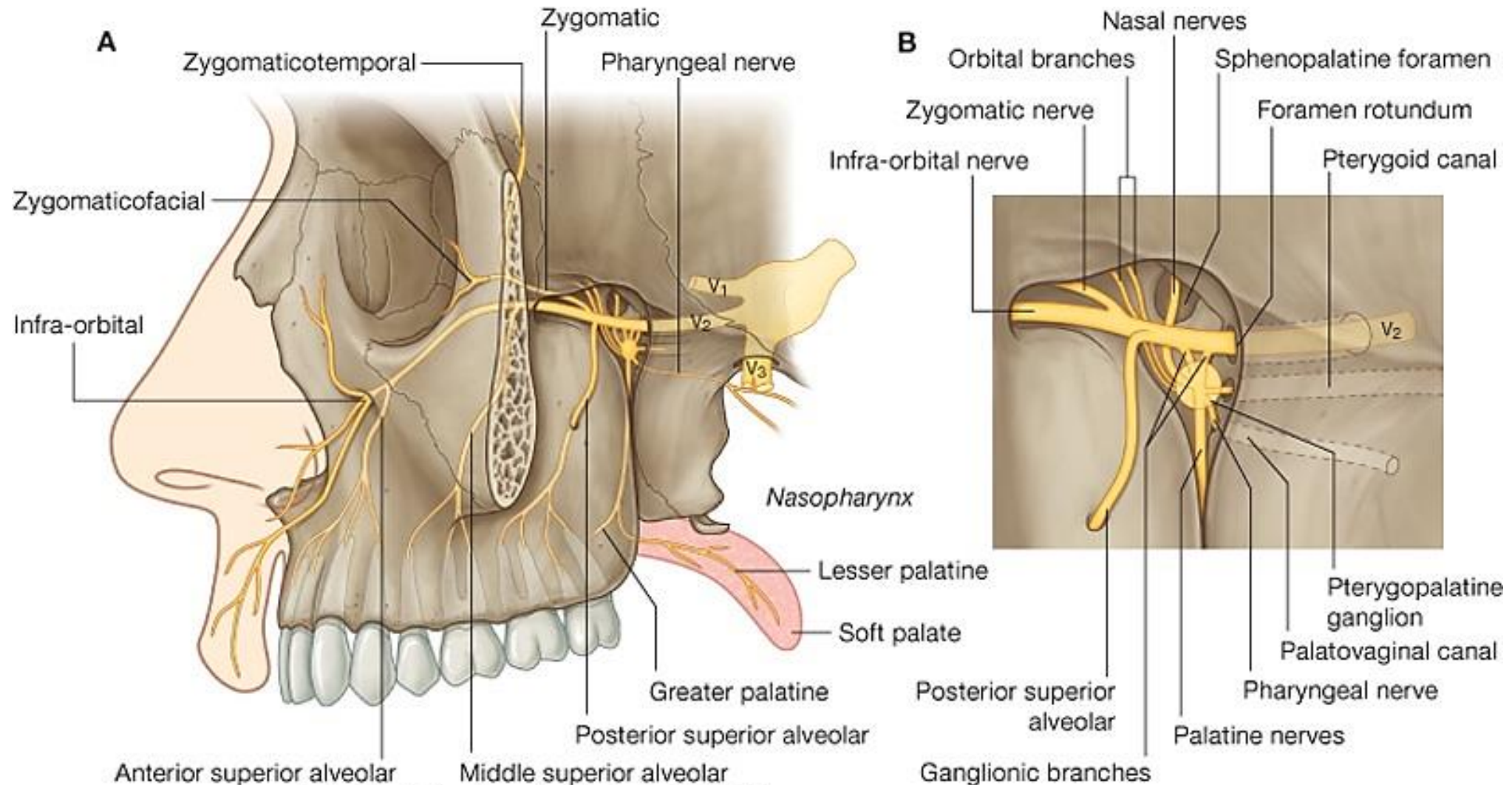


-  Ophthalmic (V1)
-  Maxillary (V2)
-  Mandibular (V3)

MAXILLARY NERVE

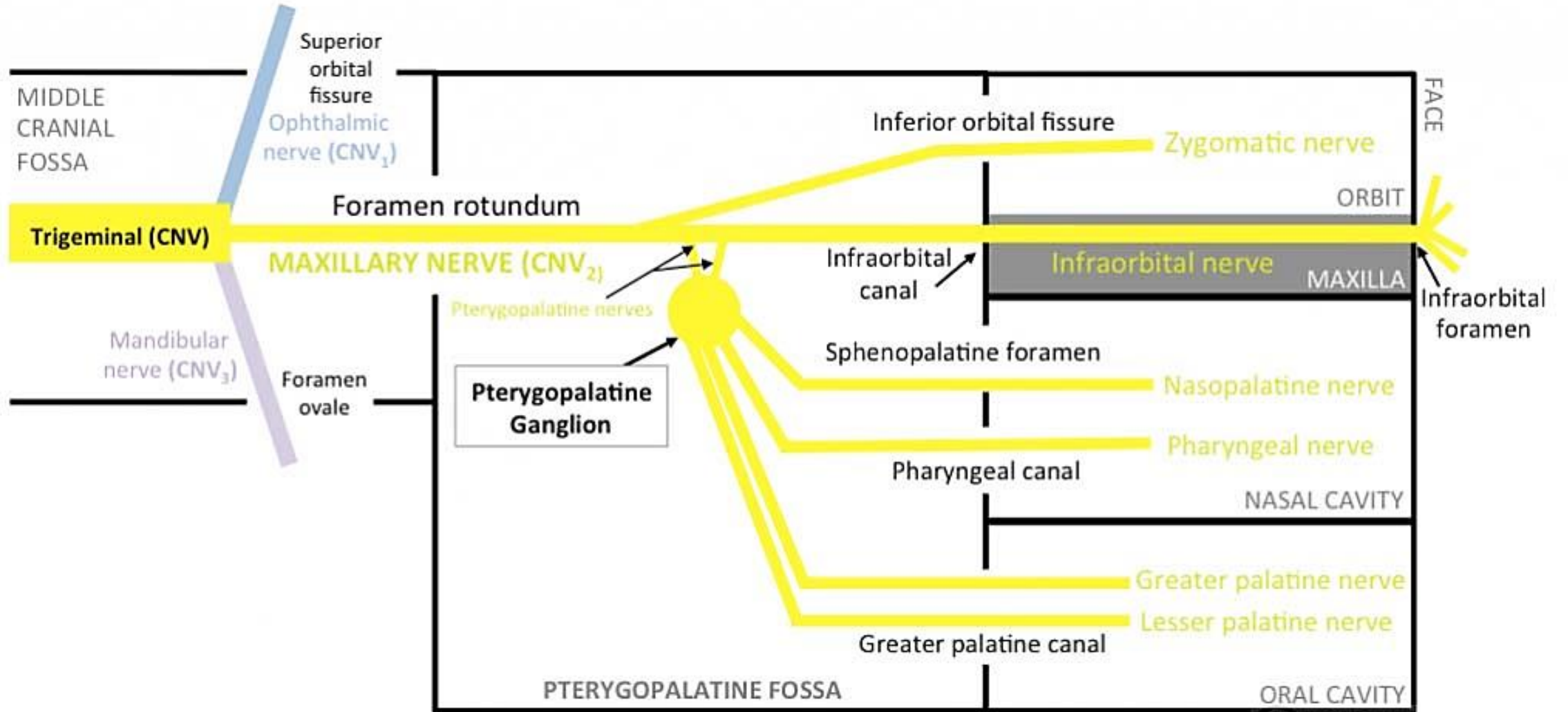


Maxillary Nerve



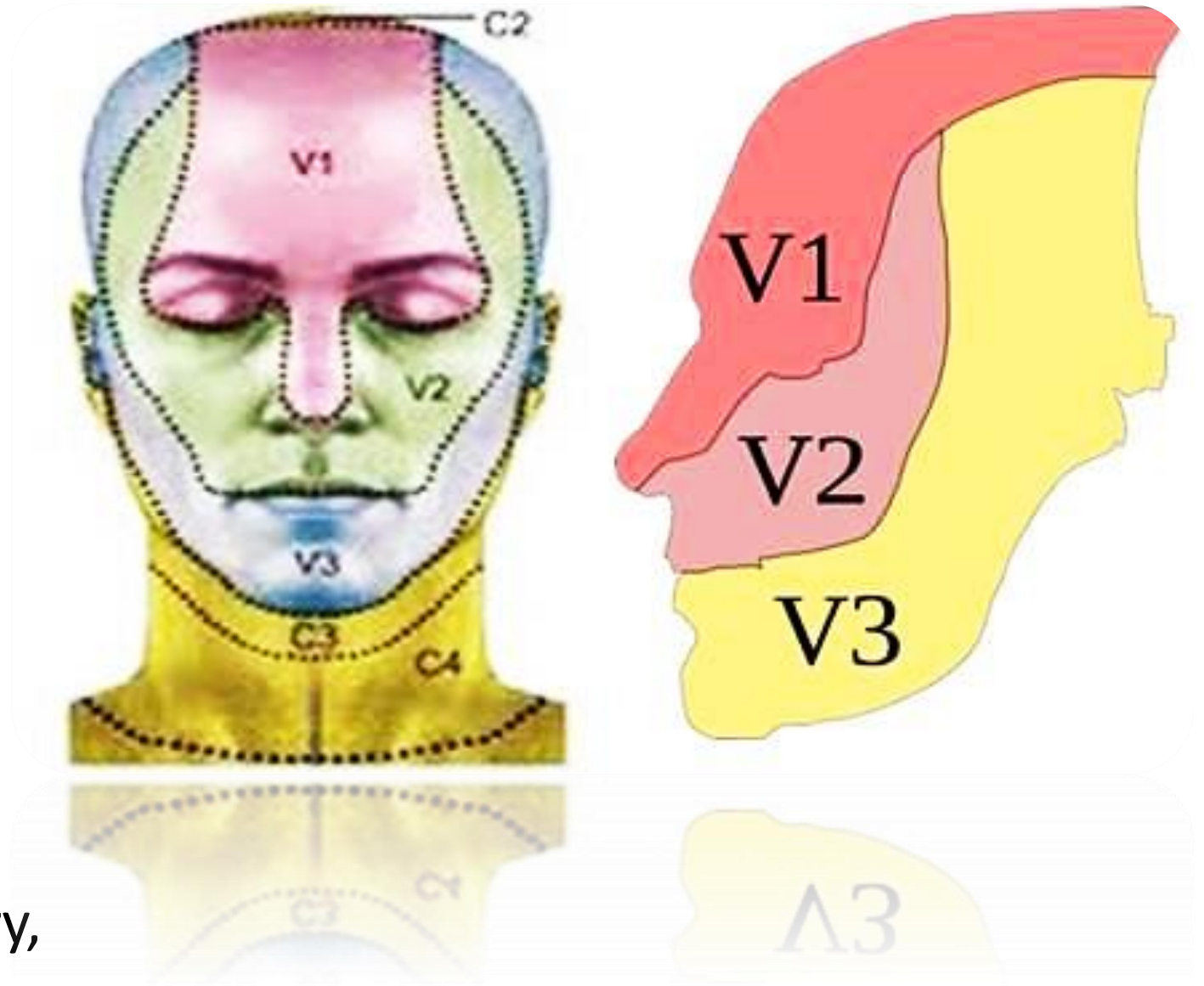
Drake: Gray's Anatomy for Students, 2nd Edition.

Copyright © 2009 by Churchill Livingstone, an imprint of Elsevier, Inc. All rights reserved.



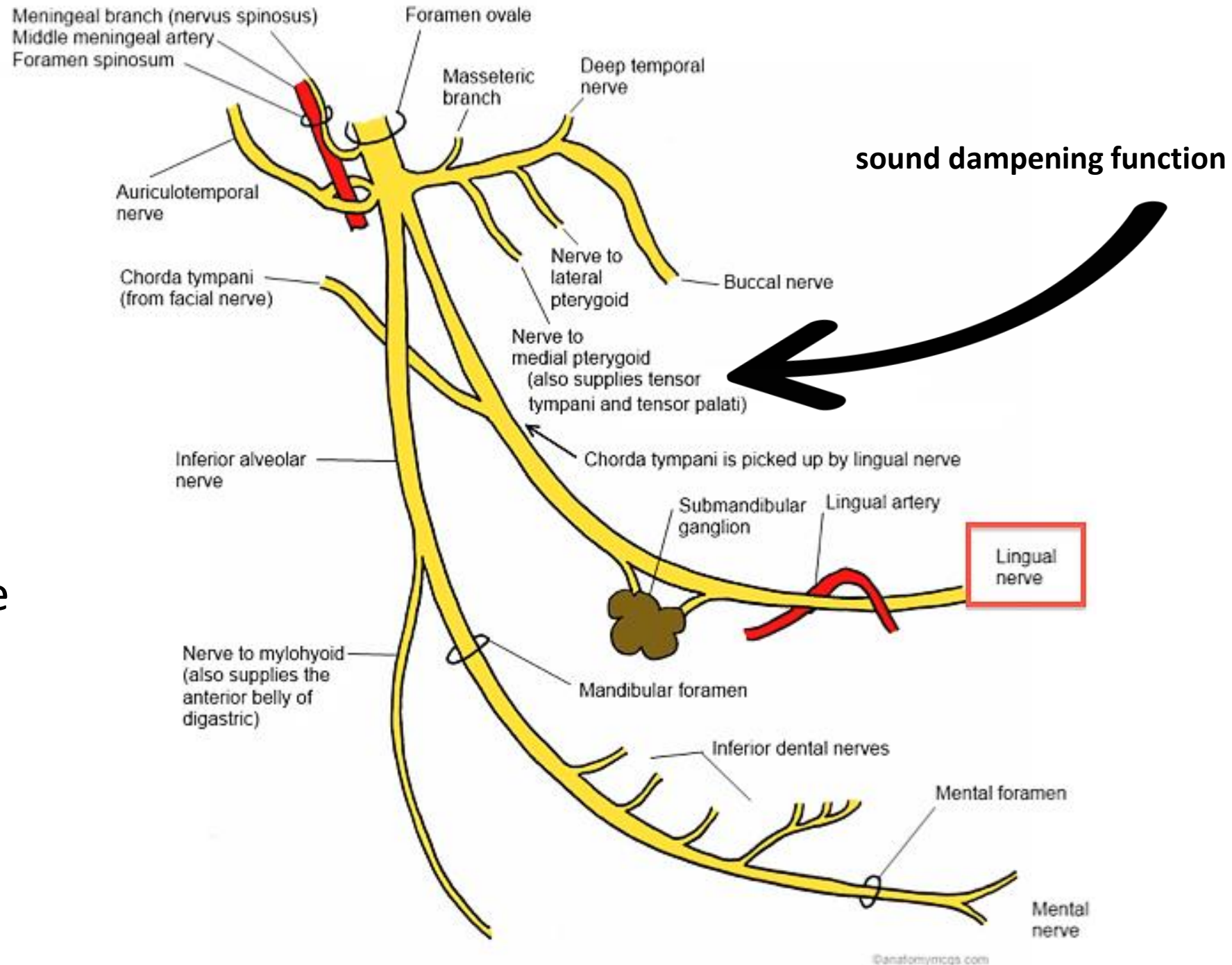
The maxillary nerve coverage

- lower eyelids,
- nares
- upper lip,
- the cheek,
- upper teeth and gums,
- roof of the pharynx along with the palate
- the air sinuses - the maxillary, ethmoid and sphenoid ones.



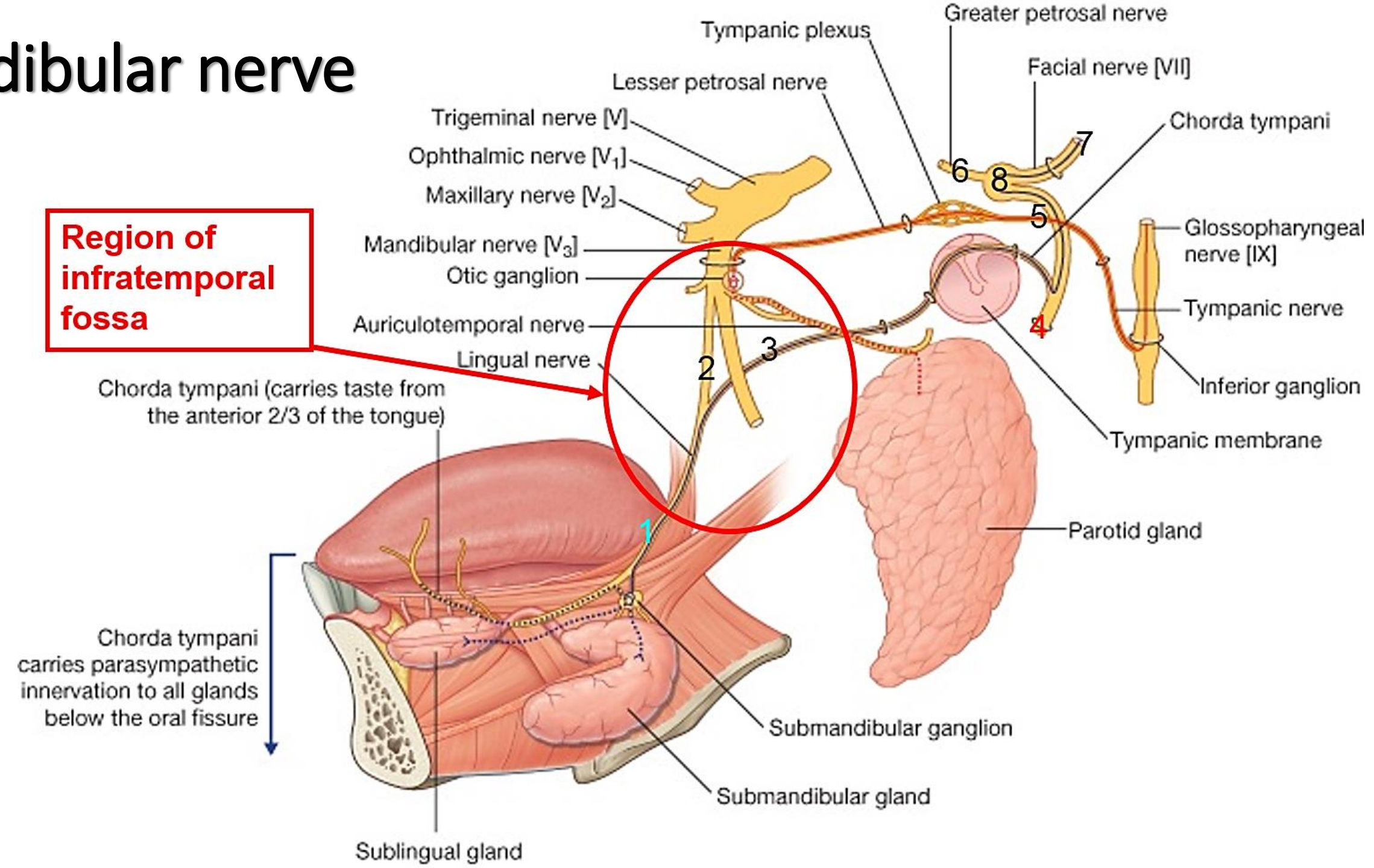
Mandibular nerve

- The motor part of the mandibular branch involved into the process of eating – biting, chewing and swallowing.

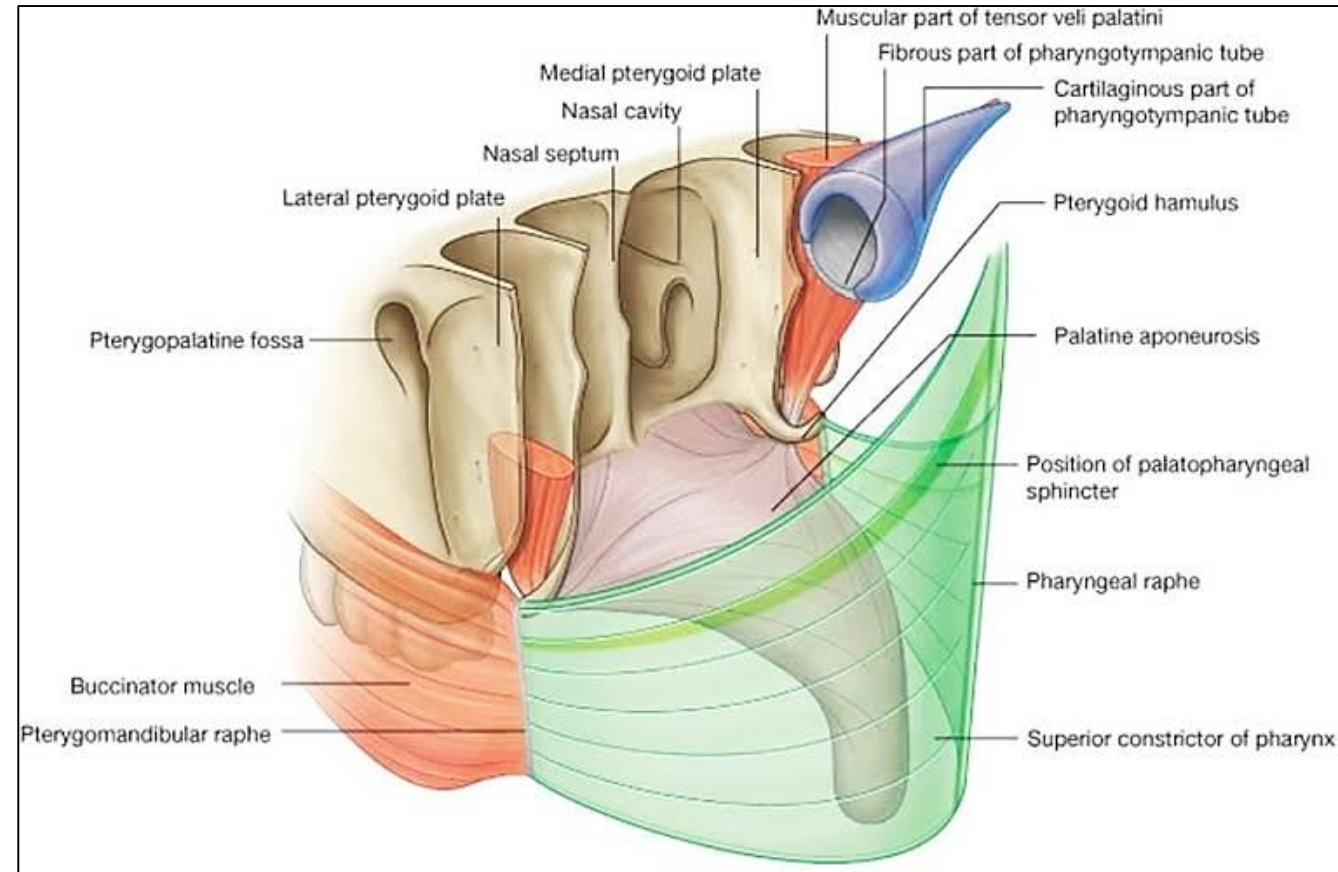
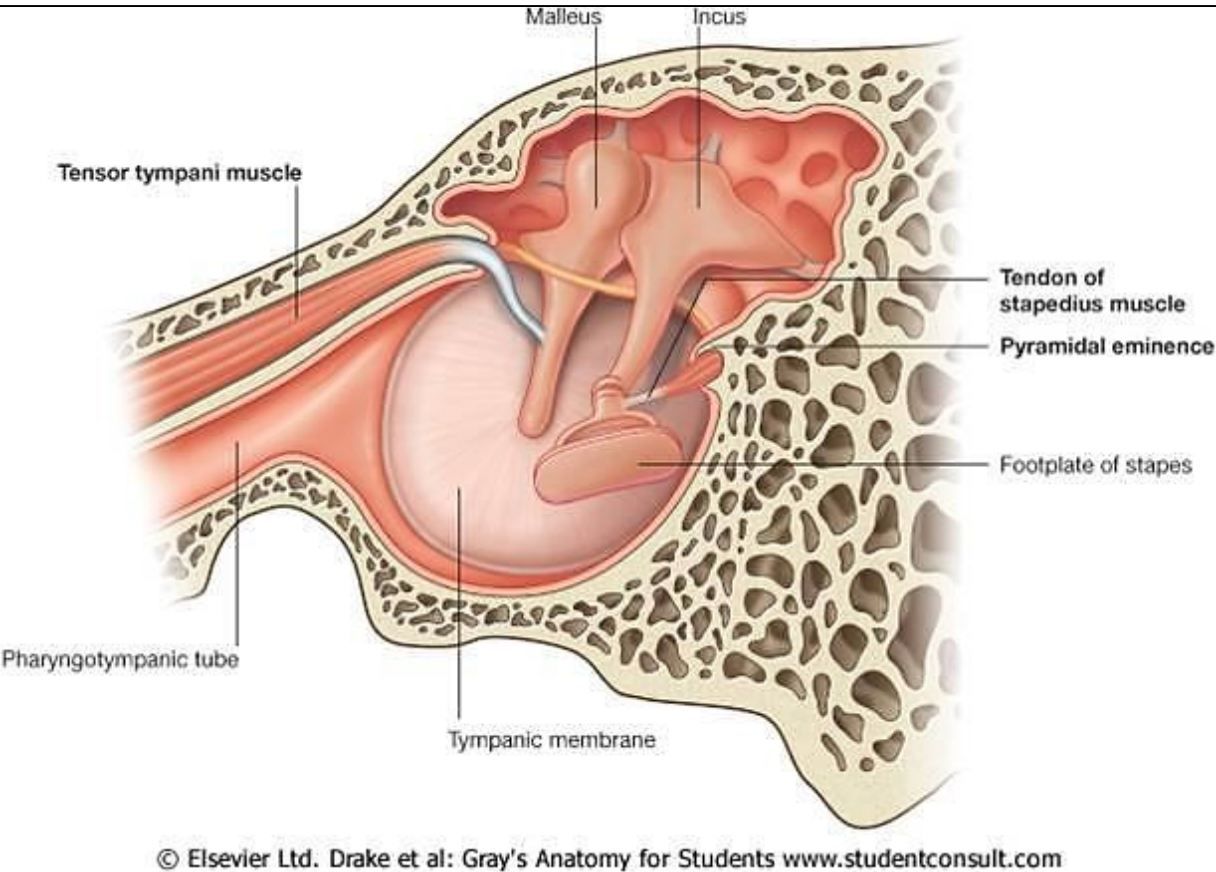


Mandibular nerve

Region of infratemporal fossa

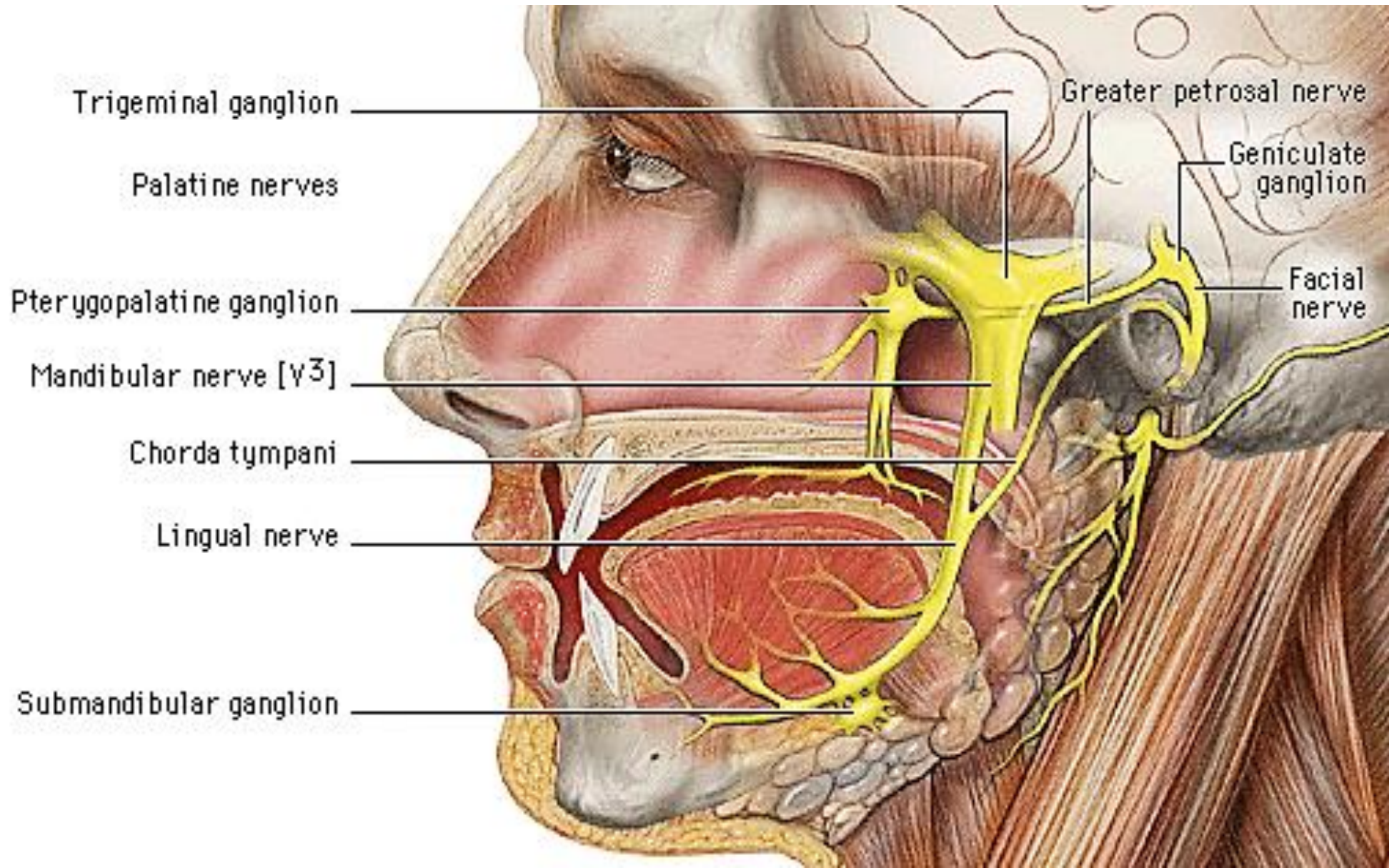


Tensors Palati & Tympani



Lingual nerve

sensory to the anterior two thirds of the tongue, the floor of the mouth, and the lingual gingivae.

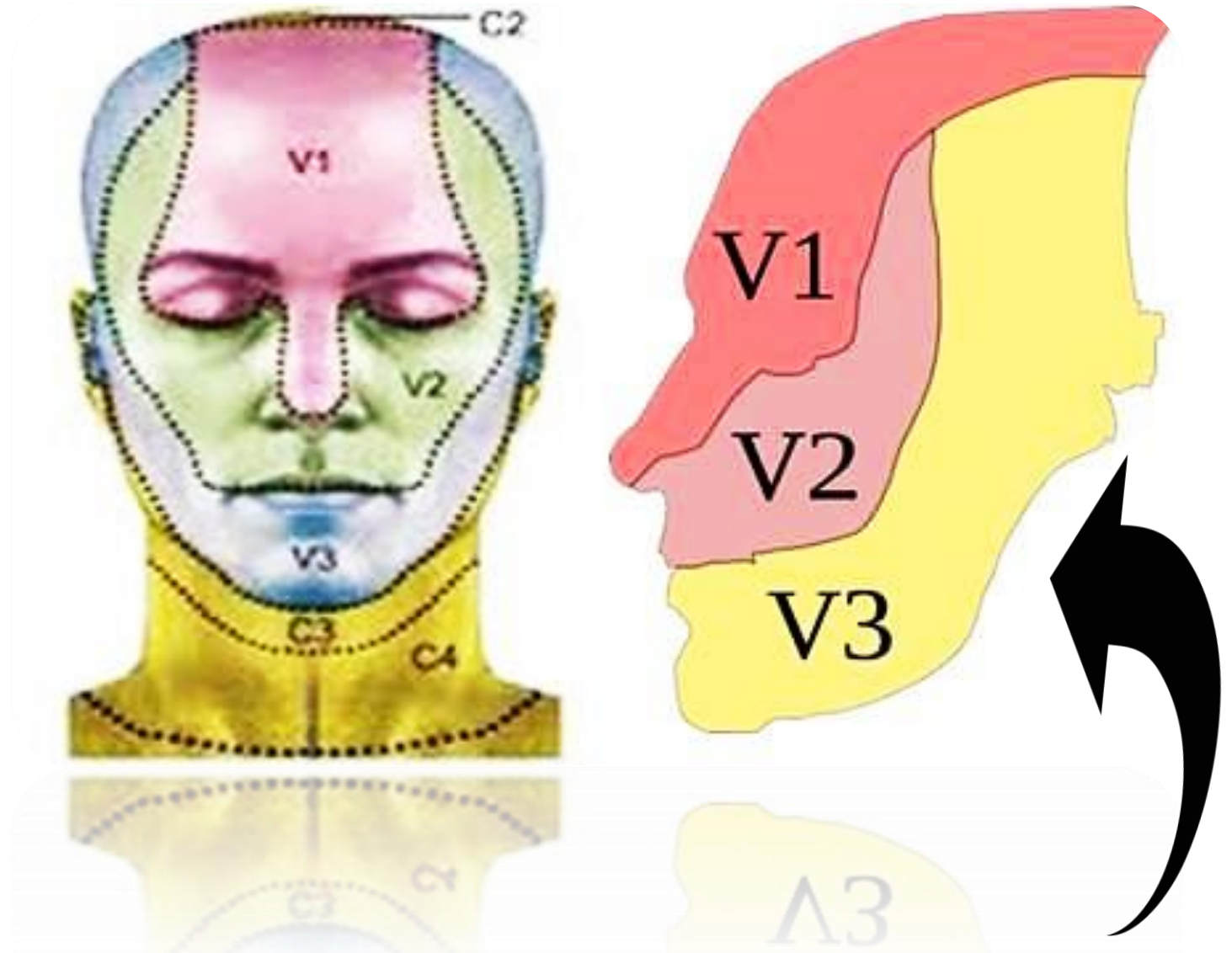


Inferior alveolar nerve



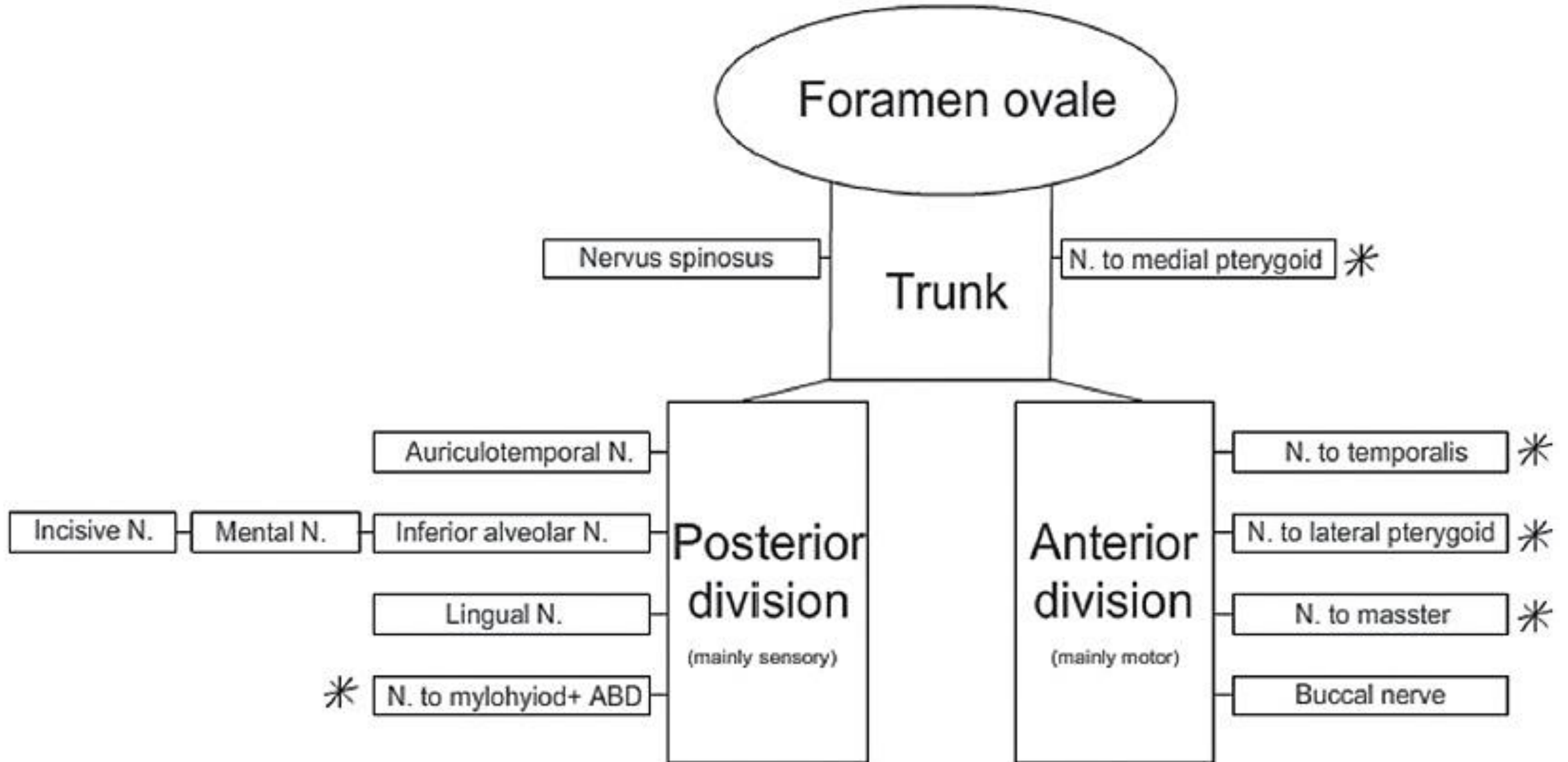
The mandibular nerve coverage

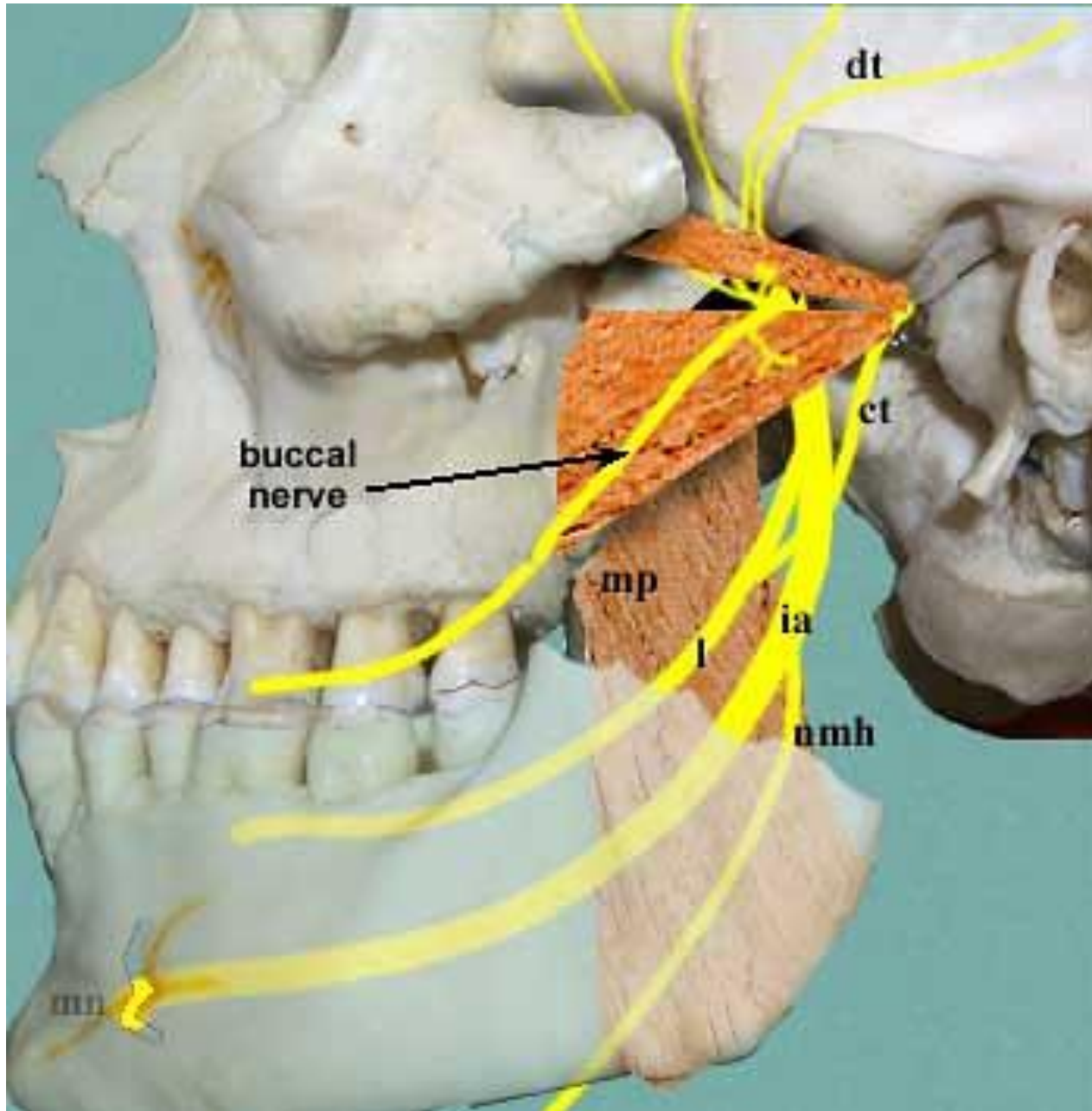
- lower lip
- lower teeth and gums,
- the chin
- the jaw
- parts of the external ear.



the angle of the jaw is innervated by the C2-C3.

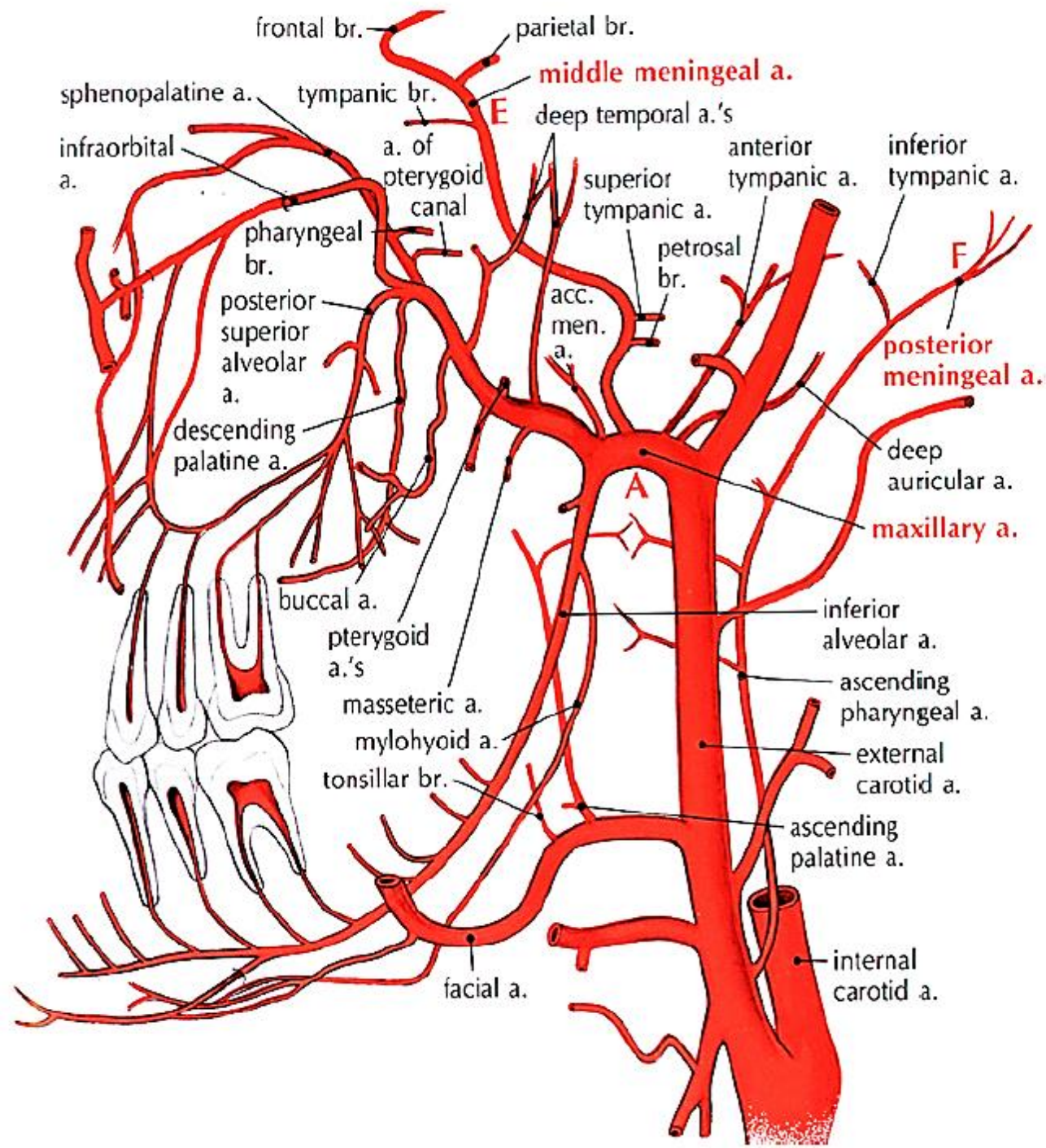
Mandibular Nerve V3





Revision

- deep temporal (dt)
- auriculotemporal (at)
- inferior alveolar (ia)
 - nerve to the mylohyoid (nmh)
- lingual (l)
- buccal (b)
- branches to lateral pterygoid (not labeled)
- Not shown: meningeal branch
- nerve to masseter



For those who really want to study the maxillary artery