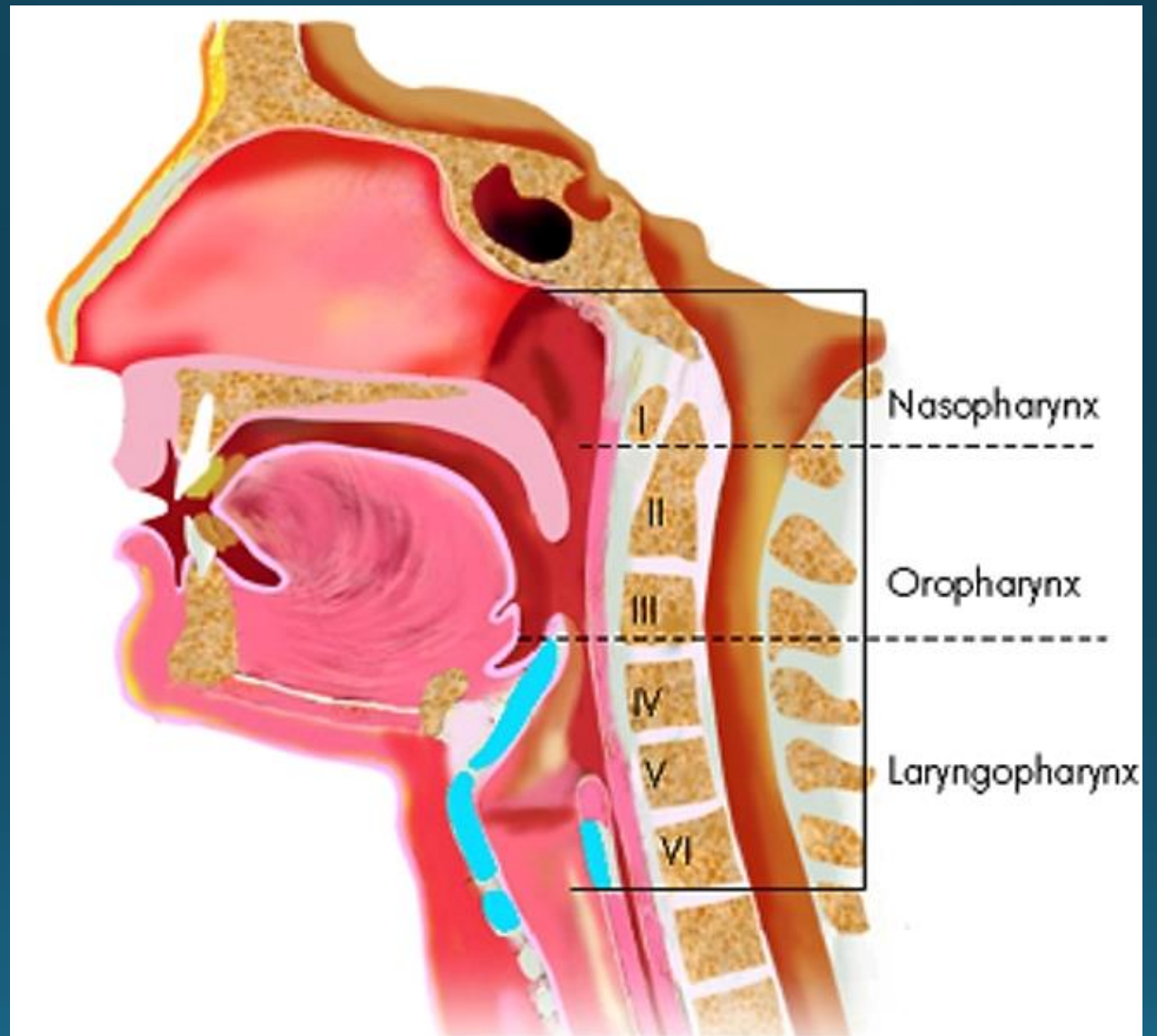


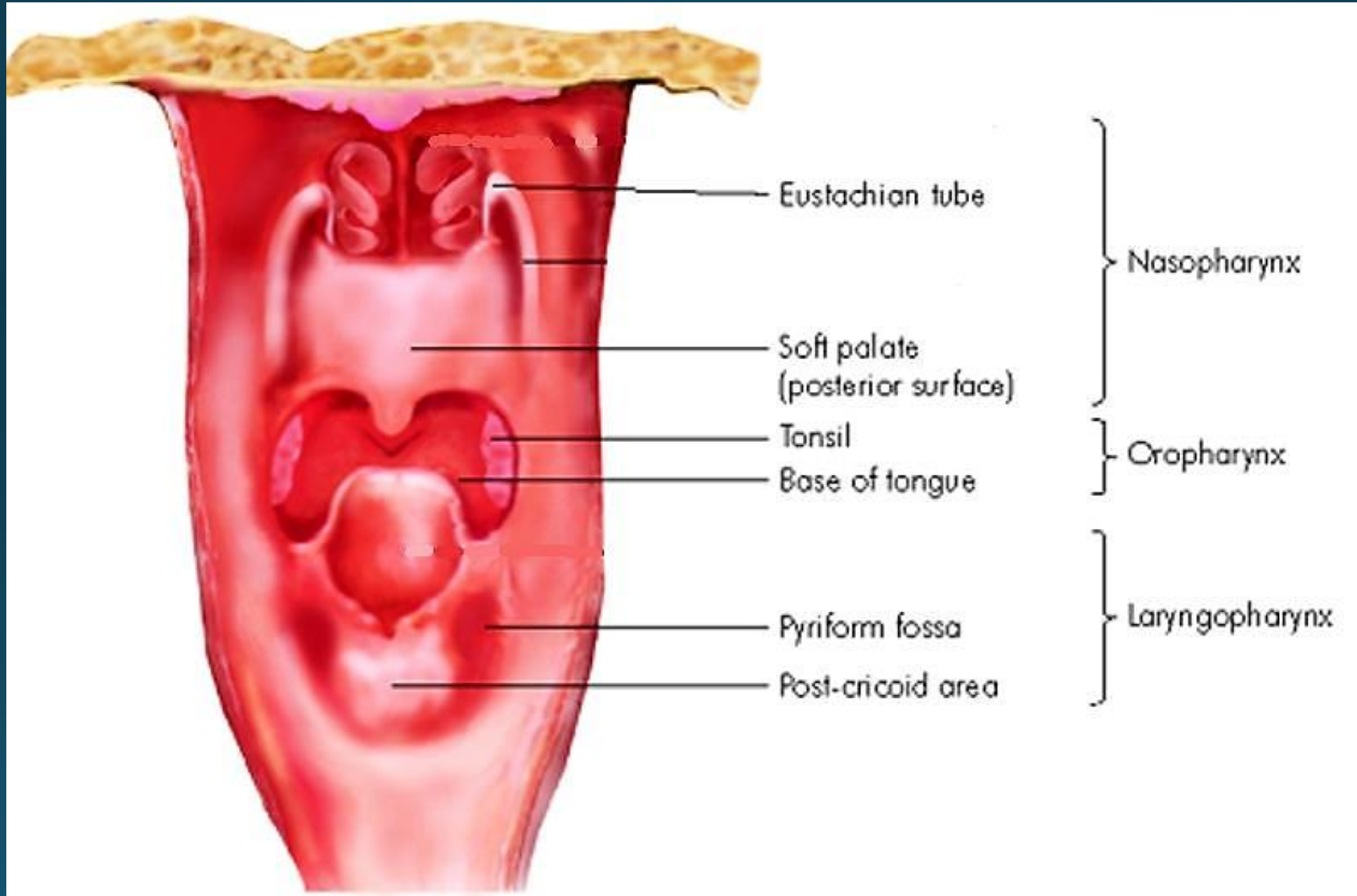
Pharynx Anatomy

Dr Maan Al-Abbasi

Divisions



Anterior Relations



Lower Limit of

Nasopharynx

Lower border of soft palate or
Junction b/w hard & soft palate

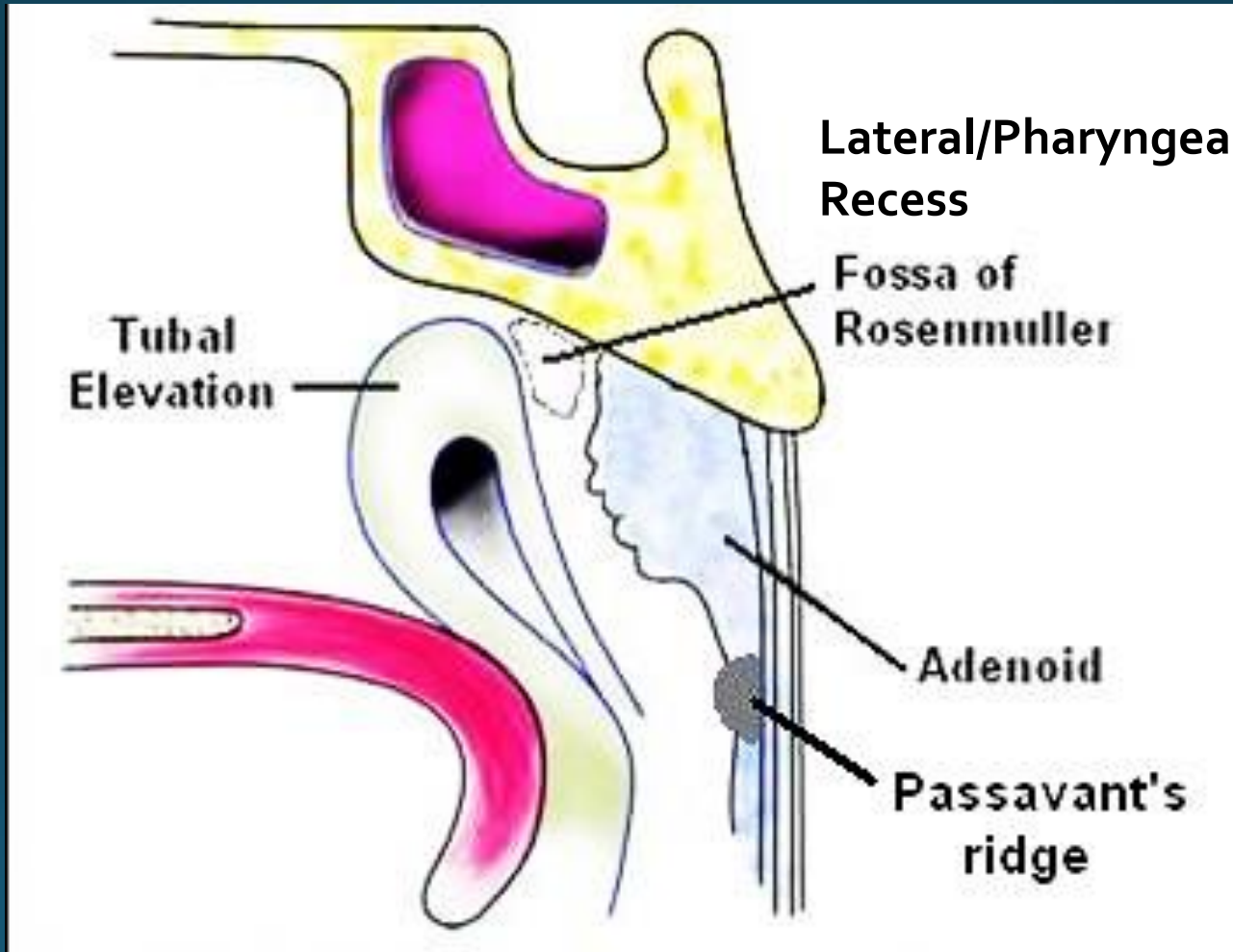
Oropharynx

Tip of epiglottis or
Body of hyoid bone or
Base of vallecula

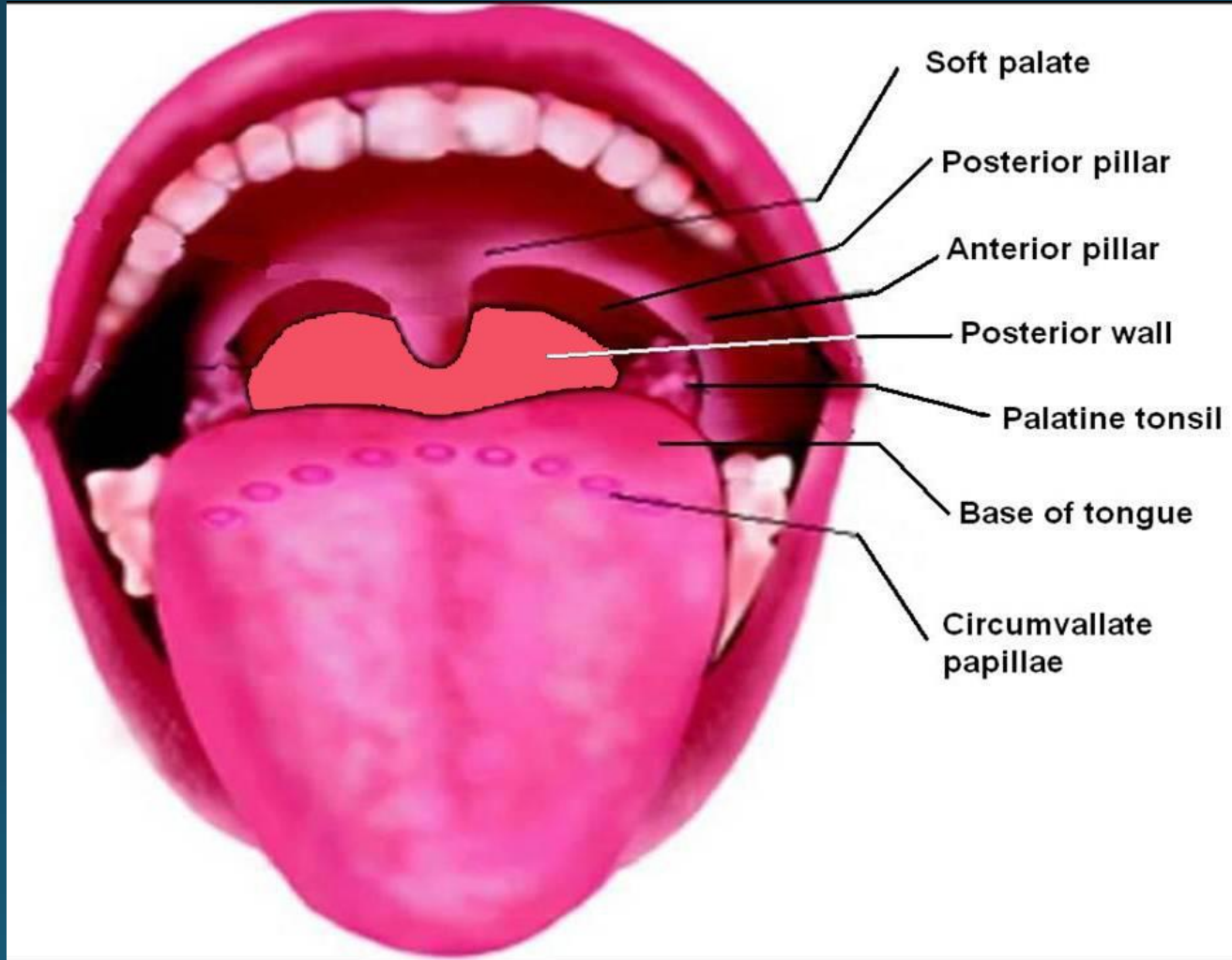
Hypopharynx

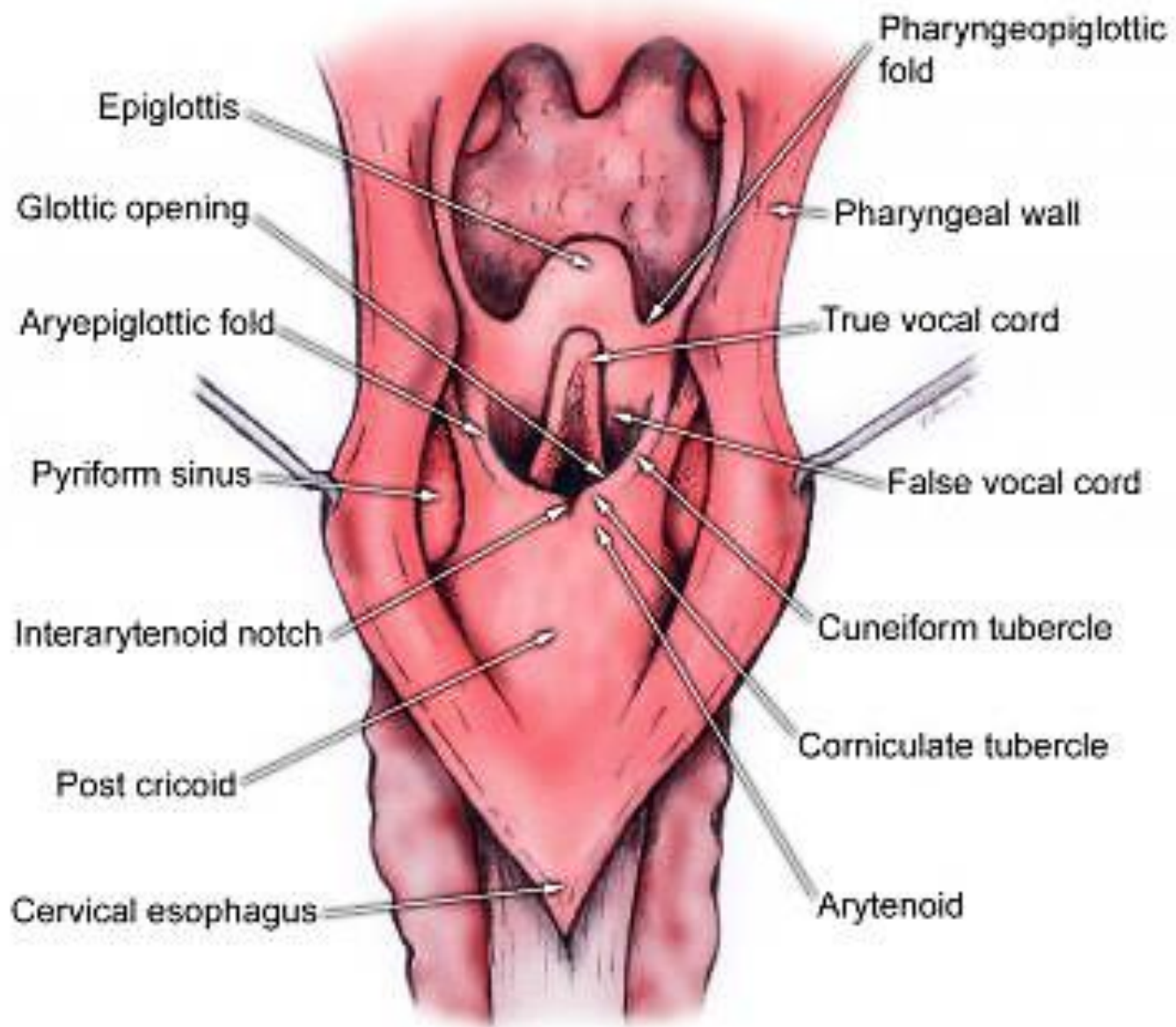
Lower border of cricoid or
Lower border of C6 vertebra

Nasopharynx & Nasopharyngeal Isthmus



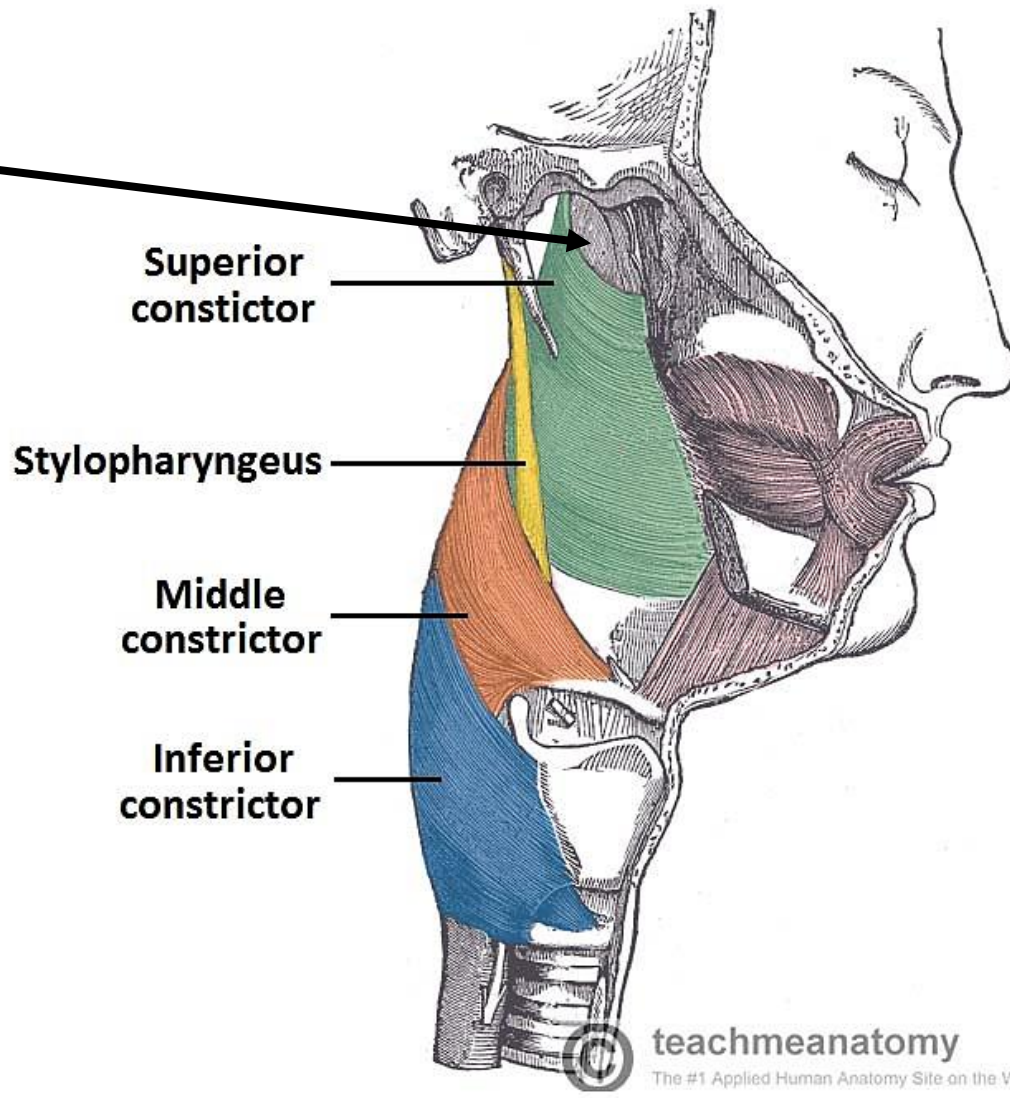
Parts of Oropharynx & Oropharyngeal Isthmus





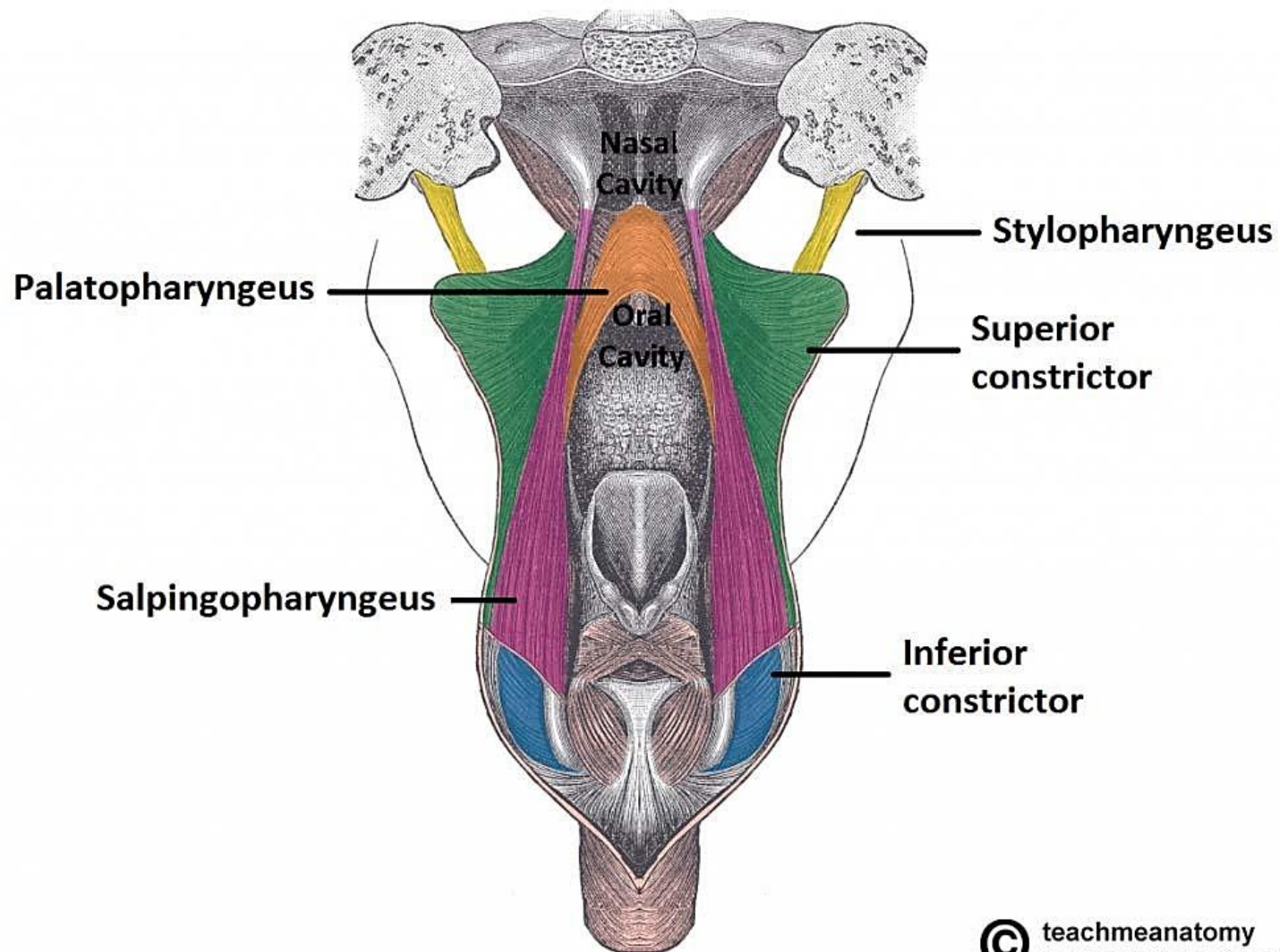
Muscles of Pharynx

Pharyngo-
basilar fascia

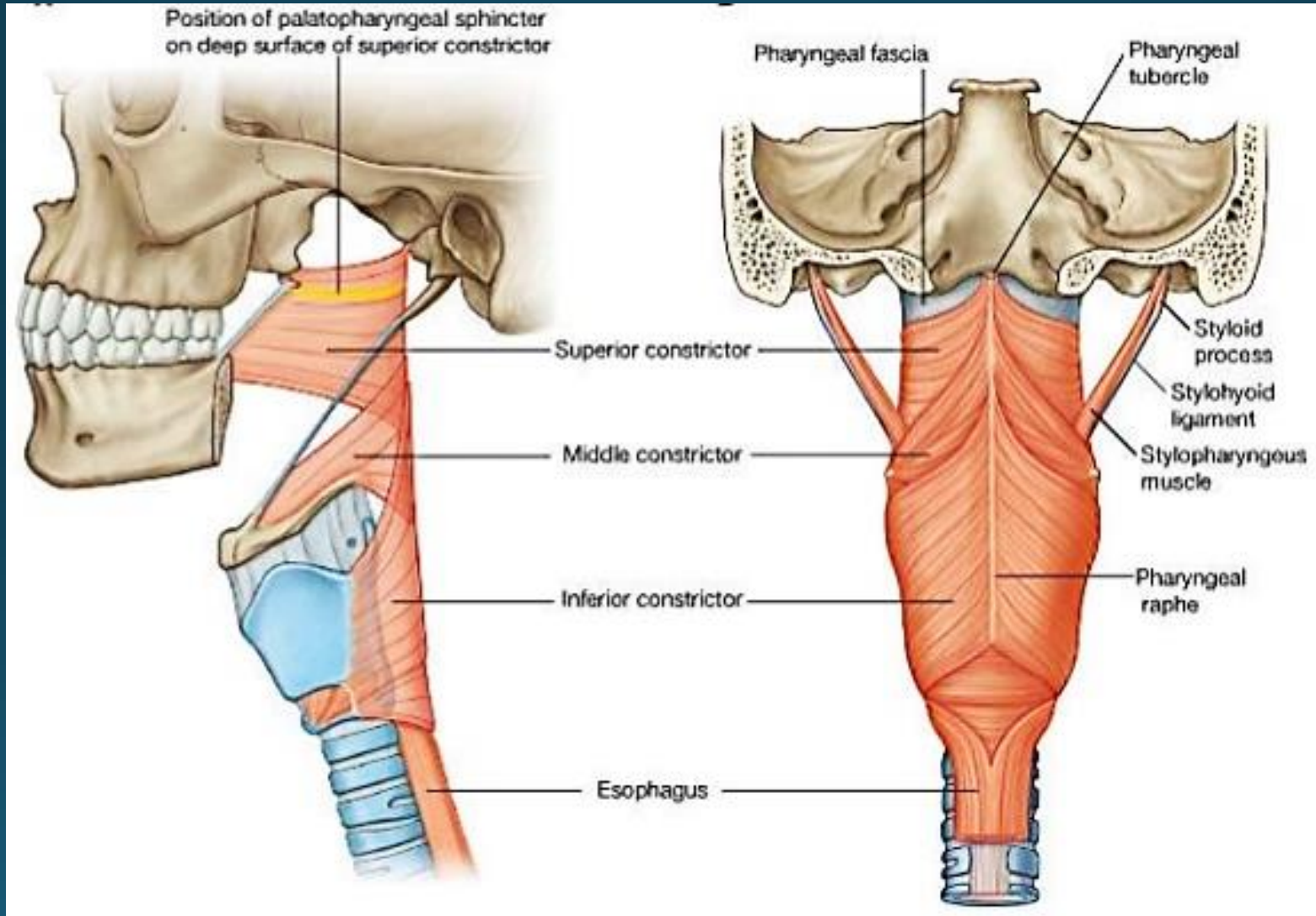


All covered by
Bucco-
pharyngeal
fascia

Muscles of Pharynx



Muscles of Pharynx



Structures Passing

Between Skull Base & Superior Constrictor (Sinus of Morgagni)

Eustachian tube + Levator palatini + Tensor palatini + Ascending palatine artery + palatine branch of ascending pharyngeal art.

Between Superior & Middle Constrictors

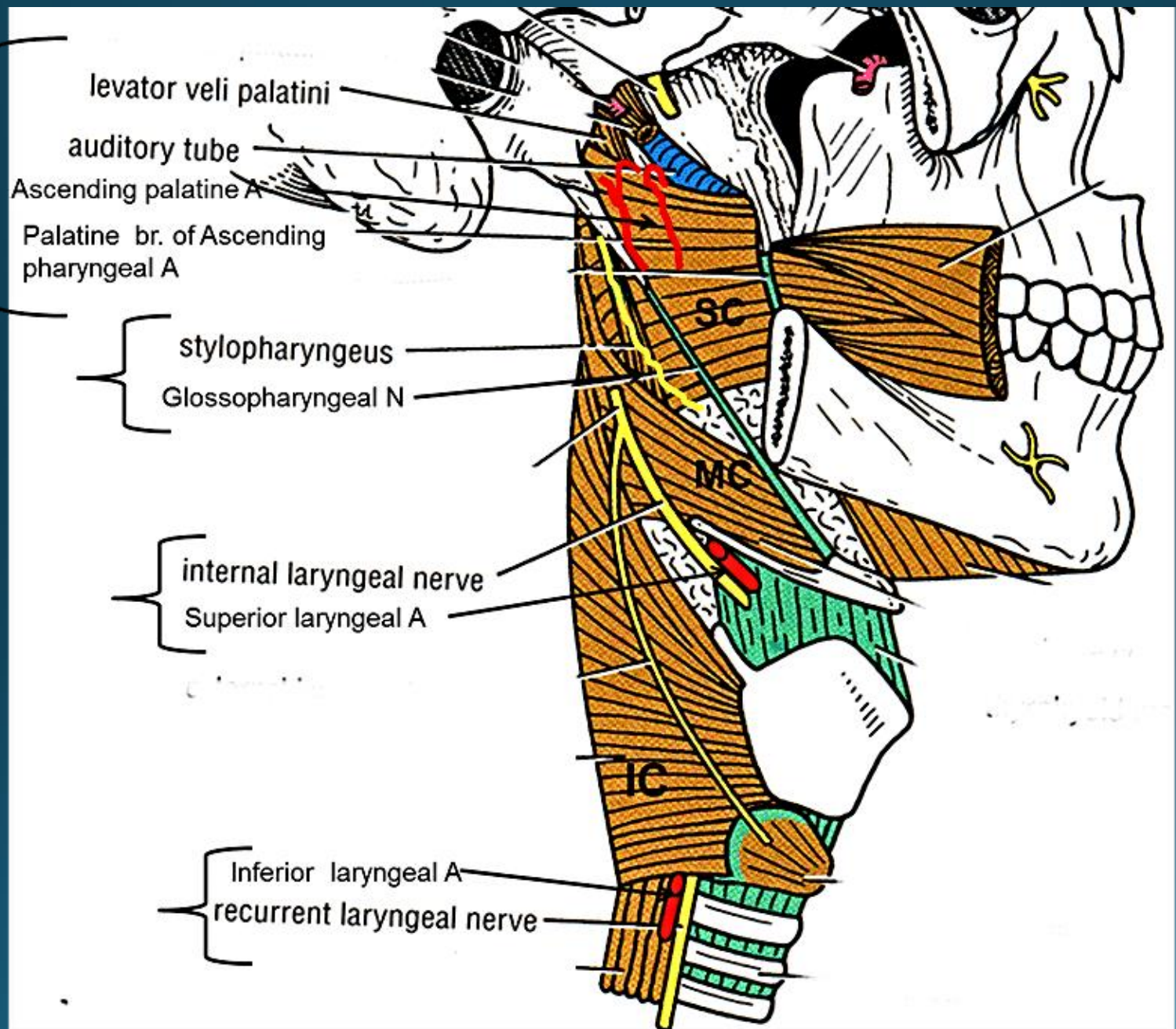
Glossopharyngeal nerve & Stylopharyngeus muscle

Between Middle & Inferior Constrictors

Internal Laryngeal nerve & Superior Laryngeal artery

Below Inferior Constrictor

Recurrent Laryngeal nerve & Inferior Laryngeal artery



levator veli palatini

auditory tube

Ascending palatine A

Palatine br. of Ascending pharyngeal A

stylopharyngeus

Glossopharyngeal N

internal laryngeal nerve

Superior laryngeal A

Inferior laryngeal A

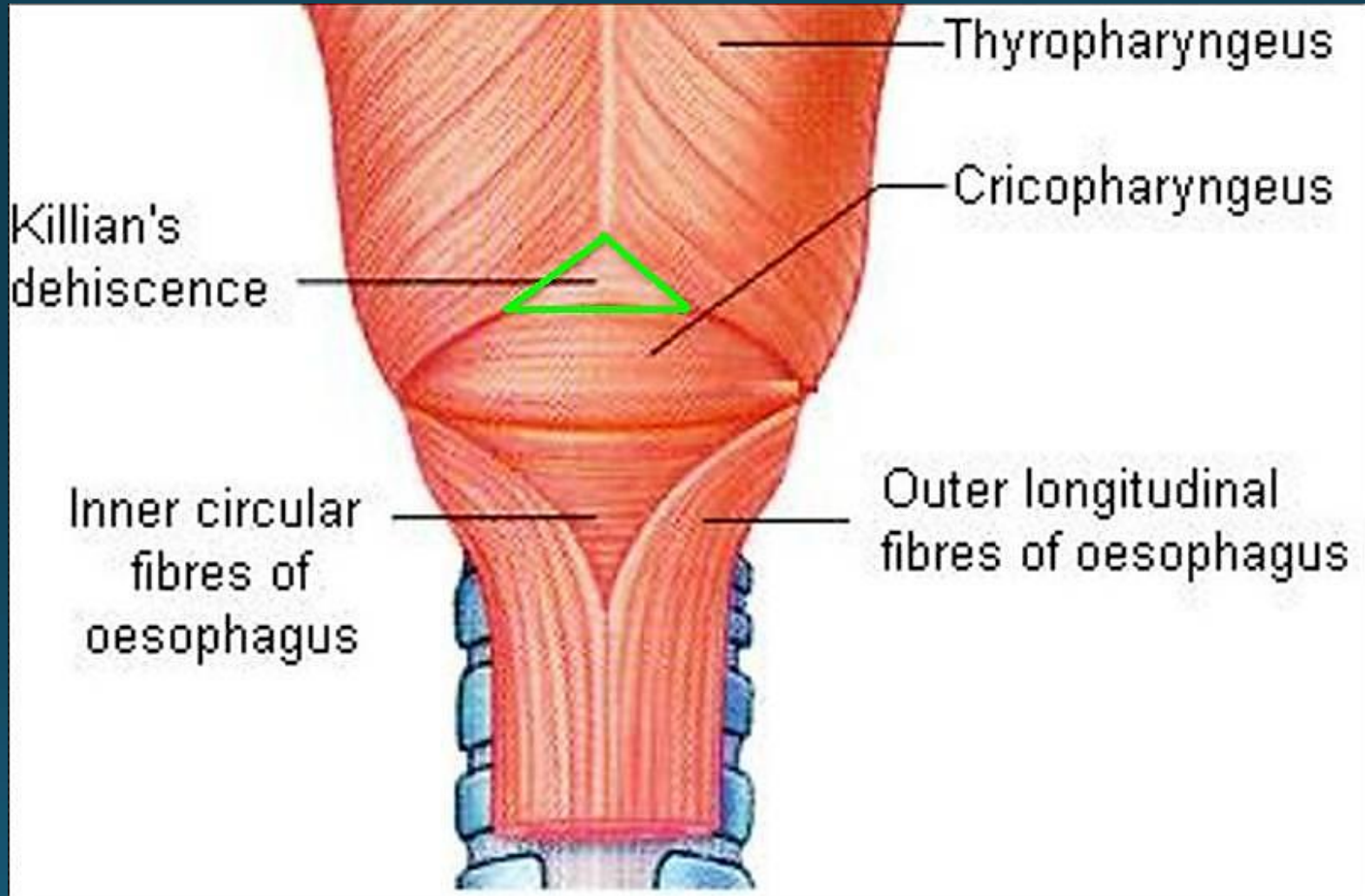
recurrent laryngeal nerve

SC

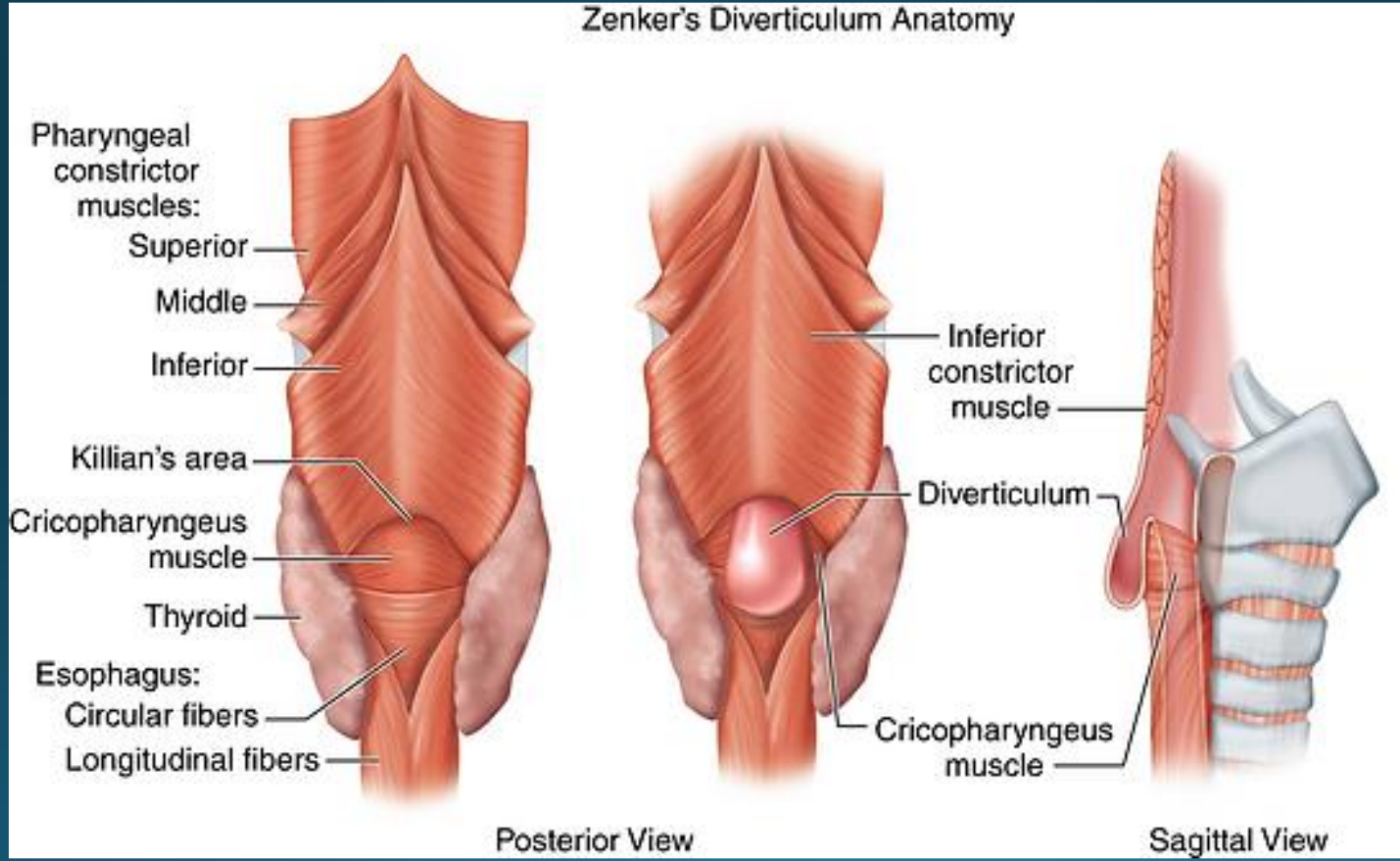
MC

IC

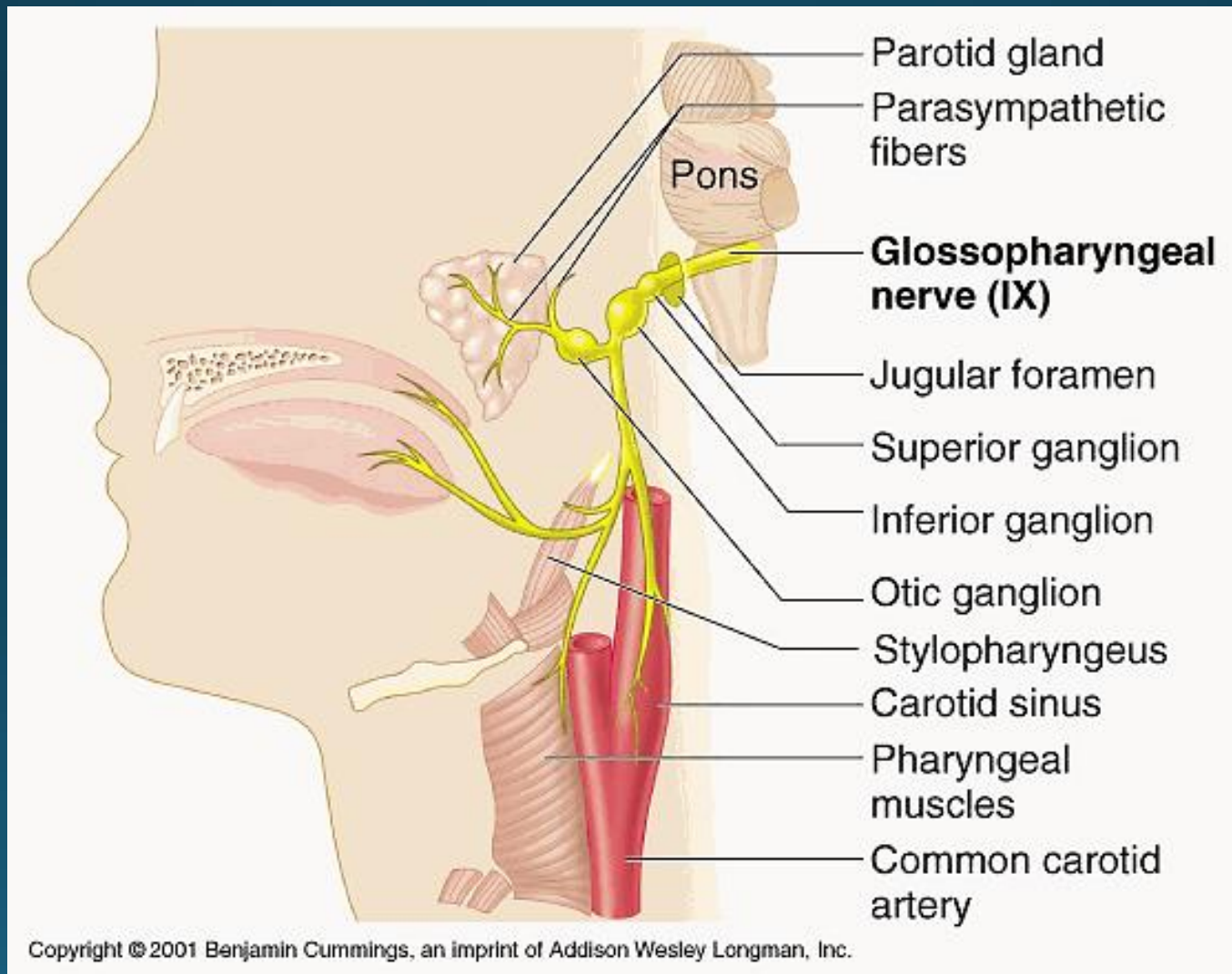
Killian's Dehiscence



Mucosa herniates through it to form hypopharyngeal pouch (Zenker's diverticulum)



CN IX



Nerve Supply

- **Nasopharynx:** pterygo-palatine ganglion (V₂)
- **Oropharynx:** glossopharyngeal & vagus nv
- **Hypopharynx:** Superior & recurrent laryngeal nv
- **All muscles by pharyngeal nerve plexus (vagus nv carrying cranial part of accessory nv) except stylopharyngeus (glossopharyngeal nv) & cricopharyngeus (also by recurrent laryngeal)**

Venous Drainage

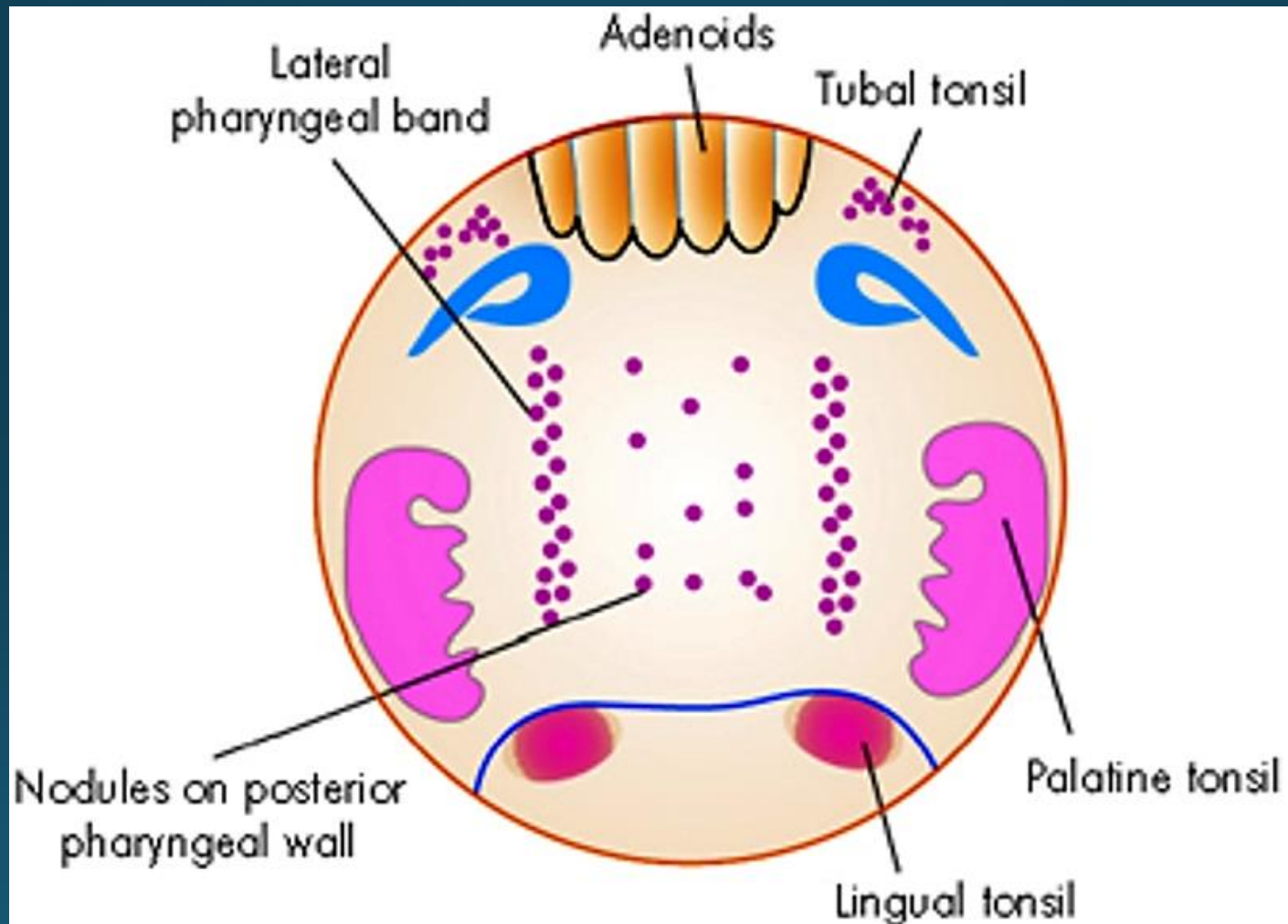
Upper pharynx:

- Pharyngeal venous plexus situated on middle constrictor → pterygoid venous plexus & internal jugular vein

Lower pharynx:

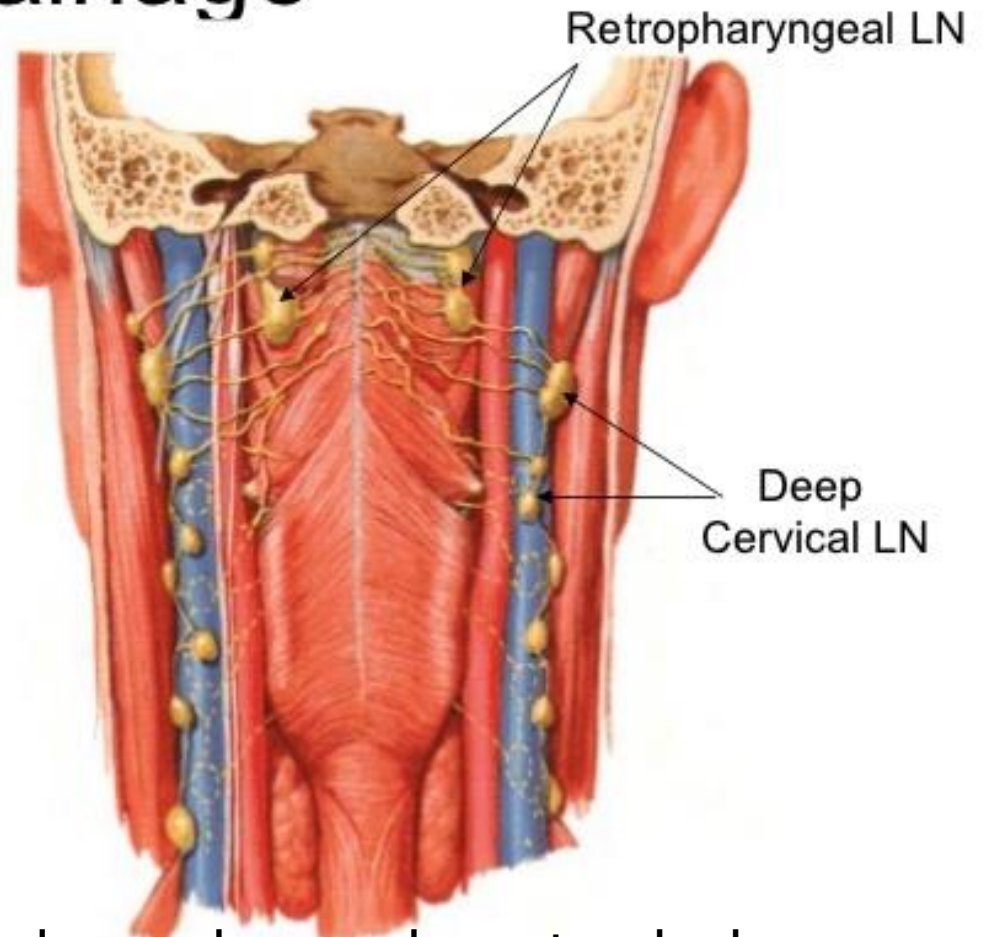
- Inferior thyroid veins

Waldeyer's Tonsillar Ring



Lymphatic drainage

- To the retropharyngeal LN and then to deep cervical LN
- Directly to the deep cervical LN



upper deep cervical + retropharyngeal + parapharyngeal , paratreacheal - supraclavicular

RULES OF NERVE SUPPLY FOR MUSCLE GROUPS

ALL MUSCLES OF	SUPPLIED BY	EXCEPT	WHICH IS SUPPLIED BY
PHARYNX	Pharyngeal plexus (IX, X & sympathetic)	Stylopharyngeus	Glossopharyngeal (IX)
PALATE	Pharyngeal plexus (IX, X & sympathetic)	Tensor veli palatini	Nerve to medial pterygoid (Vc)
TONGUE	Hypoglossal (XII)	Palatoglossus	Pharyngeal plexus (IX, X & sympathetic)
FACIAL EXPRESSION & BUCCINATOR	Facial (VII)	Levator palpebrae superioris	Oculomotor (III)
MASTICATION	Mandibular division of Trigeminal (Vc)	Buccinator	Facial (VII)
LARYNX	Recurrent laryngeal	Cricothyroid	External branch of superior laryngeal nerve (X)

Arterial Supply

- Facial artery
- Lingual artery
- Ascending pharyngeal artery
- Ascending palatine artery
- Greater palatine artery
- Artery of pterygoid canal
- Superior laryngeal artery

