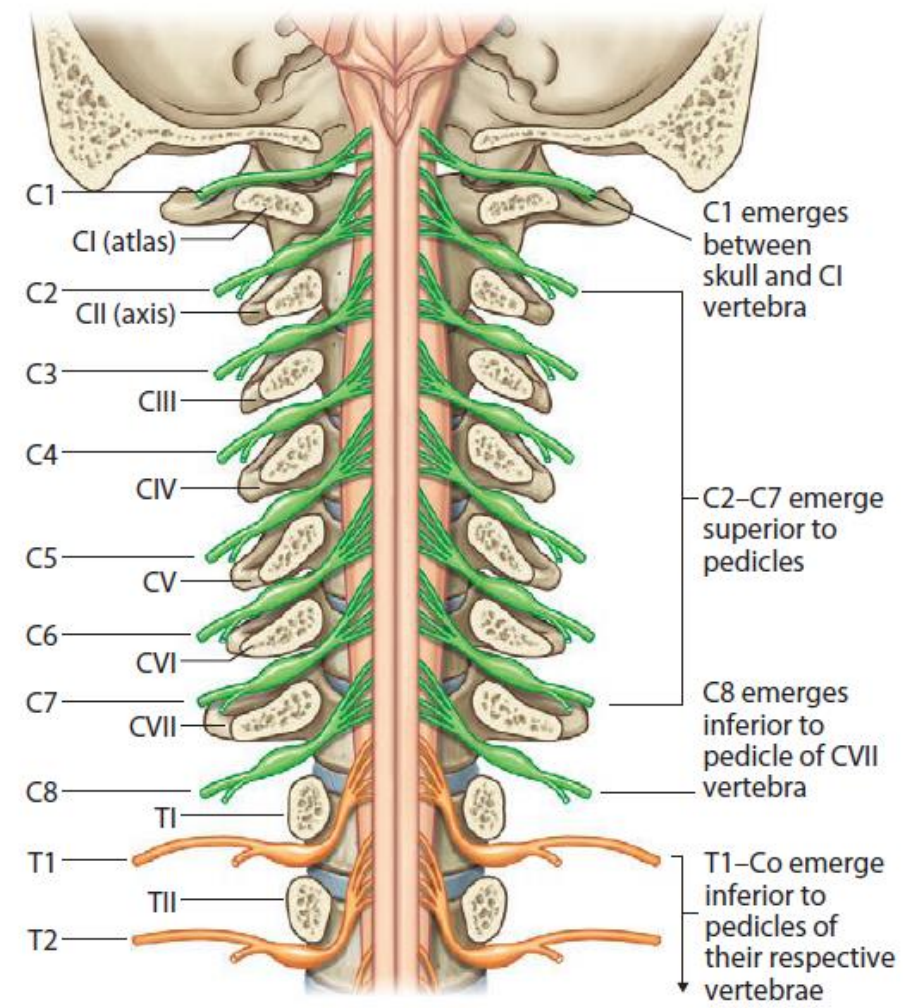
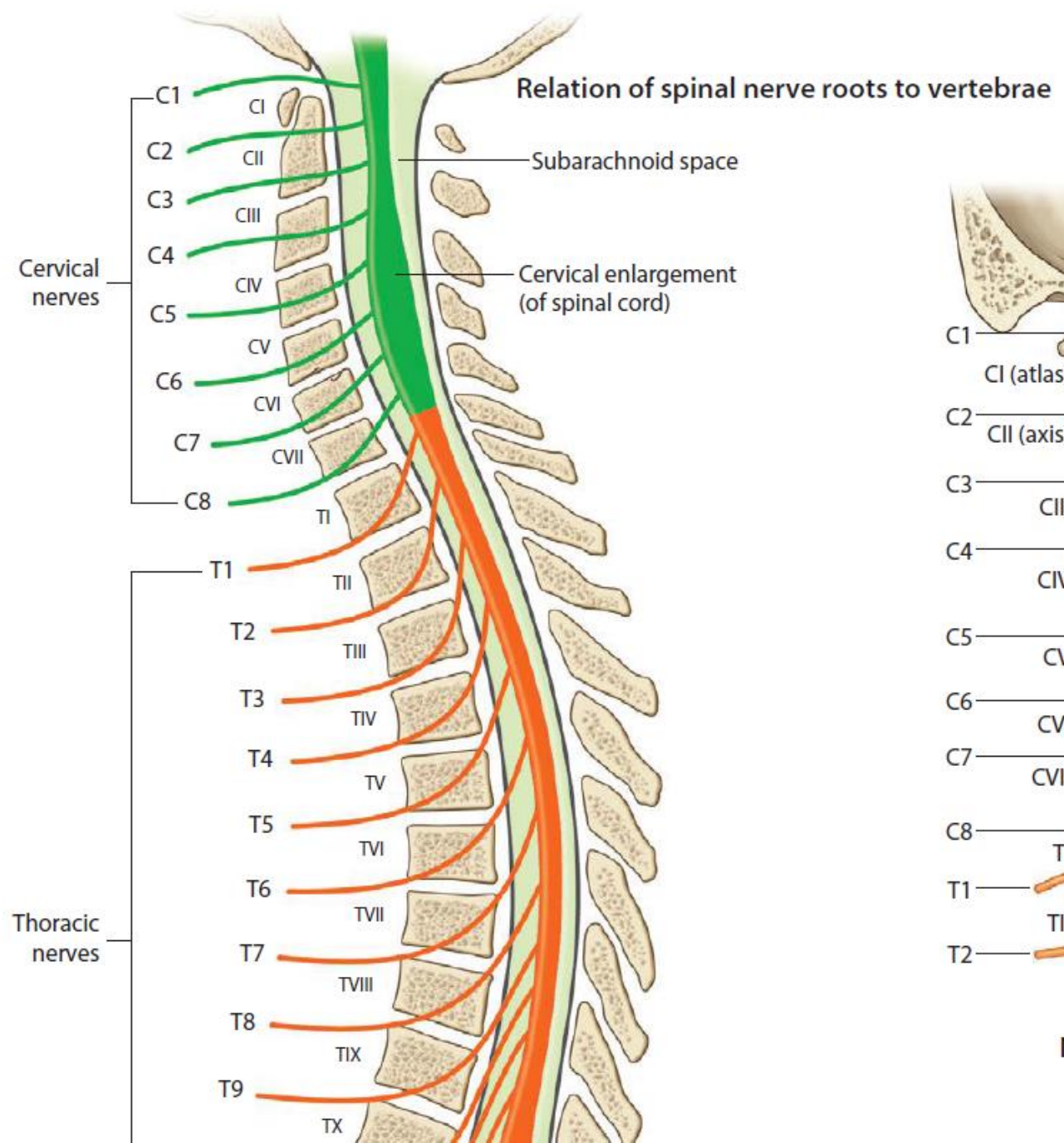
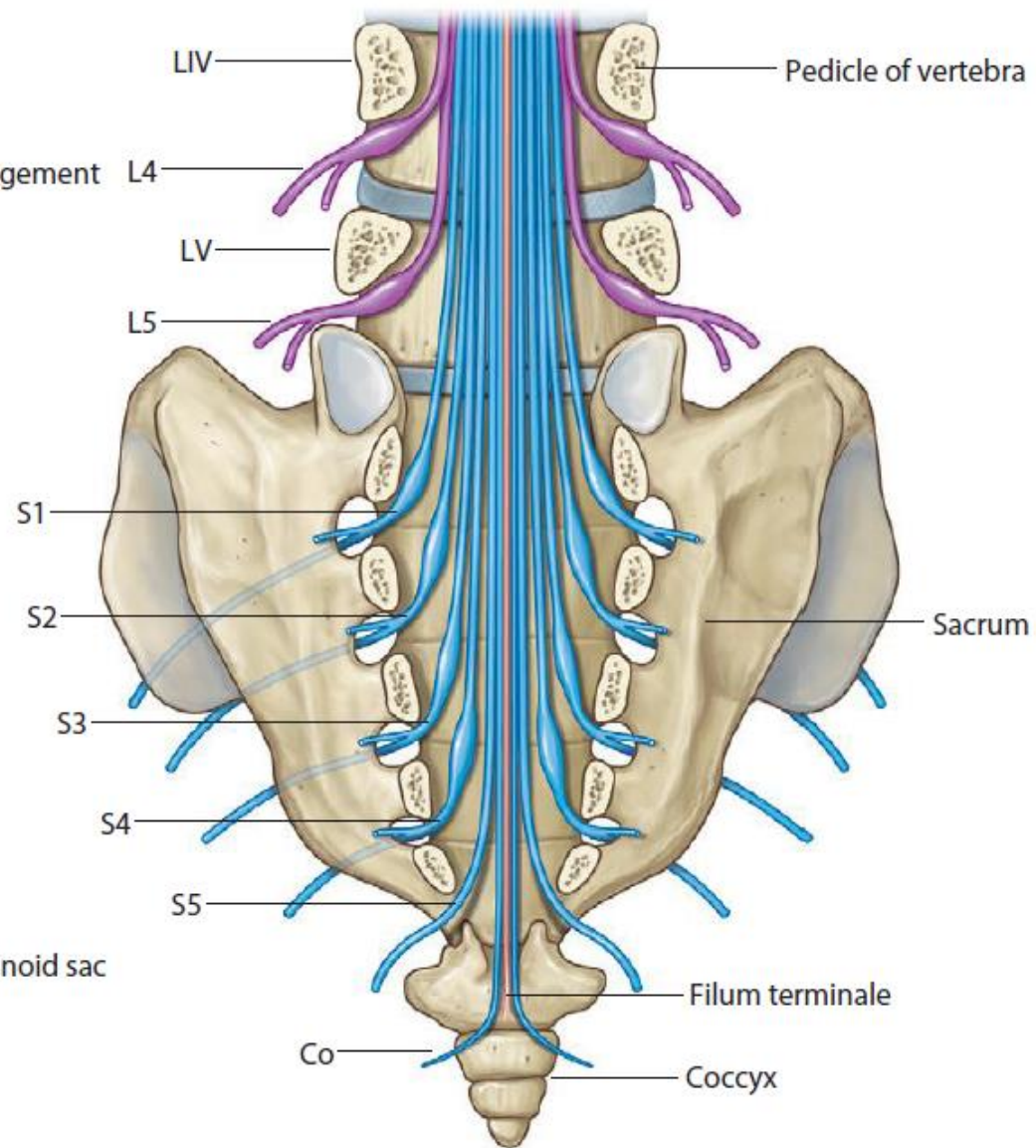
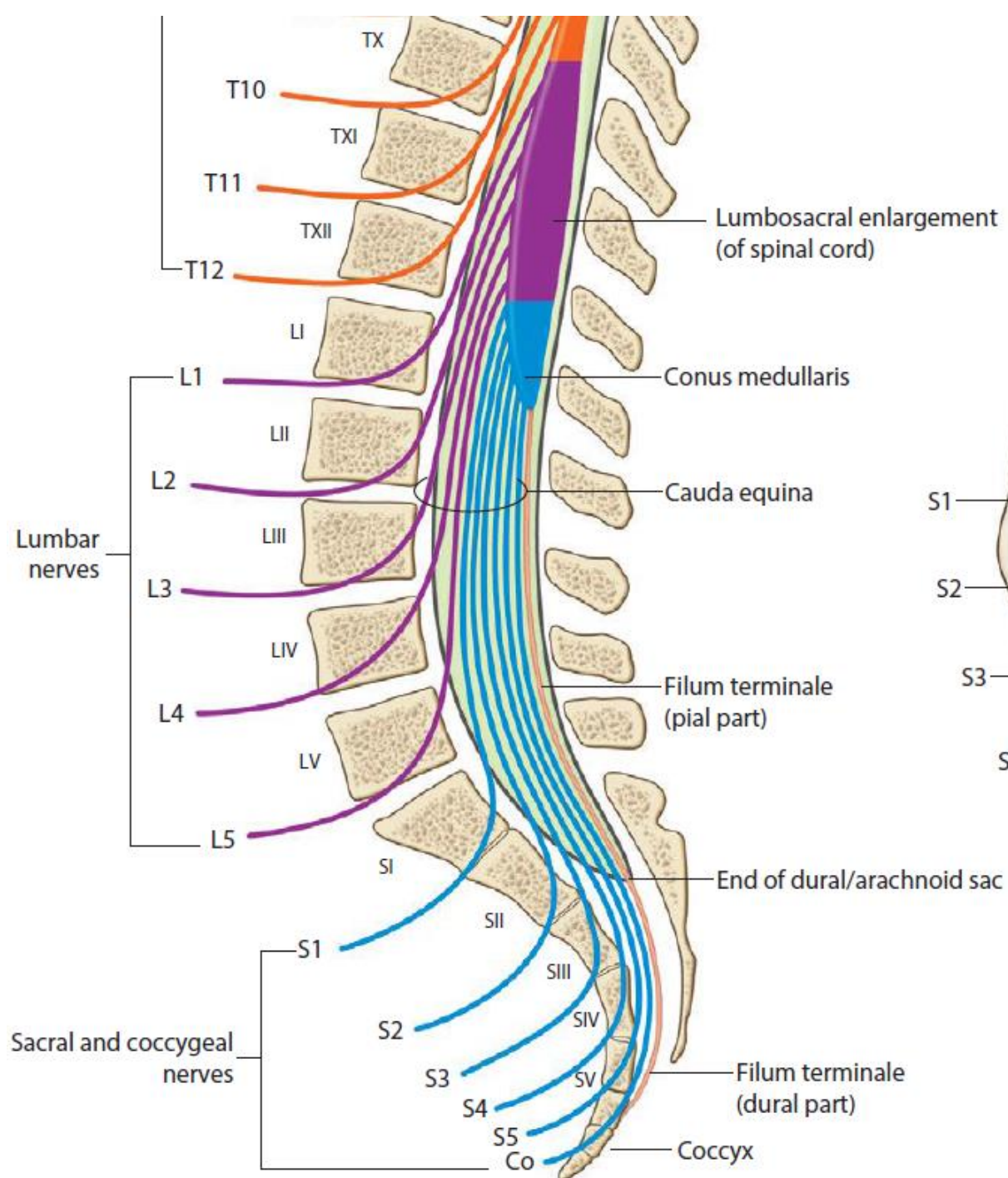
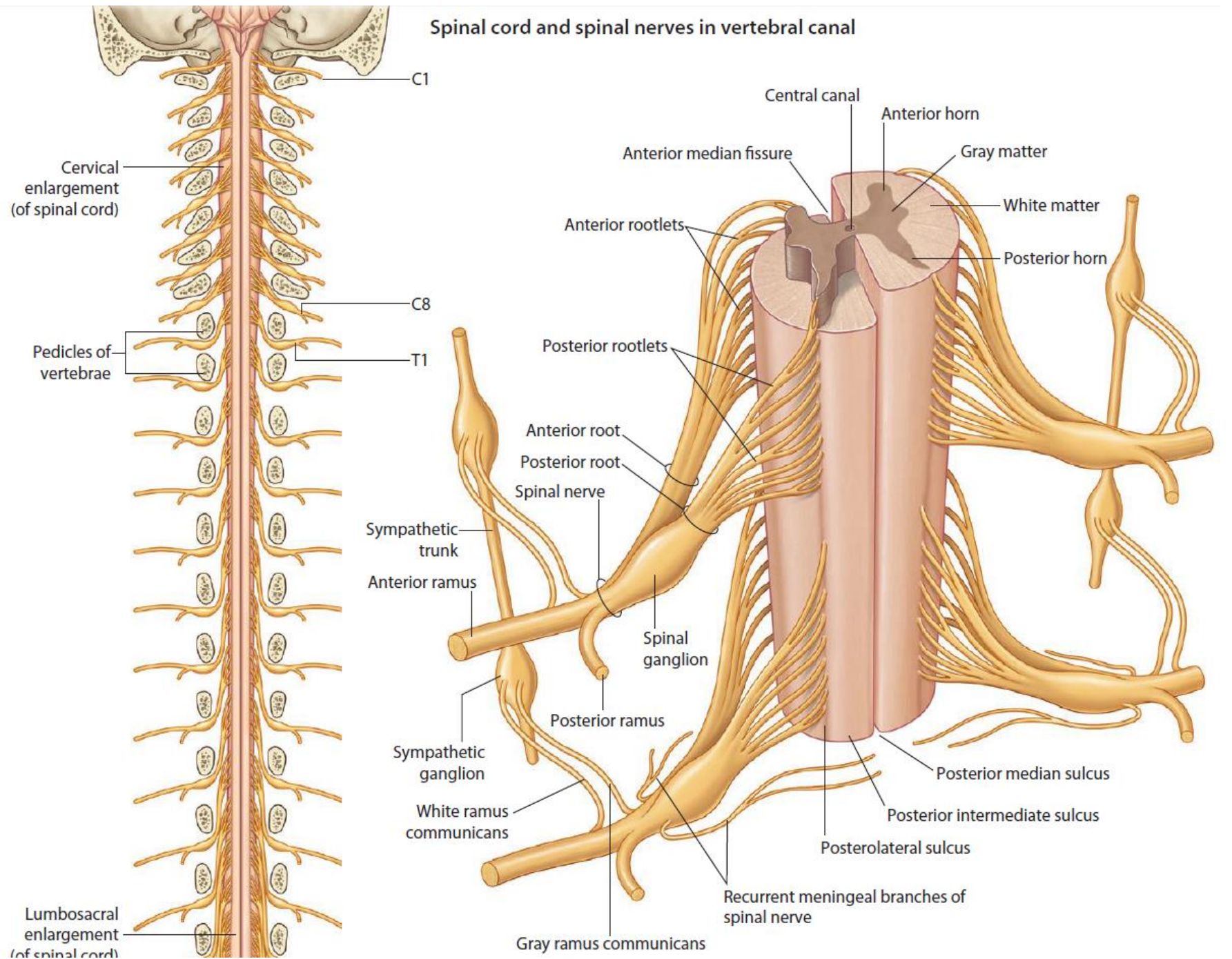


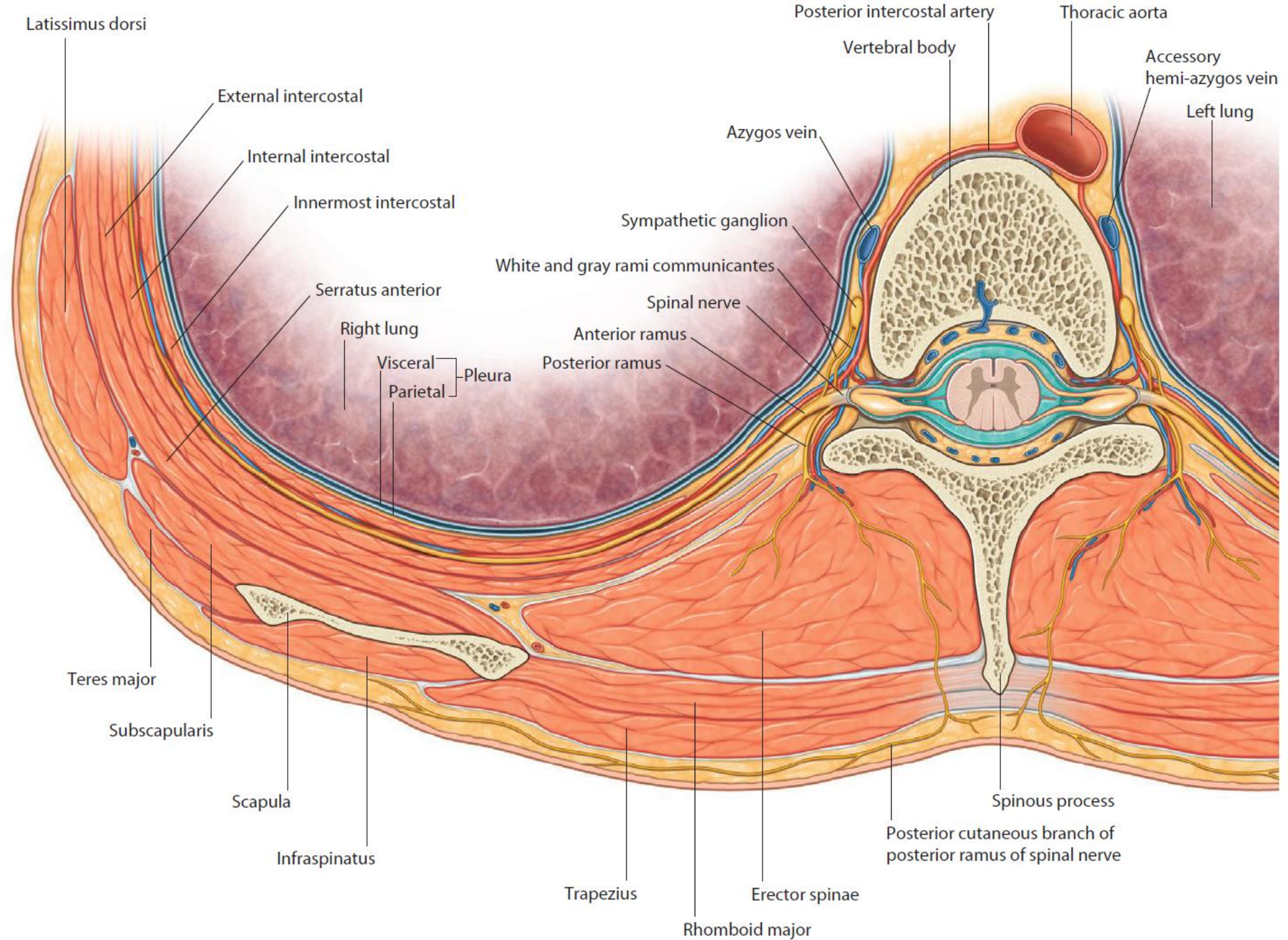
Images of the Back, lecture 3

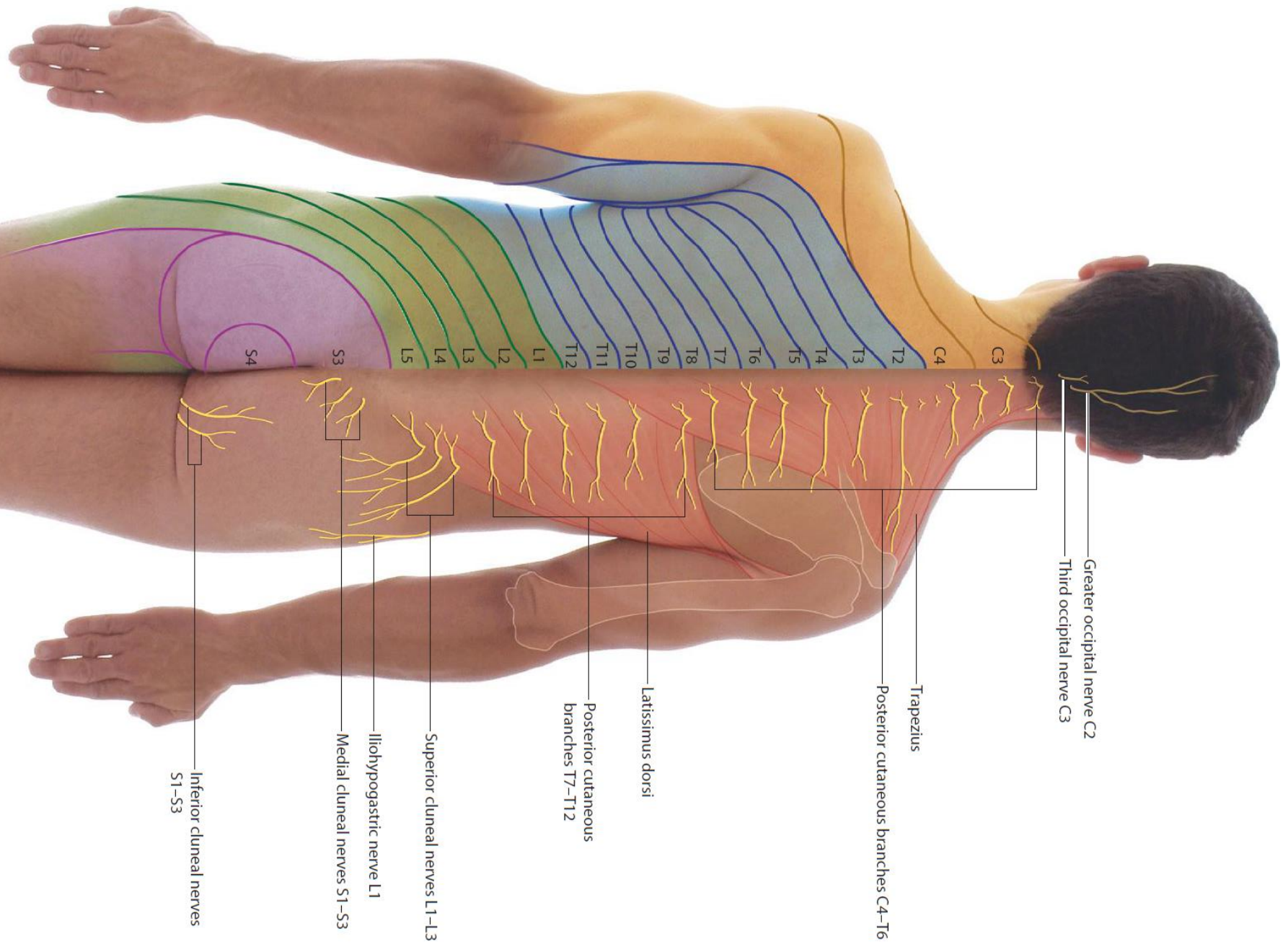
Dr. Ali Mohsin

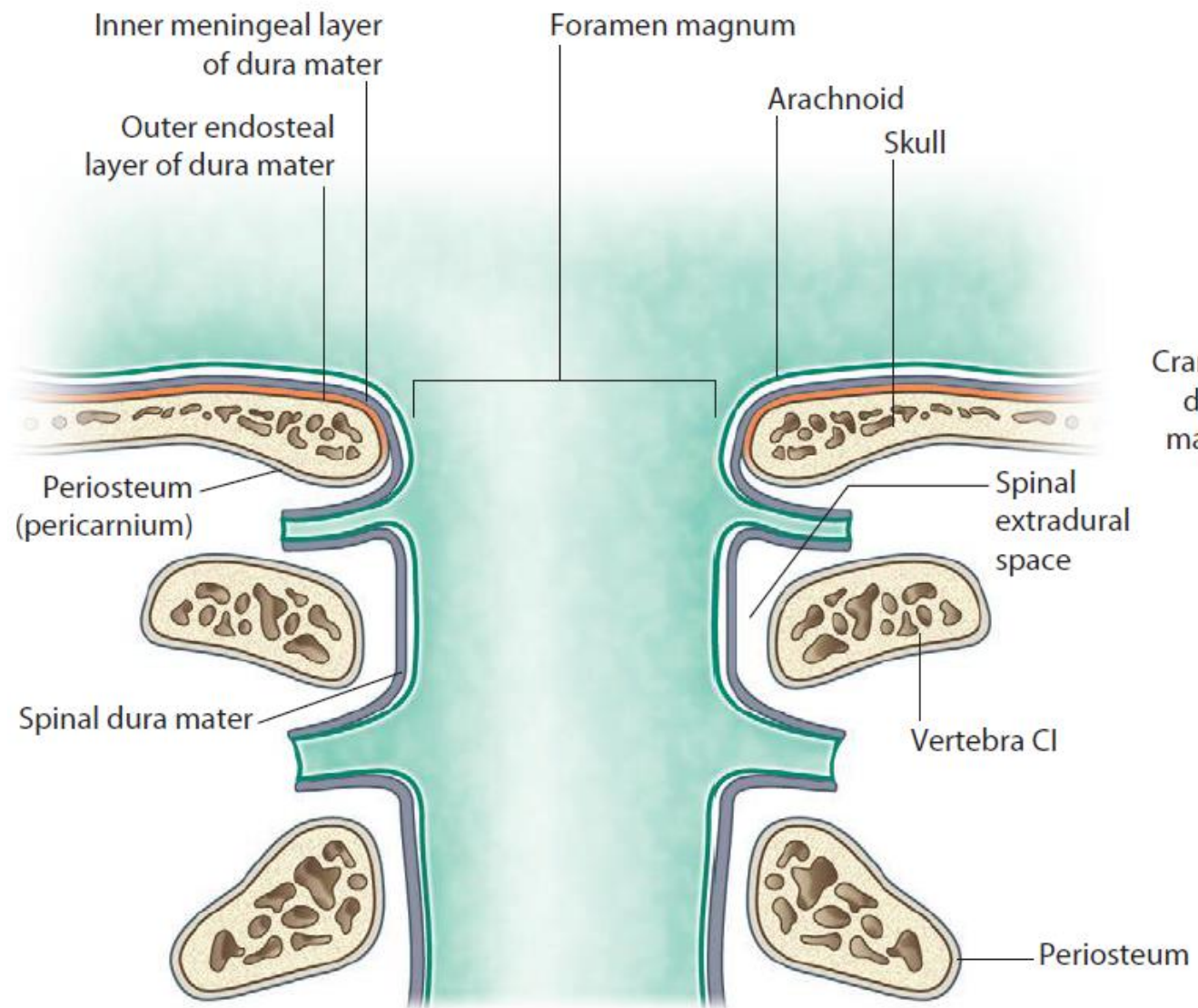




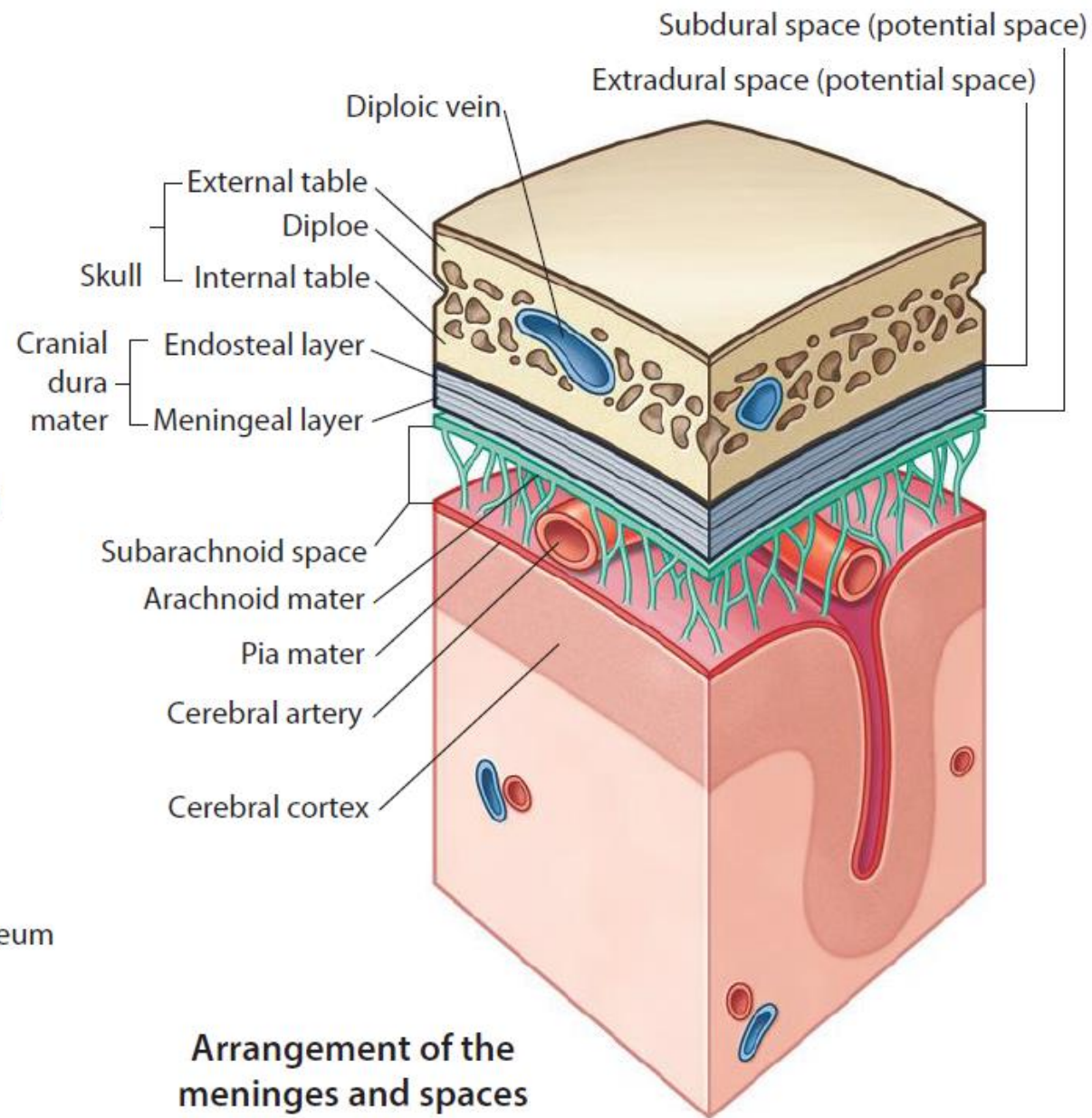




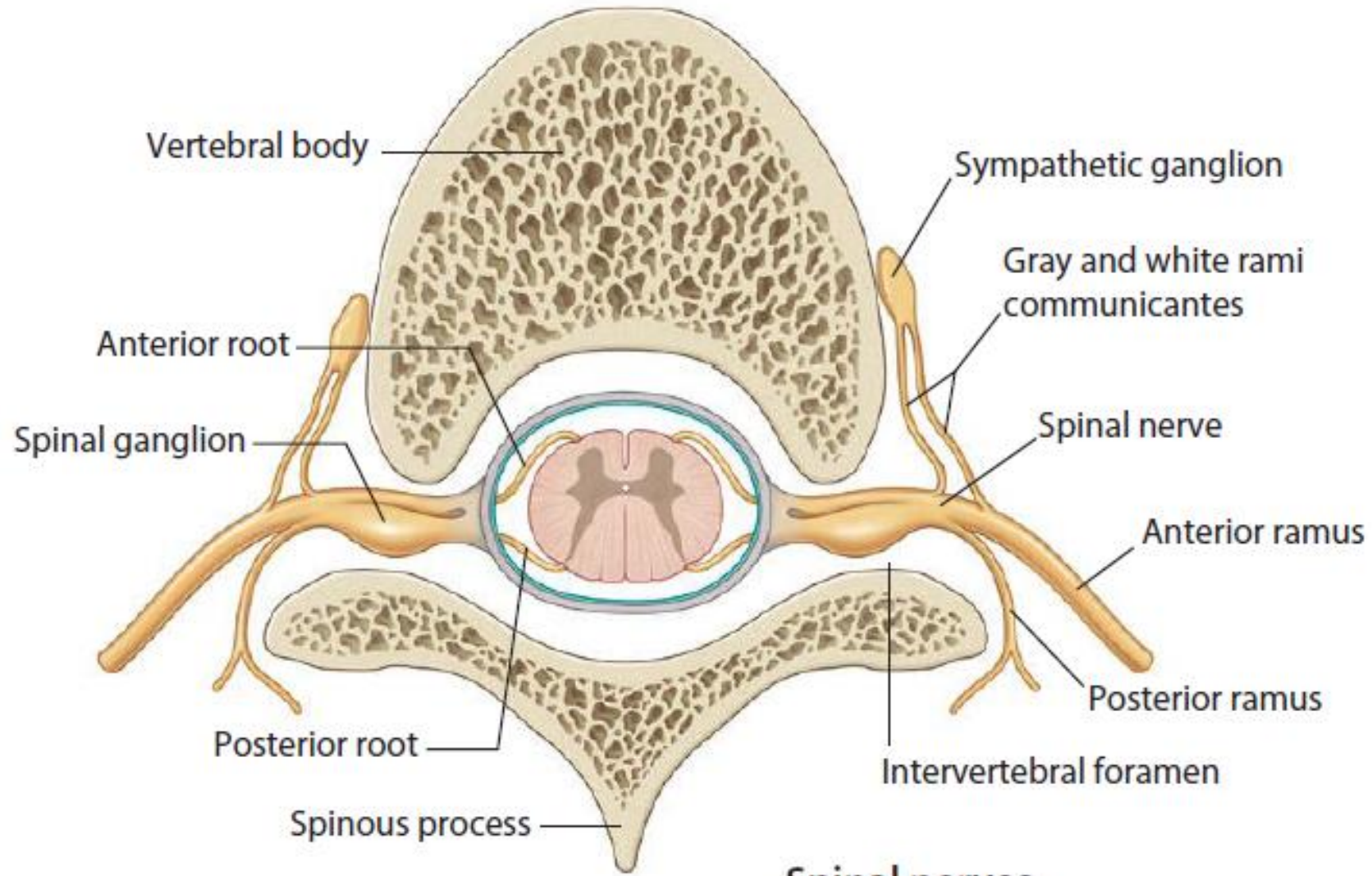




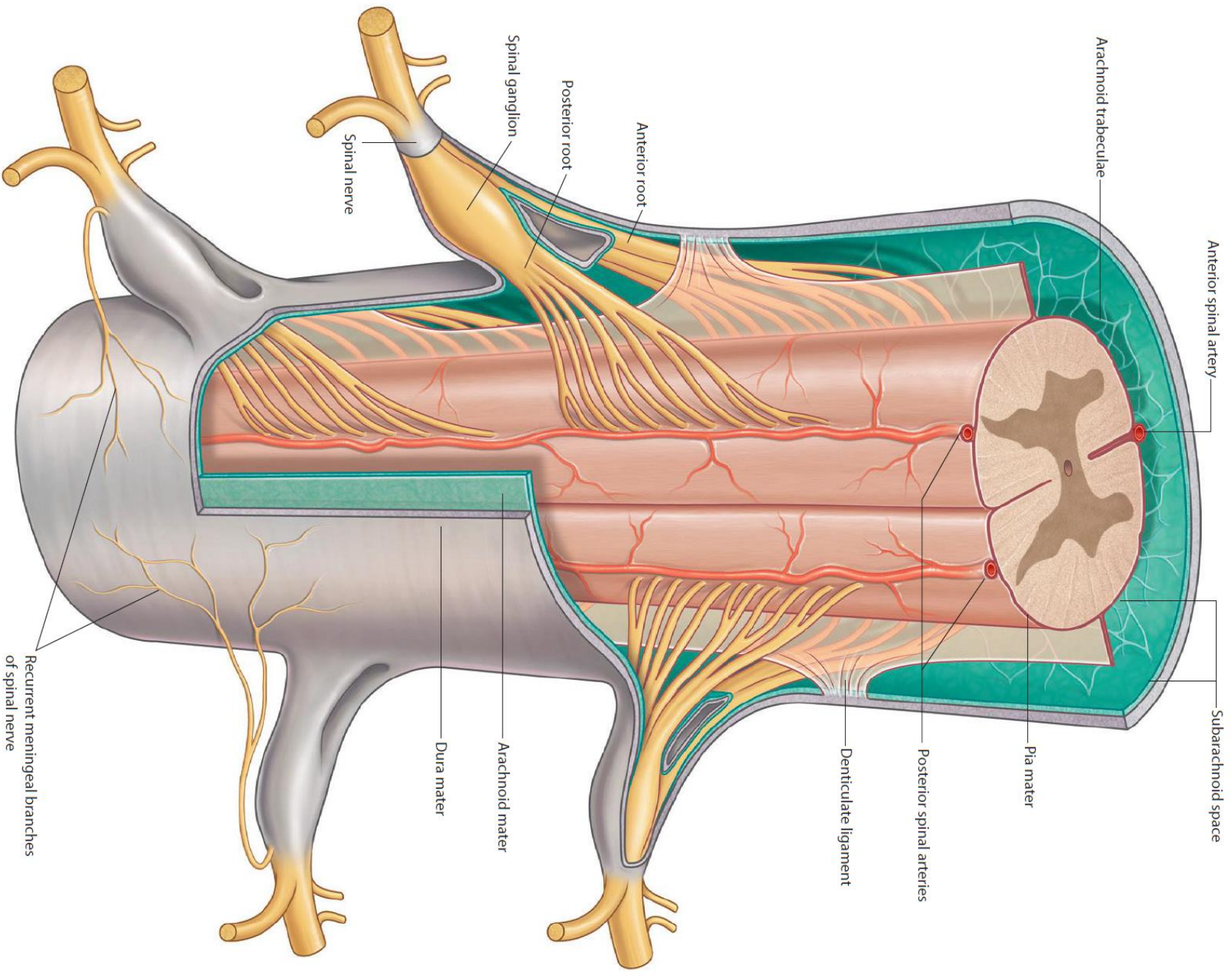
Continuity of cranial meninges with spinal meninges



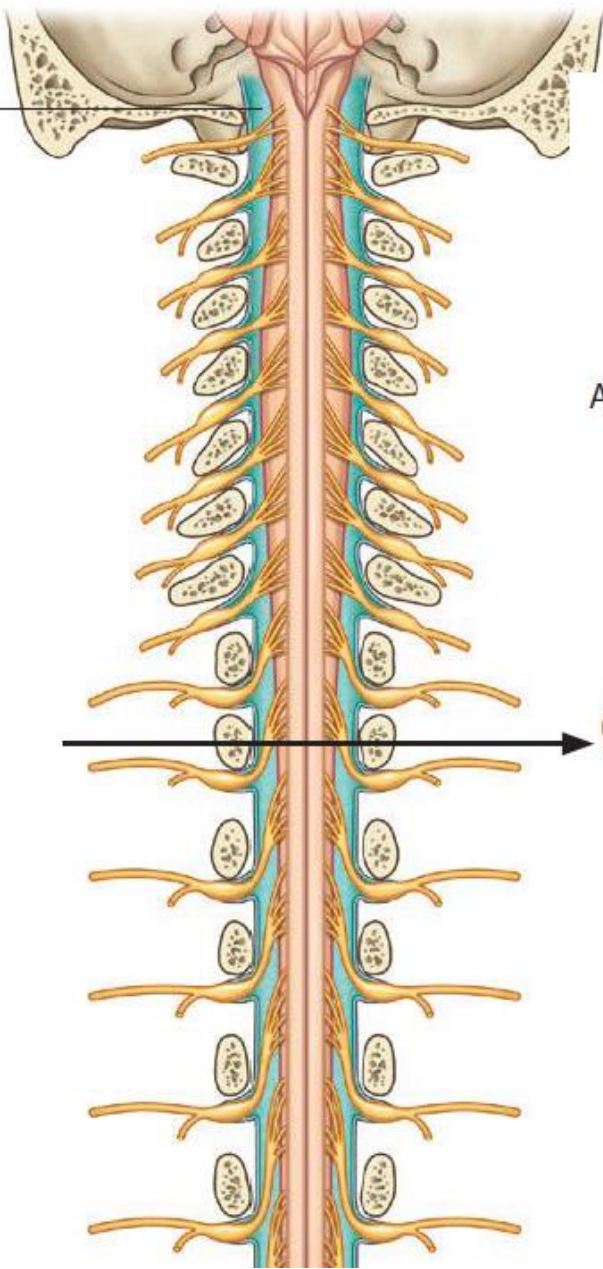
Arrangement of the meninges and spaces



**Spinal nerves
(transverse section)**



Subarachnoid space

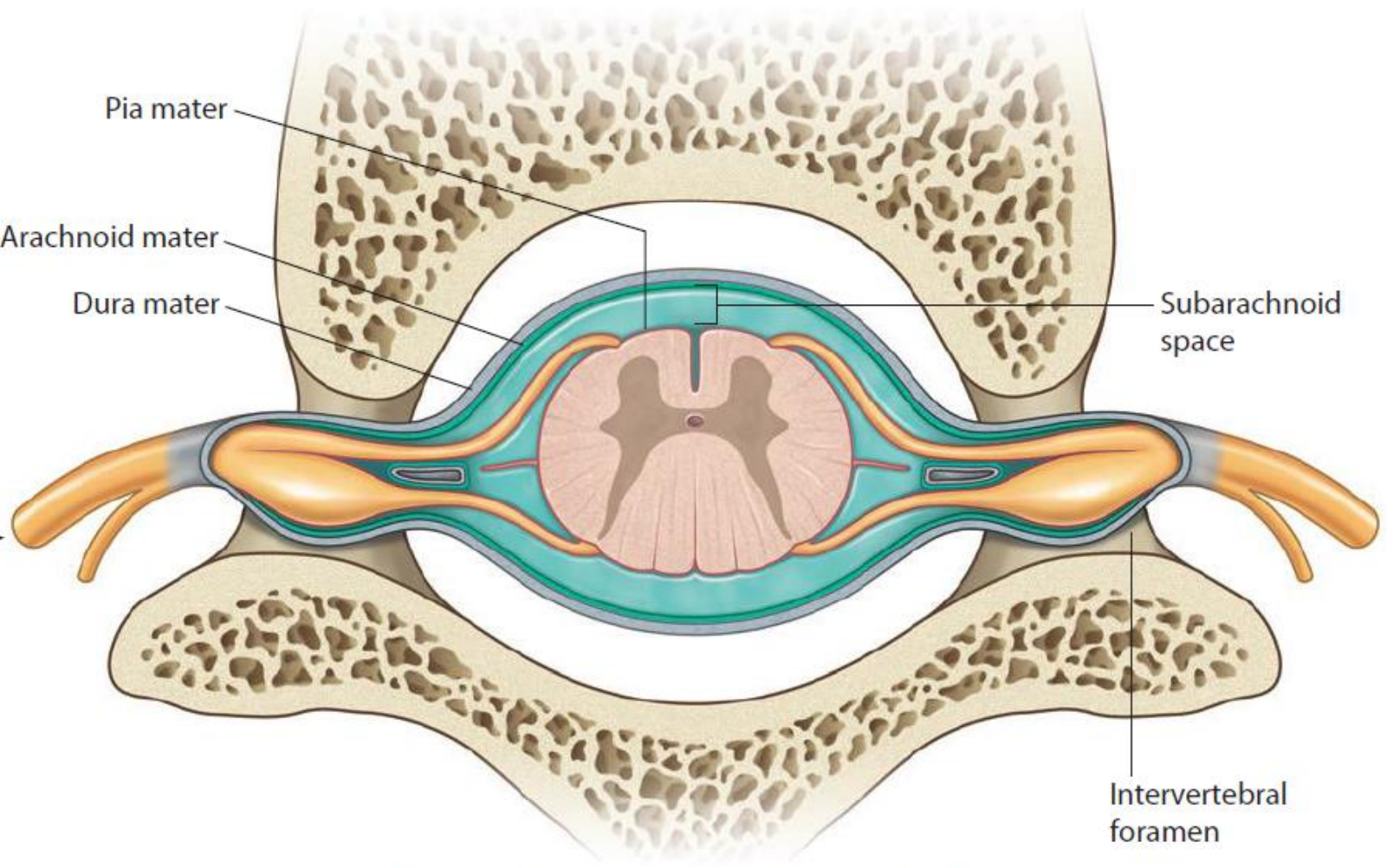


Pia mater

Arachnoid mater

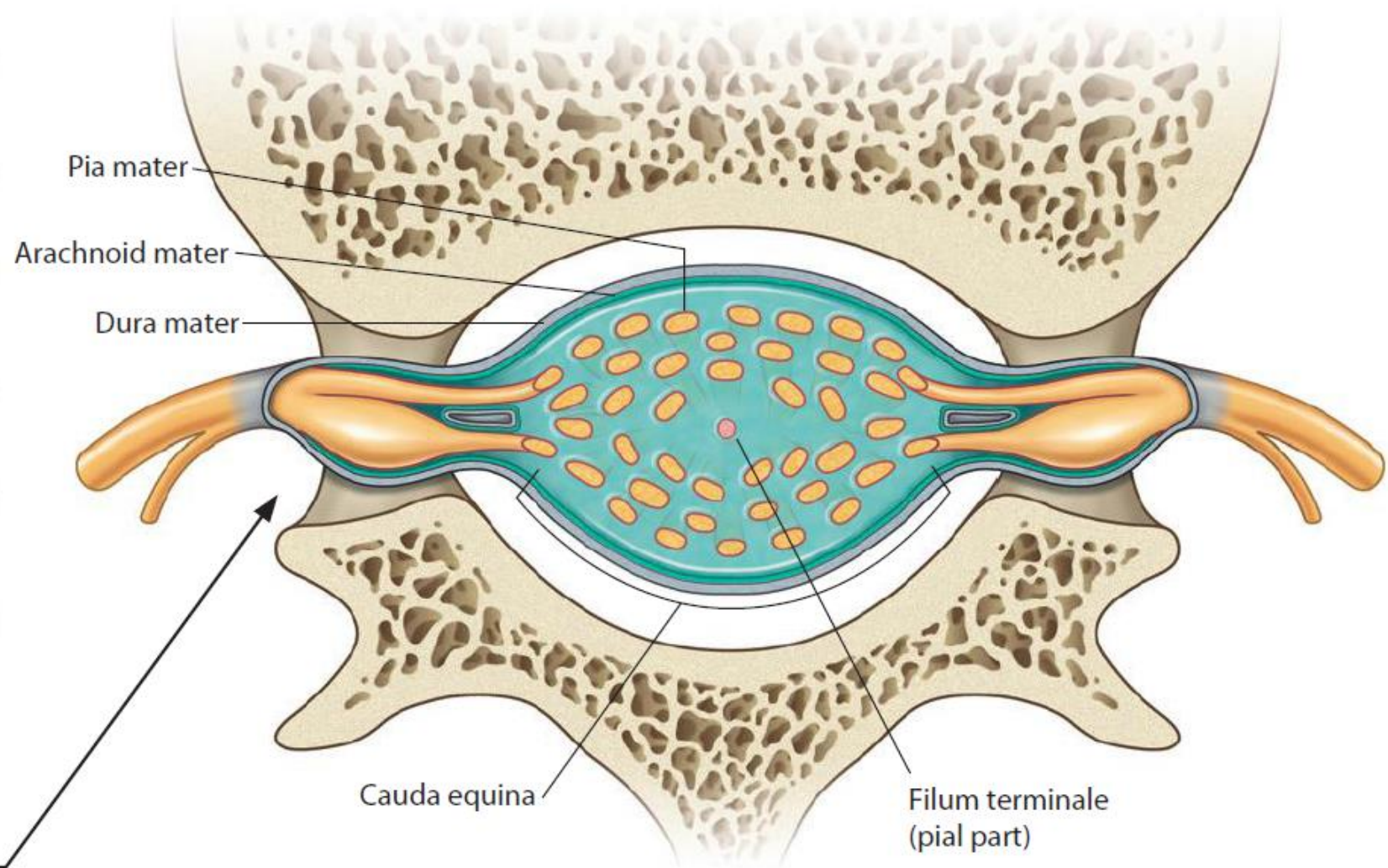
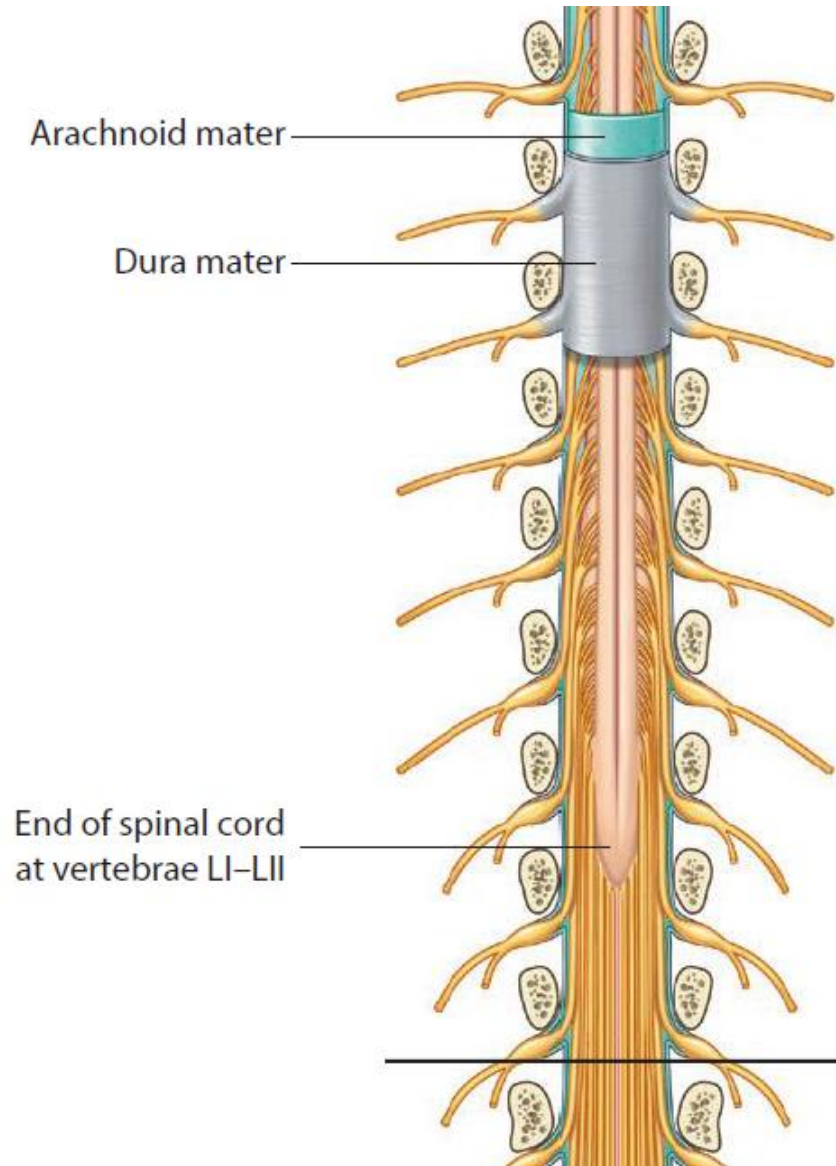
Dura mater

Subarachnoid space

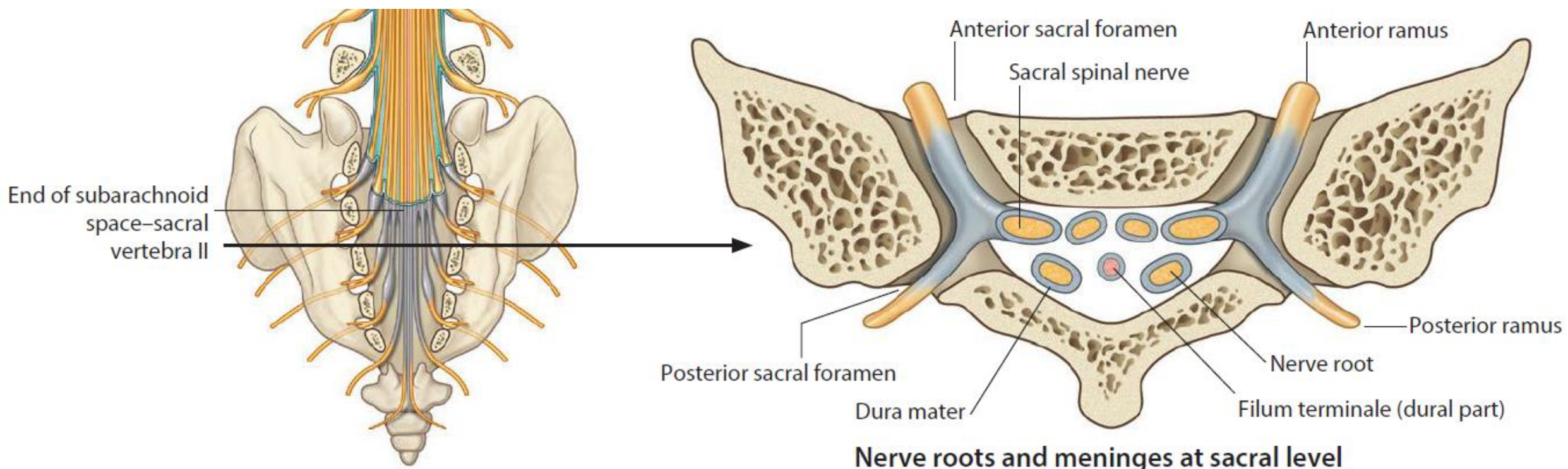


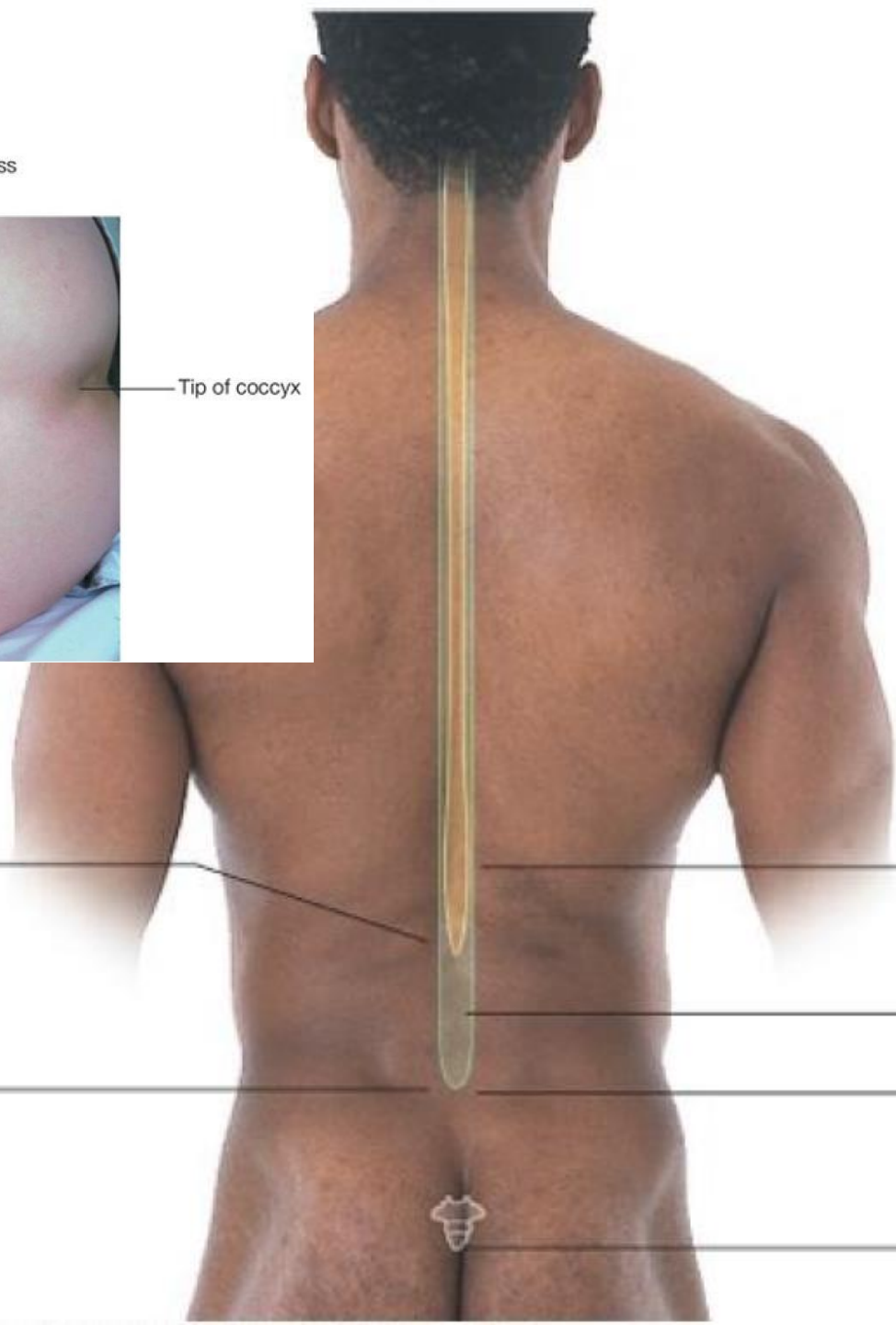
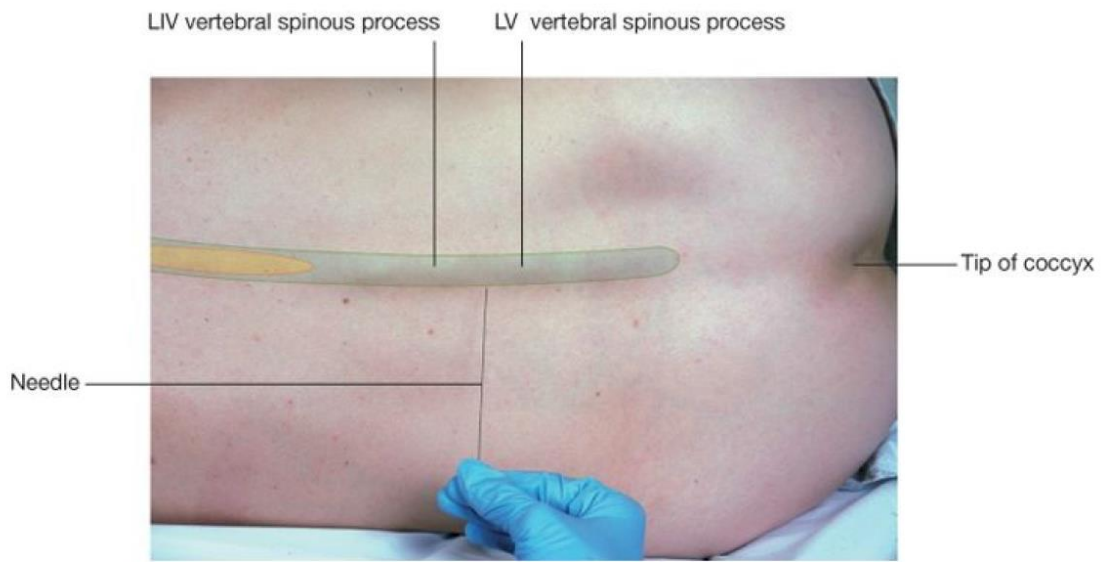
Intervertebral foramen

Cord and meninges at thoracic level



Cauda equina and meninges at lumbar level





Inferior end of spinal cord
(normally between
L1 and L2 vertebra)

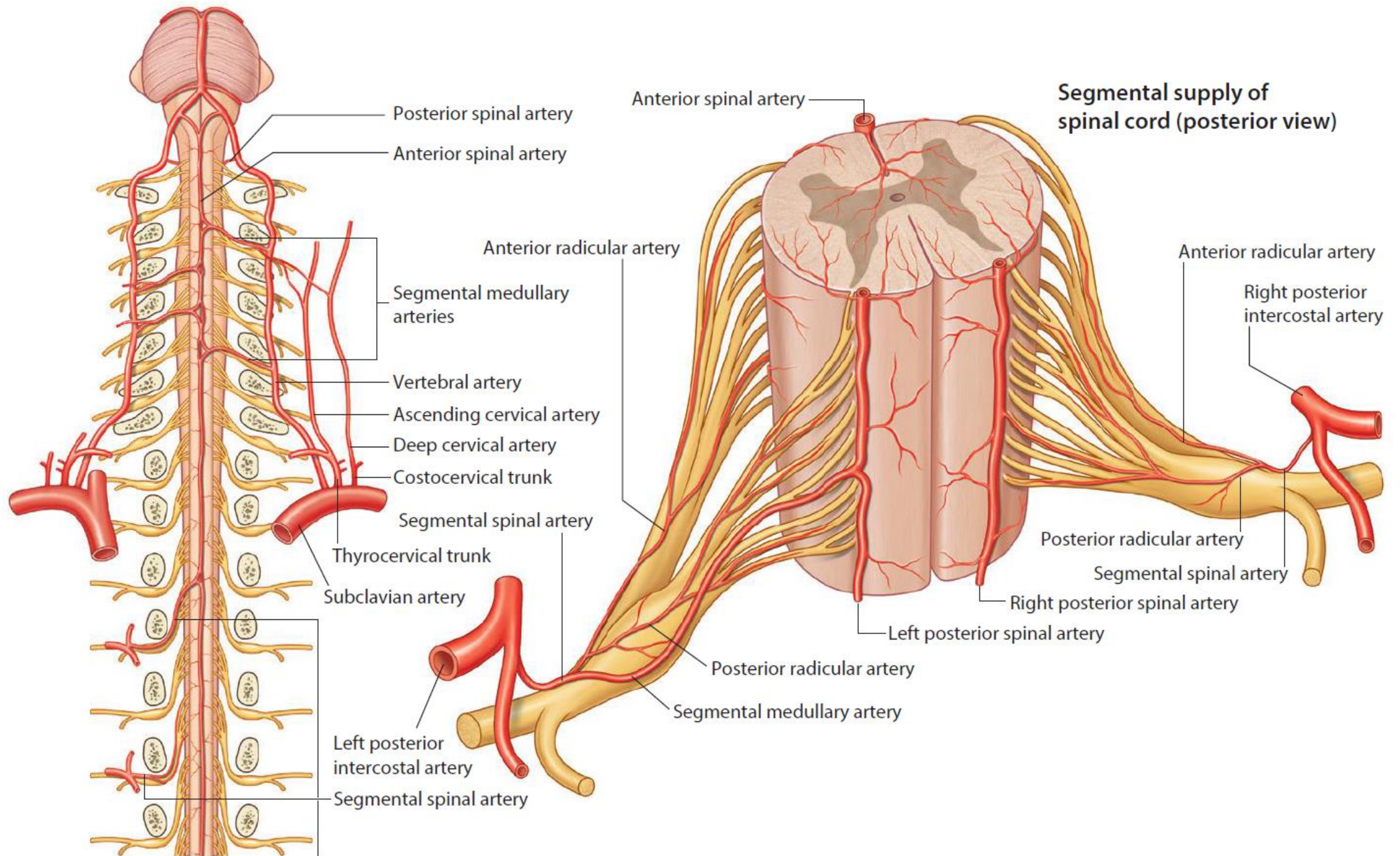
Inferior end of
subarachnoid space

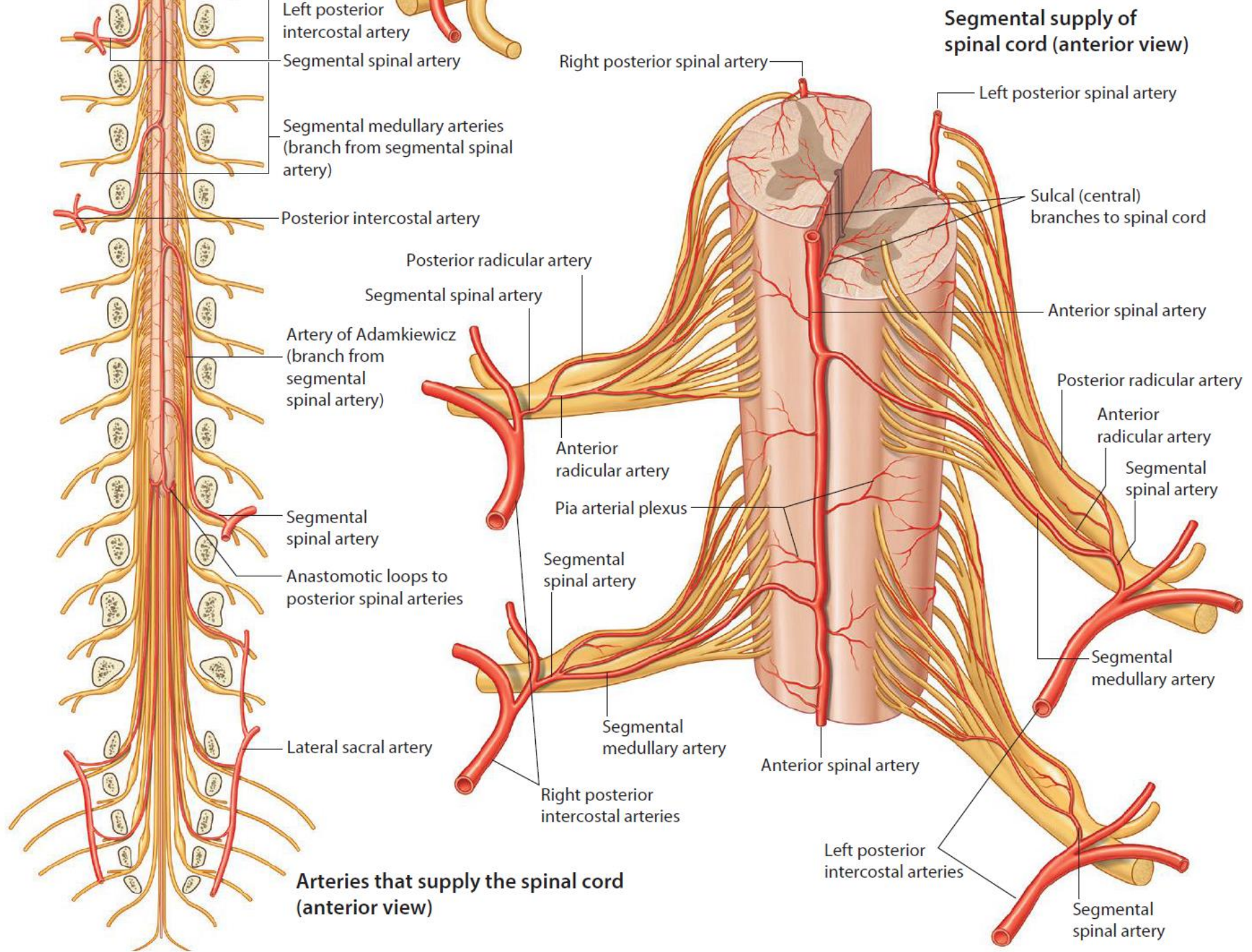
TXII vertebral spinous process

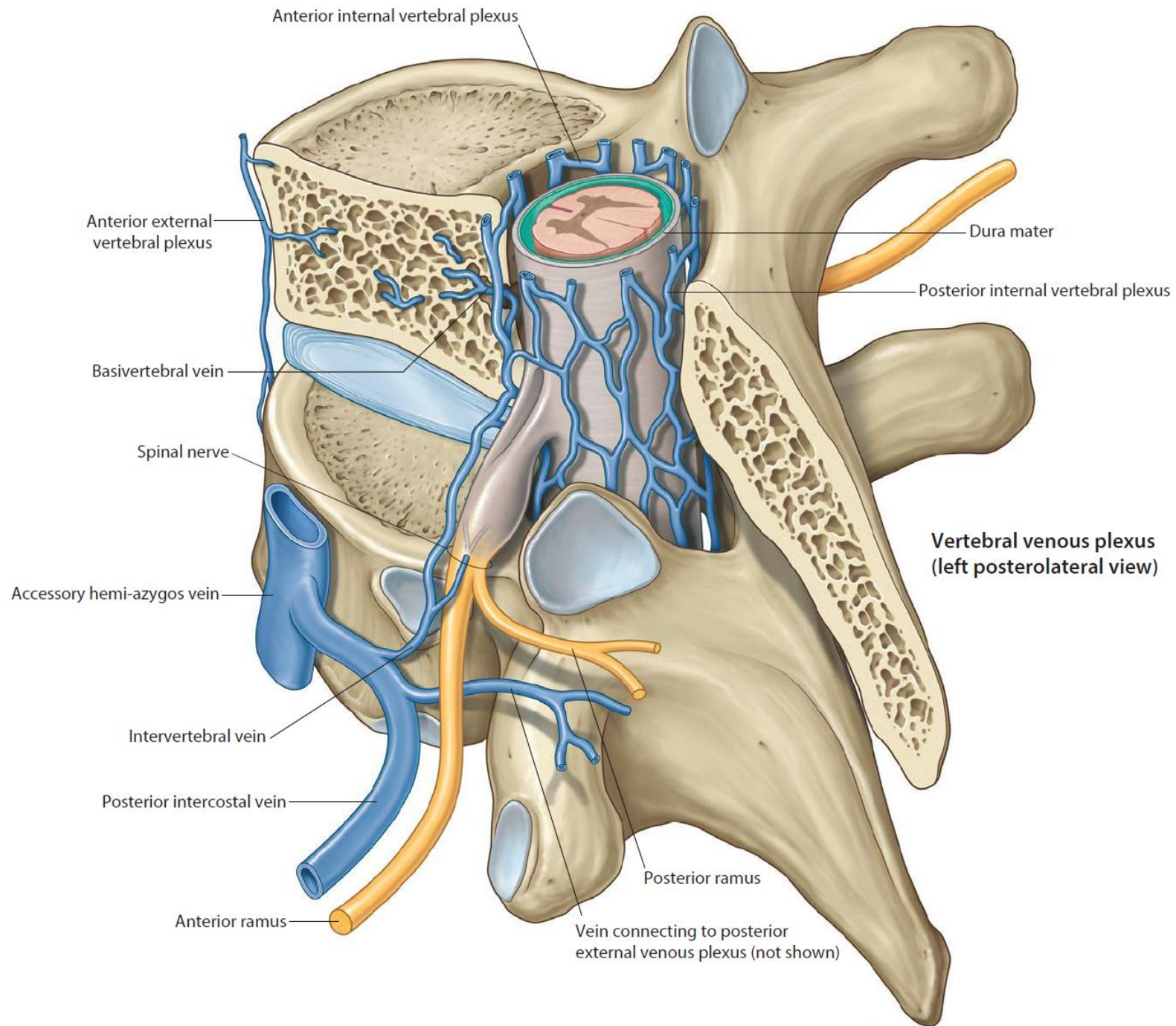
LIV vertebral spinous process

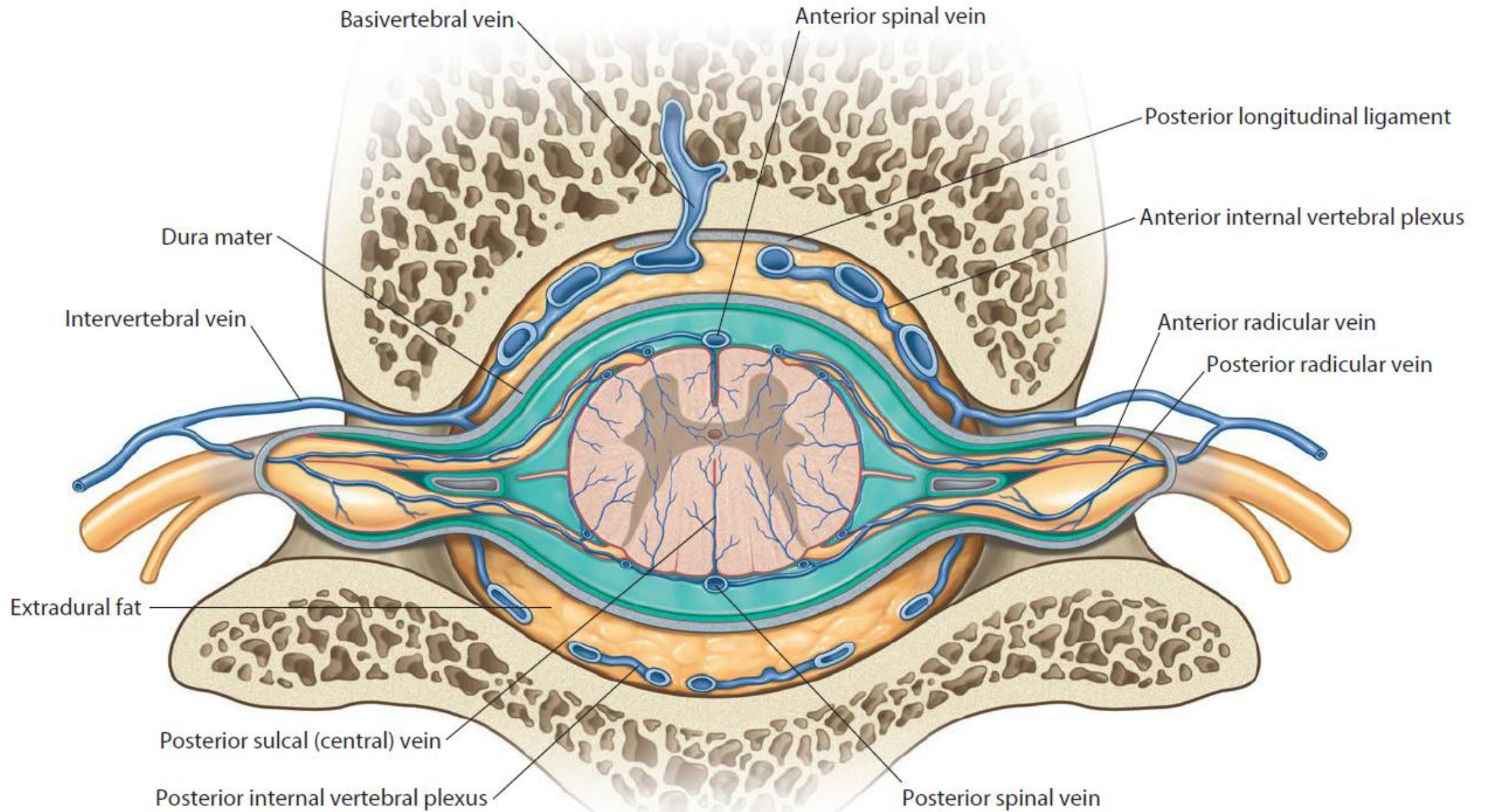
SII vertebral spinous process

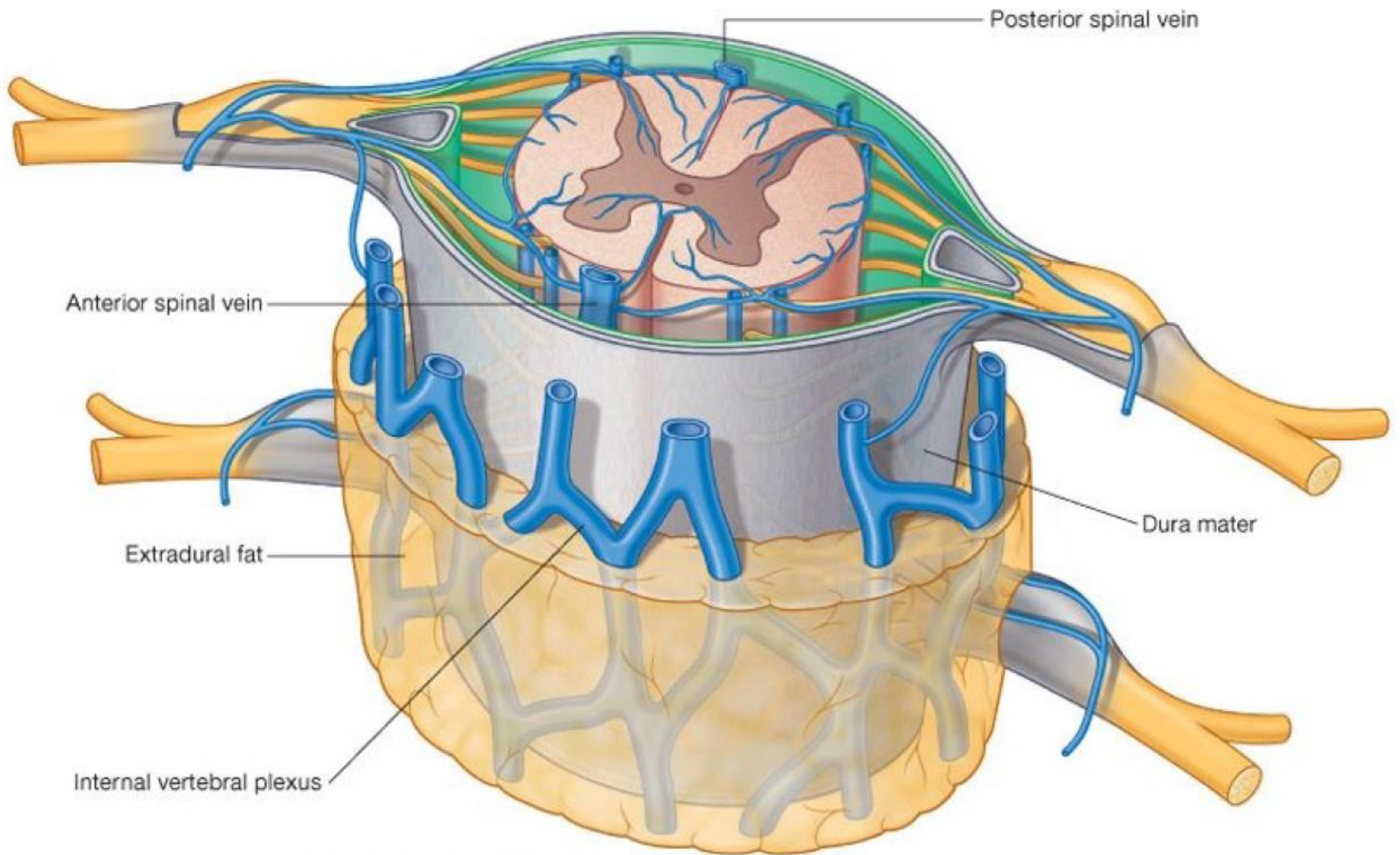
Tip of coccyx

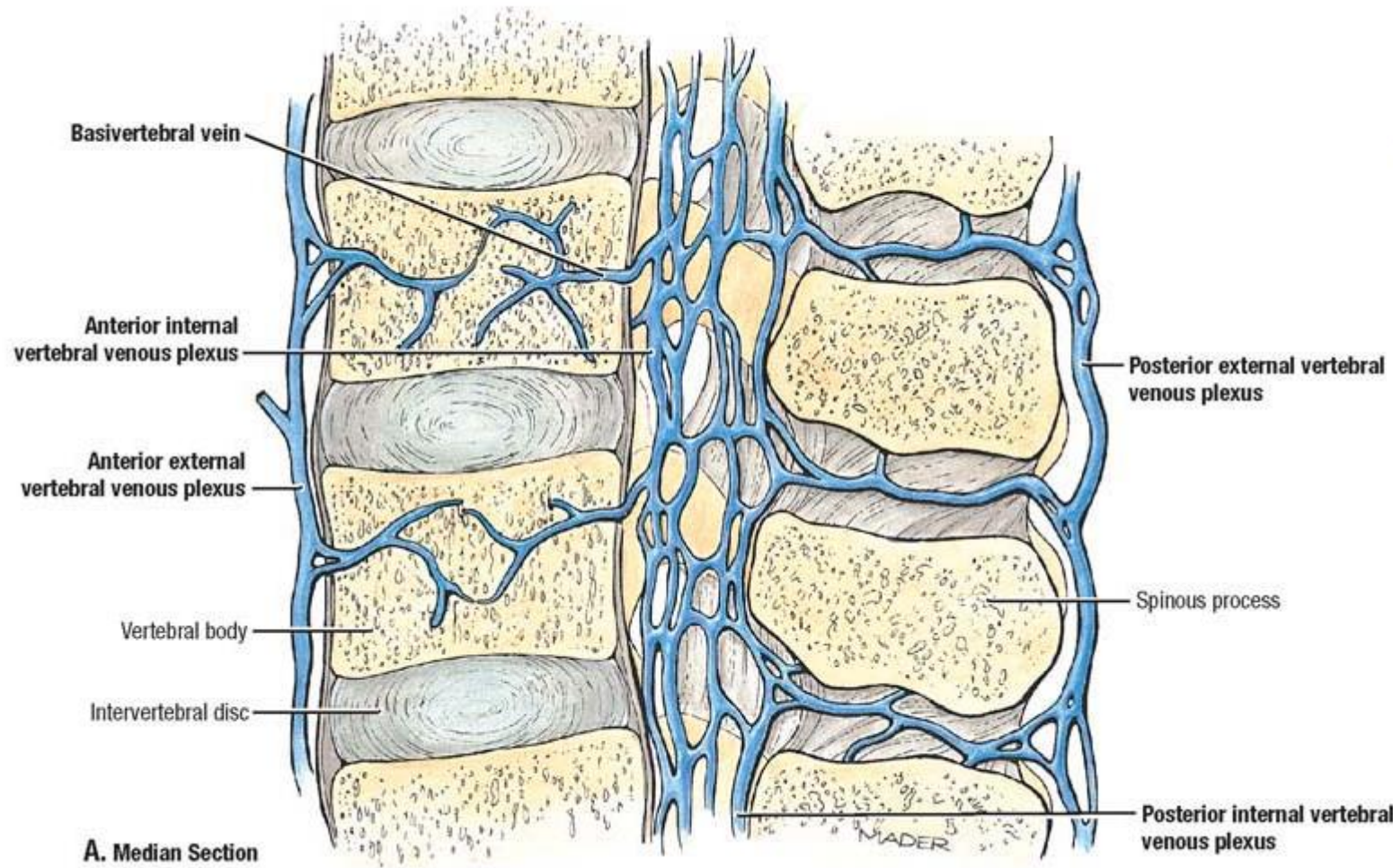












A. Median Section

