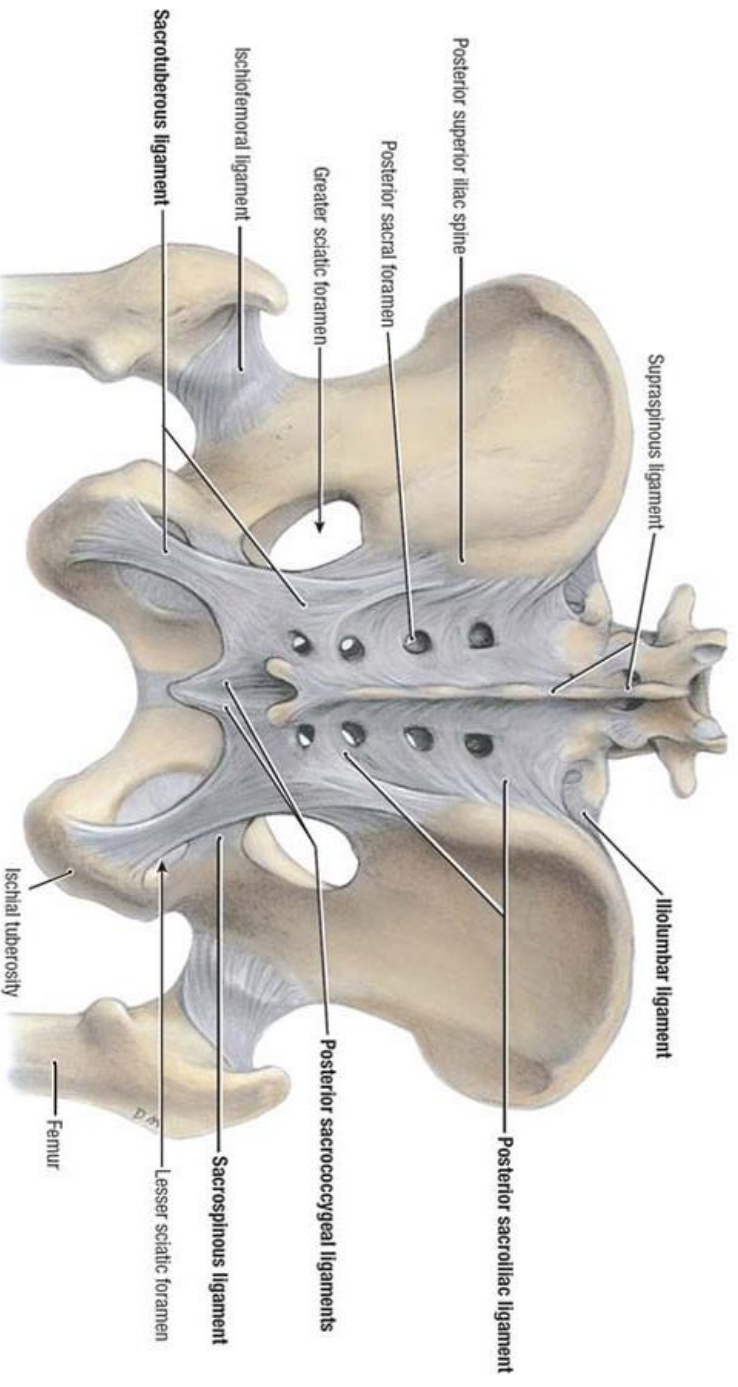
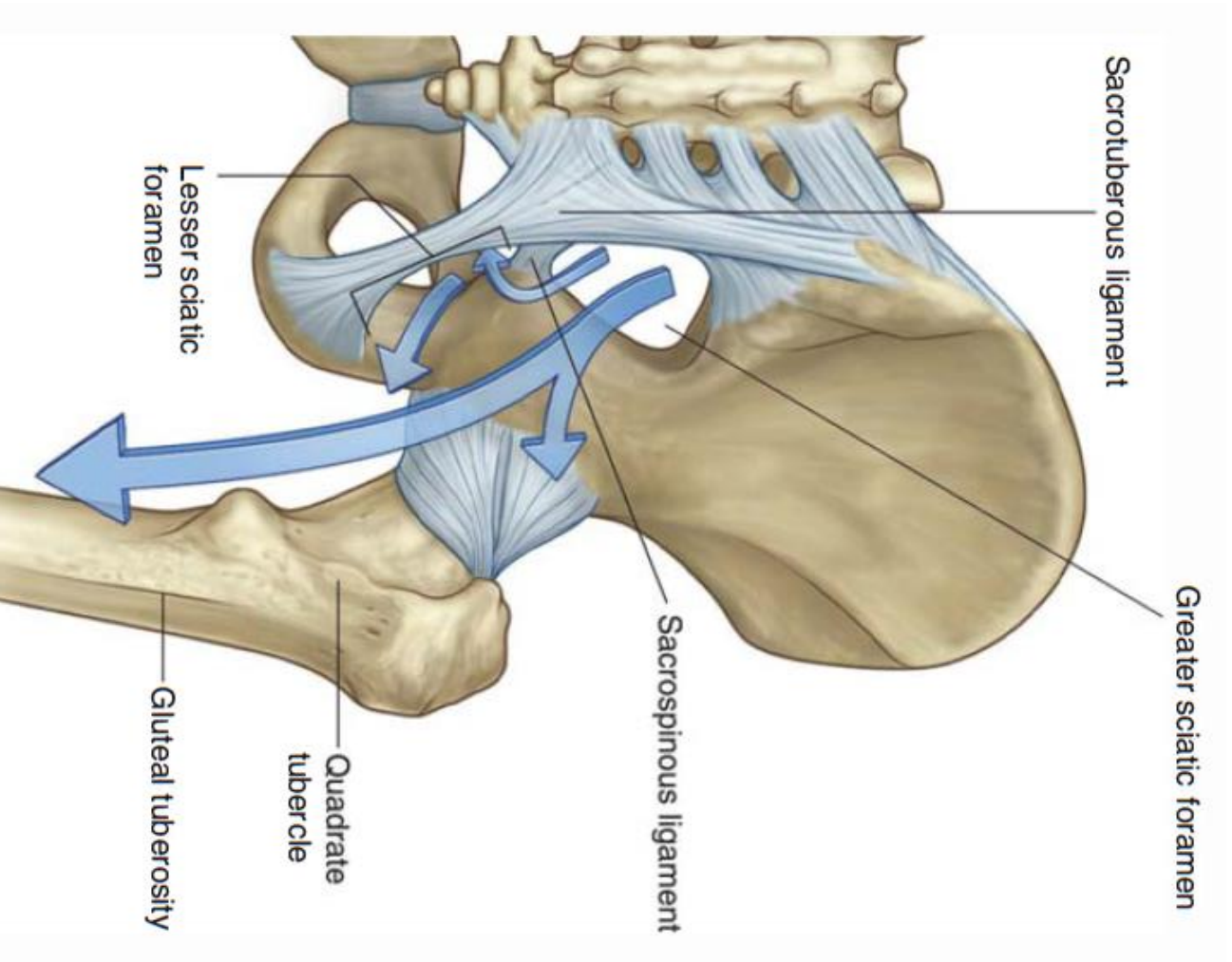


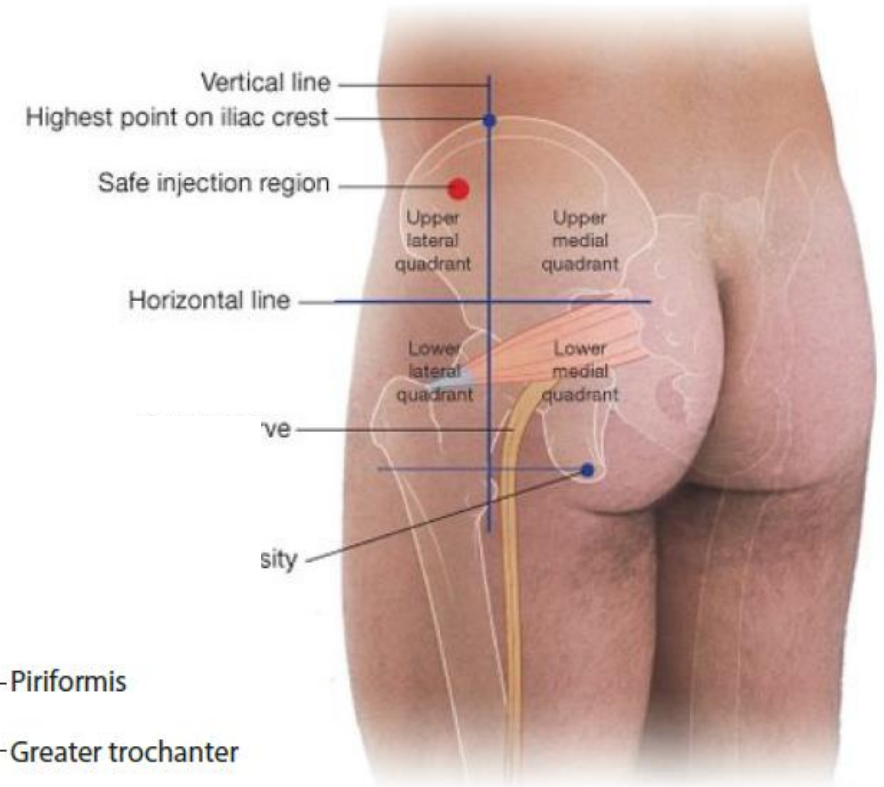
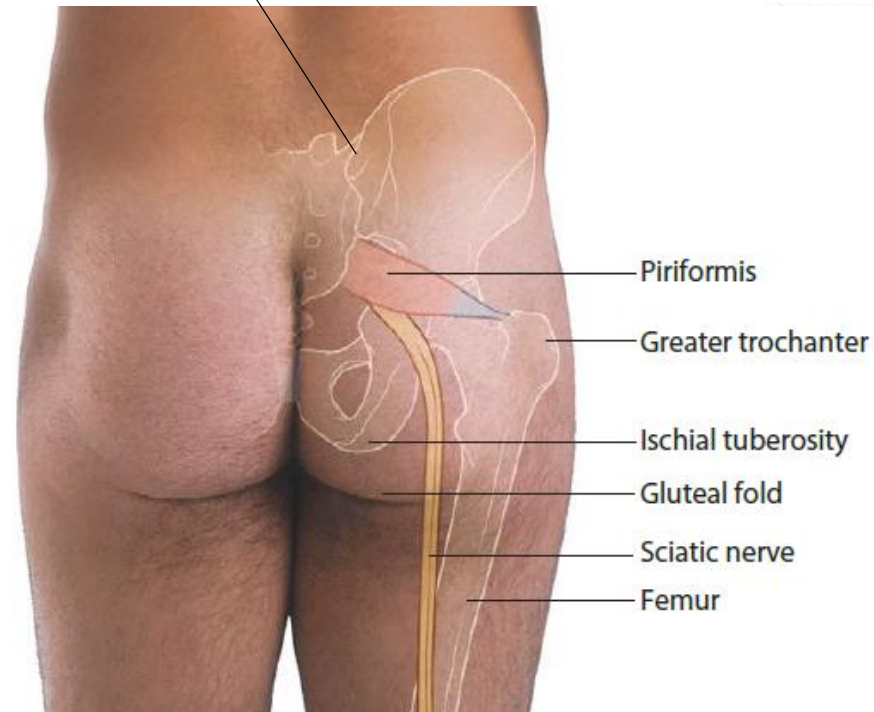
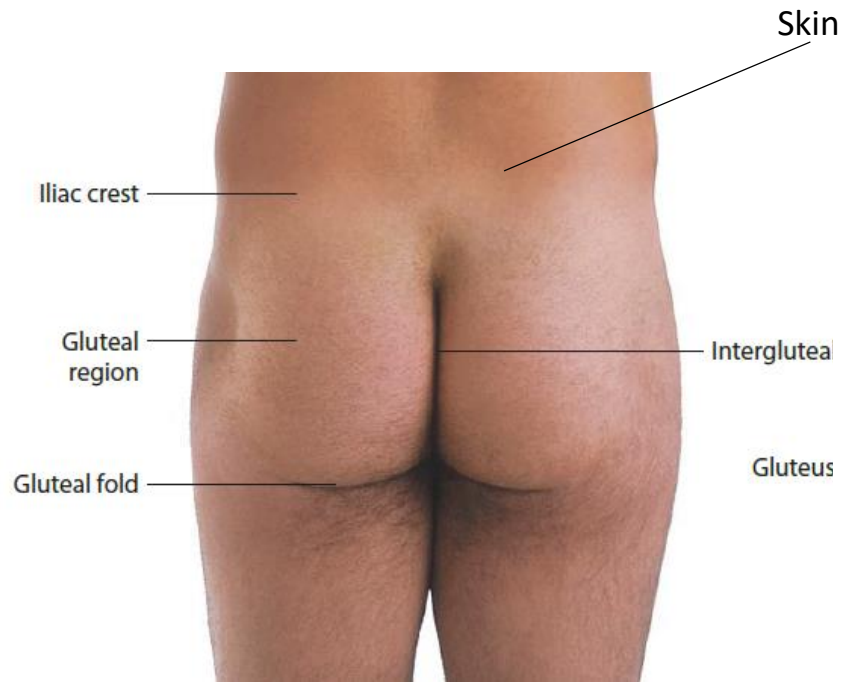
Pelvic ligaments: posterior view

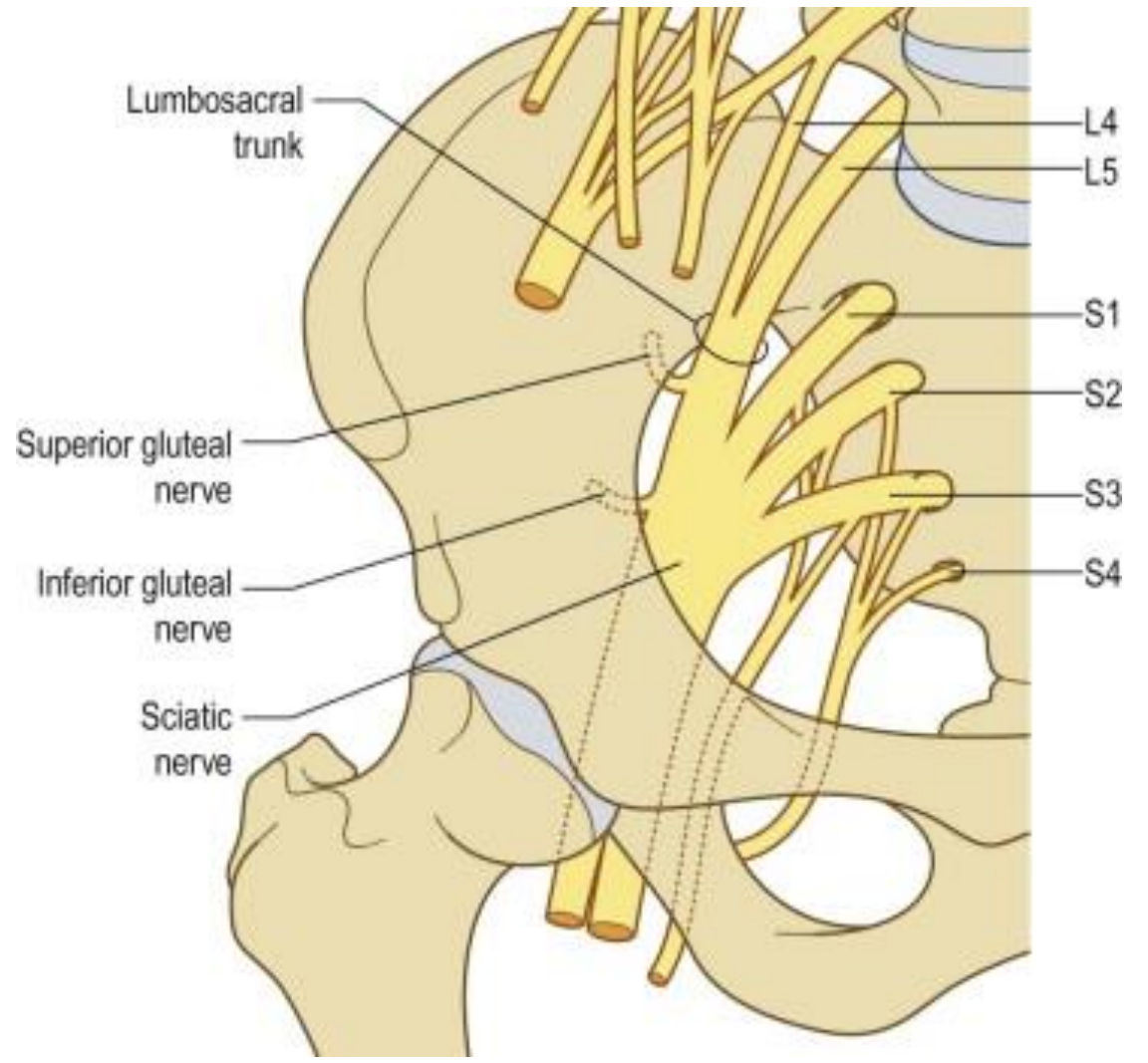
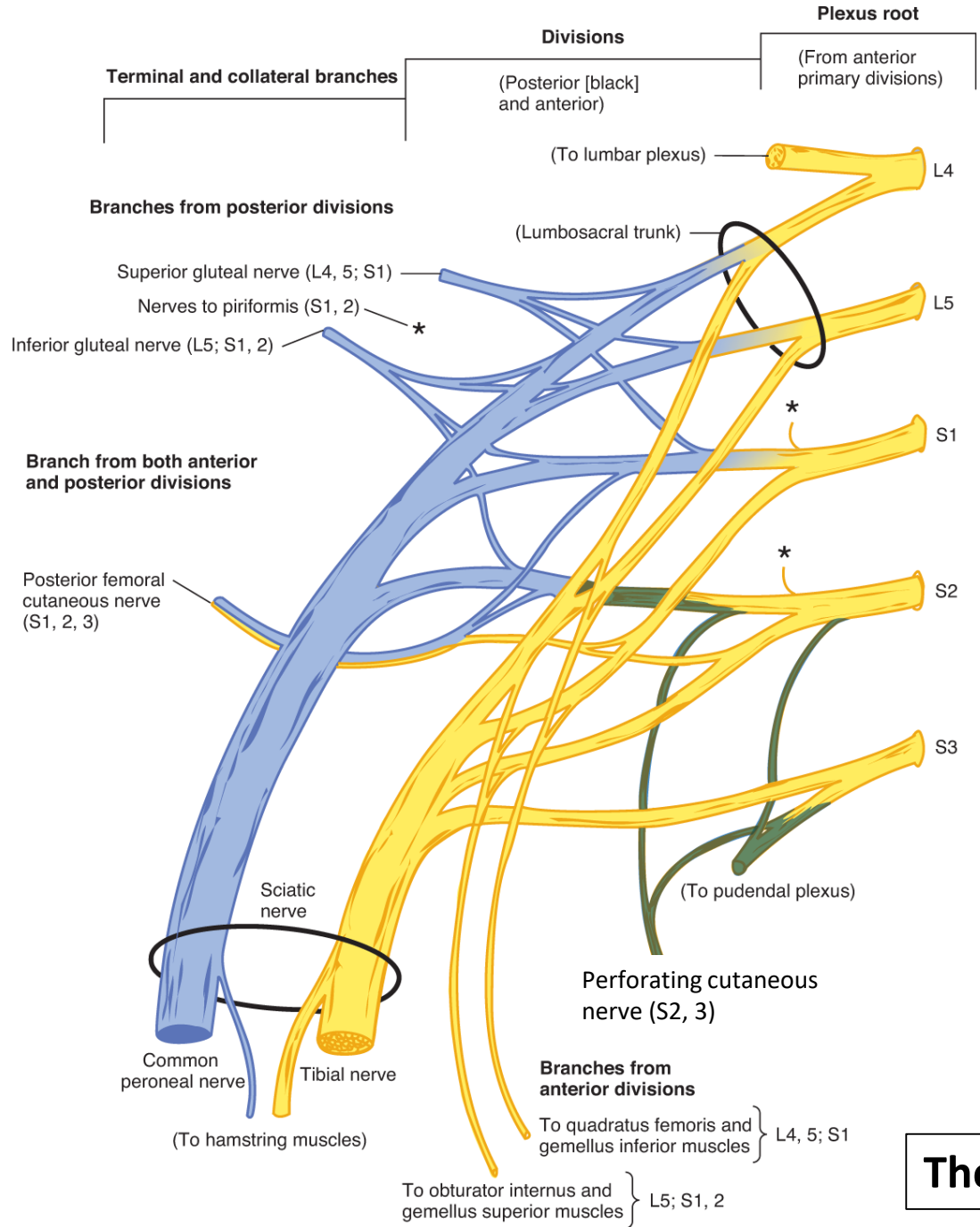


B. Posterior View



Surface Anatomy

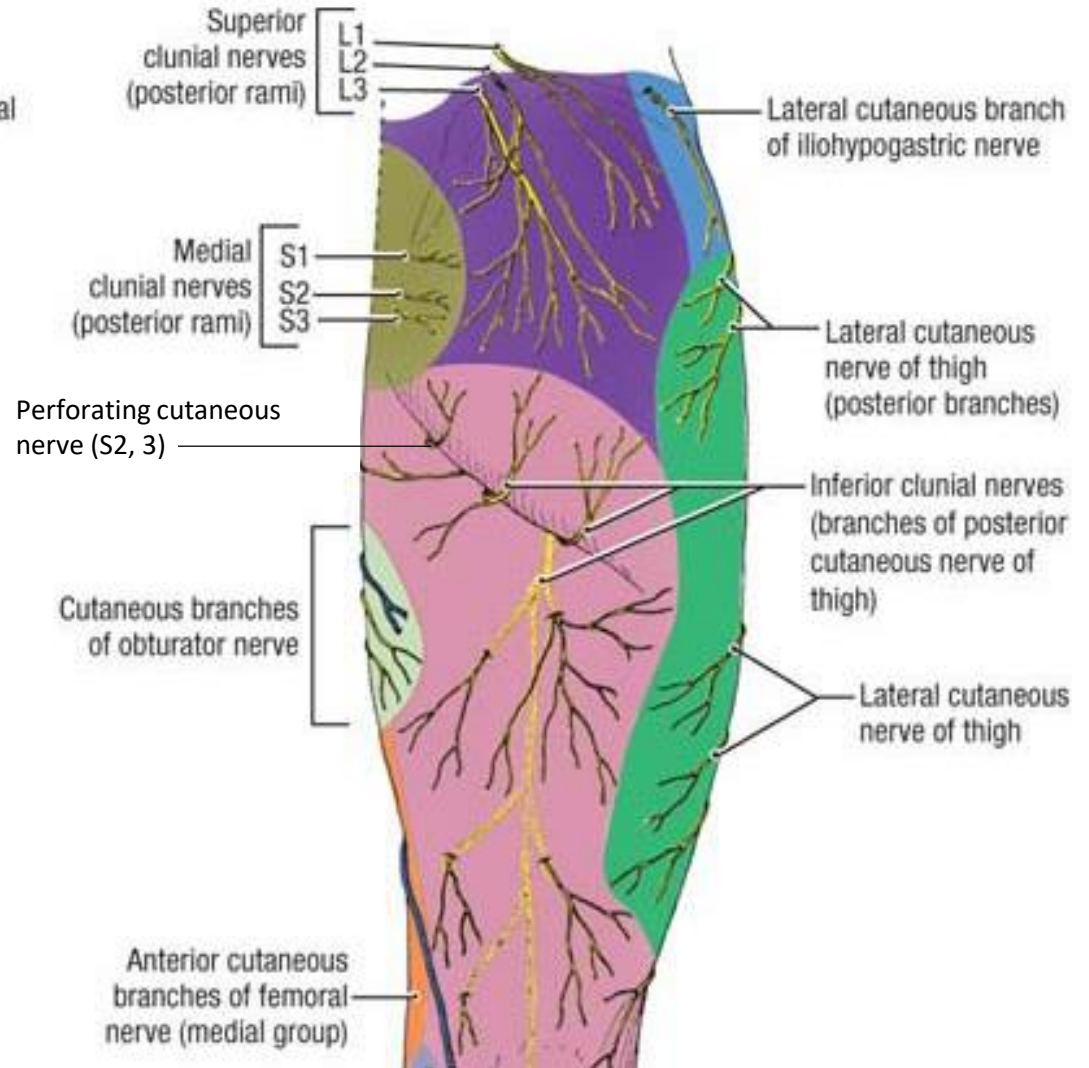
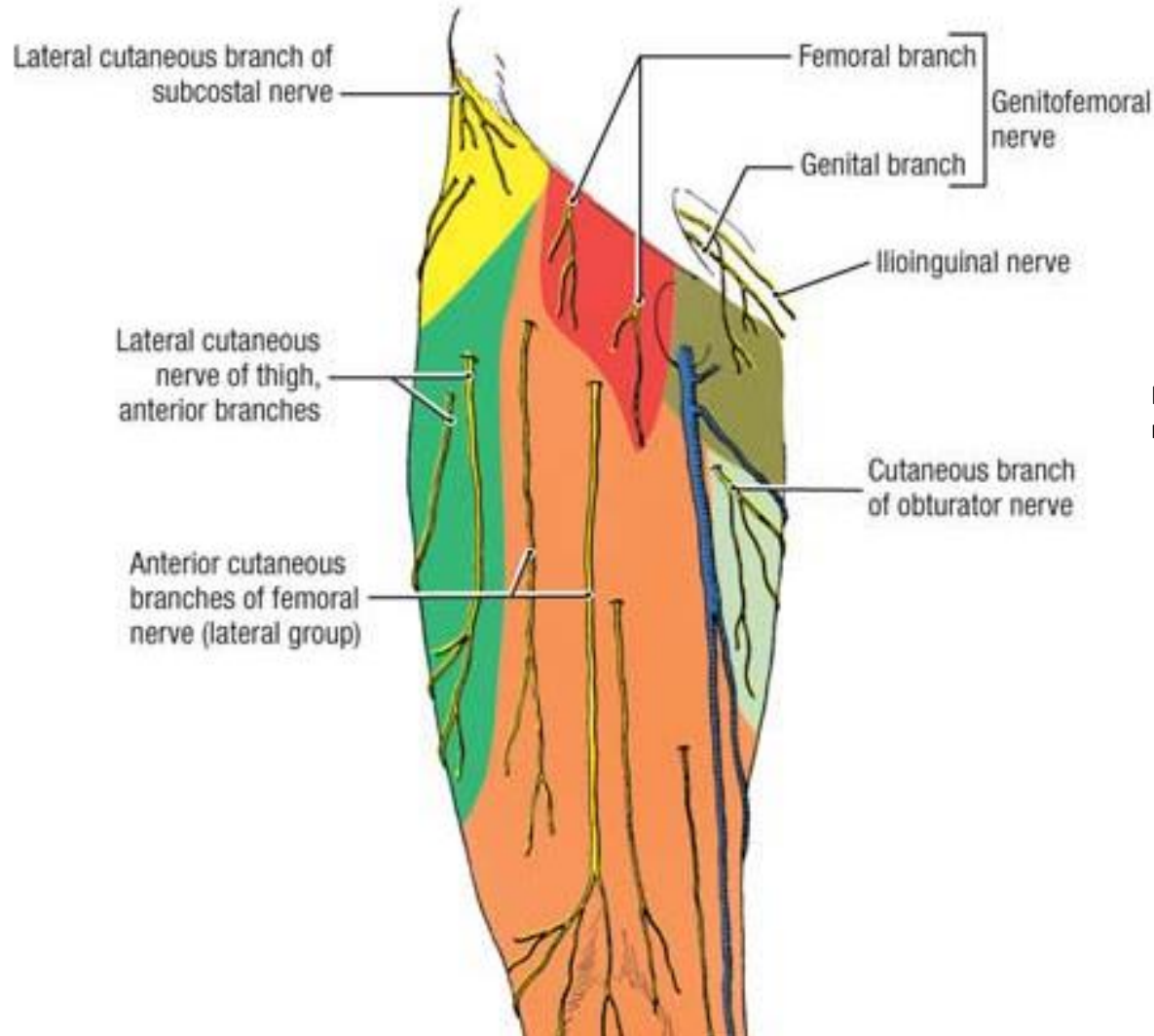


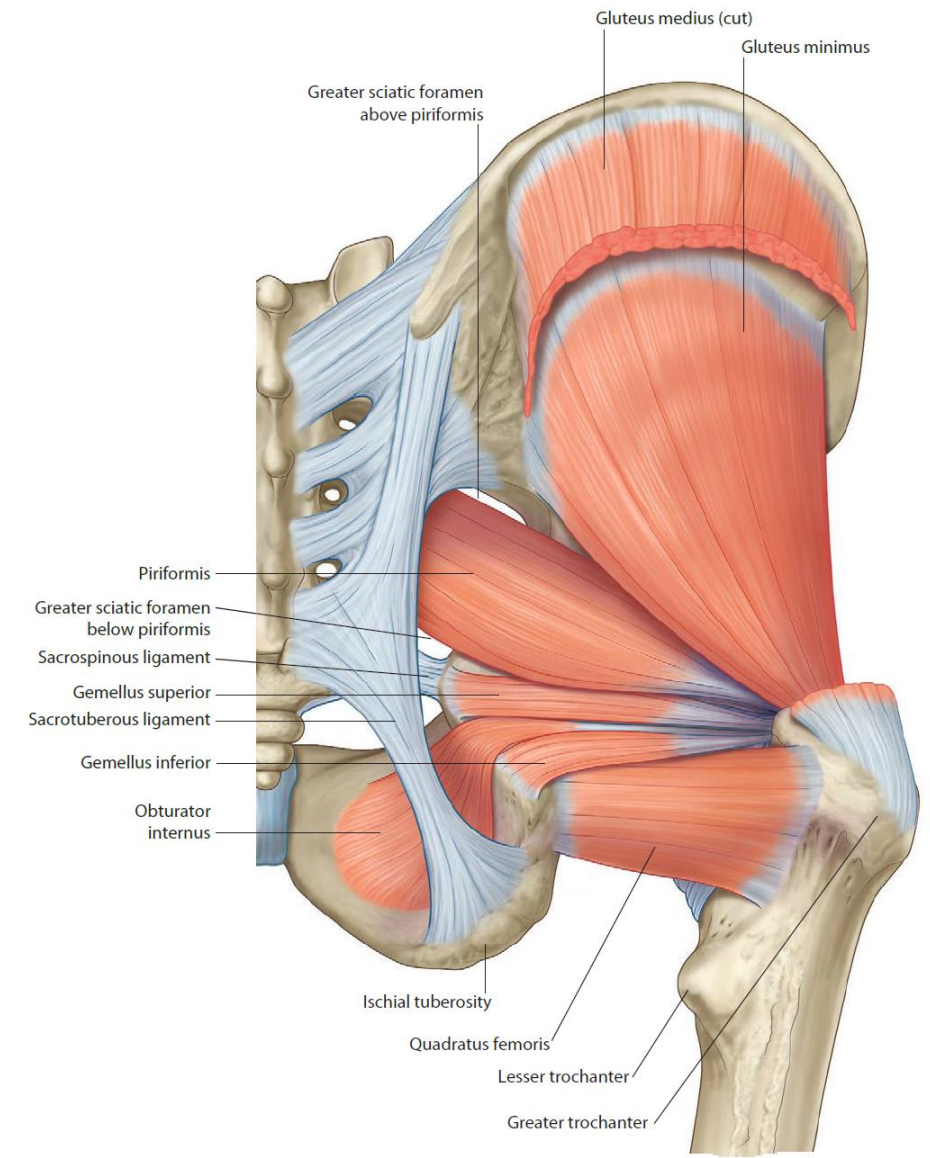
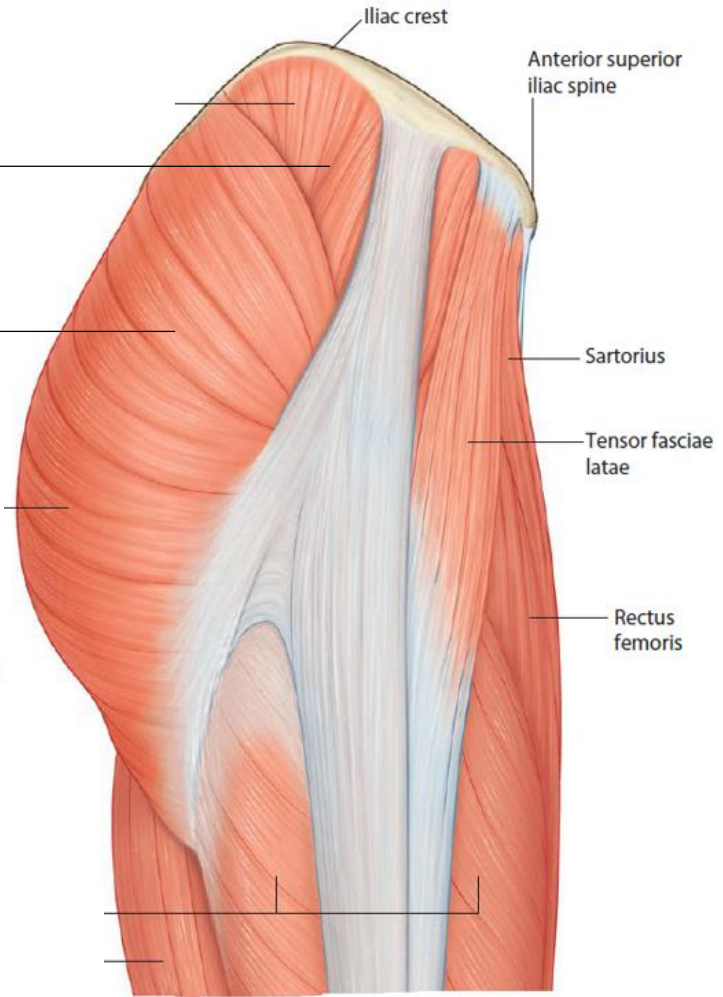
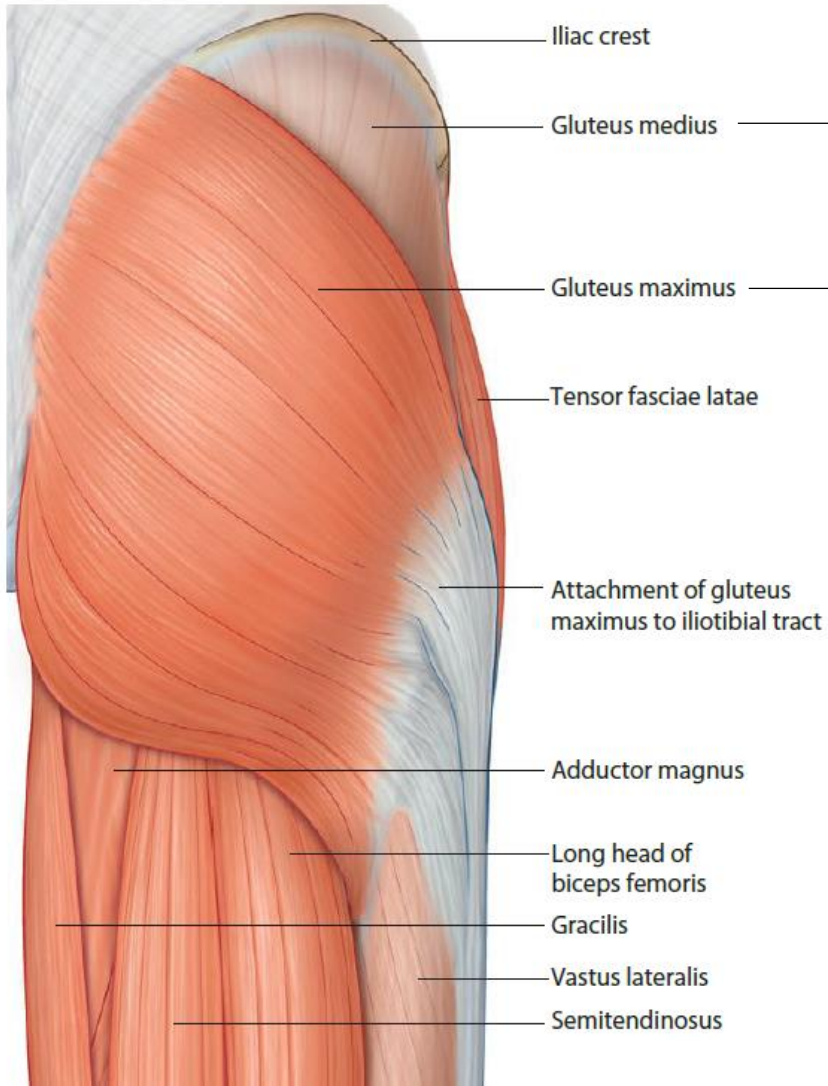


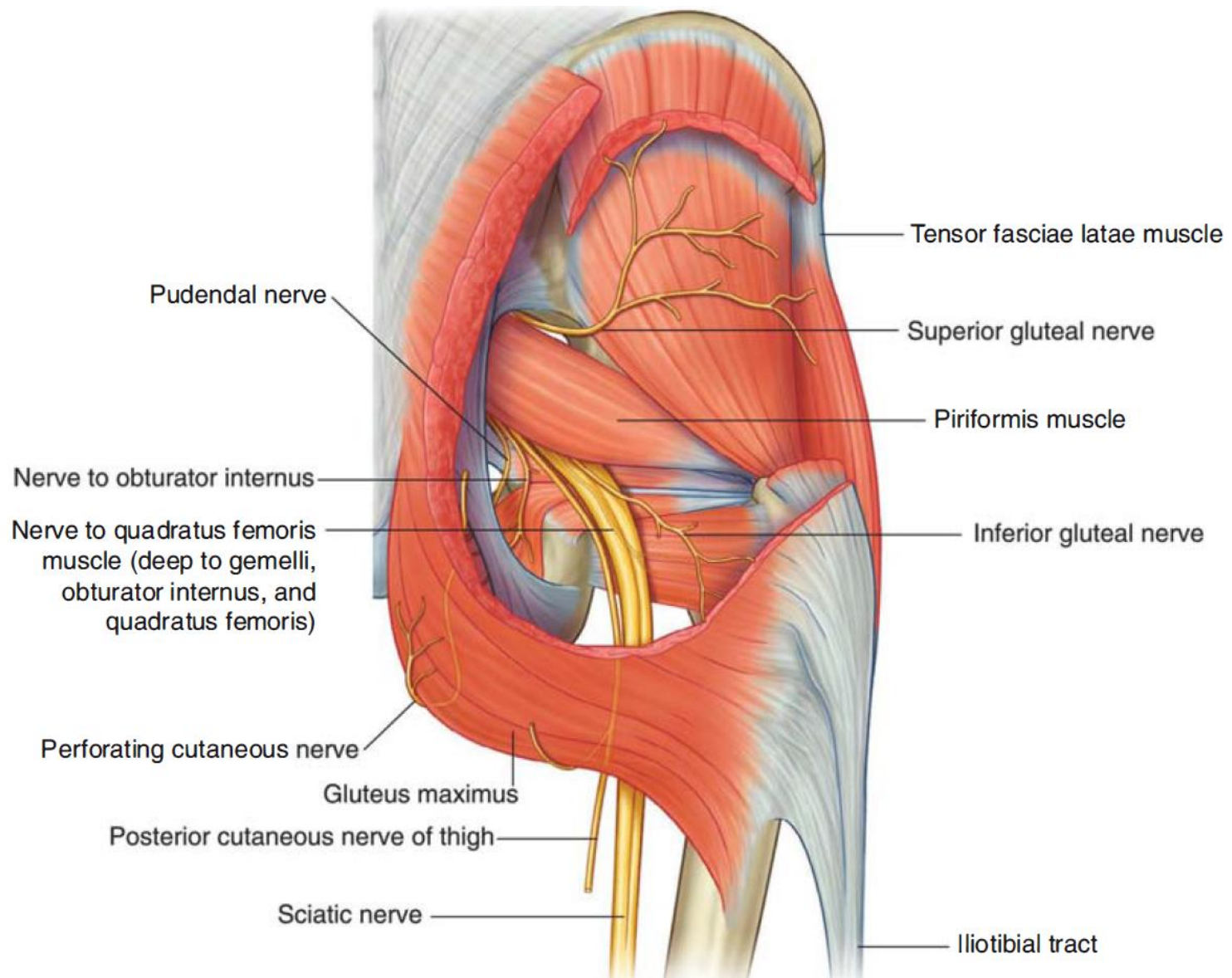
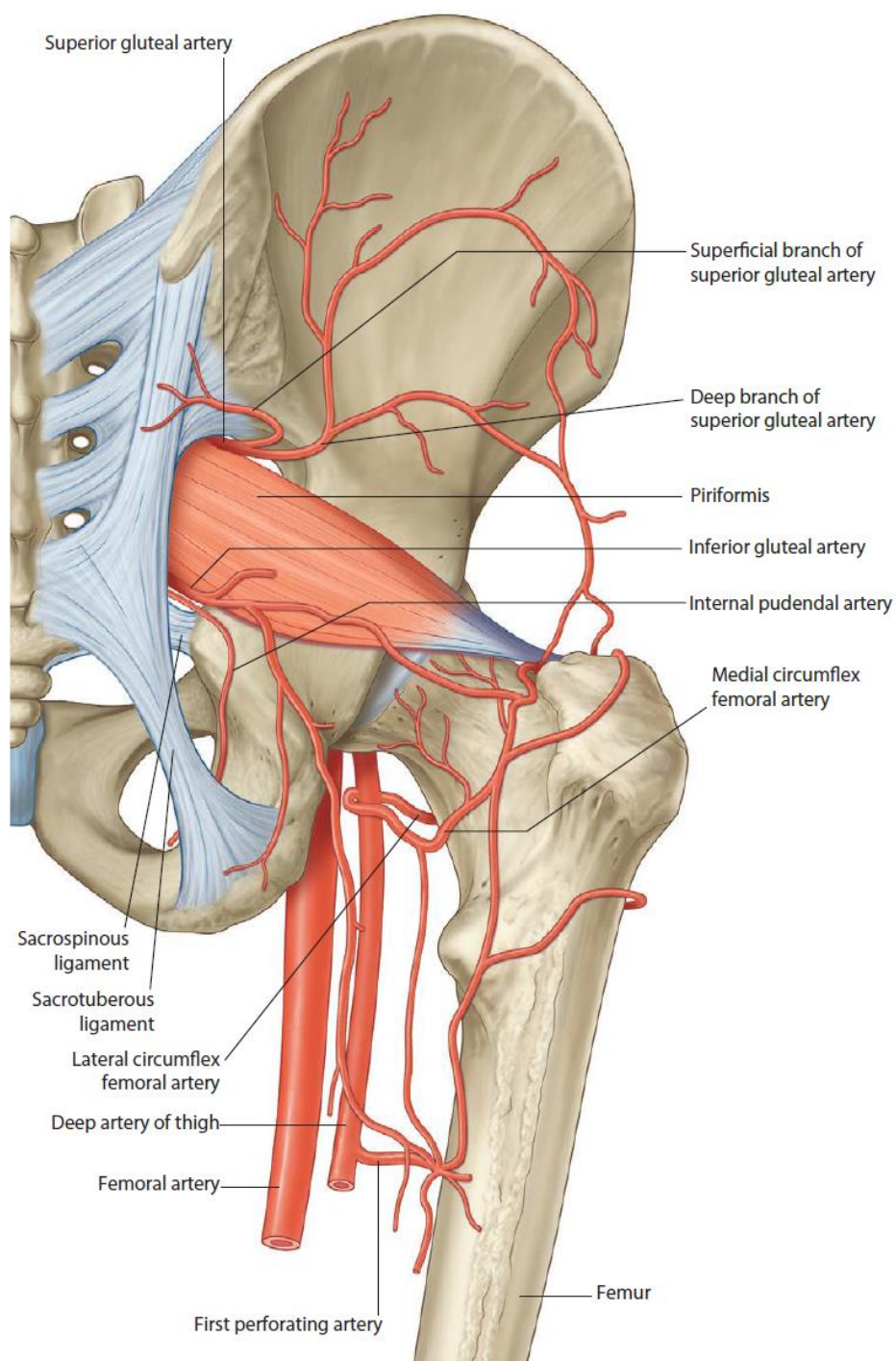
The Sacral Plexus

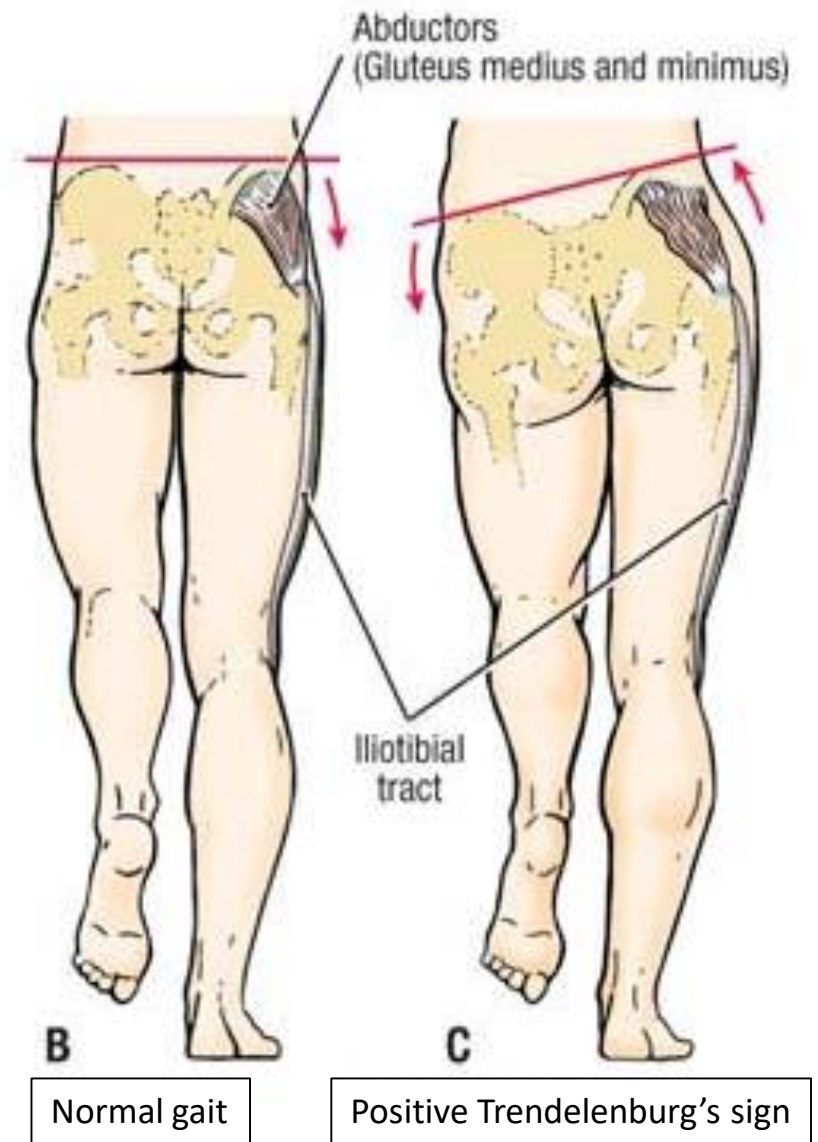
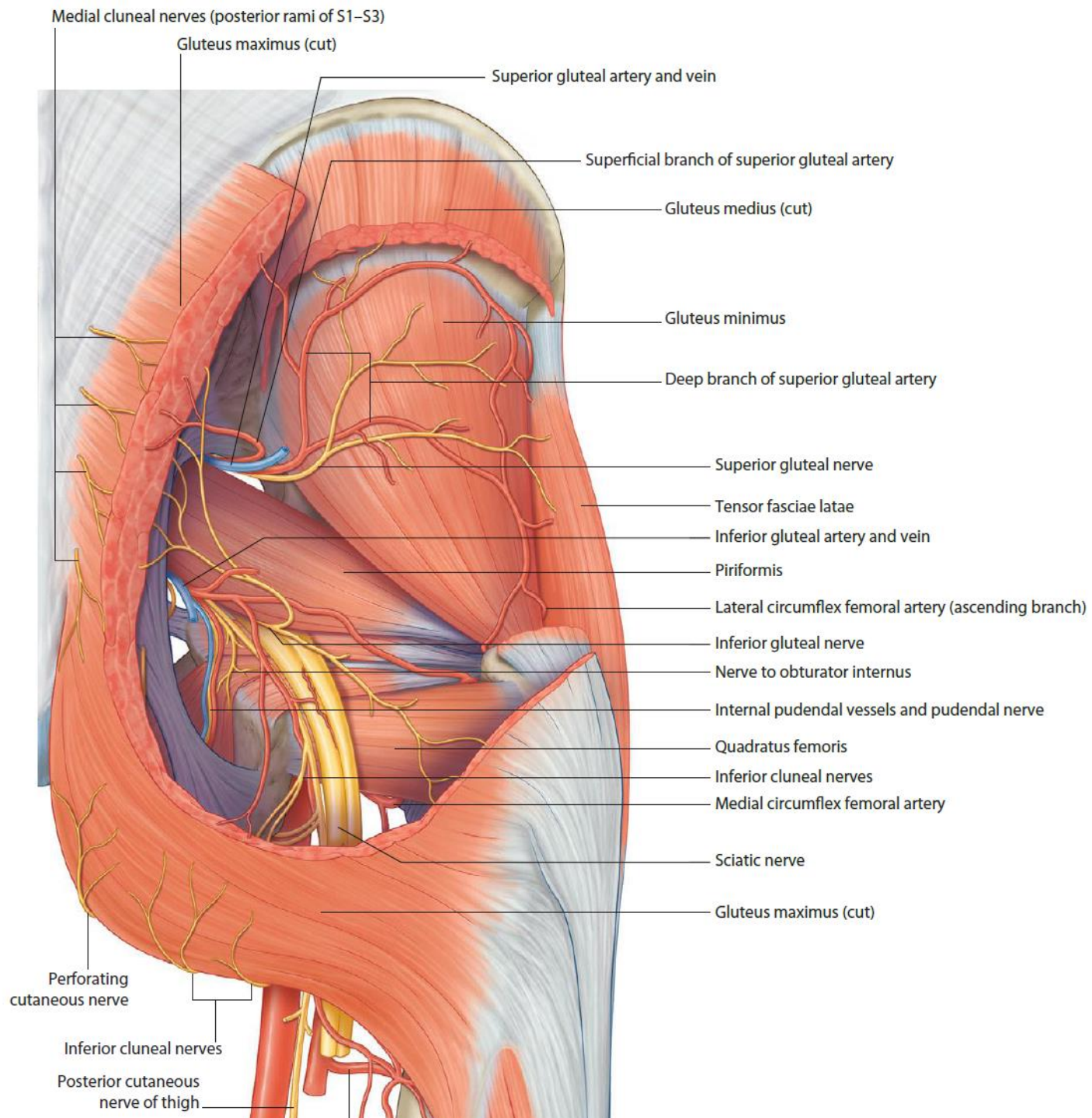
Source: Waxman SG: *Clinical Neuroanatomy: Twenty-Seventh Edition*.
 www.accessmedicine.com
 Copyright © The McGraw-Hill Companies, Inc. All rights reserved.

Cutaneous Innervation

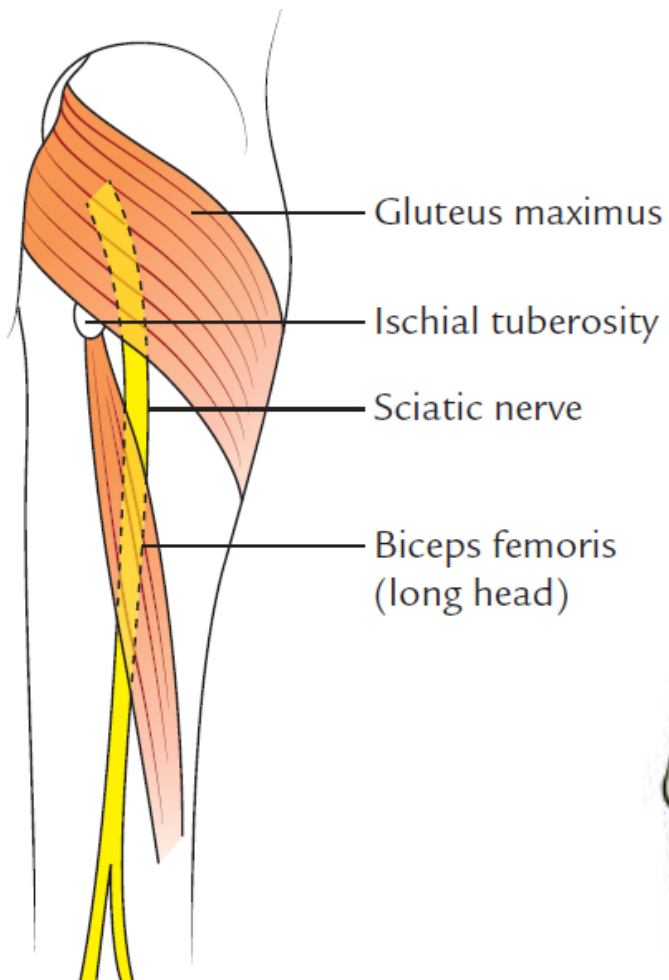




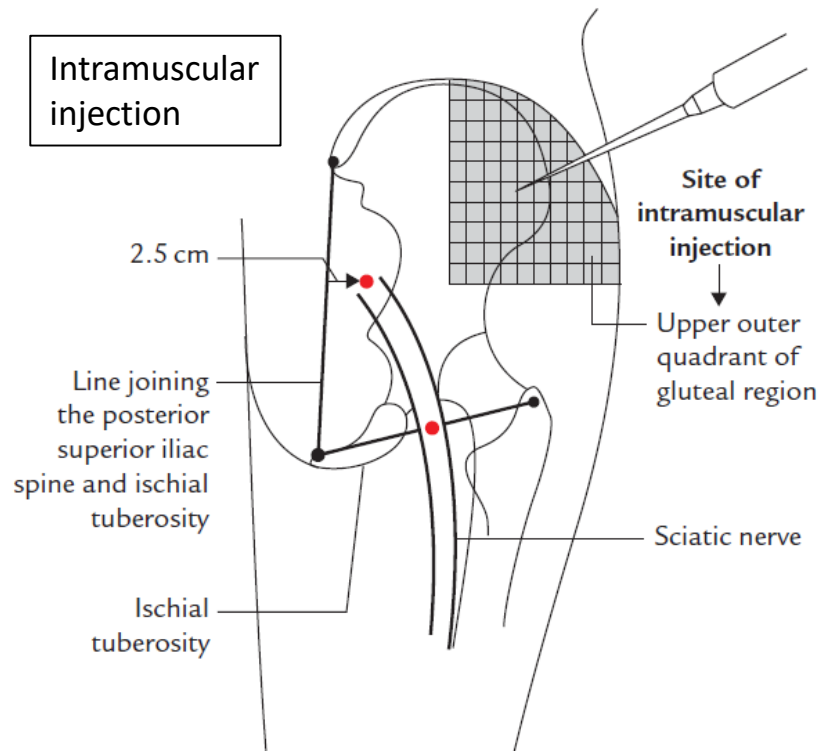




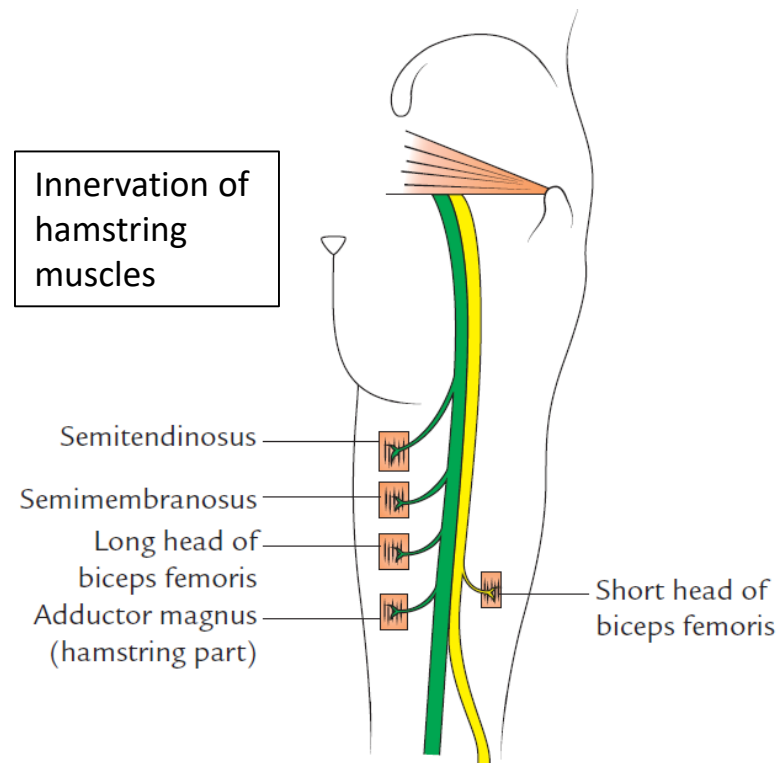
Surface anatomy of the sciatic nerve



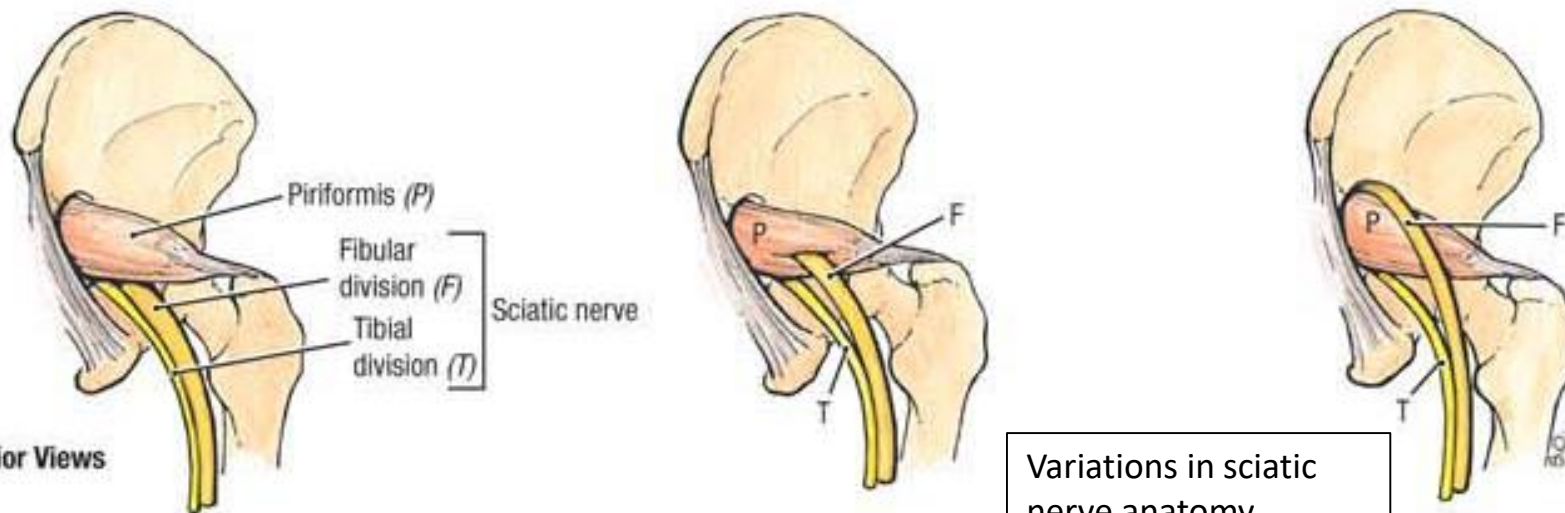
Intramuscular injection



Innervation of hamstring muscles

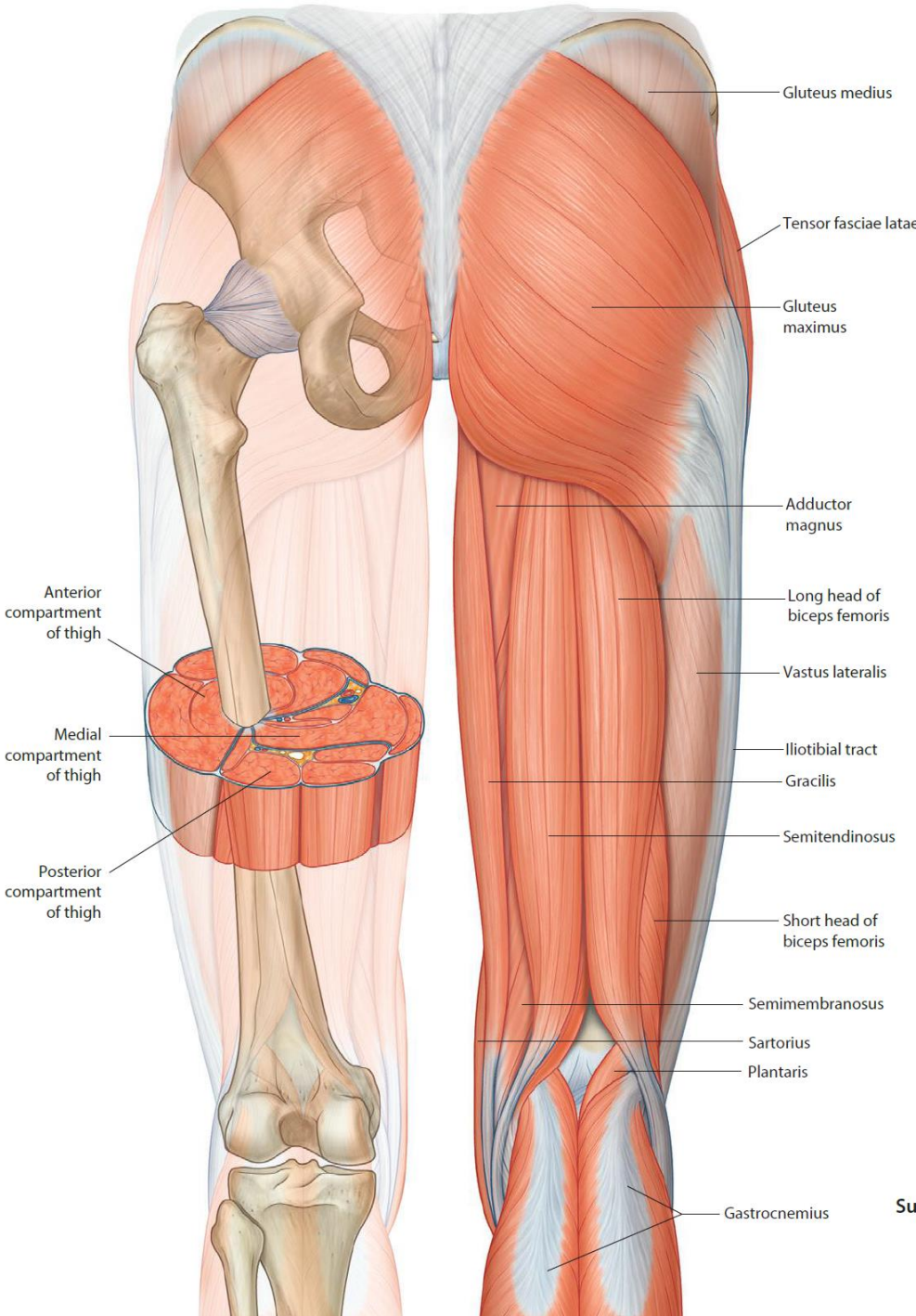
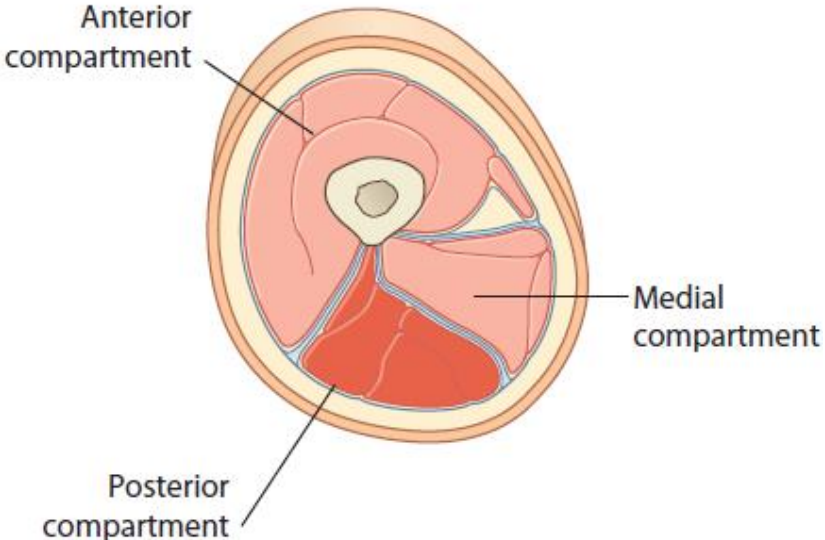


B. Posterior Views

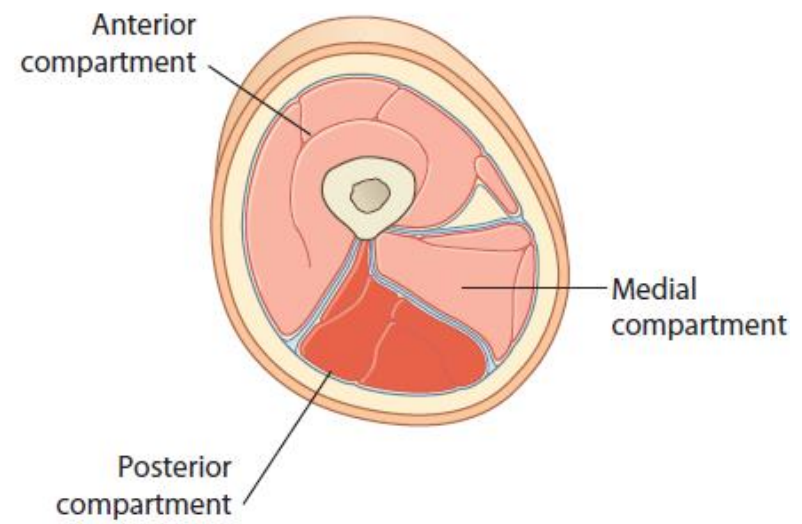
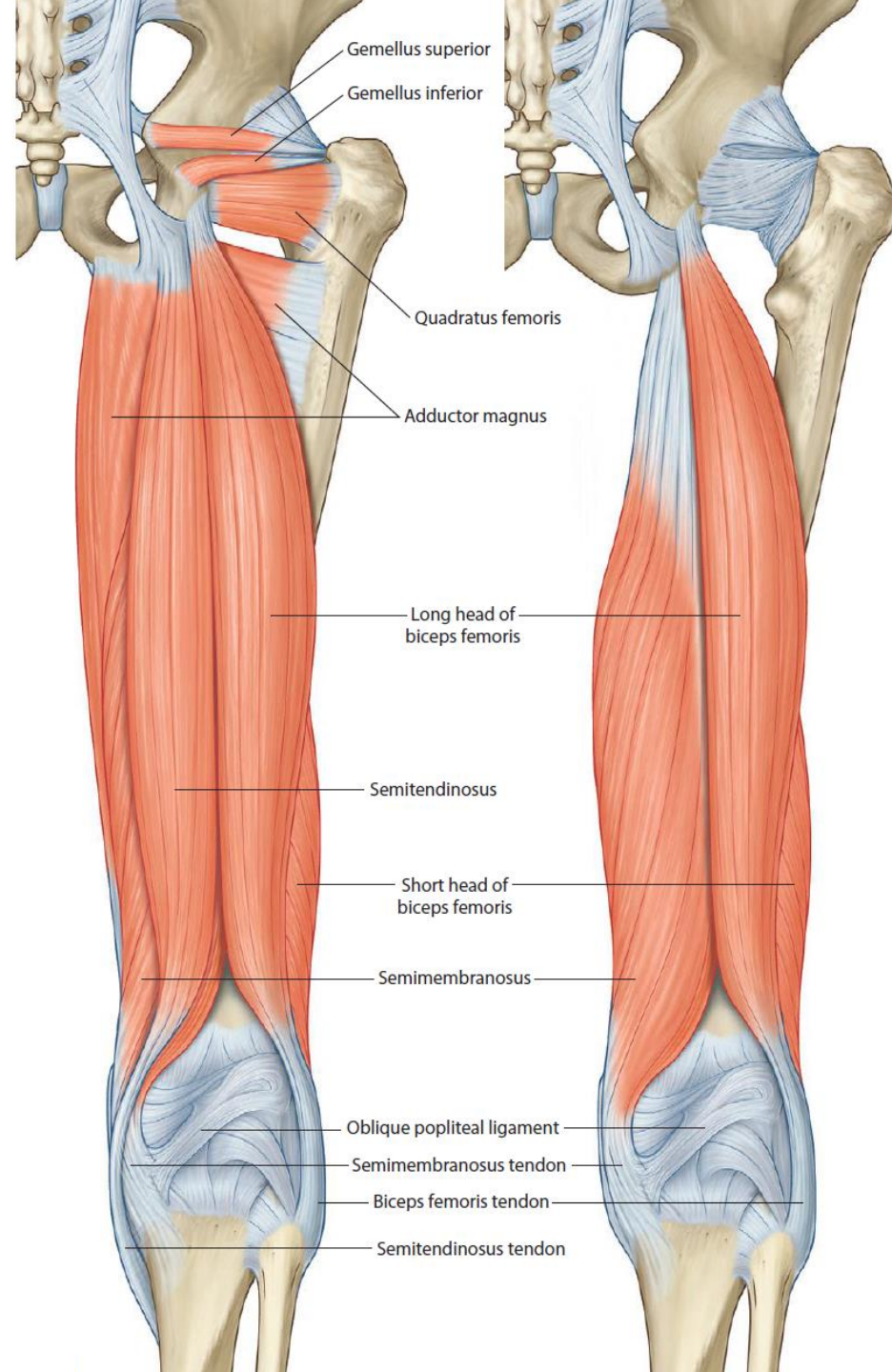
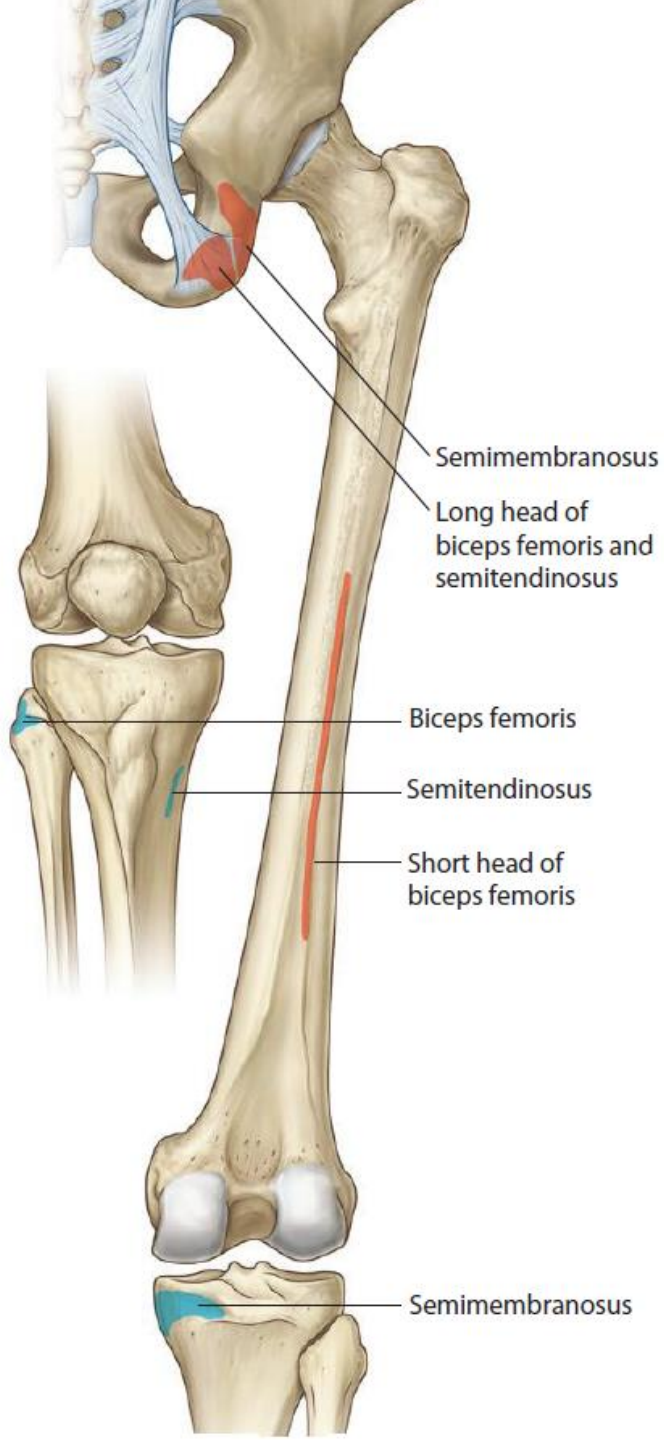


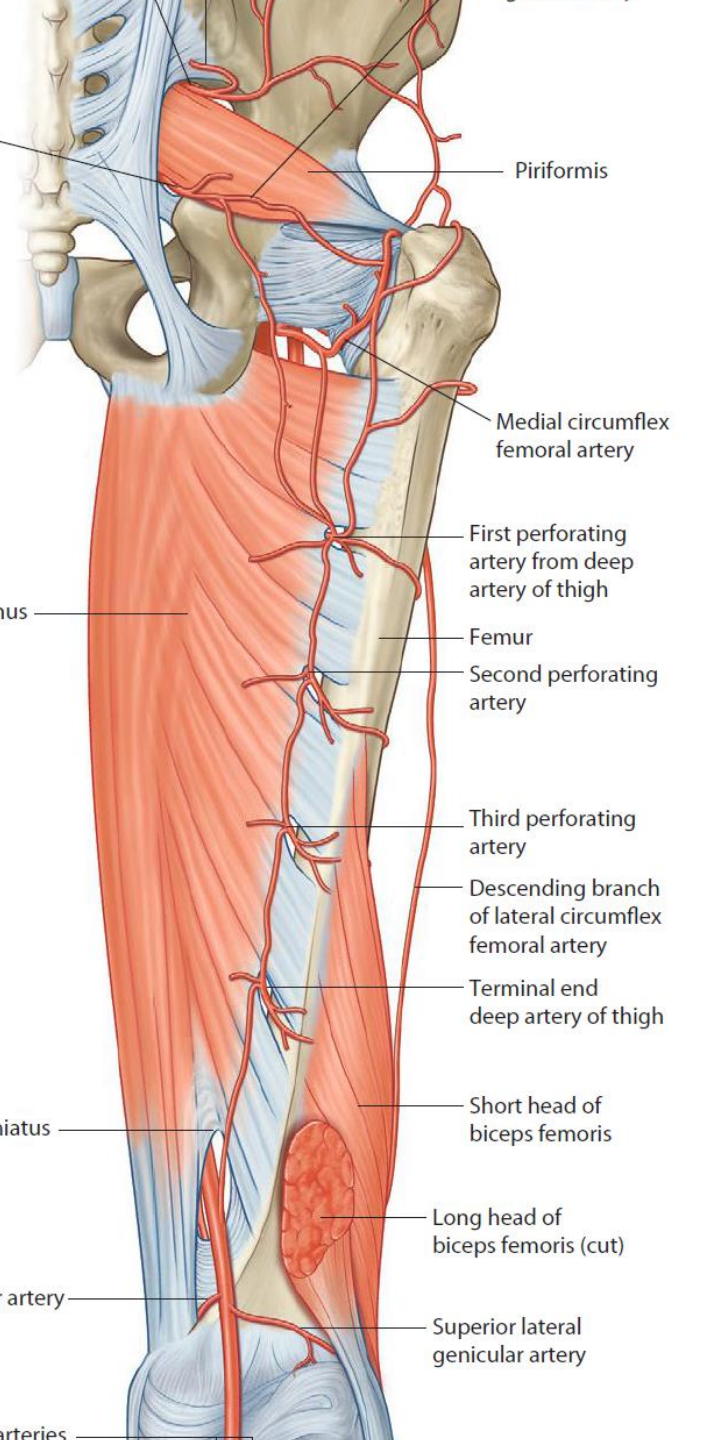
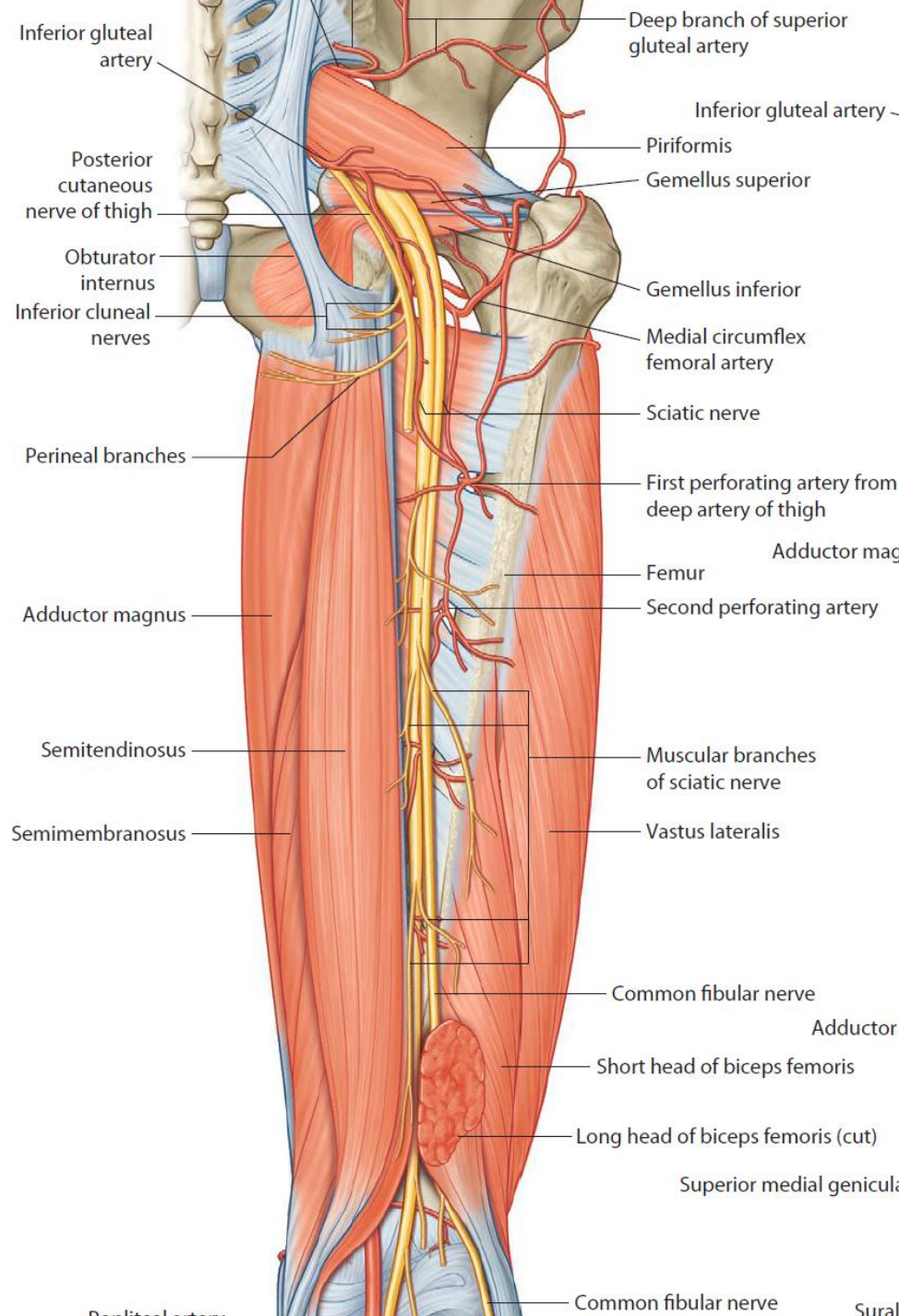
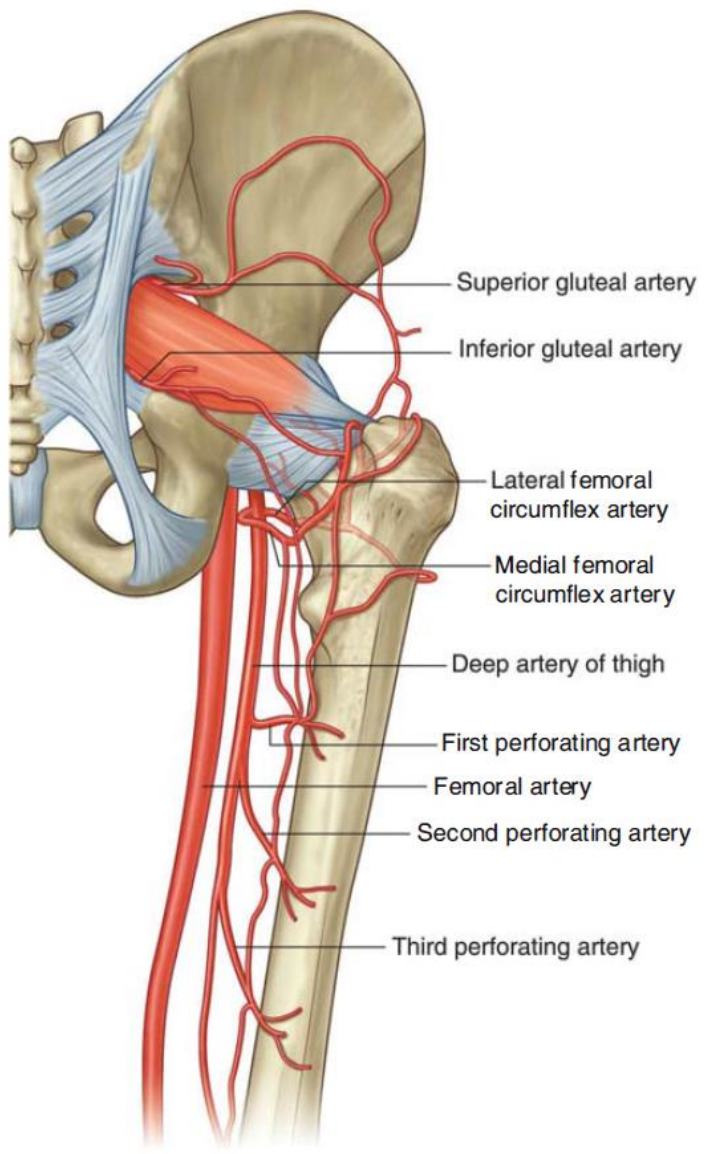
Variations in sciatic nerve anatomy

Posterior Compartment of the Thigh



Surface anatomy of lower limb with overlay of muscles (posterior view)

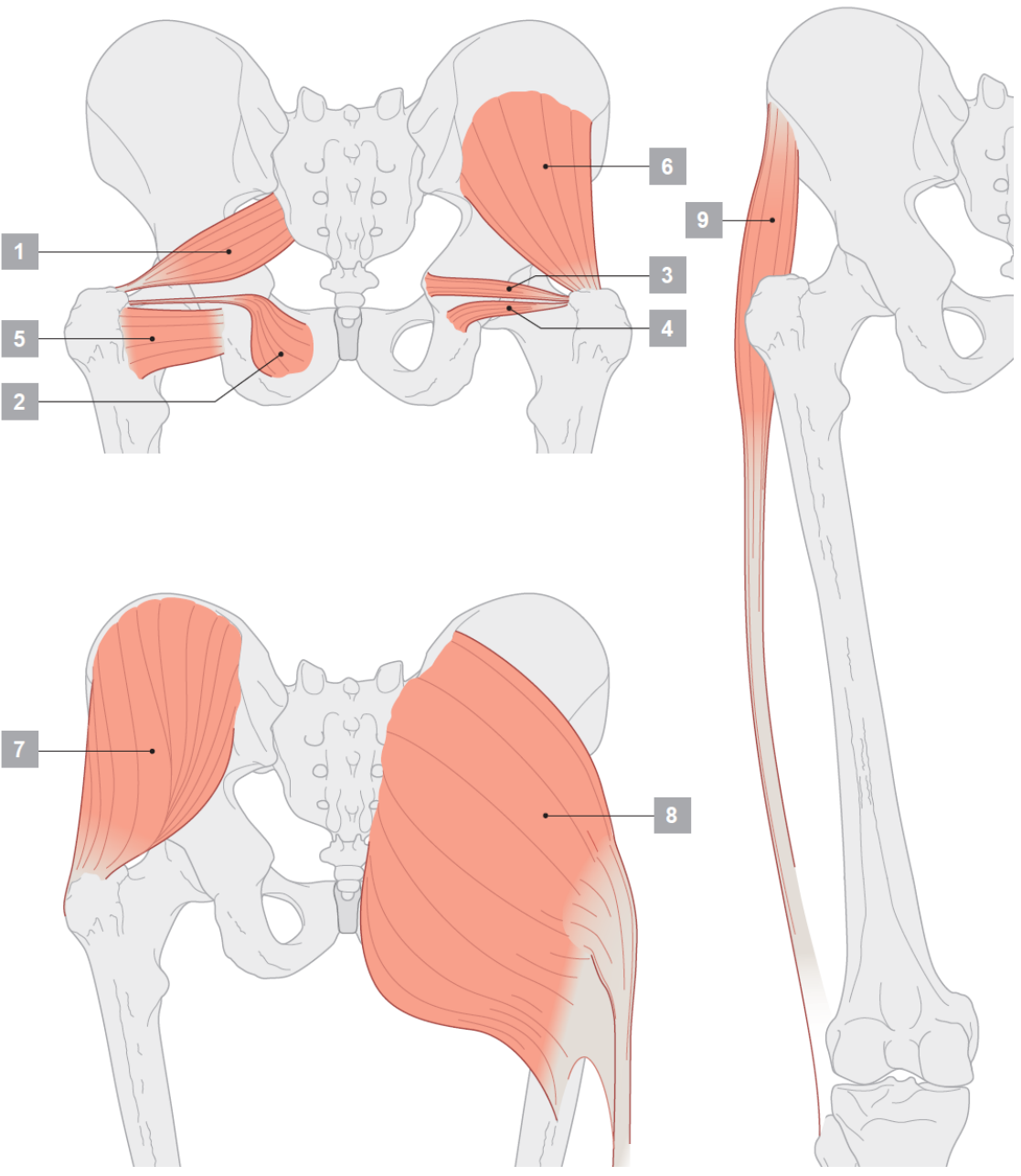




Muscles of the gluteal region

(spinal segments in bold are the major segments innervating the muscle)

Muscle	Origin	Insertion	Innervation	Function
Piriformis	1 Anterior surface of sacrum between anterior sacral foramina	Medial side of superior border of greater trochanter of femur	Branches from L5, S1, S2	Laterally rotates the extended femur at hip joint; abducts flexed femur at hip joint
Obturator internus	2 Anterolateral wall of true pelvis; deep surface of obturator membrane and surrounding bone	Medial side of greater trochanter of femur	Nerve to obturator internus (L5, S1)	Laterally rotates the extended femur at hip joint; abducts flexed femur at hip joint
Gemellus superior	3 External surface of ischial spine	Along length of superior surface of the obturator internus tendon and into the medial side of greater trochanter of femur with obturator internus tendon	Nerve to obturator internus (L5, S1)	Laterally rotates the extended femur at hip joint; abducts flexed femur at hip joint
Gemellus inferior	4 Upper aspect of ischial tuberosity	Along length of inferior surface of the obturator internus tendon and into the medial side of greater trochanter of femur with obturator internus tendon	Nerve to quadratus femoris (L5, S1)	Laterally rotates the extended femur at hip joint; abducts flexed femur at hip joint
Quadratus femoris	5 Lateral aspect of the ischium just anterior to the ischial tuberosity	Quadrate tubercle on the intertrochanteric crest of the proximal femur	Nerve to quadratus femoris (L5, S1)	Laterally rotates femur at hip joint
Gluteus minimus	6 External surface of ilium between inferior and anterior gluteal lines	Linear facet on the anterolateral aspect of the greater trochanter	Superior gluteal nerve (L4, L5, S1)	Abducts femur at hip joint; holds pelvis secure over stance leg and prevents pelvic drop on the opposite swing side during walking; medially rotates thigh
Gluteus medius	7 External surface of ilium between anterior and posterior gluteal lines	Elongate facet on the lateral surface of the greater trochanter	Superior gluteal nerve (L4, L5, S1)	Abducts femur at hip joint; holds pelvis secure over stance leg and prevents pelvic drop on the opposite swing side during walking; medially rotates thigh
Gluteus maximus	8 Fascia covering gluteus medius; external surface of ilium behind posterior gluteal line; fascia of erector spinae, dorsal surface of lower sacrum; lateral margin of coccyx; external surface of sacrotuberous ligament	Posterior aspect of iliothibial tract of fascia lata and gluteal tuberosity of proximal femur	Inferior gluteal nerve (L5, S1, S2)	Powerful extensor of flexed femur at hip joint; lateral stabilizer of hip joint and knee joint; laterally rotates and abducts thigh
Tensor fasciae latae	9 Lateral aspect of crest of ilium between anterior superior iliac spine and tubercle of the crest	Ilioibtibial tract of fascia lata	Superior gluteal nerve (L4, L5, S1)	Stabilizes the knee in extension



Muscles of the posterior compartment of thigh

(spinal segments in bold are the major segments innervating the muscle)

Muscle	Origin	Insertion	Innervation	Function
Biceps femoris	1 Long head—inferomedial part of the upper area of the ischial tuberosity; short head—lateral lip of linea aspera	Head of fibula	Sciatic nerve [L5, S1 , S2]	Flexes leg at knee joint; extends and laterally rotates thigh at hip joint and laterally rotates leg at knee joint
Semitendinosus	2 Inferomedial part of the upper area of the ischial tuberosity	Medial surface of proximal tibia	Sciatic nerve [L5, S1 , S2]	Flexes leg at knee joint and extends thigh at hip joint; medially rotates thigh at hip joint and leg at knee joint
Semimembranosus	3 Superolateral impression on the ischial tuberosity	Groove and adjacent bone on medial and posterior surface of medial tibial condyle	Sciatic nerve [L5, S1 , S2]	Flexes leg at knee joint and extends thigh at hip joint; medially rotates thigh at hip joint and leg at knee joint

