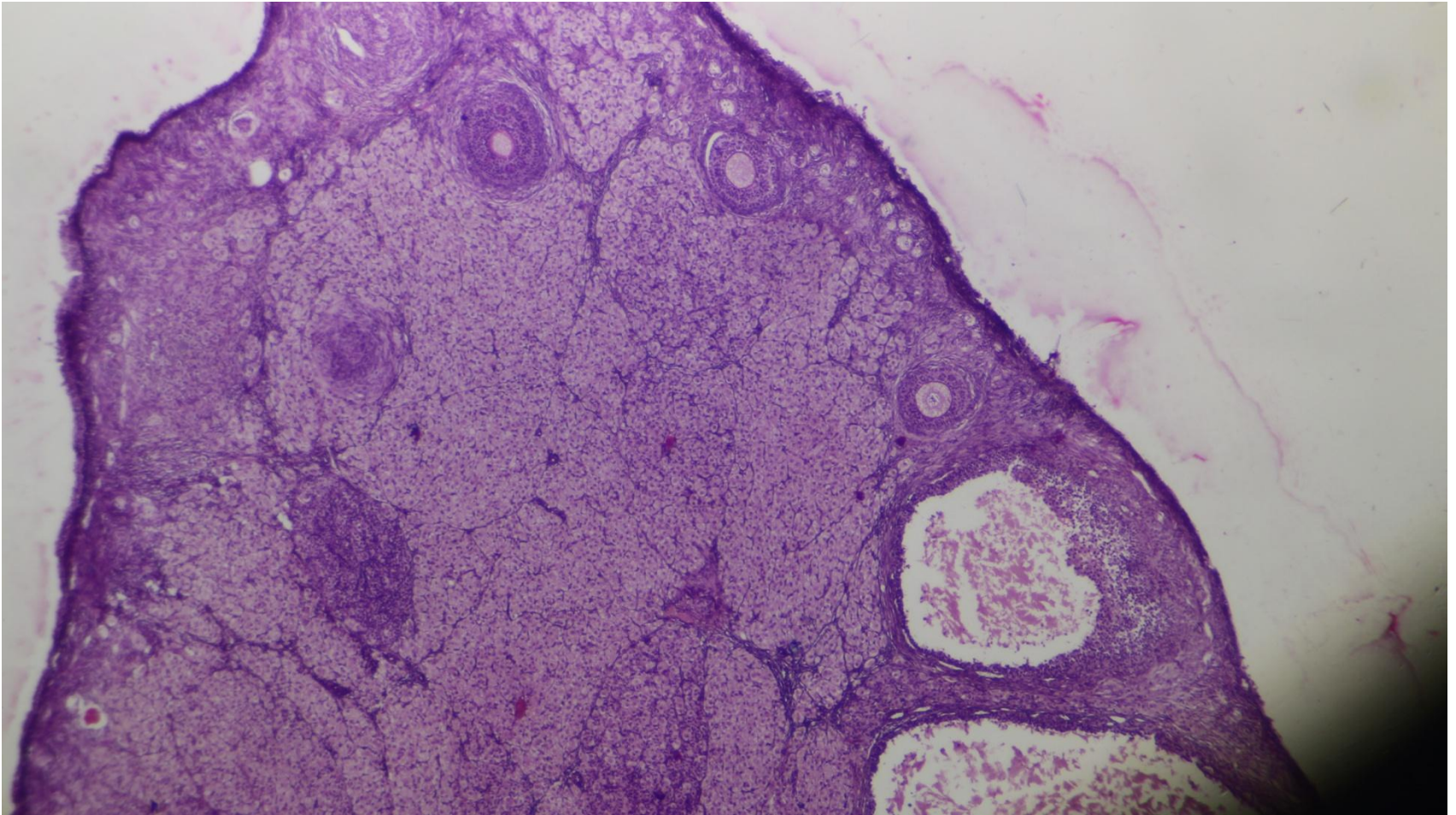
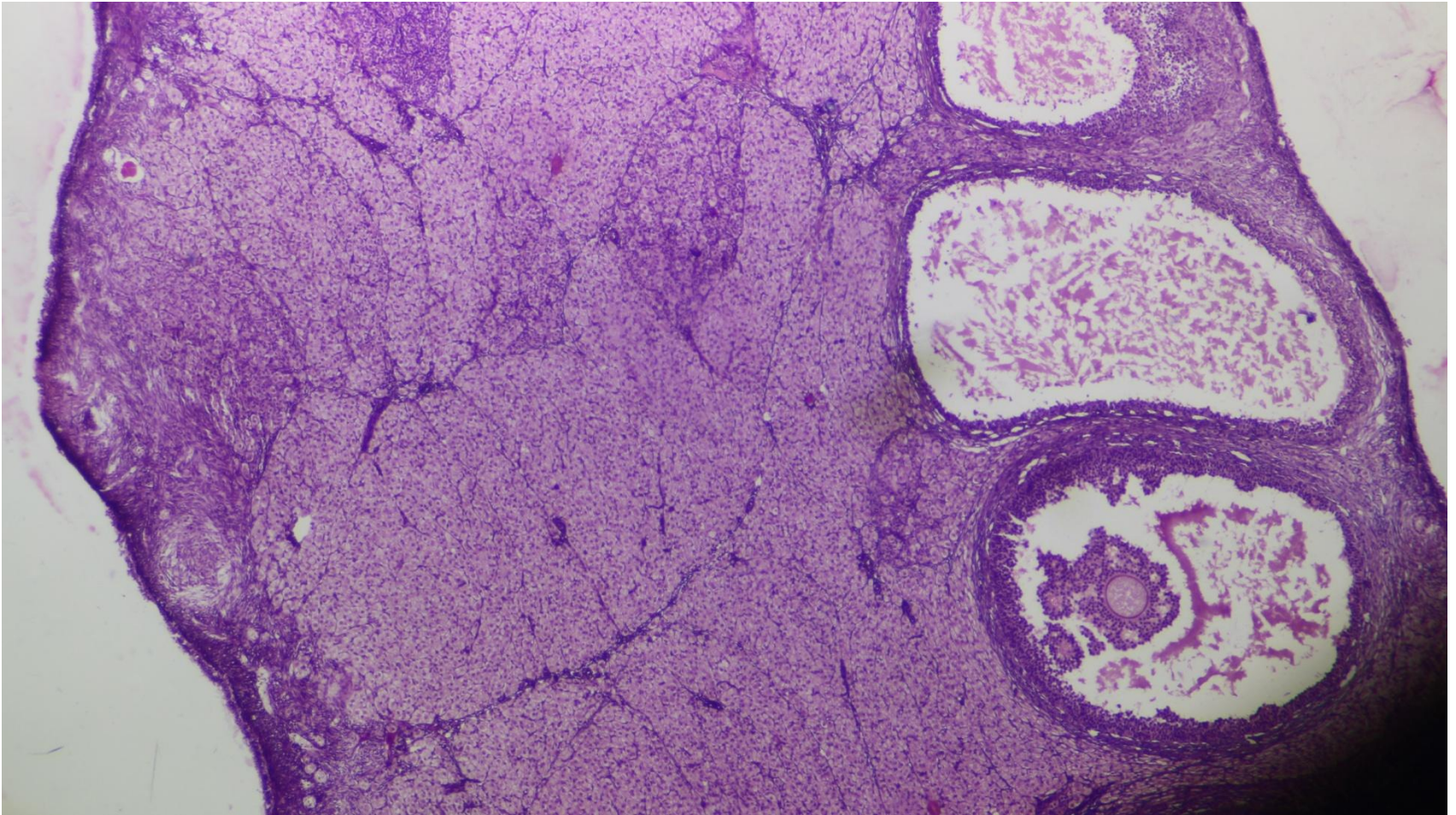


Female reproductive system

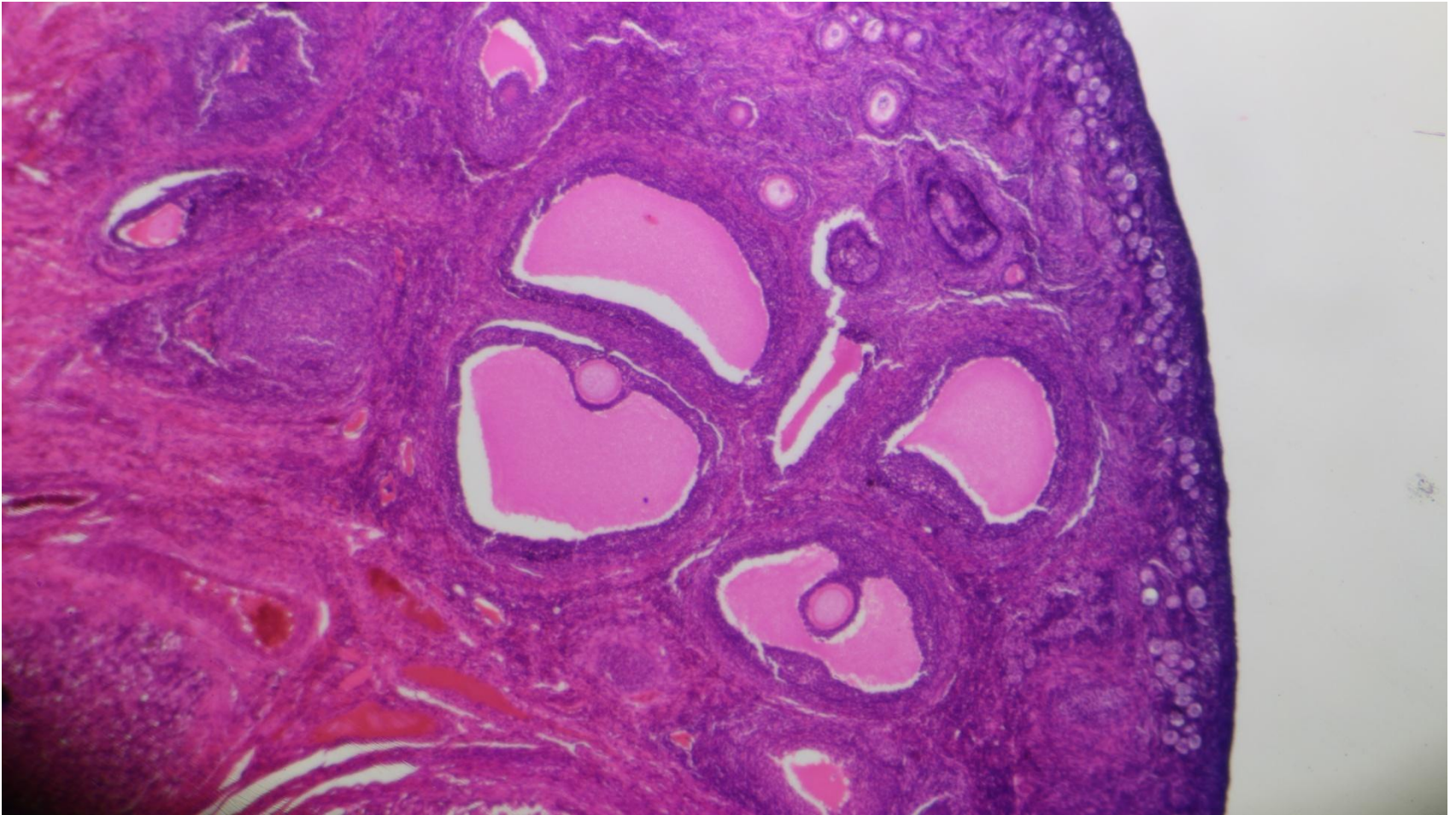
Ovary



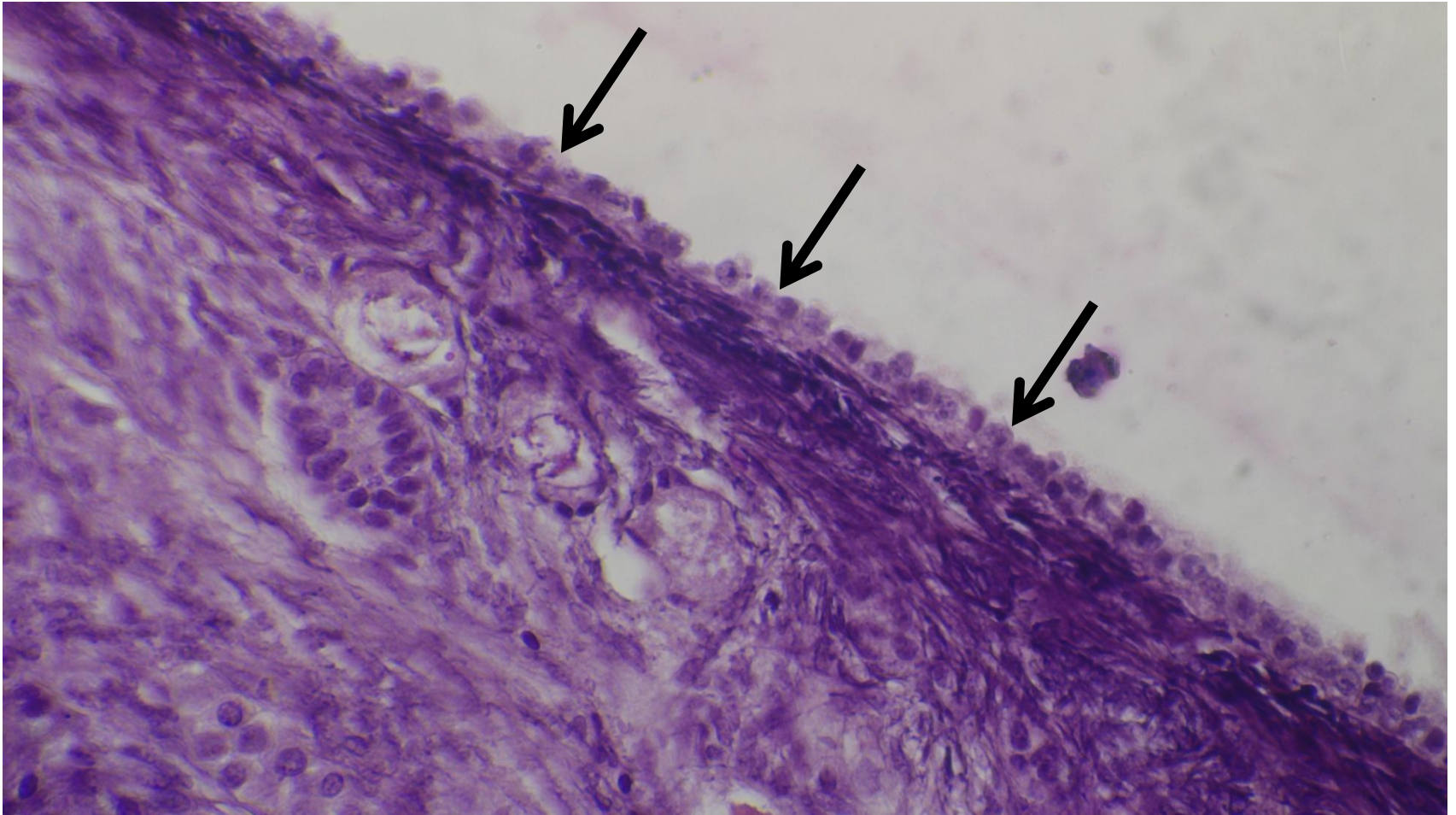
Ovary



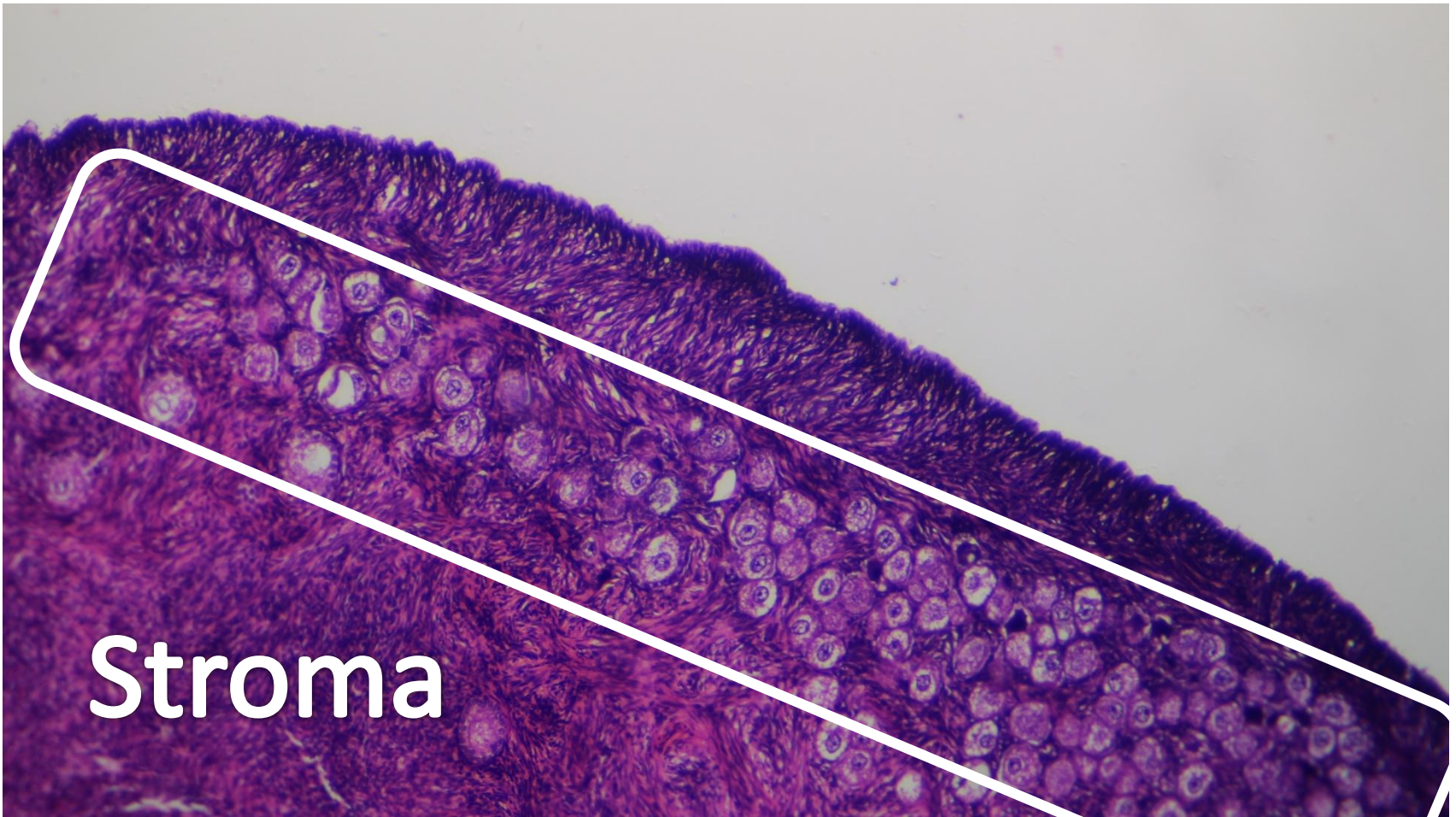
Ovary



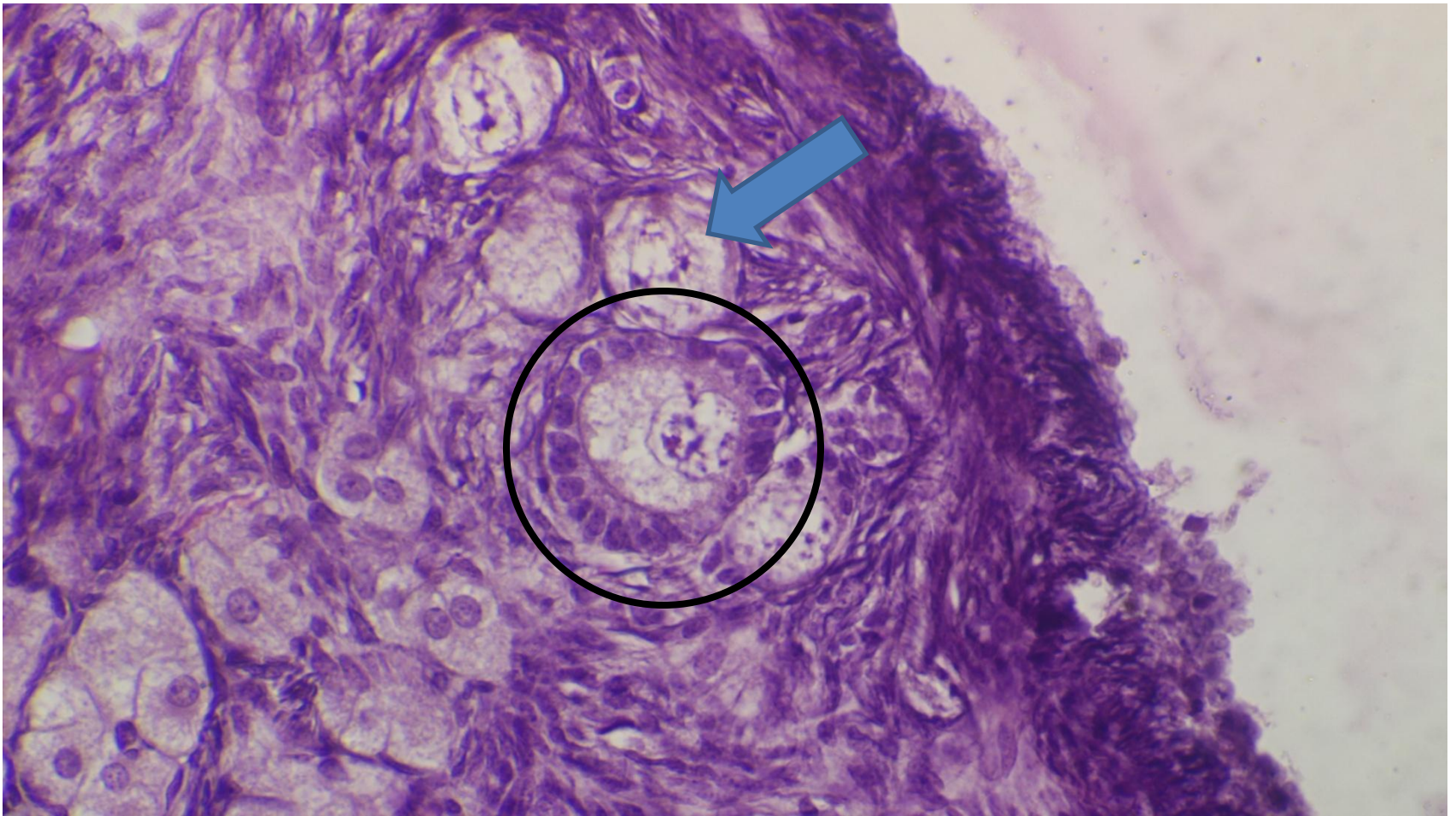
Germinal epithelium



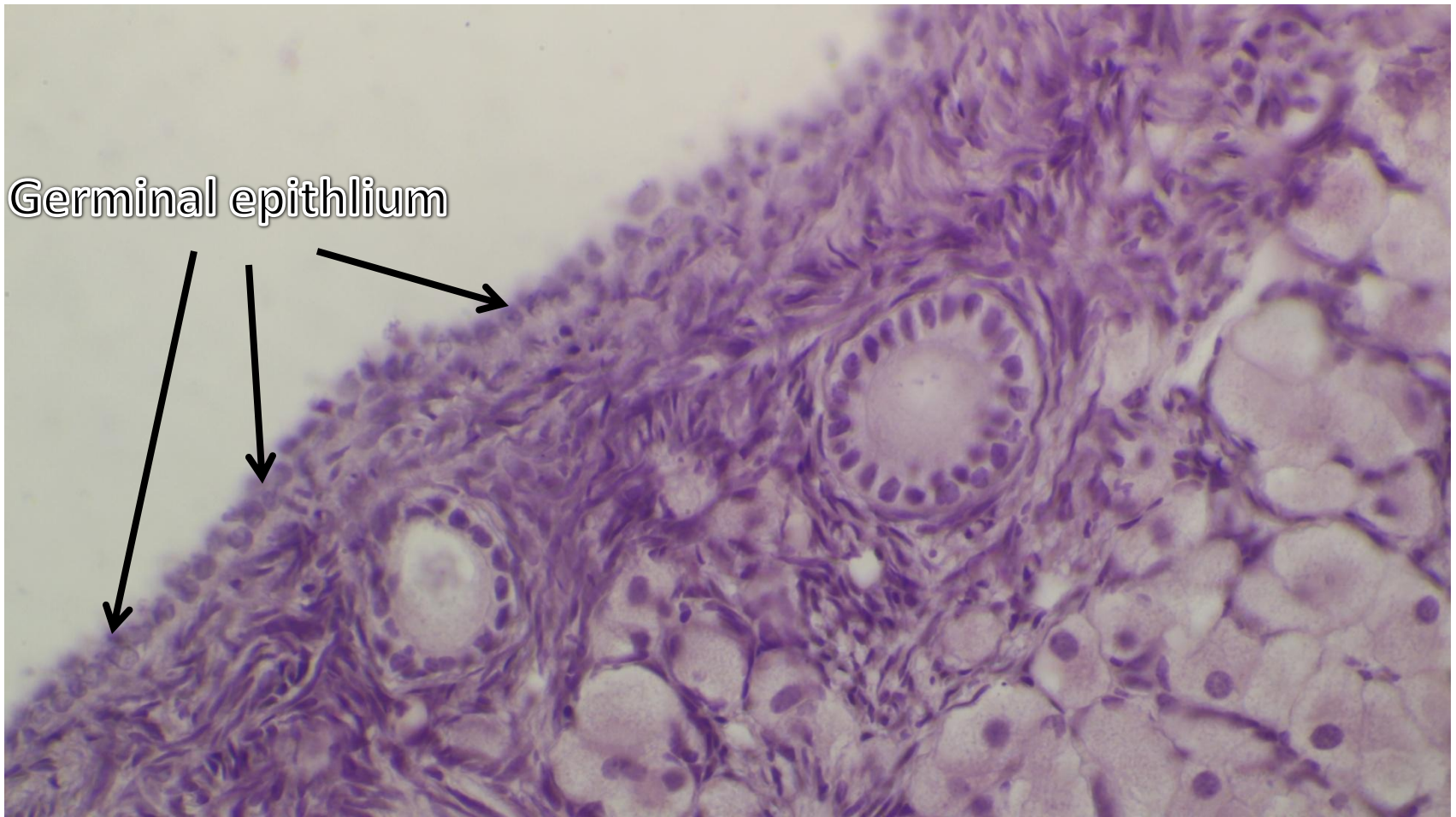
Primordial follicles



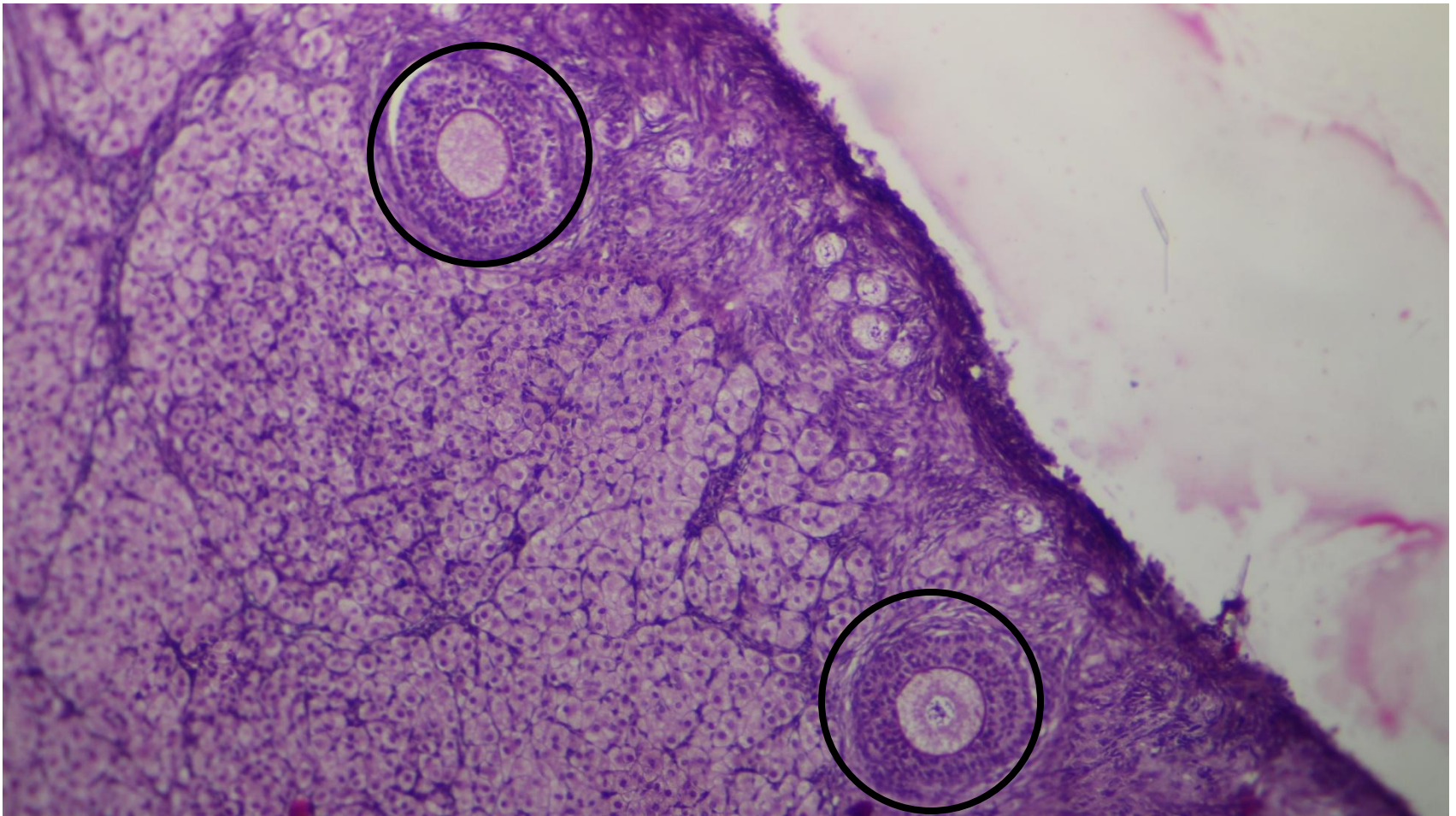
Primary follicle (Unilaminar) & primordial follicle (blue arrow)



Unilaminar primary follicle



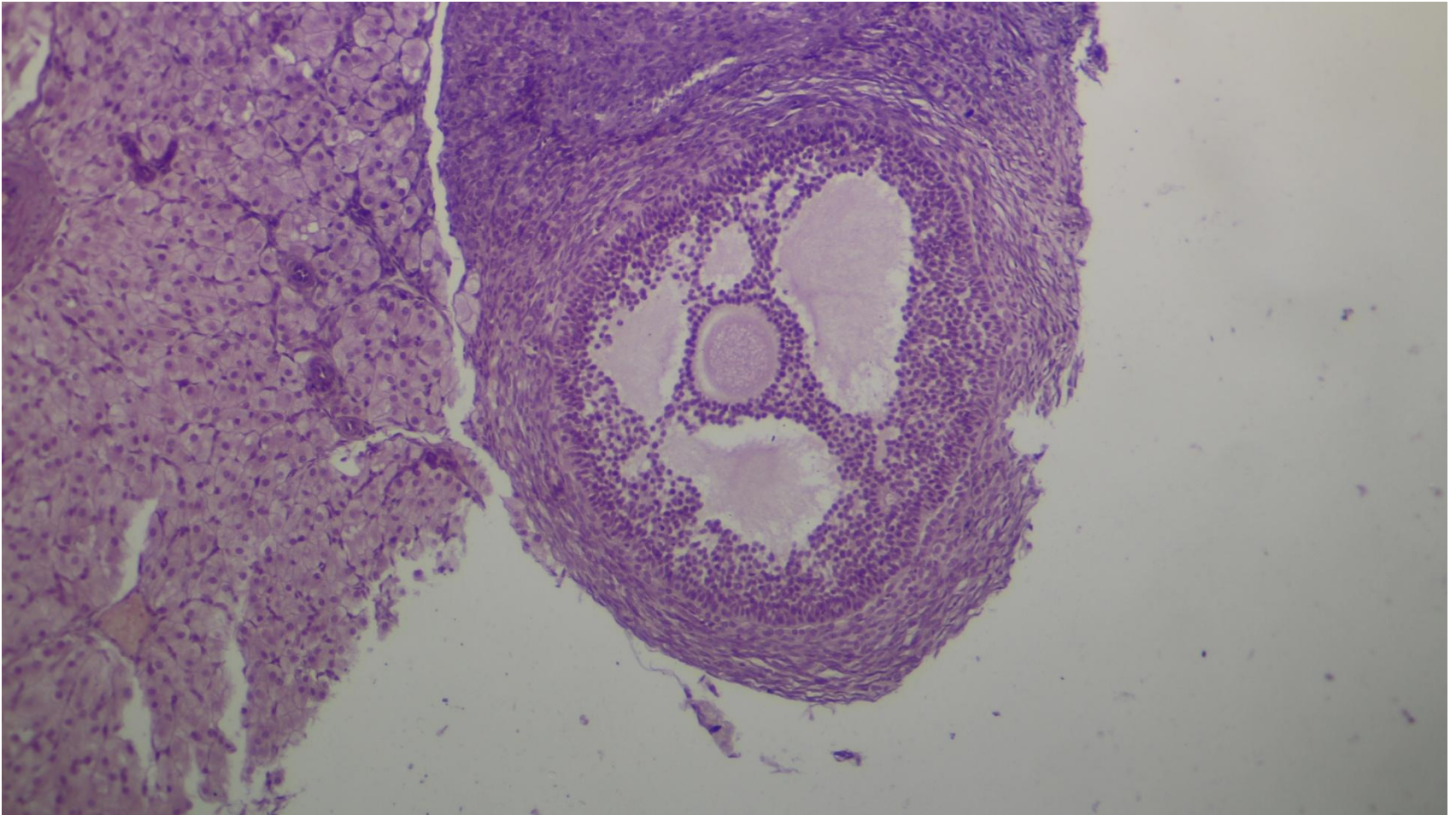
Primordial follicle (PF) & multilaminar Follicle



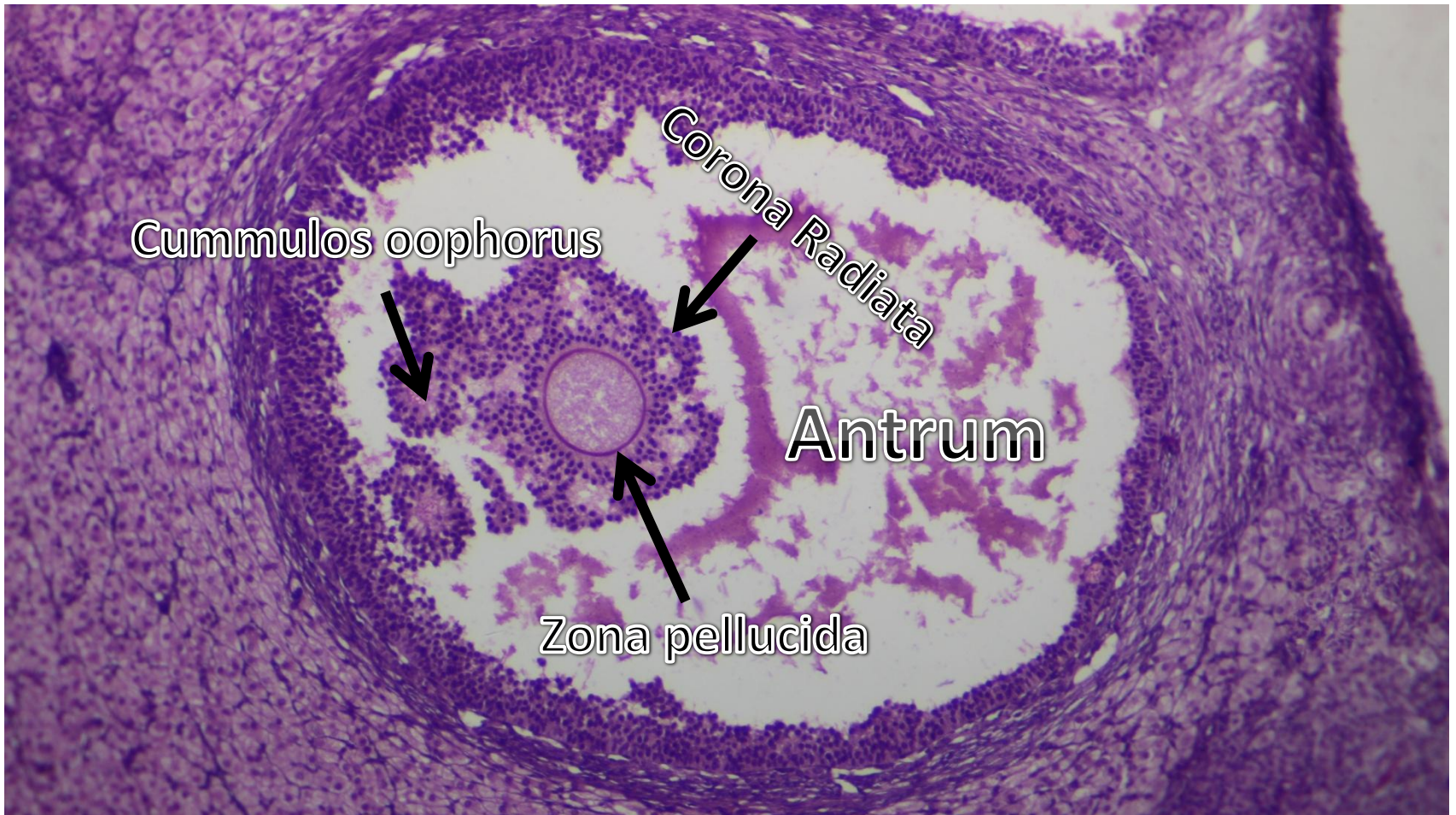
Multilaminar primary follicle



Antral (secondary) follicle

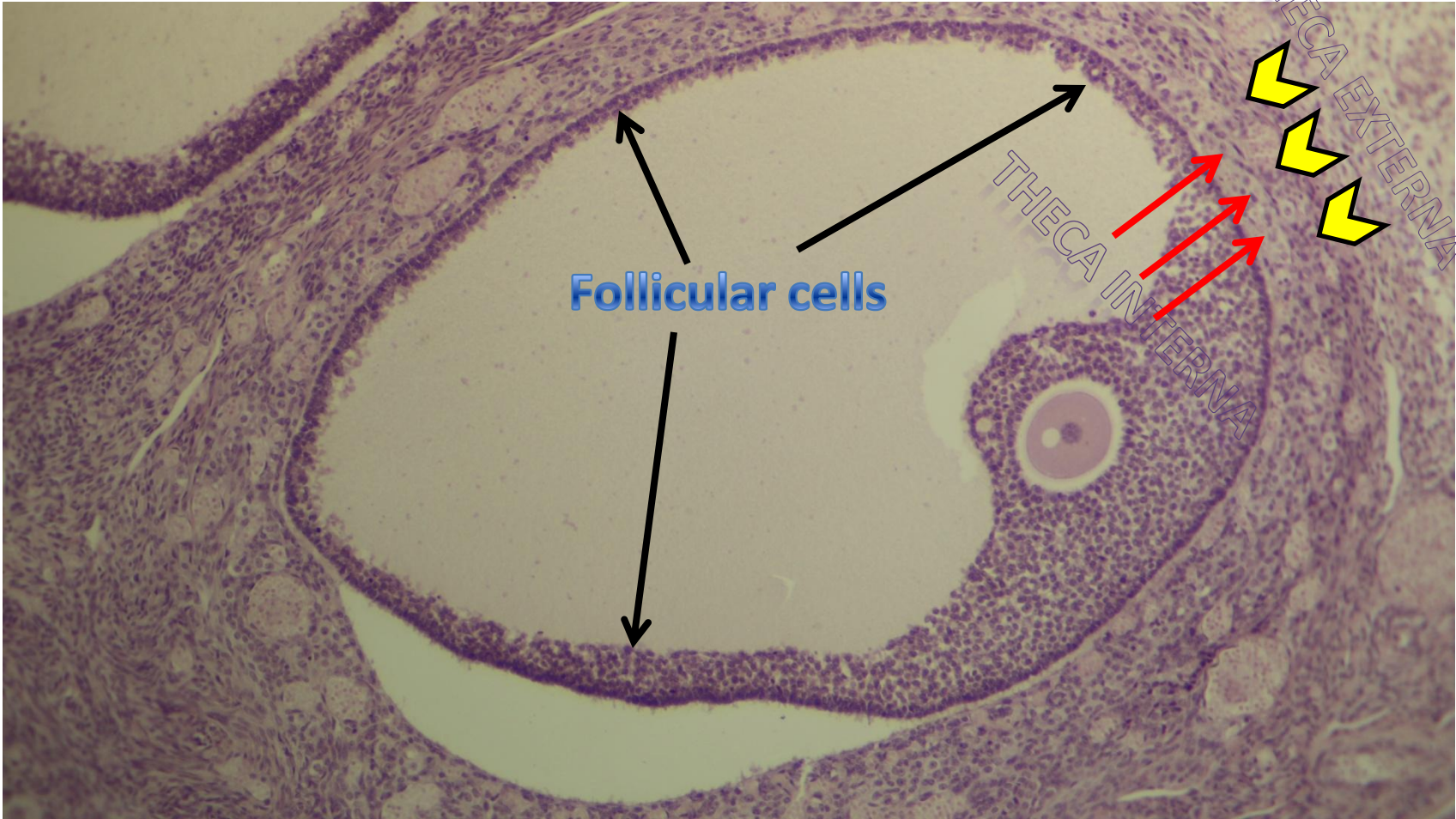


Mature follicle

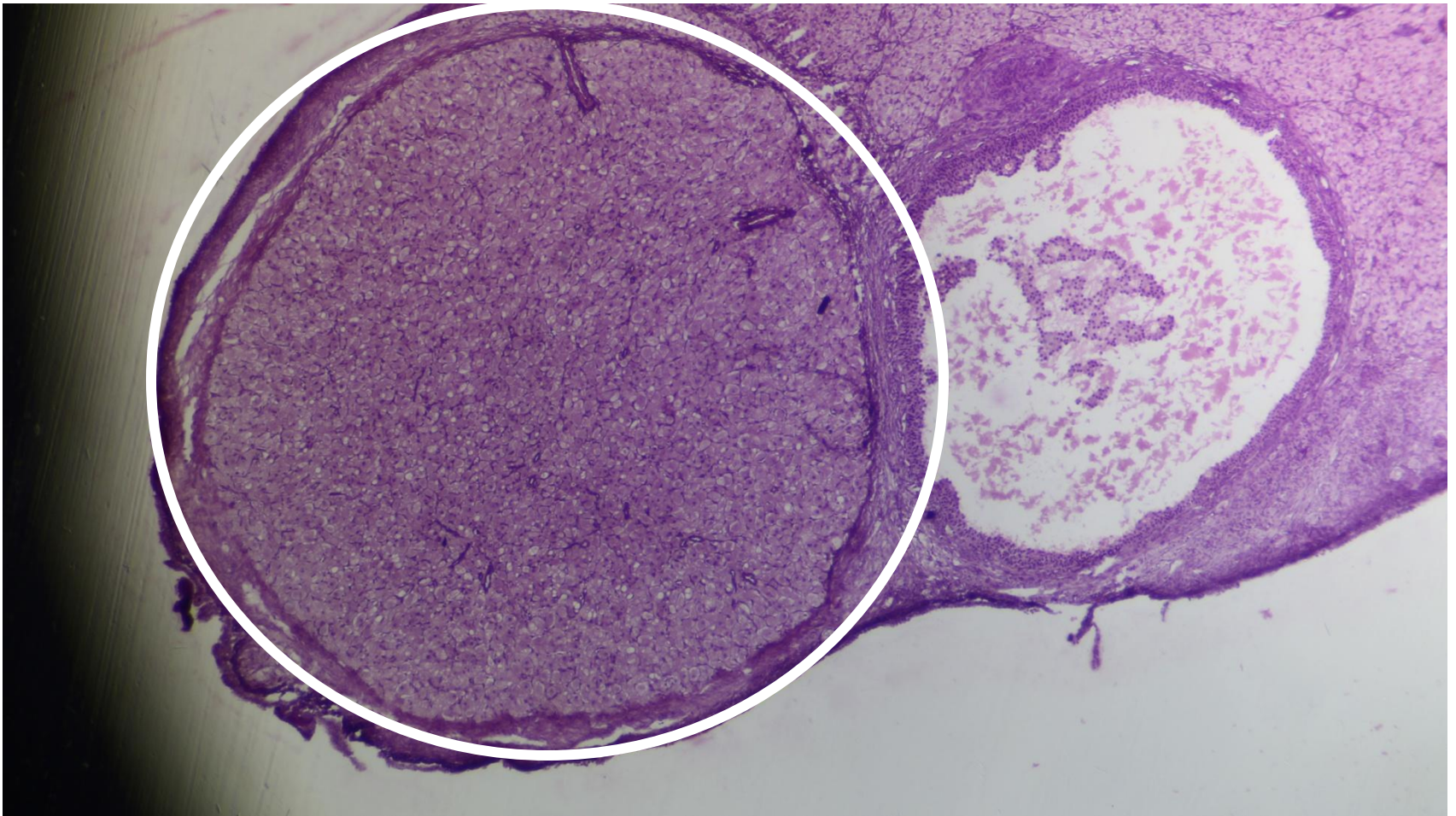


Mature follicle

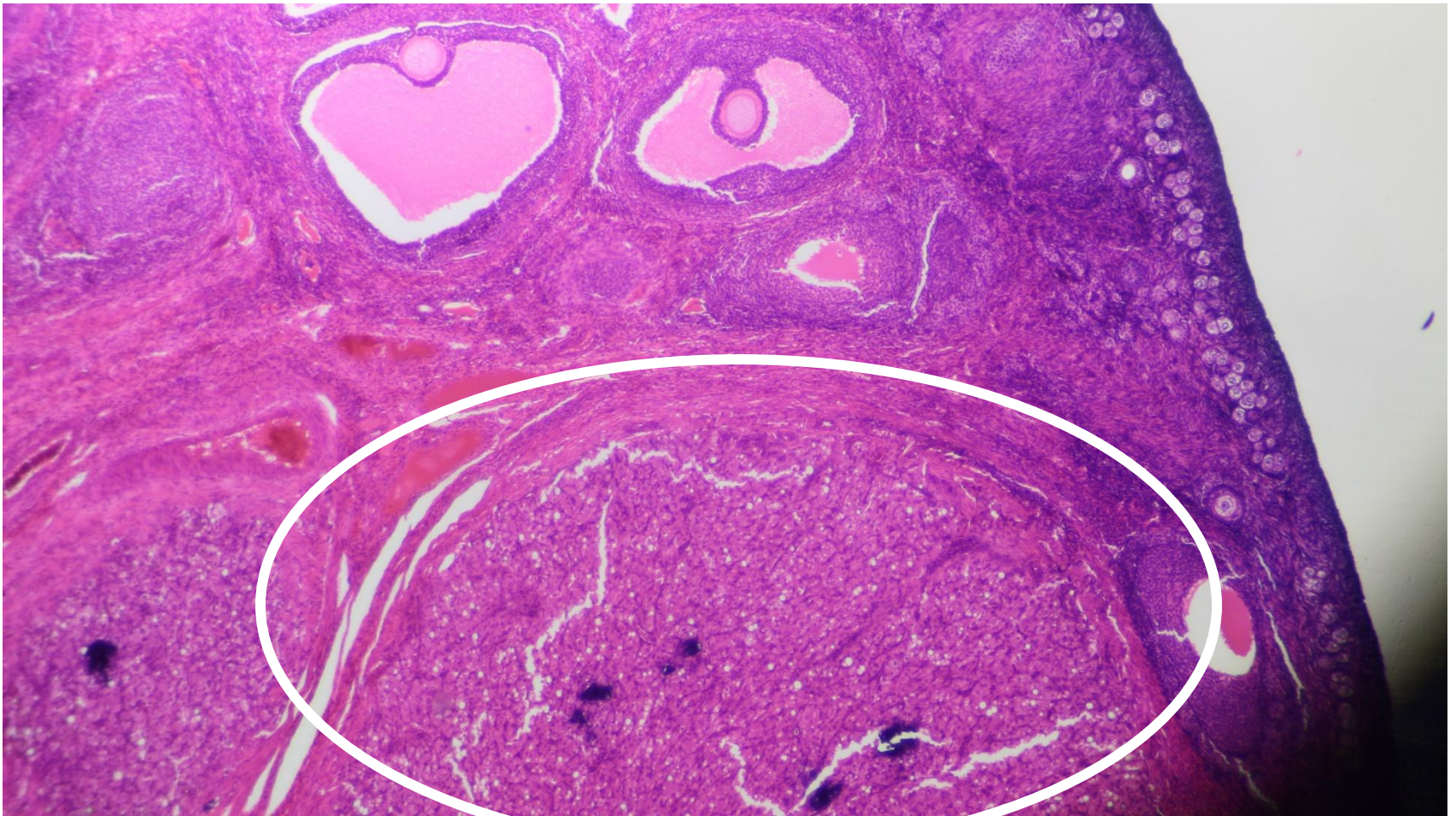




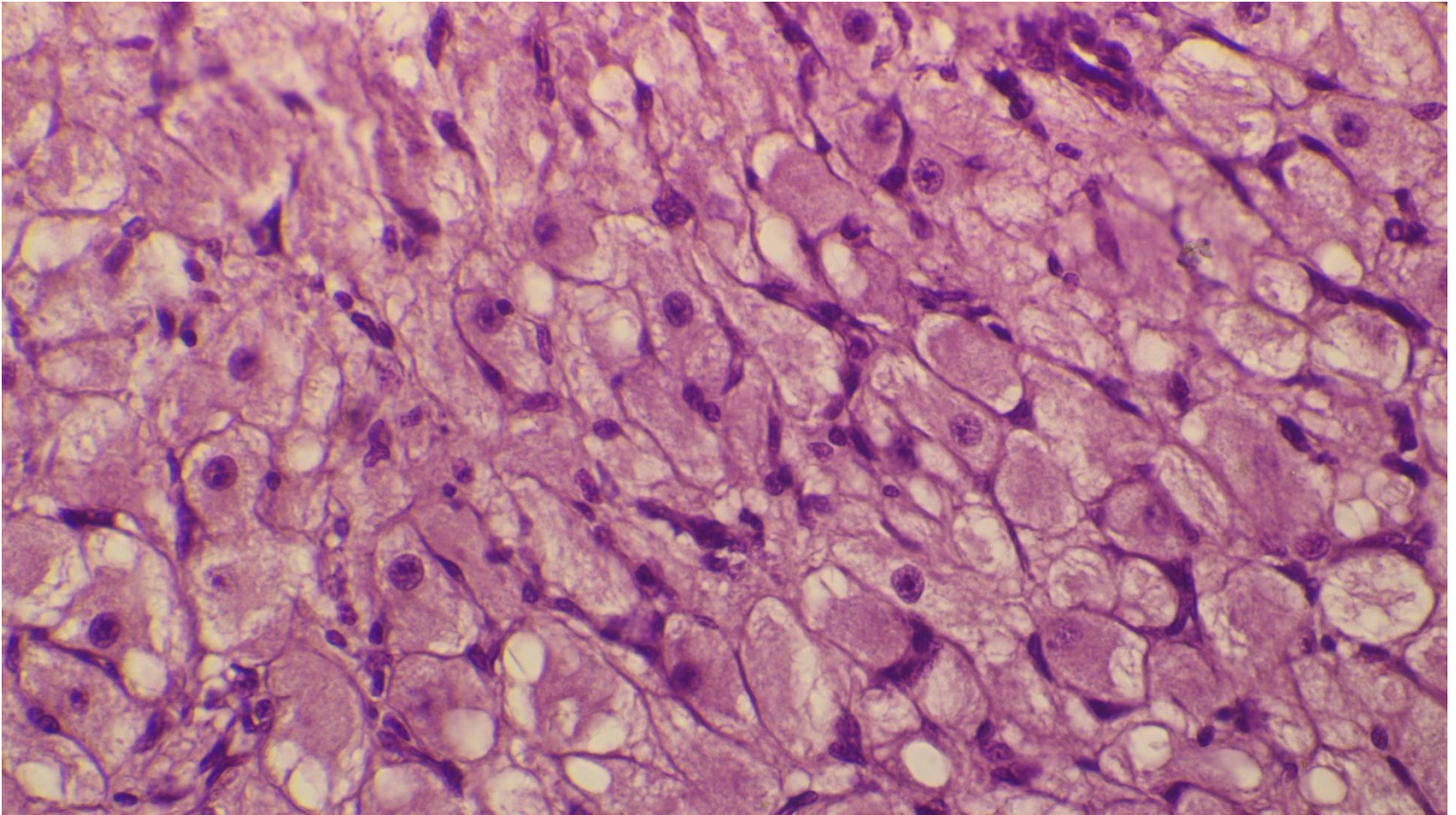
Corpus luteum (yellow body)



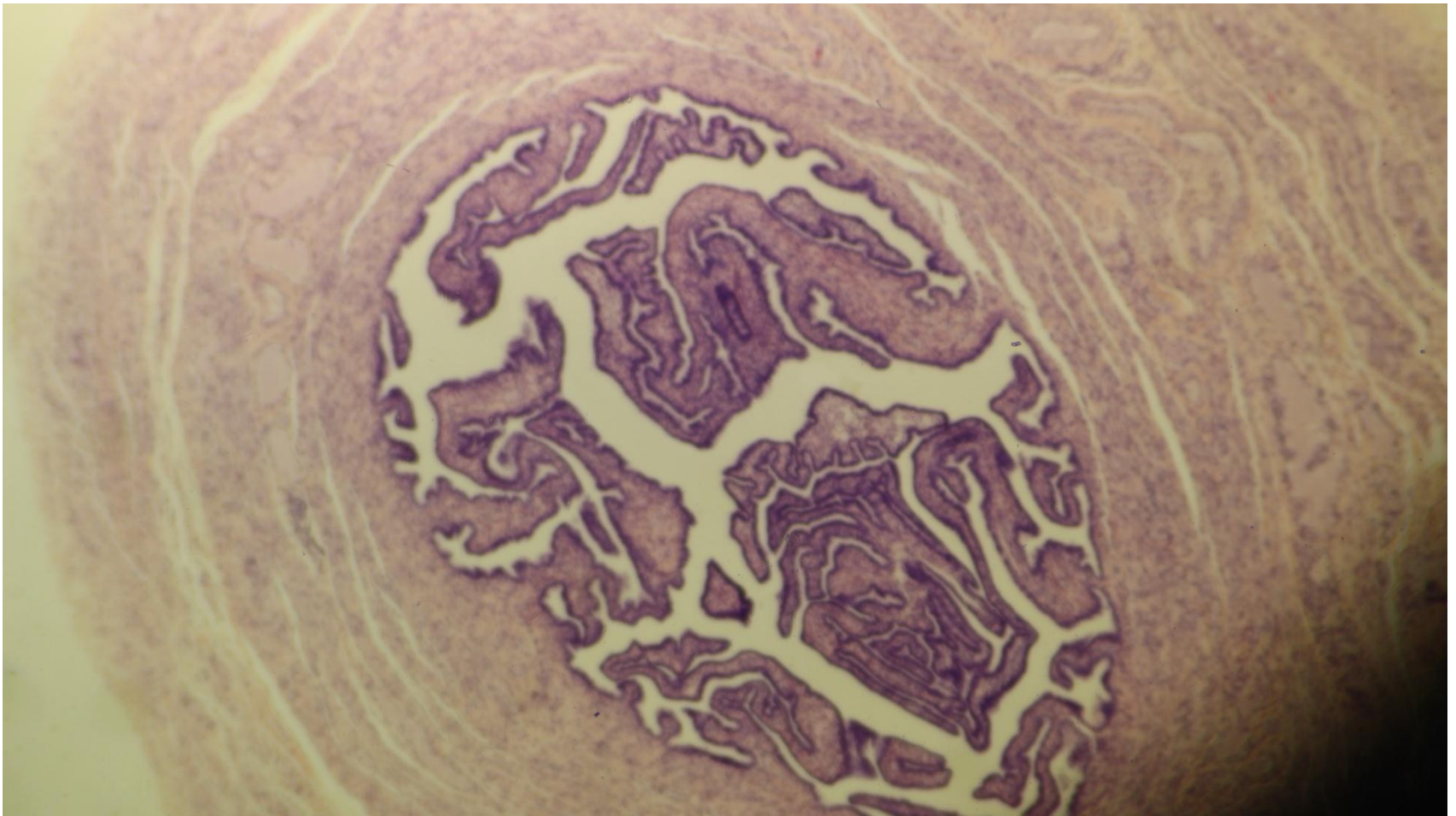
Corpus luteum (yellow body)



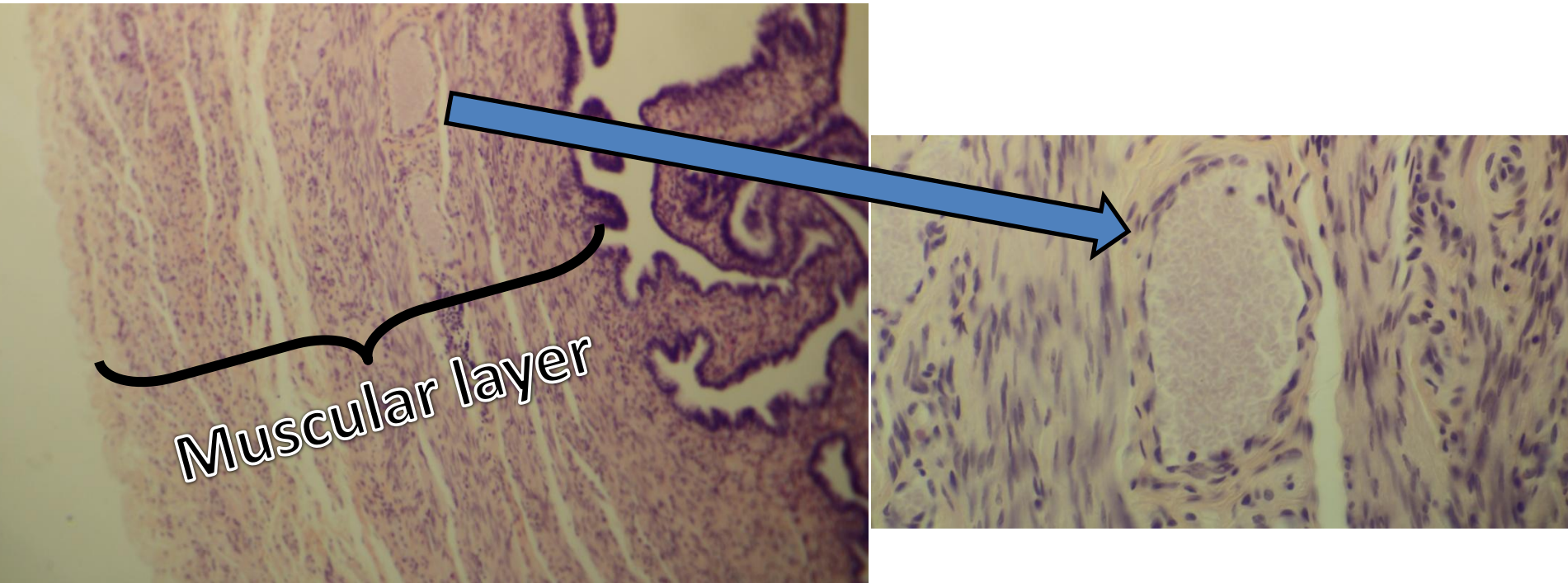
Cells of corpus luteum (steroid secreting cells-
vacuolated cytoplasm)



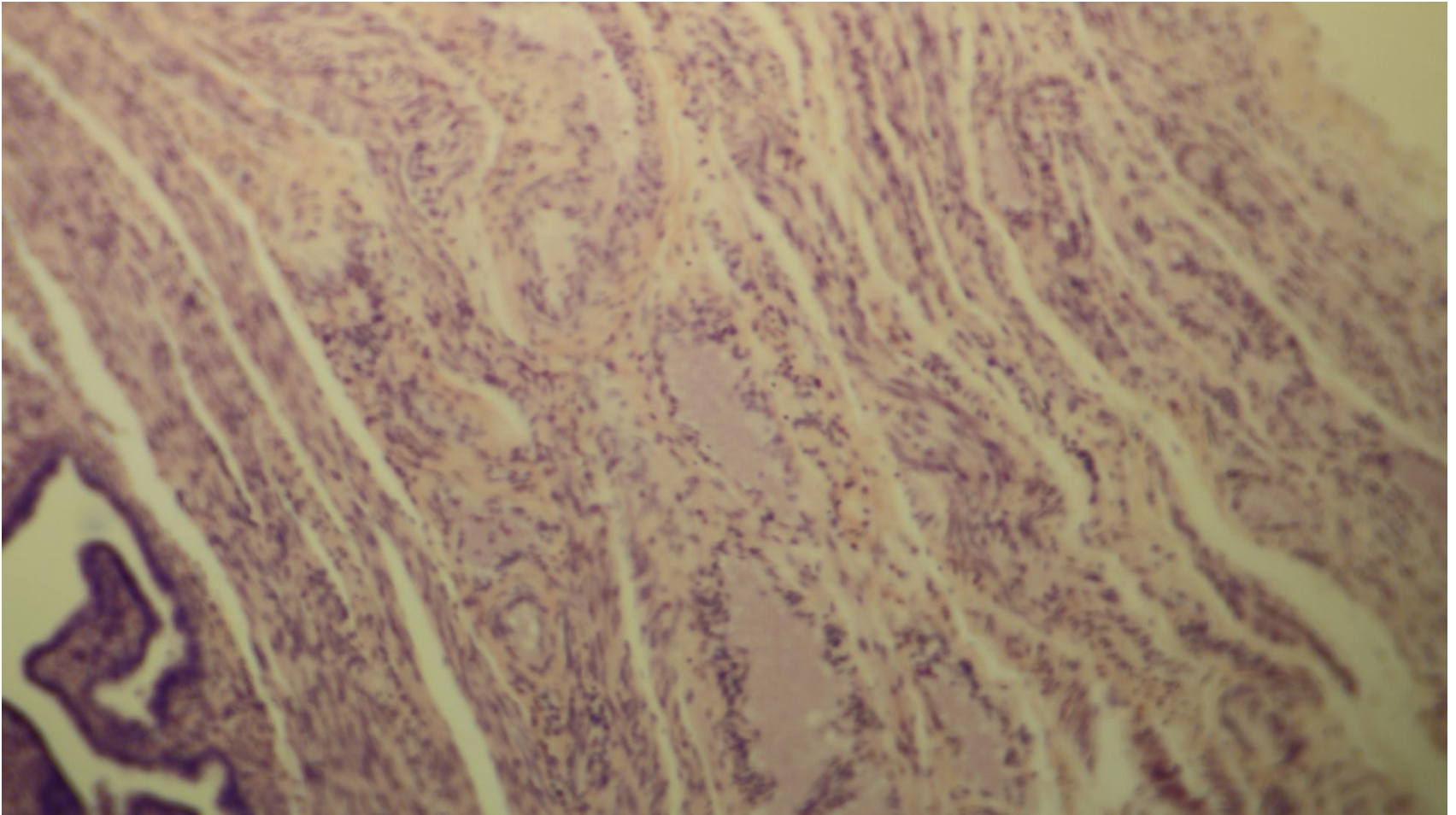
Fallopian tube (ampulla)



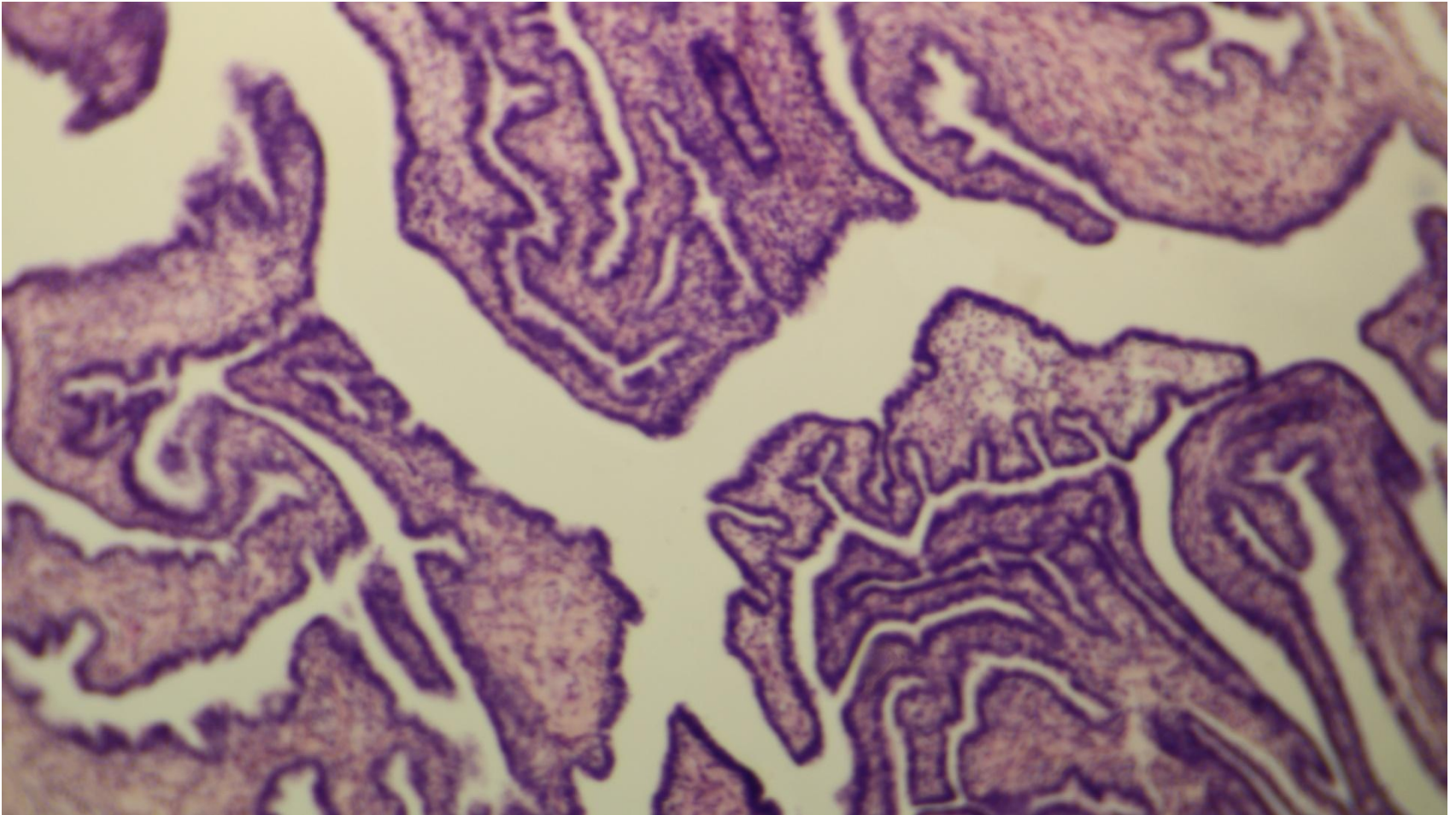
Muscular layer and venule (ampulla)



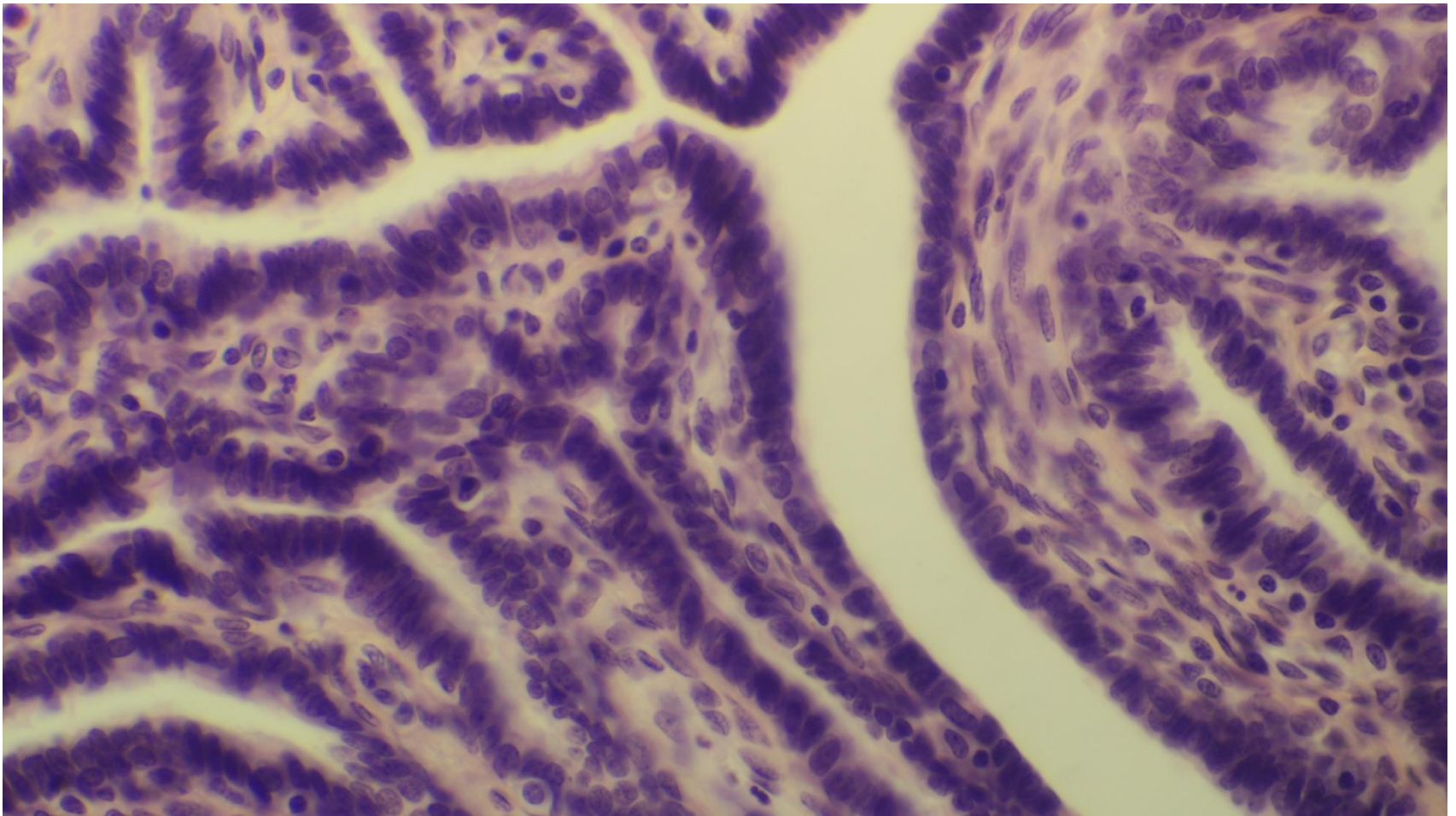
Muscular layer (Ampulla)



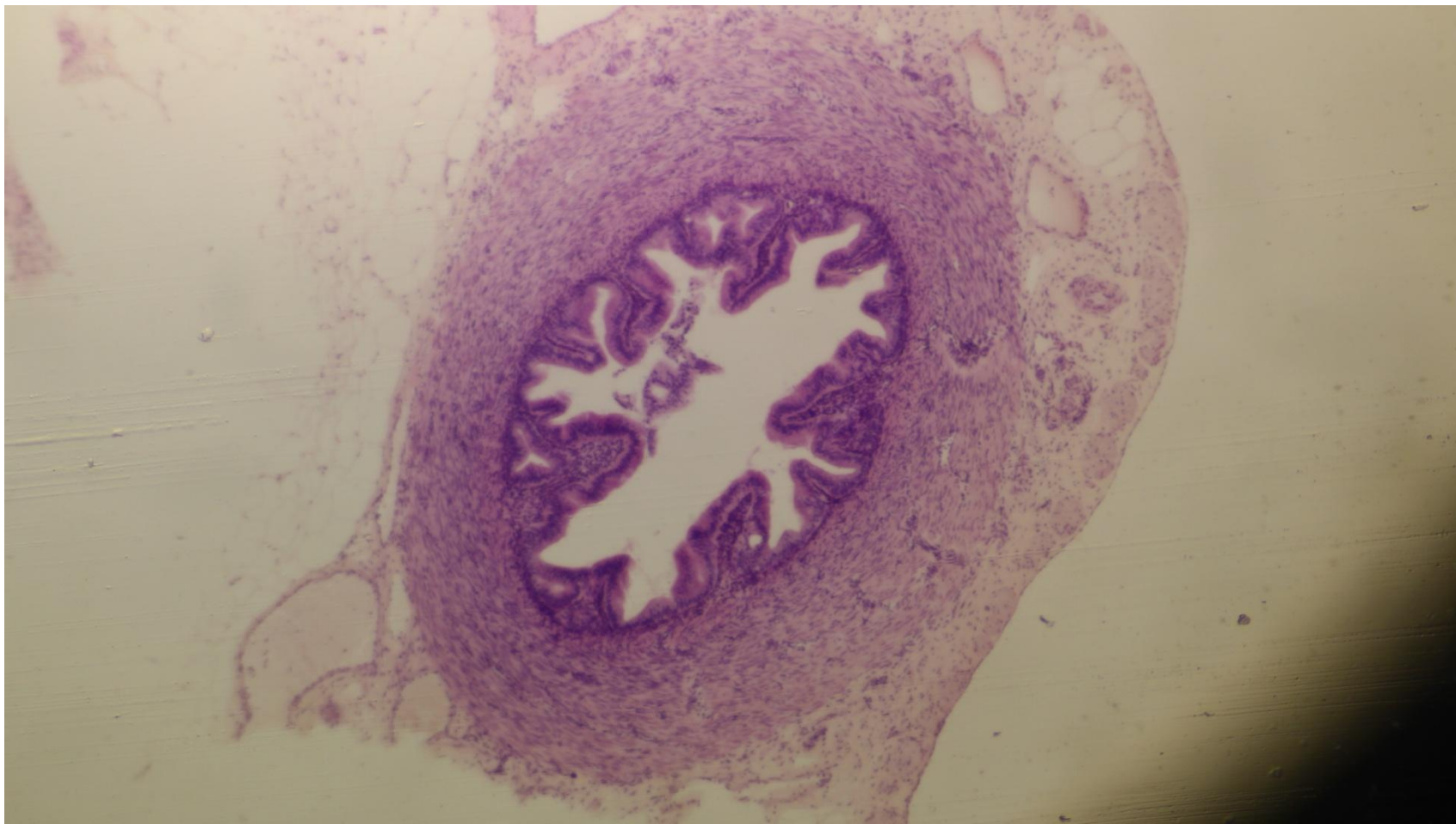
Mucosa (Ampulla)



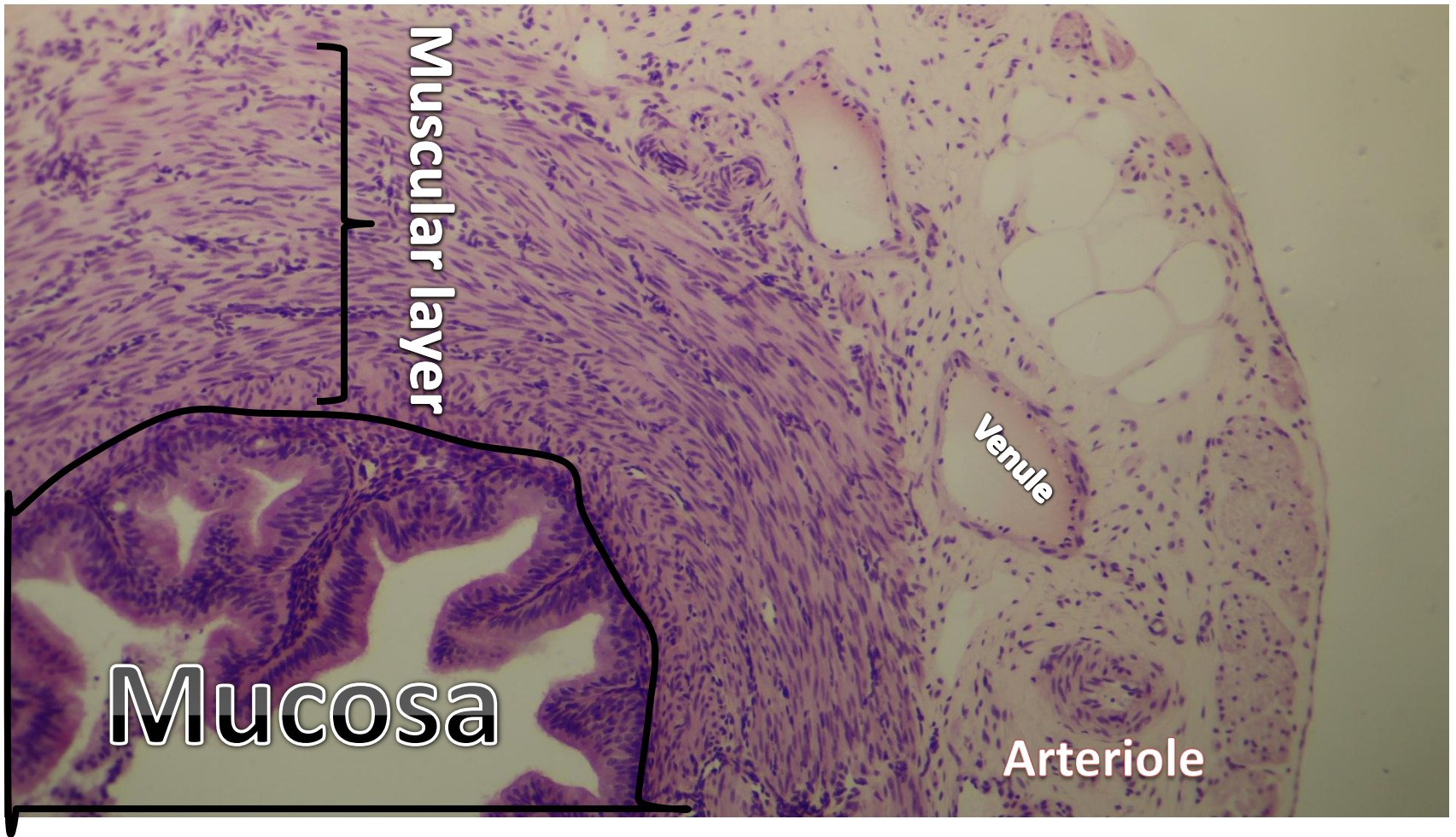
Epithelial lining (Ampulla)



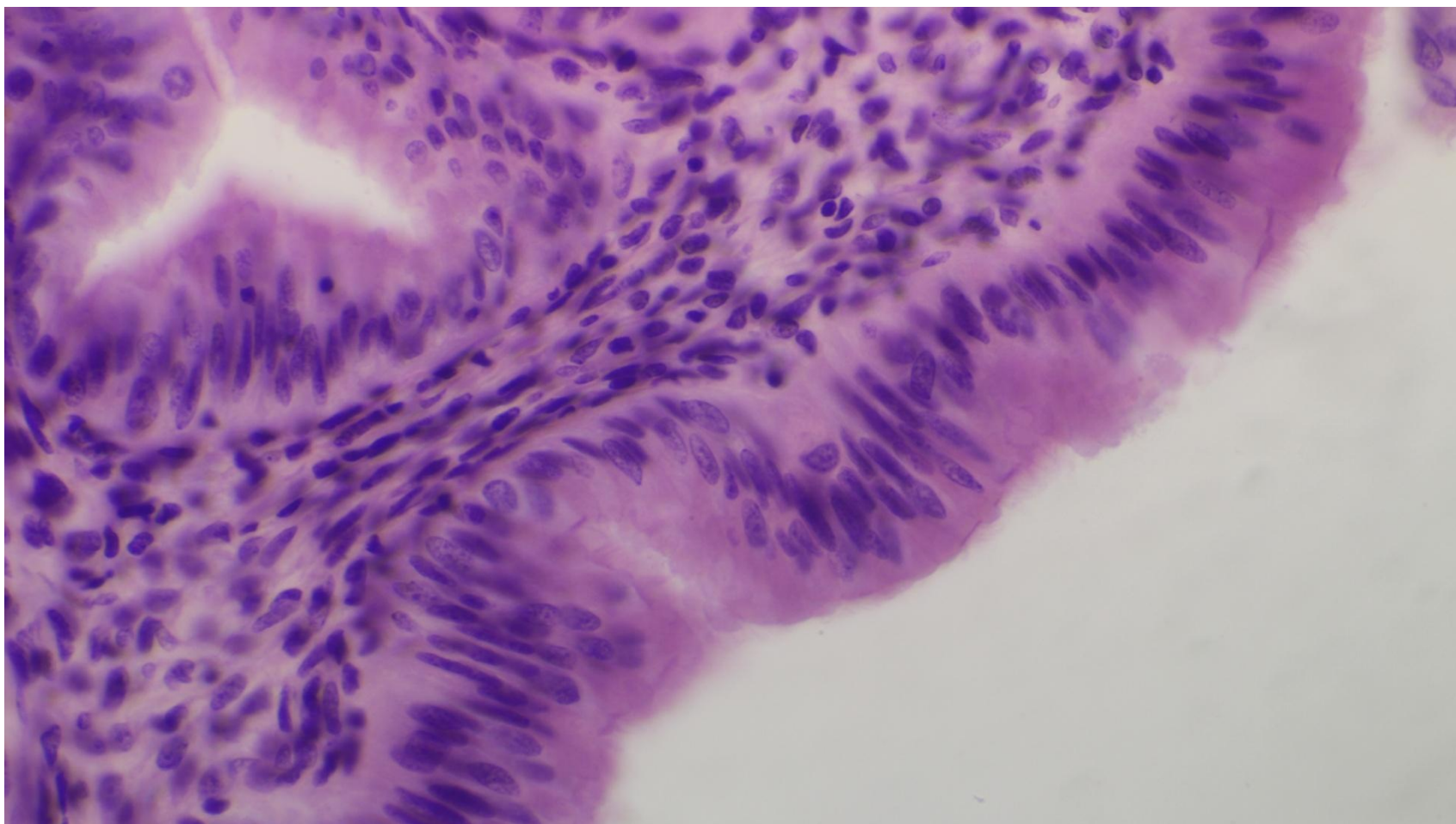
Fallopian tube



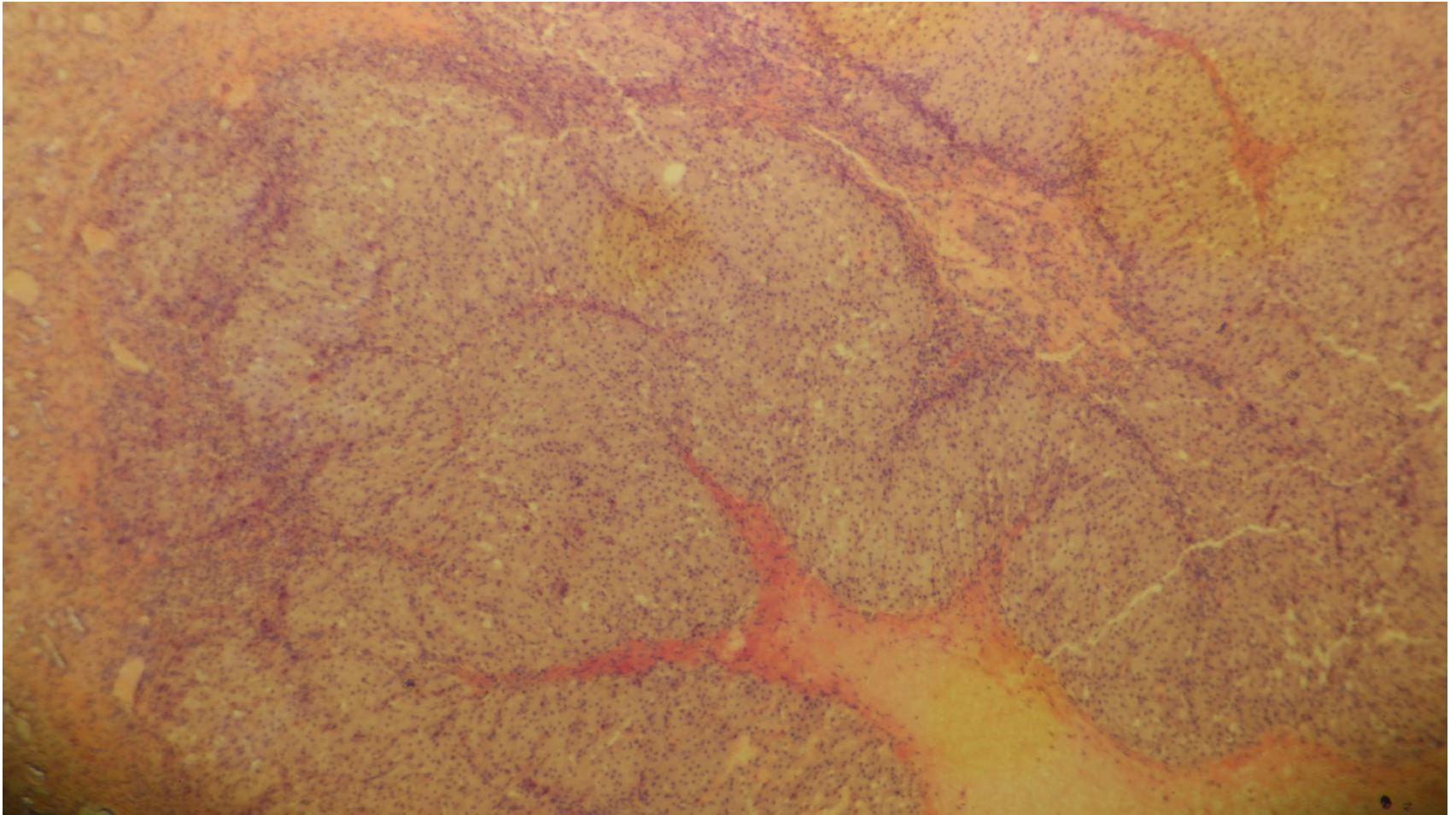
Fallopian tube

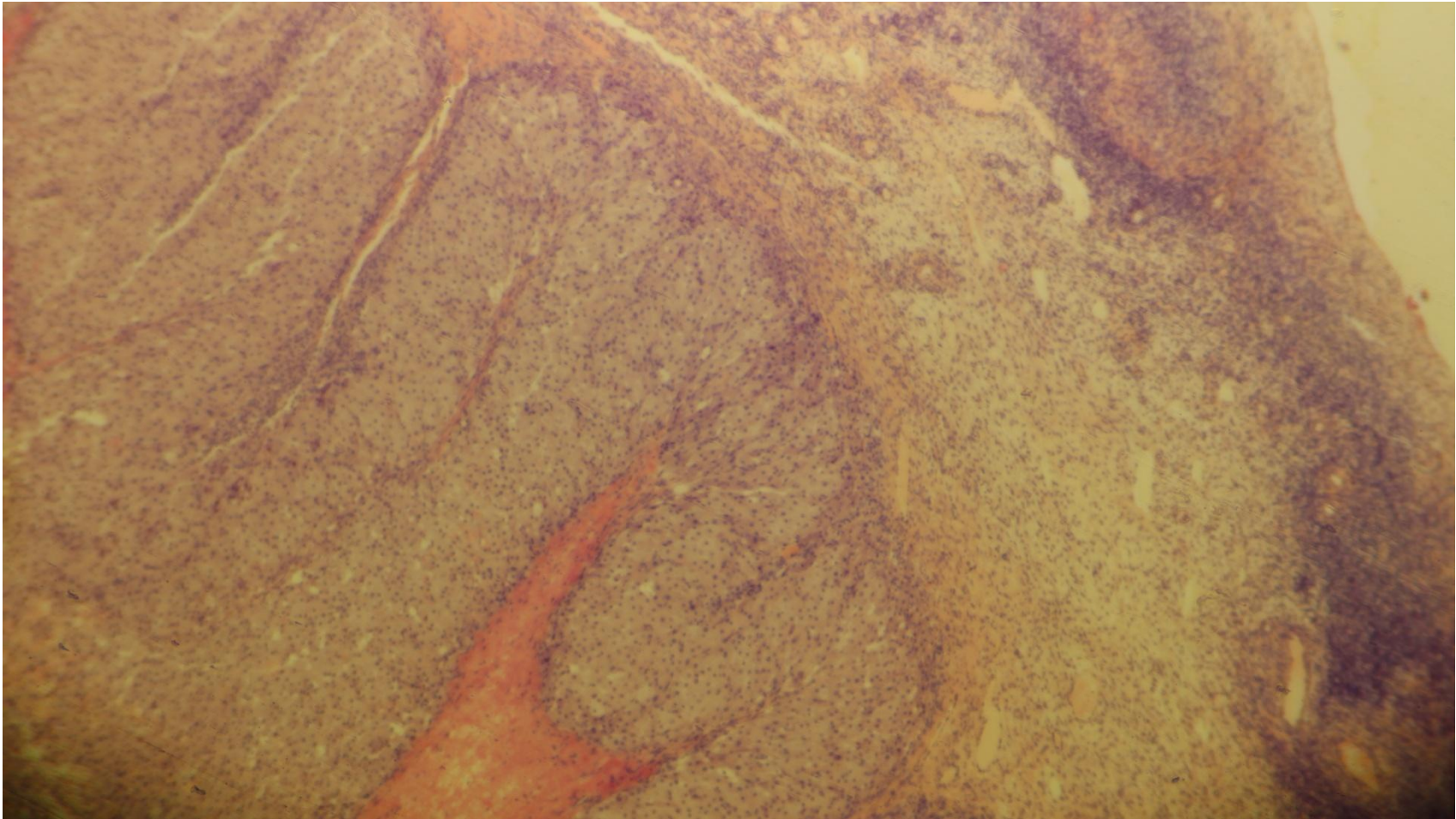


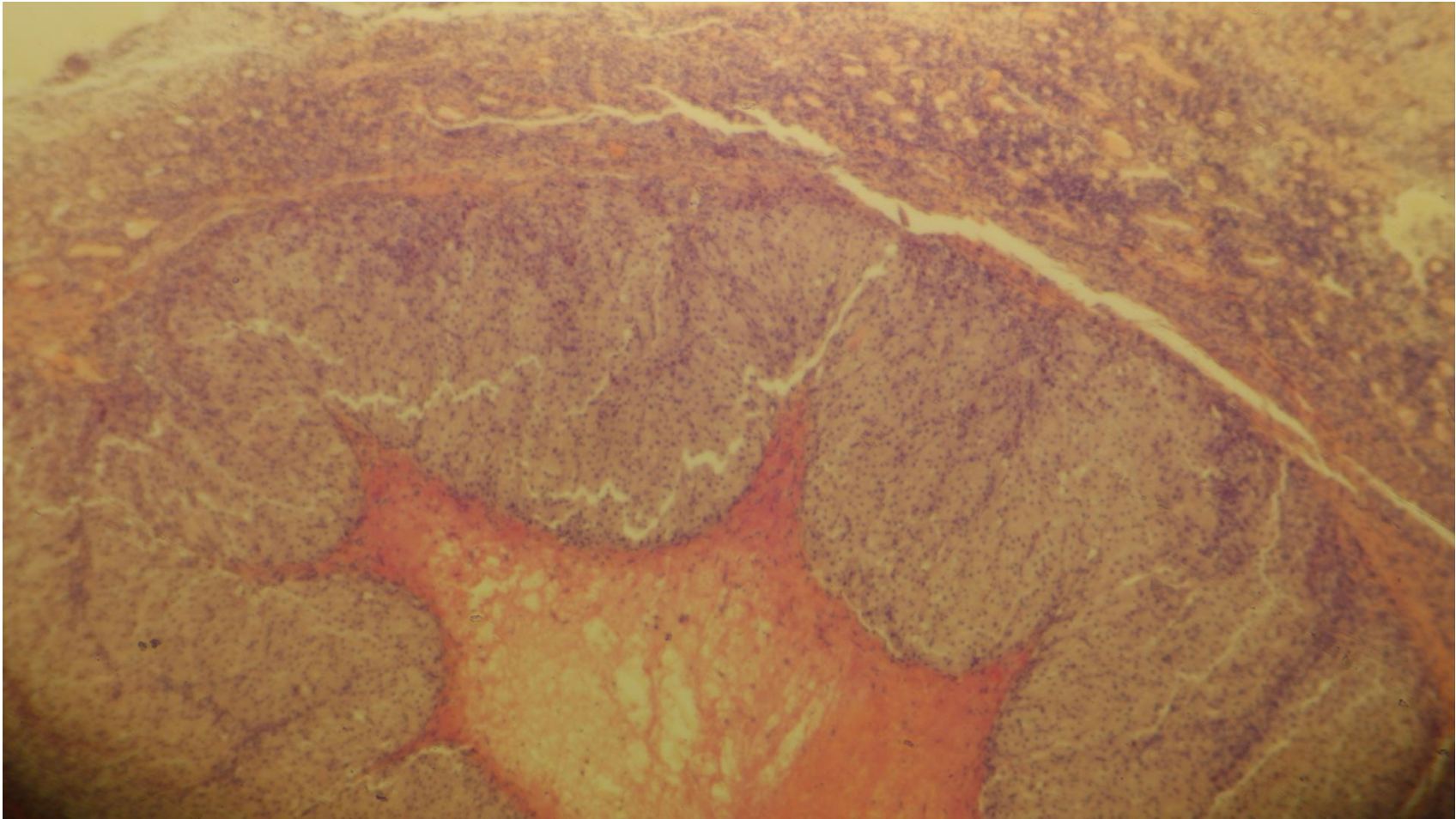
Epithelial lining

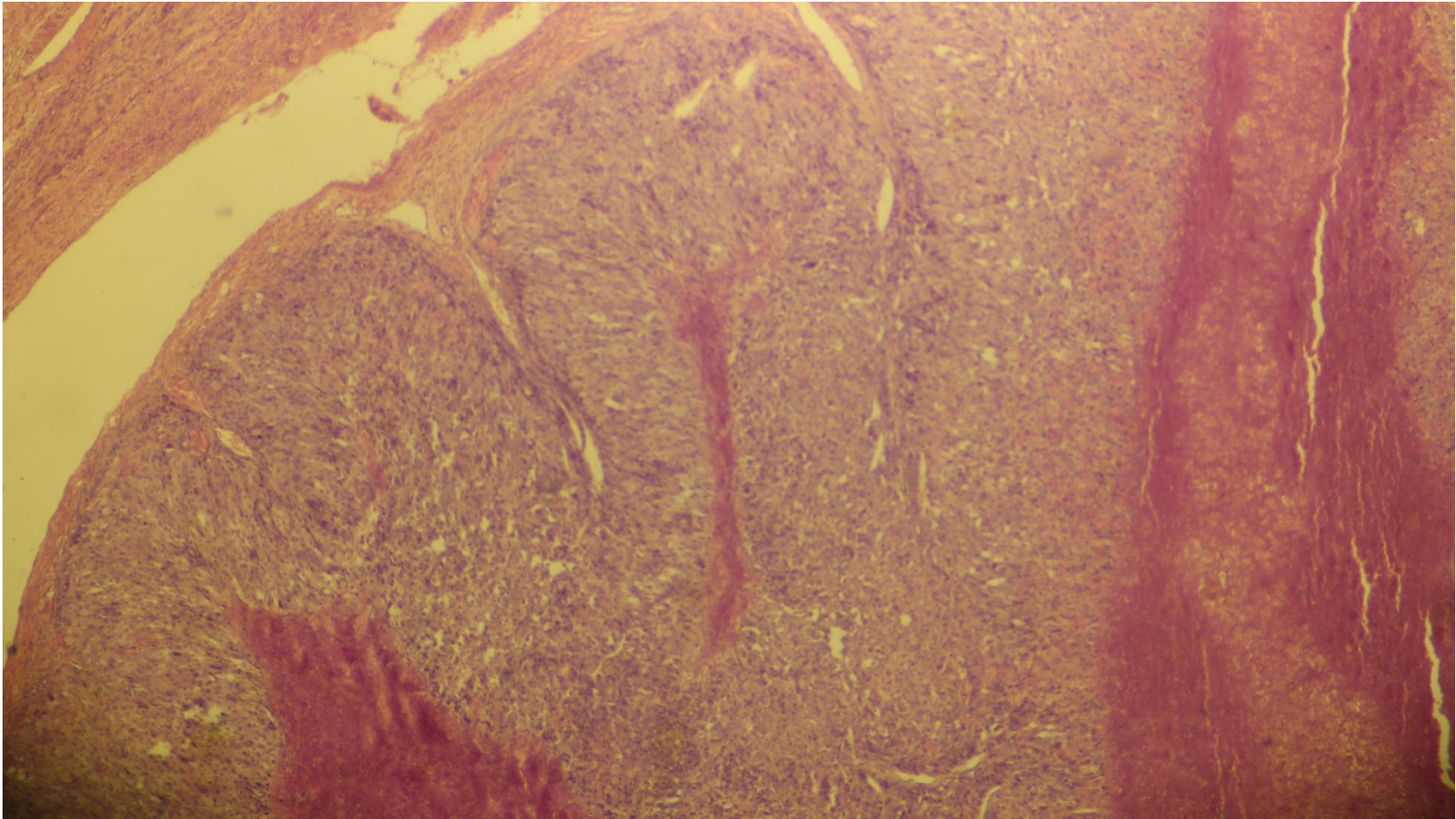


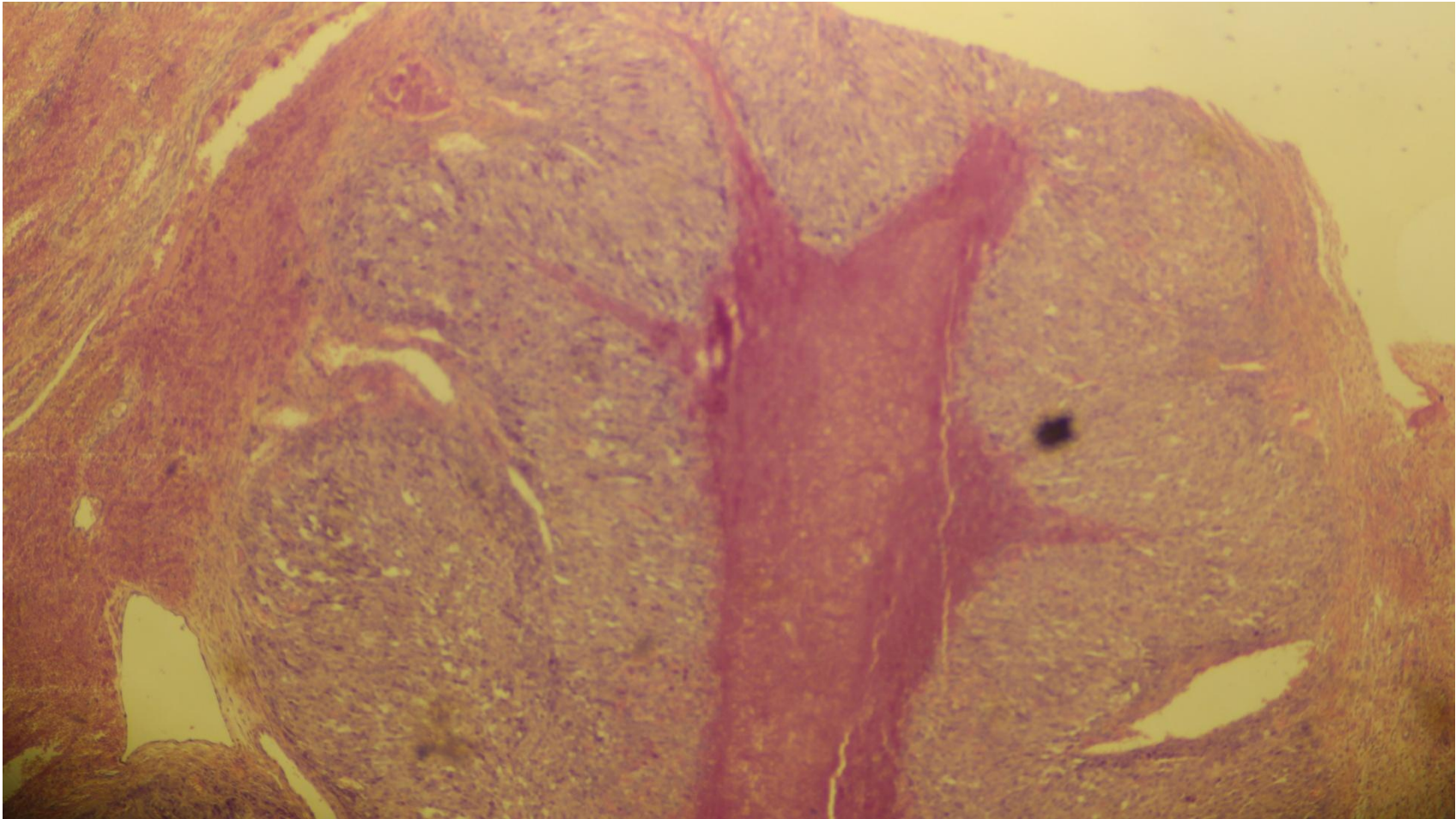
Corpus luteum of pregnancy

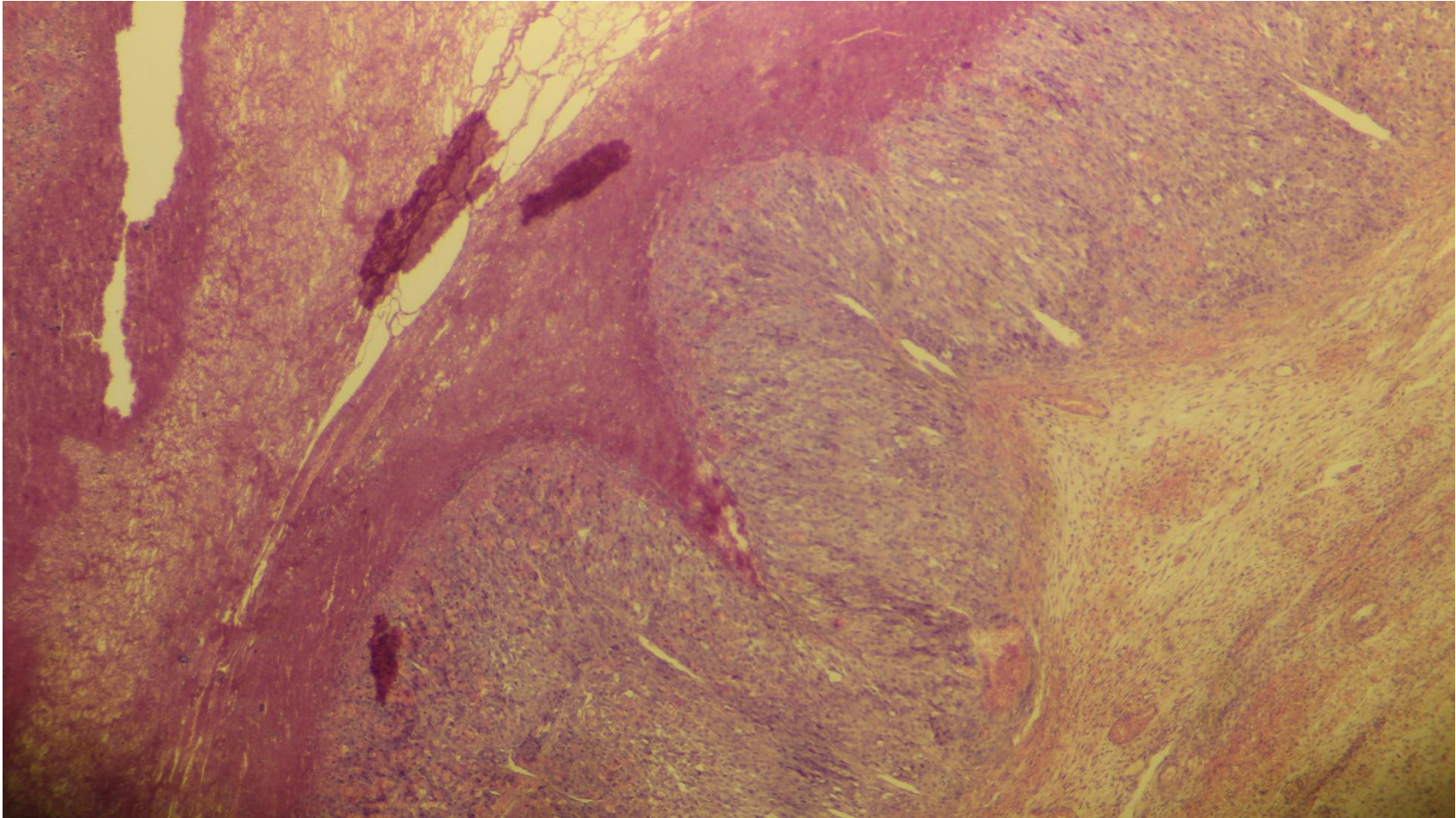




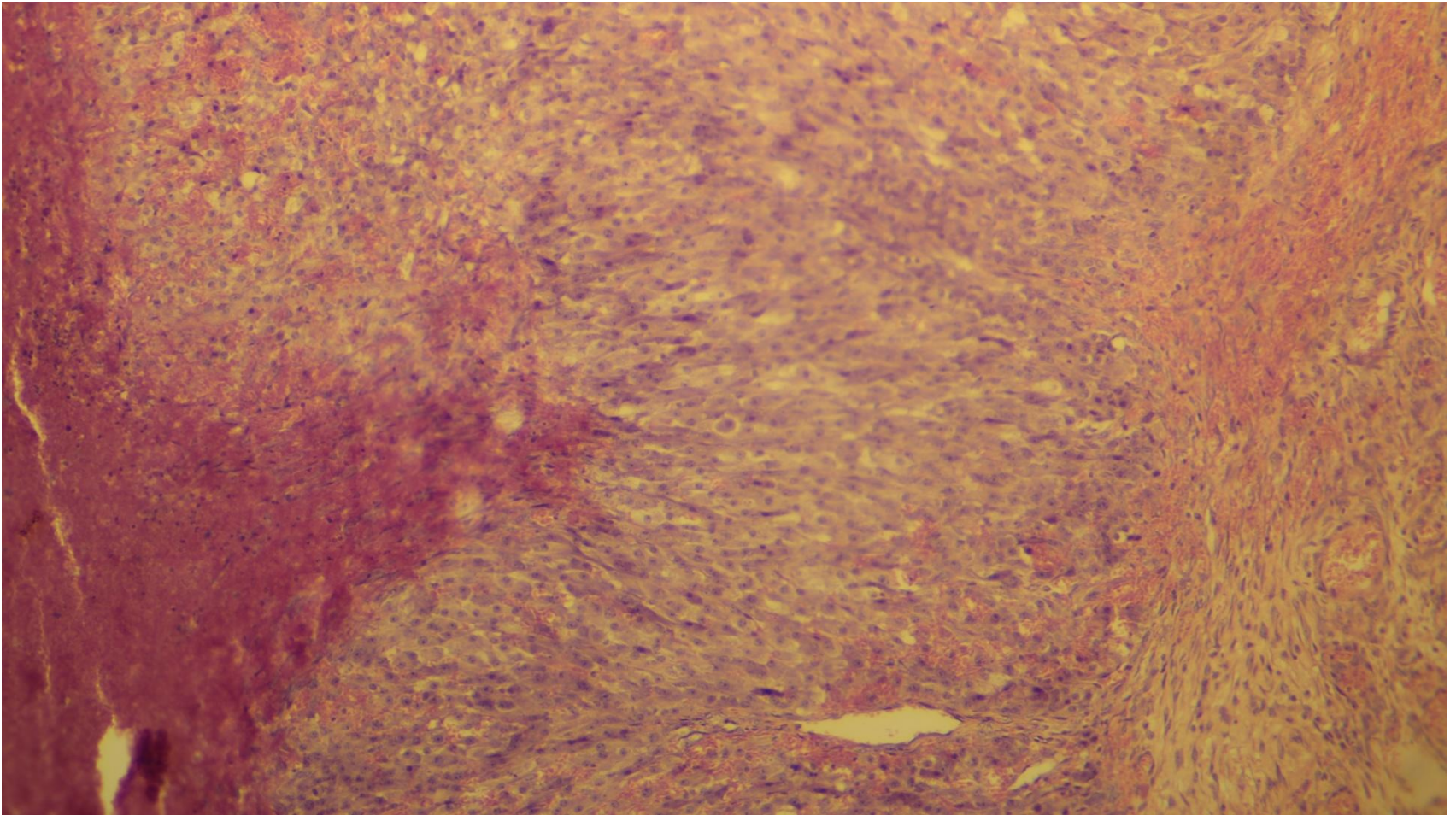








Steroid secreting cells (progesterone)



Thank you