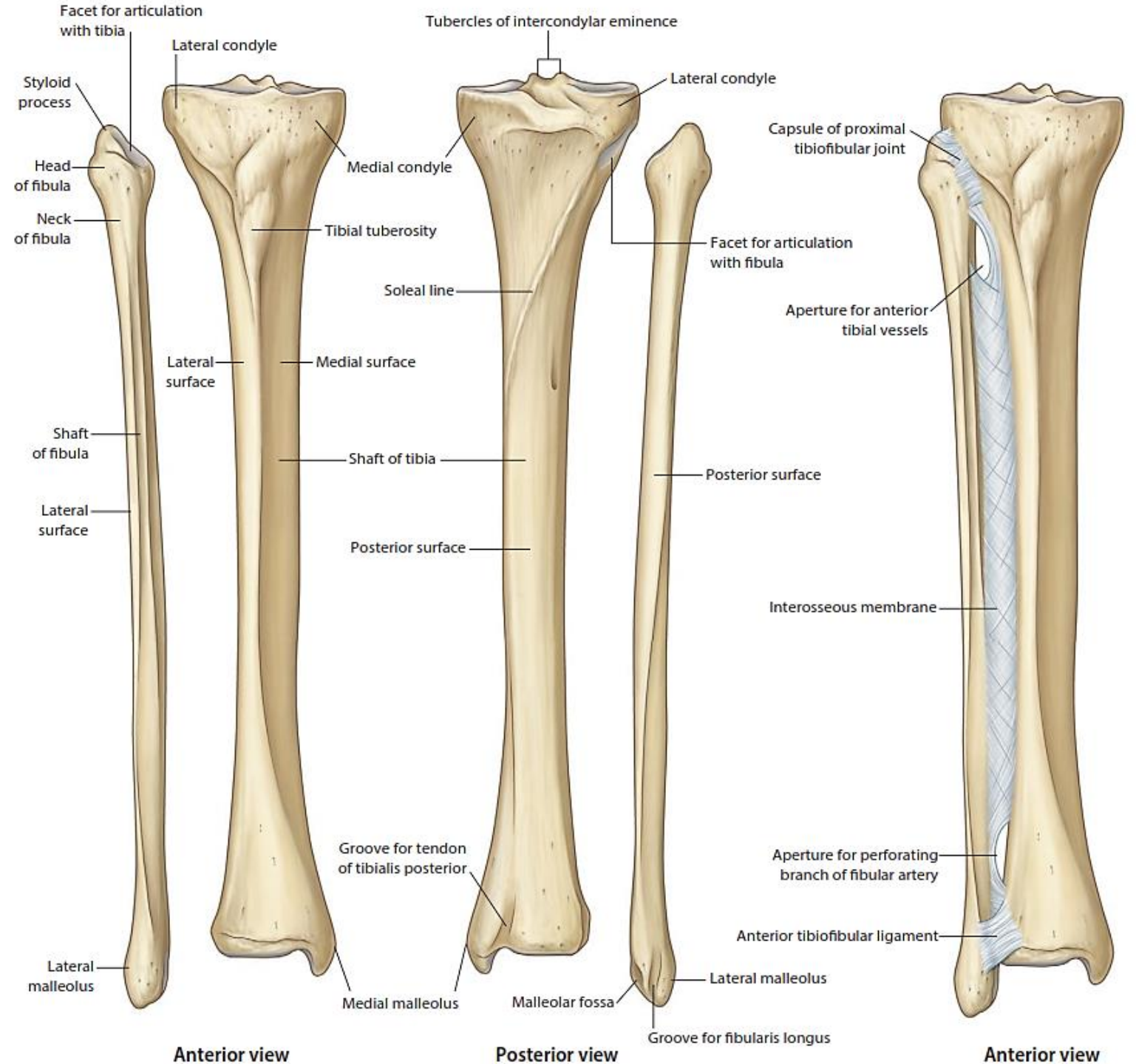
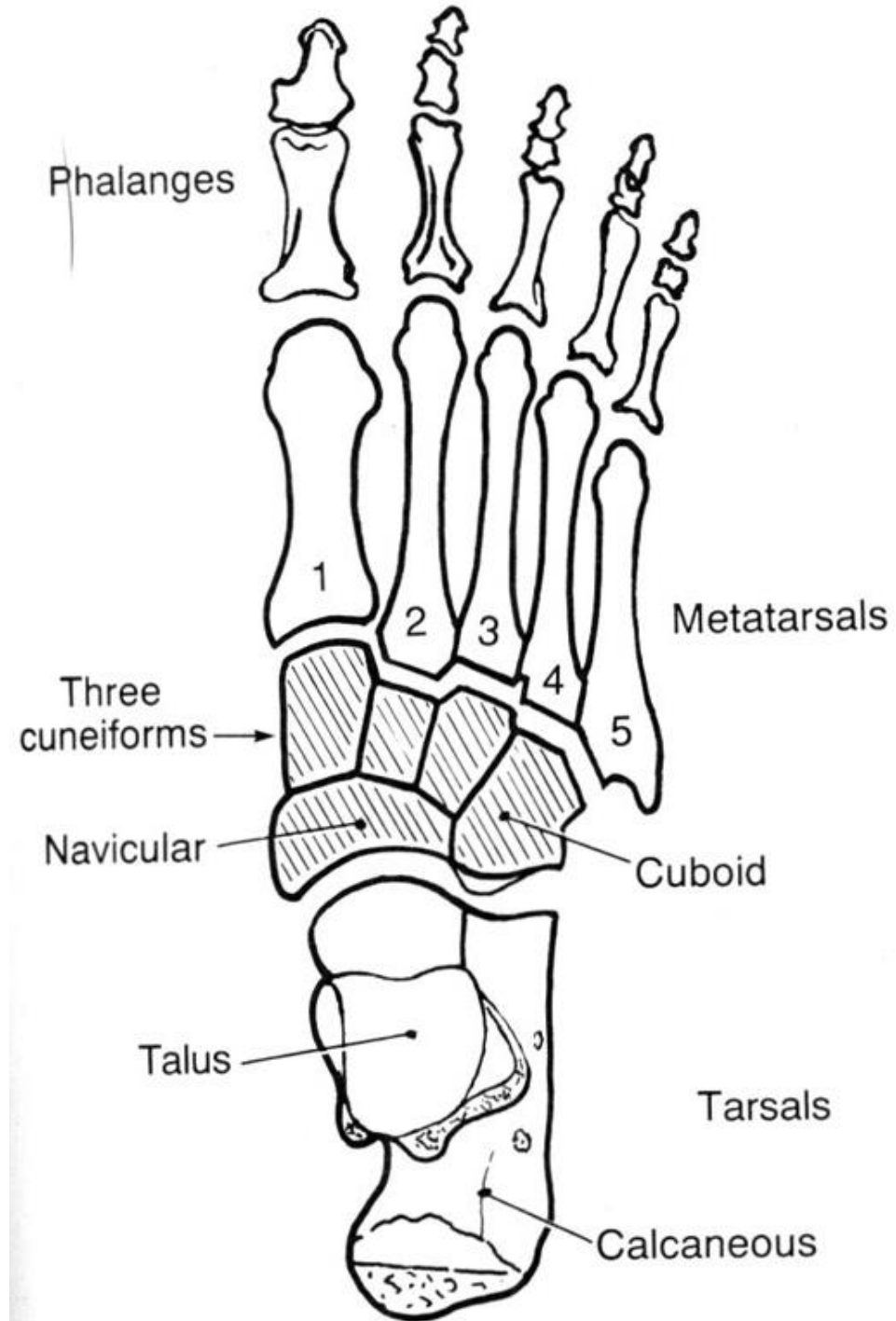


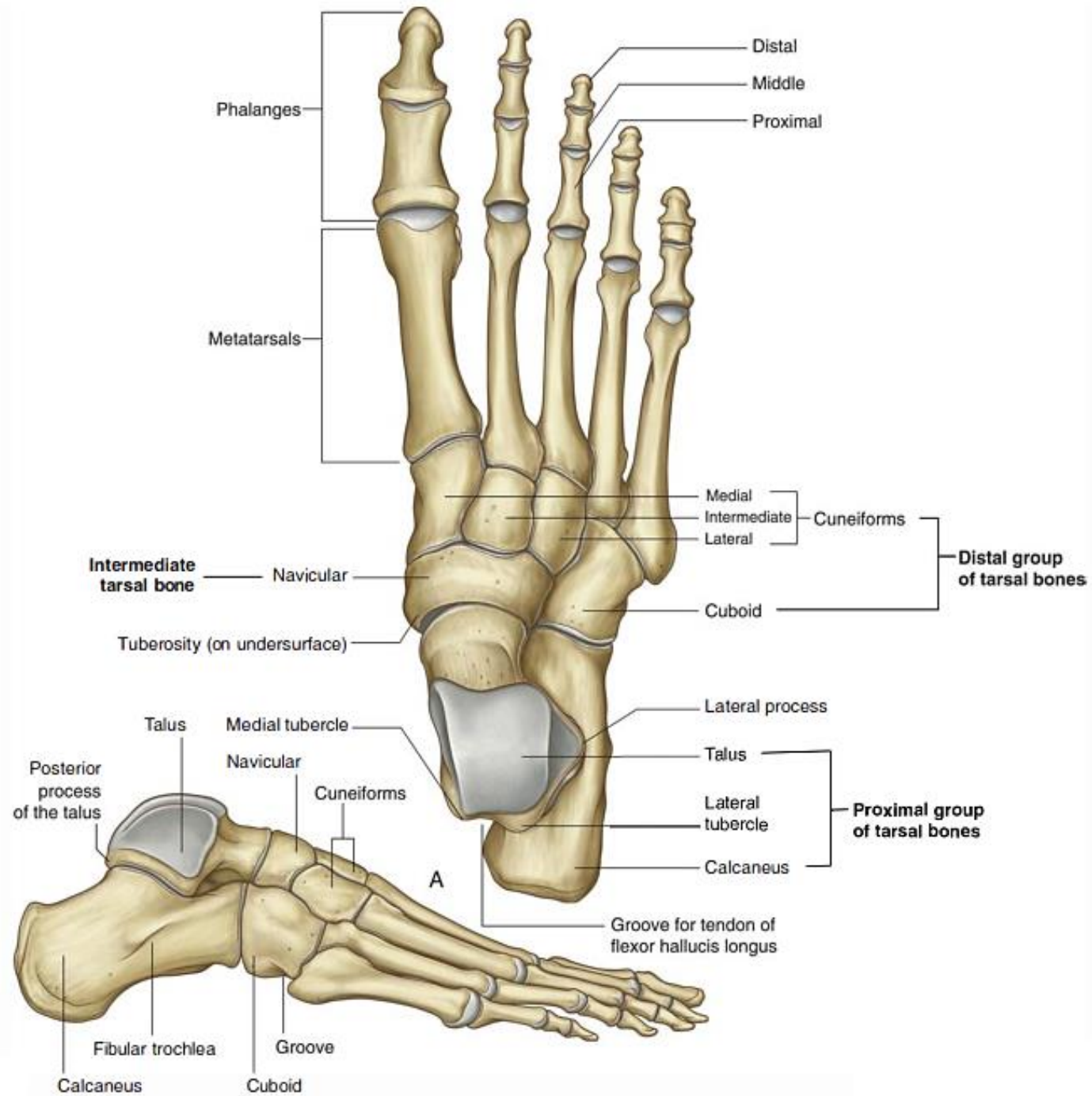
**Front of the leg
& dorsum of the foot**

Bones of the leg

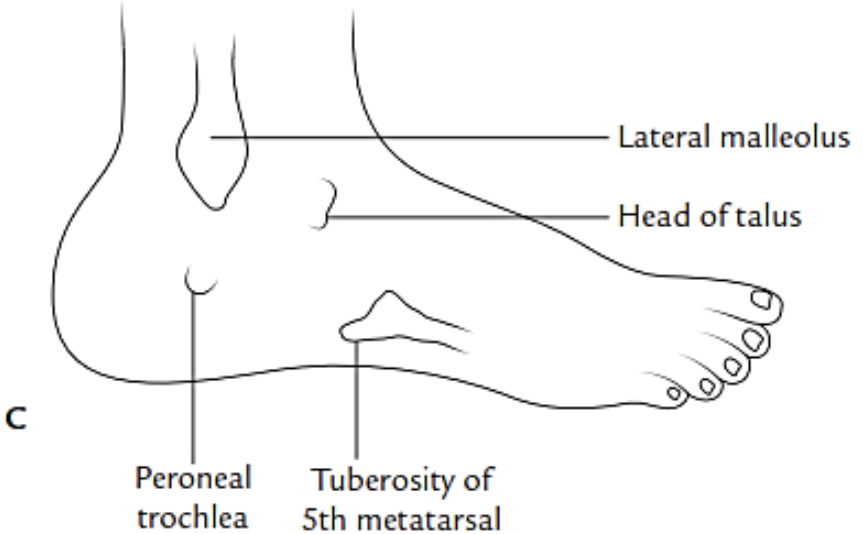
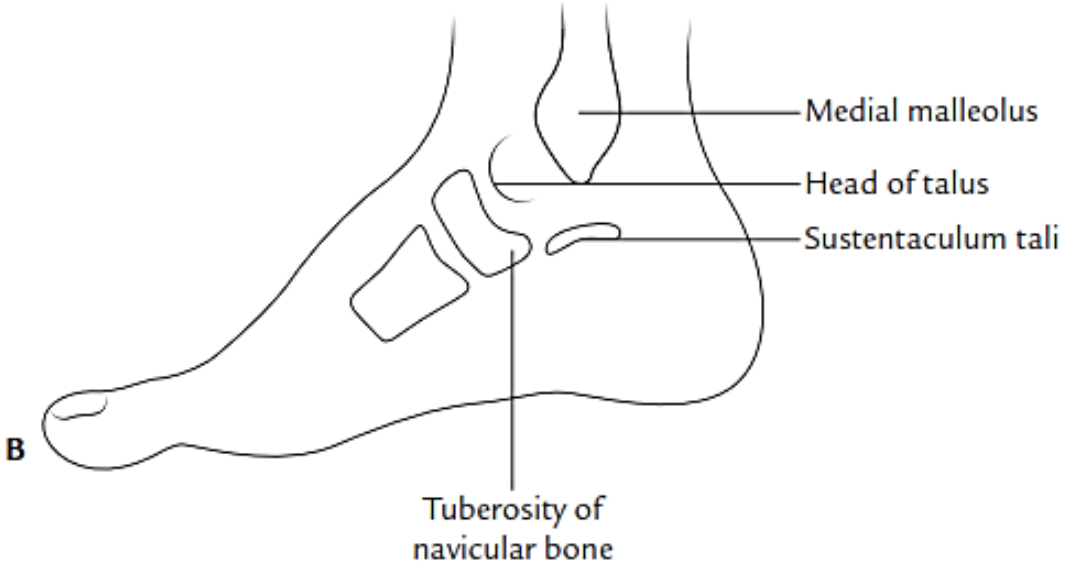
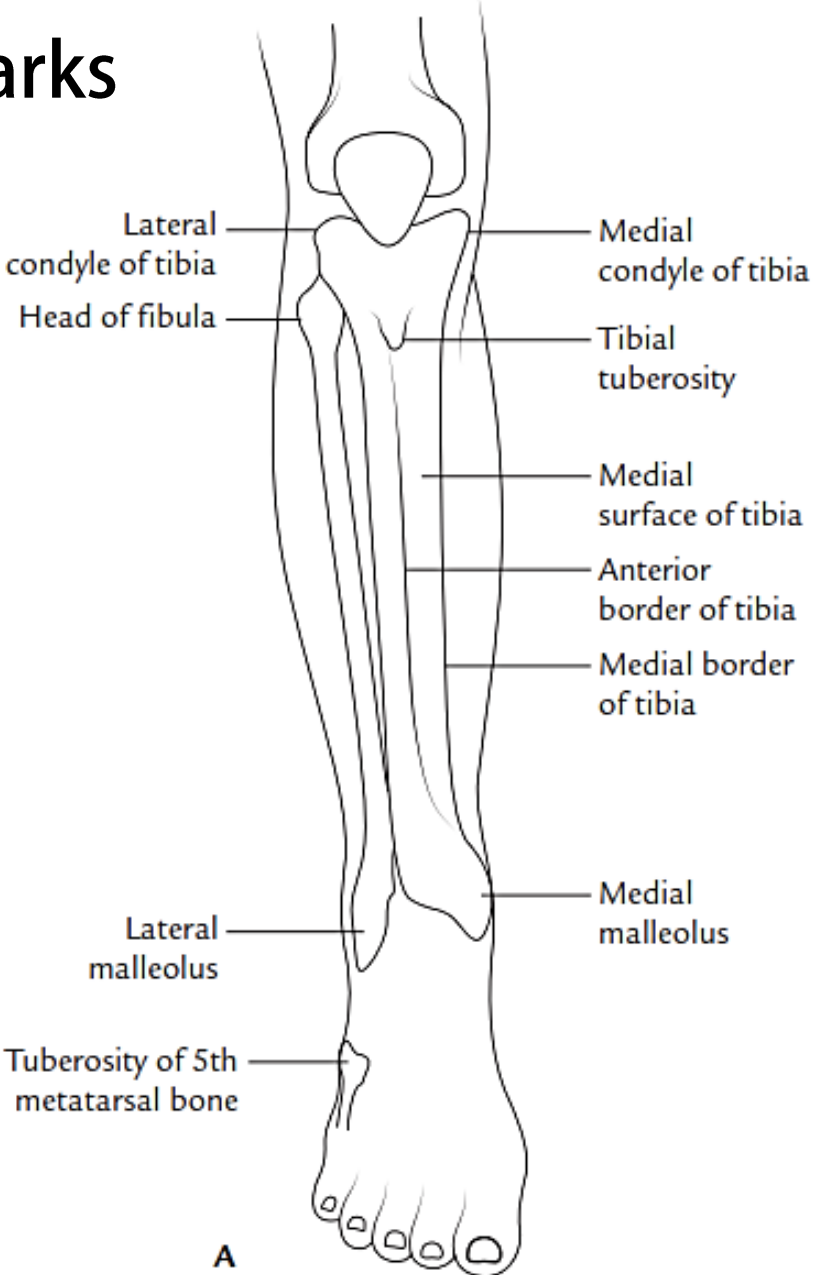


Foot bones

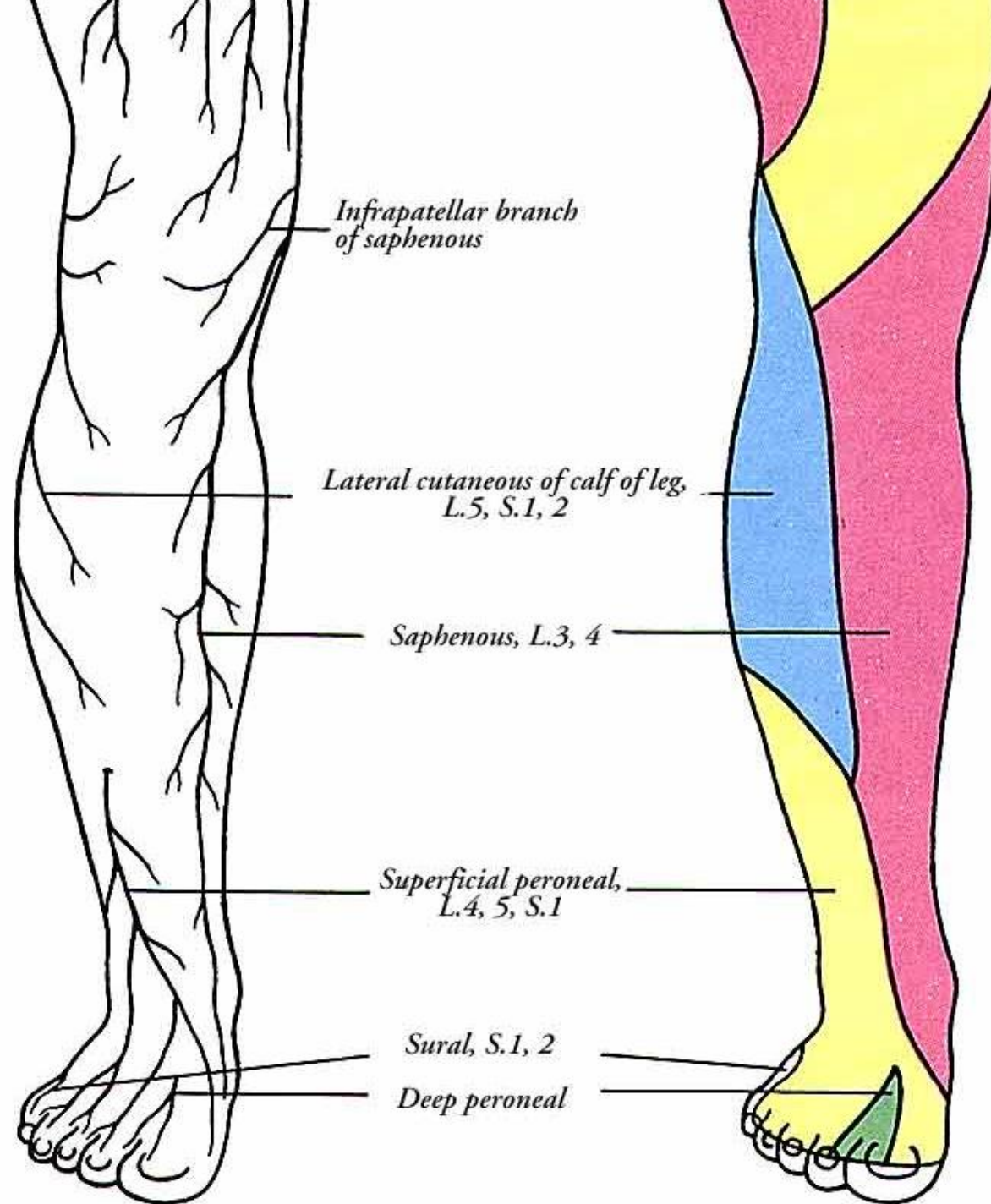




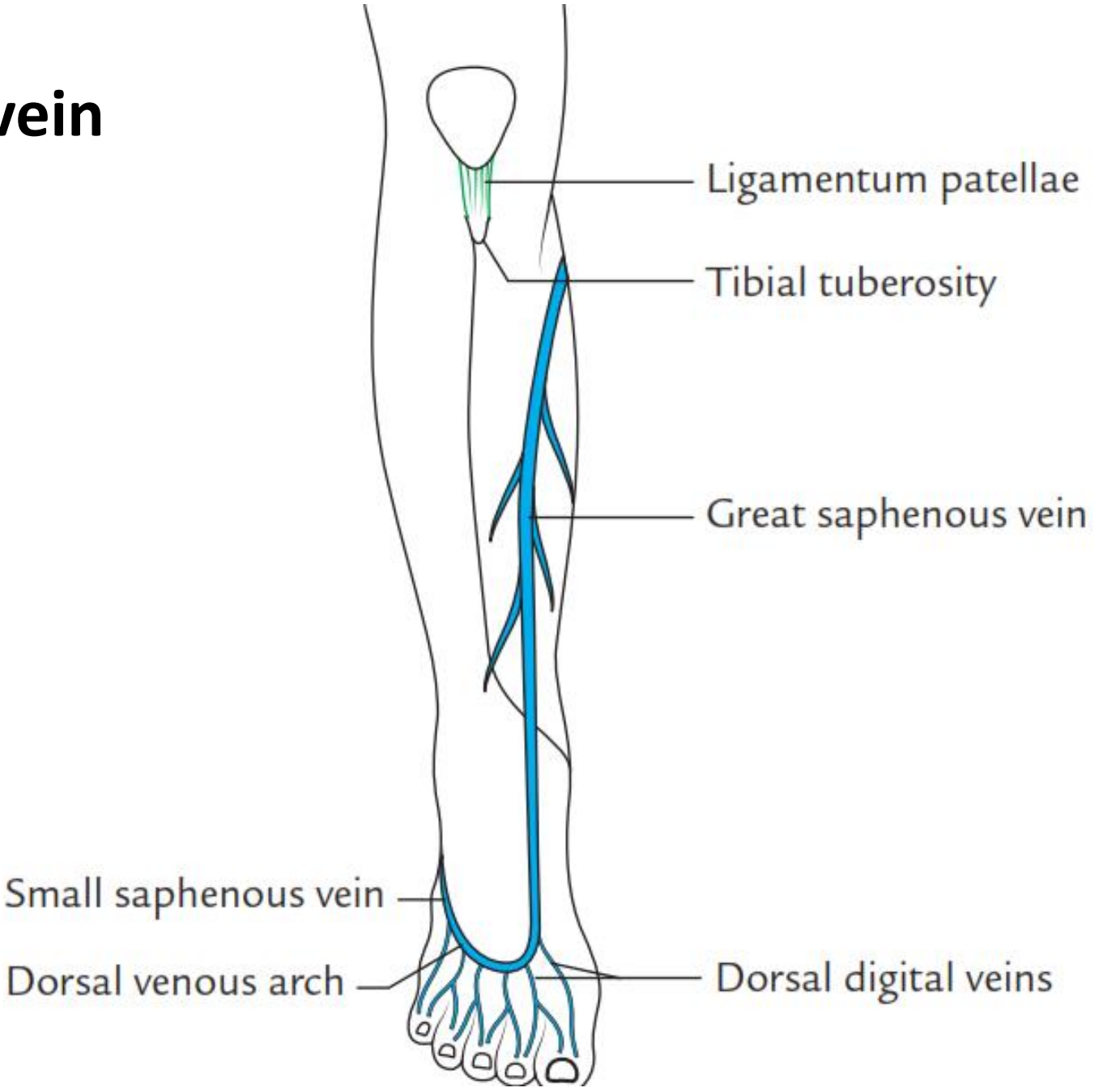
Surface landmarks



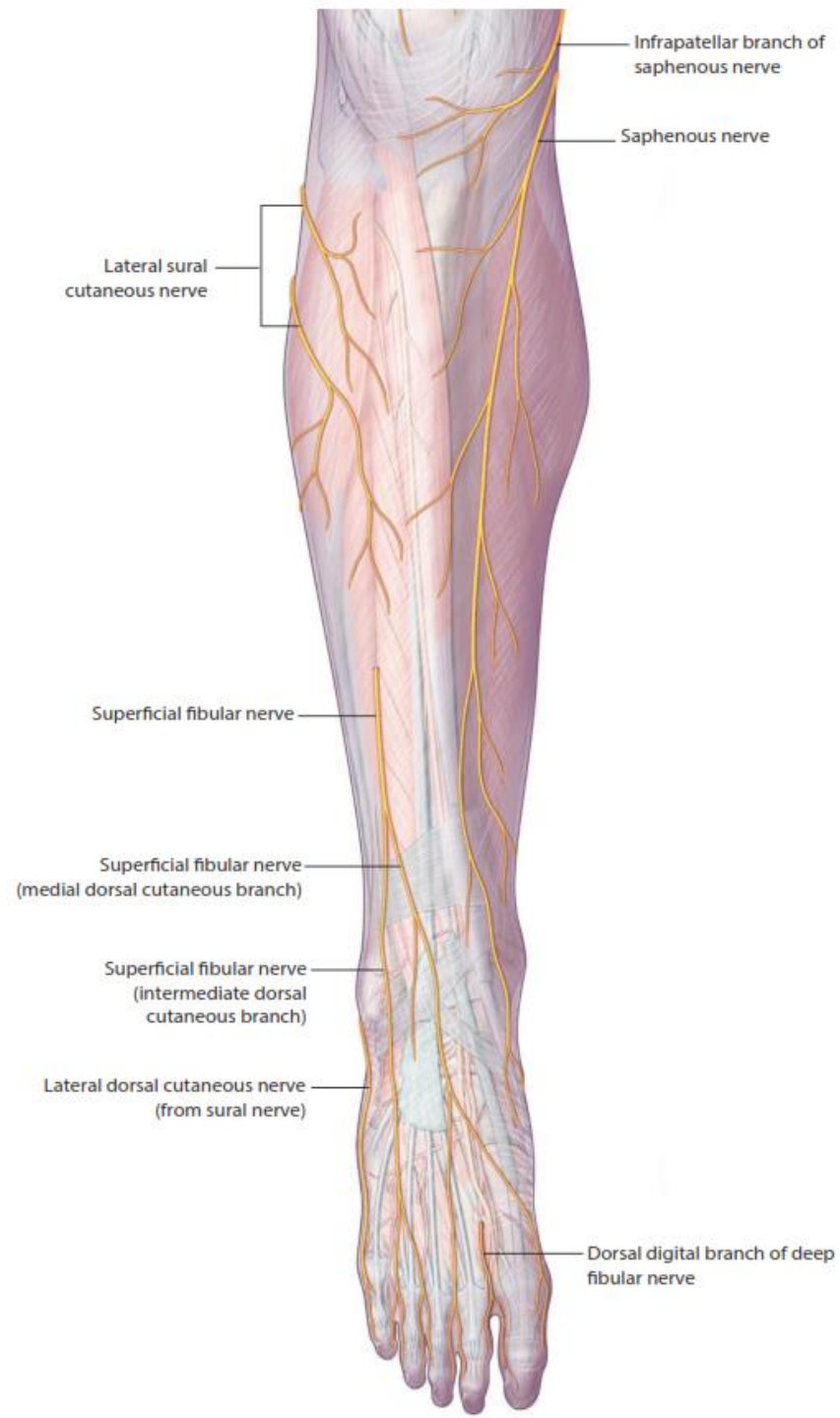
Cutaneous nerves



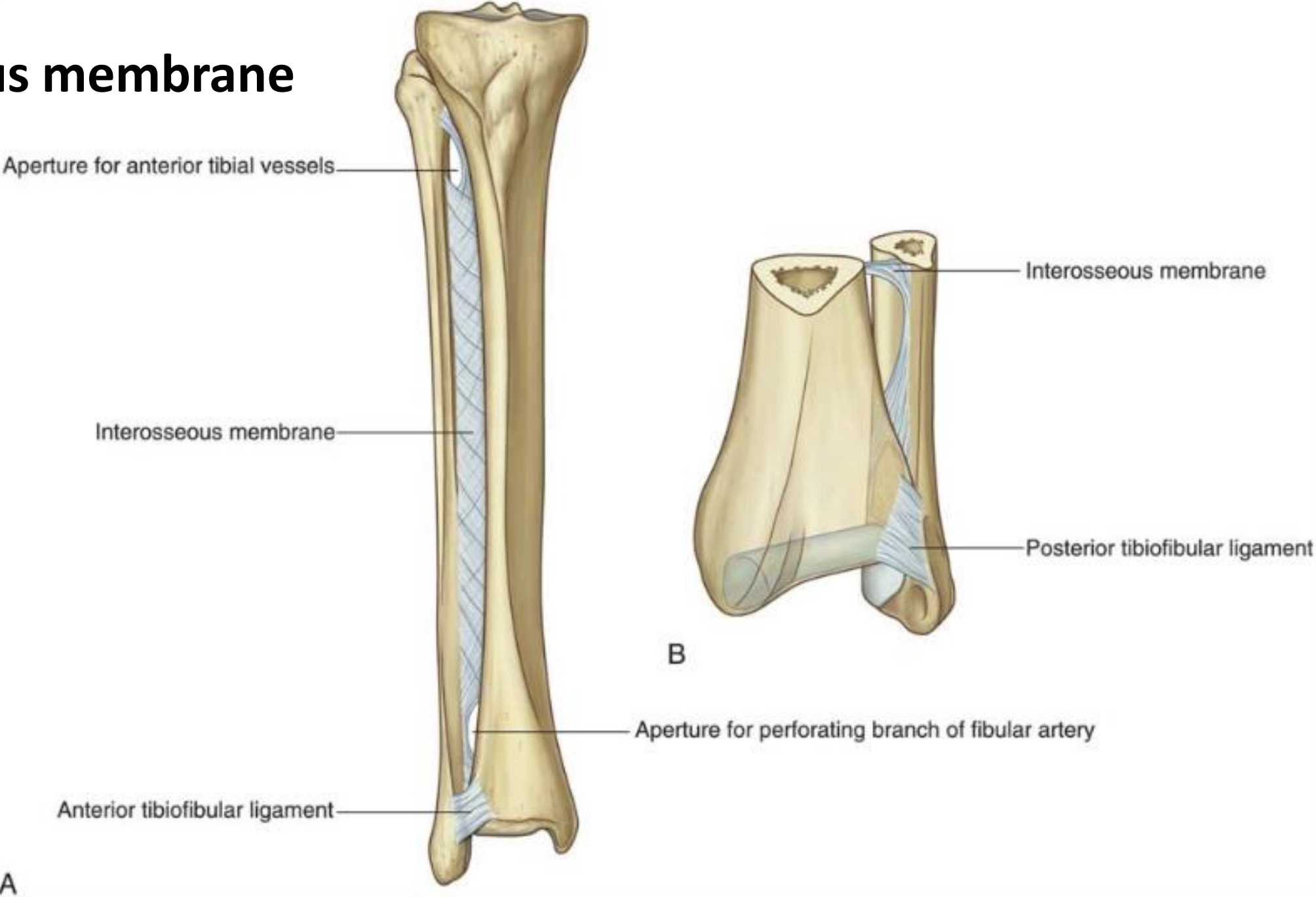
Great (long) saphenous vein



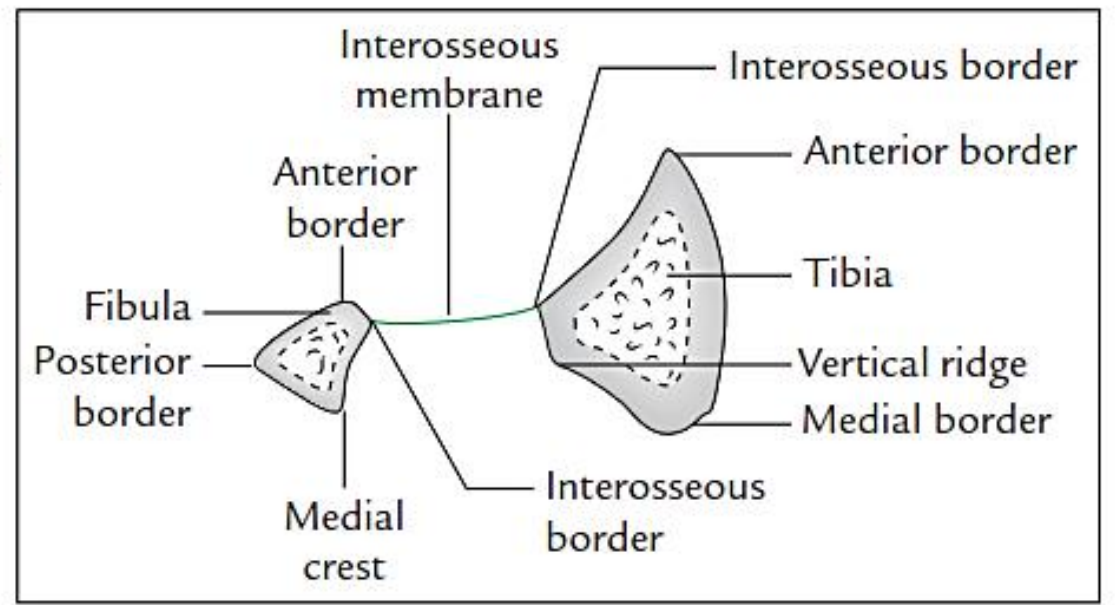
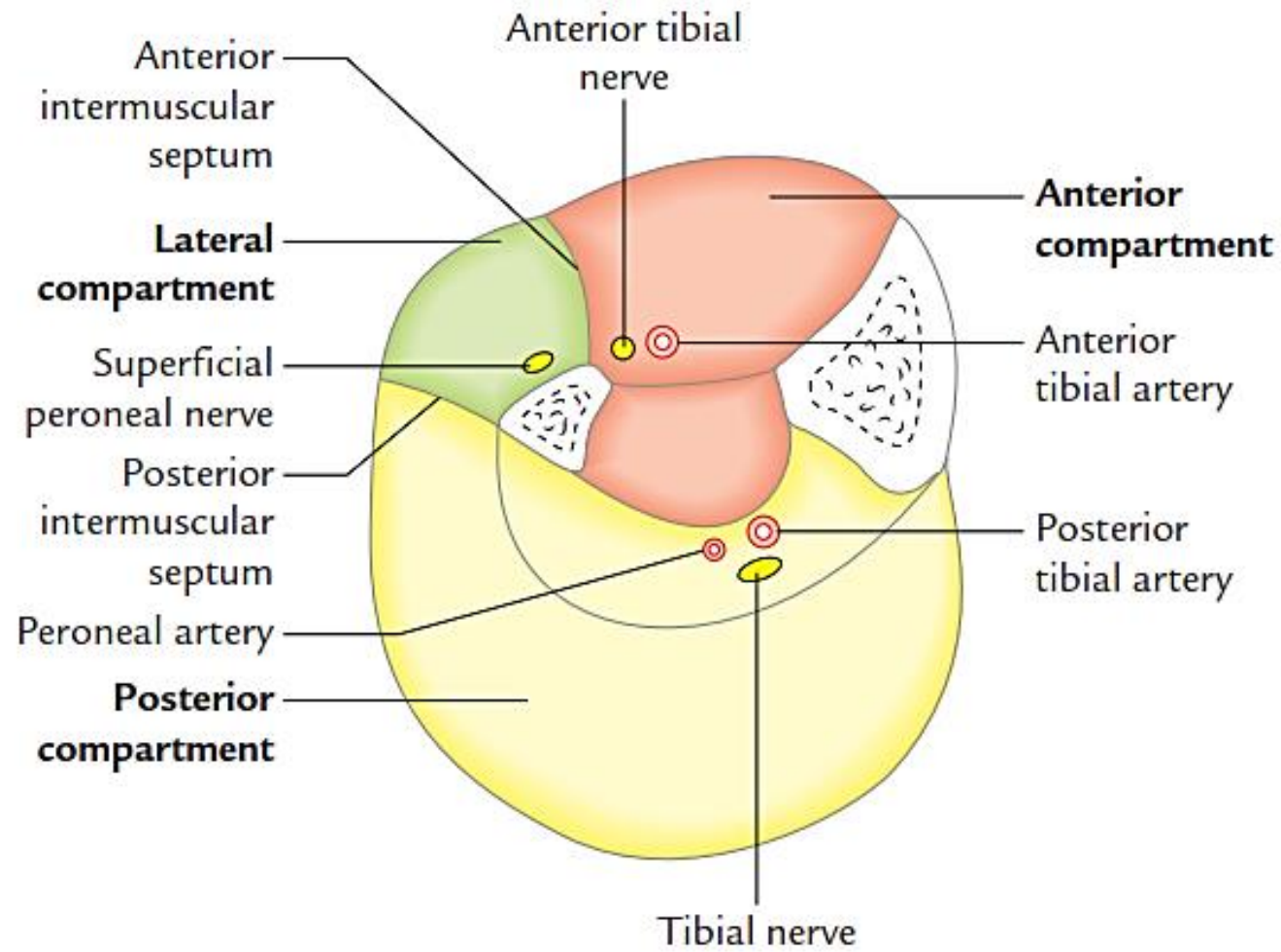
Deep fascia



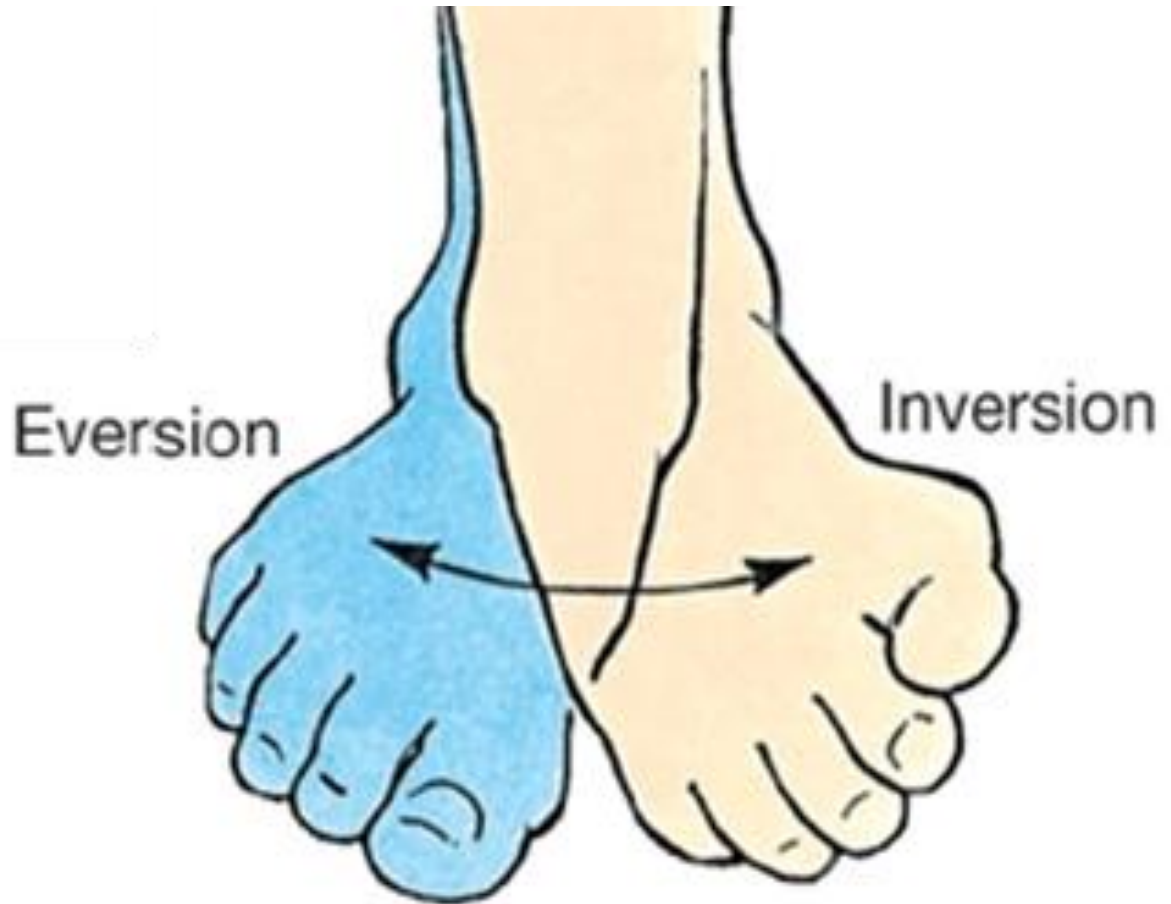
Interosseous membrane



Intermuscular septa & compartments



Movements at ankle joints



(a)

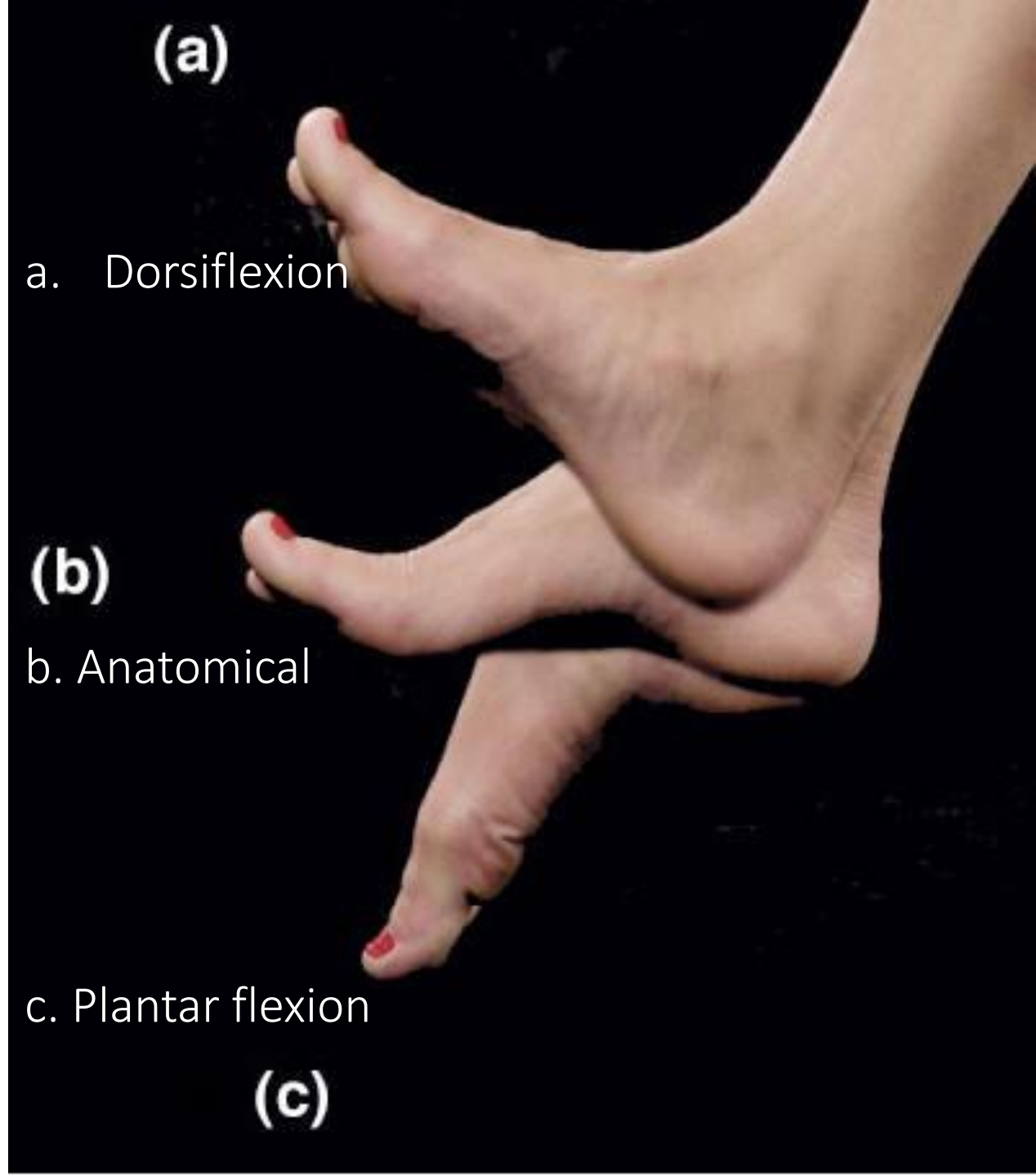
a. Dorsiflexion

(b)

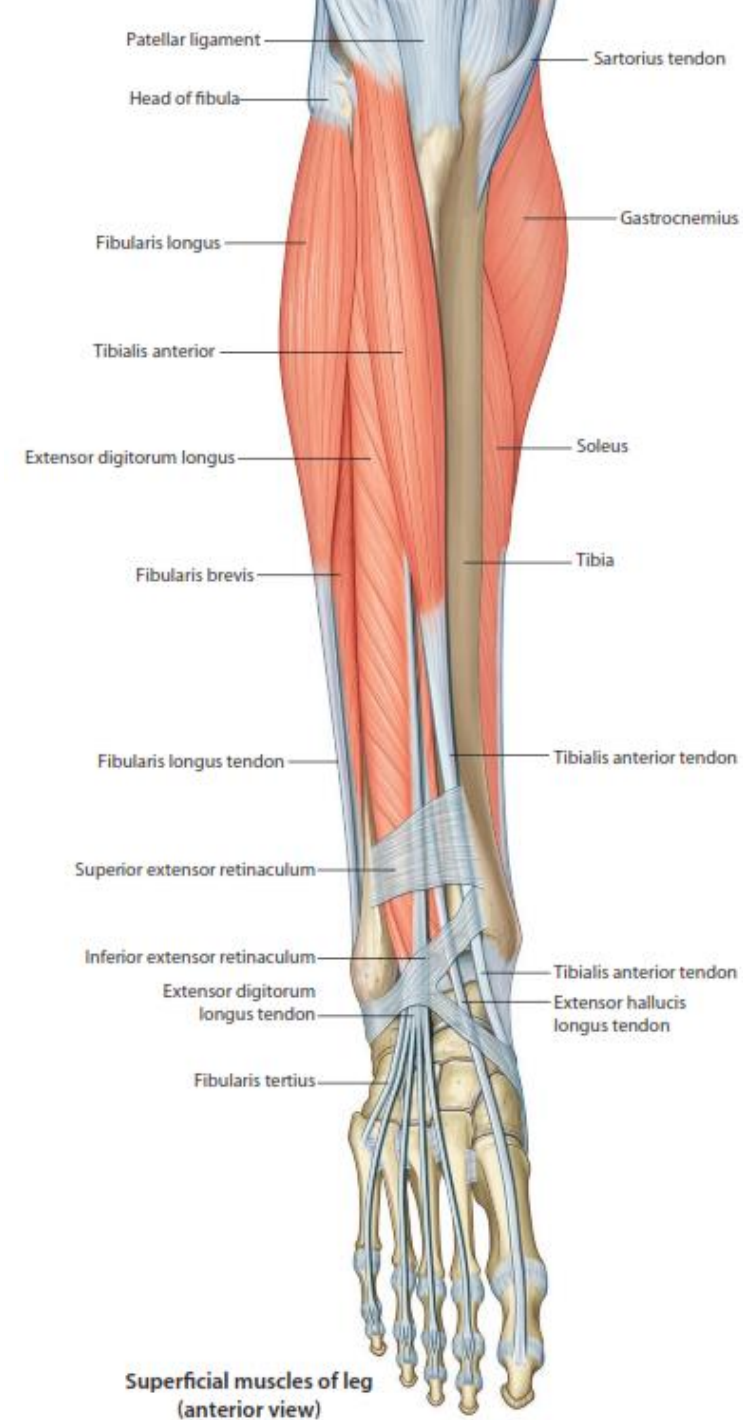
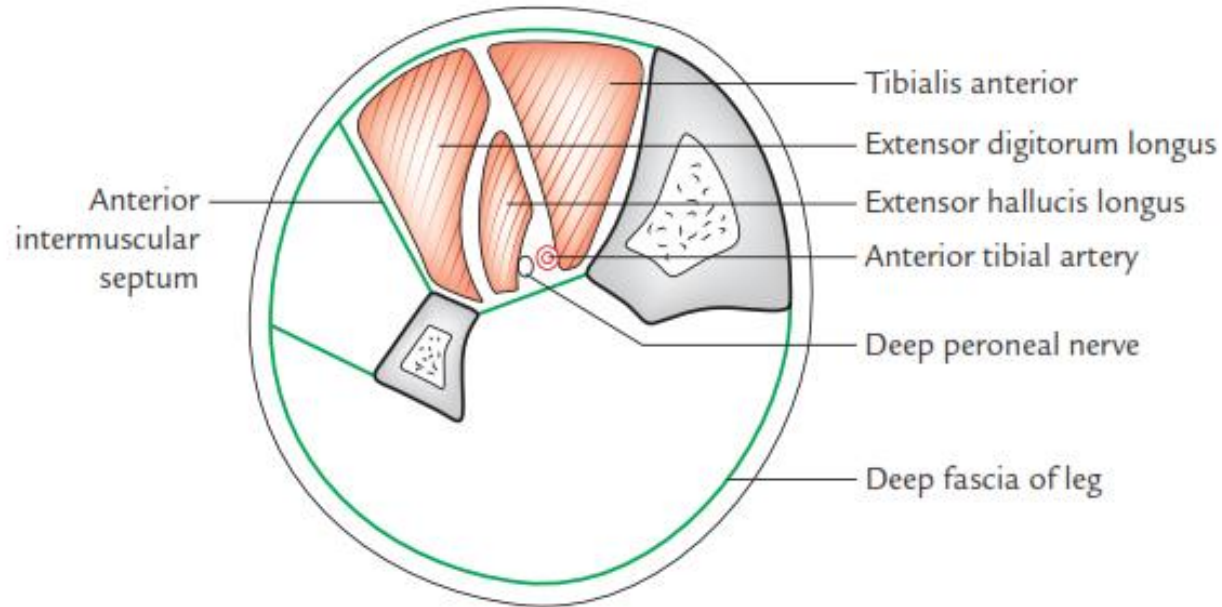
b. Anatomical

c. Plantar flexion

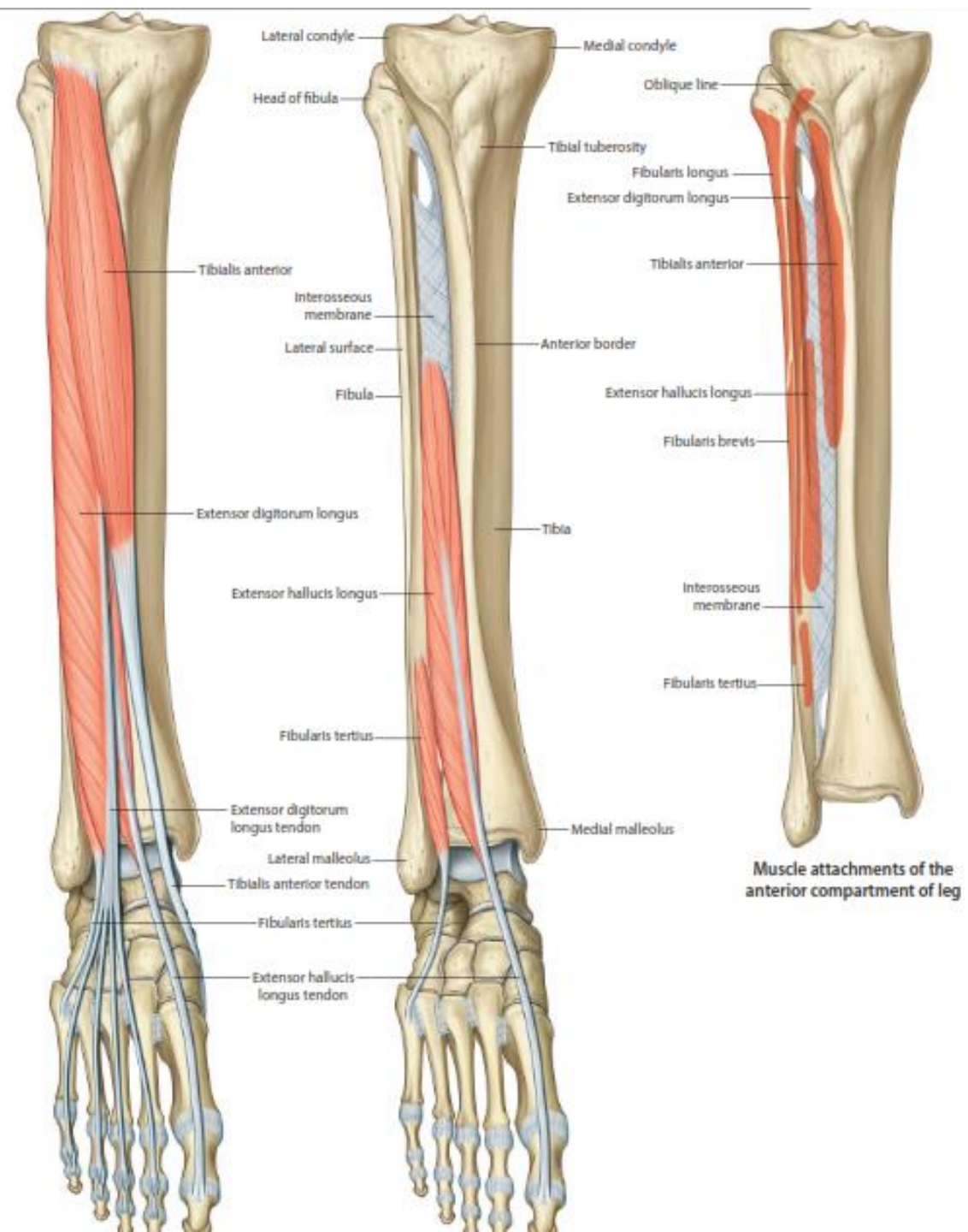
(c)



Anterior compartments



Muscles of the anterior compartment of foot



Tibialis anterior

3

4

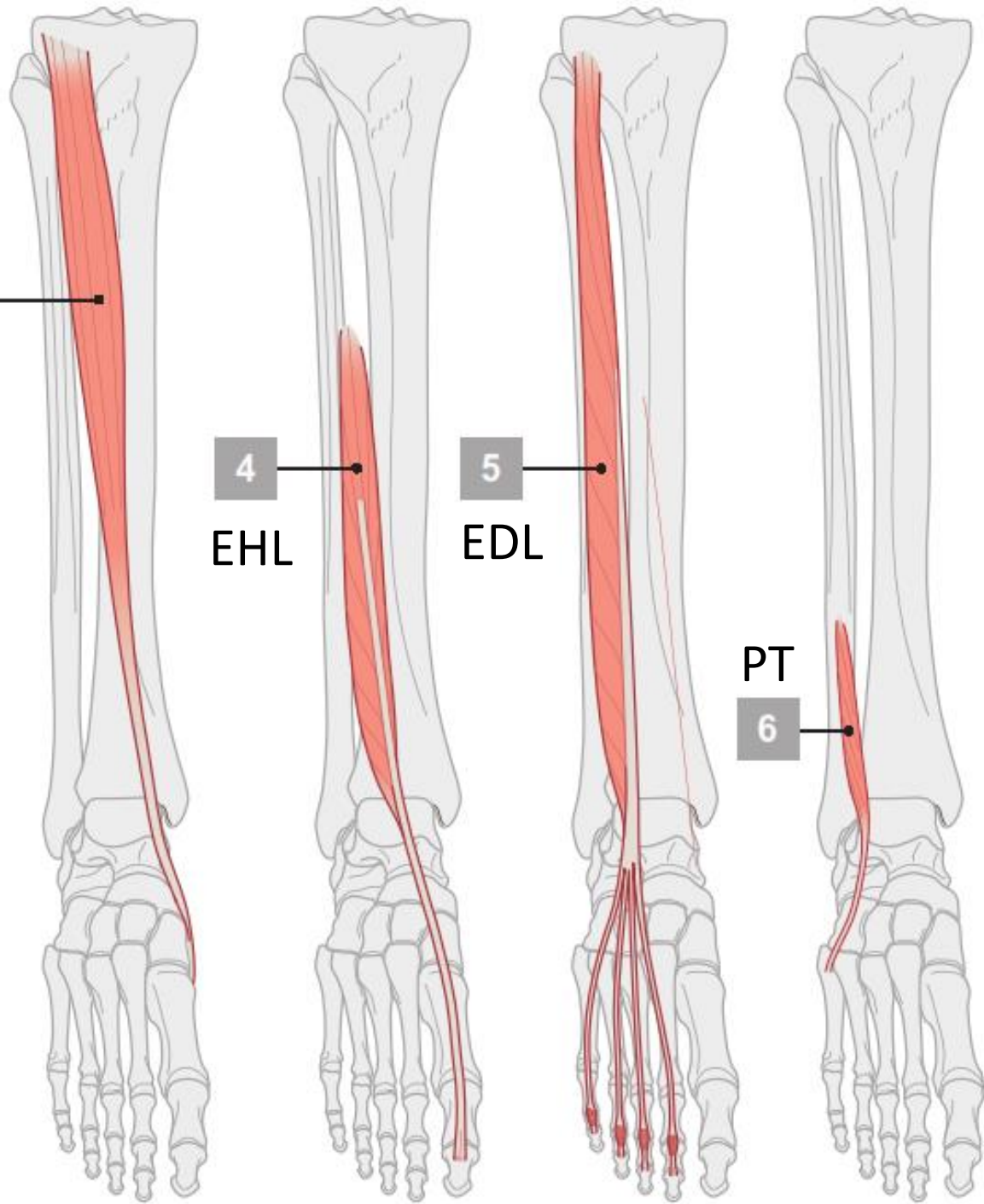
EHL

5

EDL

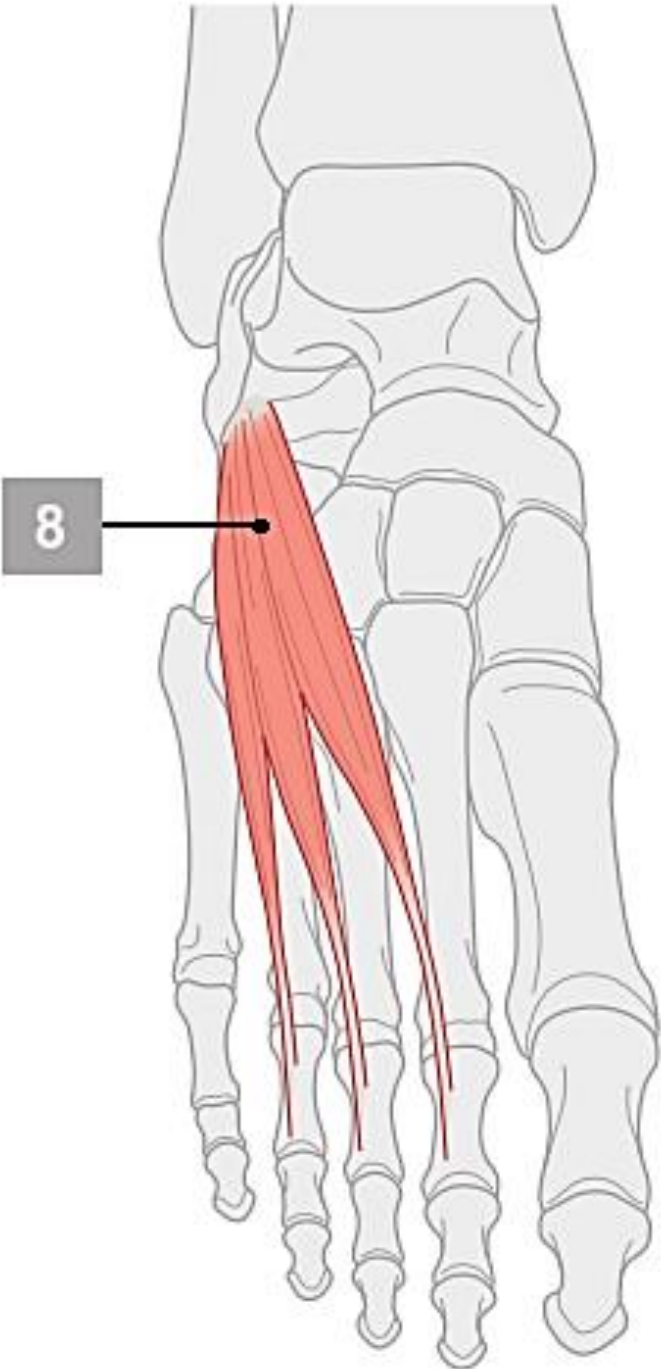
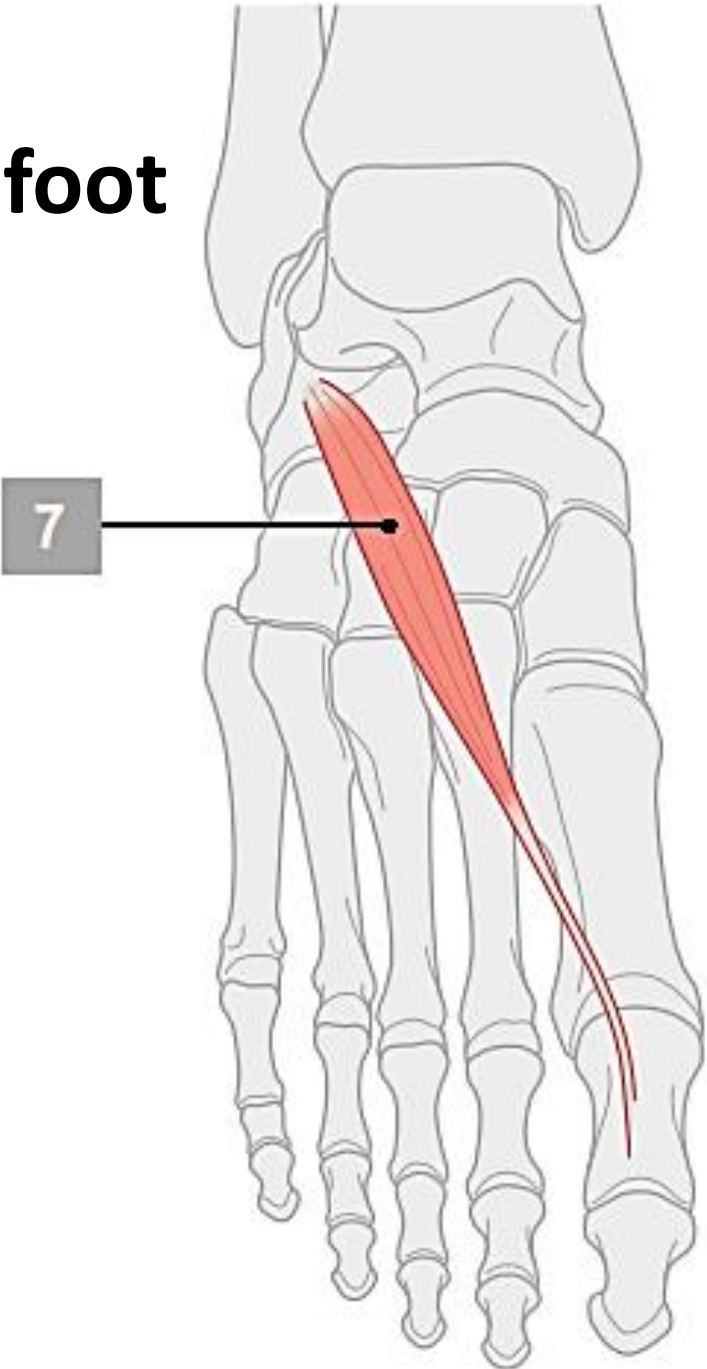
PT

6

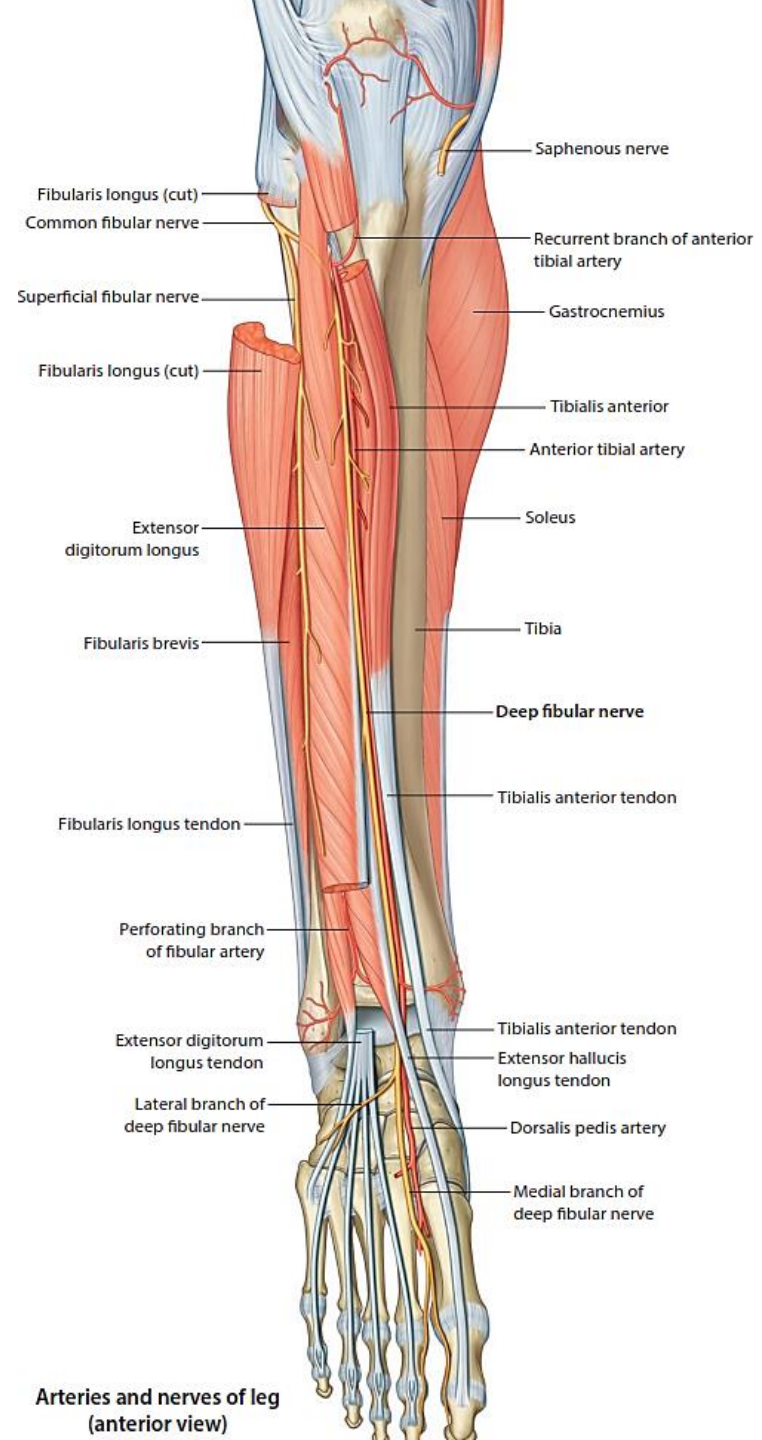
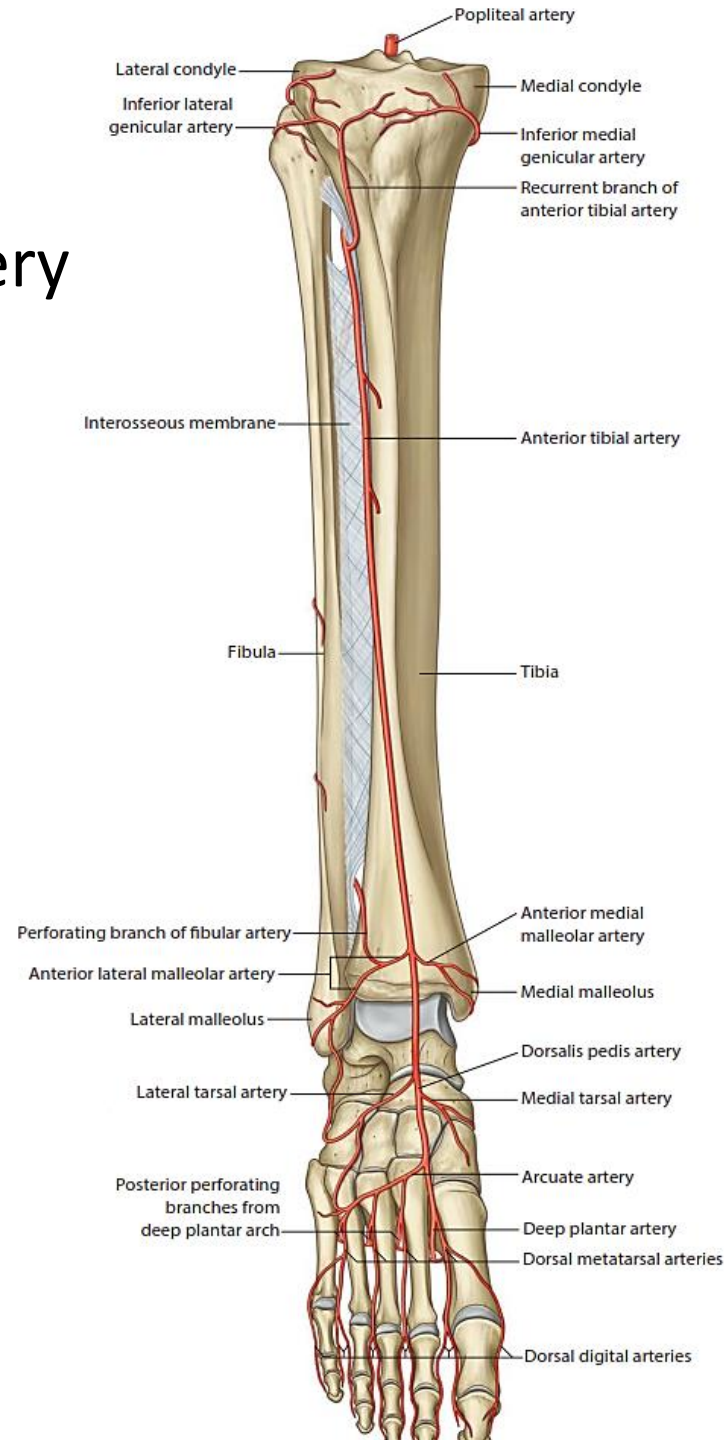


Muscles of the dorsum of foot

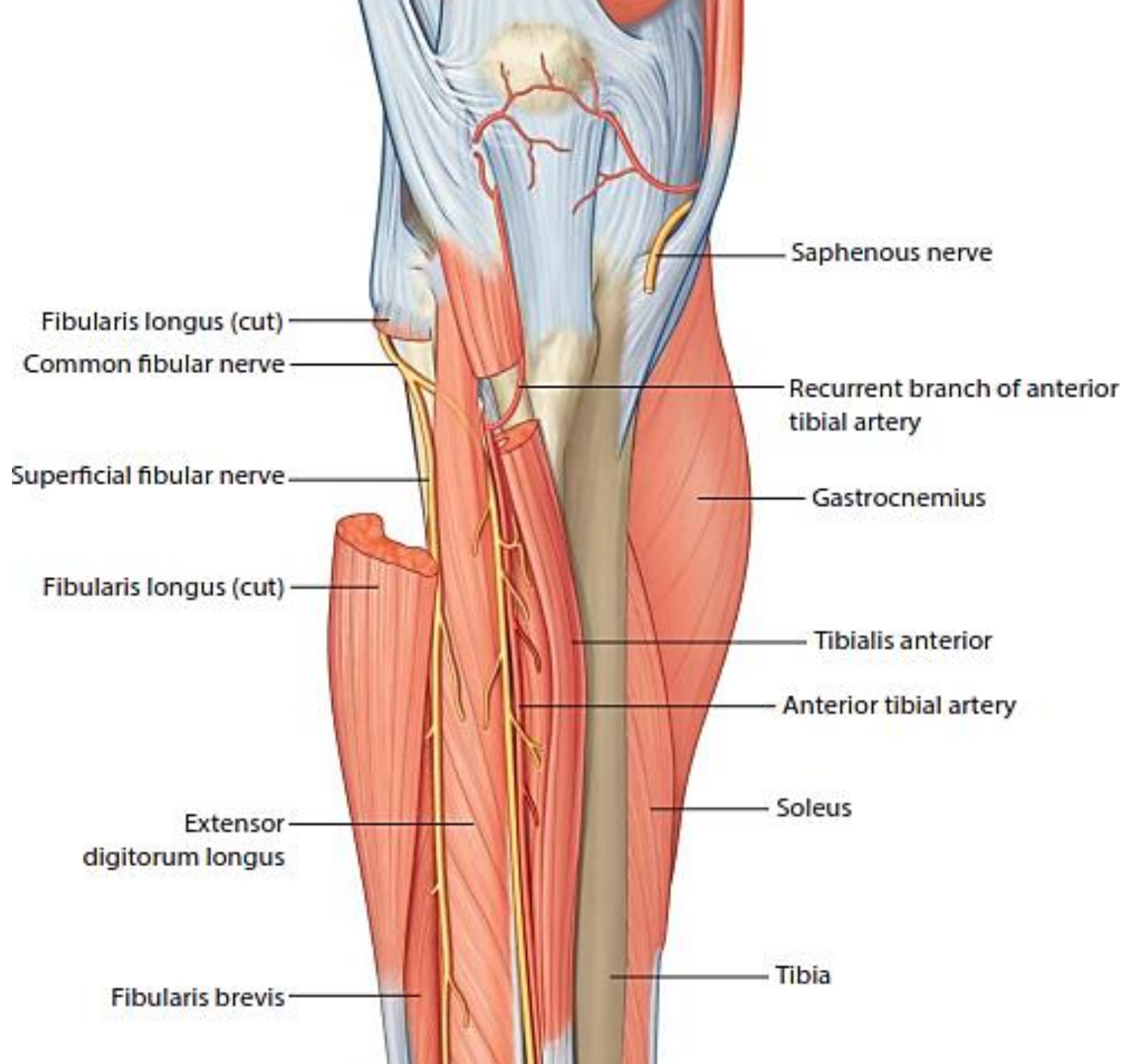
- Extensor digitorum brevis
- Extensor hallucis brevis

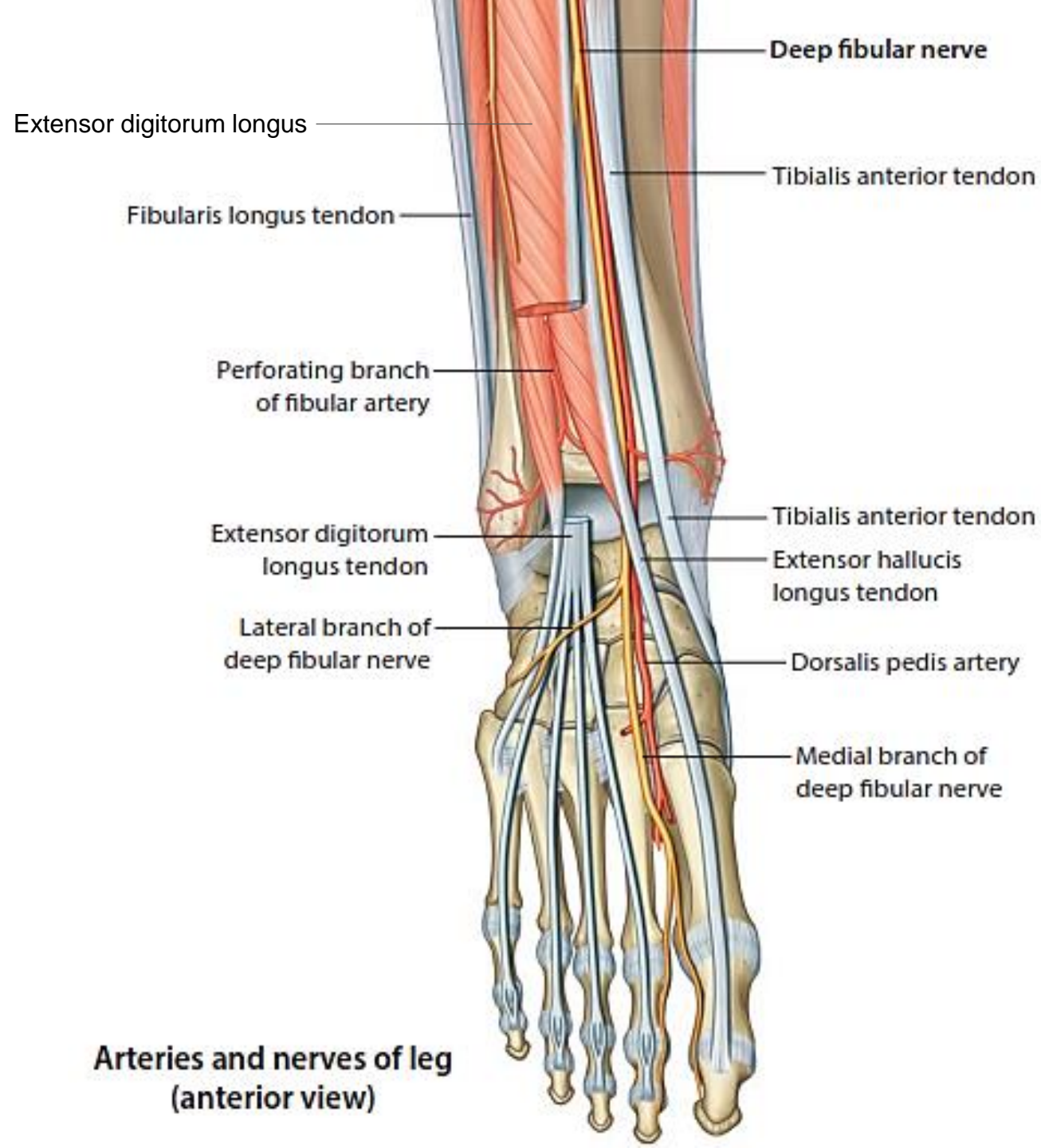


Anterior tibial artery



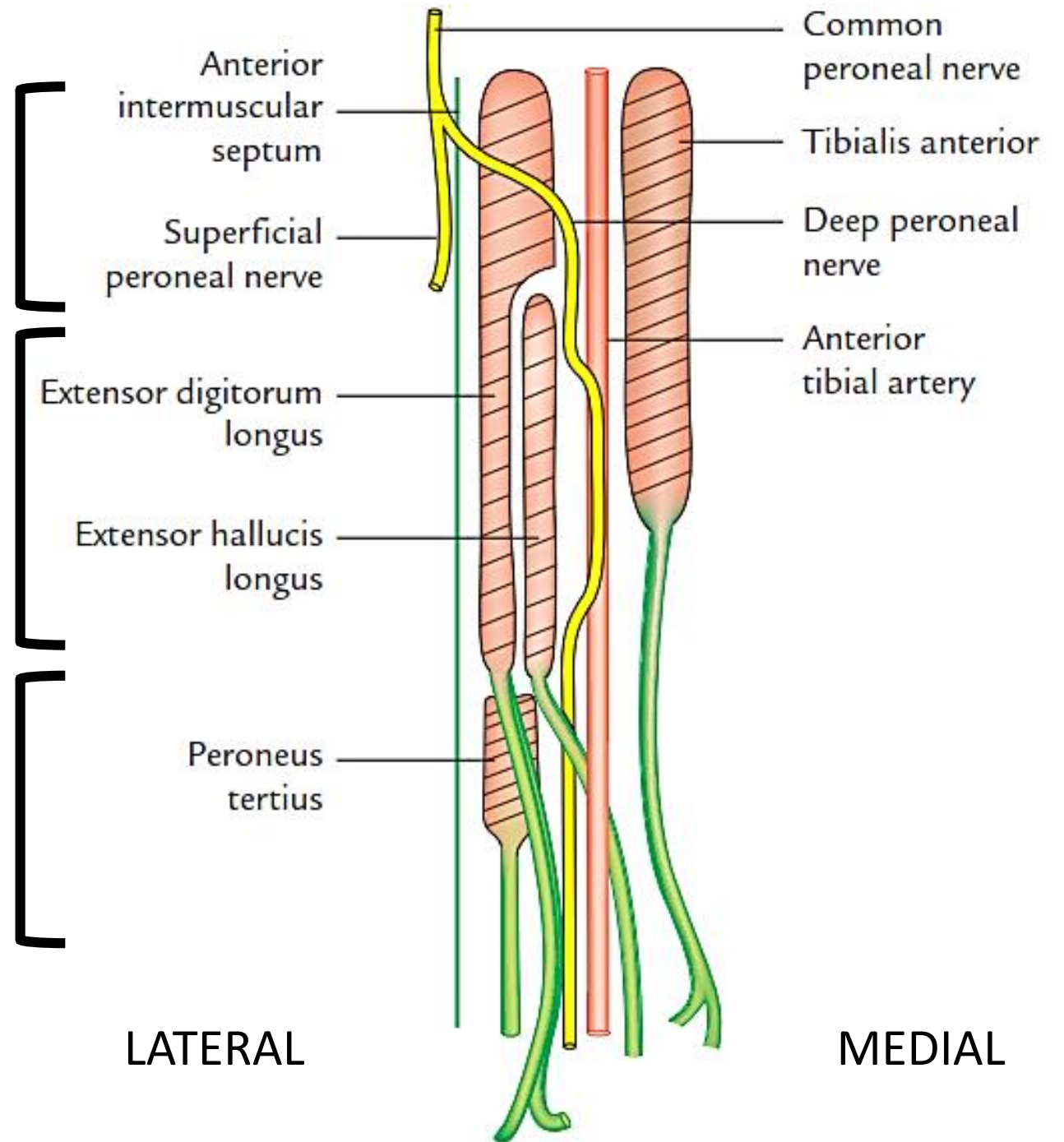
Arteries and nerves of leg (anterior view)



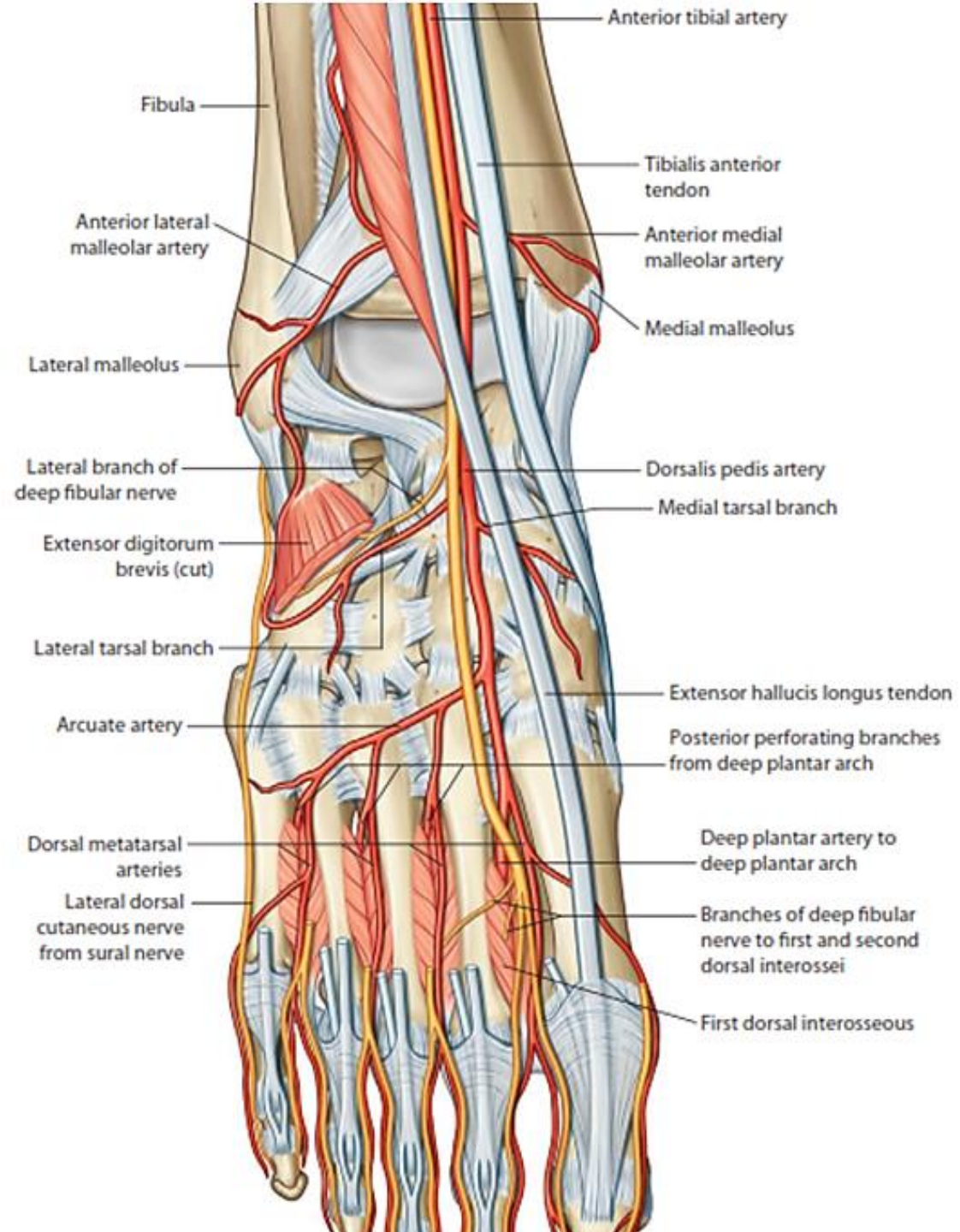


**Arteries and nerves of leg
(anterior view)**

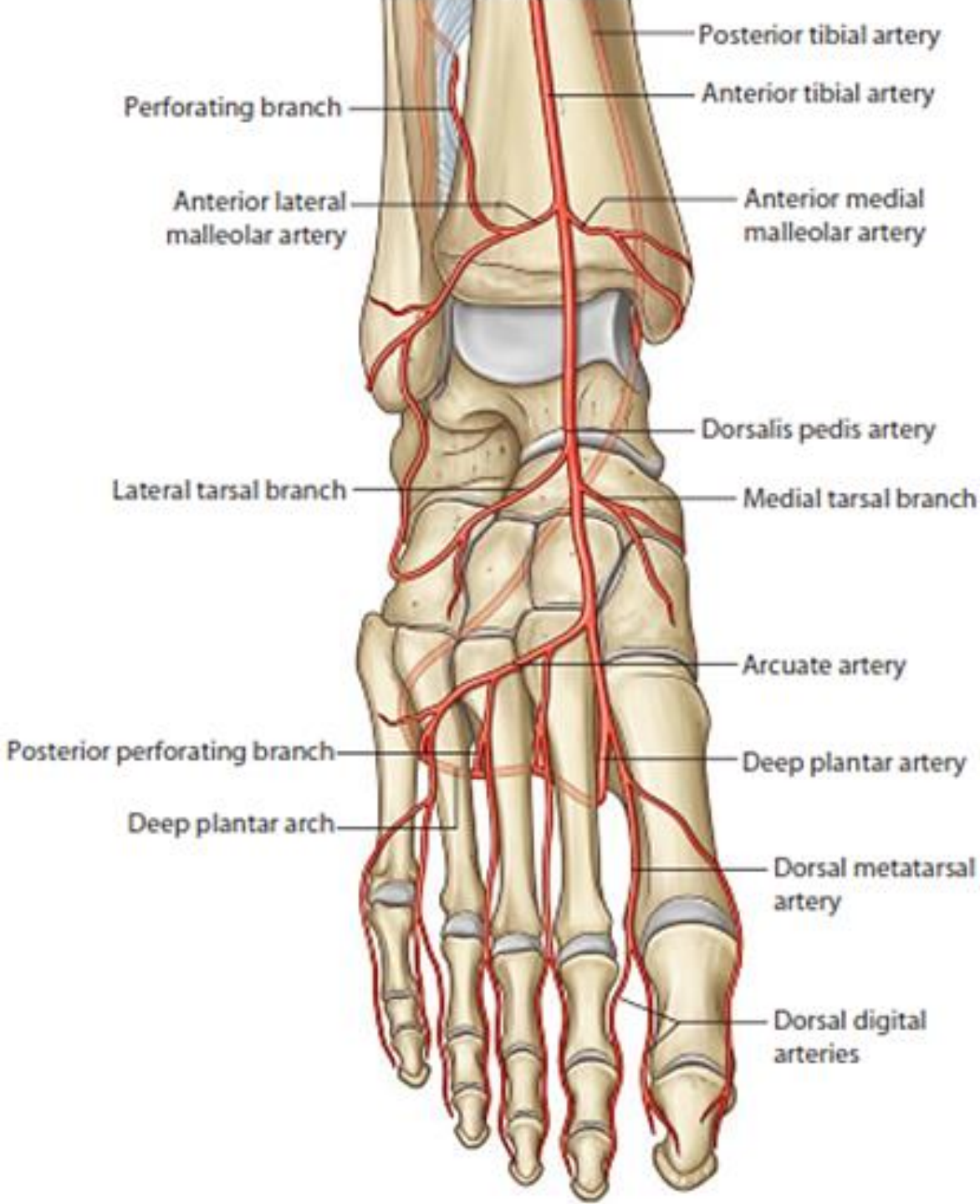
Relations of the ant. tibial artery
And deep peroneal nerve
(nervus hesitans)!



Dorsalis pedis artery



Dorsalis pedis artery branches





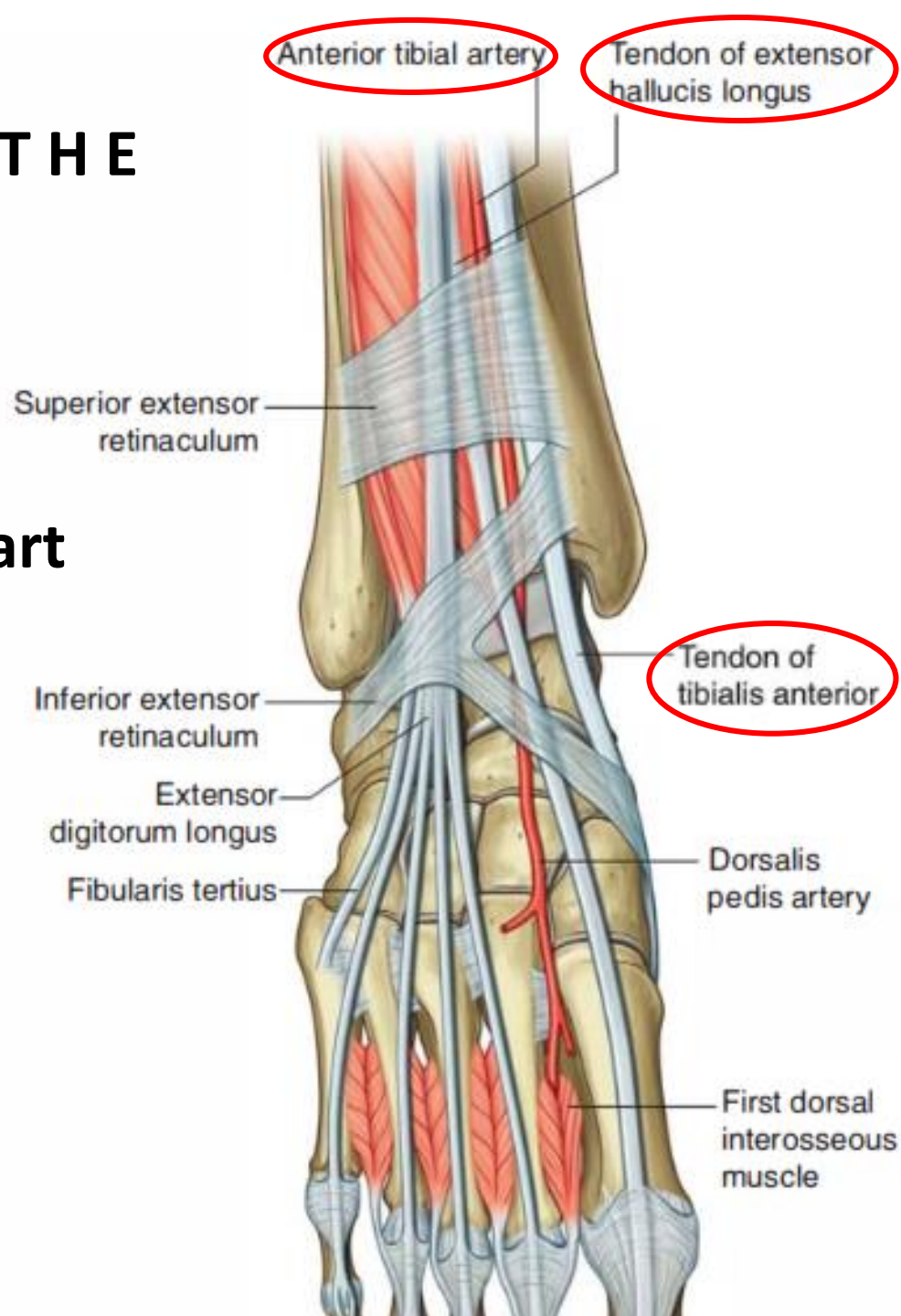
dorsalis pedis pulse

Superior extensor retinaculum -> T H E

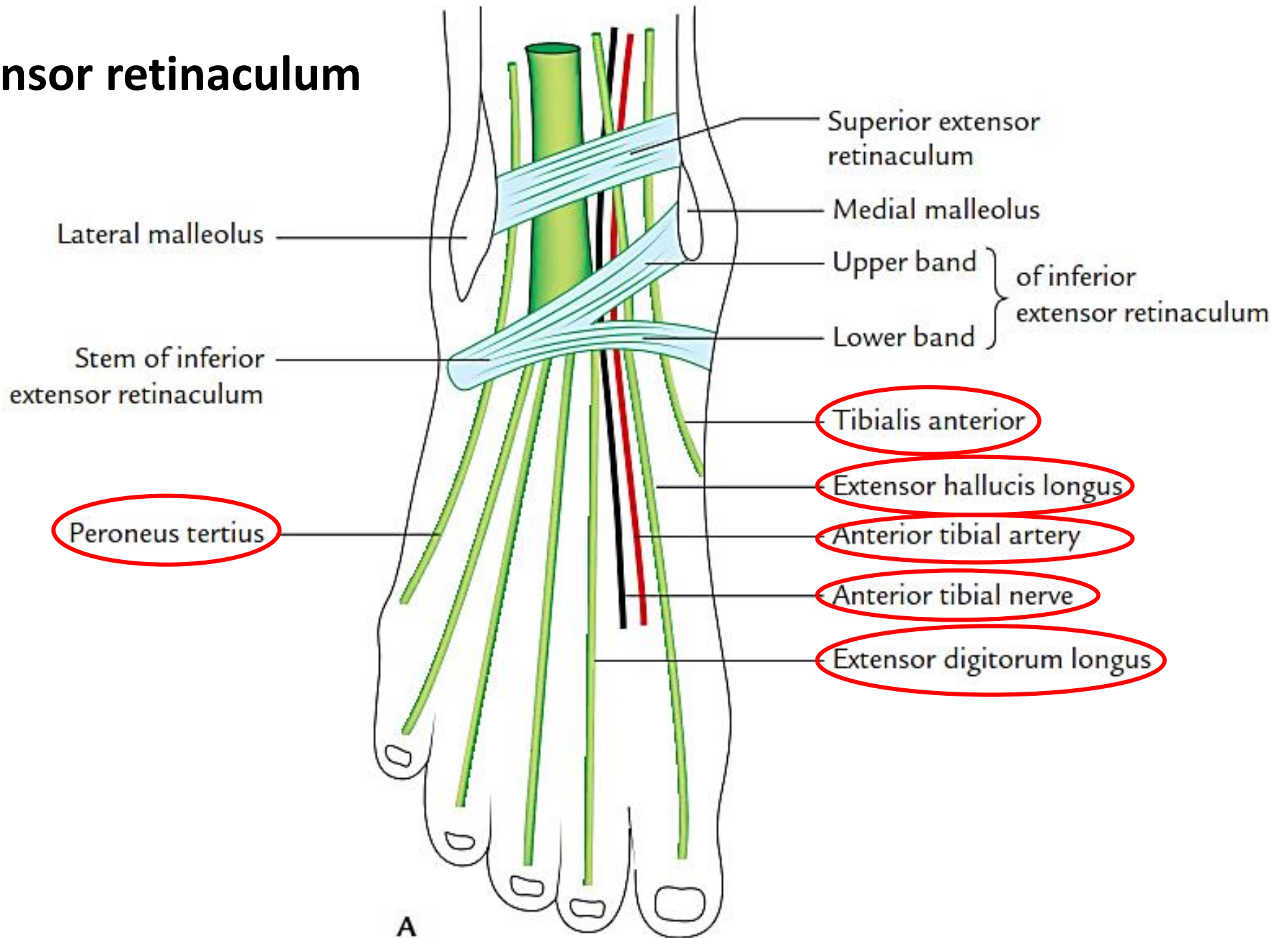
T : Tibialis anterior + Ant. Tibial art

H: EHL

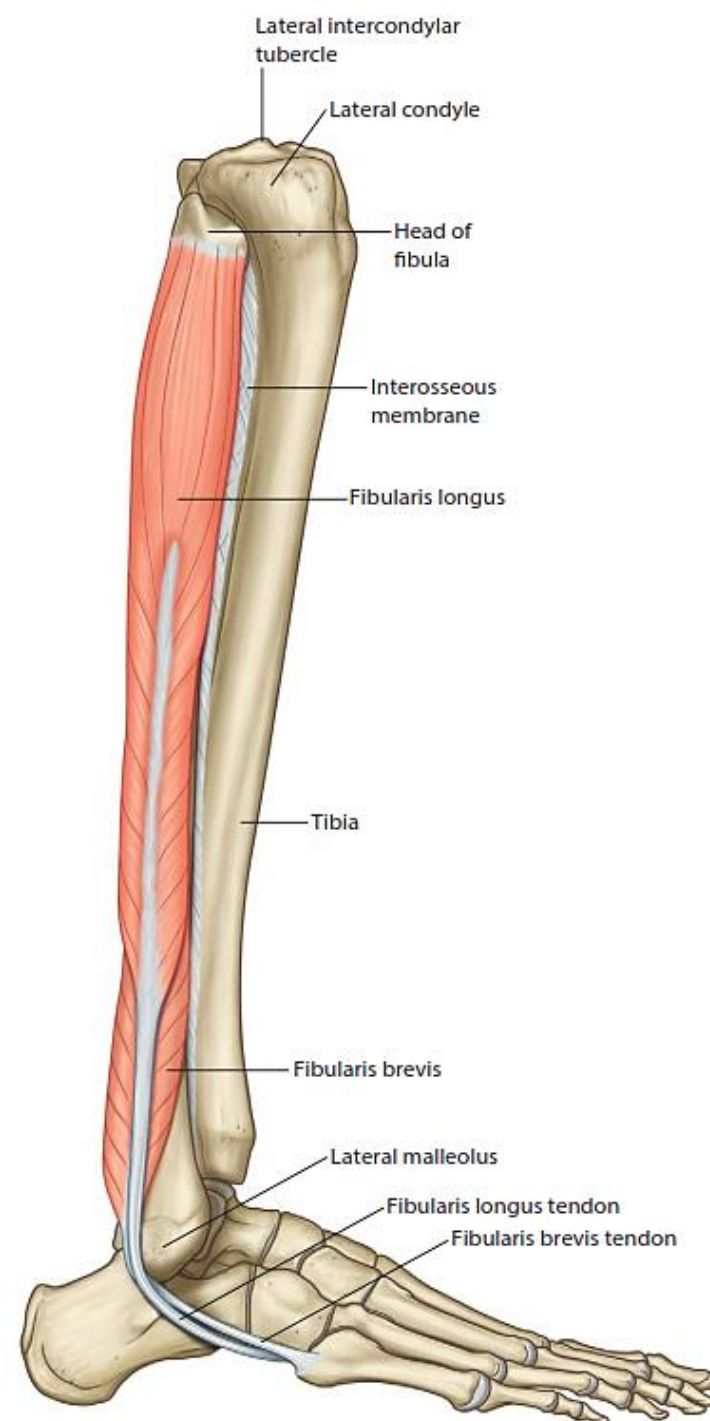
E: EDL

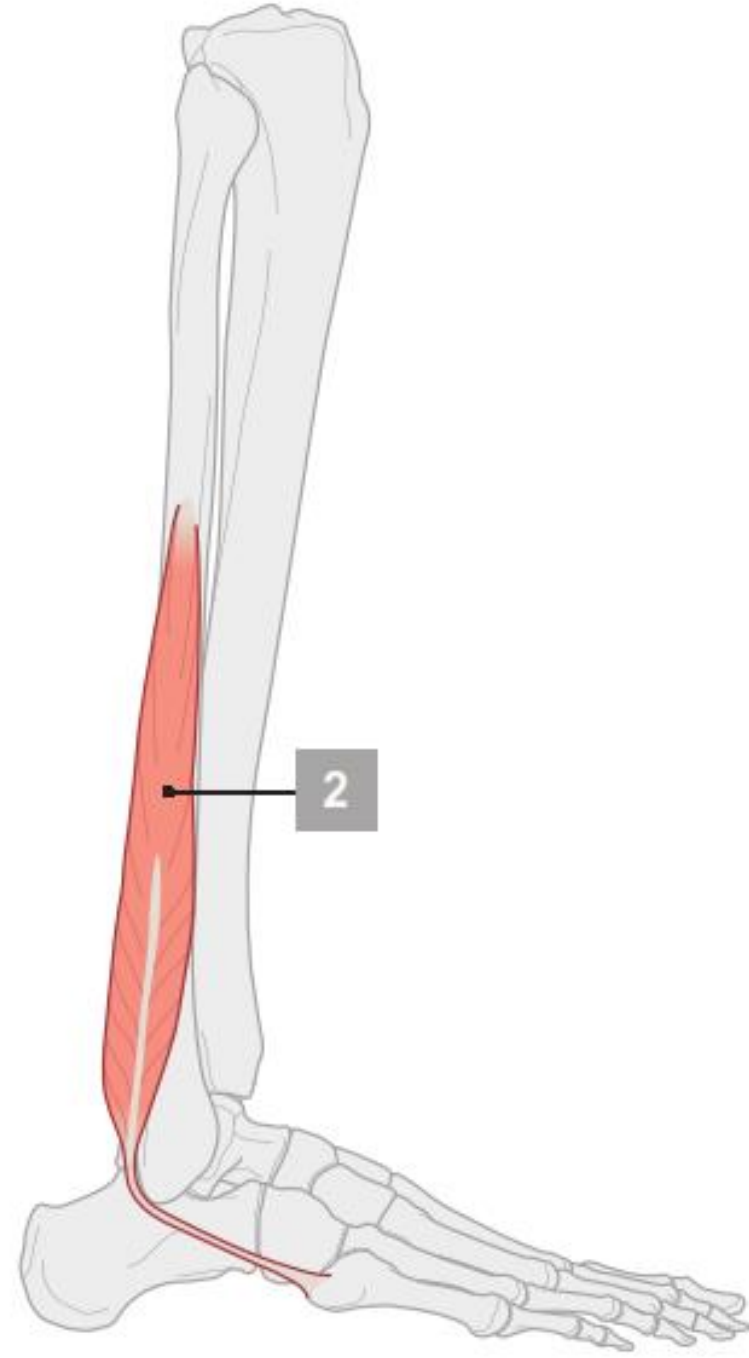
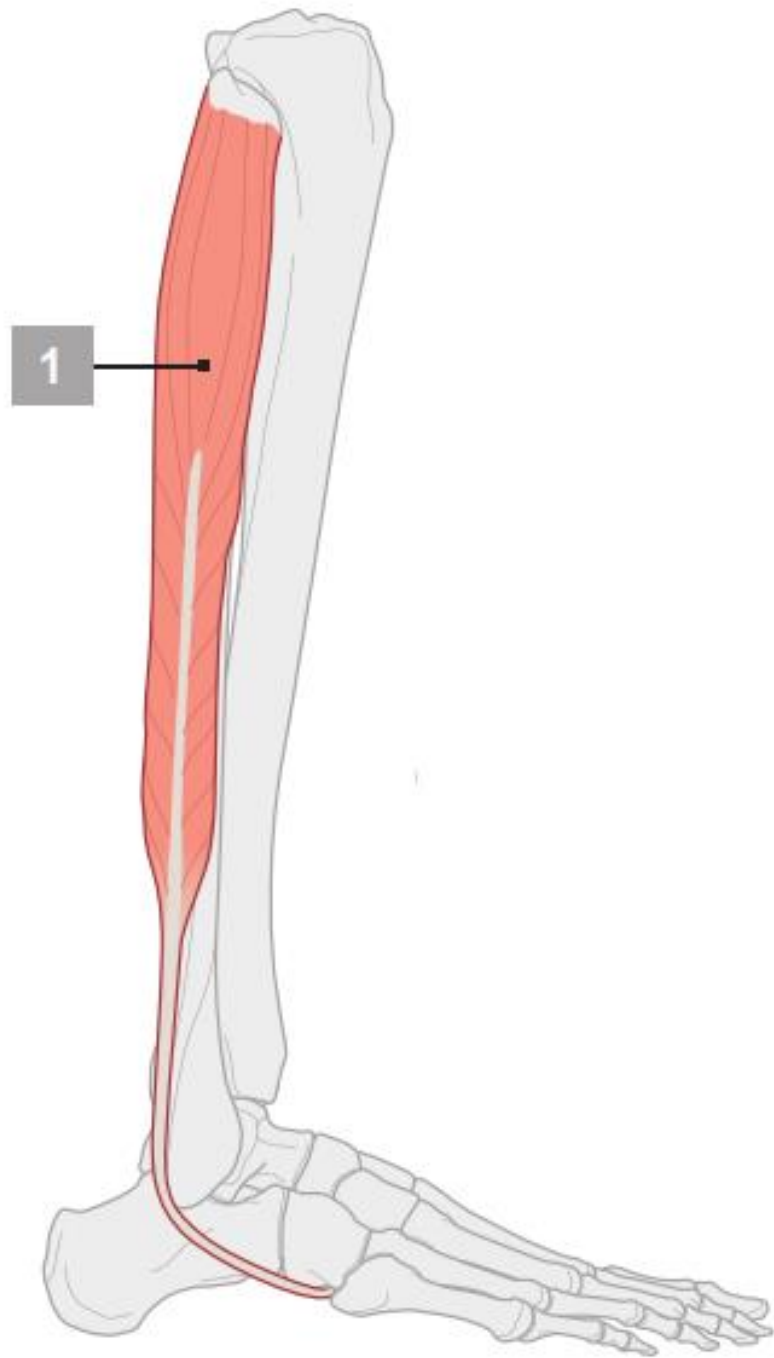


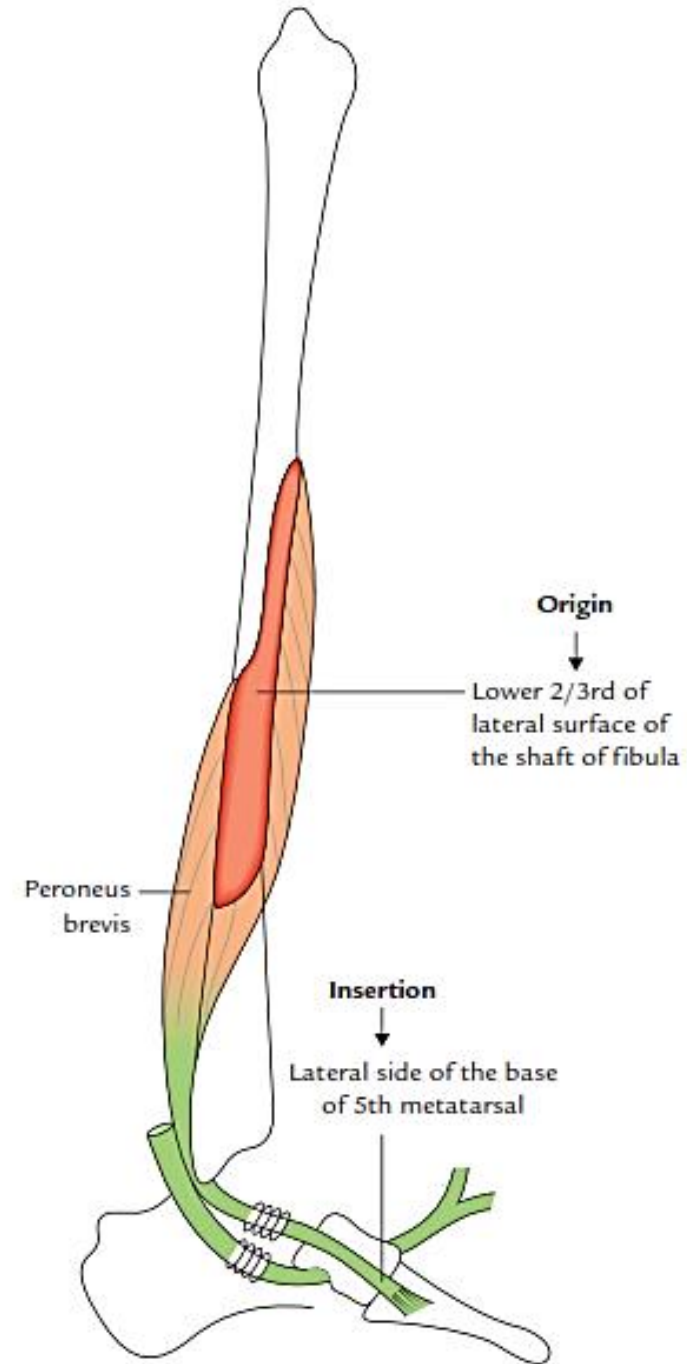
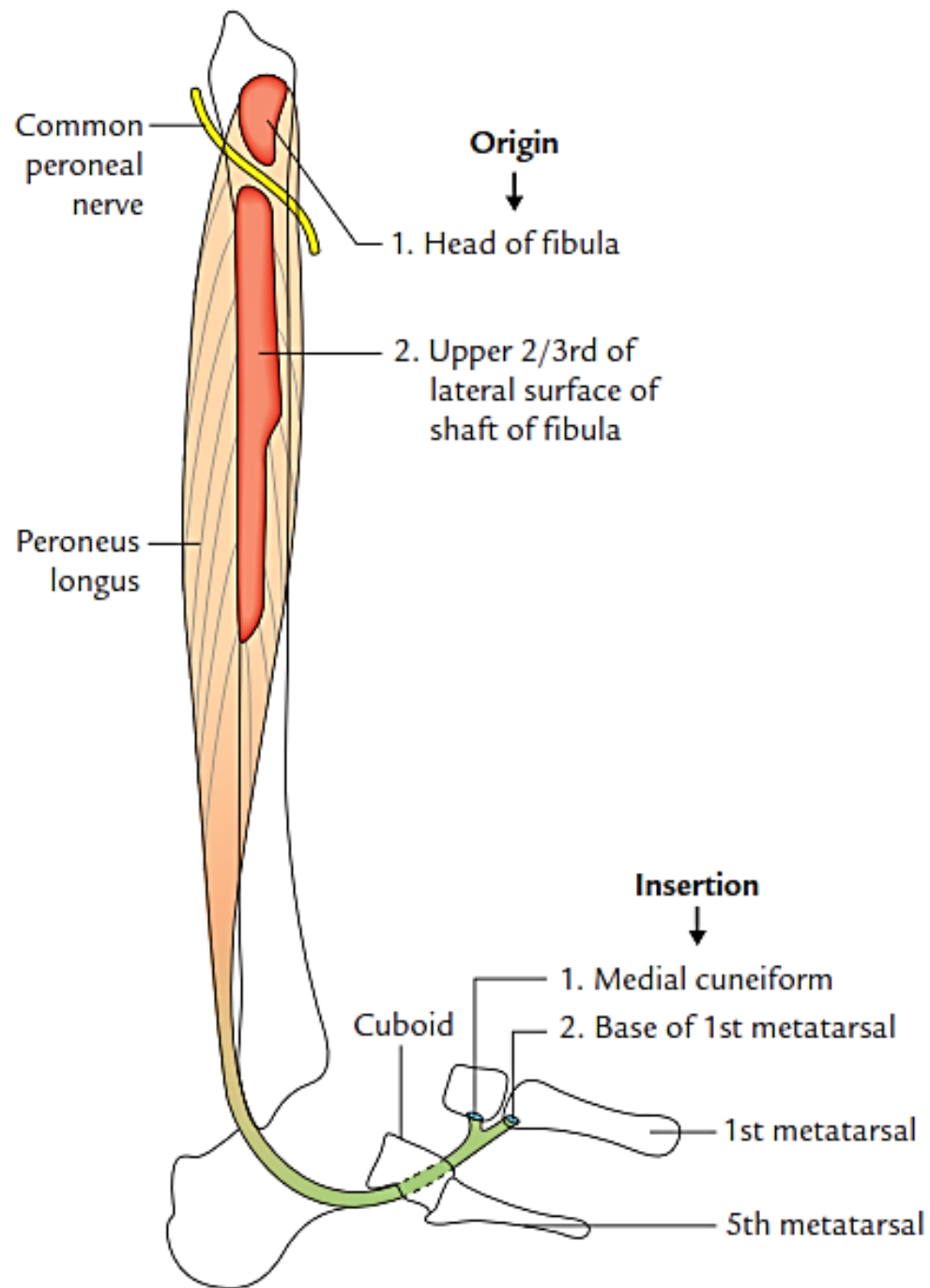
Inferior extensor retinaculum



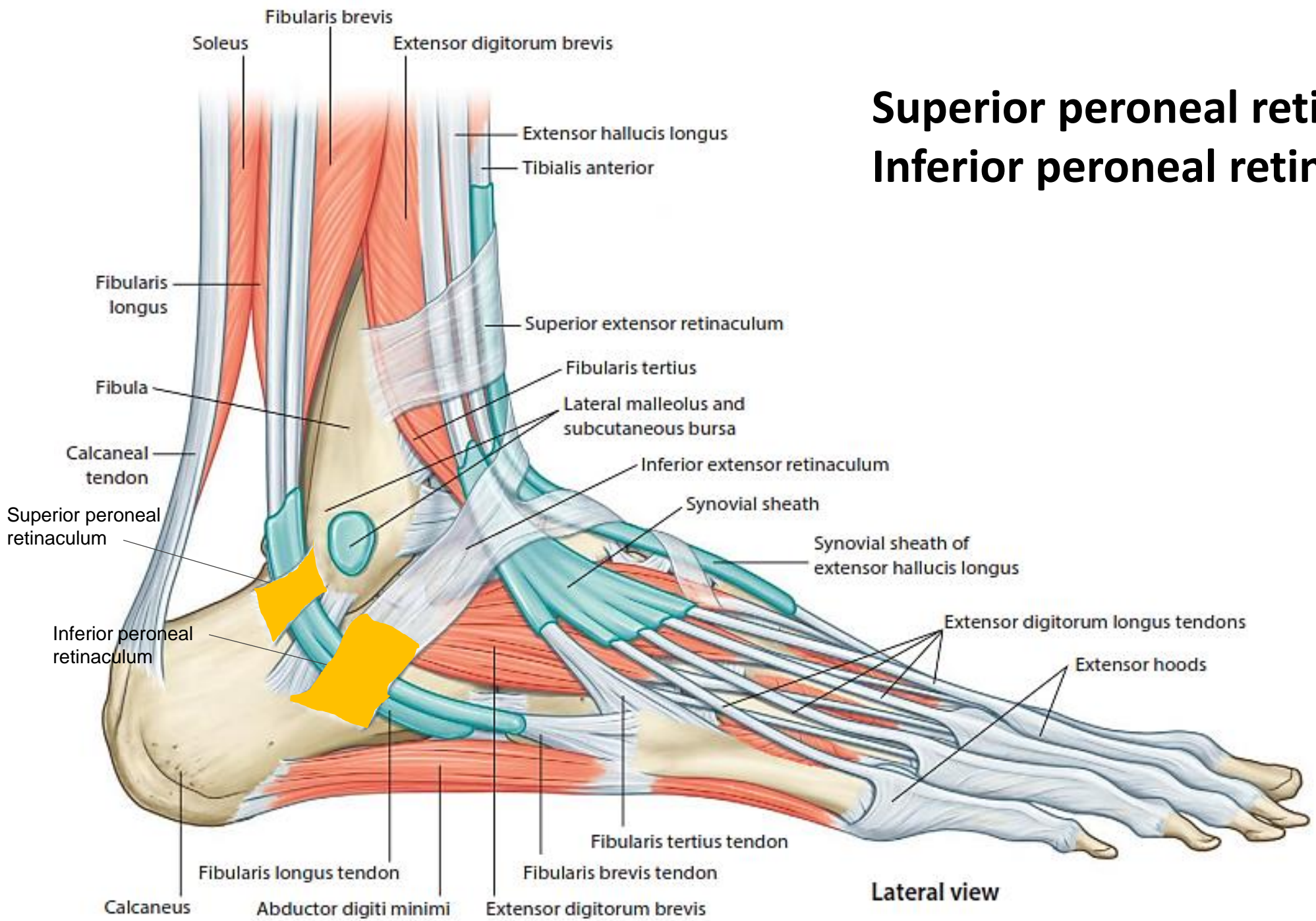
- Lateral compartment





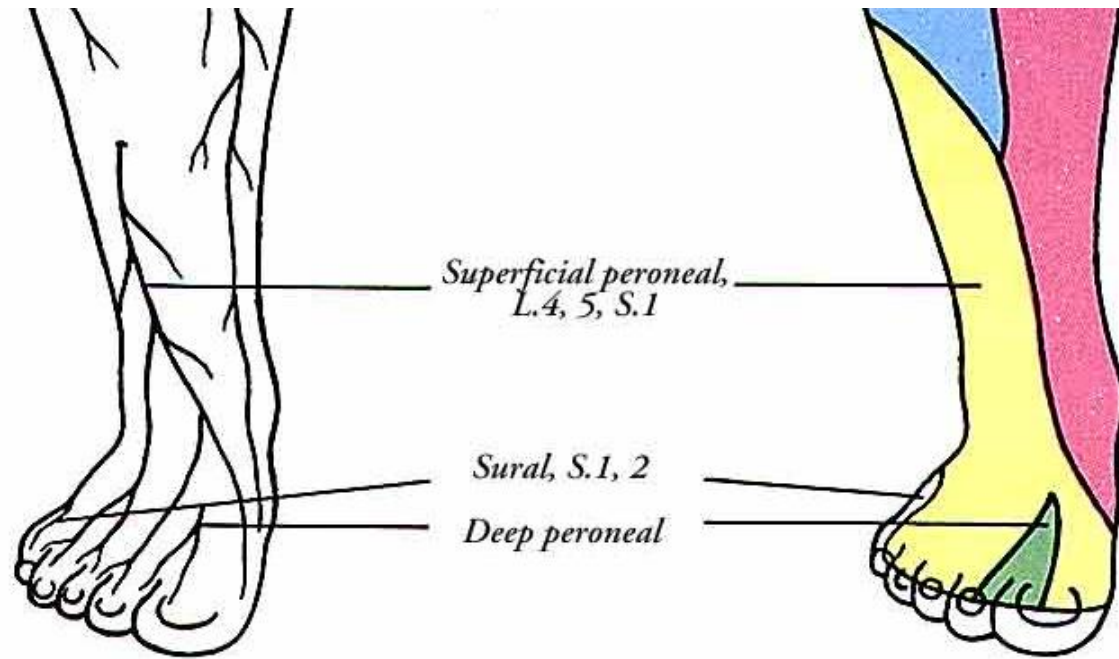


Superior peroneal retinaculum Inferior peroneal retinaculum

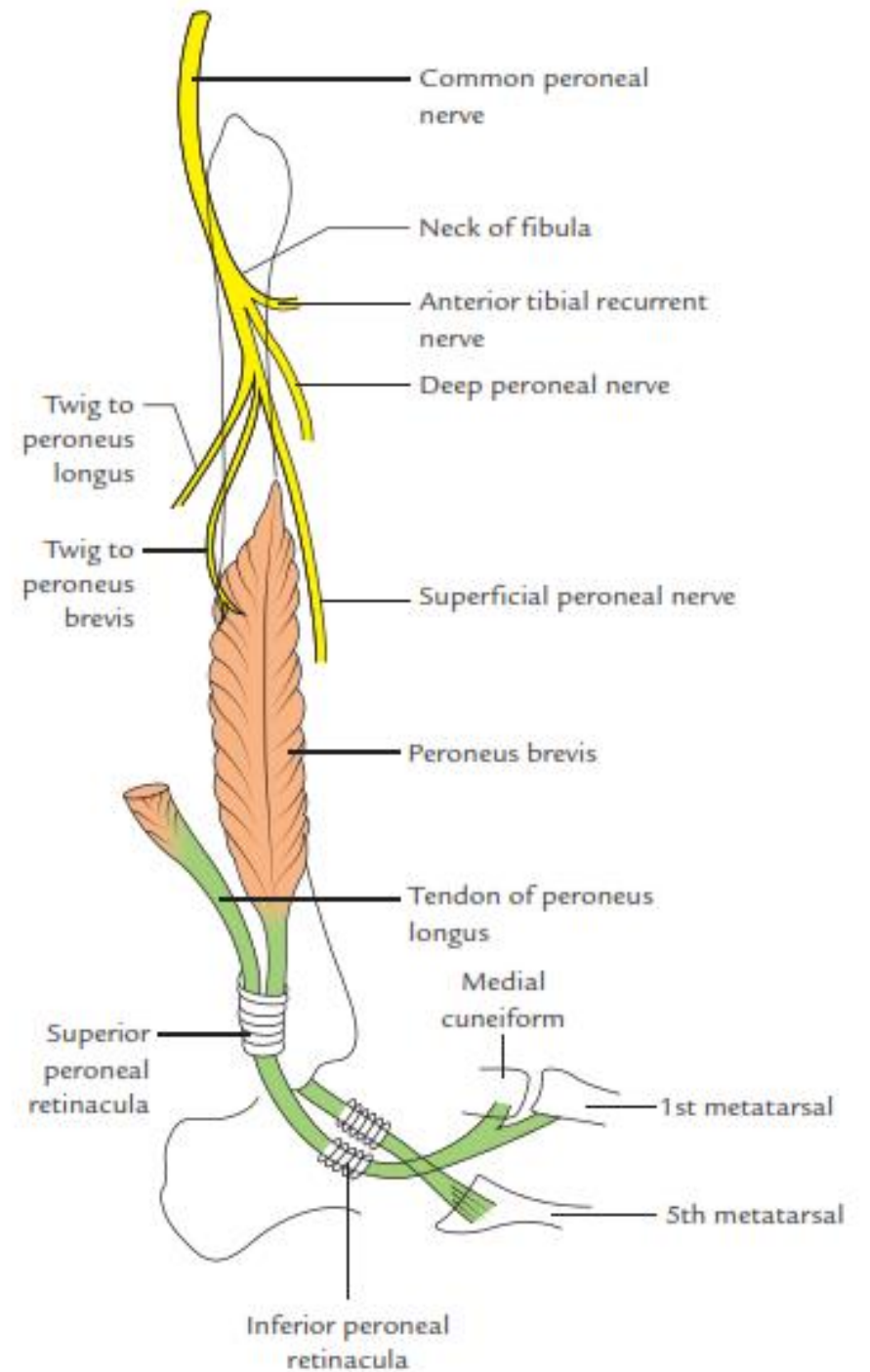


Lateral view

Superficial peroneal nerve



Cutaneous branch



Clinical correlation

Talipes varus & Talipes valgus

Talus: ankle

Pes: foot

Varus : turned inward

Valgus: turned outward

- Superficial peroneal nerve injury ?
- Deep peroneal nerve injury ?



Talipes Varus



Talipes Valgus