

Dr Maan Al-Abbasi
PhD, MSc, MBChB, MD

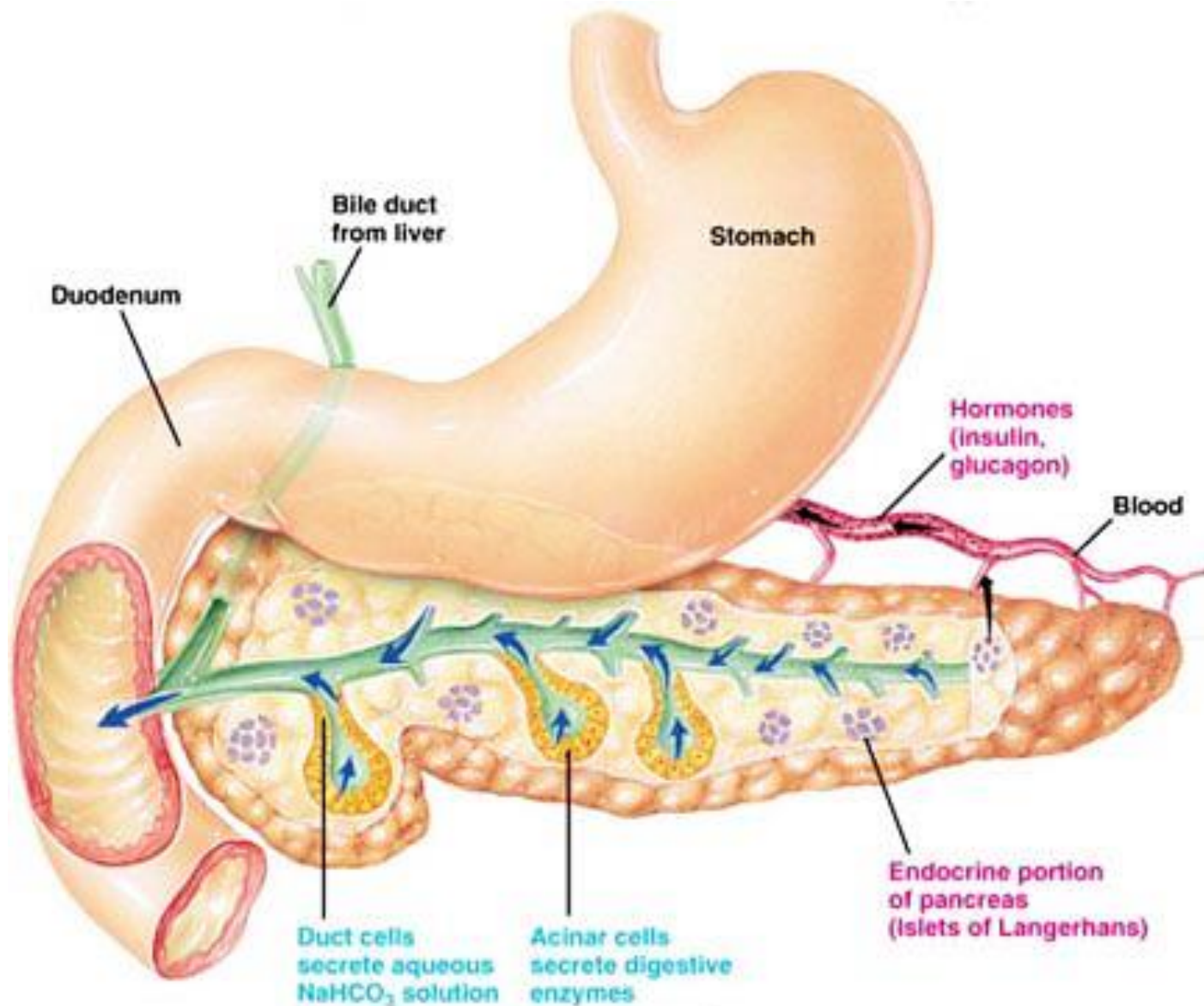
Anatomy of the Pancreas





Mami

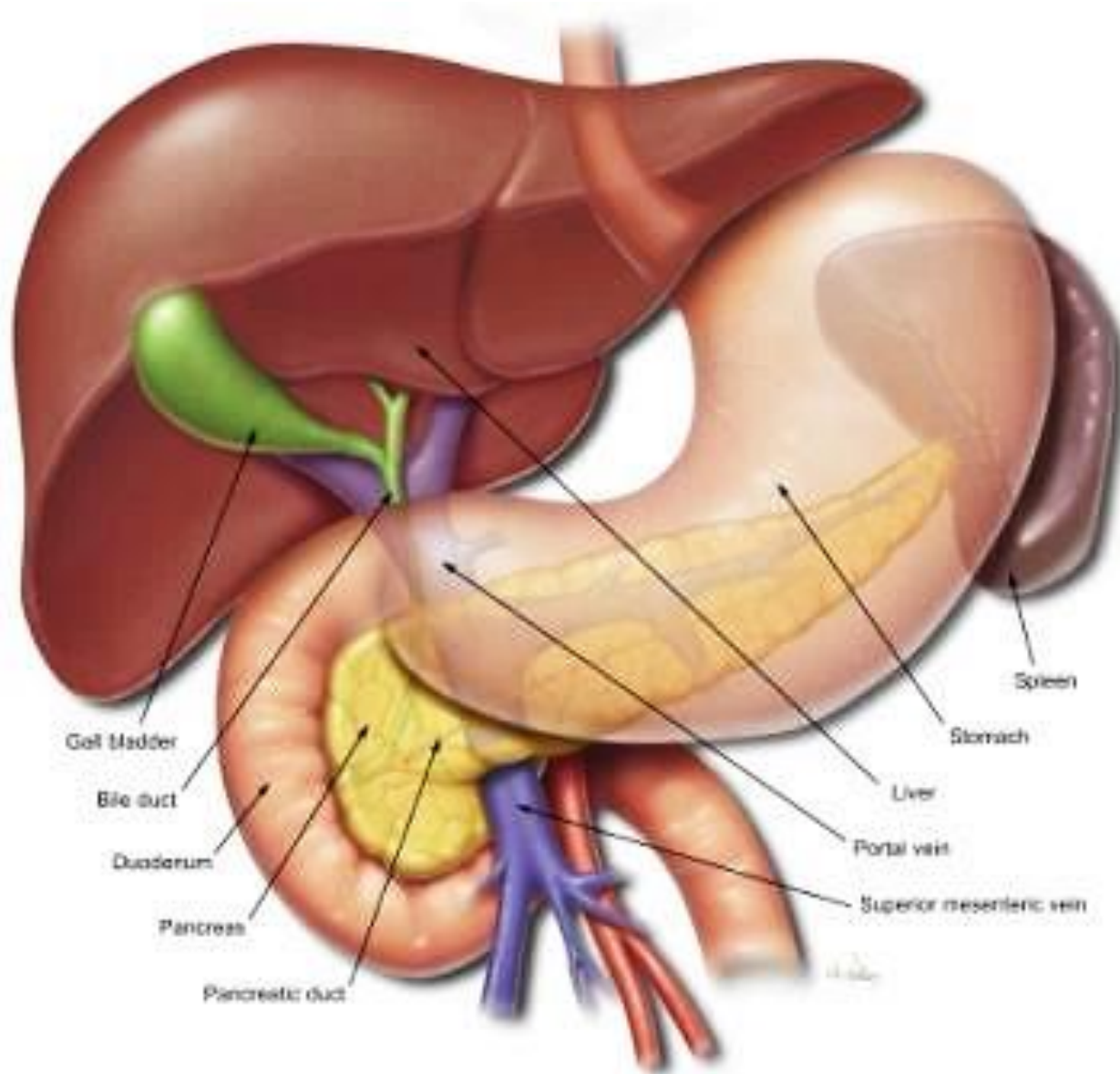
The pancreas produce



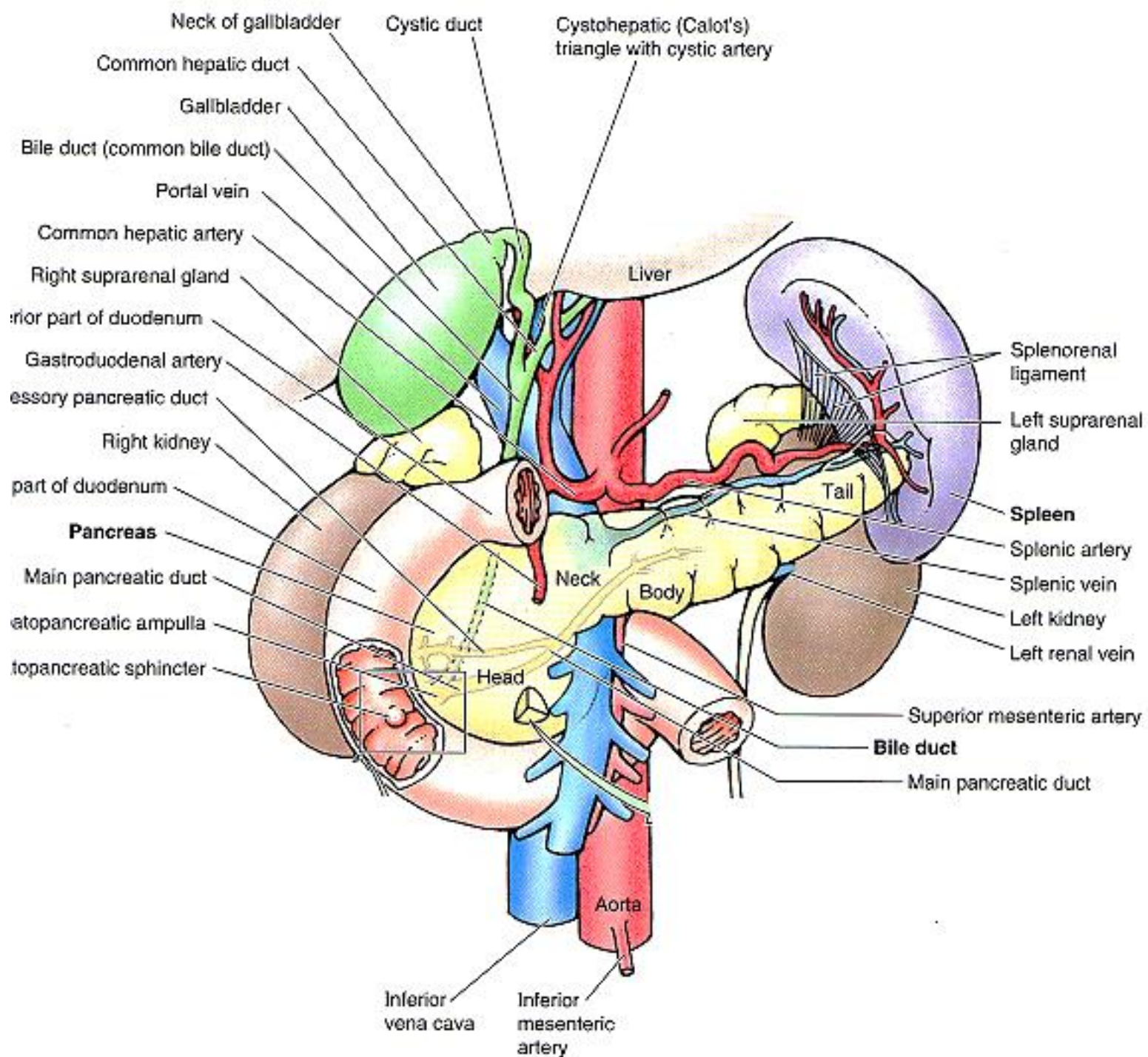
Learning Objective

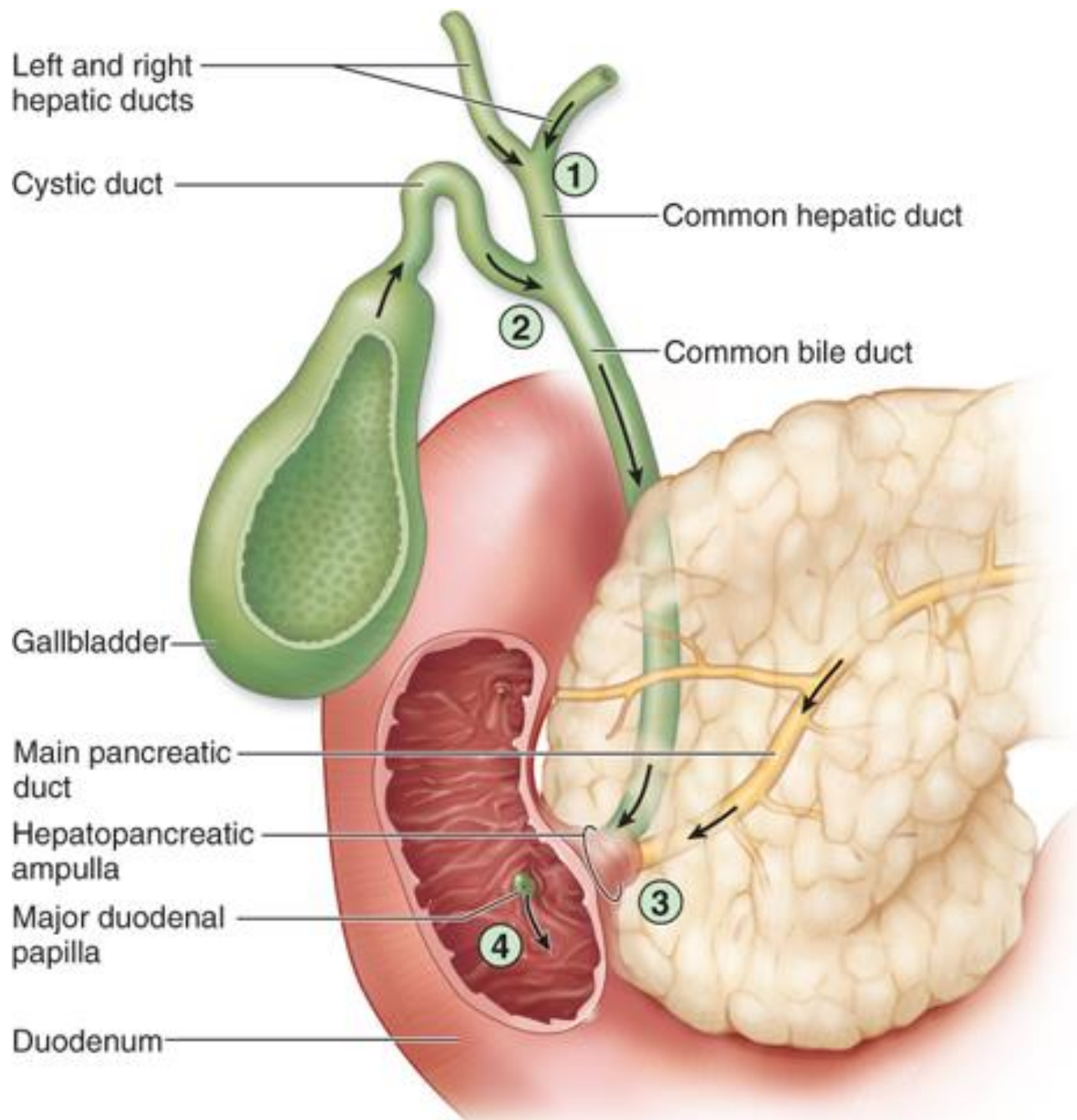
- Describe the position and form of the pancreas and its relations to other abdominal organs.

Location of pancreas

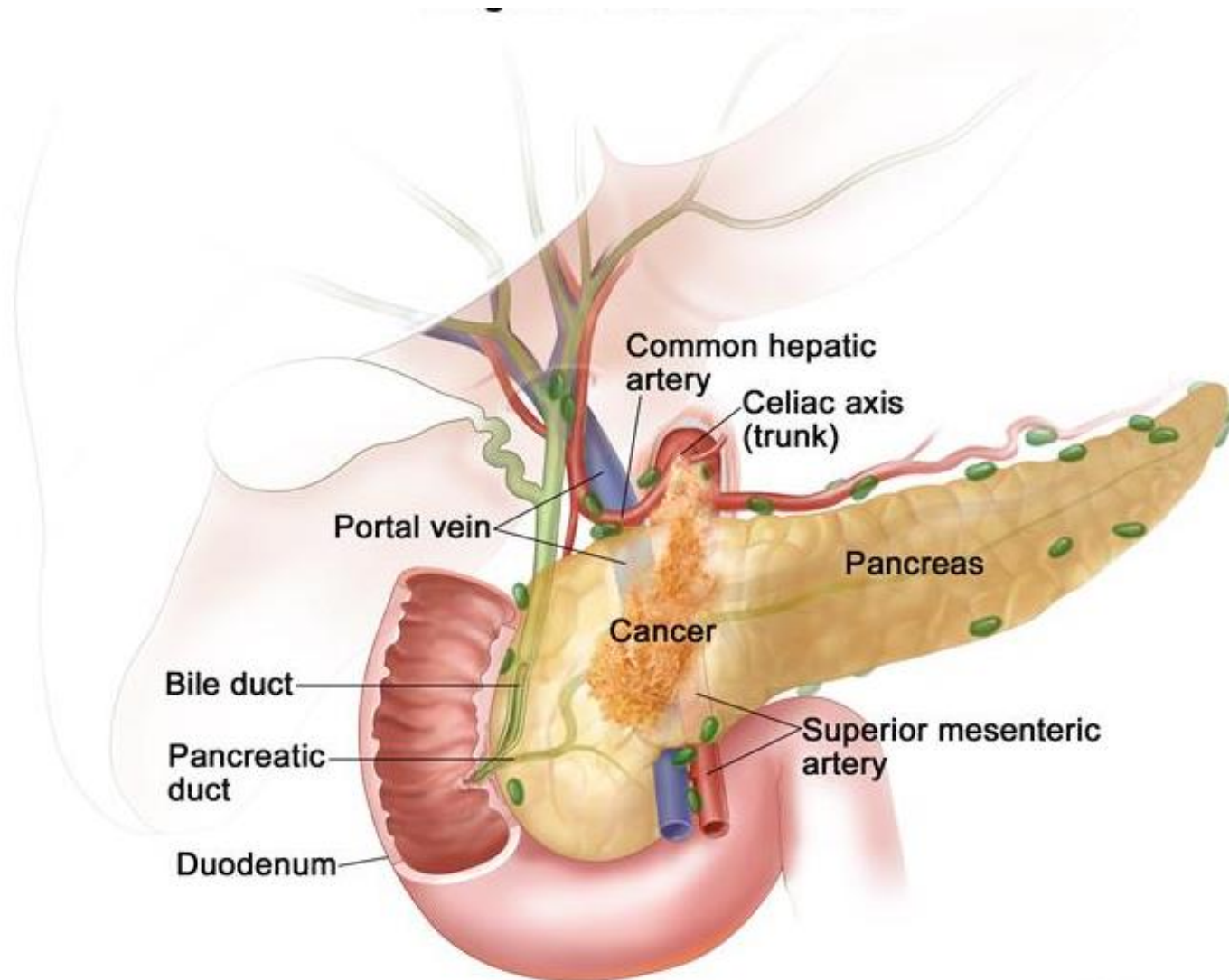


Relations





Pancreatic Tumor



Dr Maan Al-Abbasi
PhD, MSc, MBChB, MD

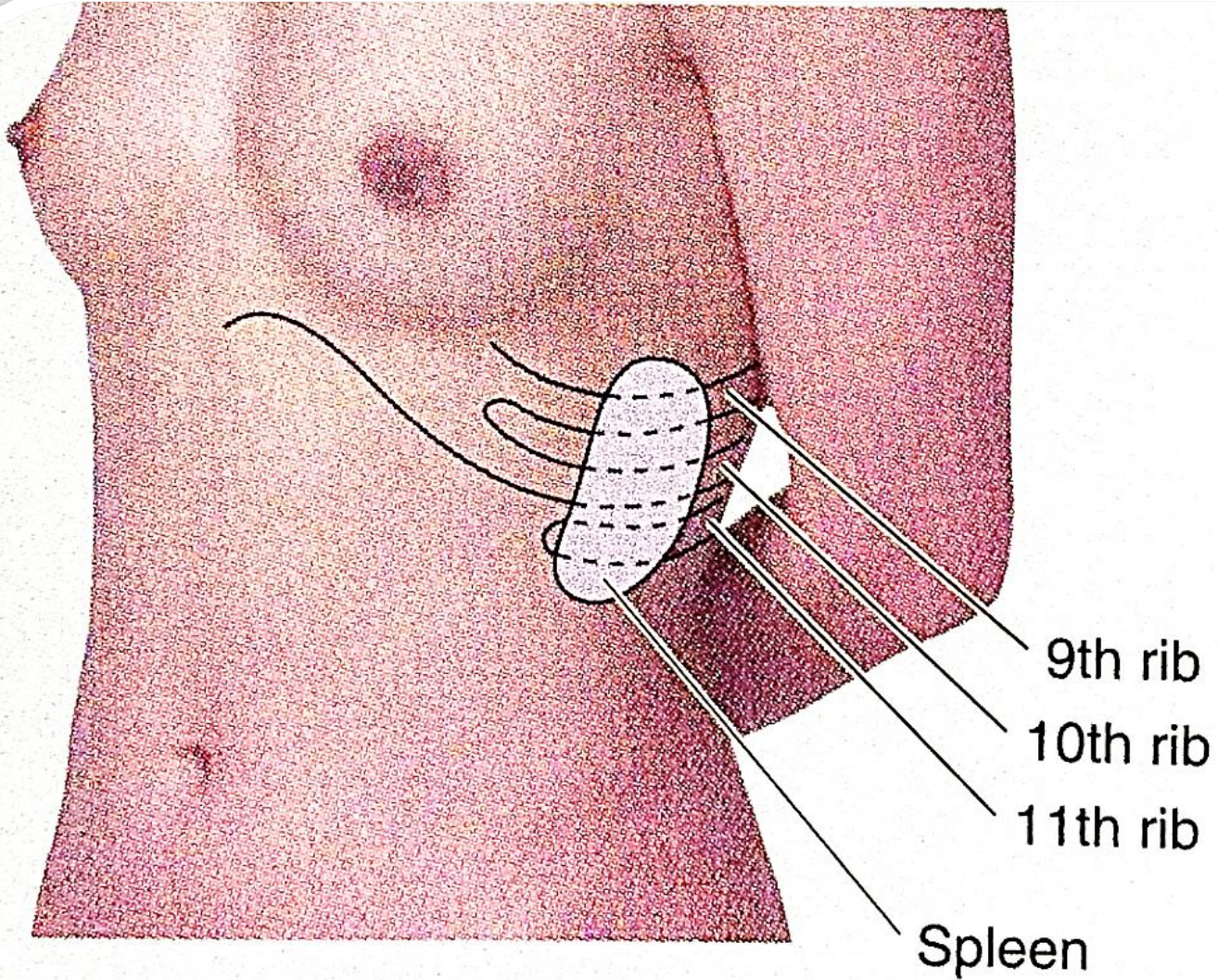
Anatomy of the Spleen



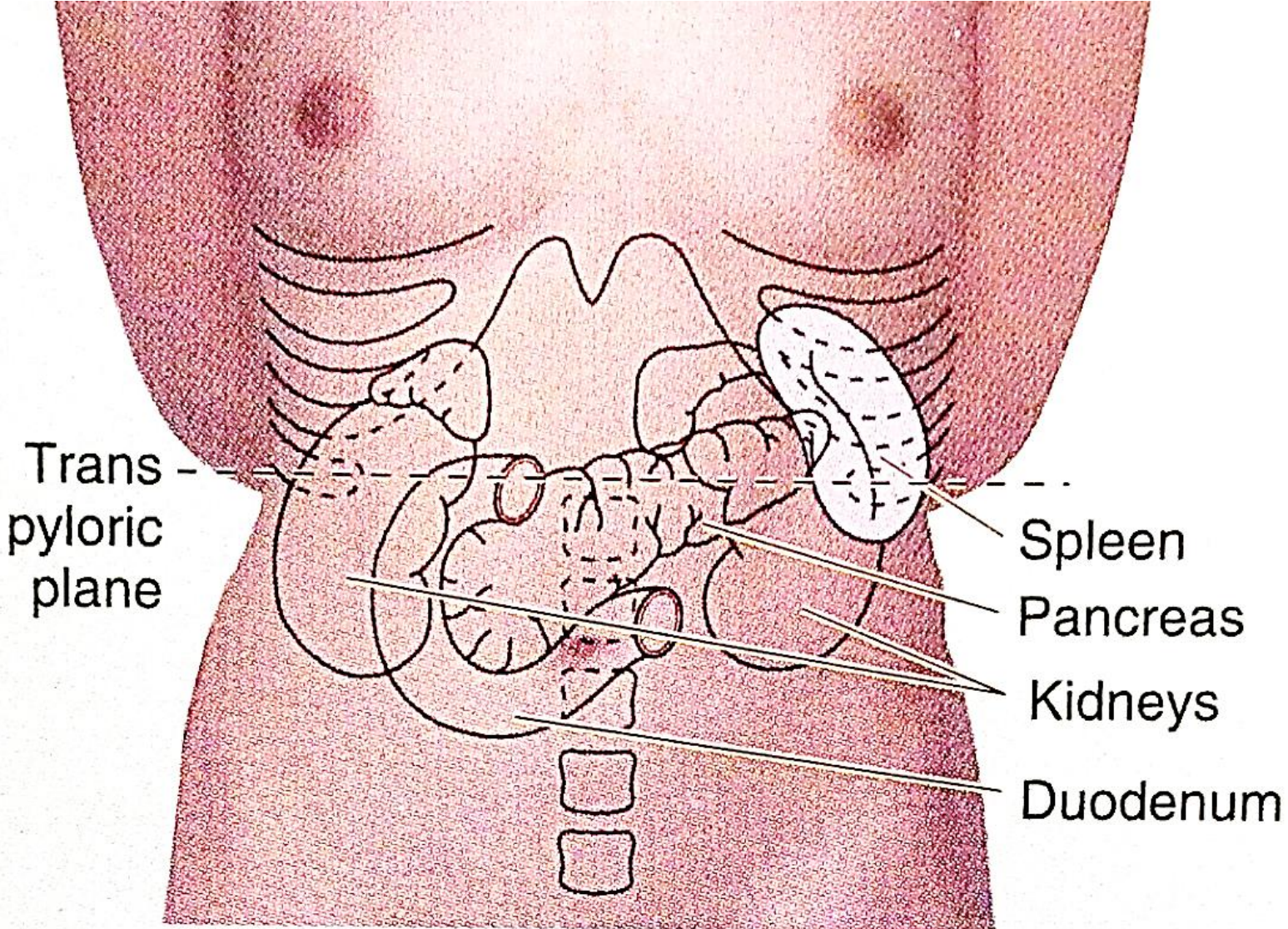
Learning Objectives

- Describe the anatomy of the spleen, including its position, blood supply, surface markings, relations and peritoneal attachments.
- Explain the significance of these relations in trauma, and hematopoietic disorders

Surface anatomy



Surface anatomy



Borders and Surfaces

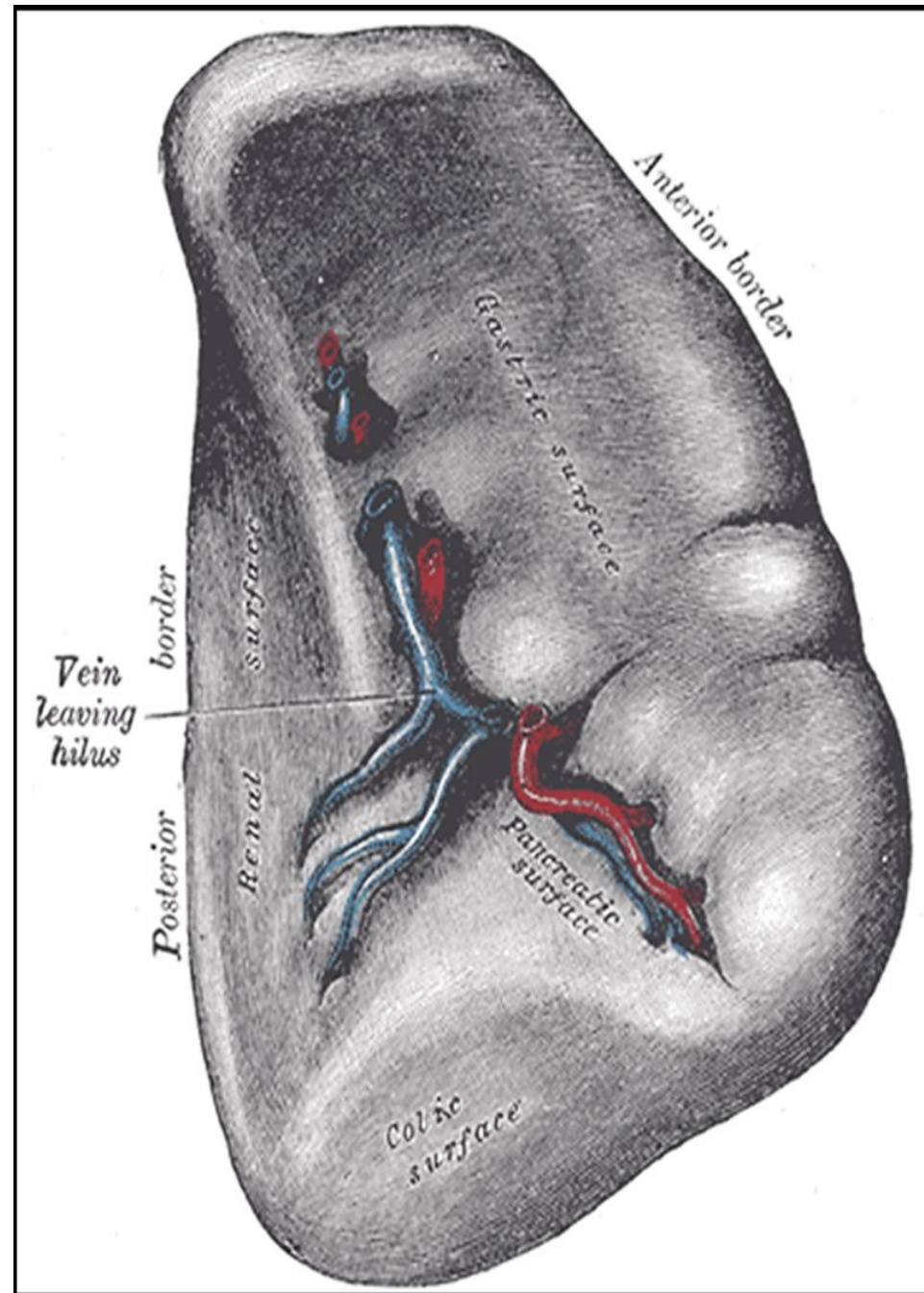
3 borders, 2 ends, 2 surfaces.

A. Ends

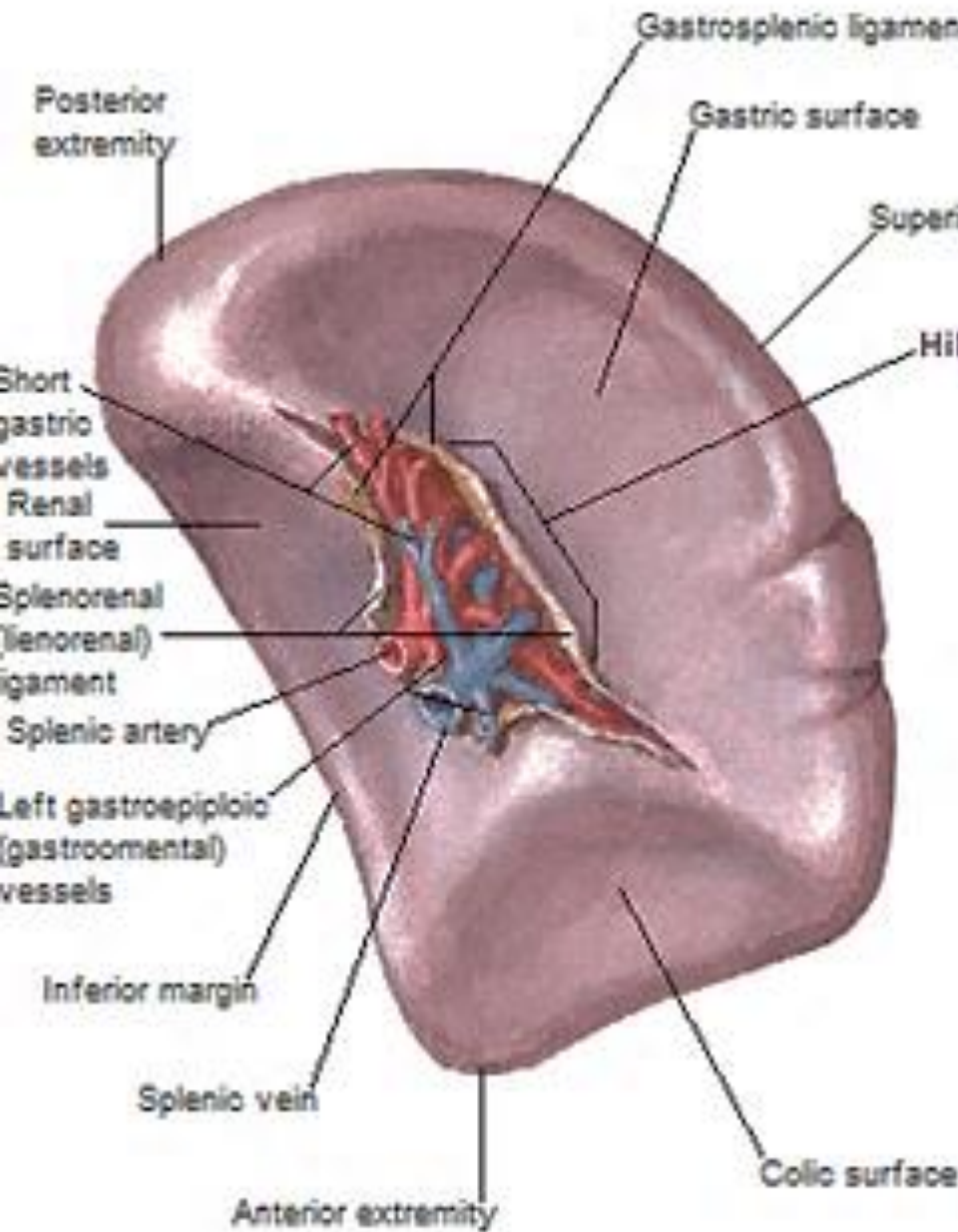
- 1) lateral end (Broad)
- 2) medial end (tapering)

B. Borders

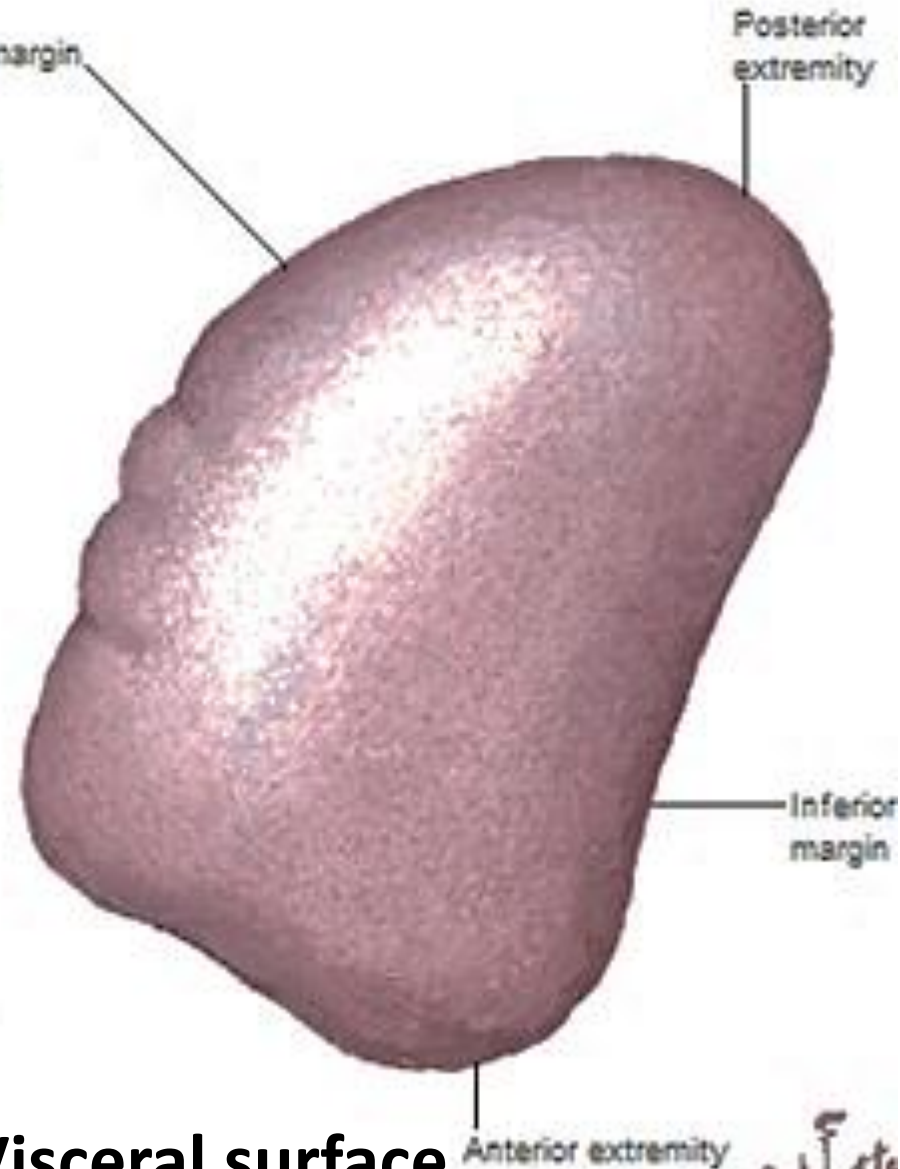
- **Upper(Anterior) border:** Sharp & notched
- **Lower (Posterior)border:** (Broad)
- **Intermediate border:** thick, incomplete. Extends from the medial end till the hilum).



Borders and Surfaces

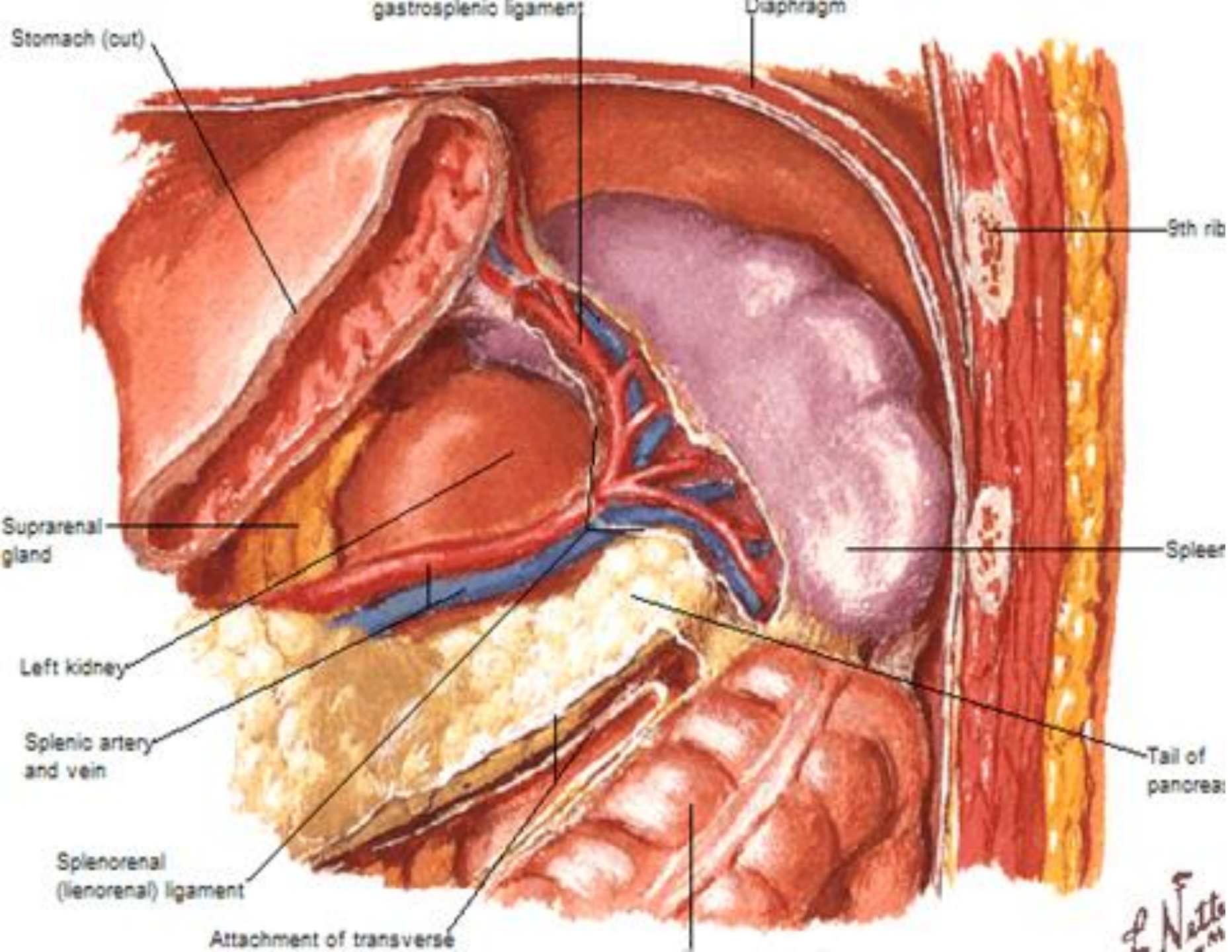


Diaphragmatic surface

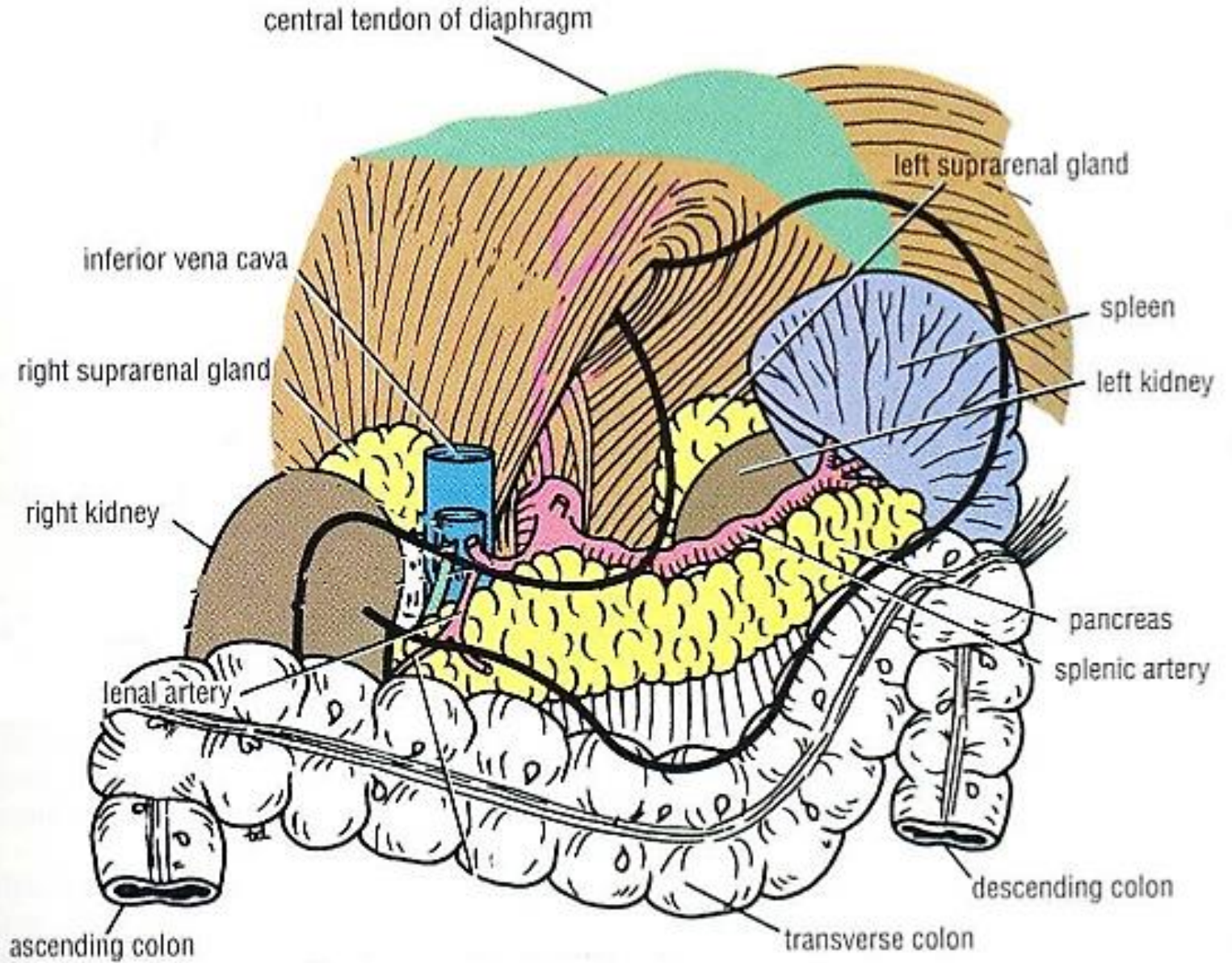


Visceral surface

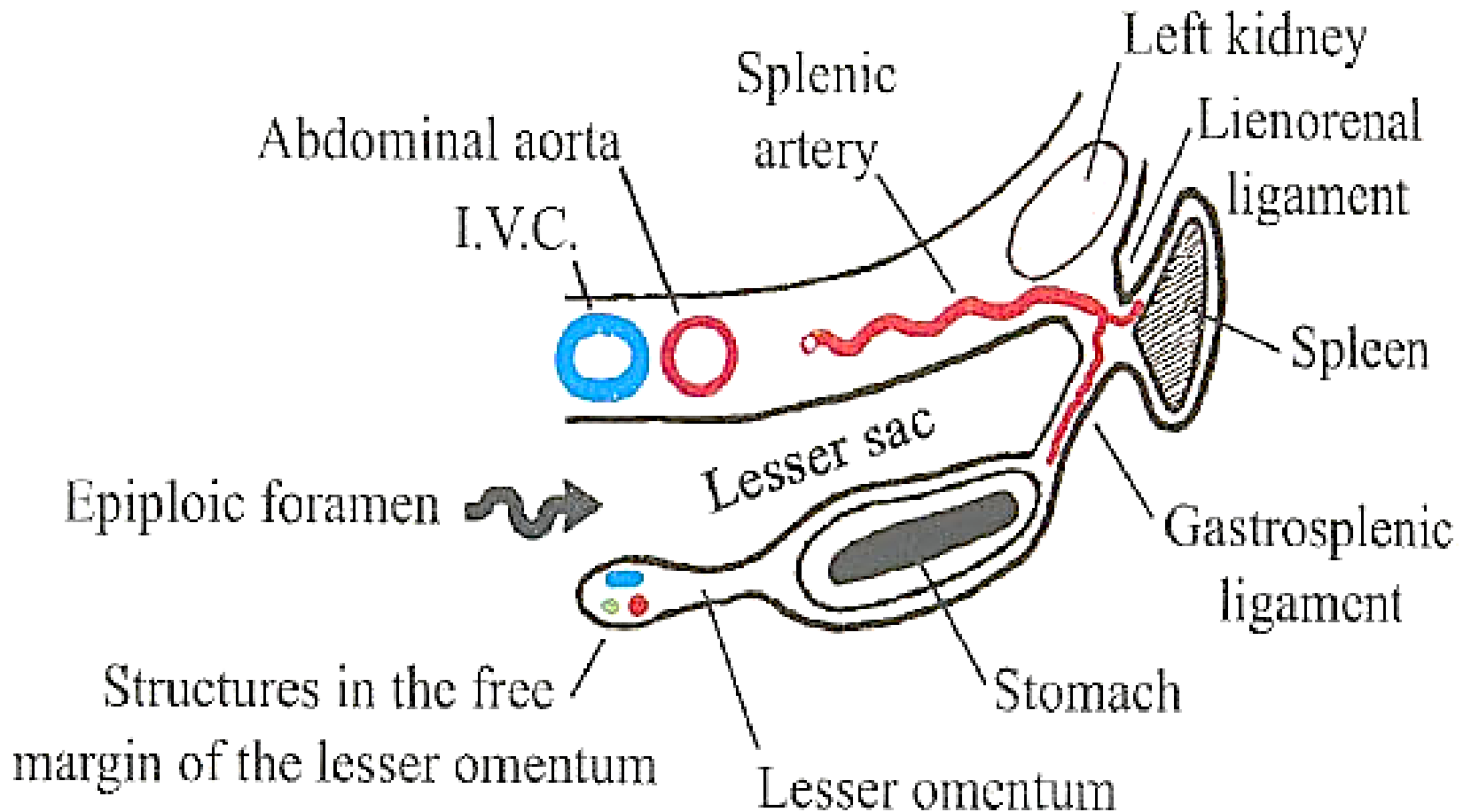
F. Netter



Relations



Peritoneal connections



Peritoneal relations

-The **gastrosplenic ligament** contains:

- Short gastric vessels completely covered by peritoneum of the greater sac except at the hilum.
- Left gastroepiploic vessels
- Lymph nodes

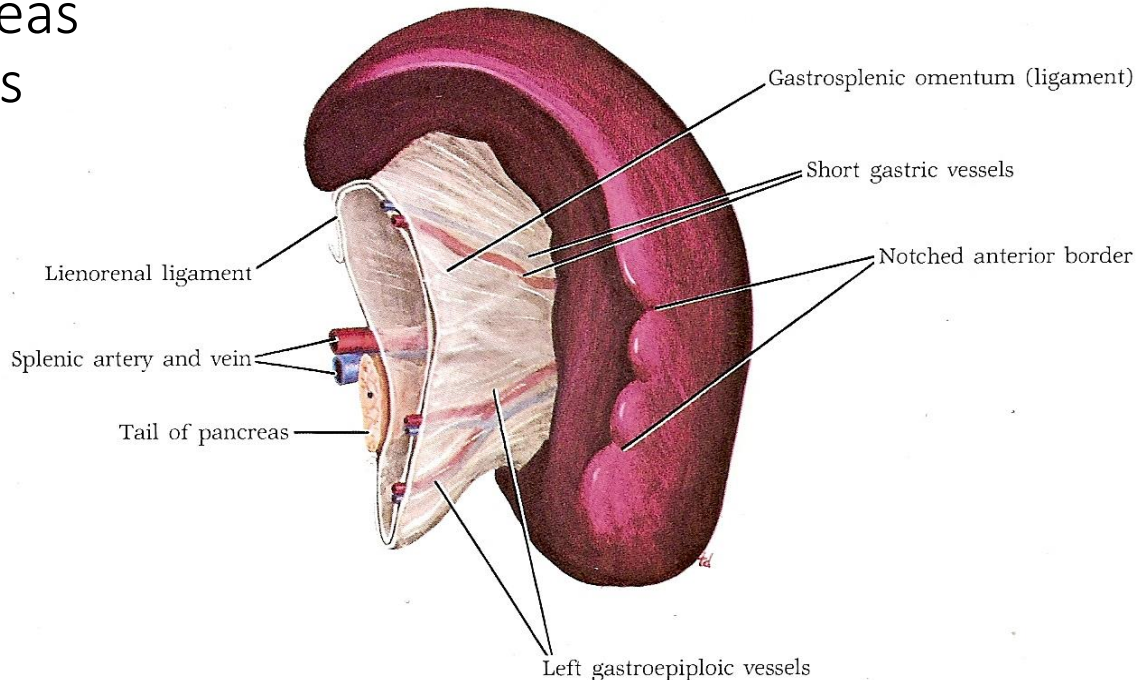
It is attached and related to the following ligaments:

1. **Gastro-splenic ligament**

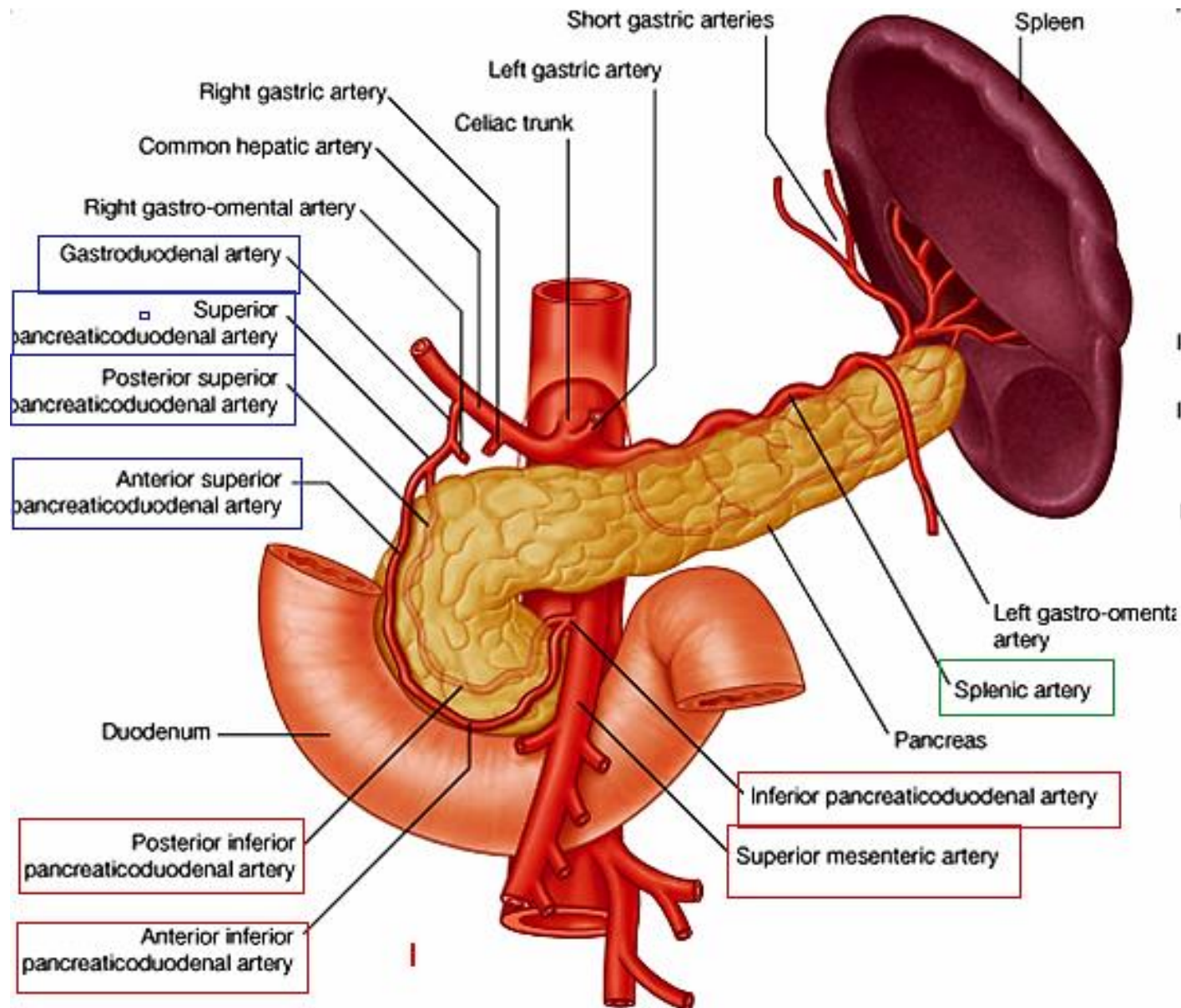
The **lienorenal ligament** contains:

2. **Spleno-renal ligament.**

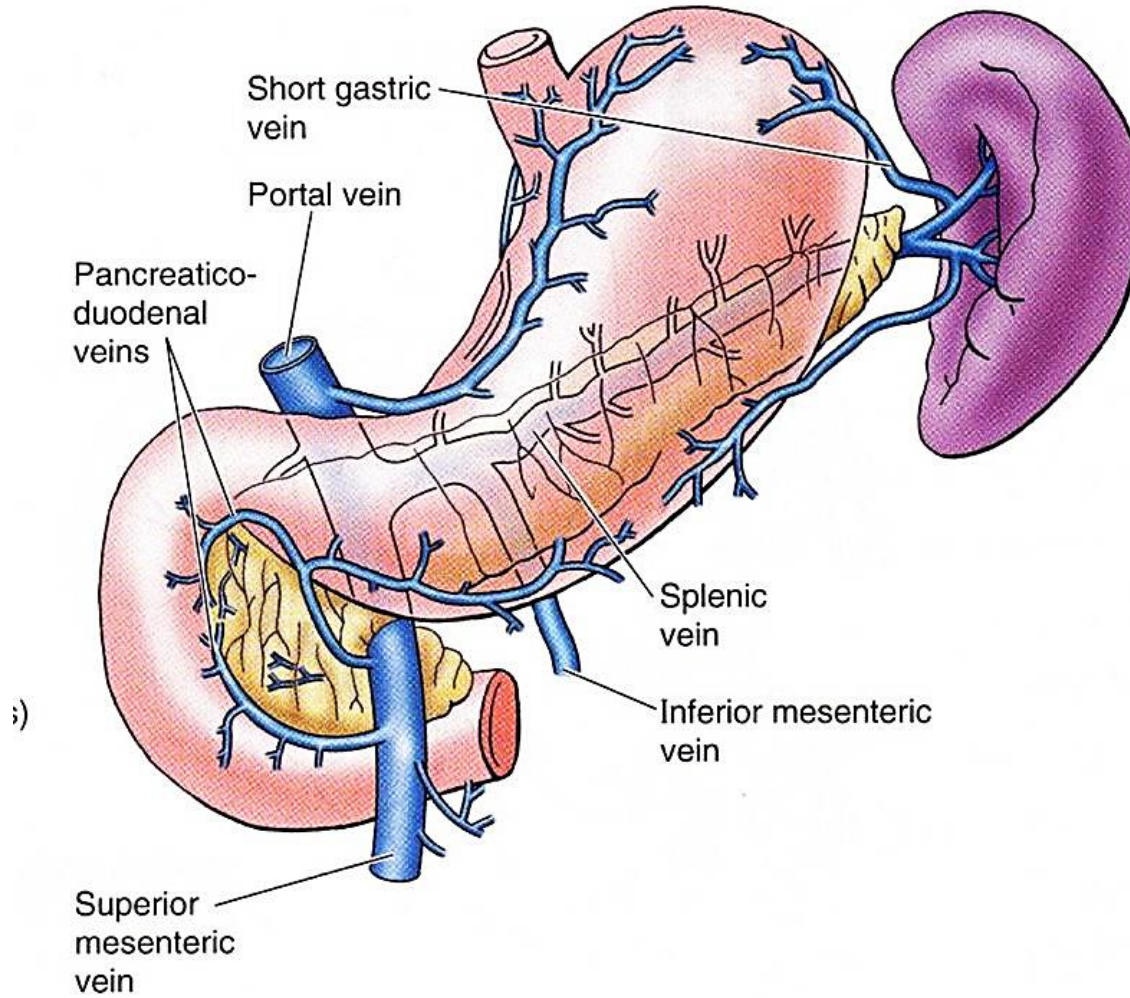
- Tail of pancreas
- Lymph nodes



Arterial Supply



Venous Drainage



Splenomegaly



Injured Spleen



Rupture Spleen

