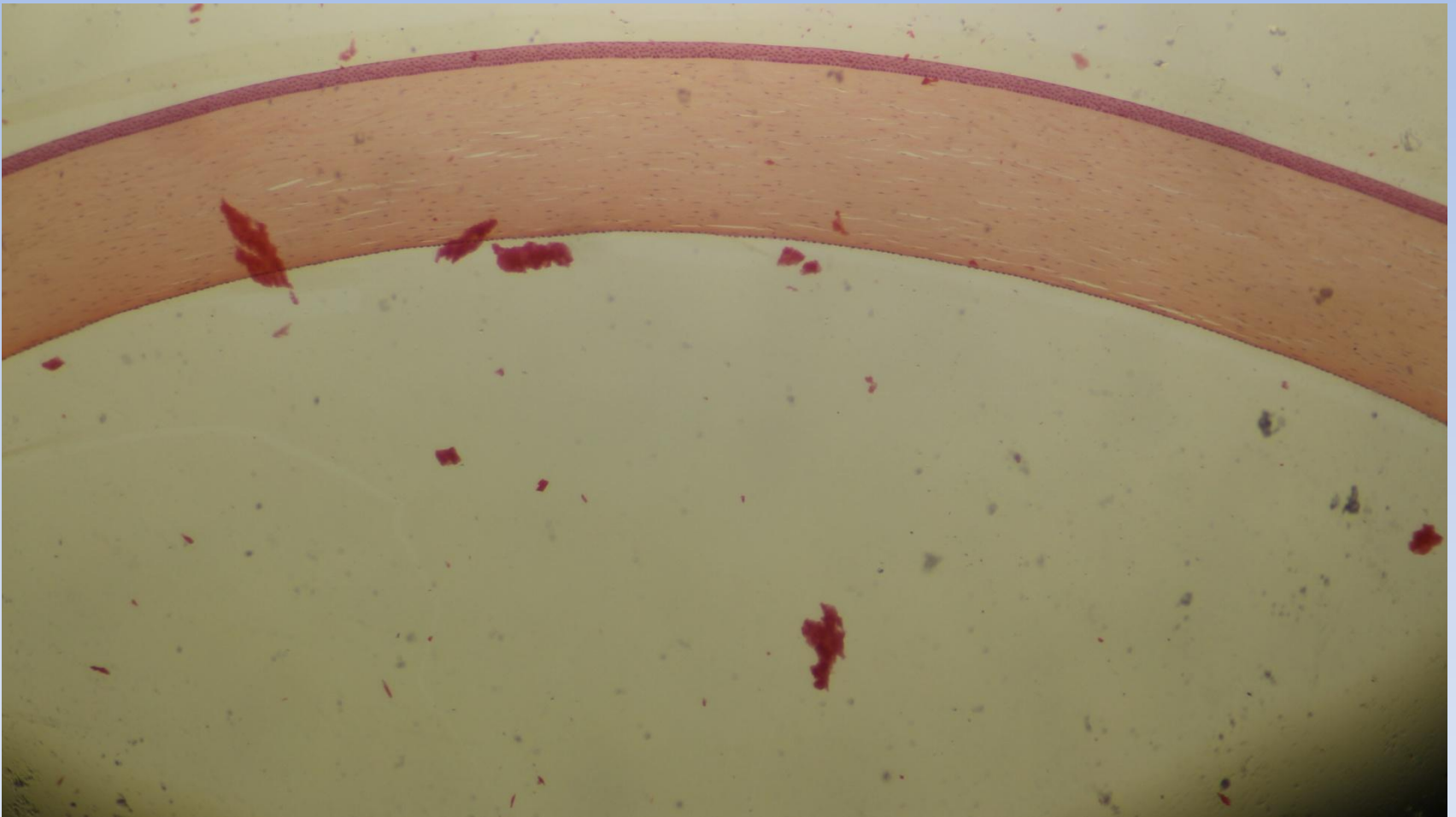


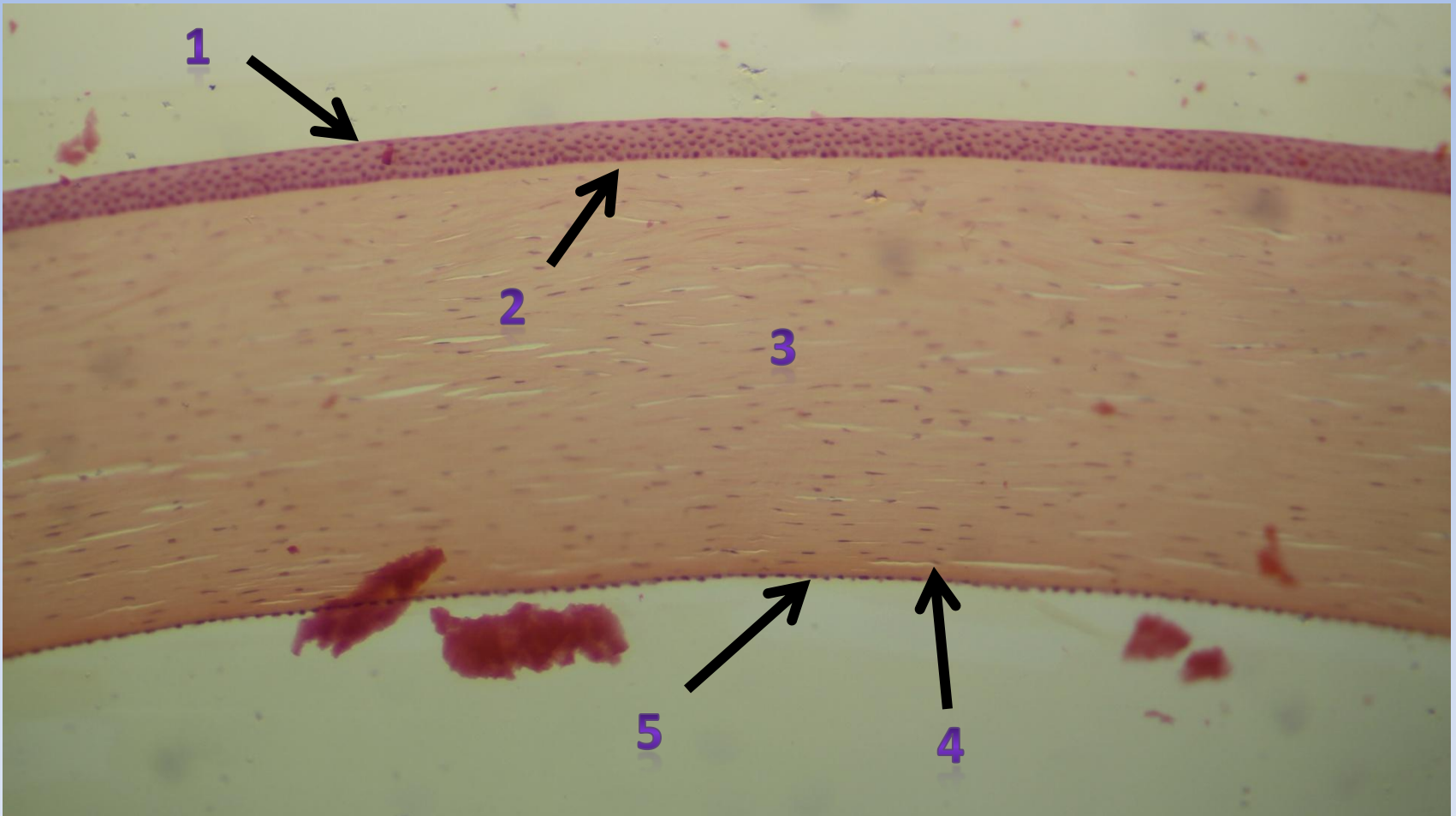
# **Special senses**

## **(Eye & Internal ear)**

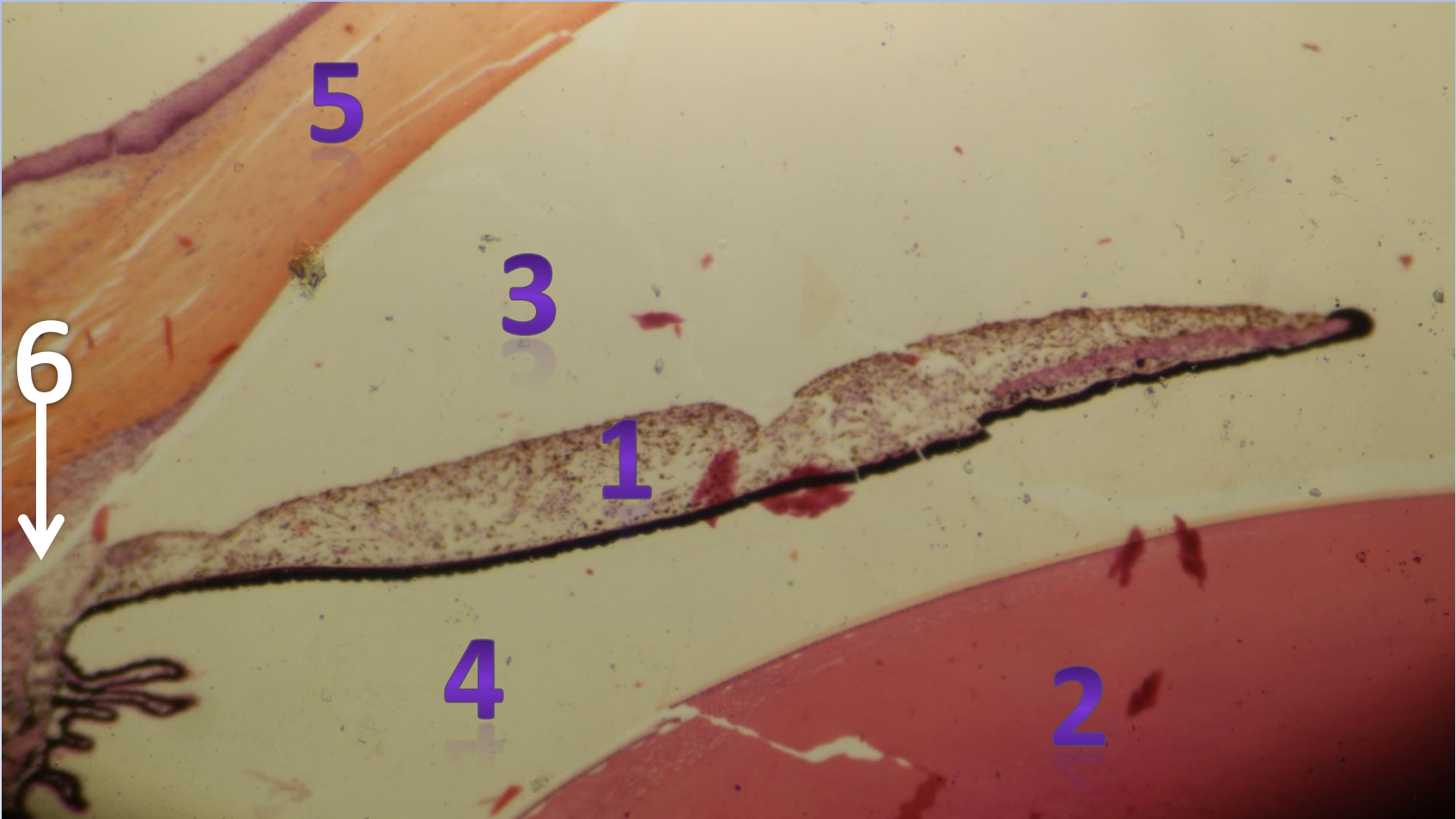
# The cornea



The cornea: Anterior epithelium (1), Bowman' membrane (2), Stroma (3), Decement membrane (4), Posterior epithelium (5)



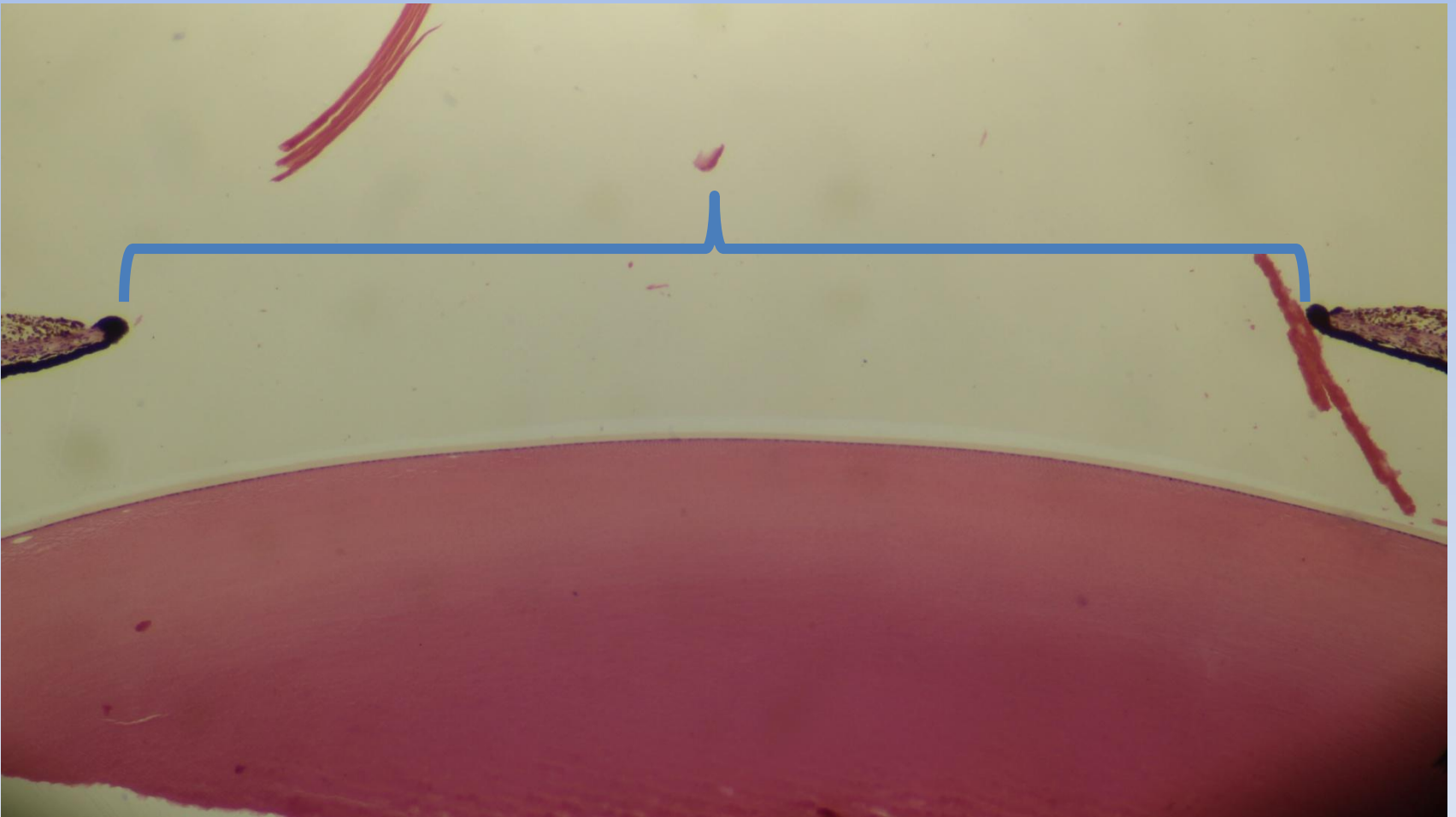
Iris (1), Lens (2), anterior chamber (3), posterior chamber (4), cornea (5), Schlemm's canal (6)



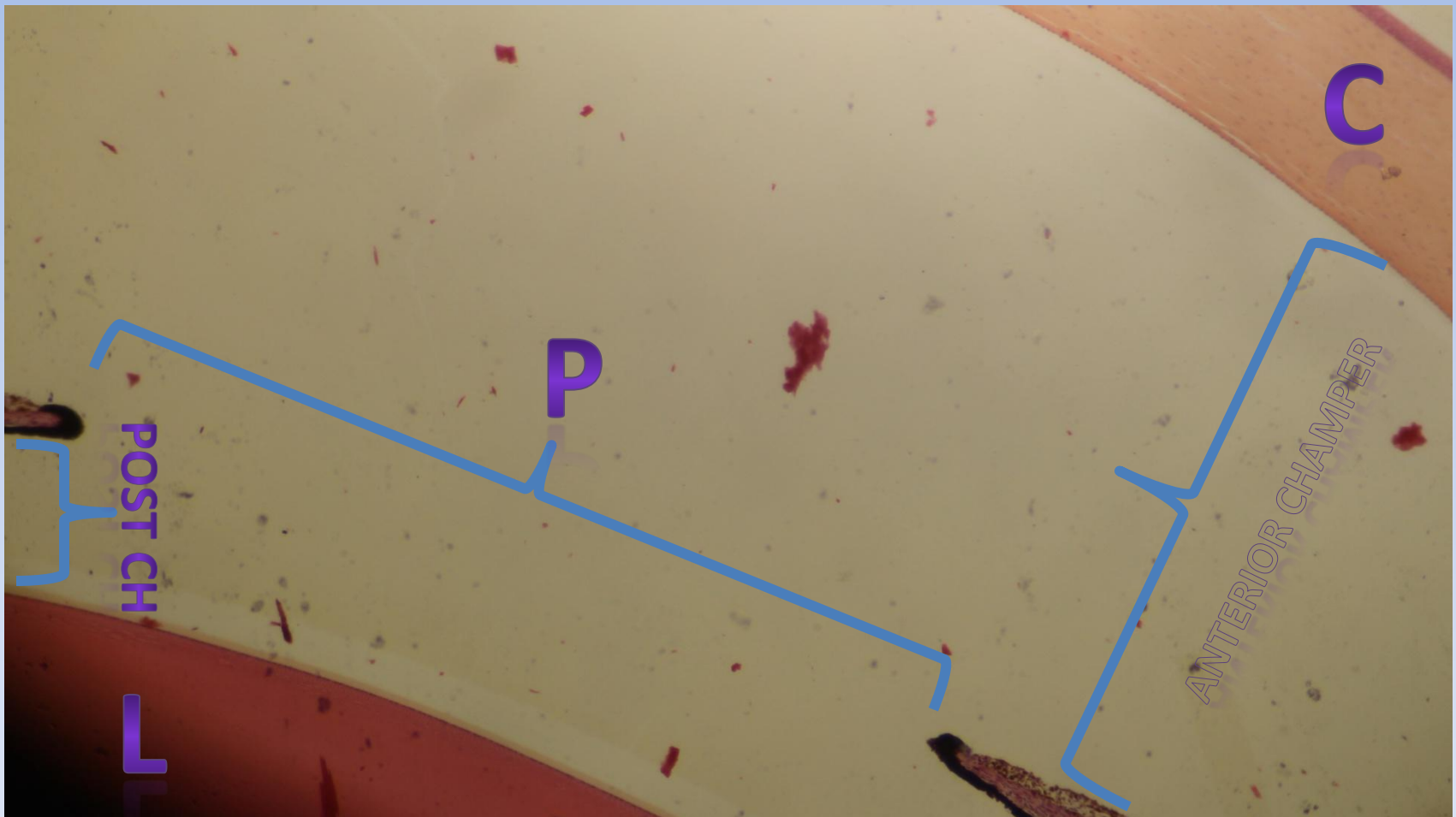
Iris (1), ciliary muscles (2), and ciliary processes (3), Schlemm's canal (4)



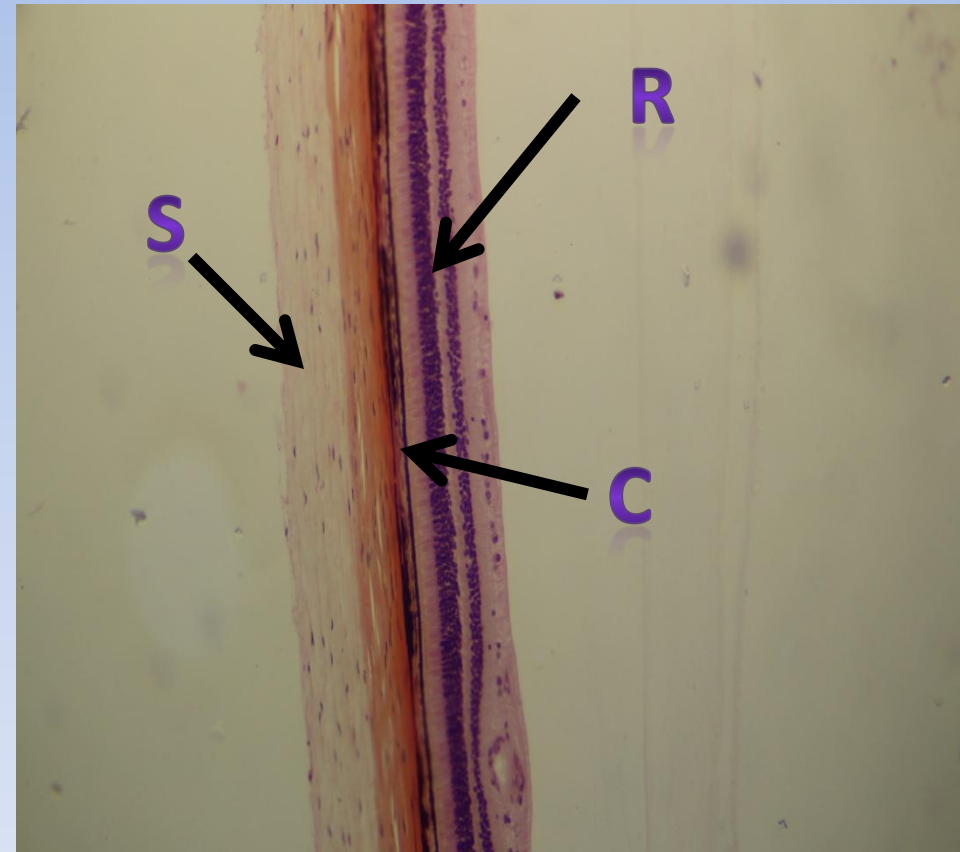
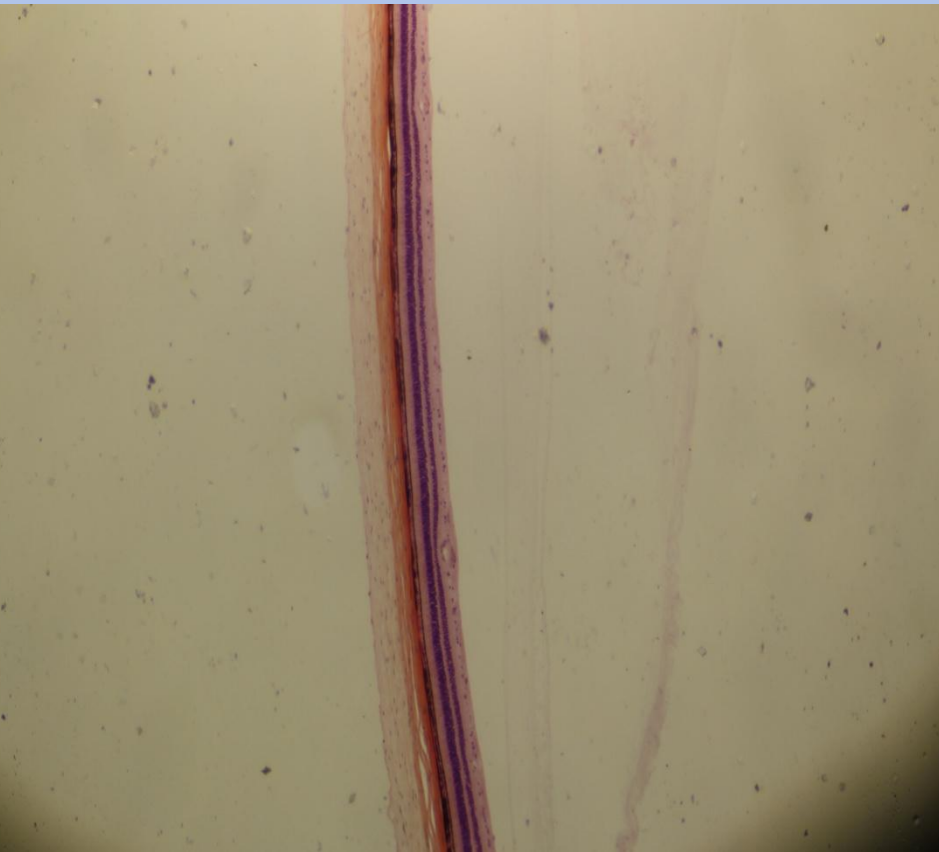
# The pupil



Cornea (C), anterior & posterior chambers, pupil (P), and the lens (L)

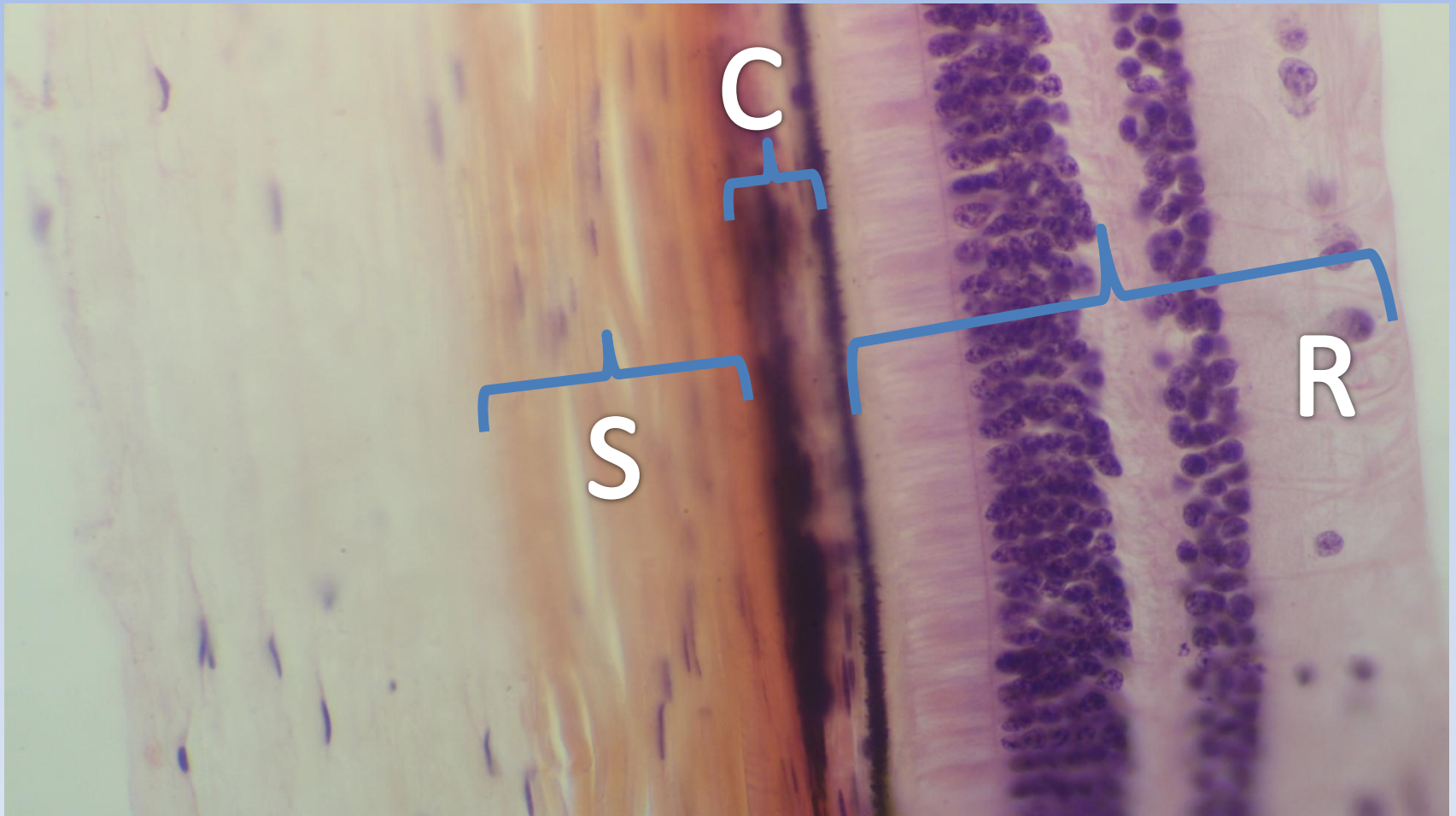


# 3 coats of the eye (Sclera, Choroid and Retina)

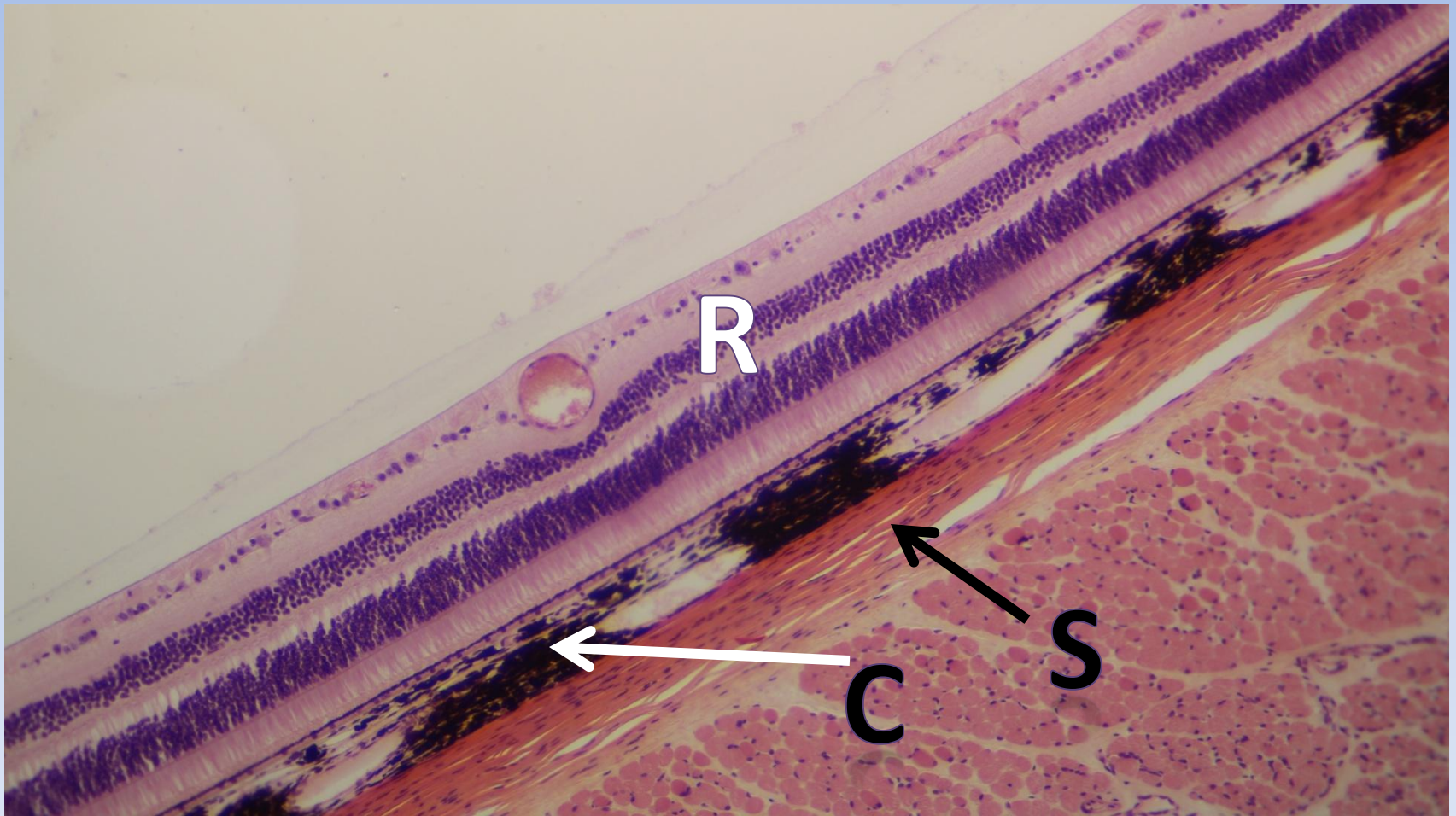




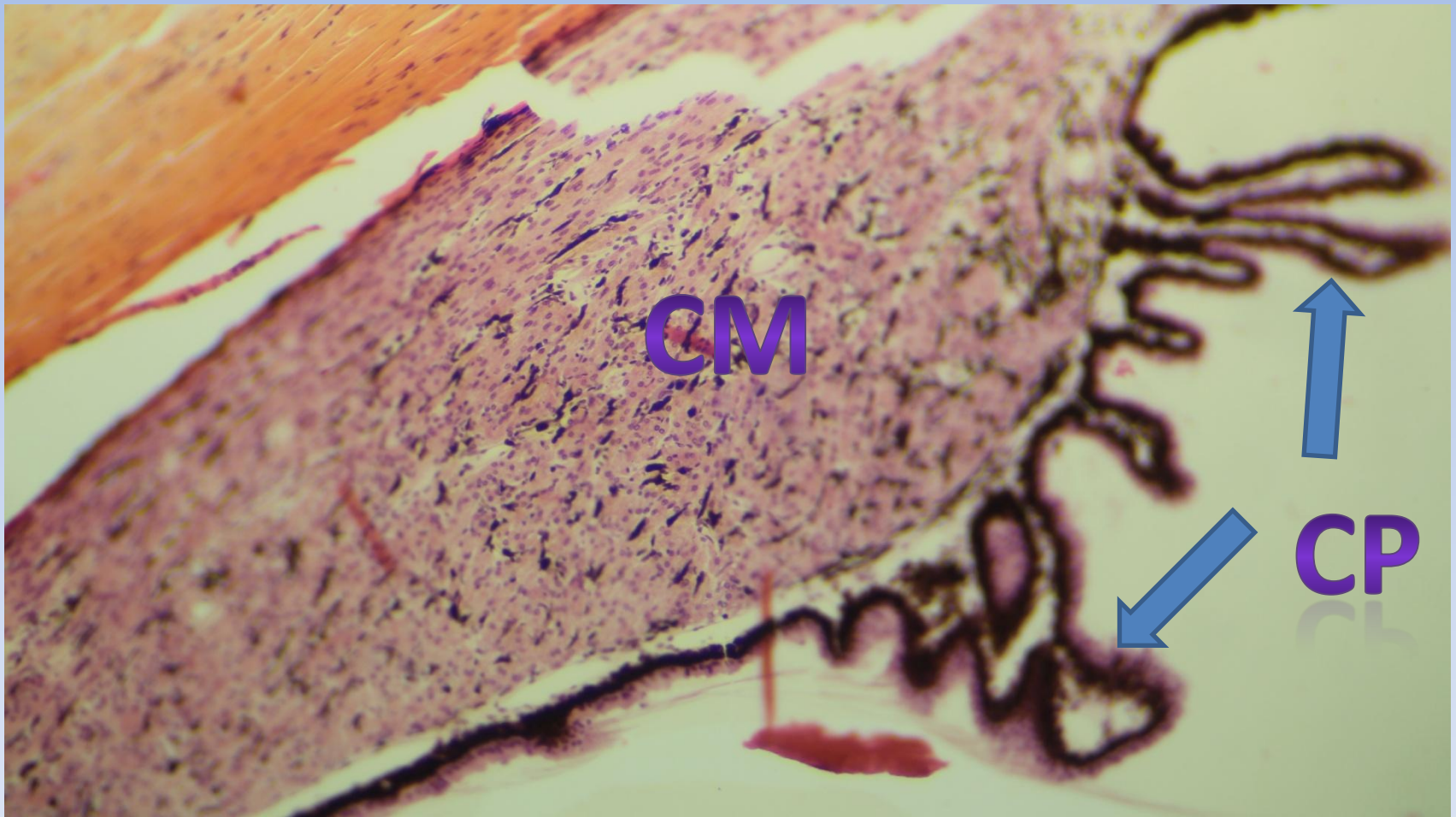
# Retina (R), Choroid (C), and Sclera (S)



# Retina (R), Choroid (C), and Sclera (S)



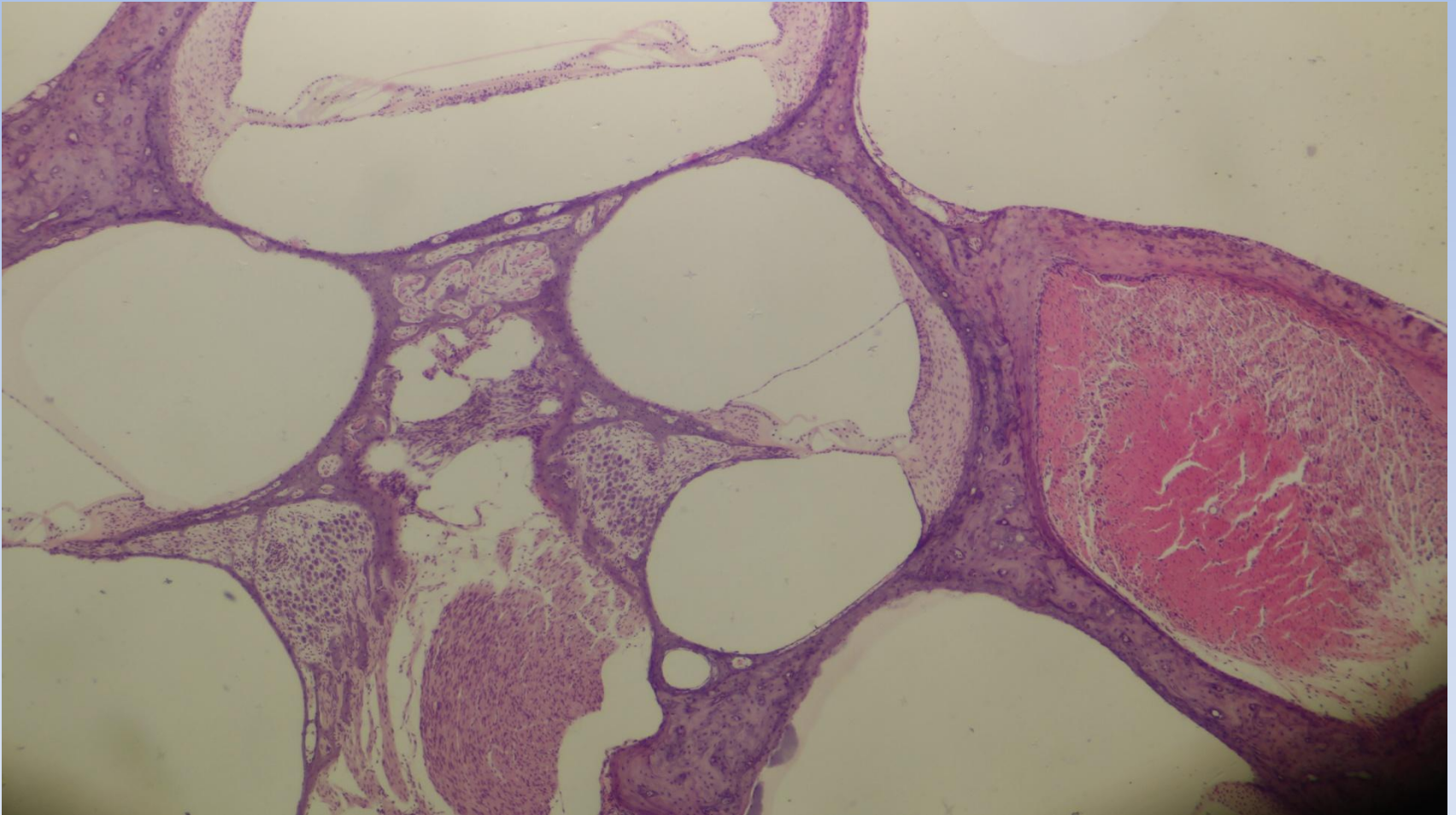
# Ciliary muscles (CM) and ciliary processes (CP)



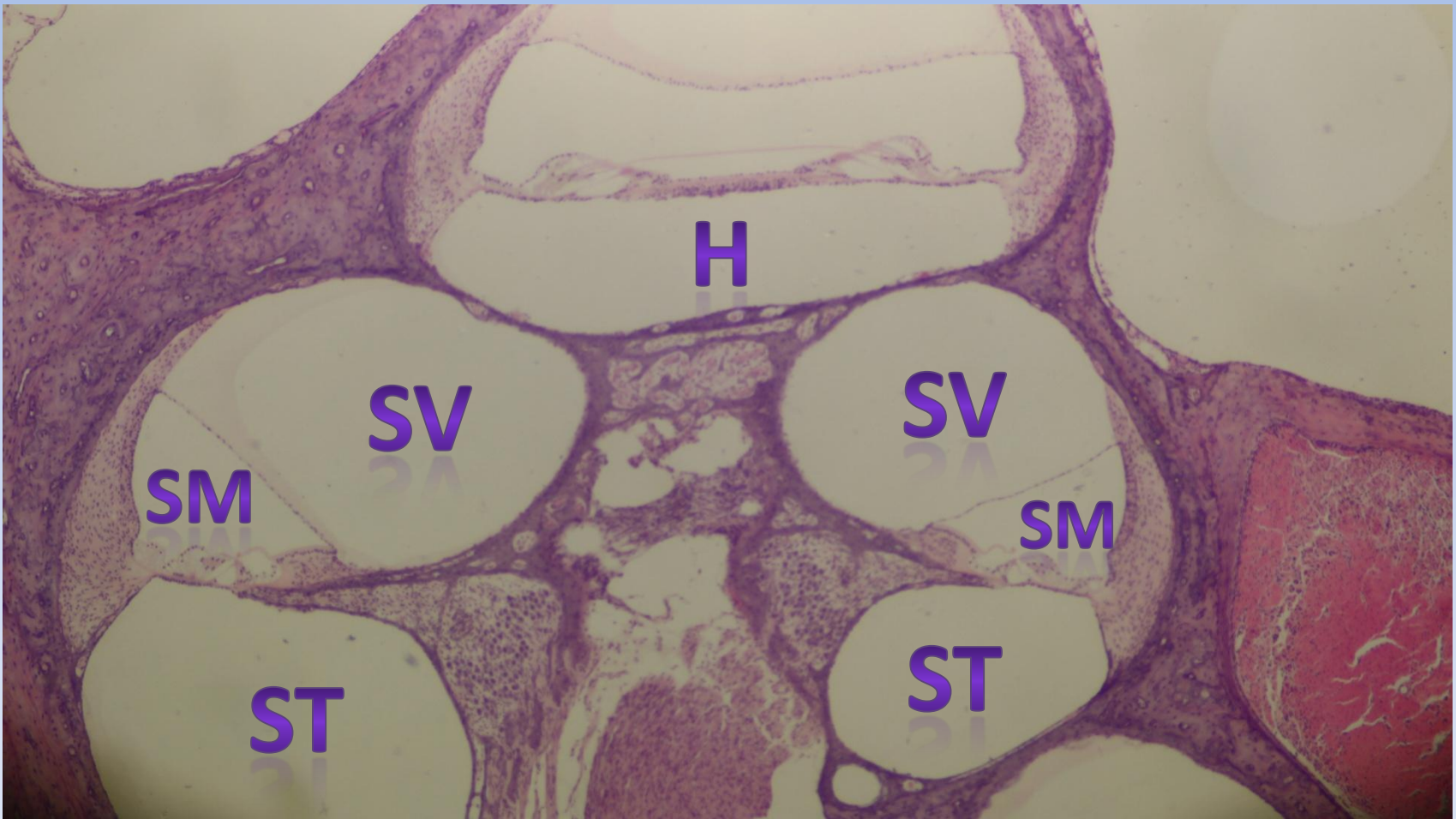
# Optic disc (entrance of Optic nerve)



# Internal ear



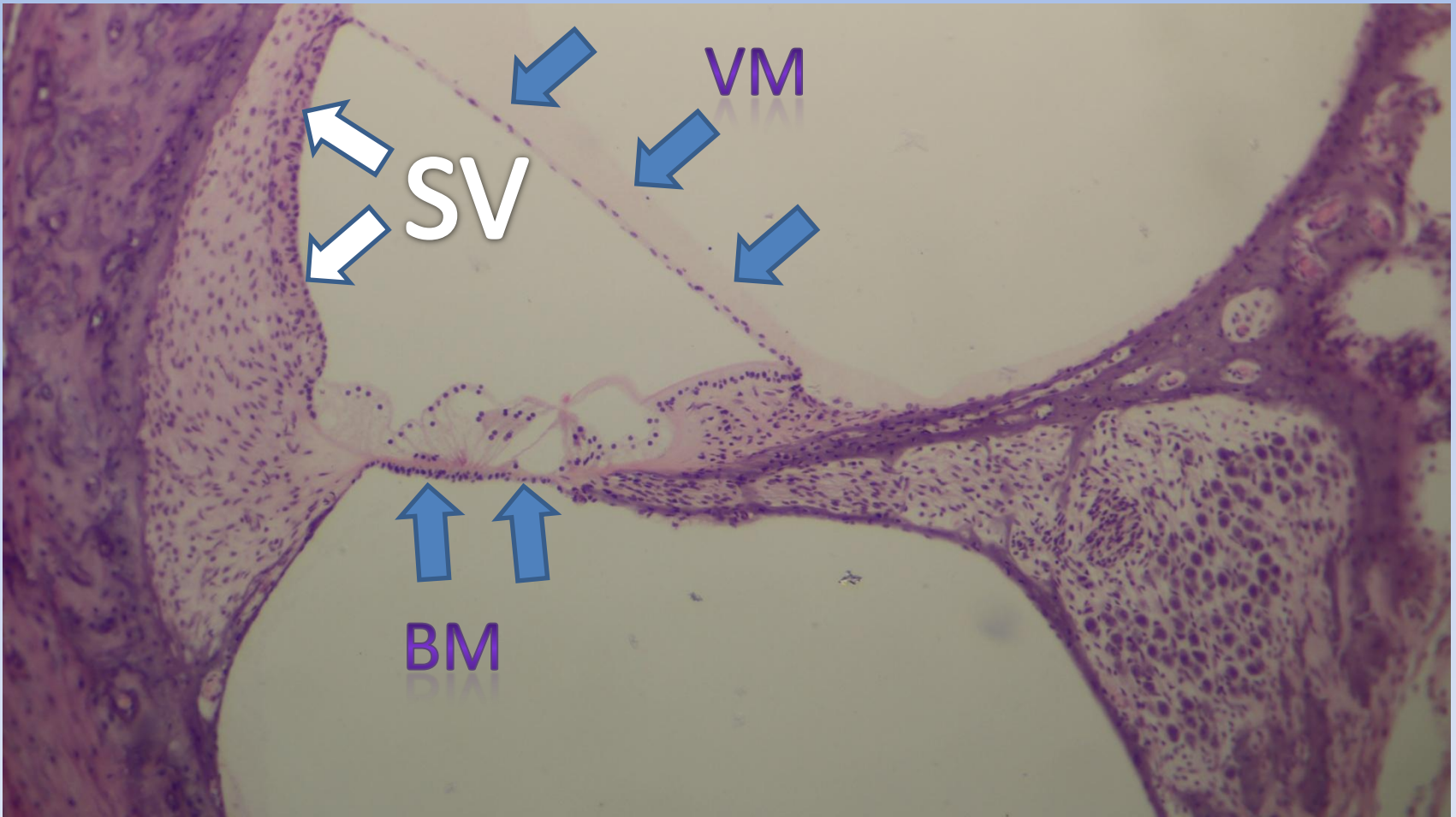
Internal ear: Helicotrema (H), Scala vestibule (SV), scala tympani (ST), and scala media (SM)



# Scala vestibule (SV), scala tympani (ST), and scala media (SM)



# Vestibular membrane (VM) and basilar membrane (BM), Stria Vascularis (SV)

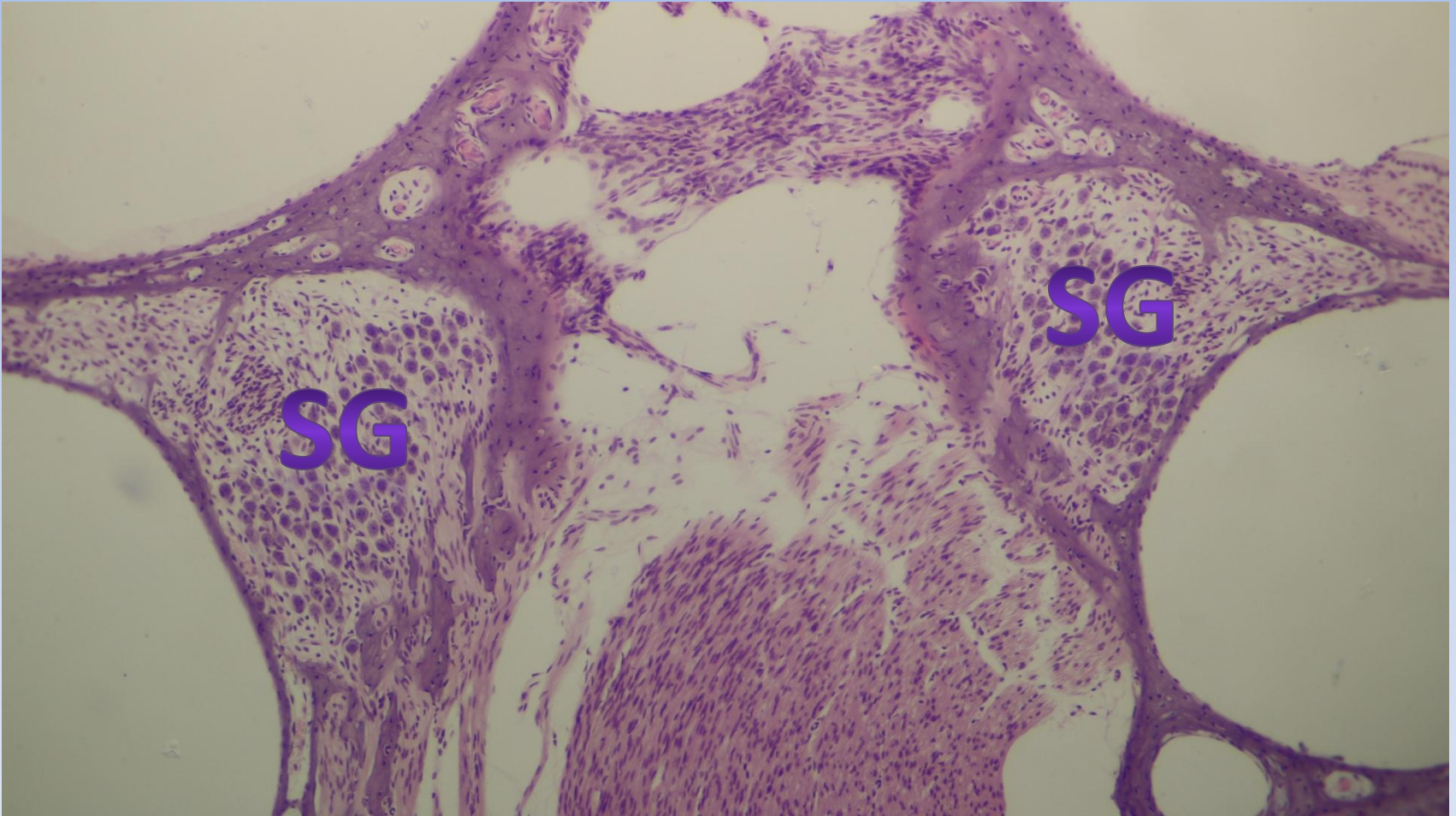




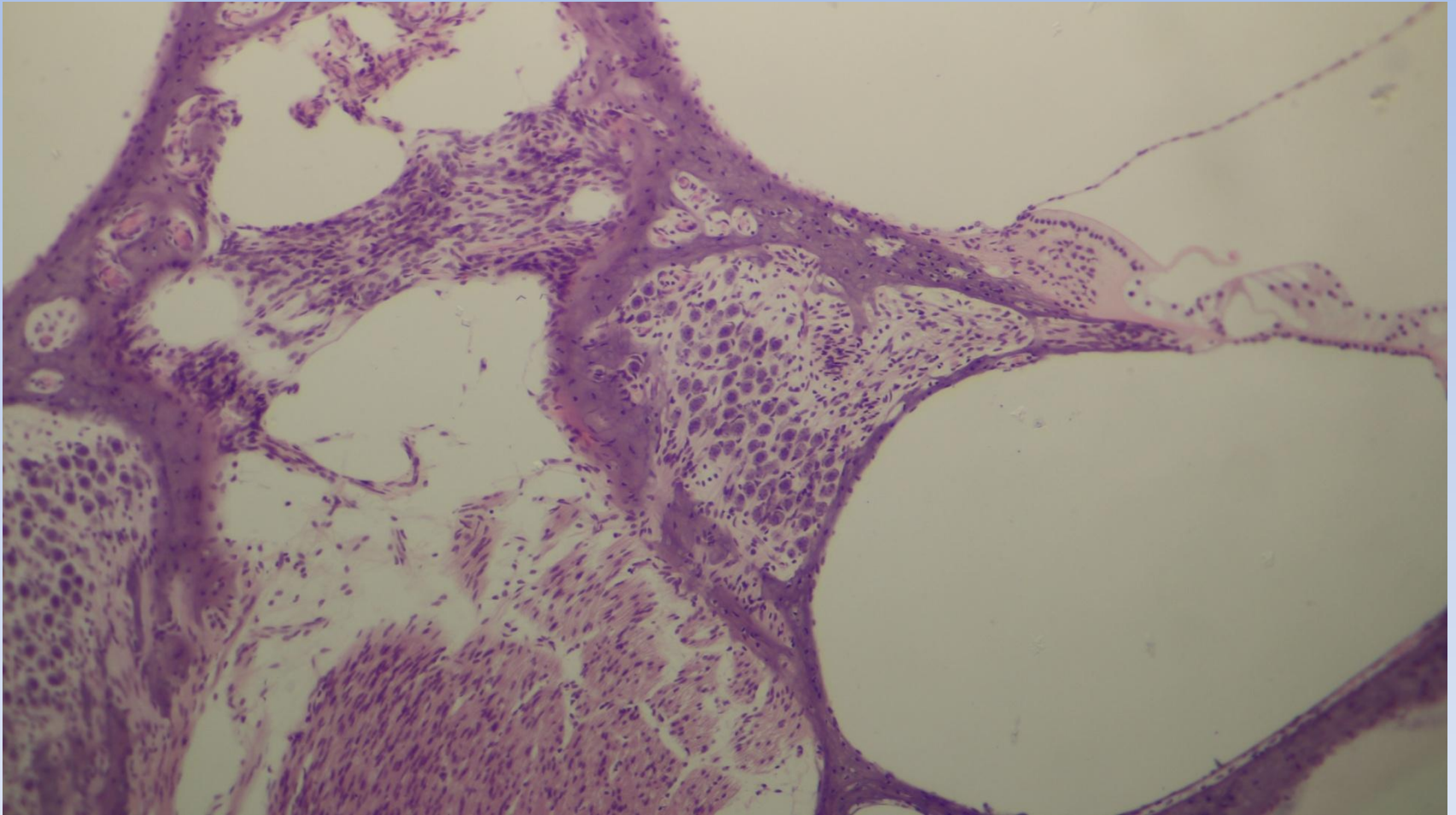
# Organ of Corti, tectorial membrane (TM)



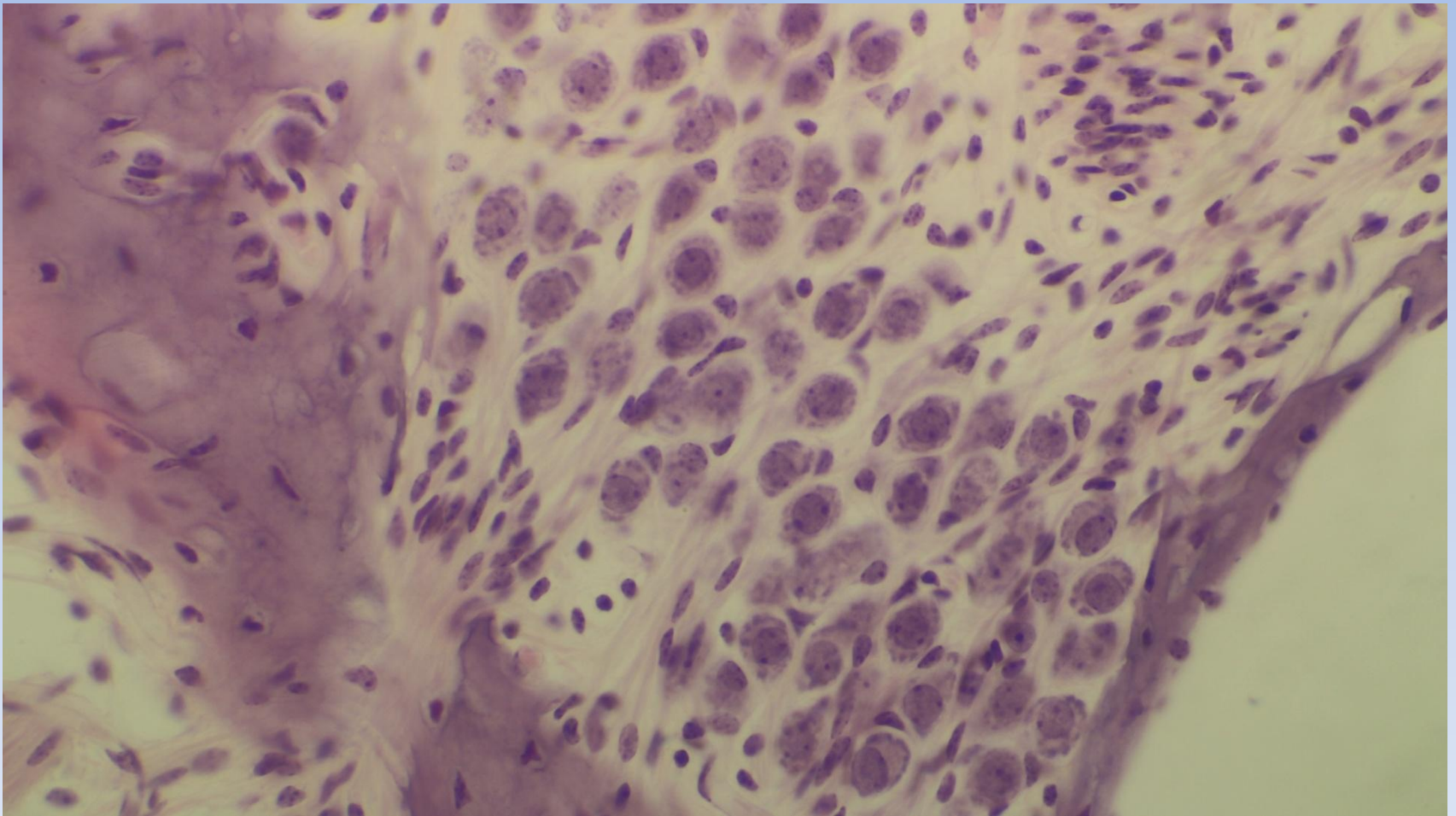
# Two spiral ganglia (SG)



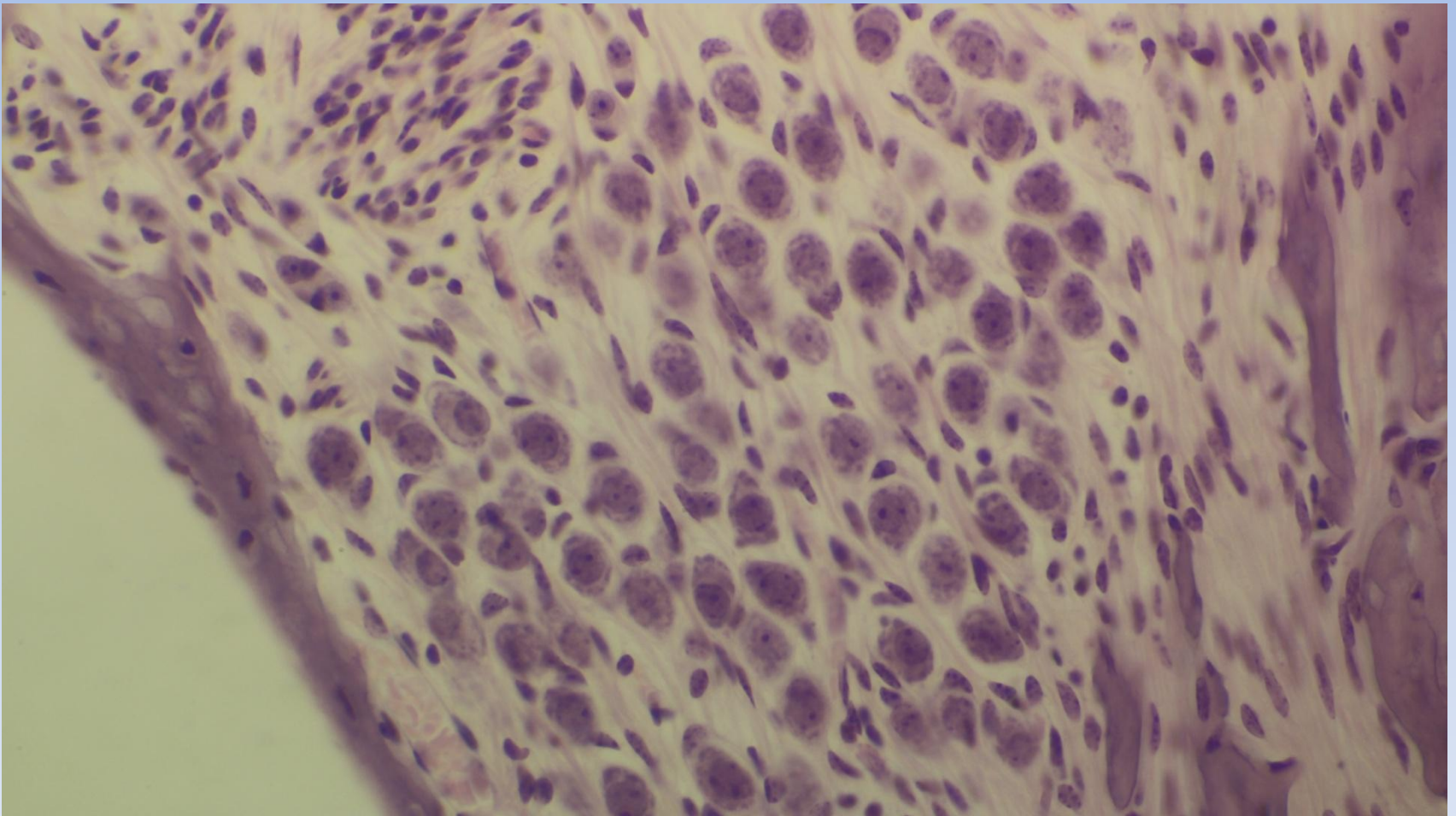
# Spiral ganglia



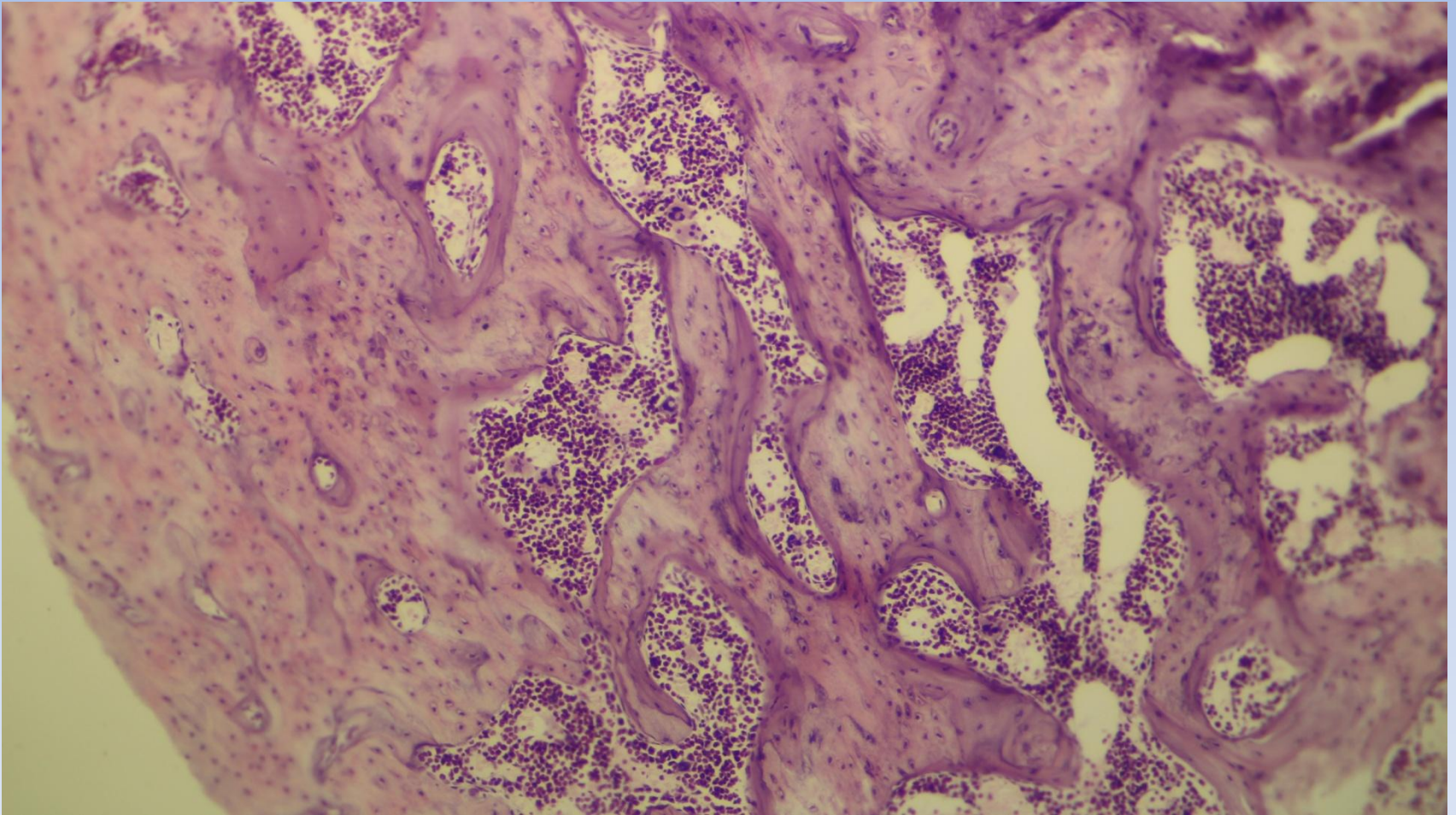
# Ganglionic cells in spiral ganglia



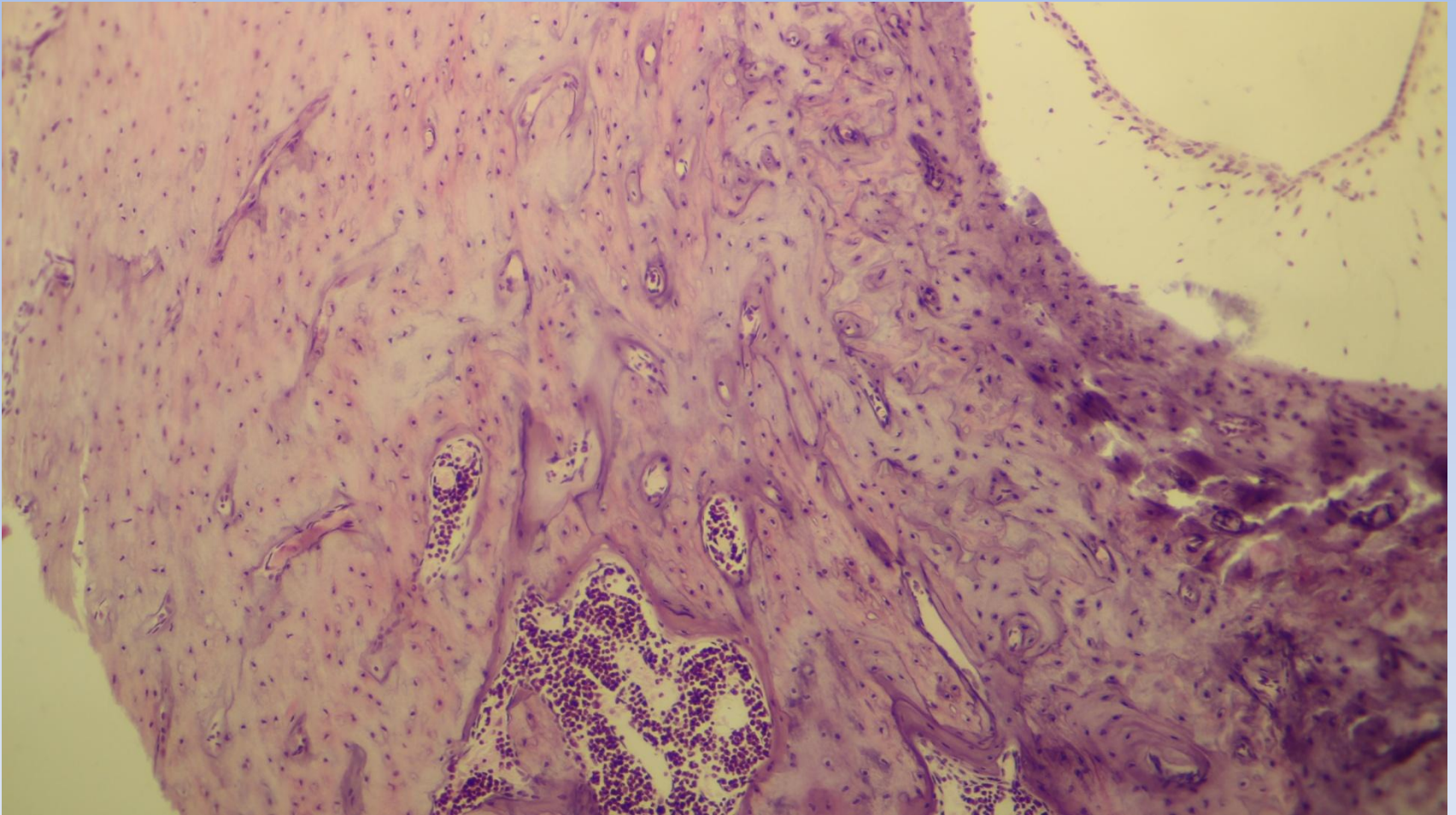
# Ganglionic cells in spiral ganglia



# Bone and bone marrow



# Bone and bone marrow



**Thank you**  
**With all the bests**

**Dr. Abdal-jabbar F. Al-Rubai'y**  
**M.B.Ch.B, Ph.D (U.K)**