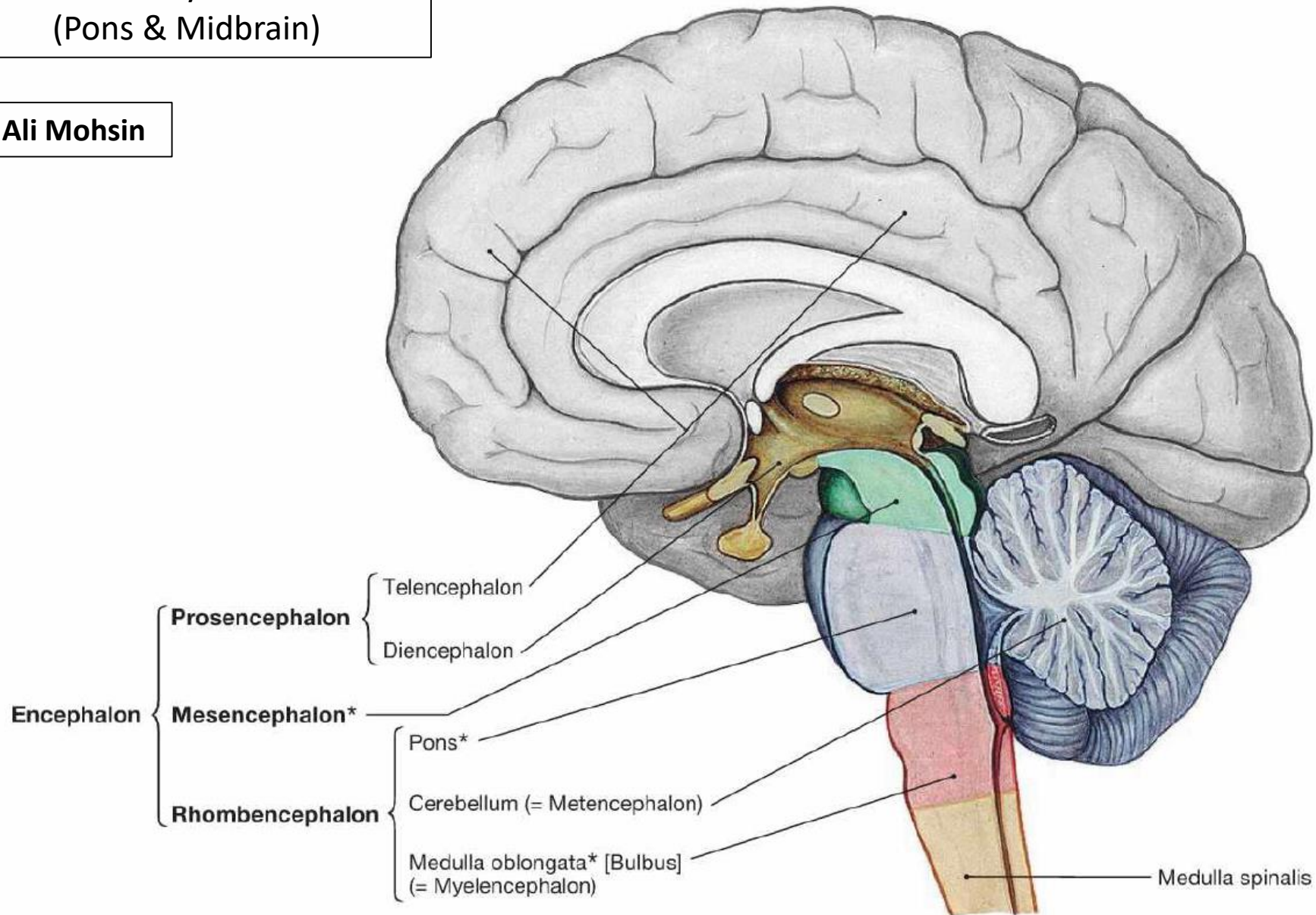
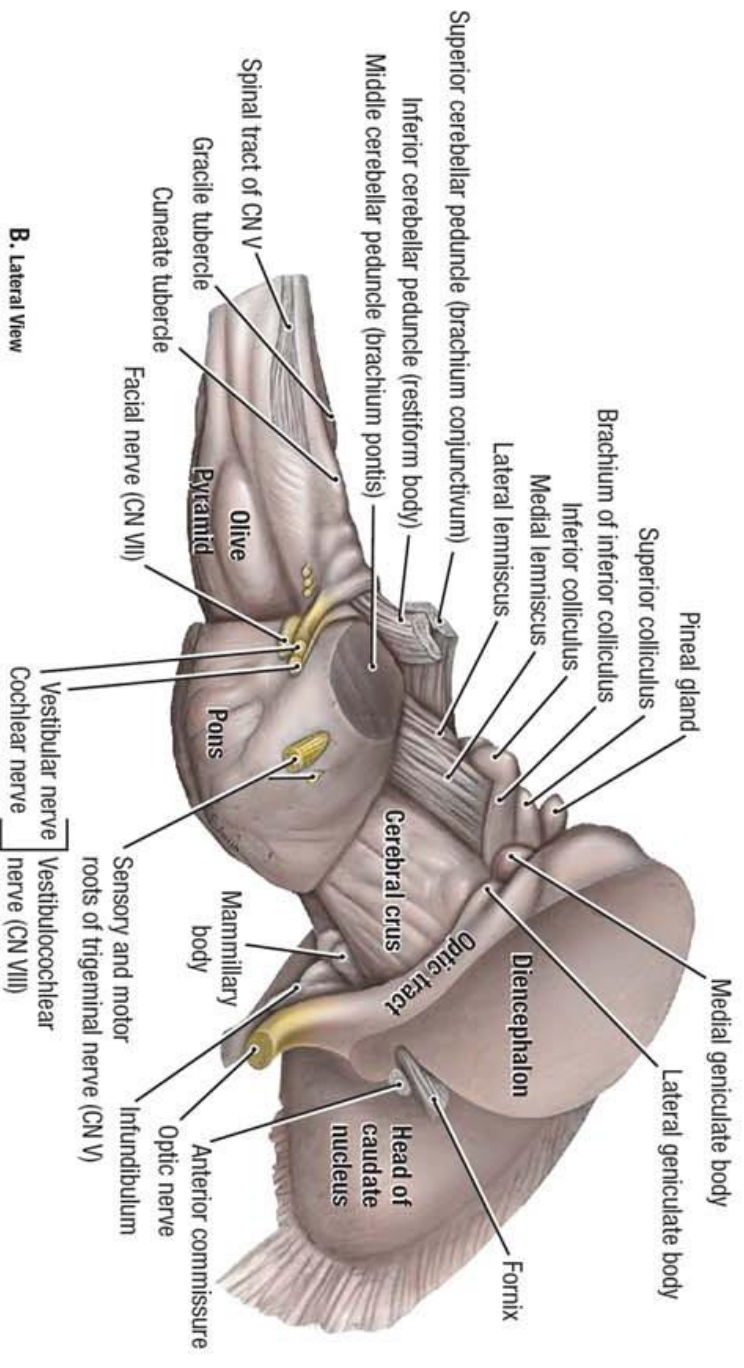
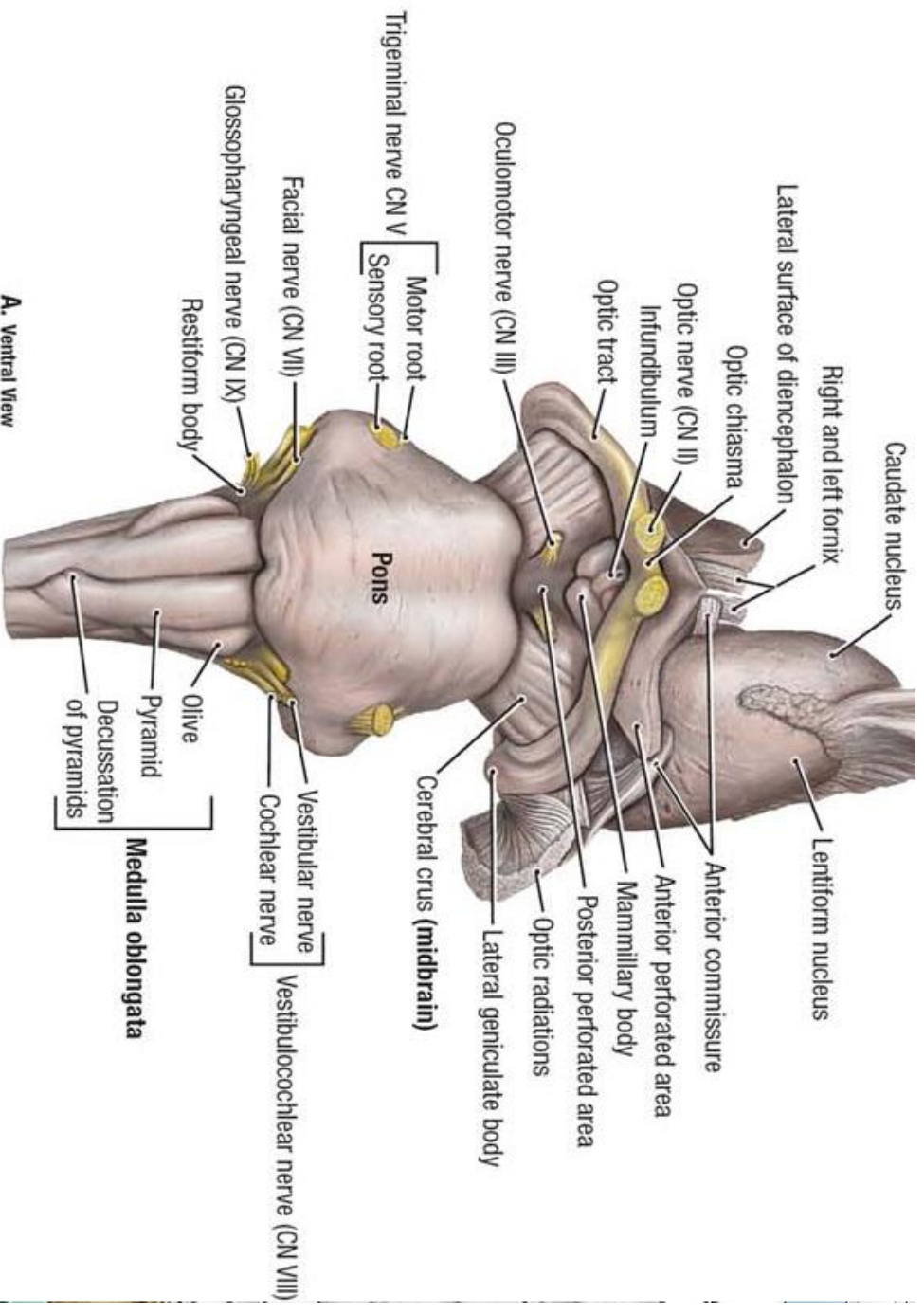


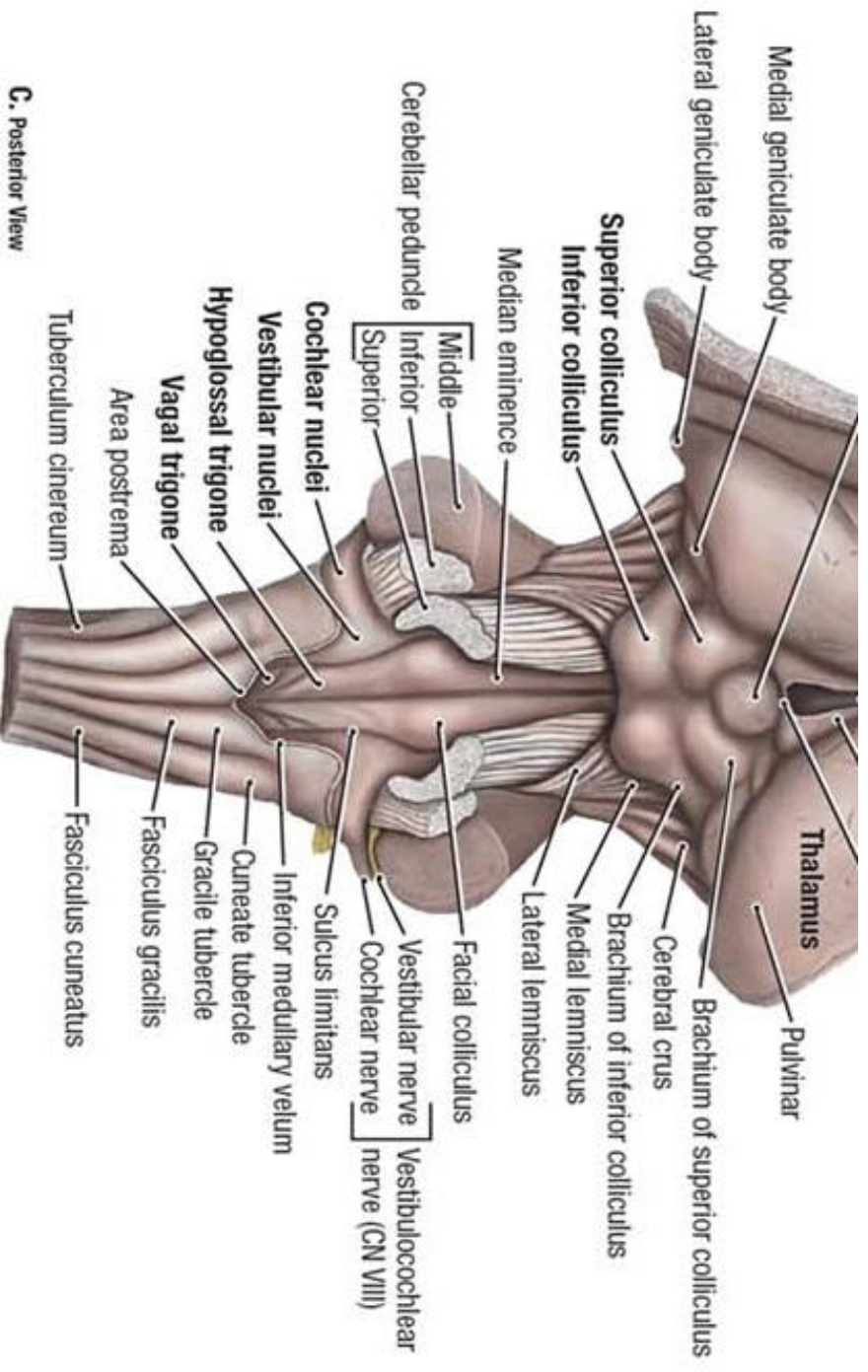
Neuroanatomy 5: Brainstem  
(Pons & Midbrain)

Dr. Ali Mohsin

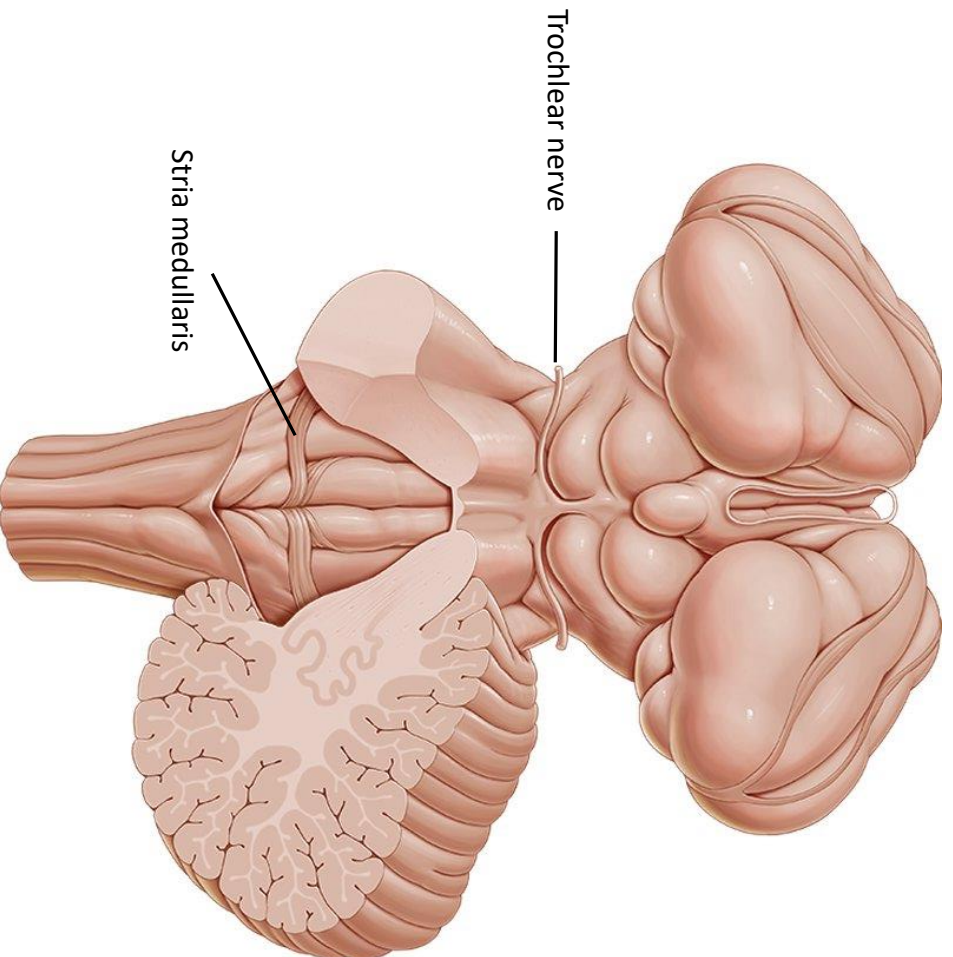




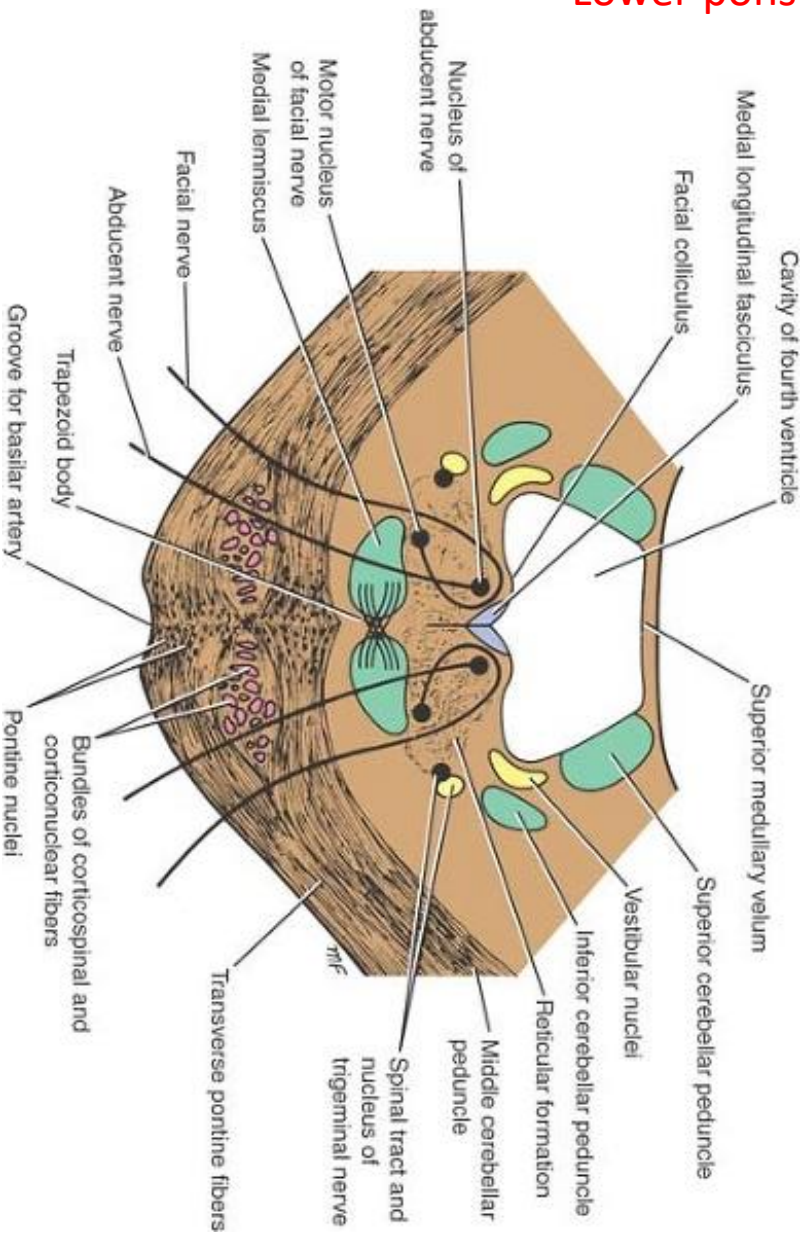




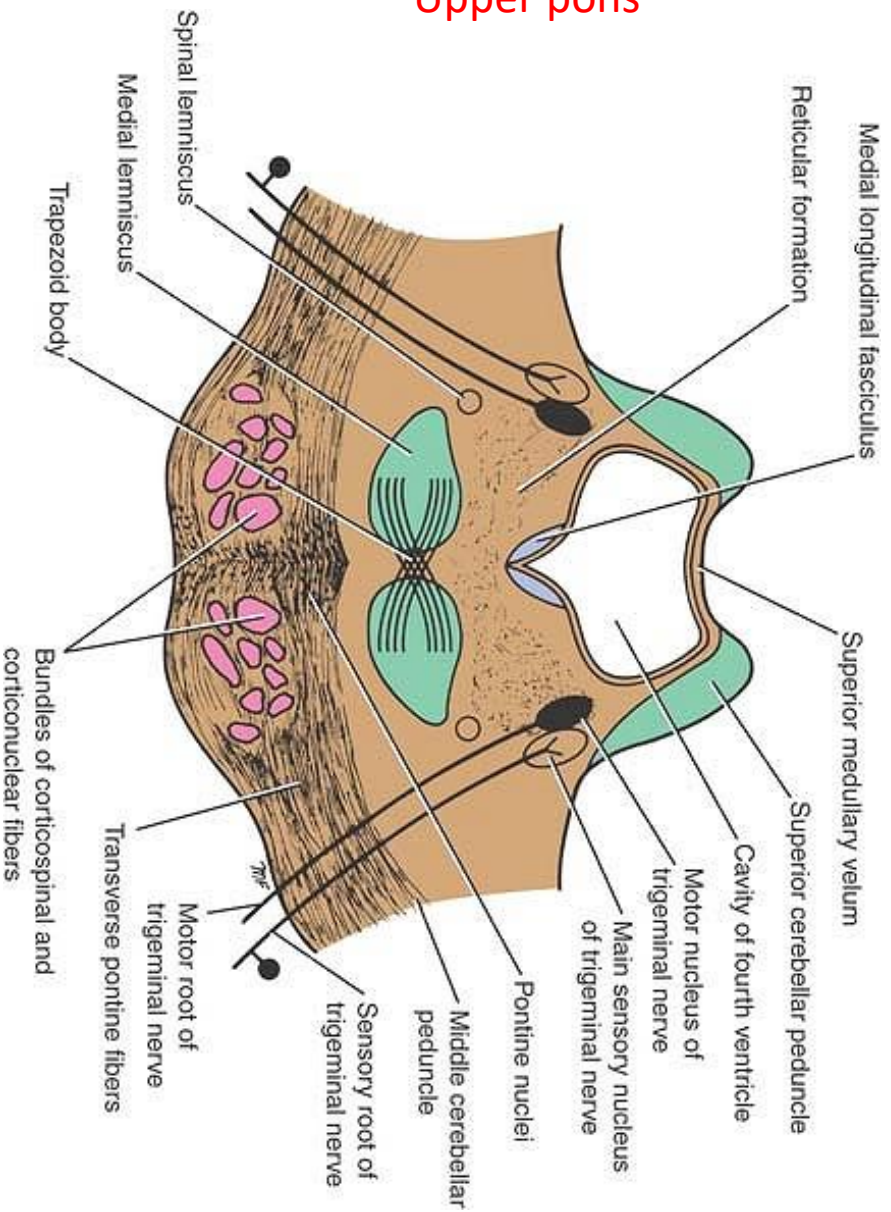
C. Posterior View



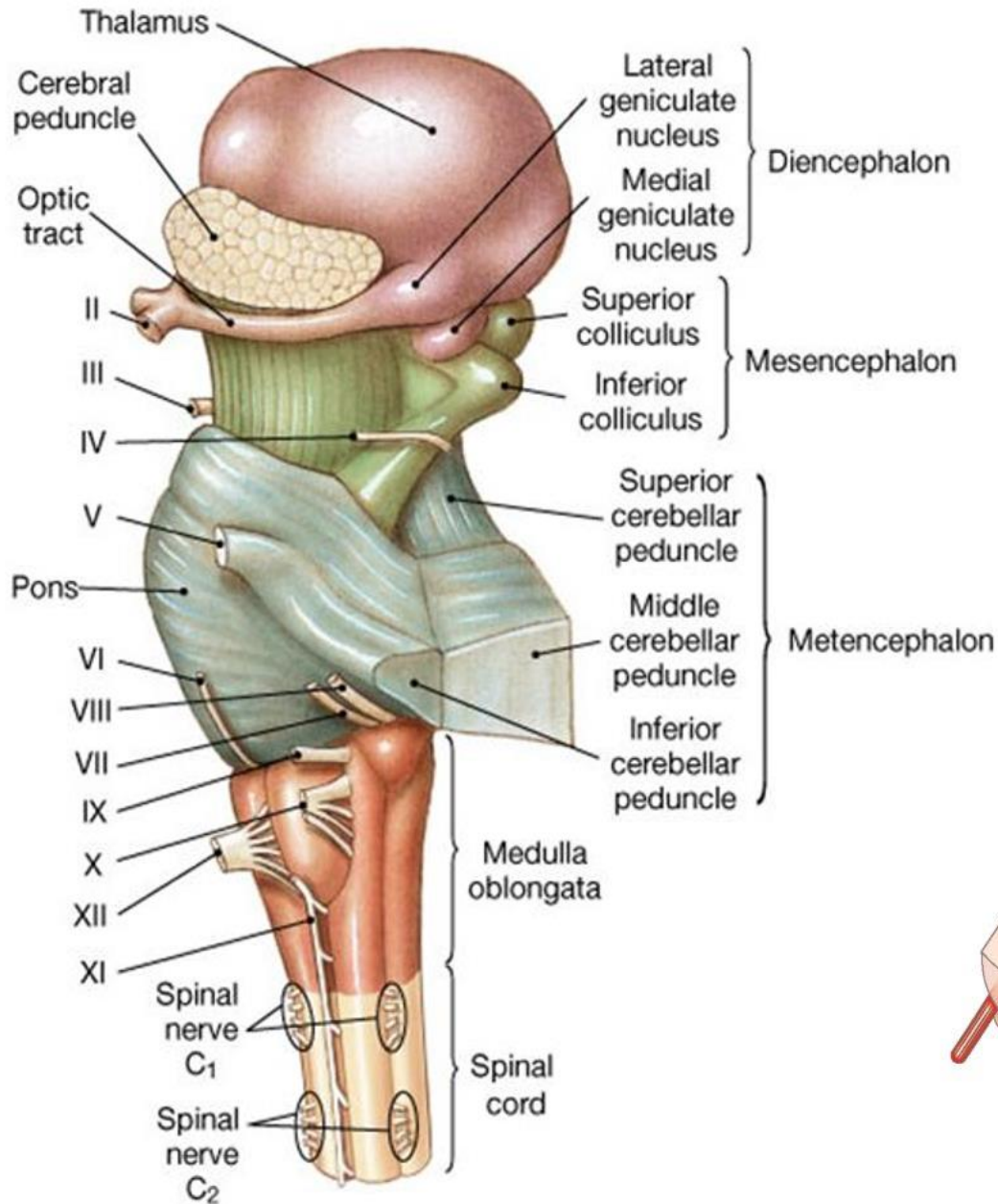
## Lower pons



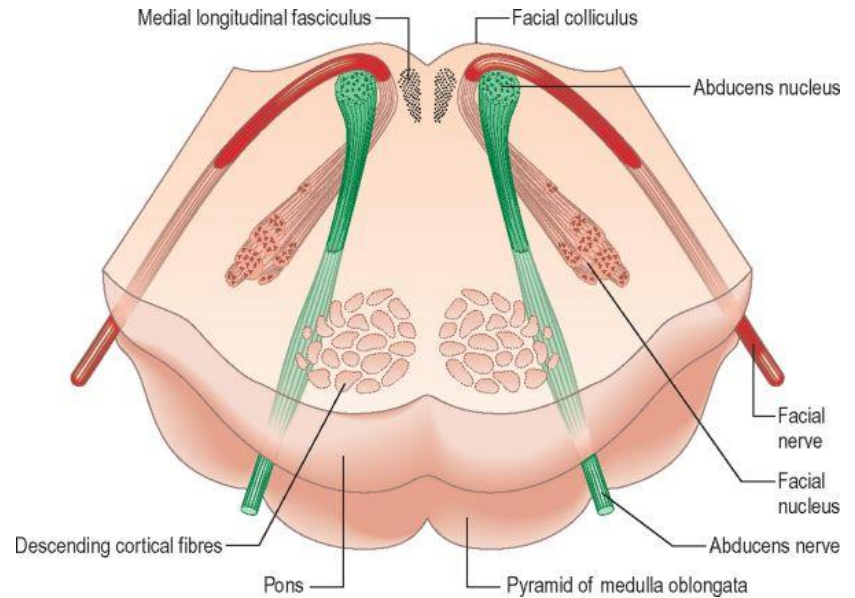
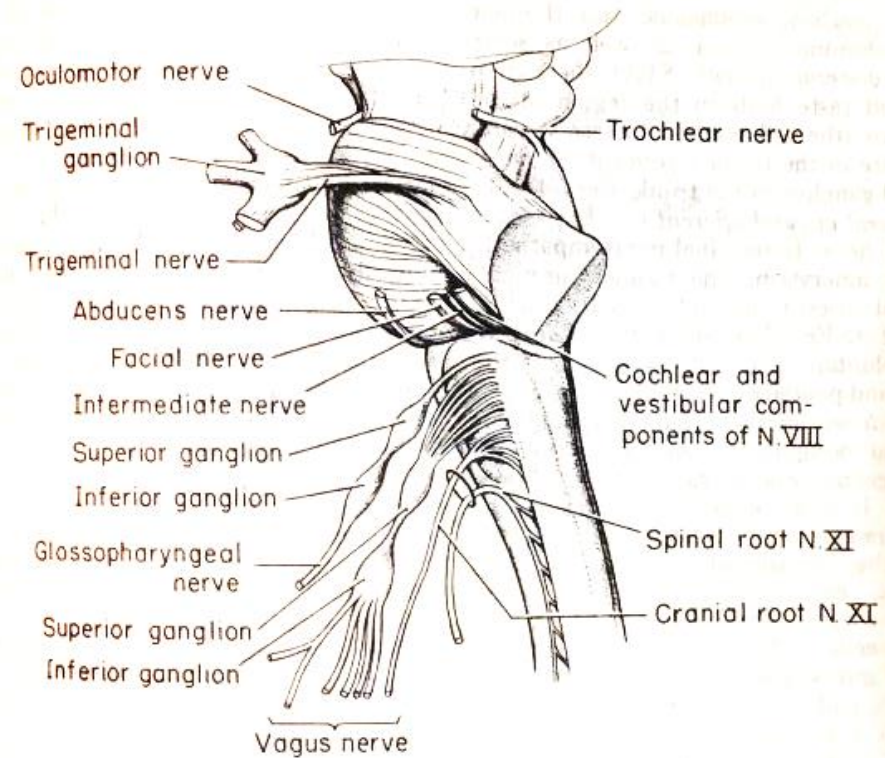
## Upper pons



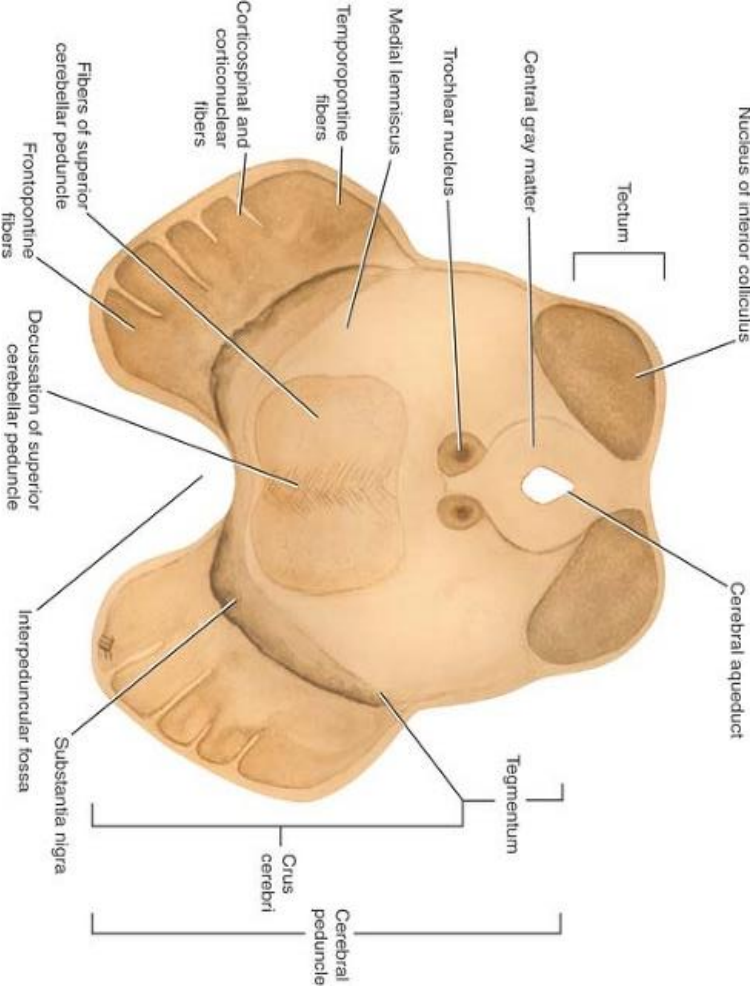
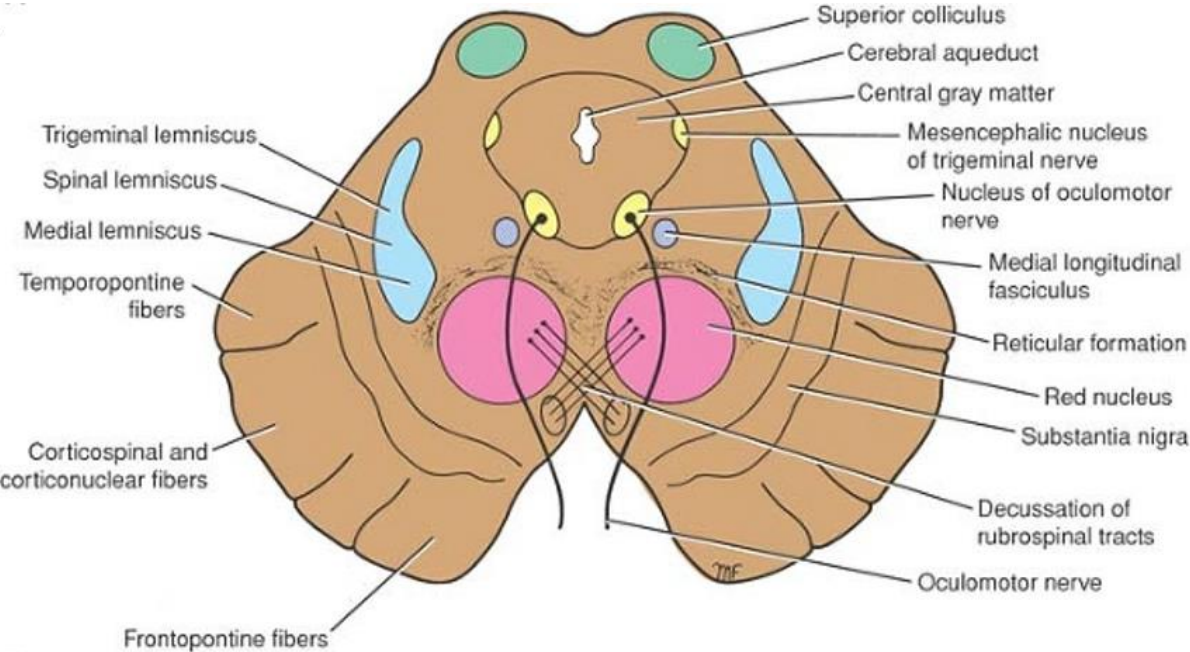
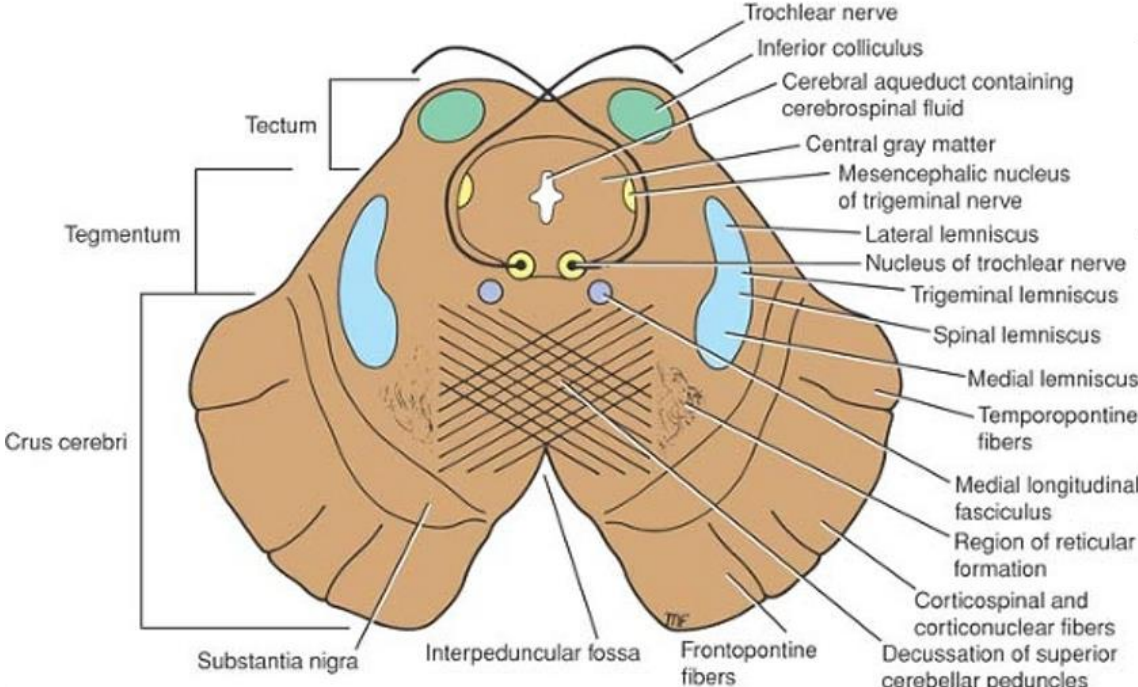




(a) Lateral view

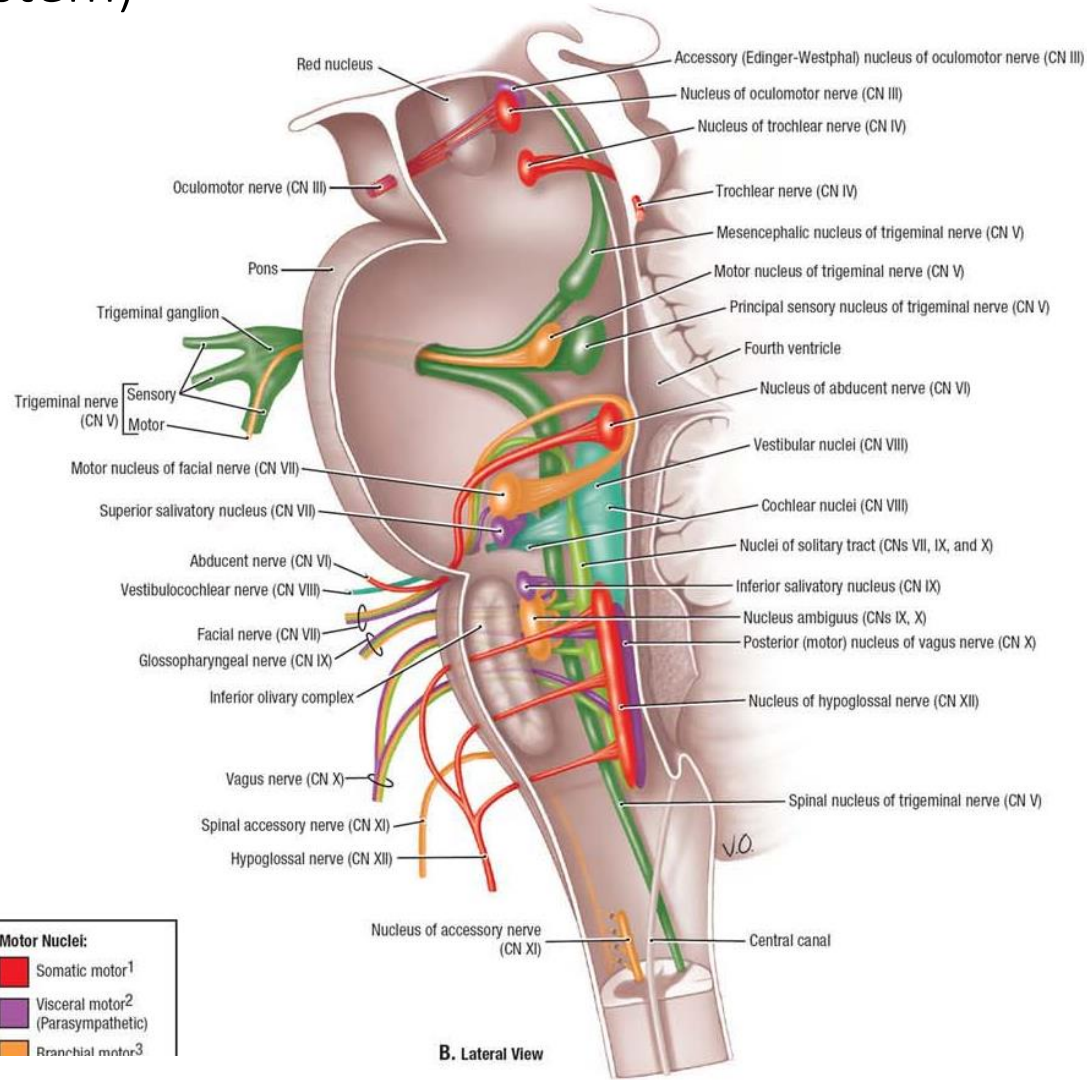
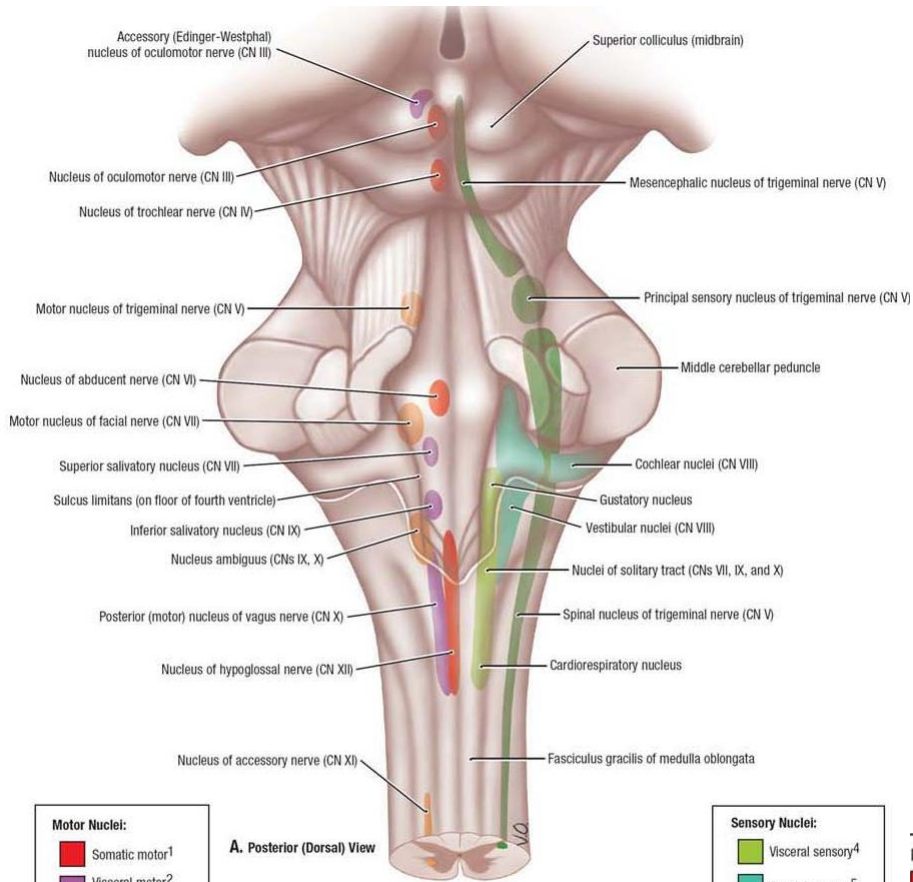


# Midbrain Sections





# Cranial Nerves Nuclei (Brainstem)



**Motor Nuclei:**

Red	Somatic motor <sup>1</sup>
Purple	Visceral motor <sup>2</sup> (Parasympathetic)
Orange	Branchial motor <sup>3</sup>

A. Posterior (Dorsal) View

**Sensory Nuclei:**

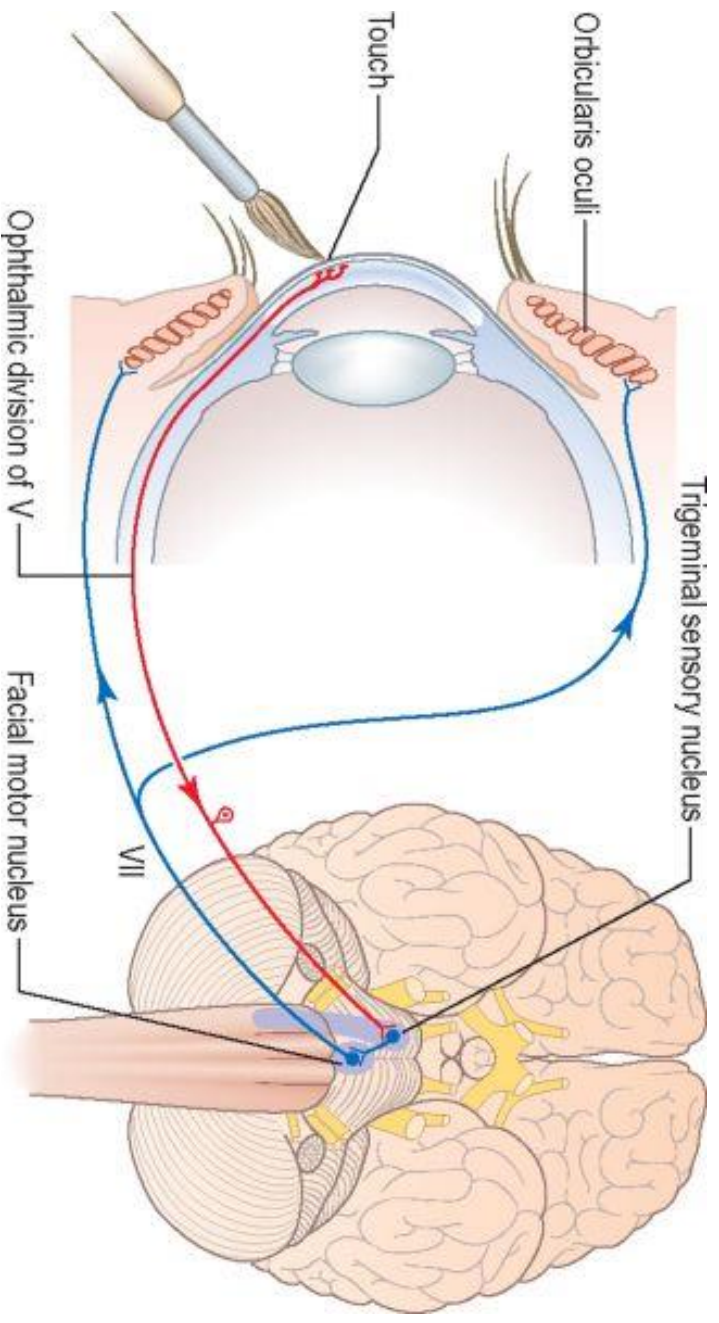
Light Green	Visceral sensory <sup>4</sup>
Teal	Special sensory <sup>5</sup>
Dark Green	General sensory <sup>6</sup>

**Motor Nuclei:**

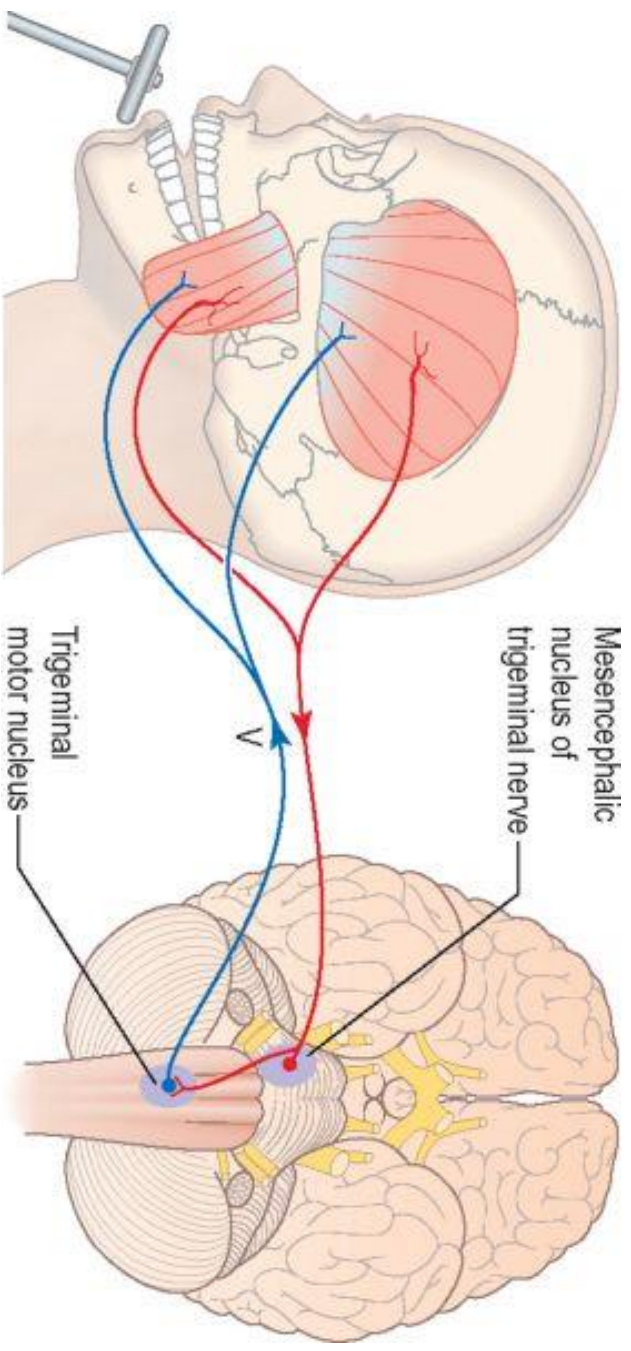
Red	Somatic motor <sup>1</sup>
Purple	Visceral motor <sup>2</sup> (Parasympathetic)
Orange	Branchial motor <sup>3</sup>

B. Lateral View

# Corneal reflex



# Jaw-jerk reflex



END