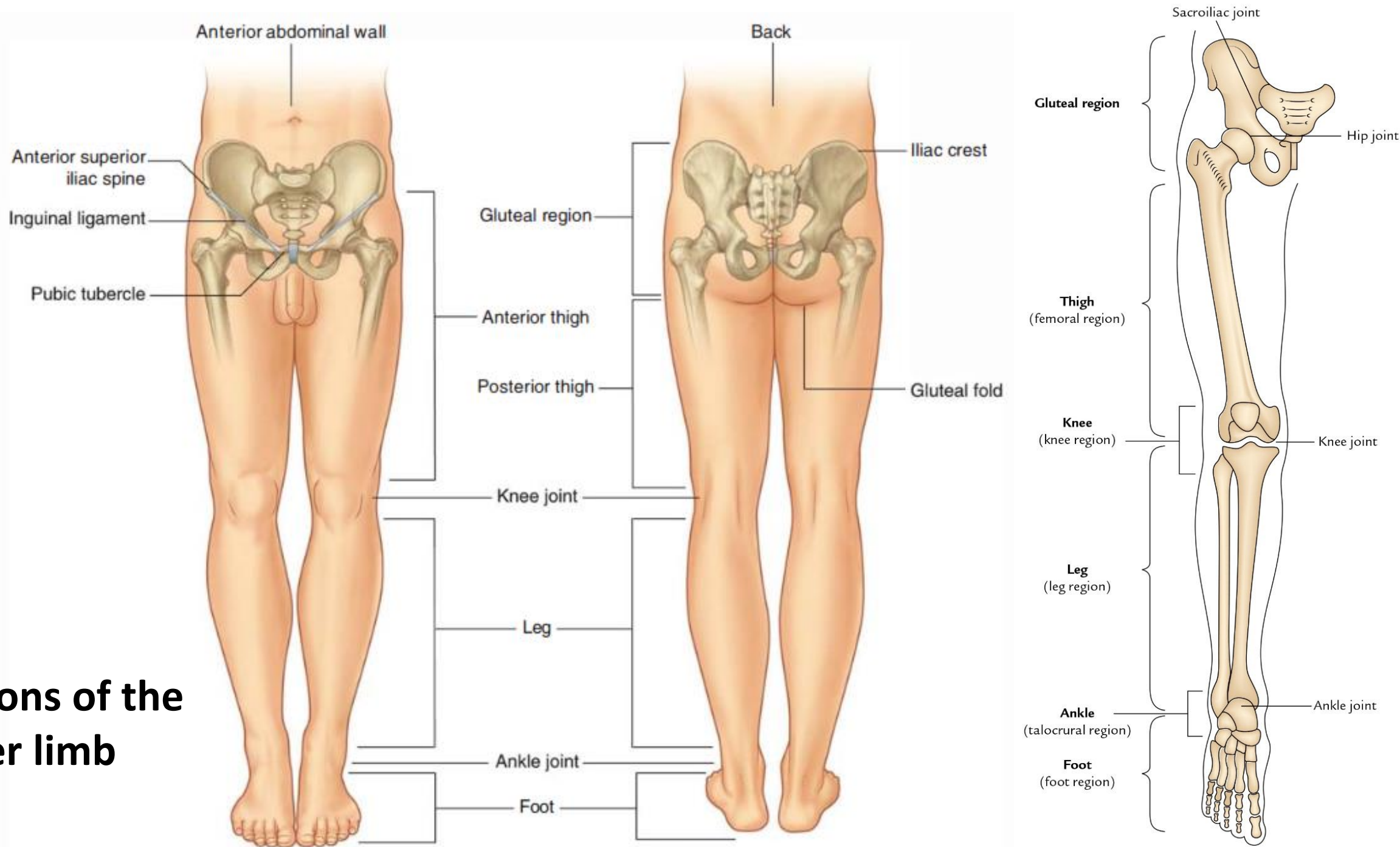


# The Lower Limb

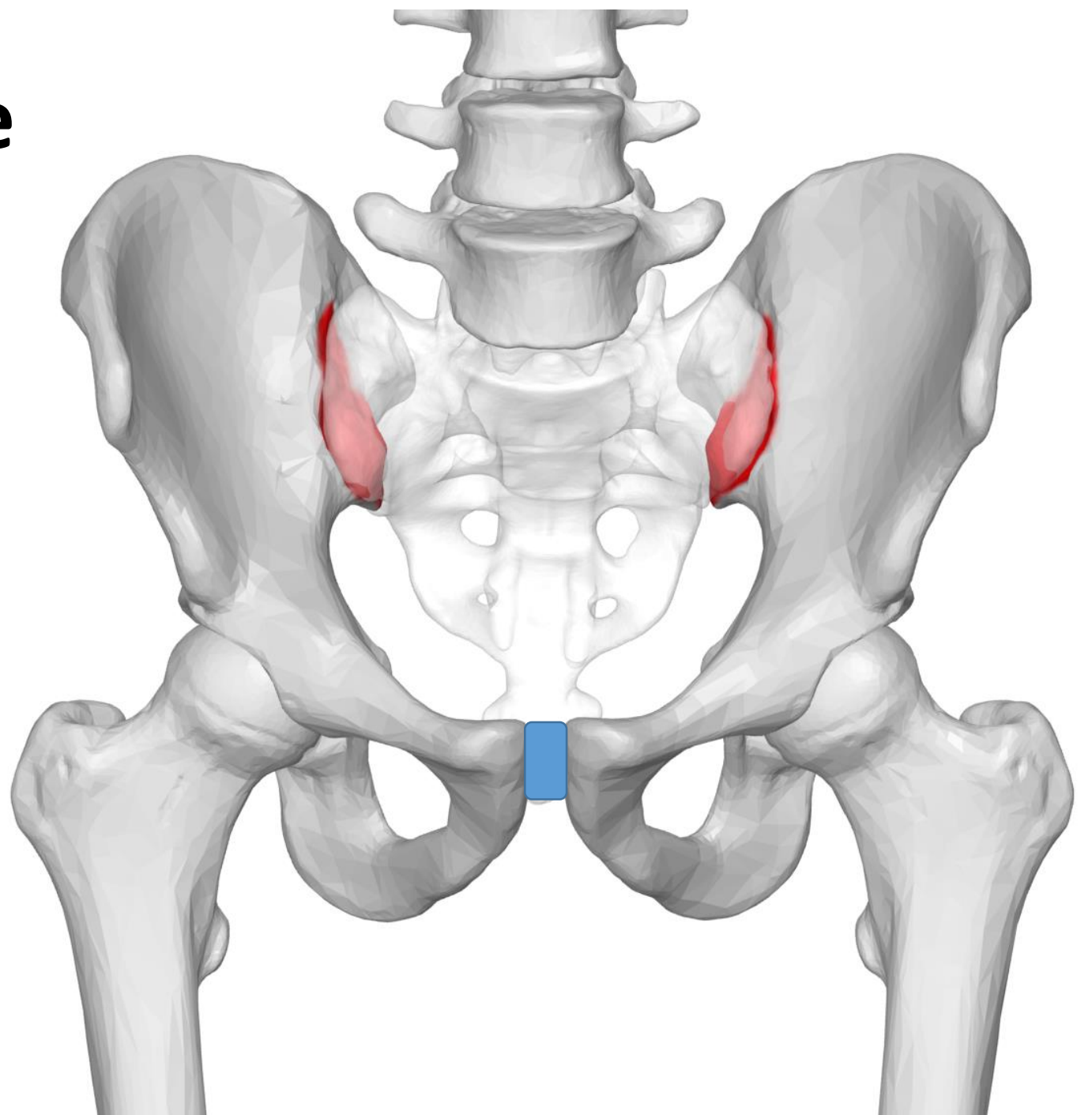
## Lecture objectives

- Identify the major regions of the lower limb
- Name the main bony features of the bones of the pelvic girdle
- Study the arrangement of the lumbar & sacral plexuses and the nerves of the lower limb

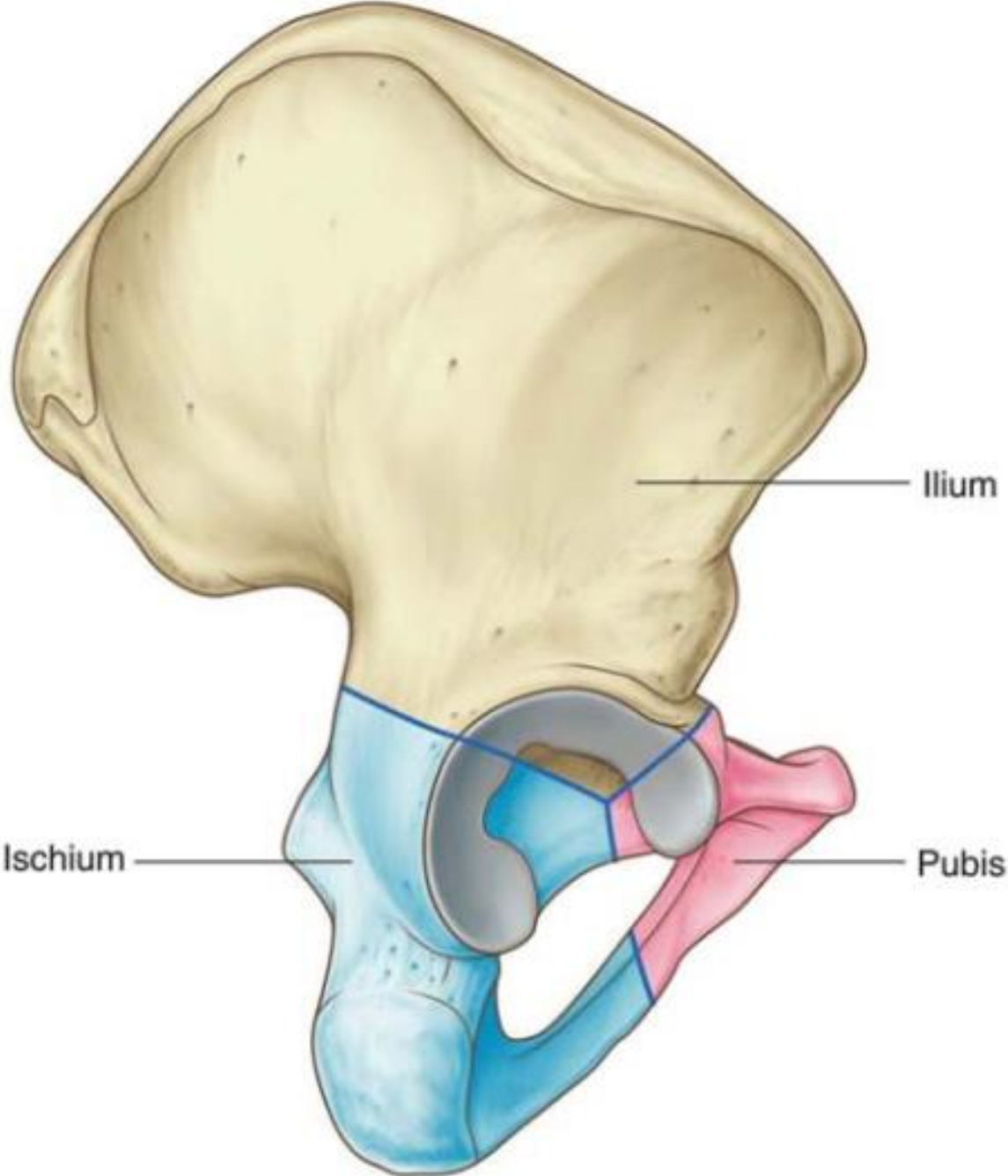
# Regions of the lower limb

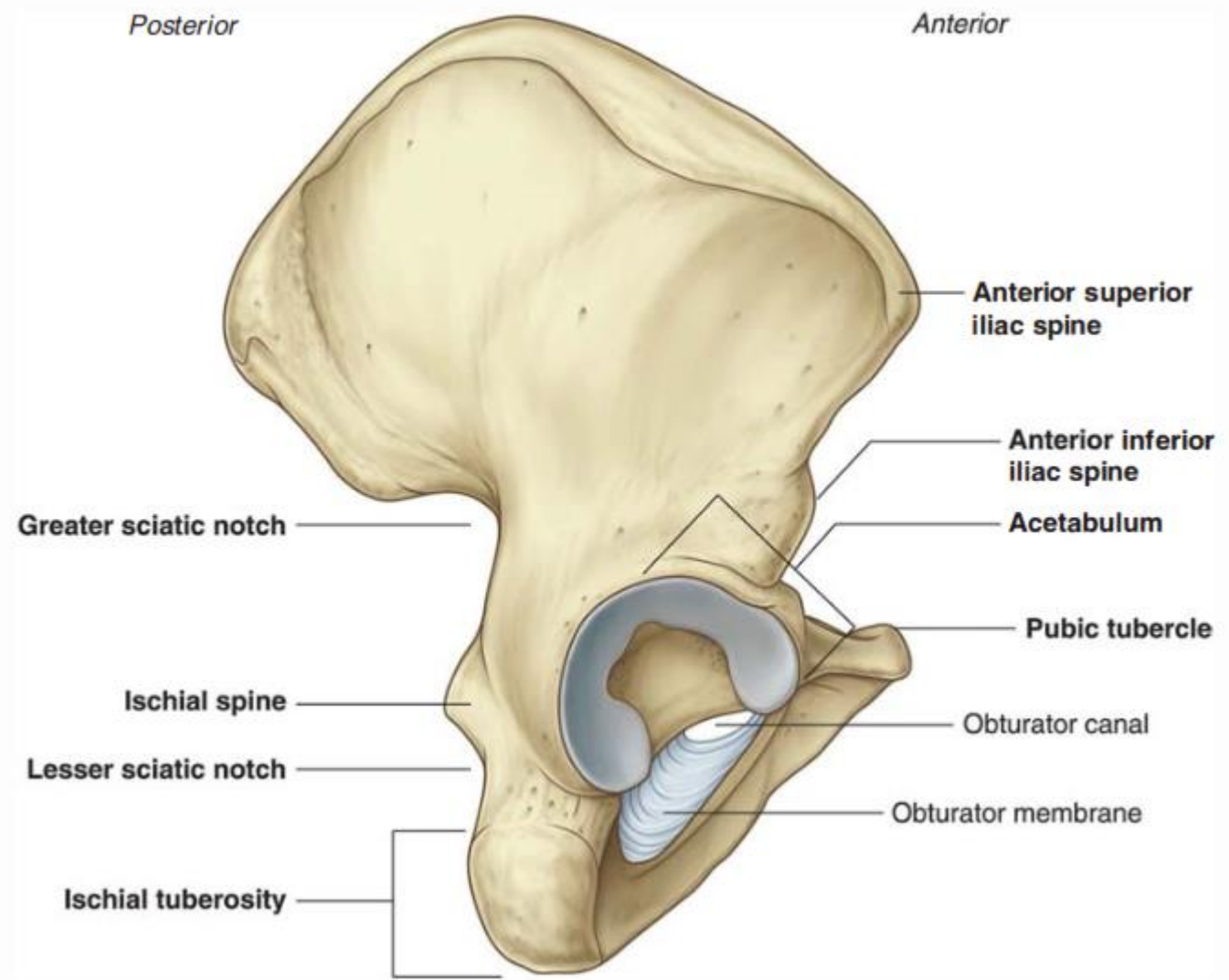
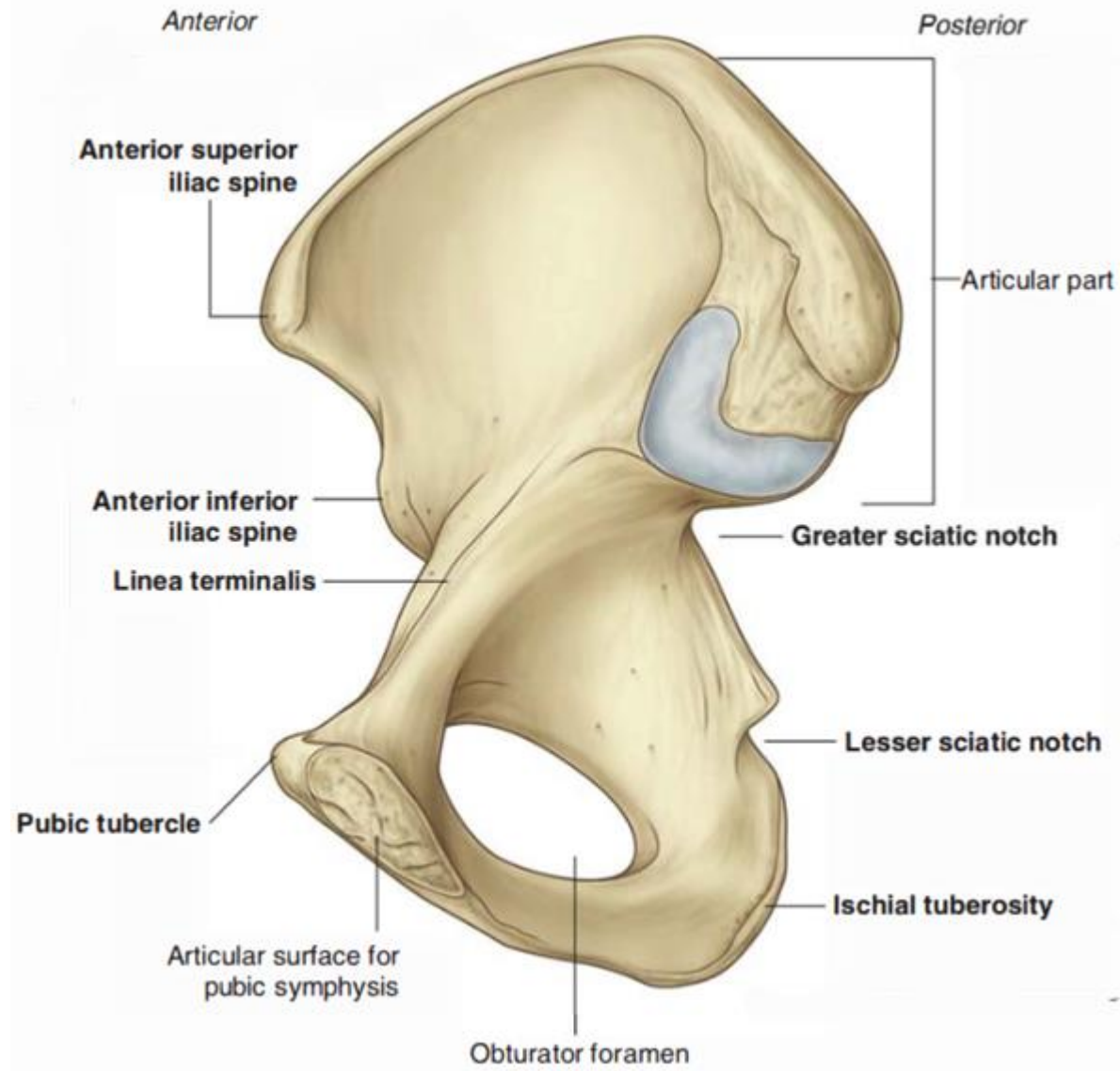


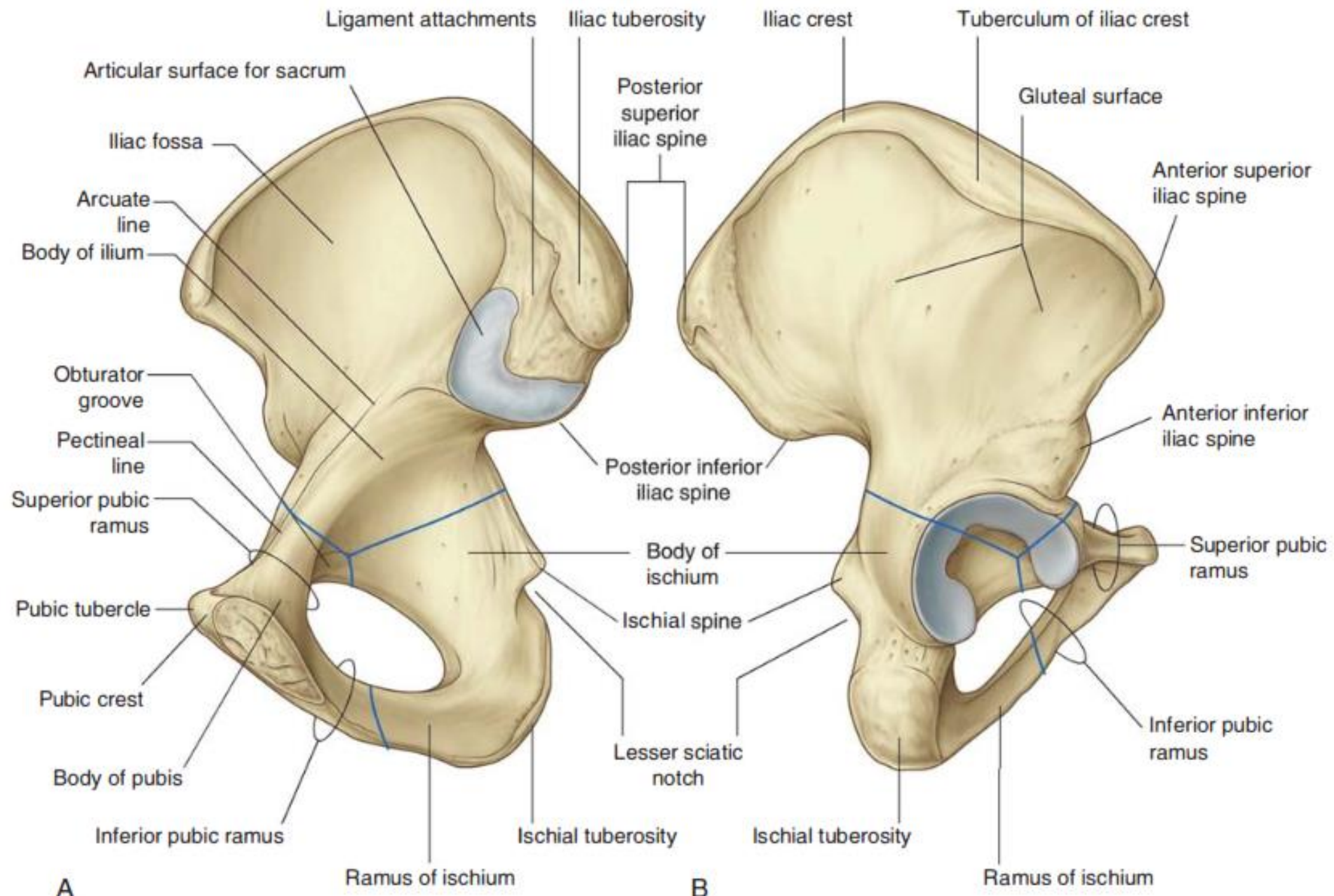
# Bones of pelvic girdle



# The hip bone



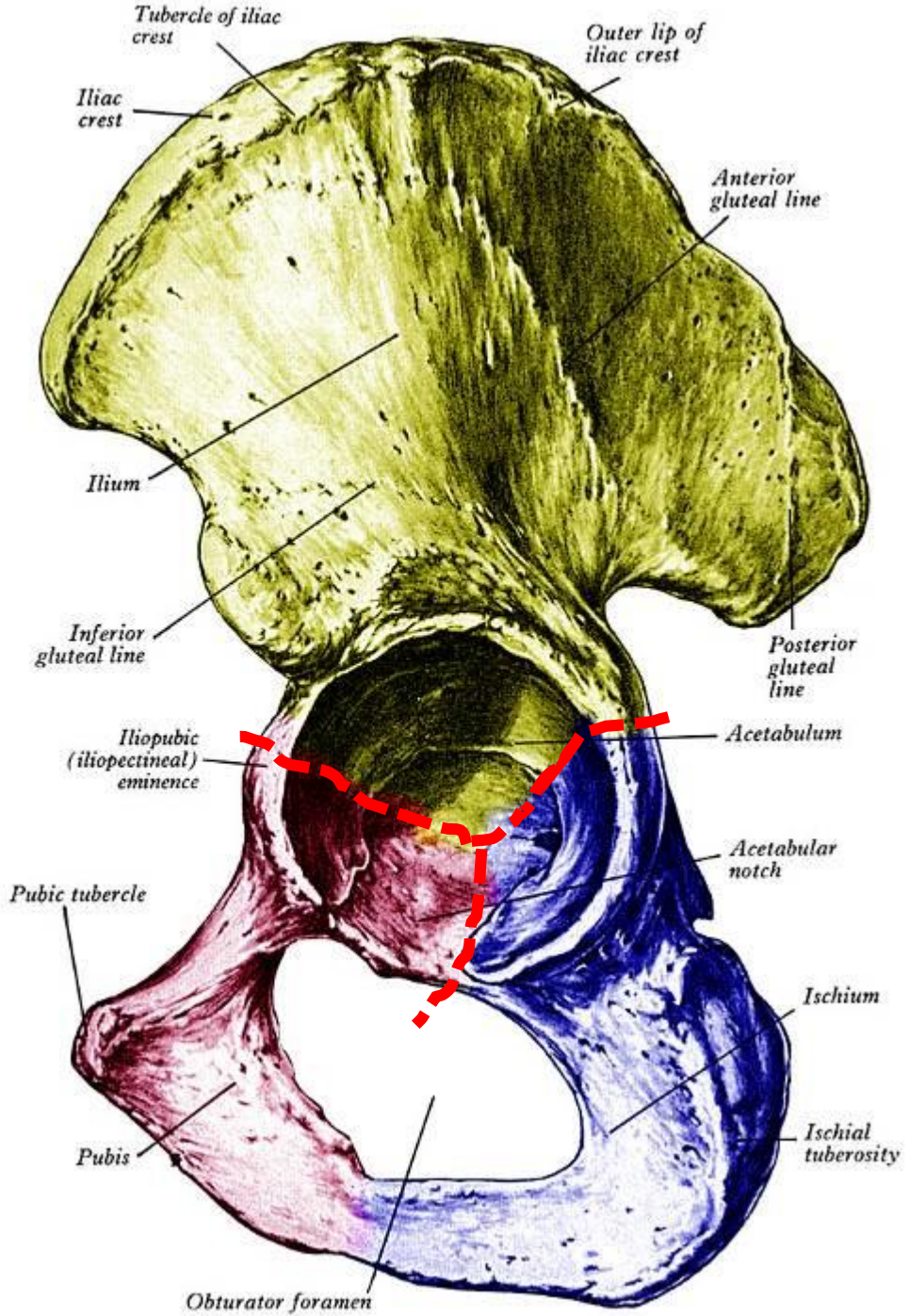




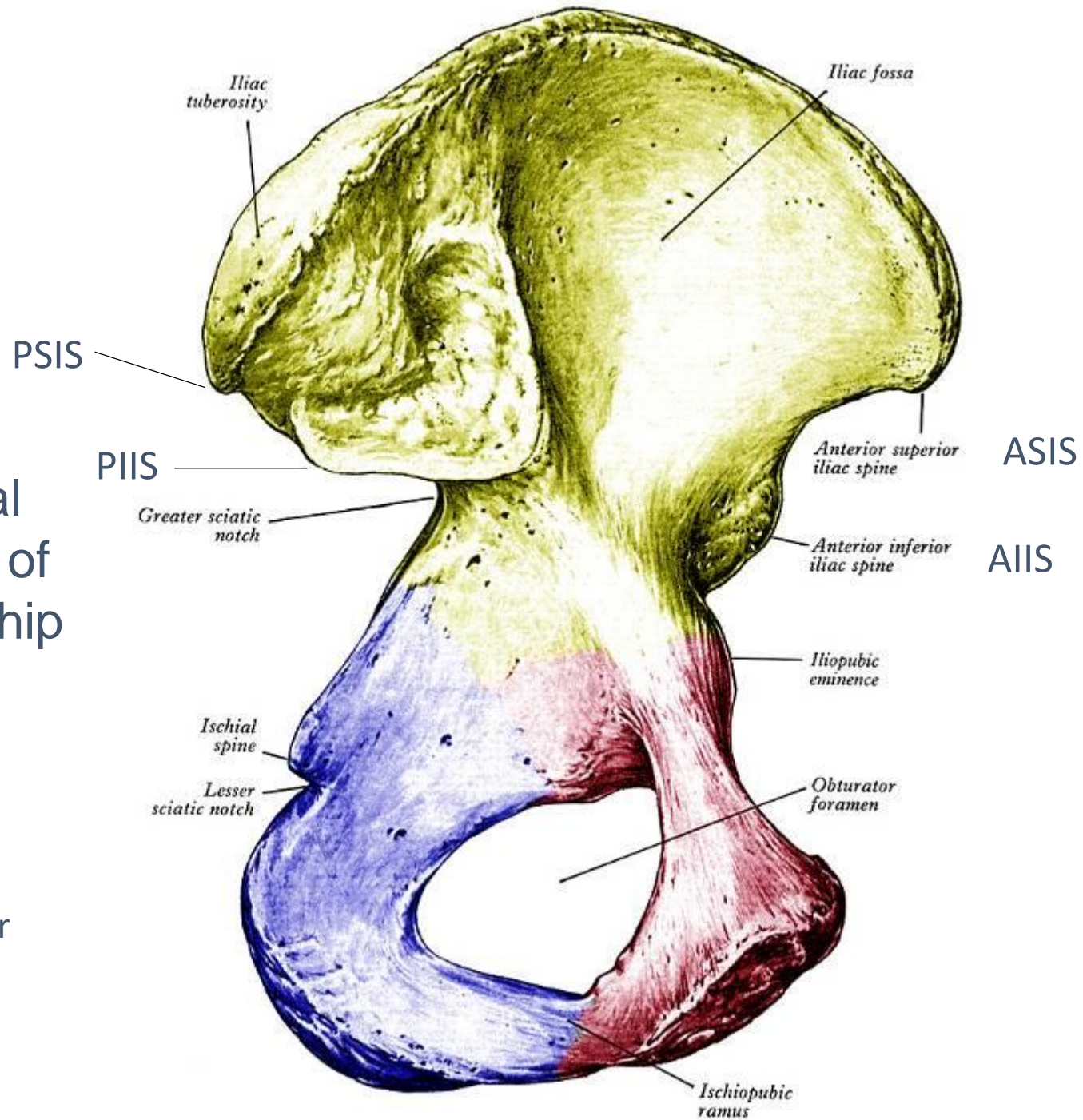
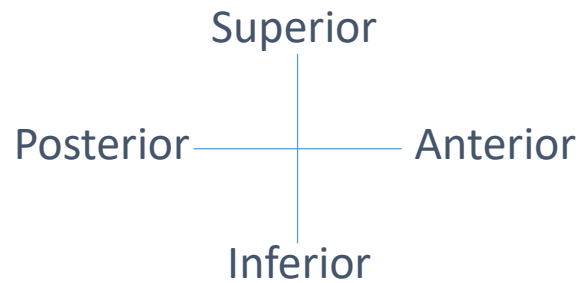
A

B

Lateral aspect of the left hip

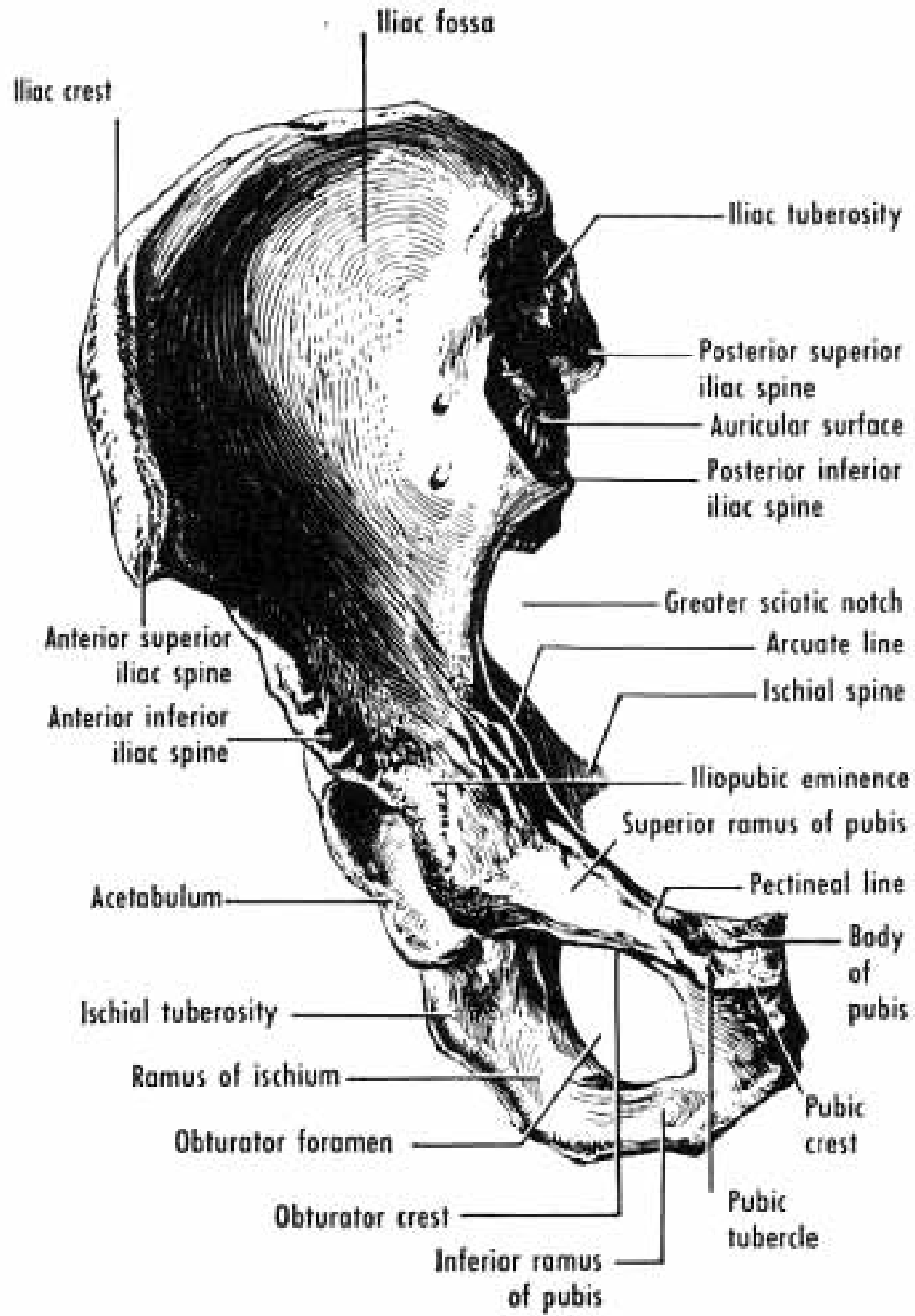


Medial aspect of the left hip



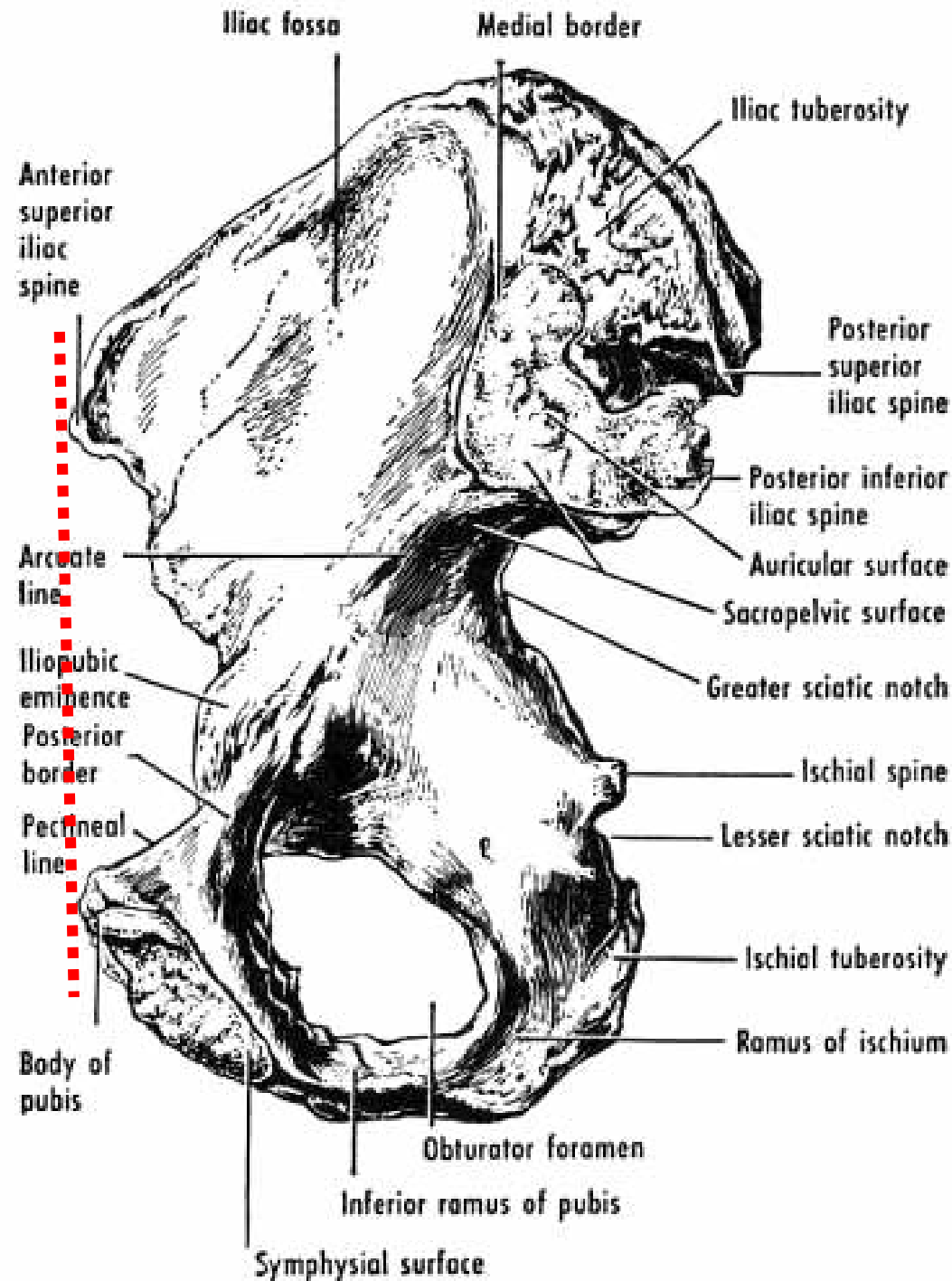
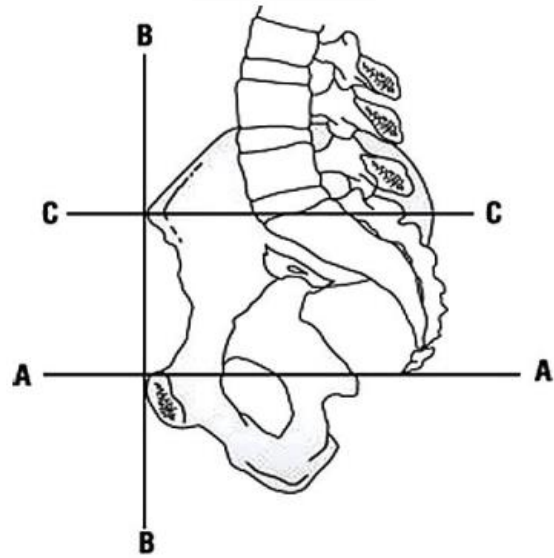


# Anterior aspect of the hip

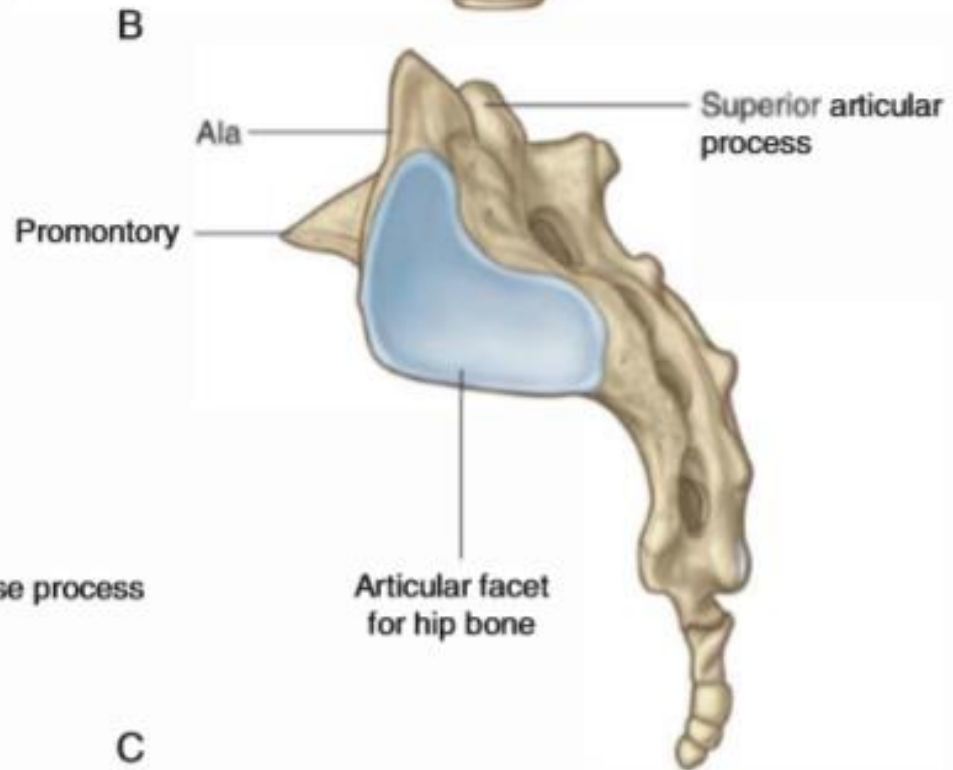
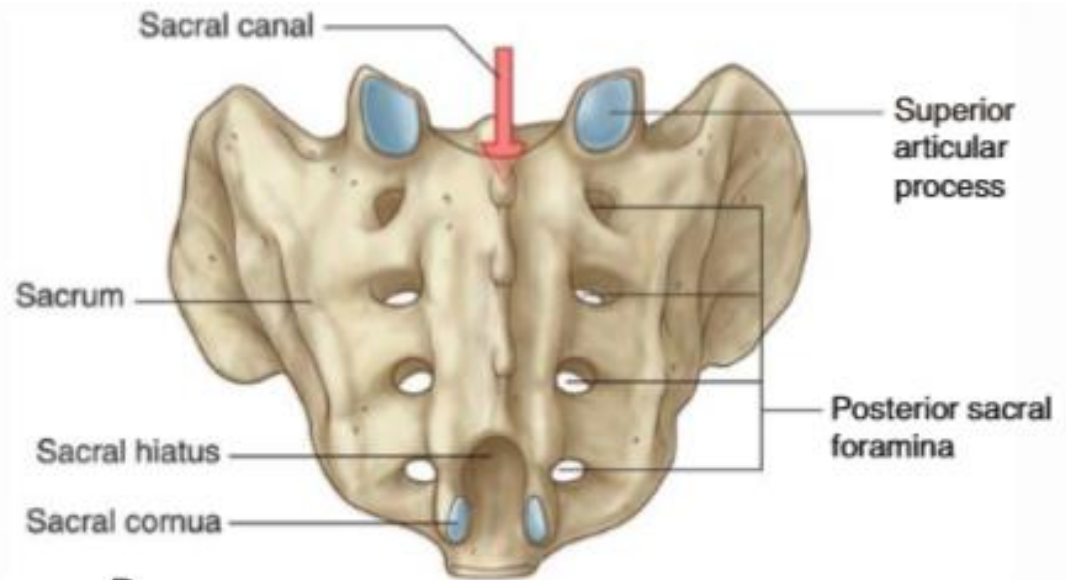
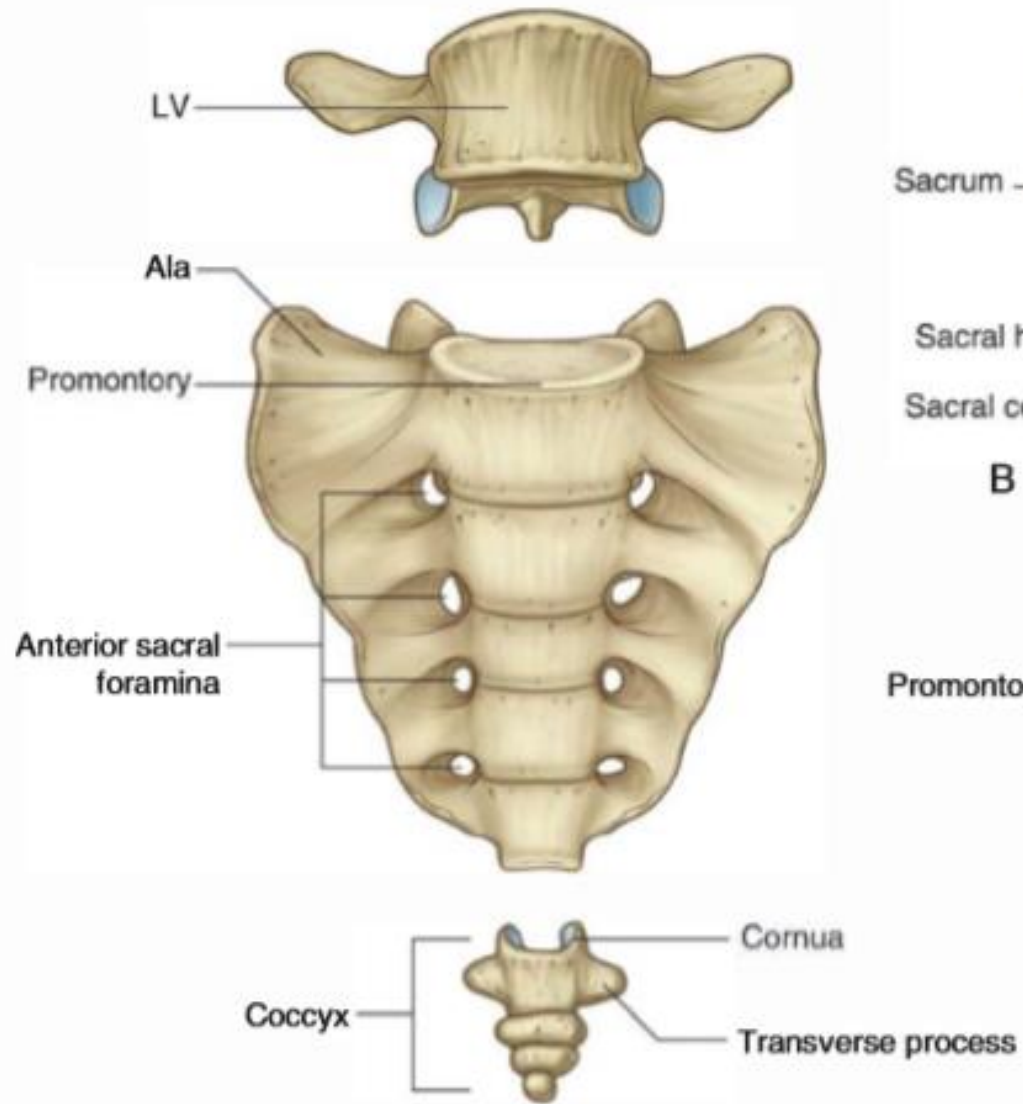


# Orientation of the hip bone

## Pelvic tilt



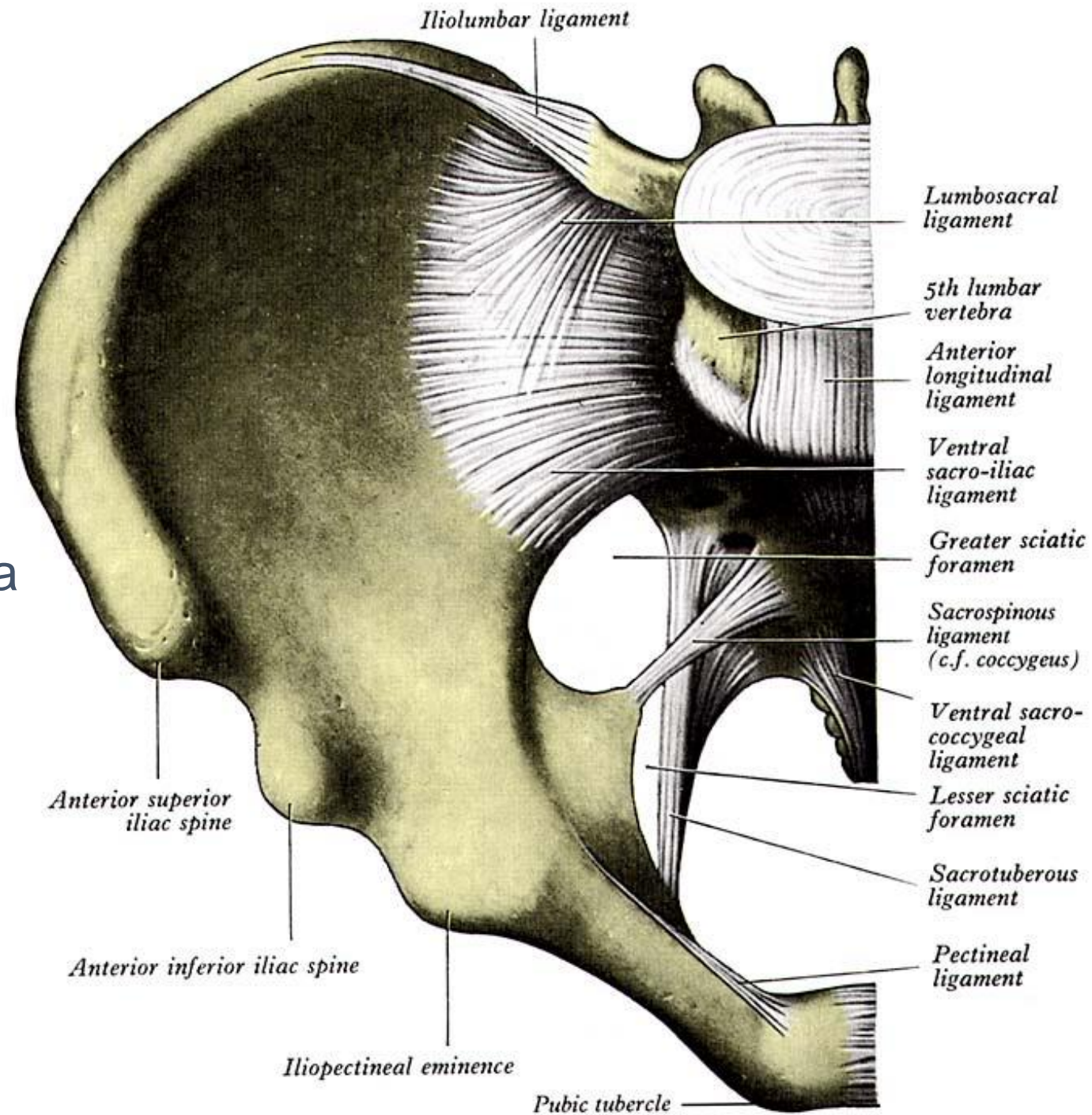
# Sacrum

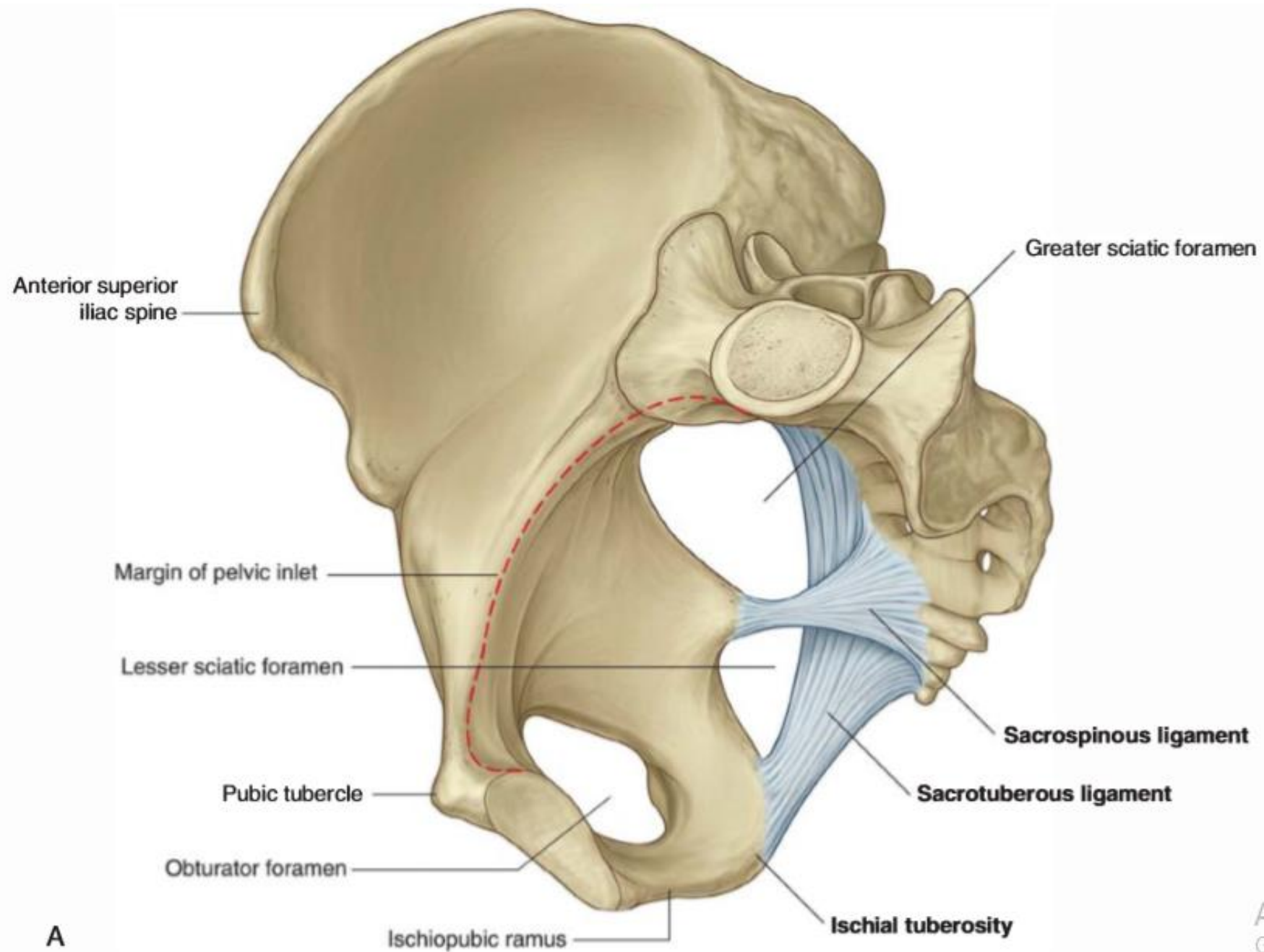


A

C

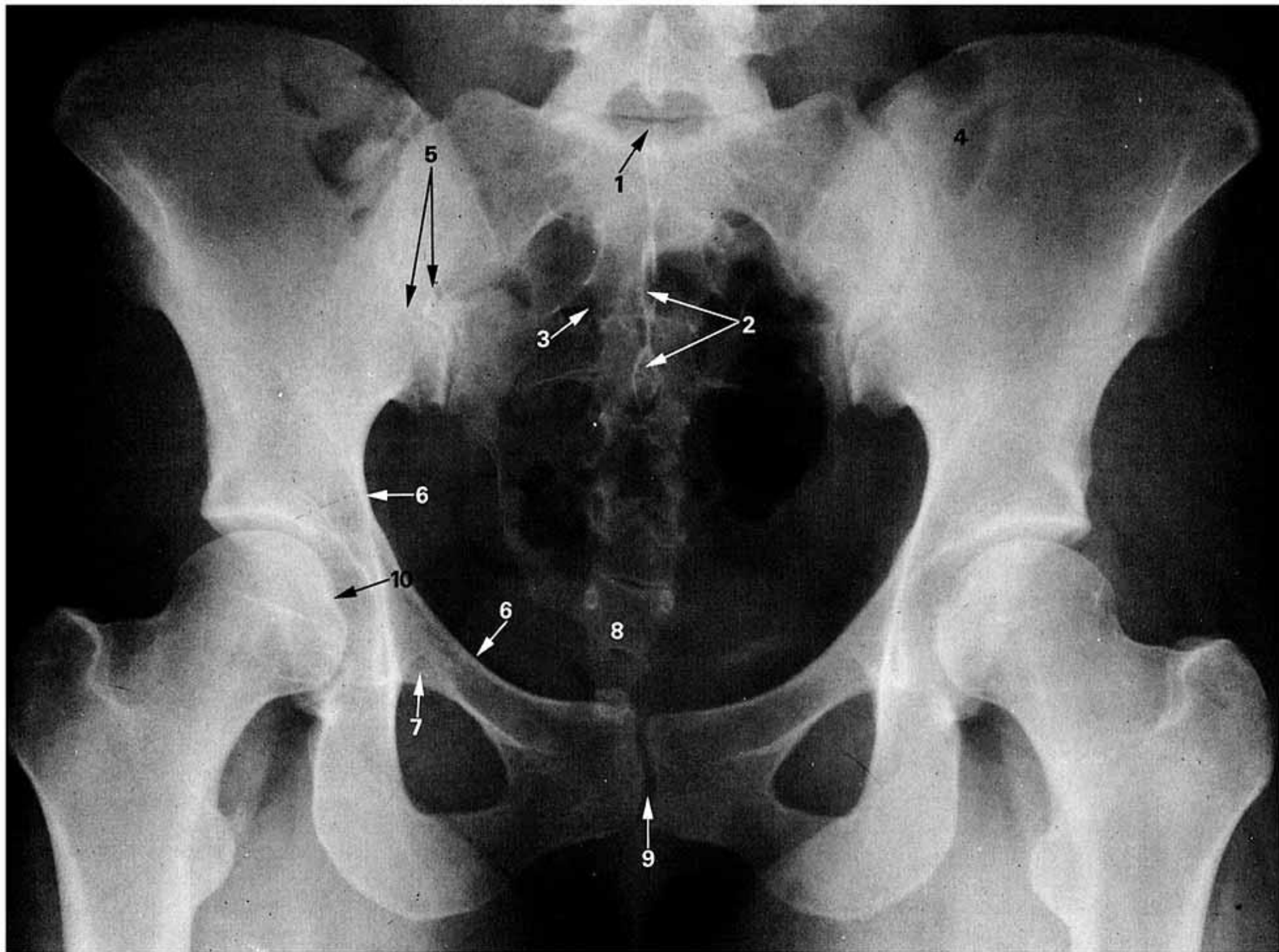
# The sciatic foramina



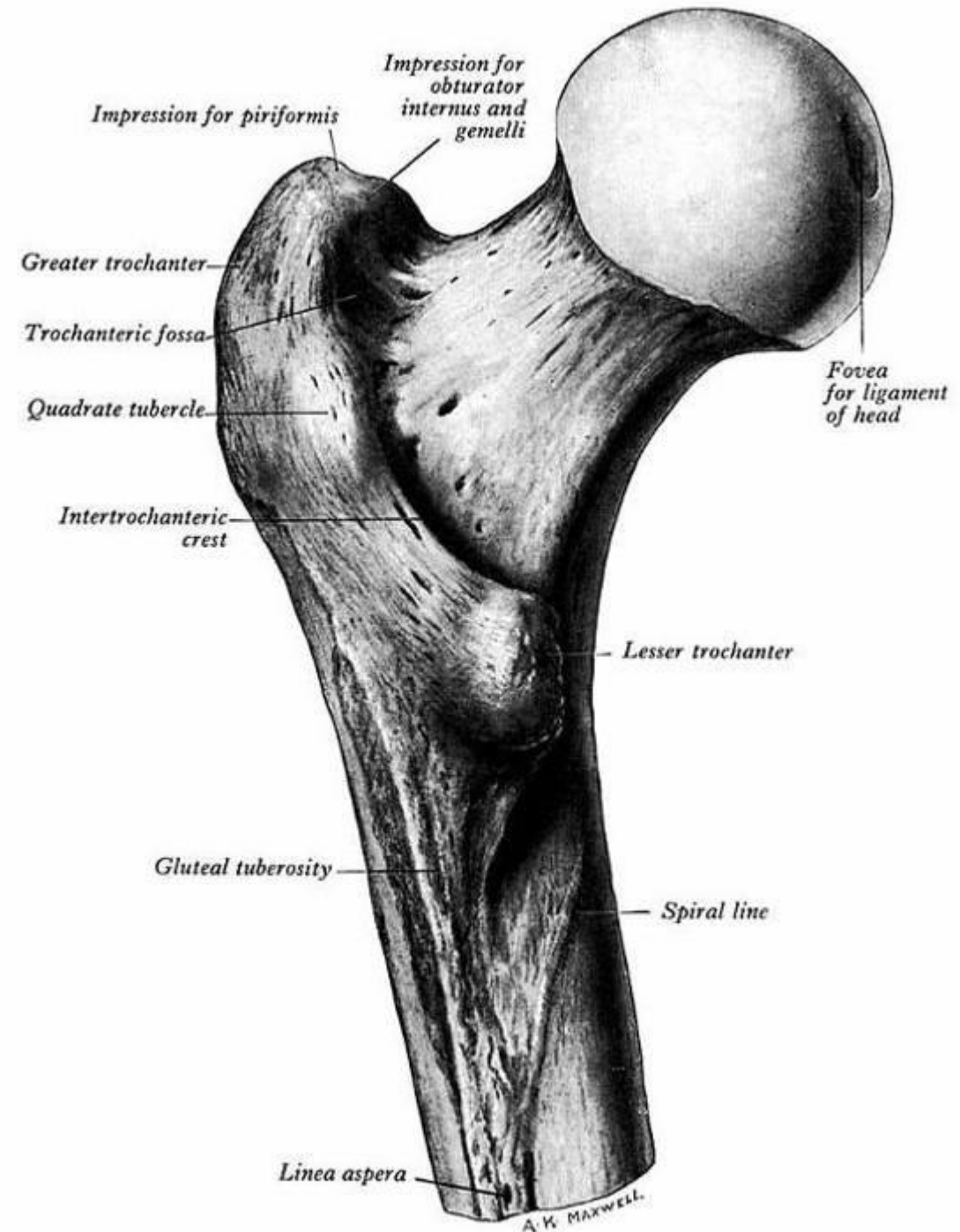


A

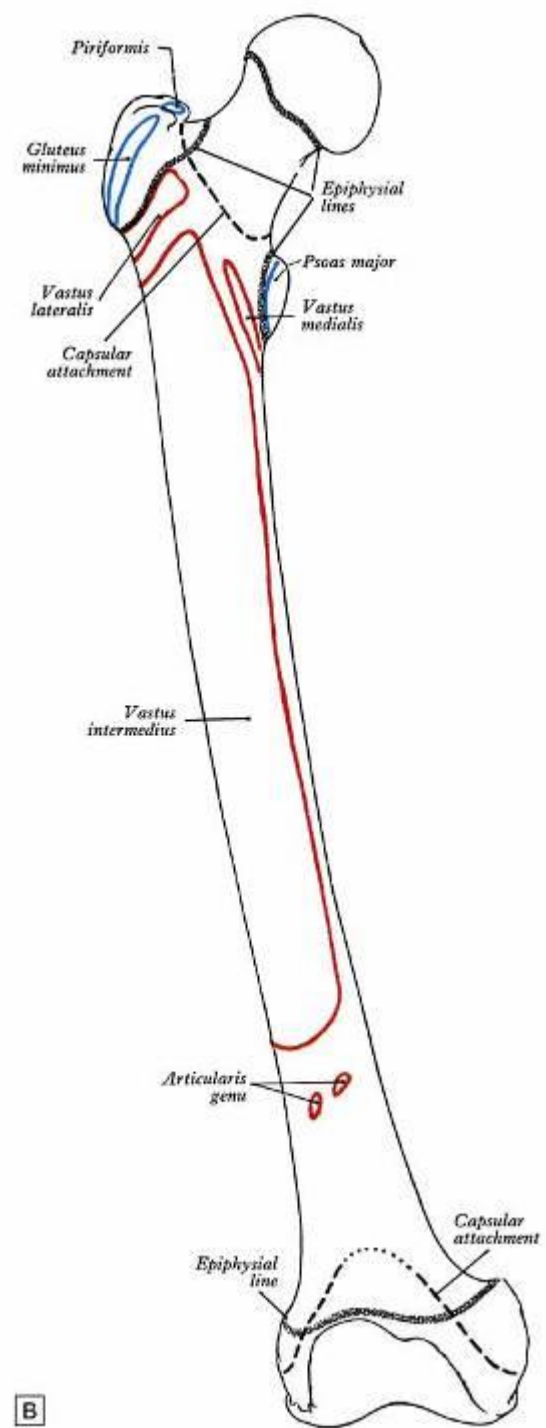
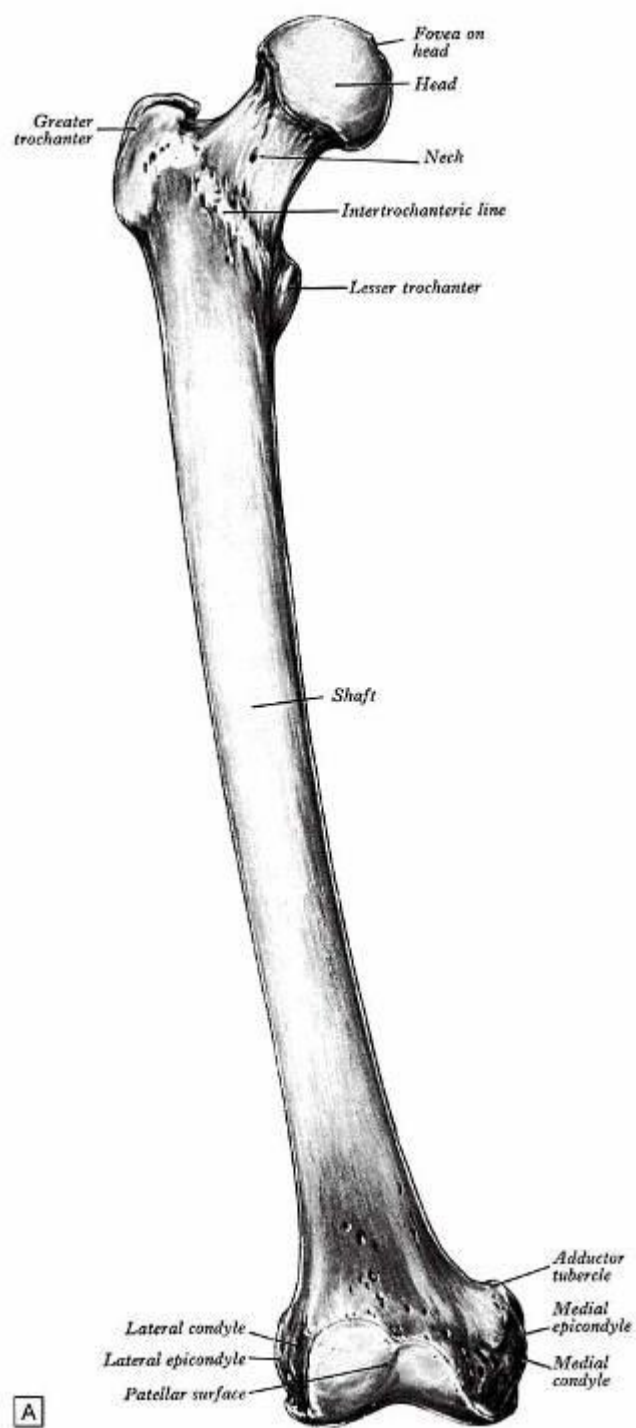
A  
C



Posterior aspect of the proximal end of the femur

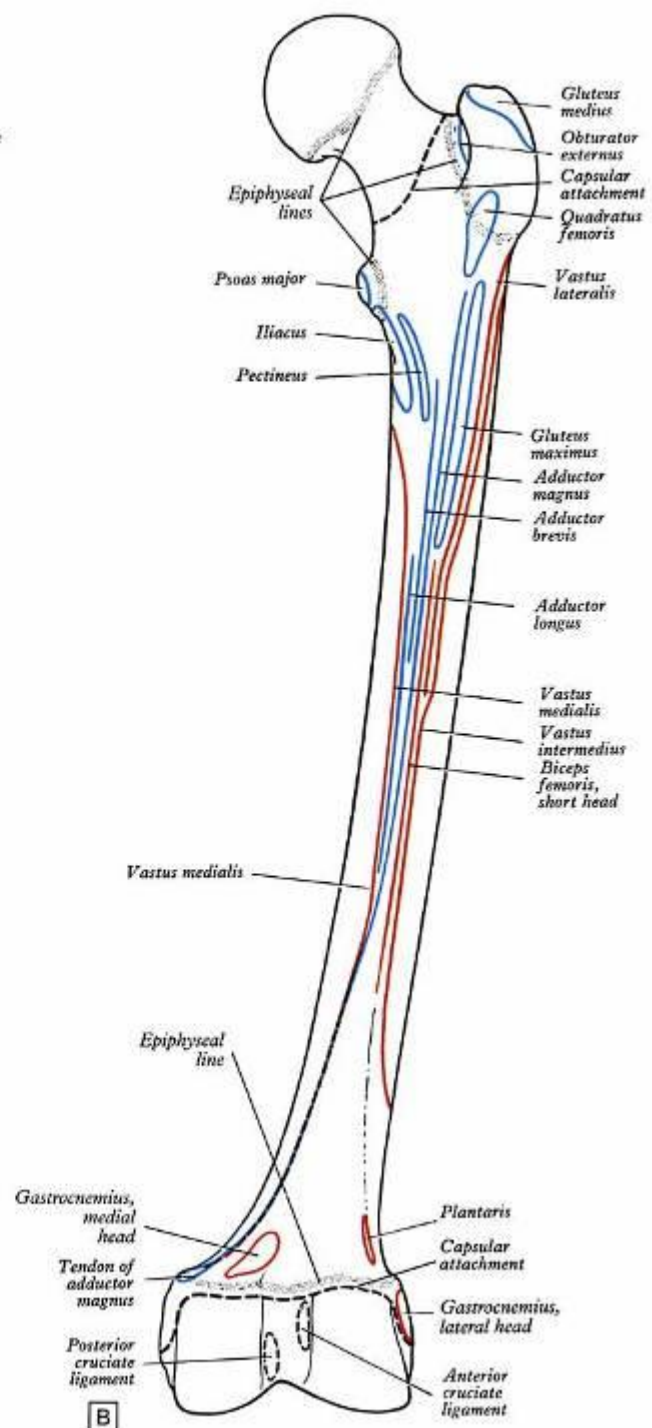
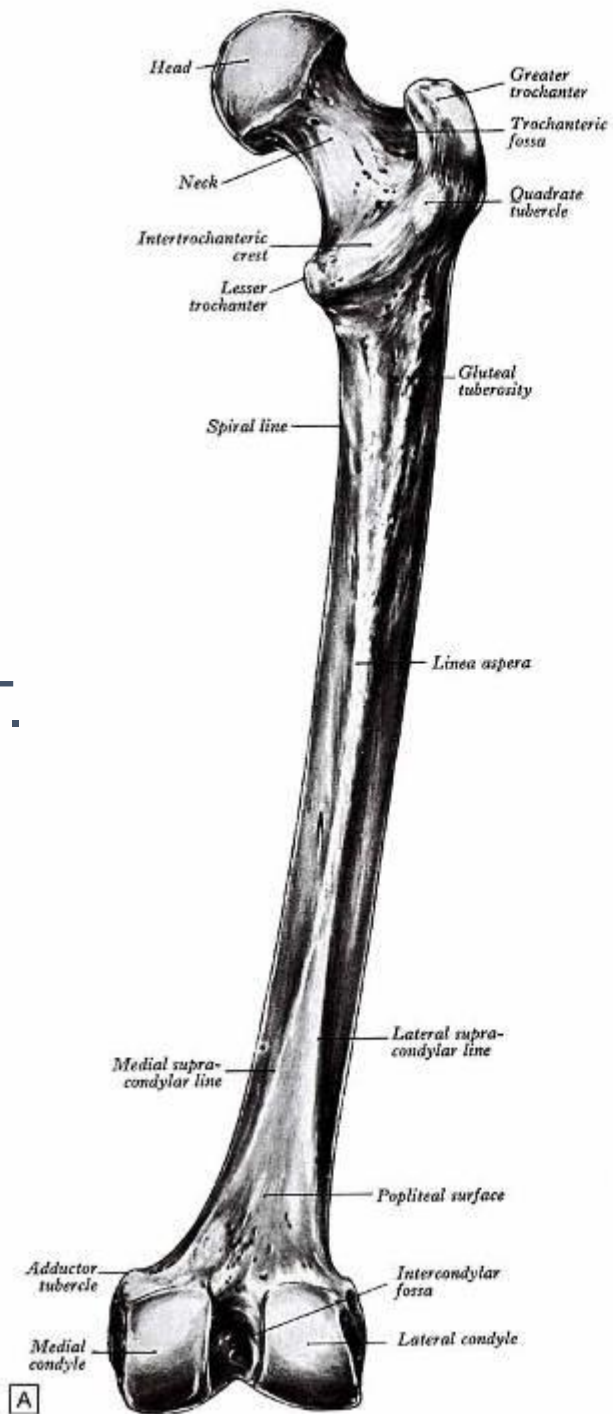


ANT.

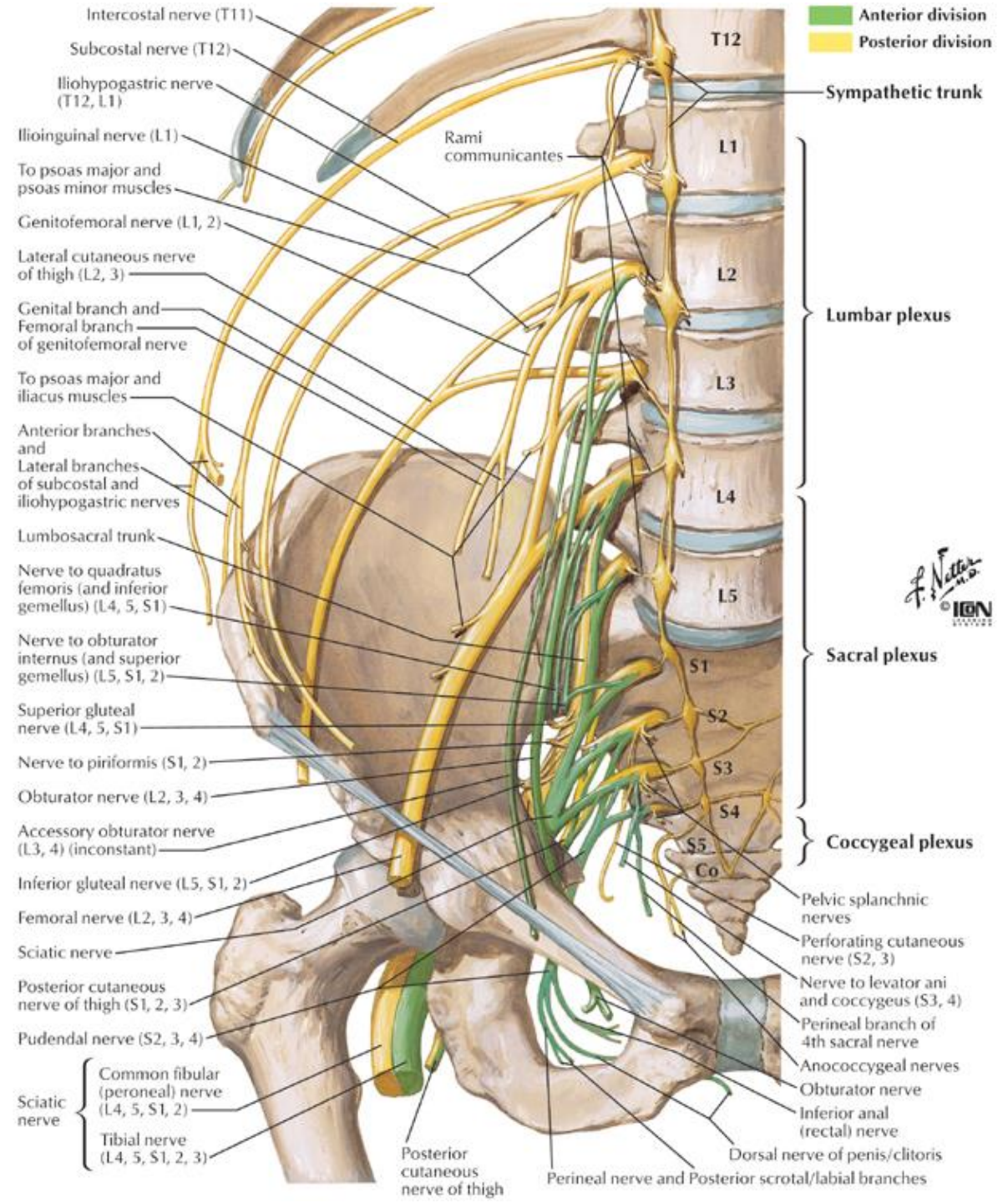


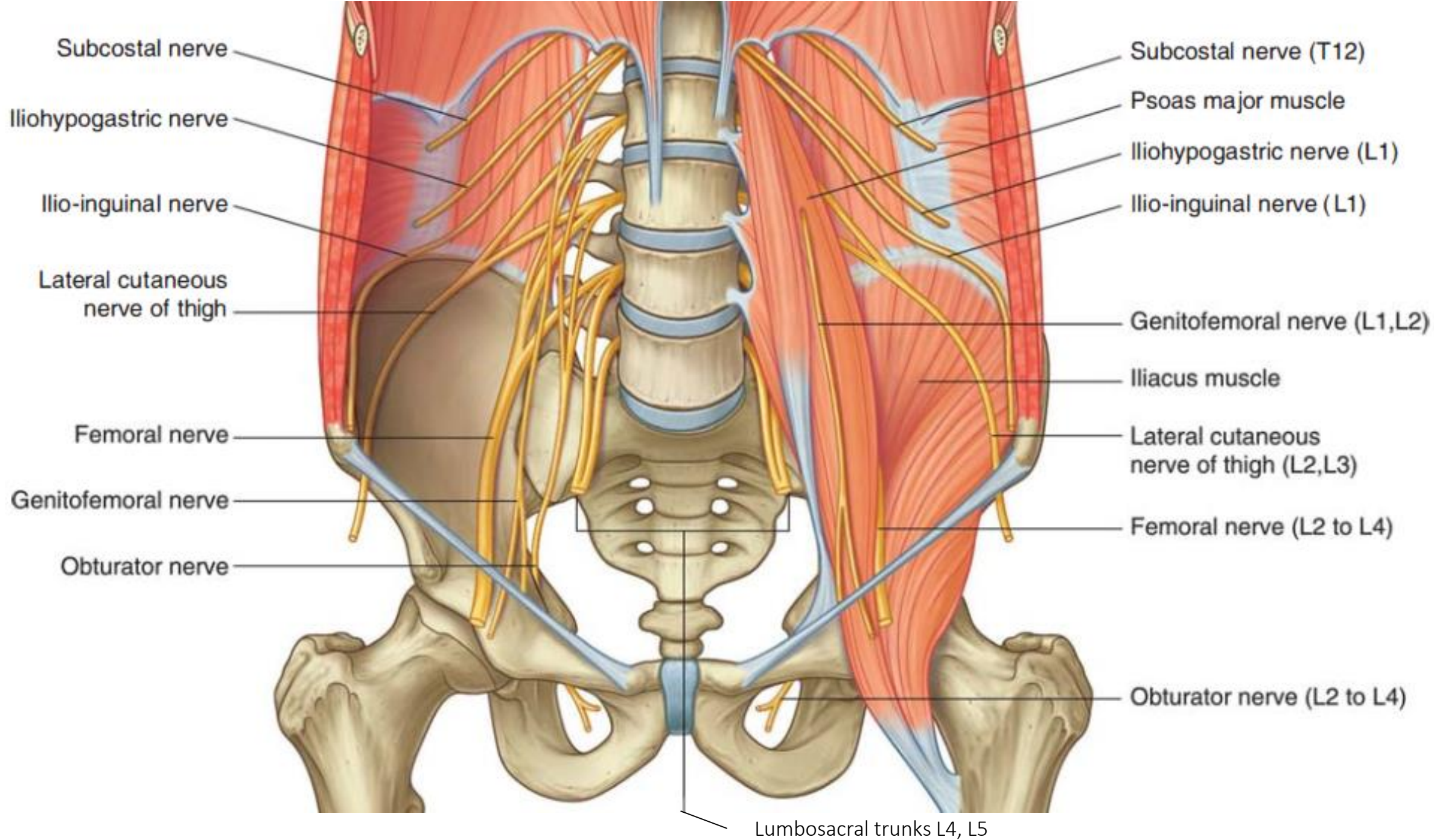


POST.



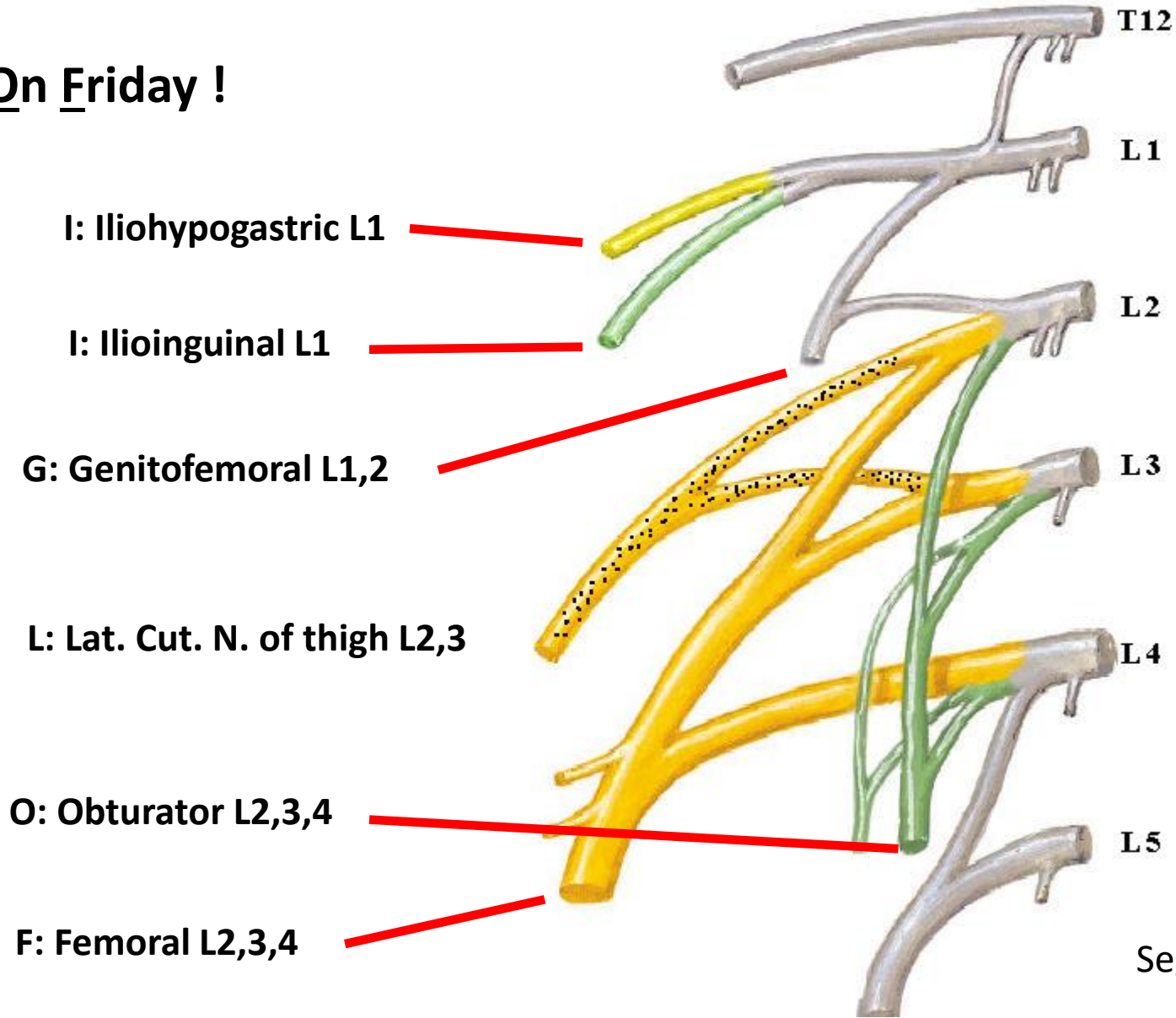
# The Lumbar Plexus







# I (Twice) Get Lemon On Friday !

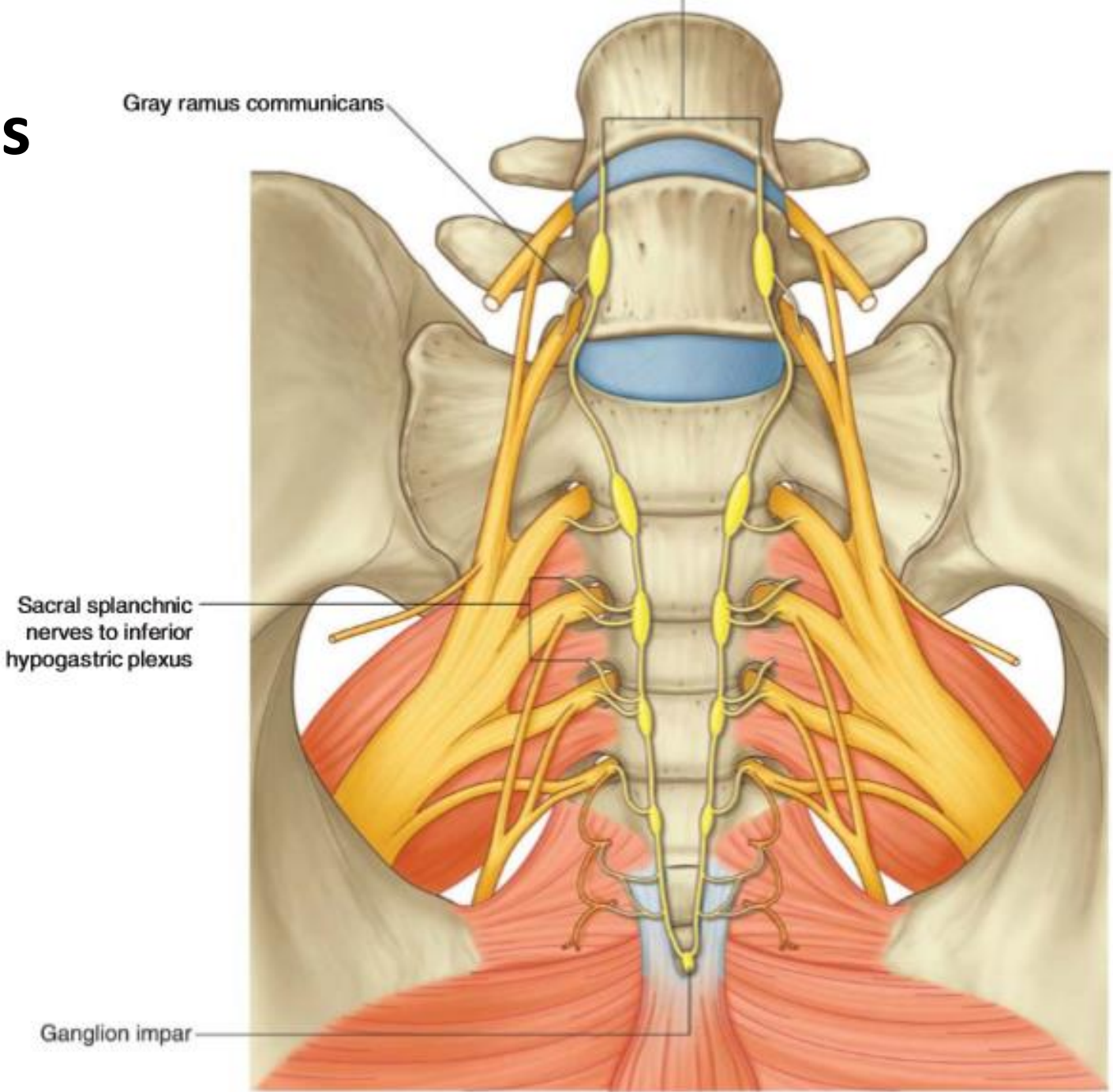


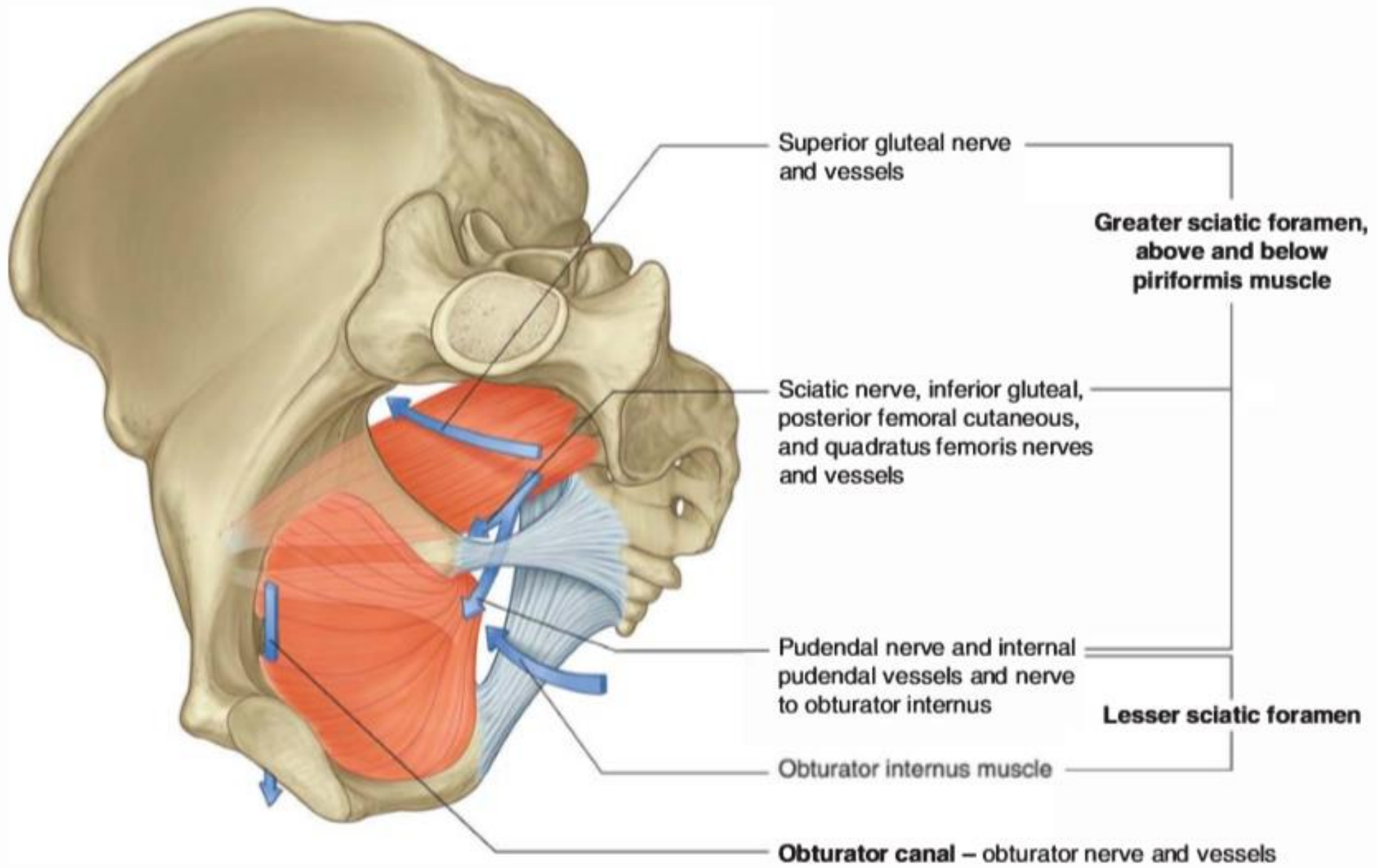
L2 - L3 → Psoas major

L1 - L2 - L3 - L4 → Quadratus lumborum

Segmental muscular brs

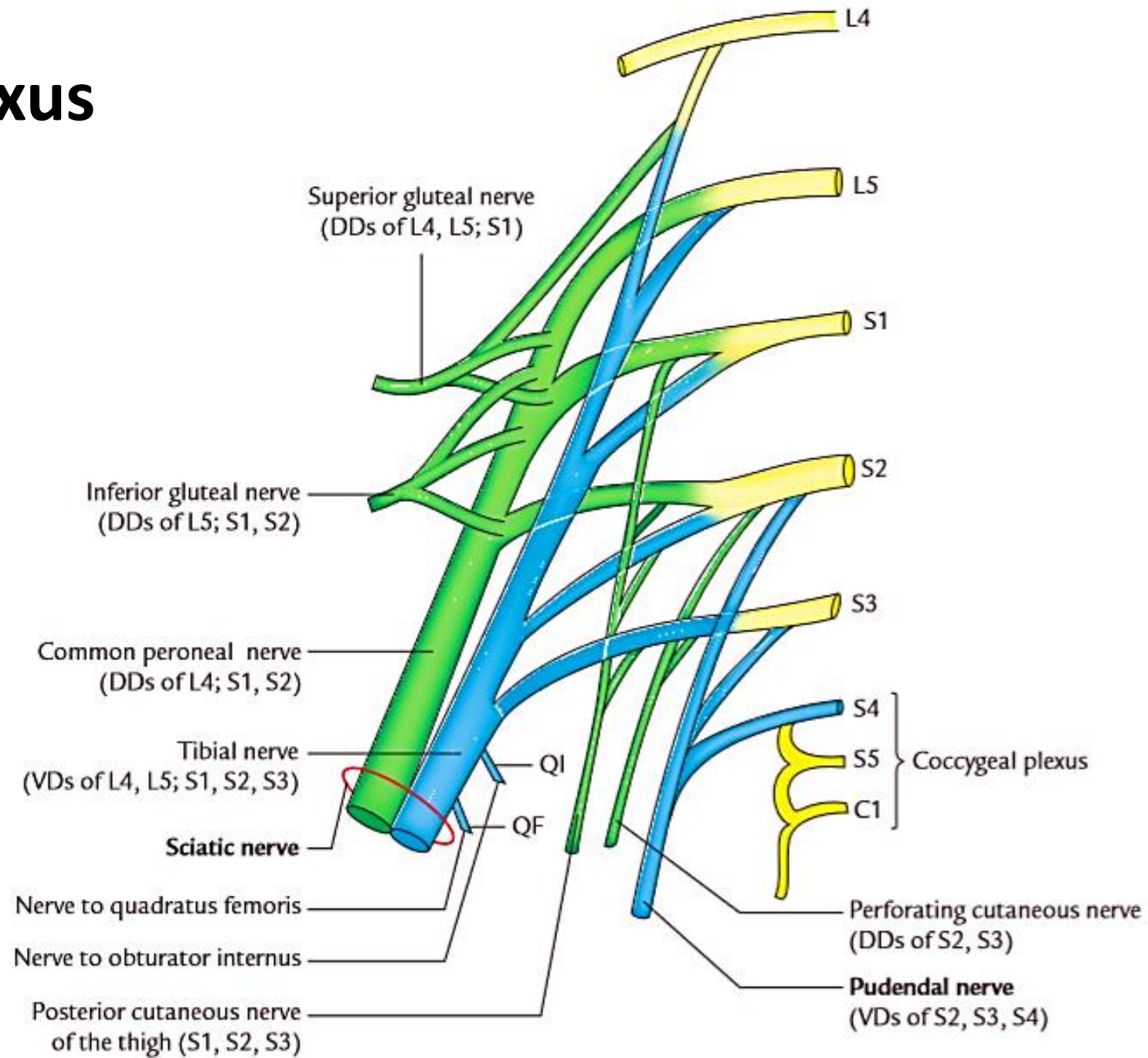
# The sacral plexus





# The sacral plexus

- Ventral branches
- Dorsal branches



S1, S2 → Segmental branches to Piriformis

# Sciatic nerve L4, L5, S1, S2, S3

Tibial part L4, L5, S1, S2, S3 (ventral)

Common peroneal part L4, L5, S1, S2 (dorsal)

