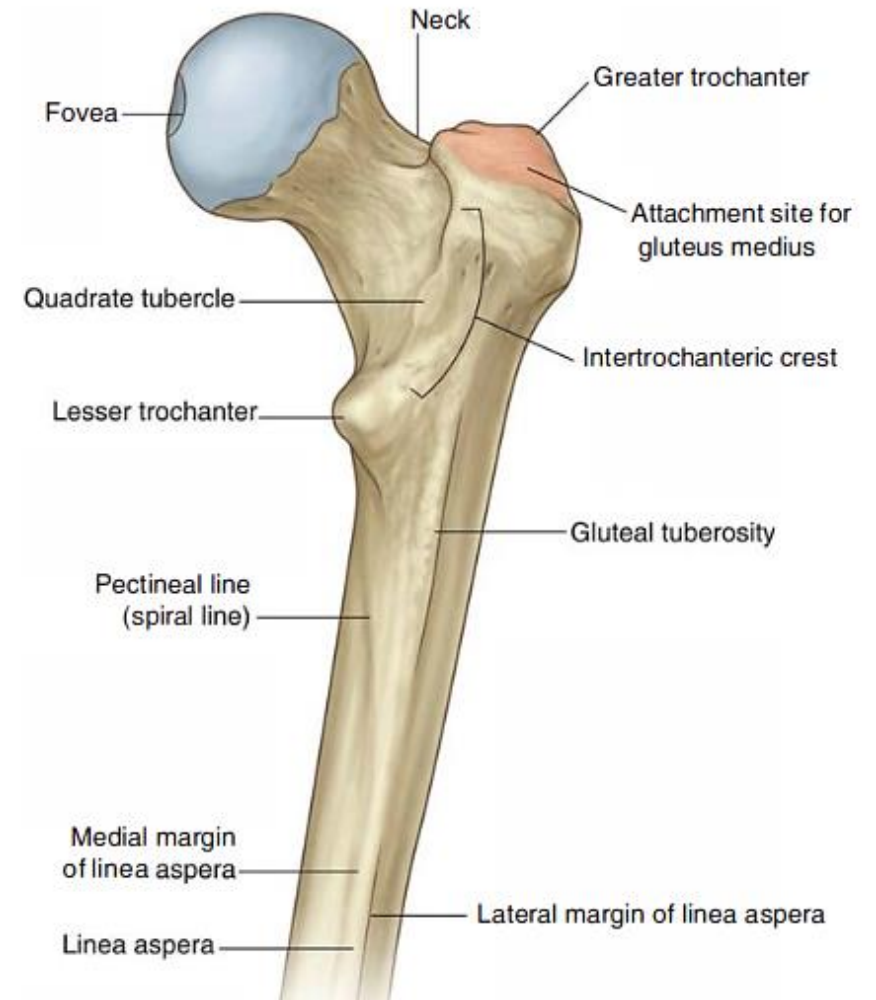
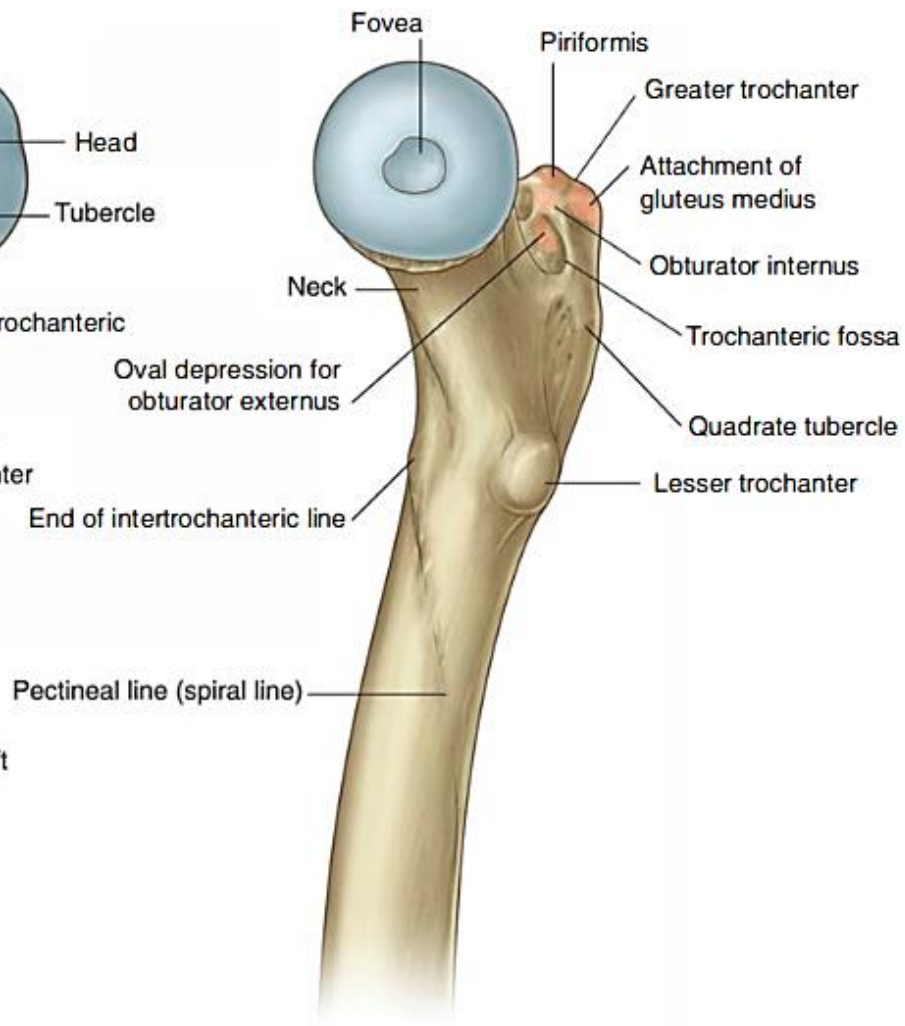
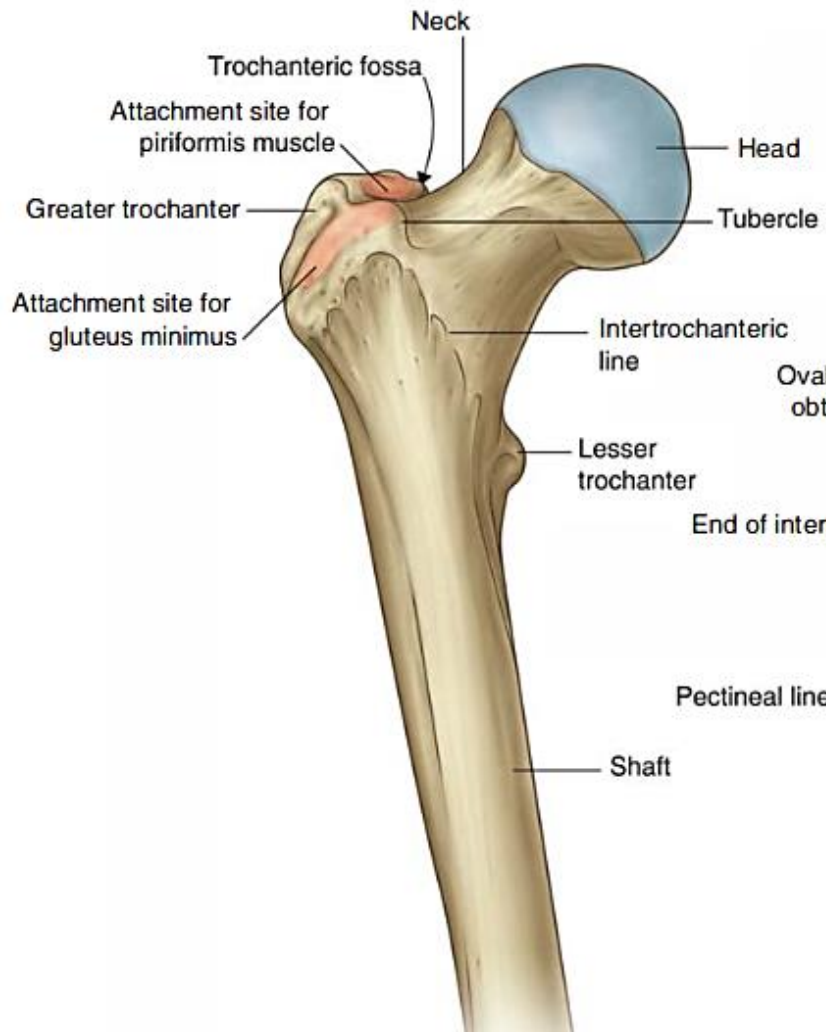


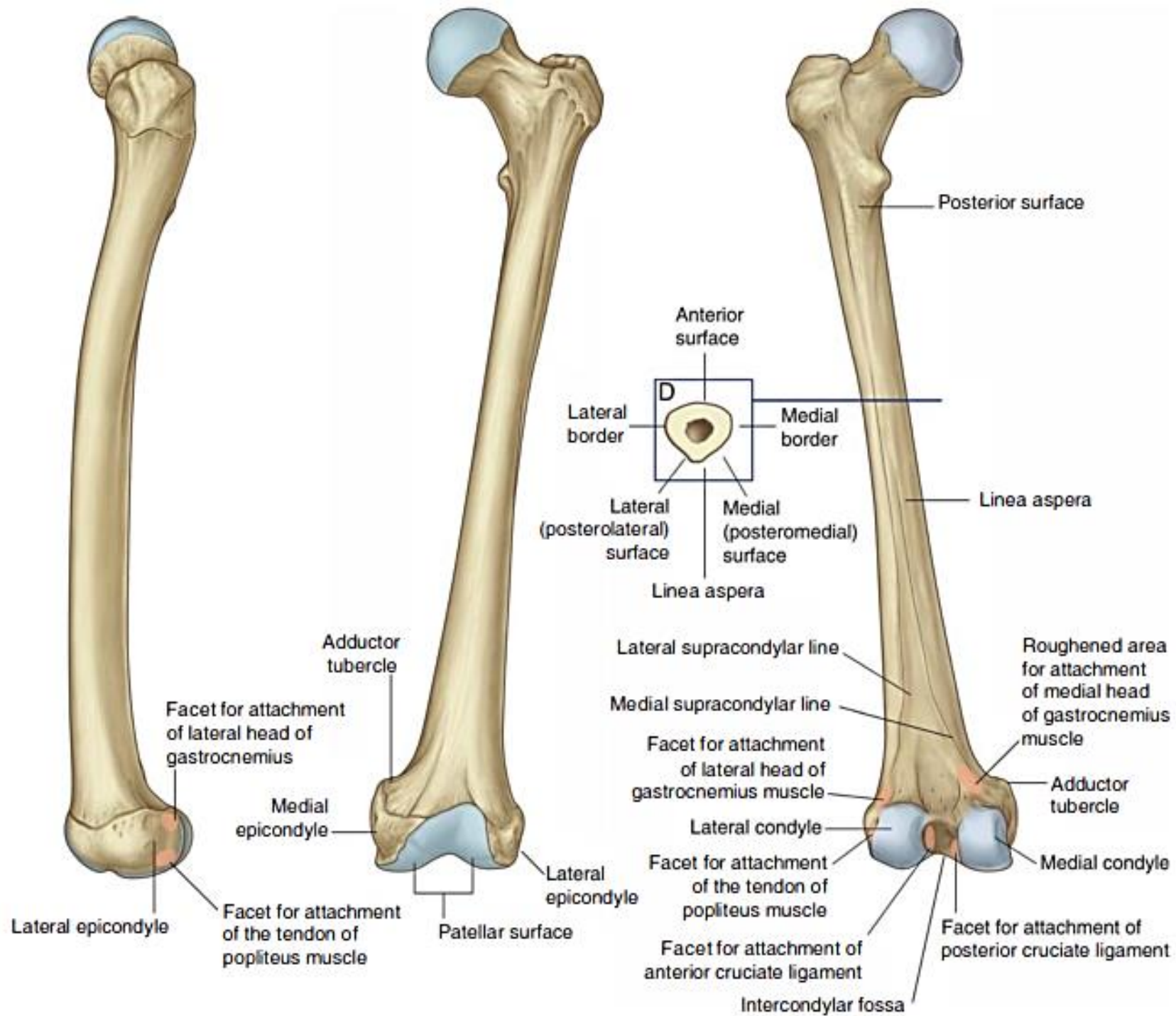
Anterior & medial compartments of the thigh

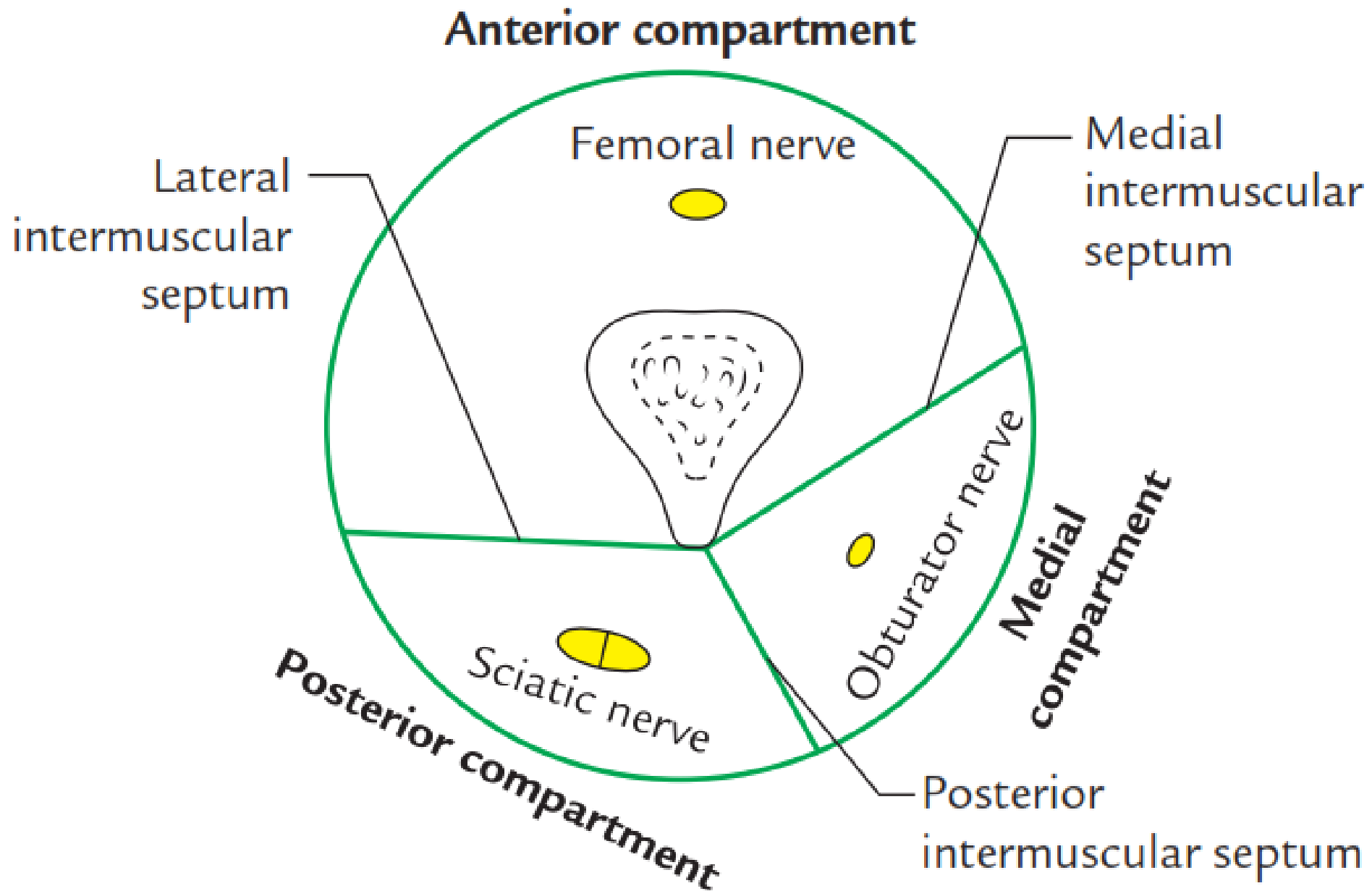


Lecture objectives

- Identify the muscles of the anterior & medial compartments of the thigh
- Study boundaries & contents of the femoral triangle (femoral vessels & nerve)
- Identify the neurovascular distribution of the medial compartment







Muscles of the anterior (extensor compartment)

1. Sartorius

2. Iliacus

3. Psoas major

4. Quadriceps femoris

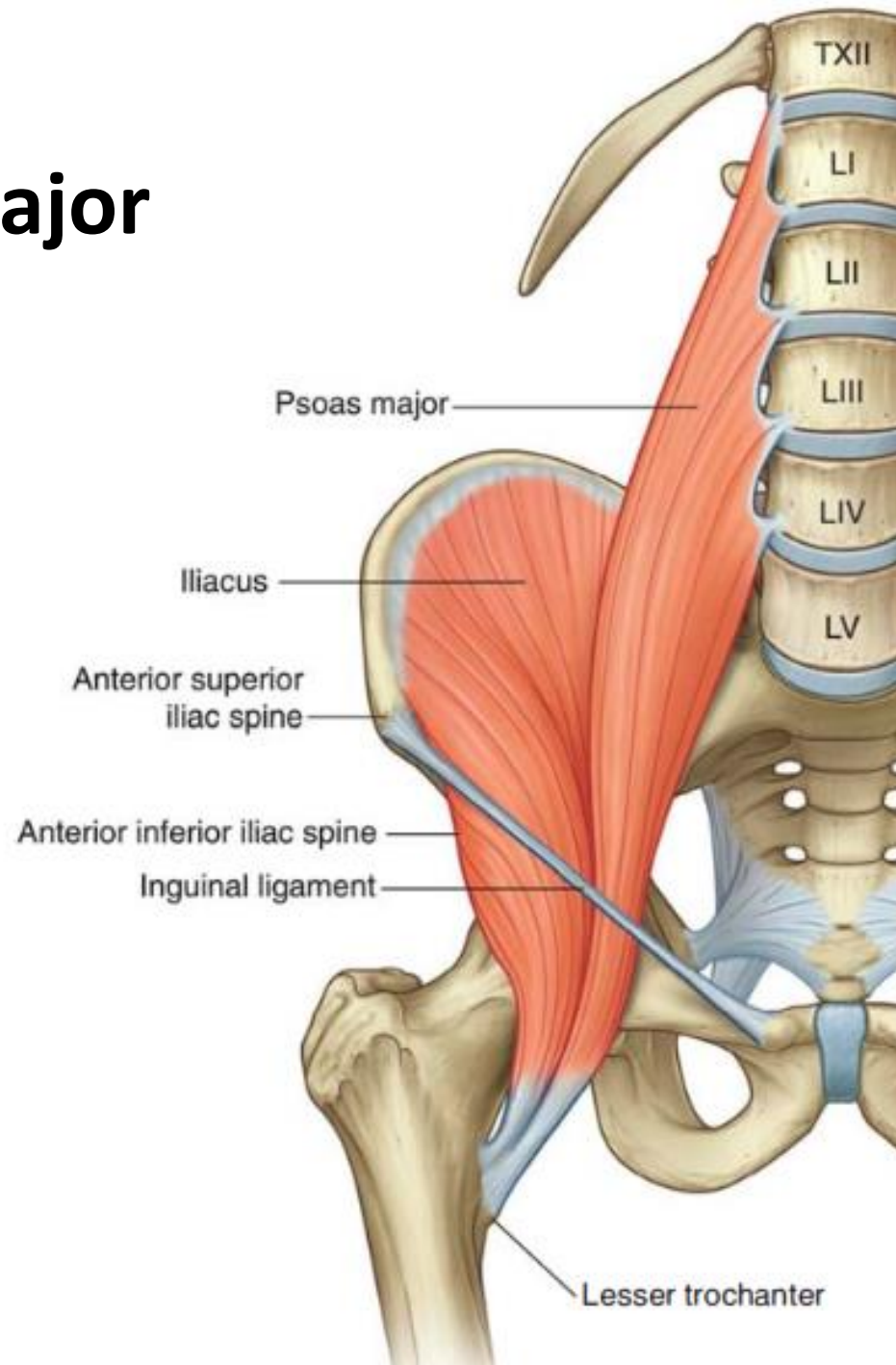
```
graph LR; A[Rectus femoris  
Vastus lateralis  
Vastus intermedius  
Vastus medialis] --> B[Quadriceps f. tendon]; B --> C[Patella]; C --> D[Patellar ligament]
```

Rectus femoris
Vastus lateralis
Vastus intermedius
Vastus medialis

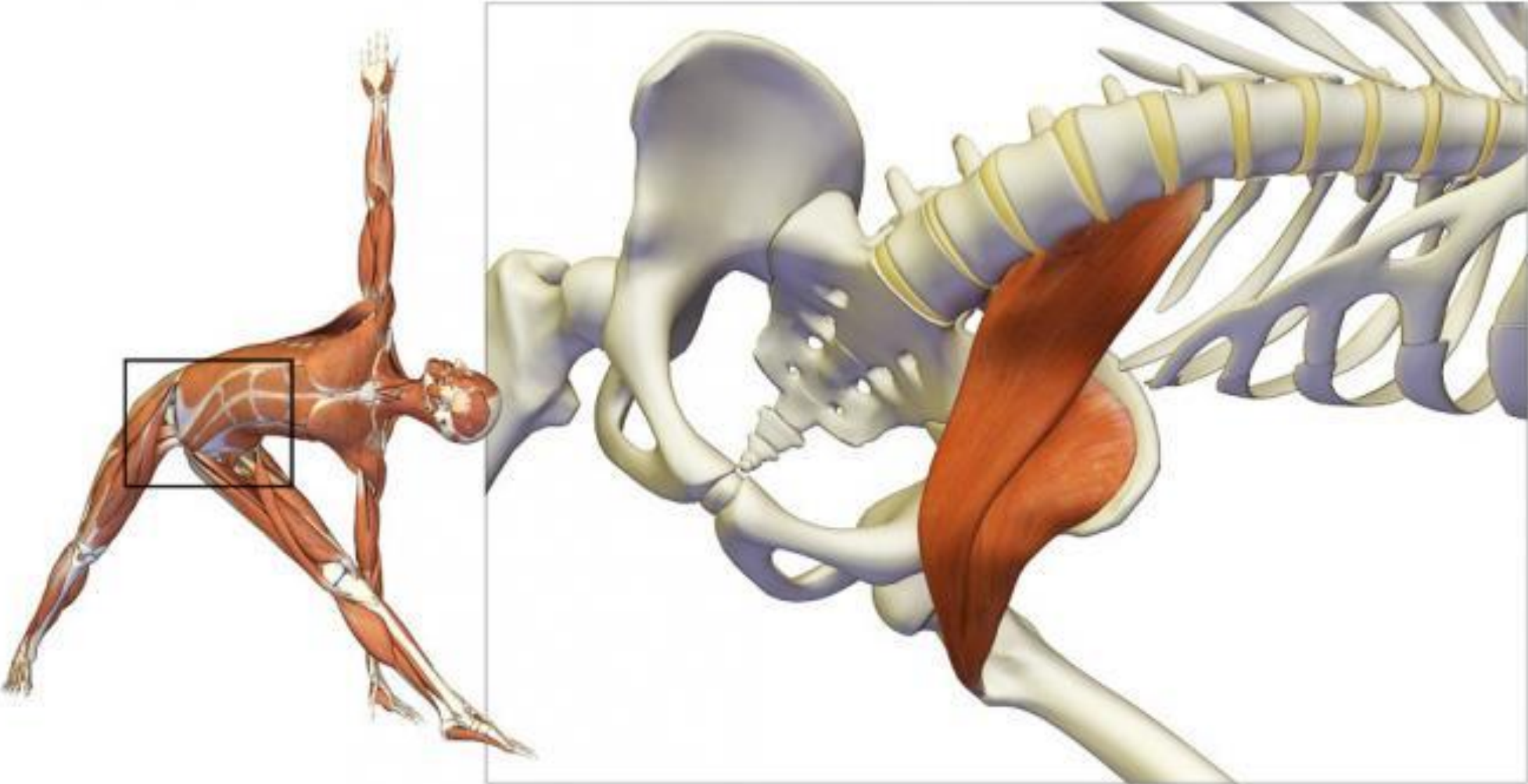
Quadriceps f. tendon → Patella → Patellar ligament

5. Articularis genus

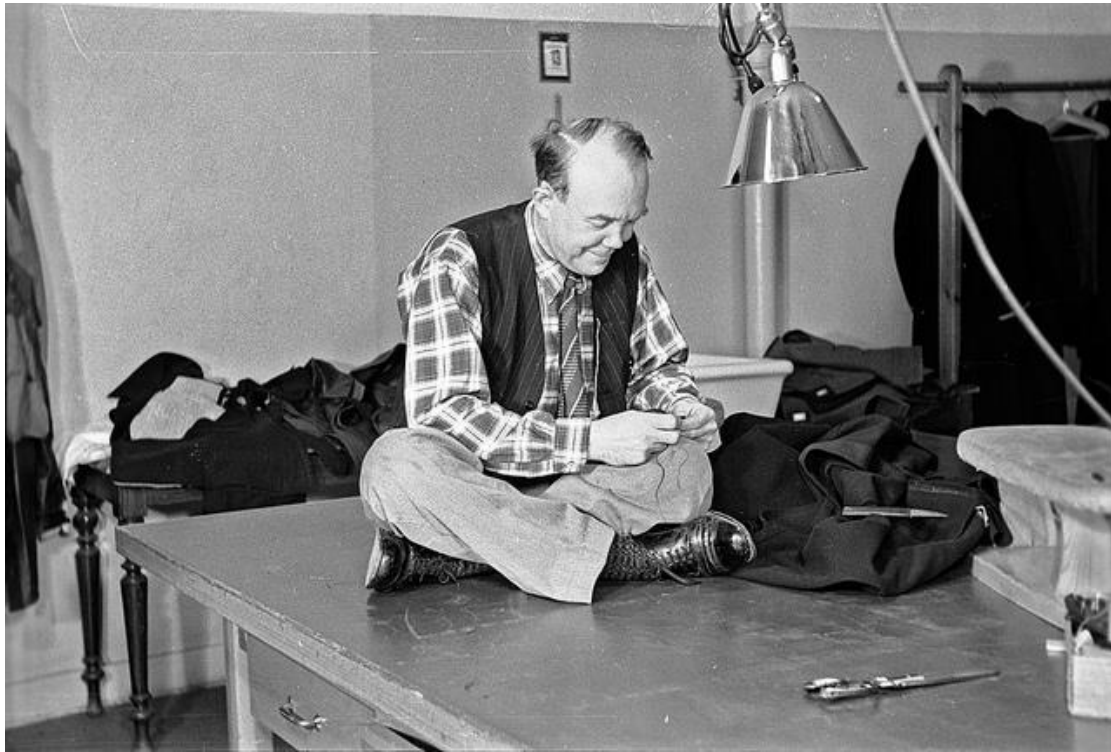
Iliacus & psoas major



The muscle of the soul

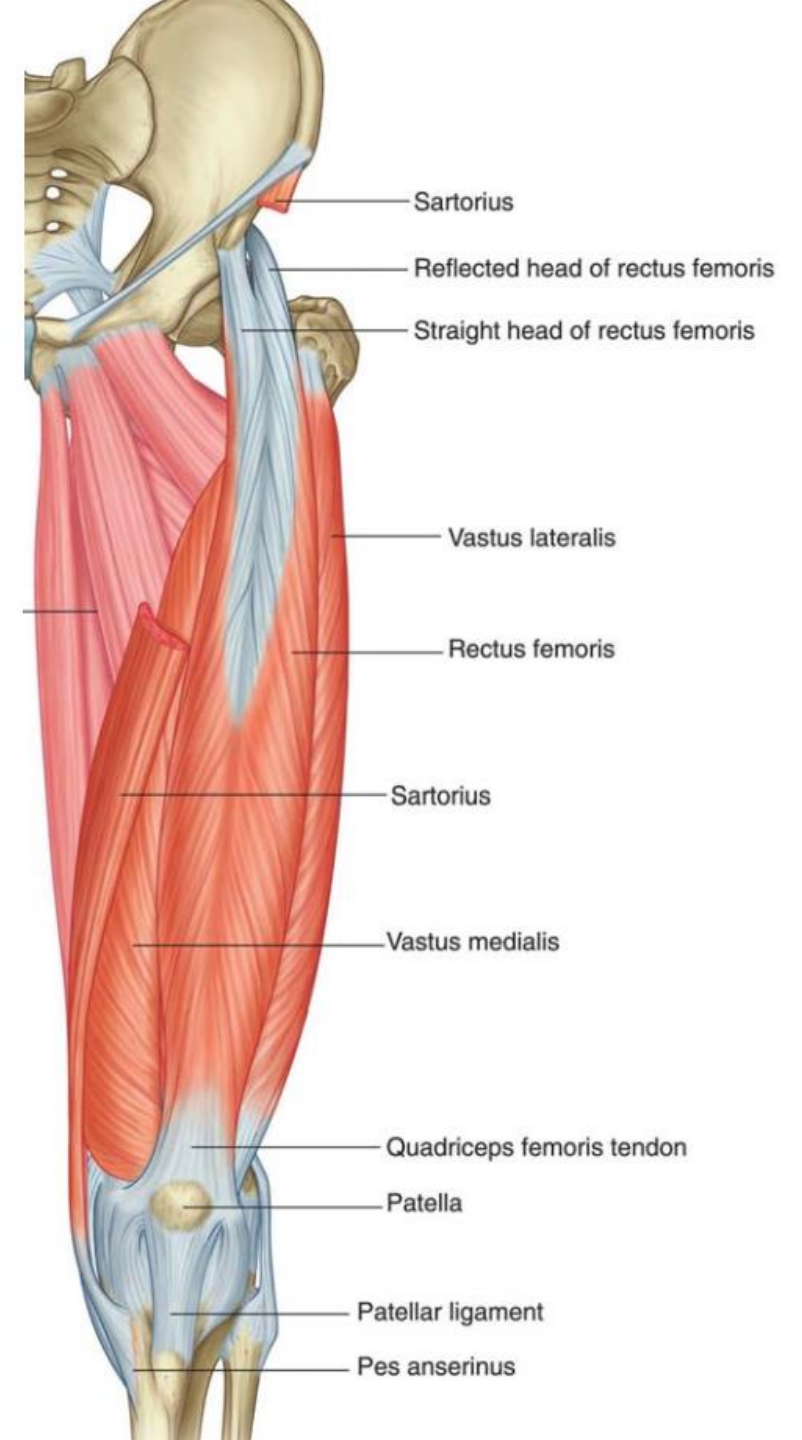


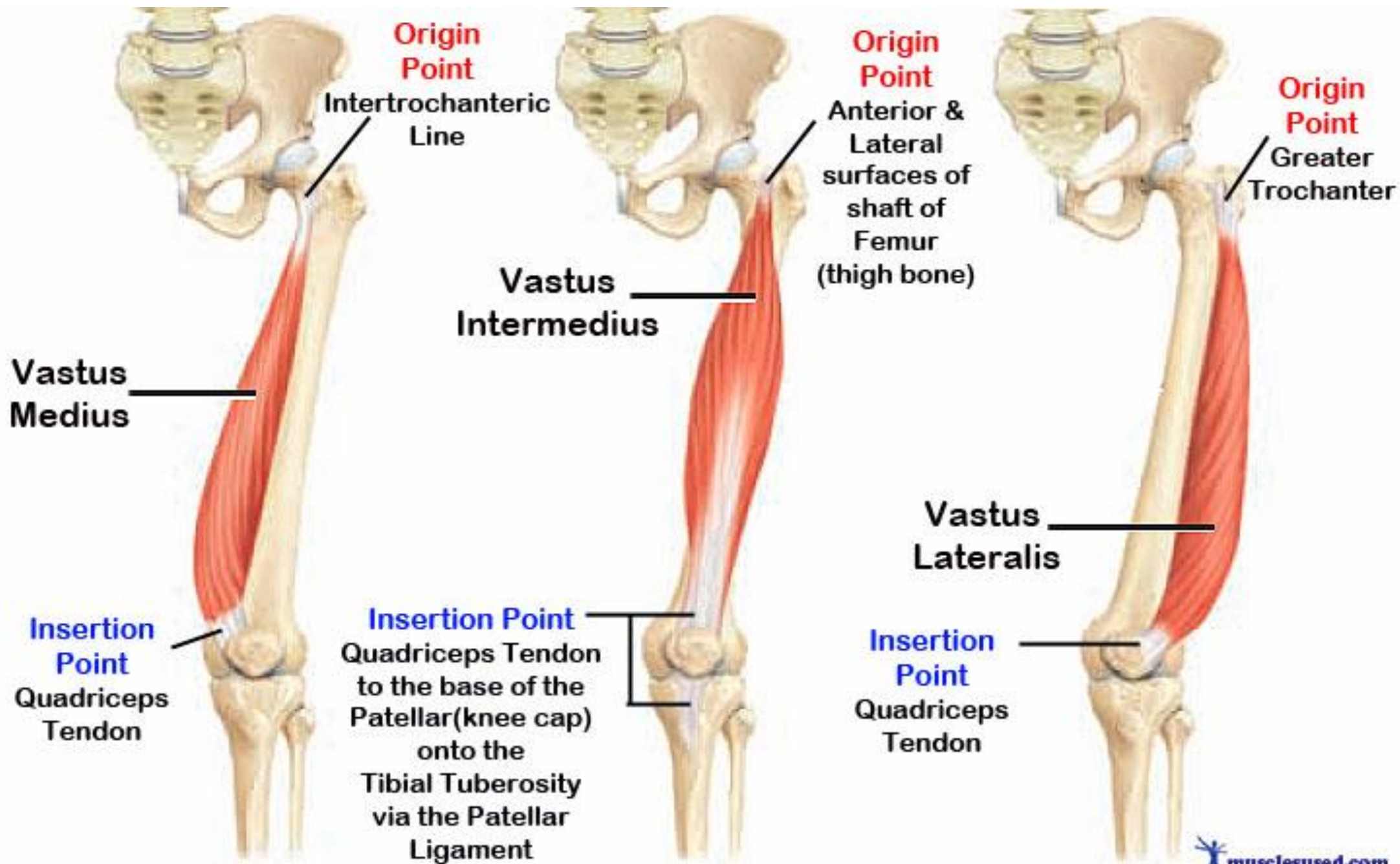
Quadriceps femoris & Sartorius

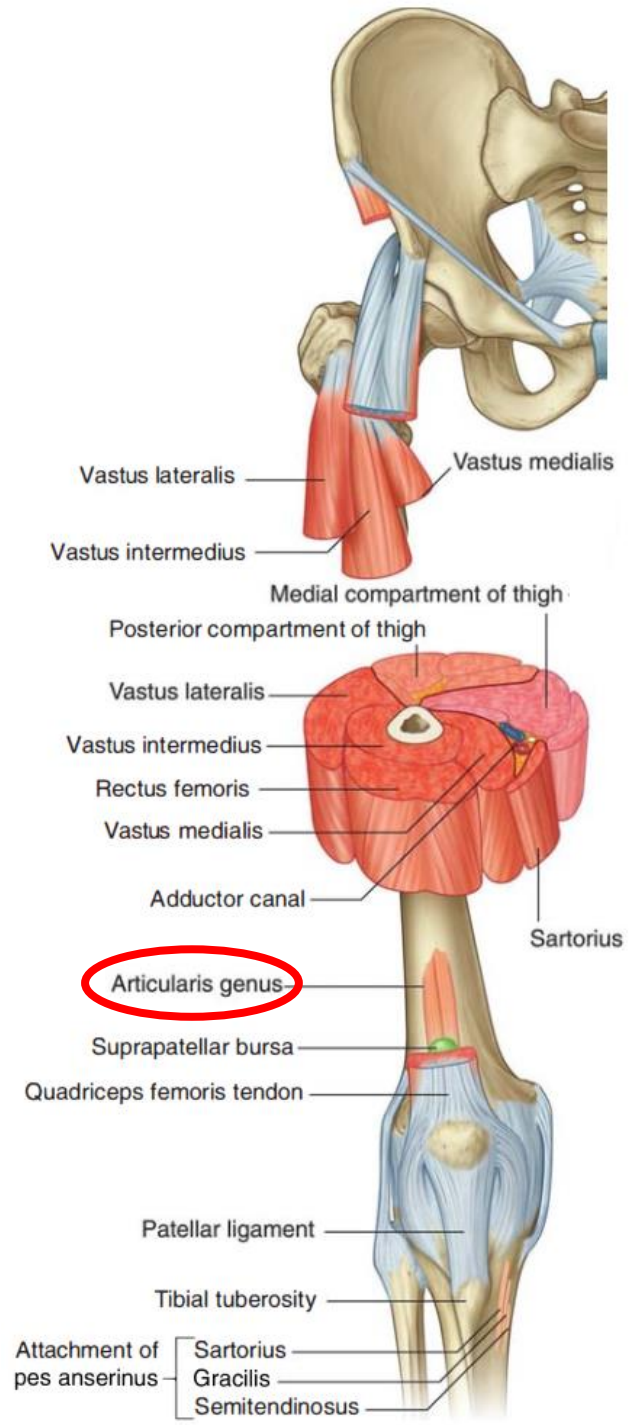
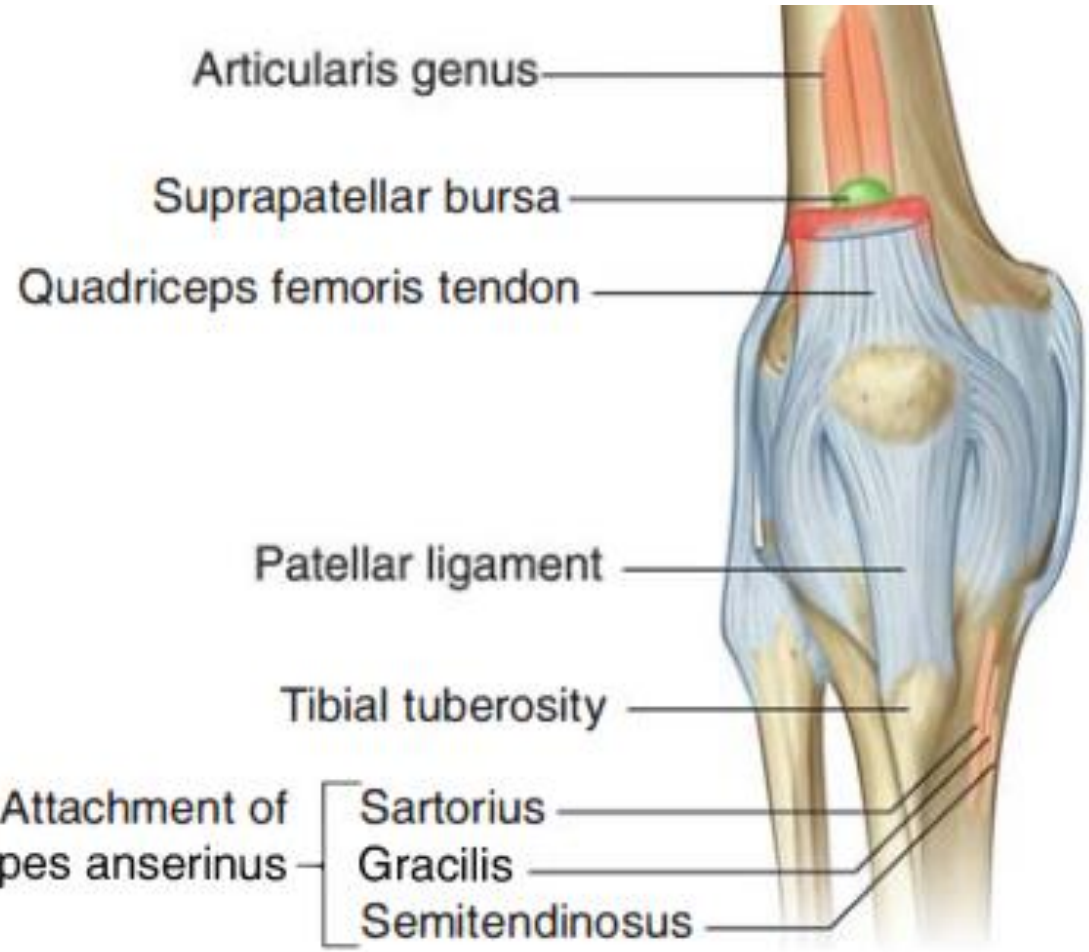


Tailer sitting

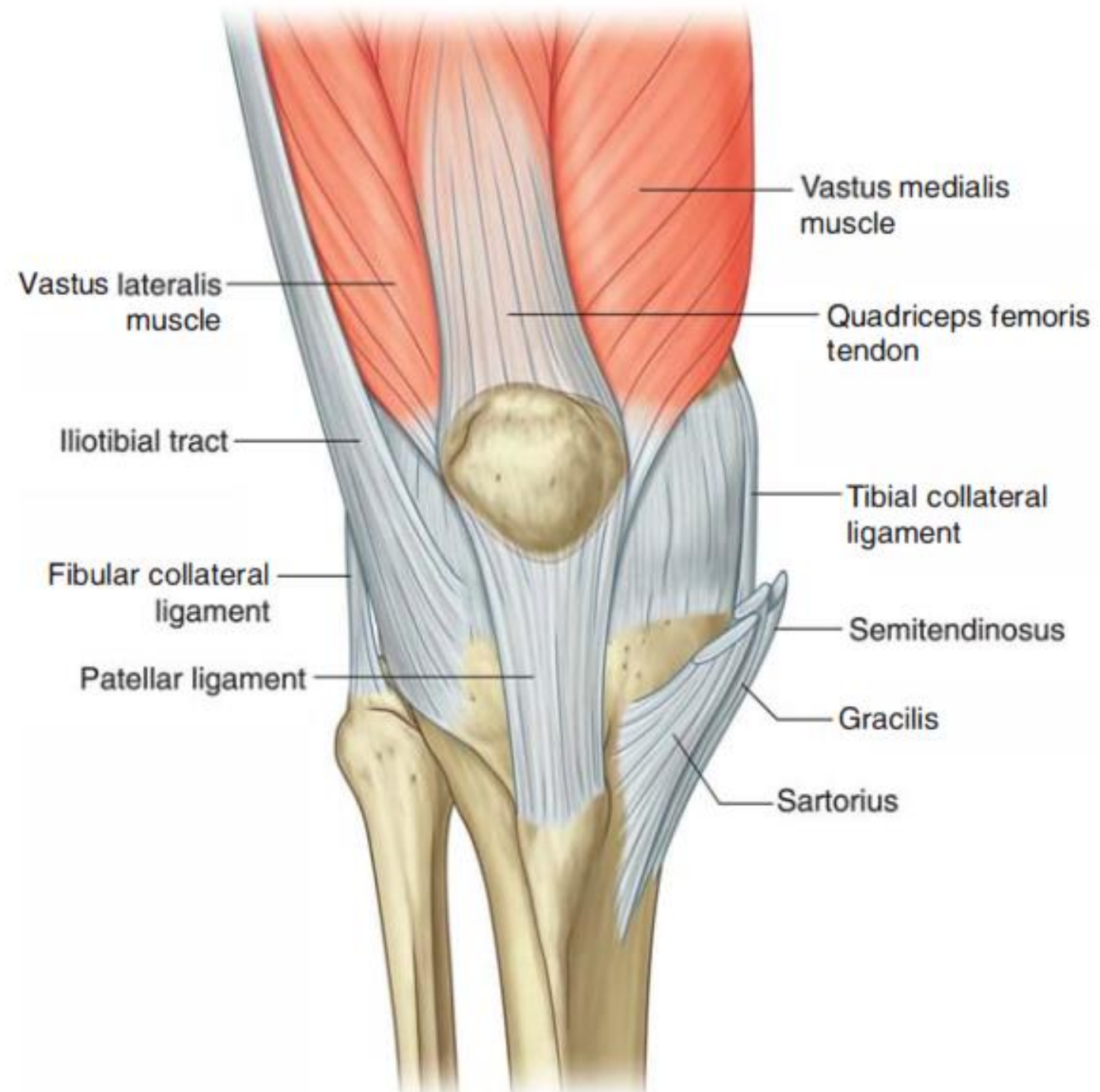
Sartorius [Latin](#) word *sartor*, tailor







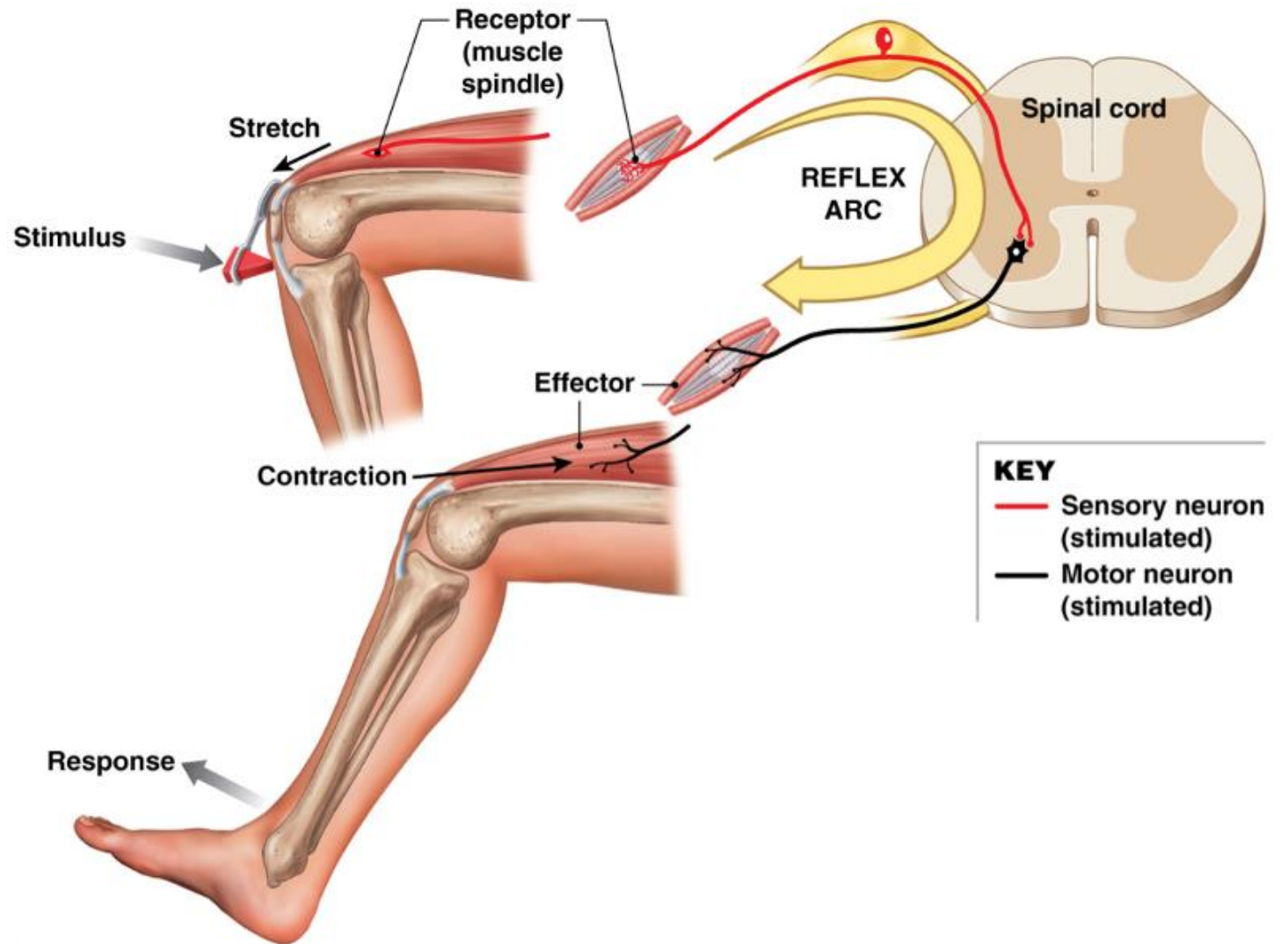
Quadriceps tendon & patellar ligament



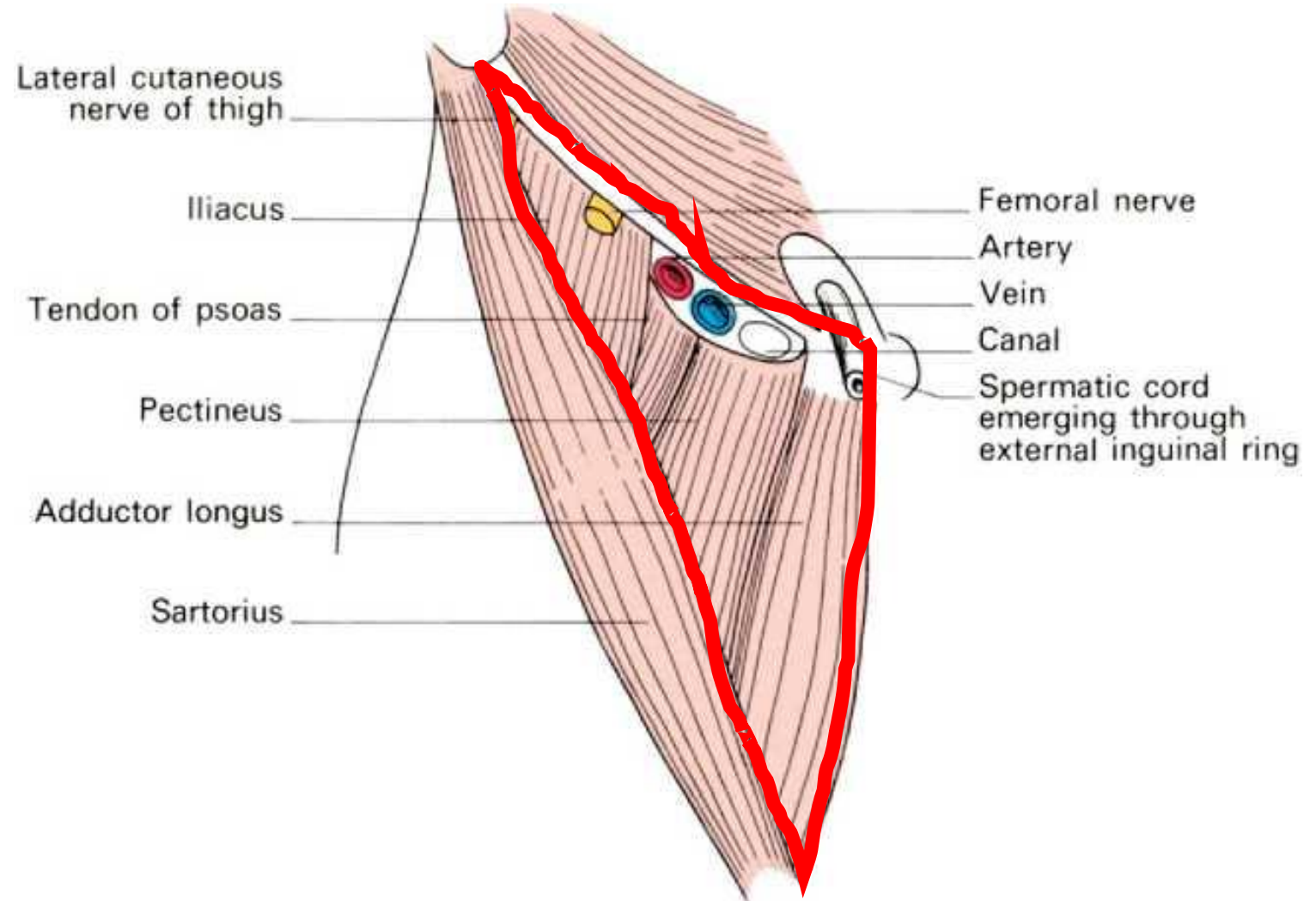
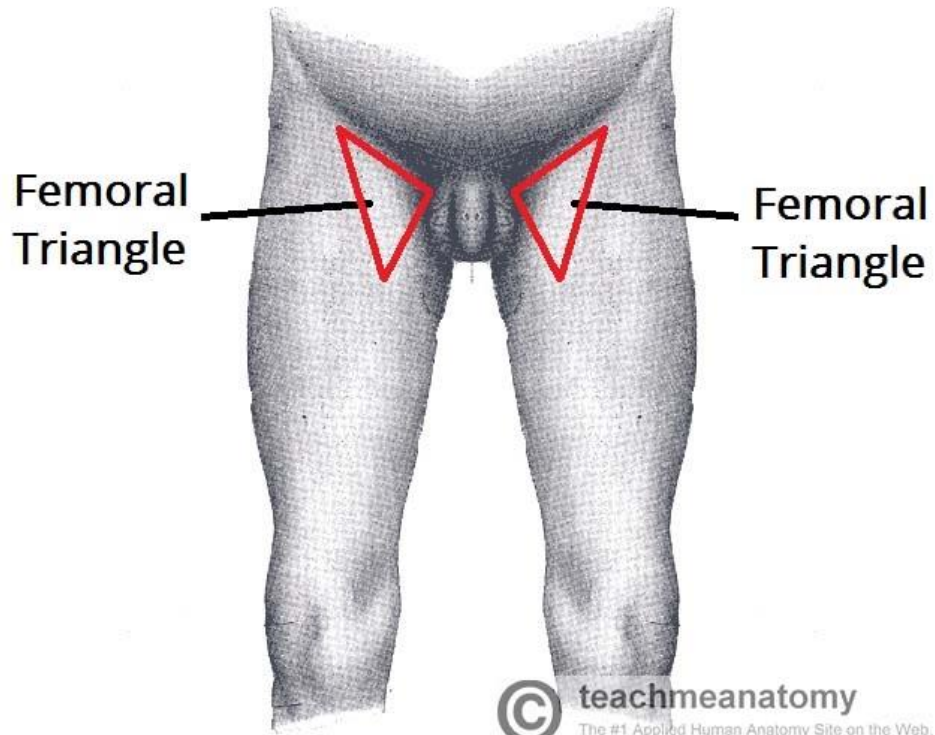


Clinical correlation

Patellar jerk L3, L4 spinal levels

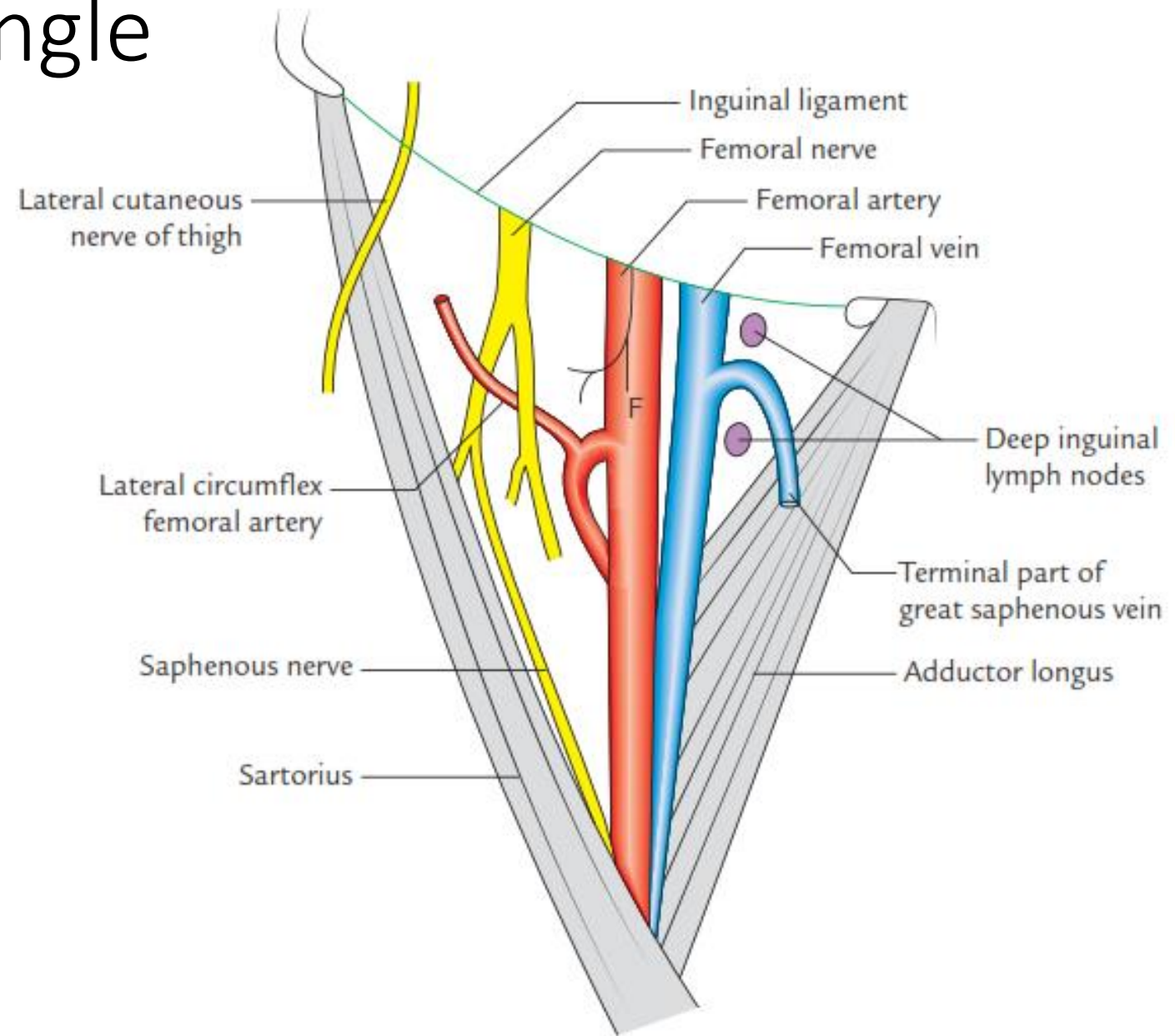


Femoral triangle

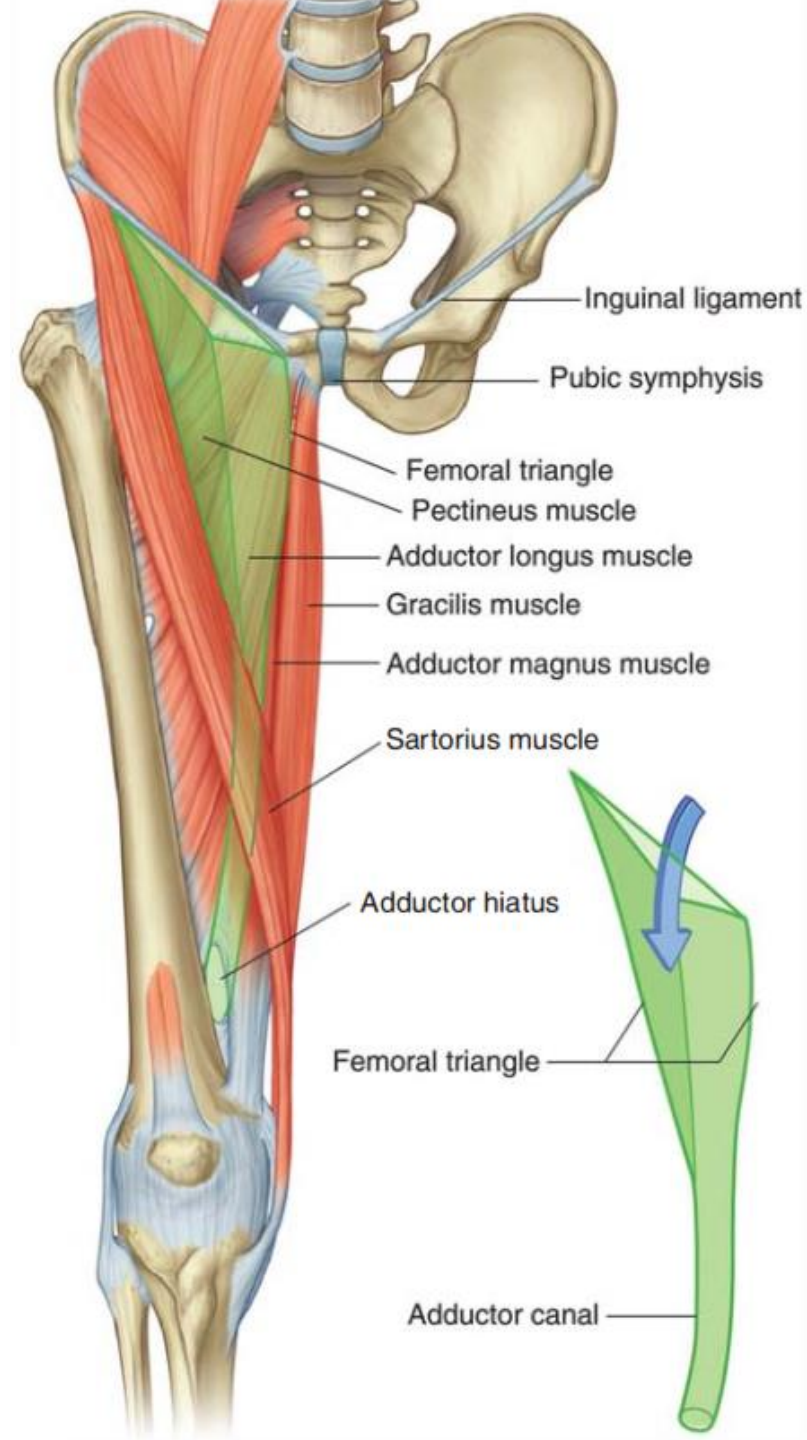
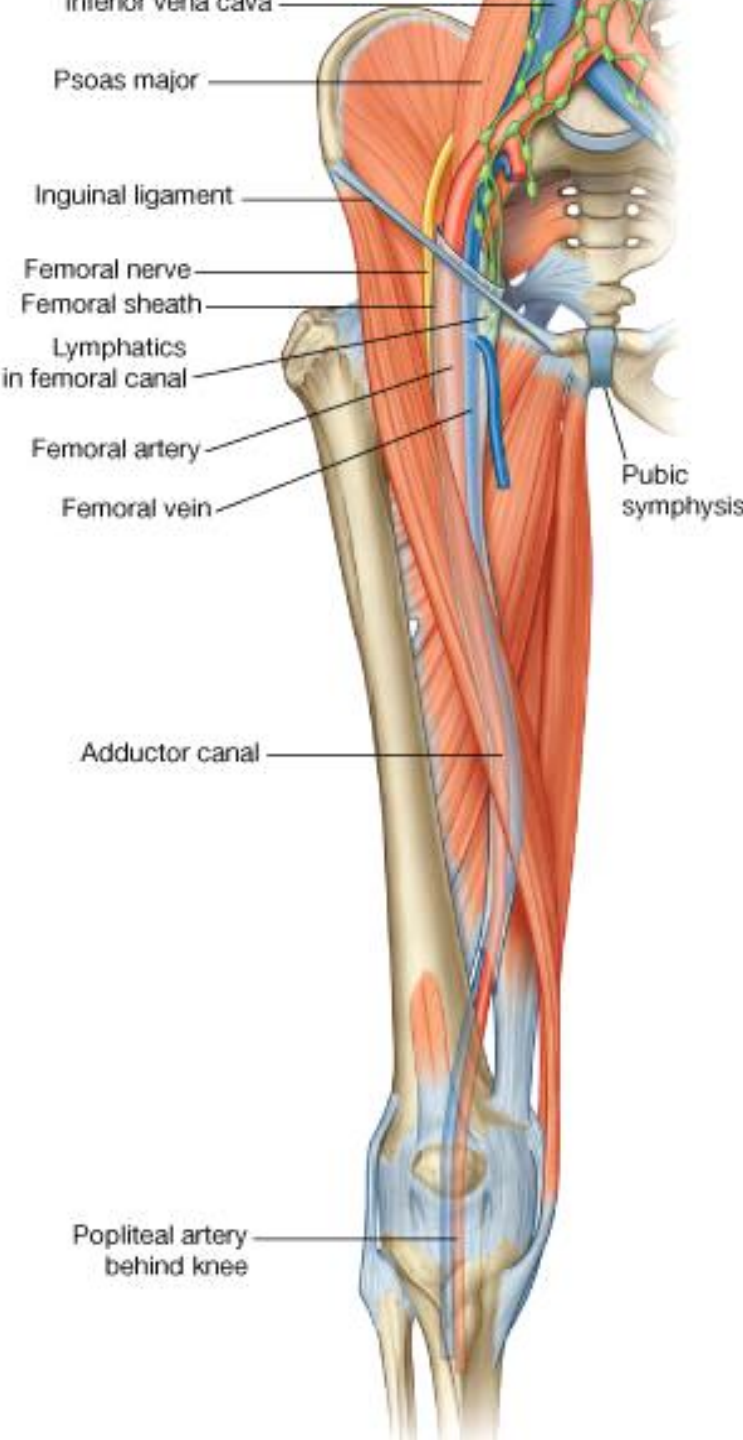


Contents of femoral triangle

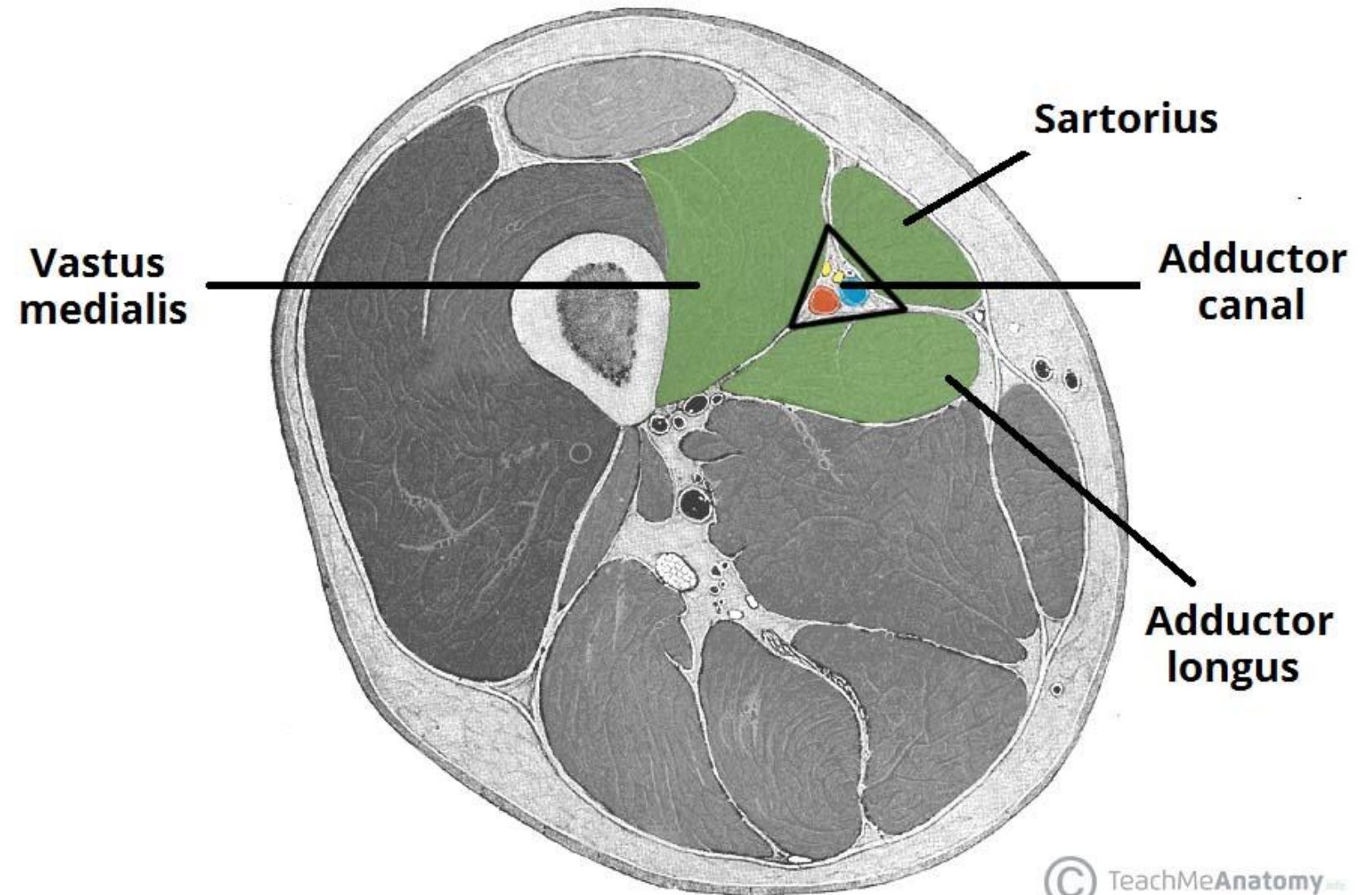
- Femoral vessels within femoral sheath
- Deep inguinal lymph nodes
- Femoral nerve
- Lateral cut. Nerve of the thigh

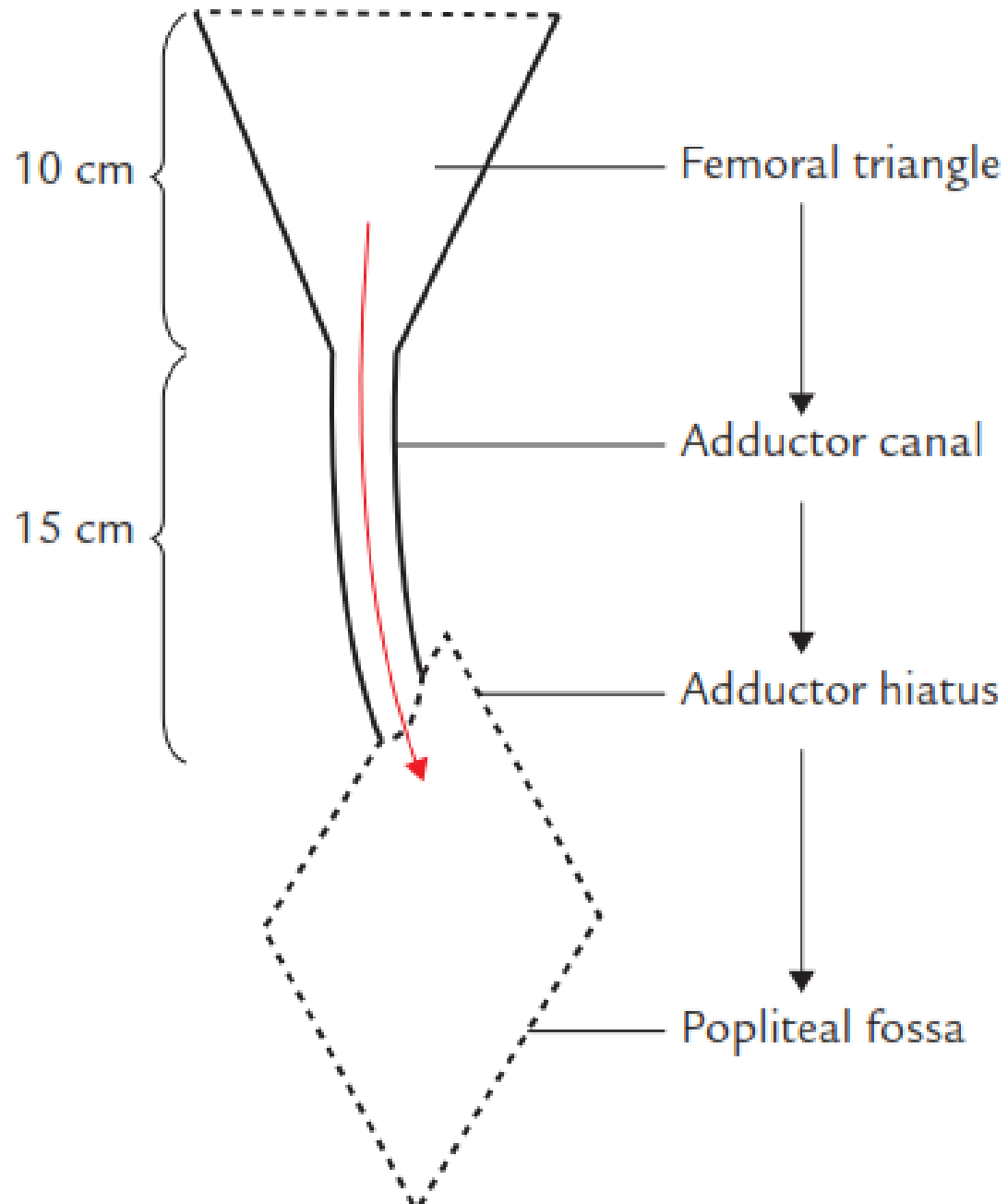


Femoral triangle & adductor canal

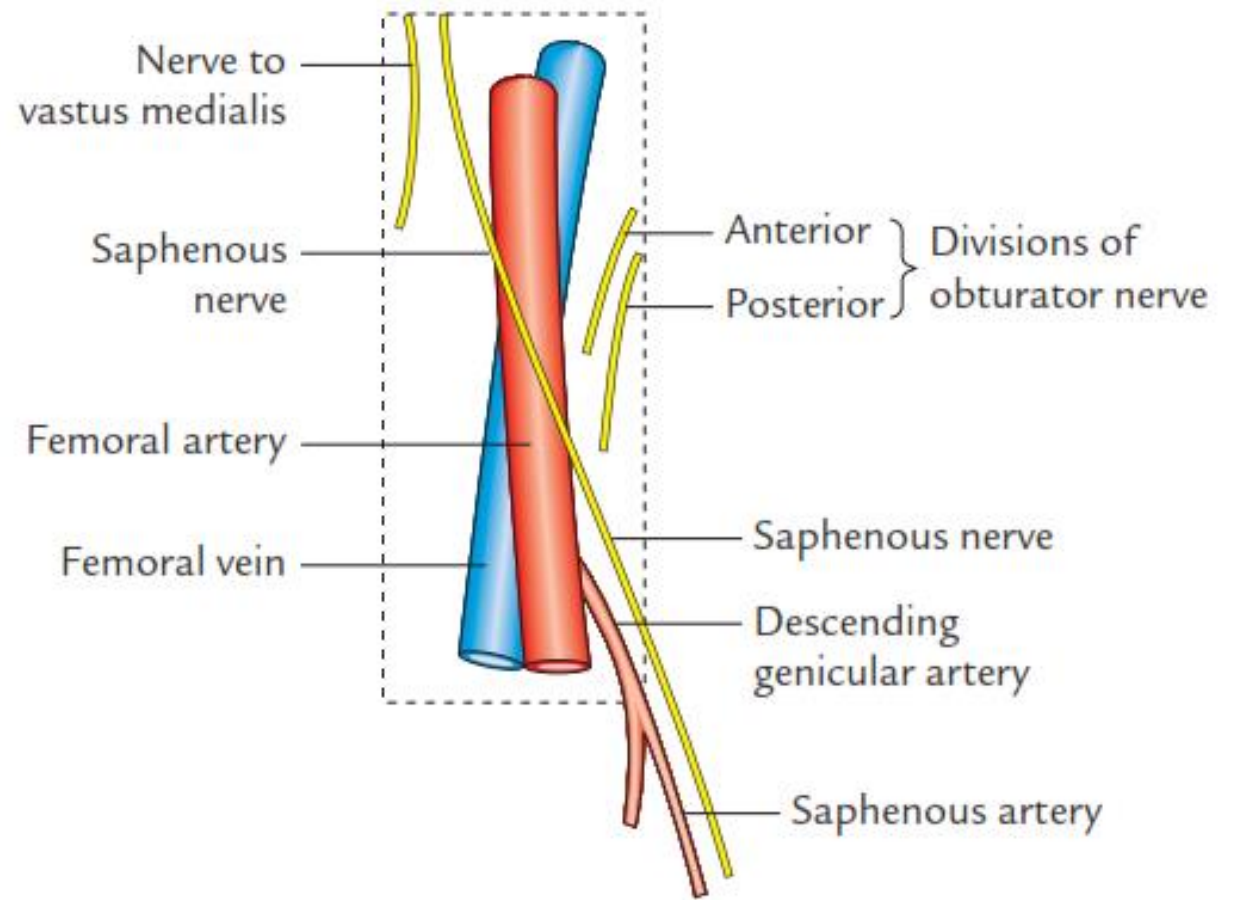


Boundaries



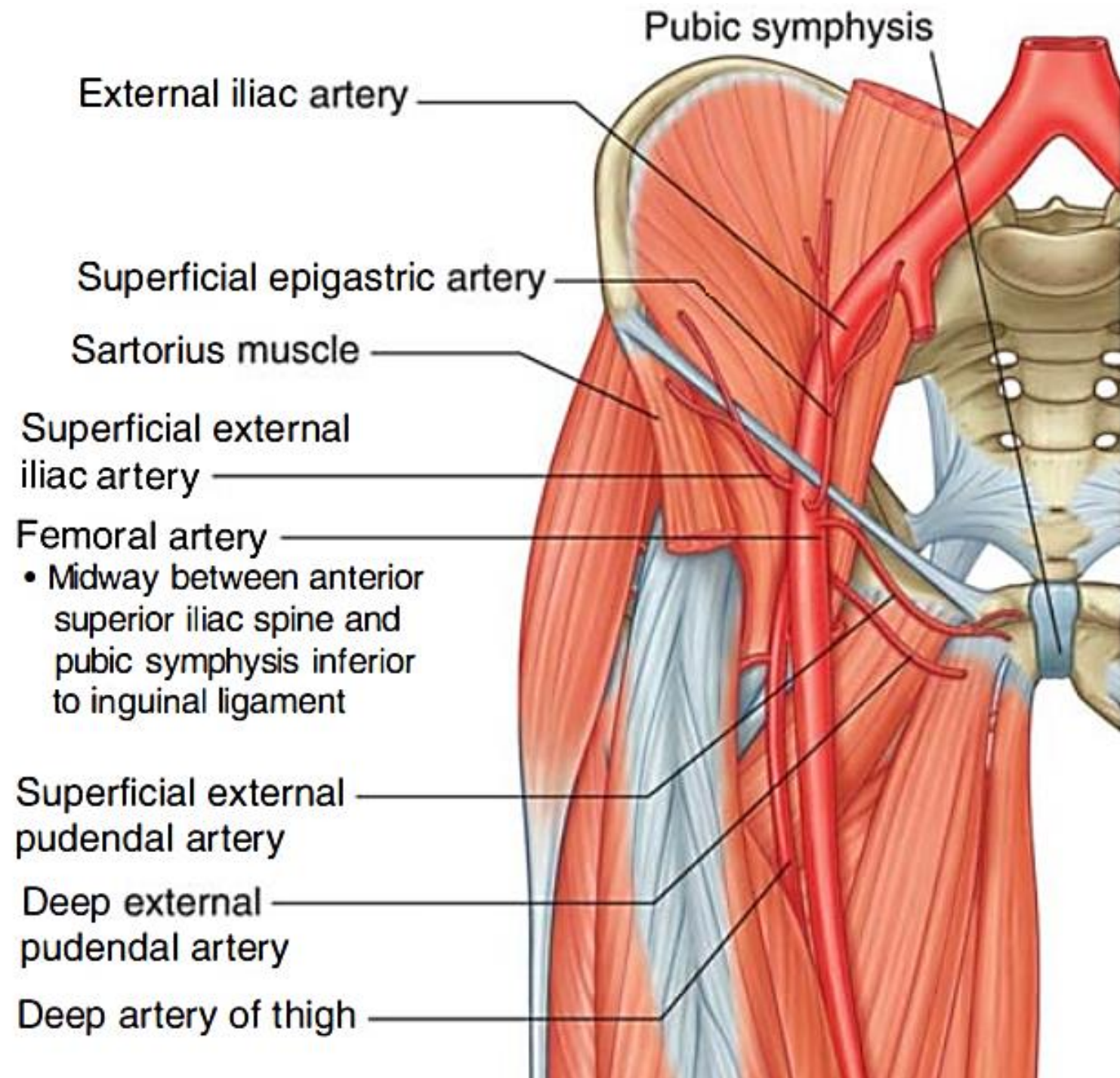


Contents of the adductor canal



Femoral artery:

1. Superficial ext. iliac a.
2. Superficial epigastric a.
3. Superficial ext. pudendal a.
4. Deep ext. pudendal a.
5. Profunda femoris a.
6. Descending genicular a. (→ saphenous a.)



MID-INGUINAL POINT

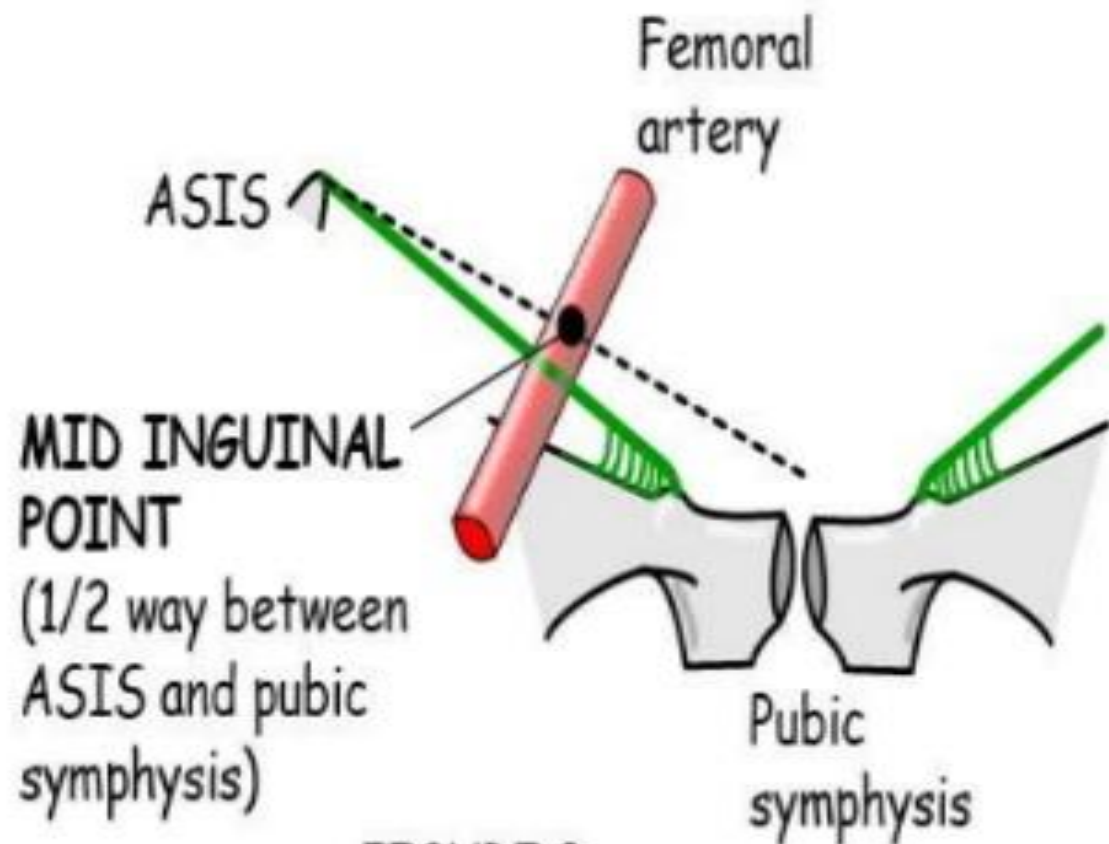
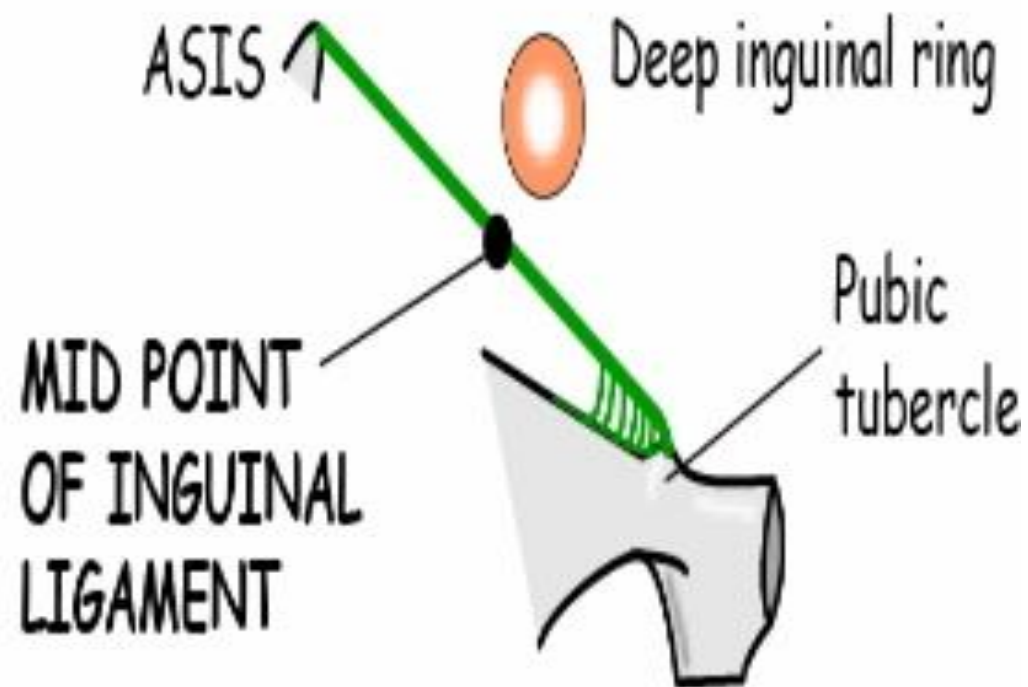
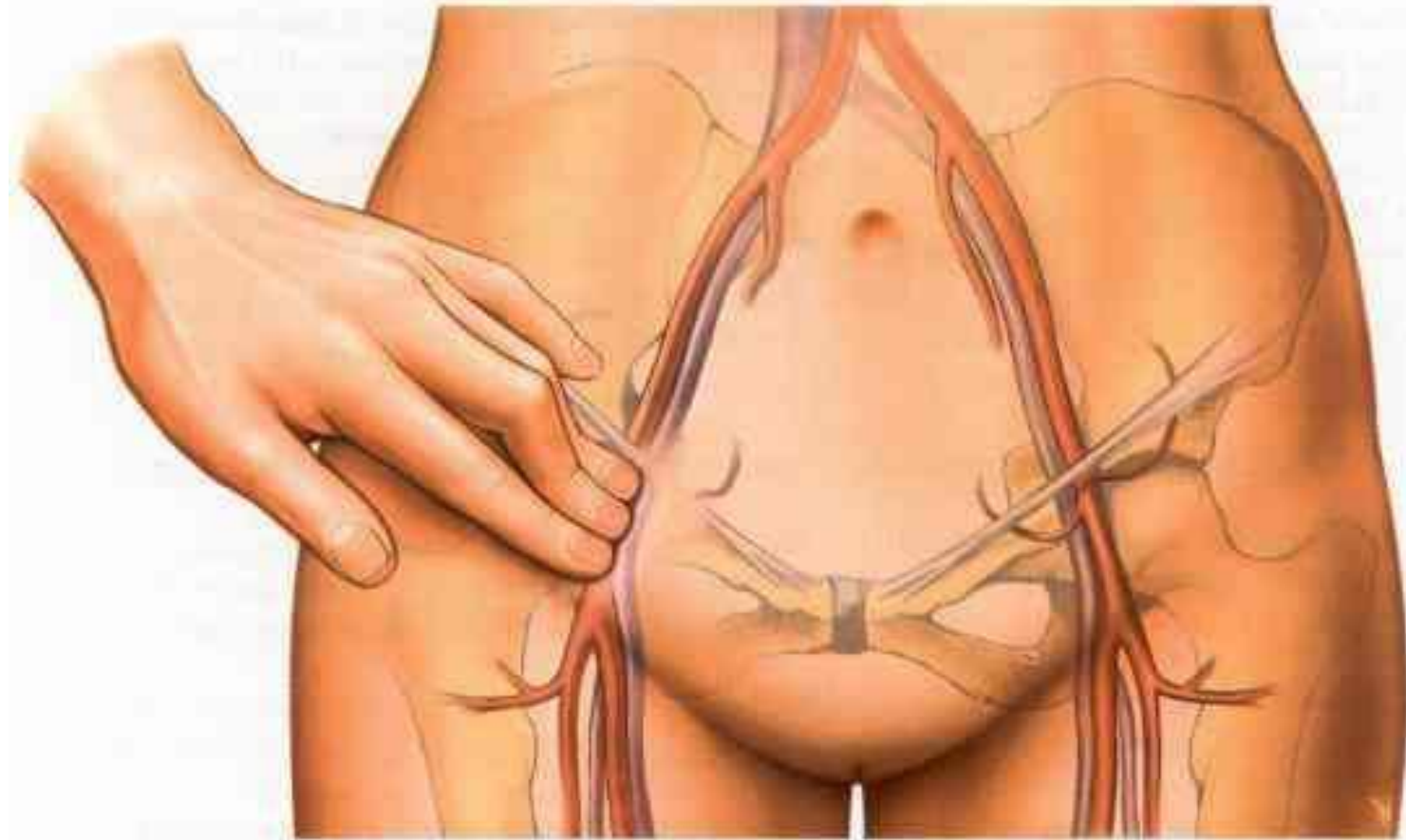
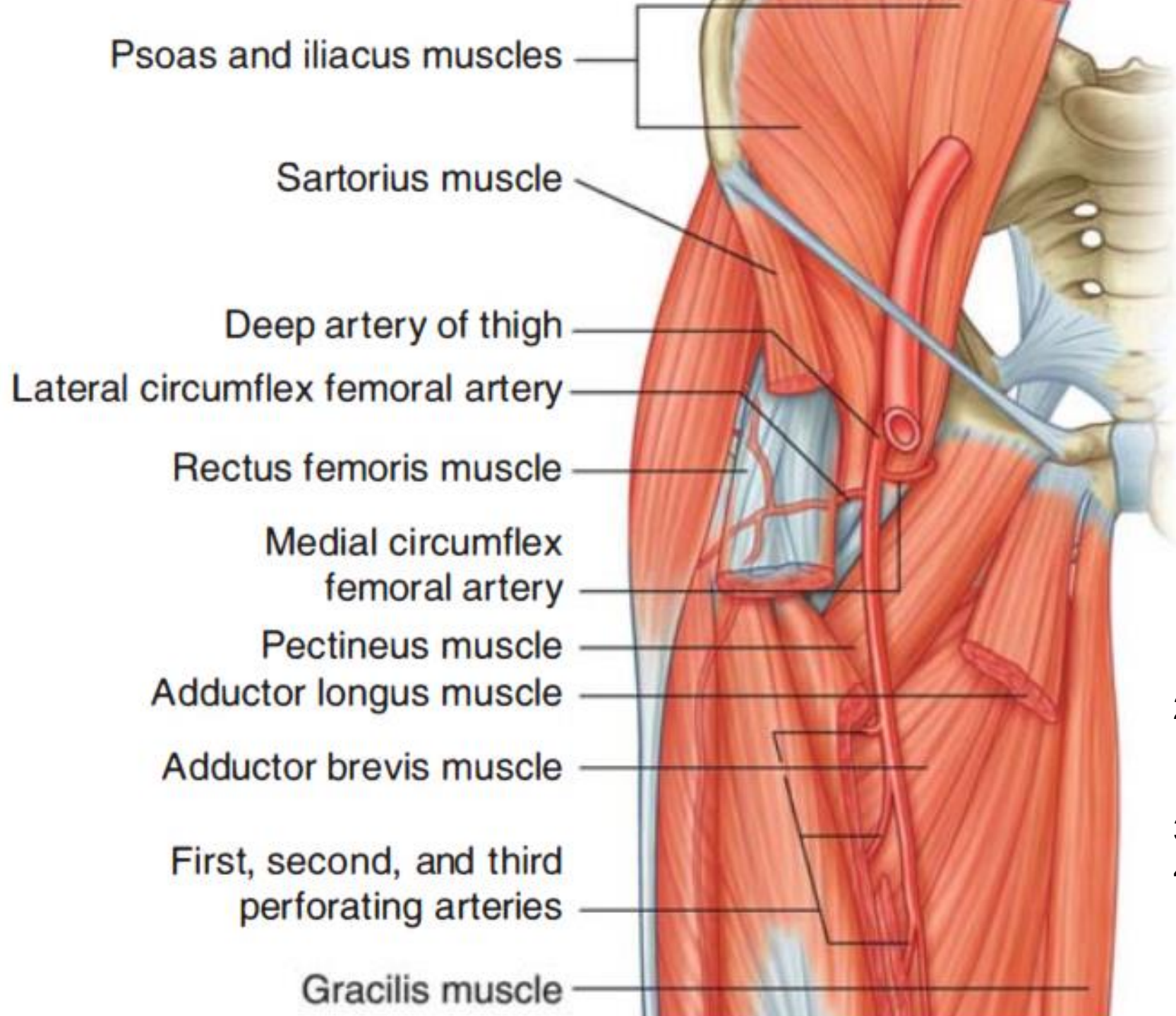


FIGURE 8

MID-PT INGUINAL LIG



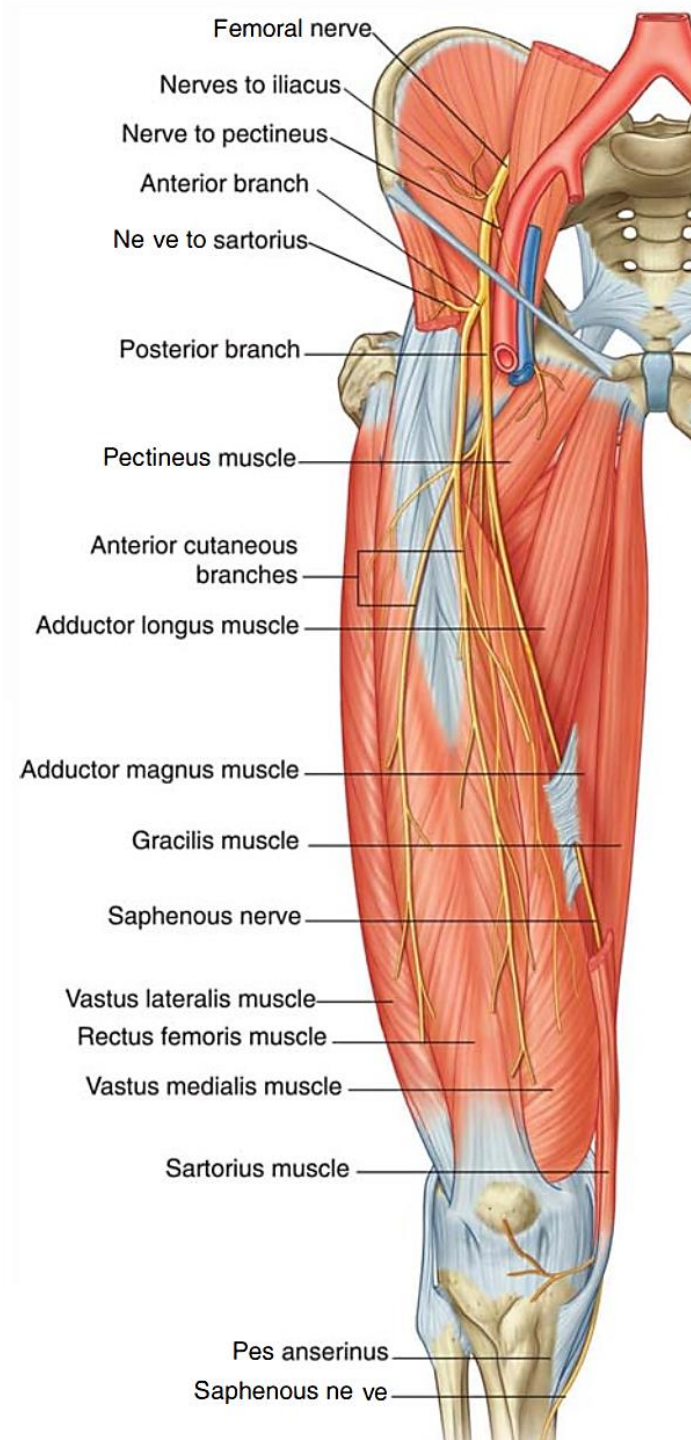


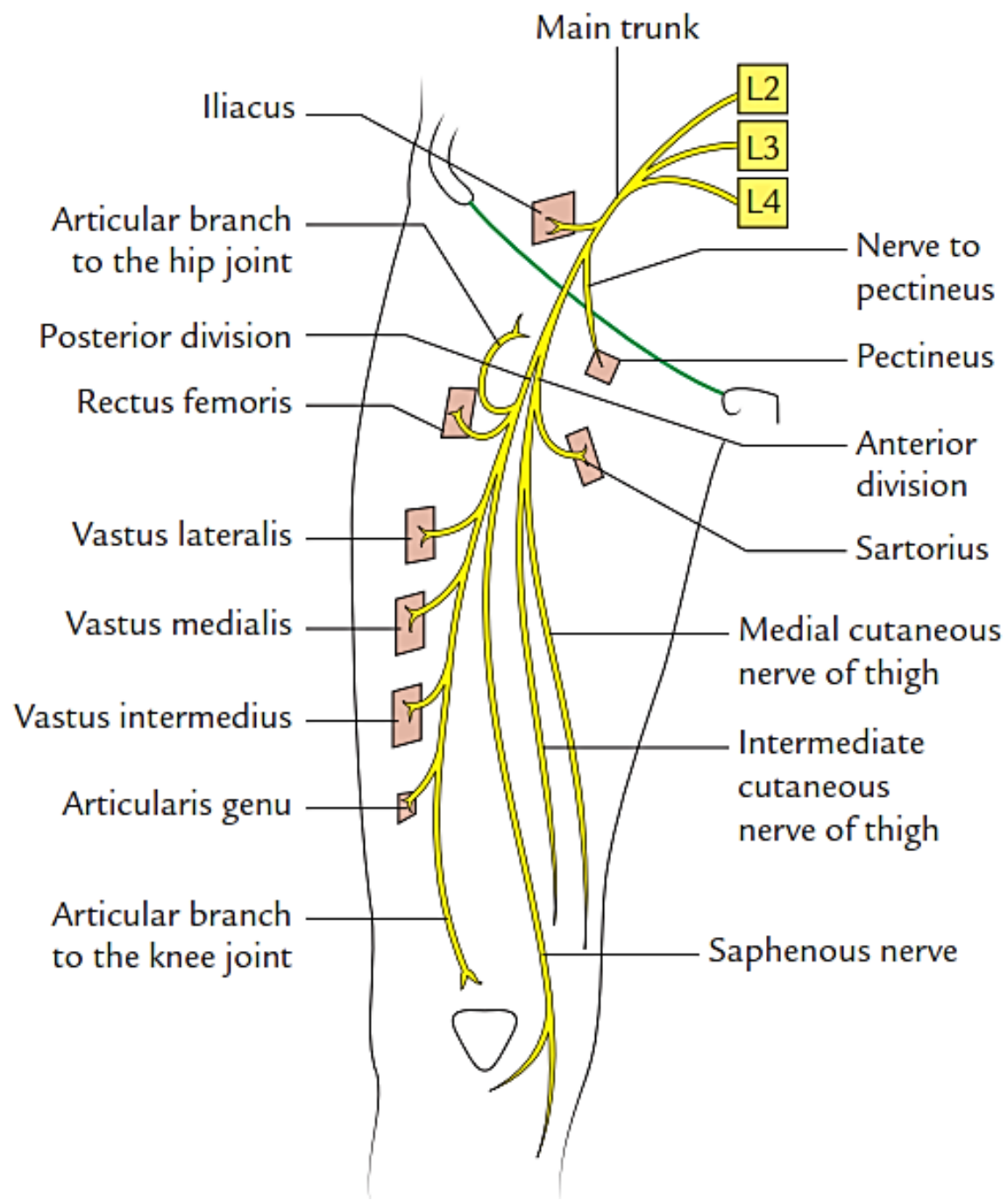


Profunda femoris artery:

1. Medial circumflex femoral .
2. Lateral circumflex femoral a. (ascending, transverse , descending)
3. 3 perforating aa.
4. 4th perforating a.

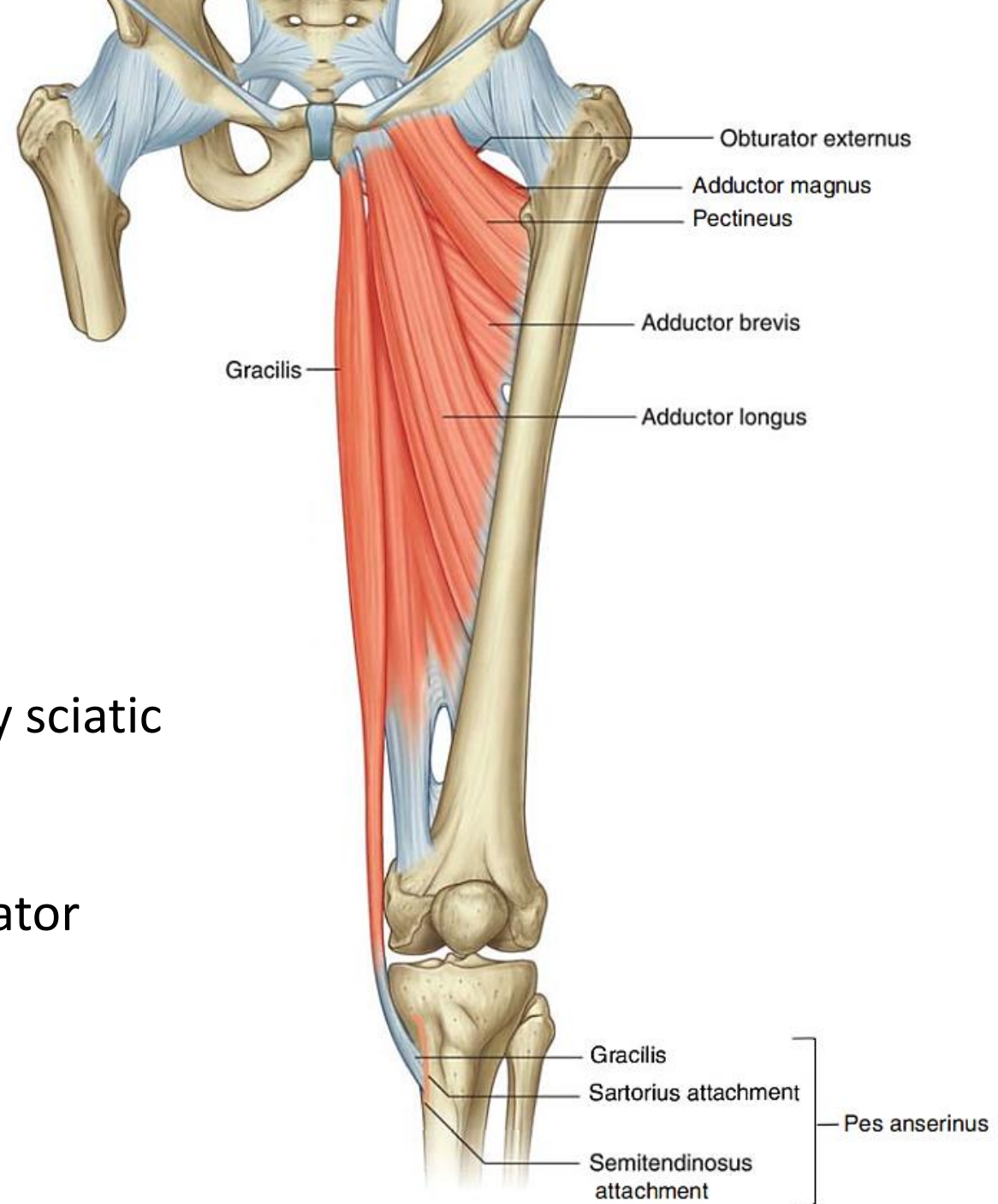
Femoral nerve

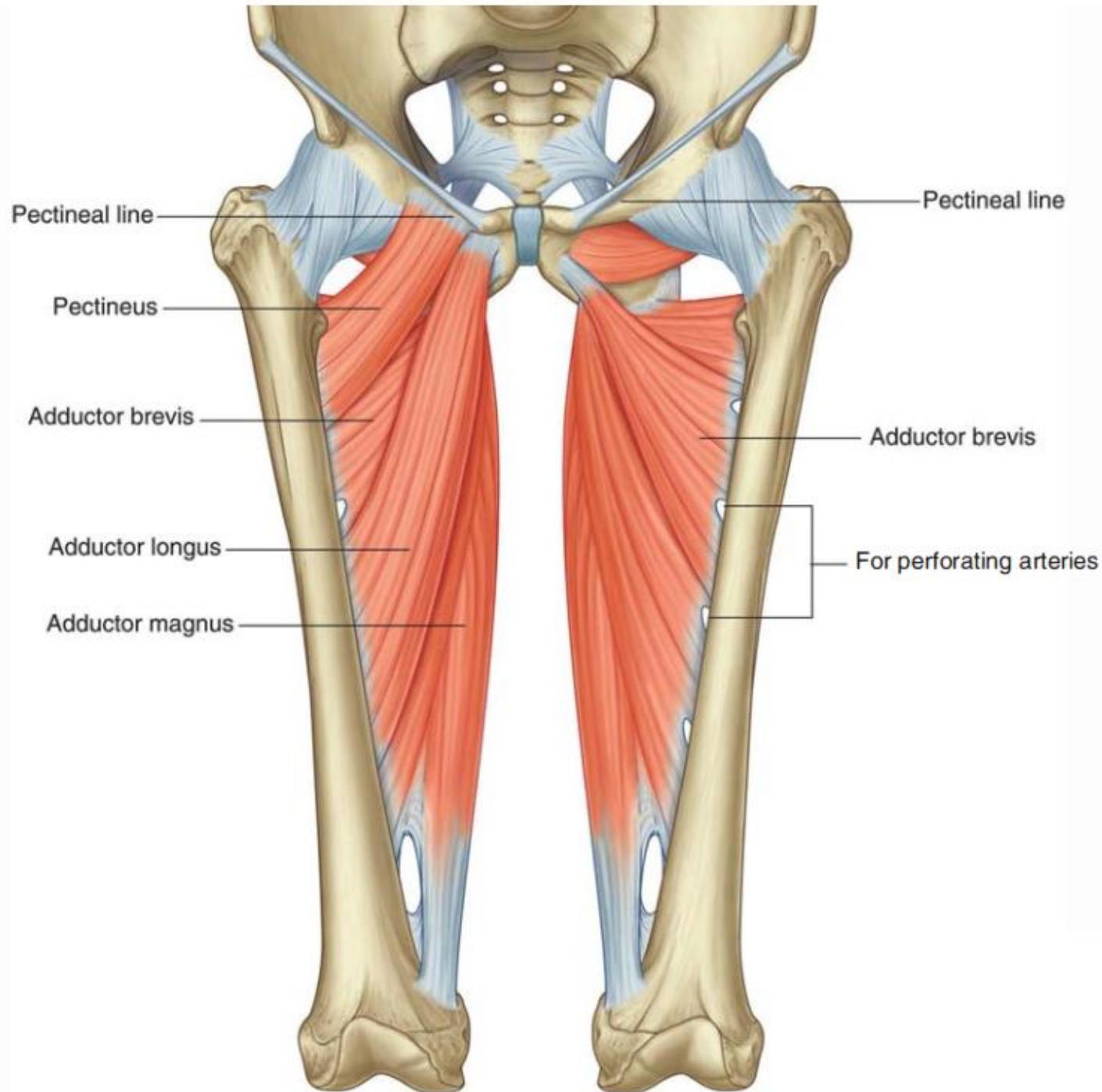


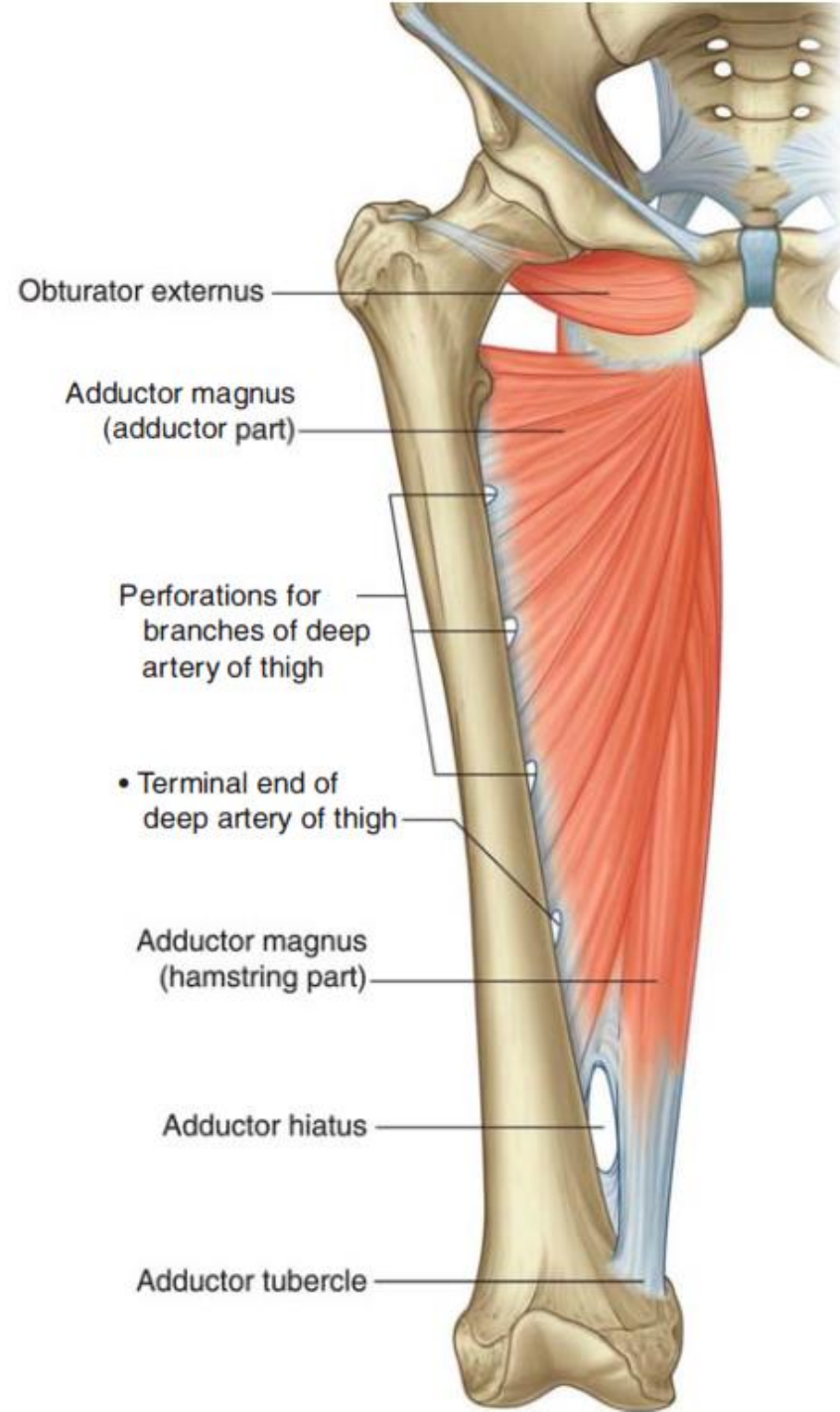


Medial compartment (adductor)

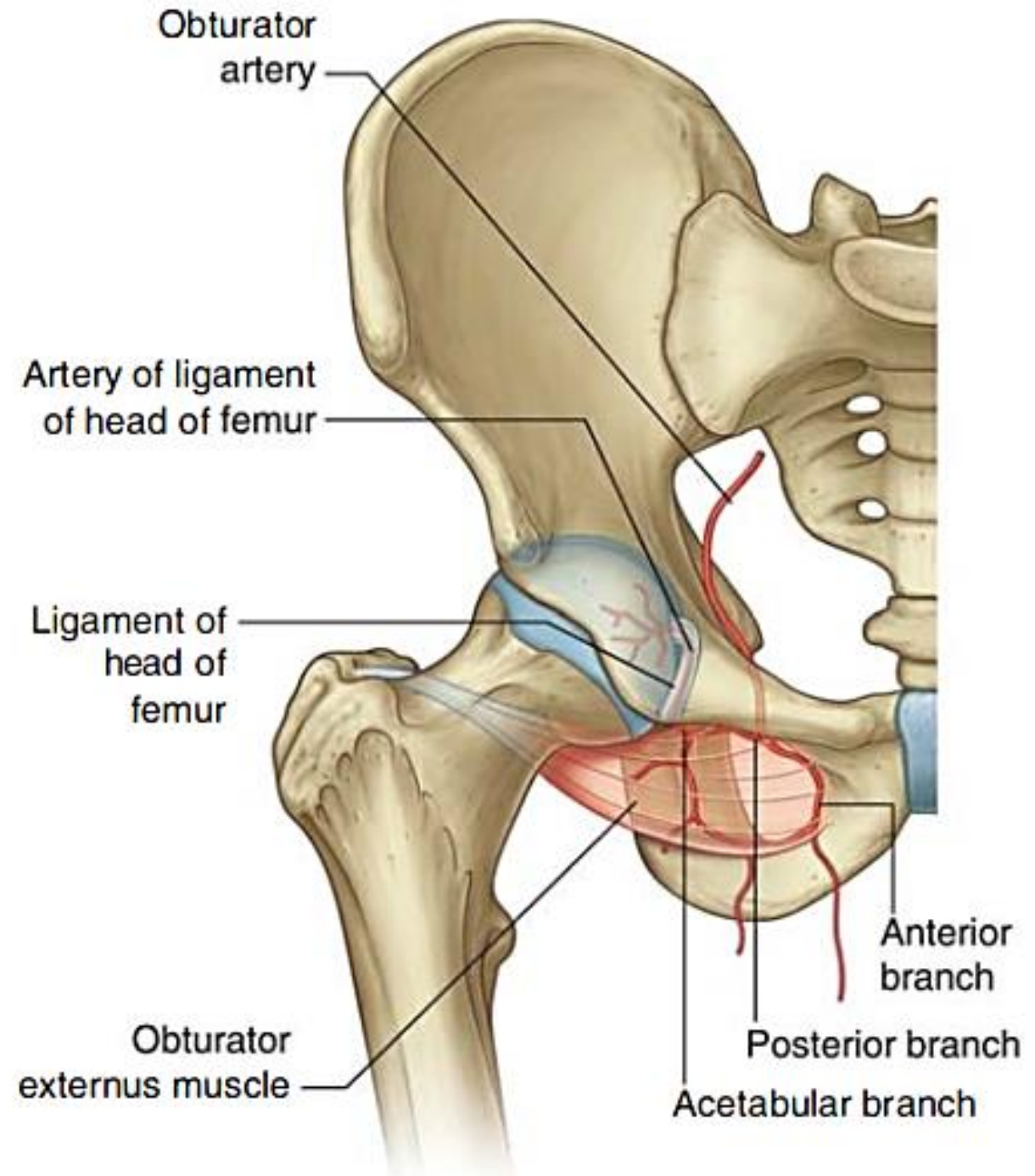
- 6 muscles
- Obturator nerve except:
 - ✓ Pectineus by femoral
 - ✓ Hamstring adductor magnus by sciatic
- Medial rotators of the hip except:
 - ✓ Obturator externus: lateral rotator



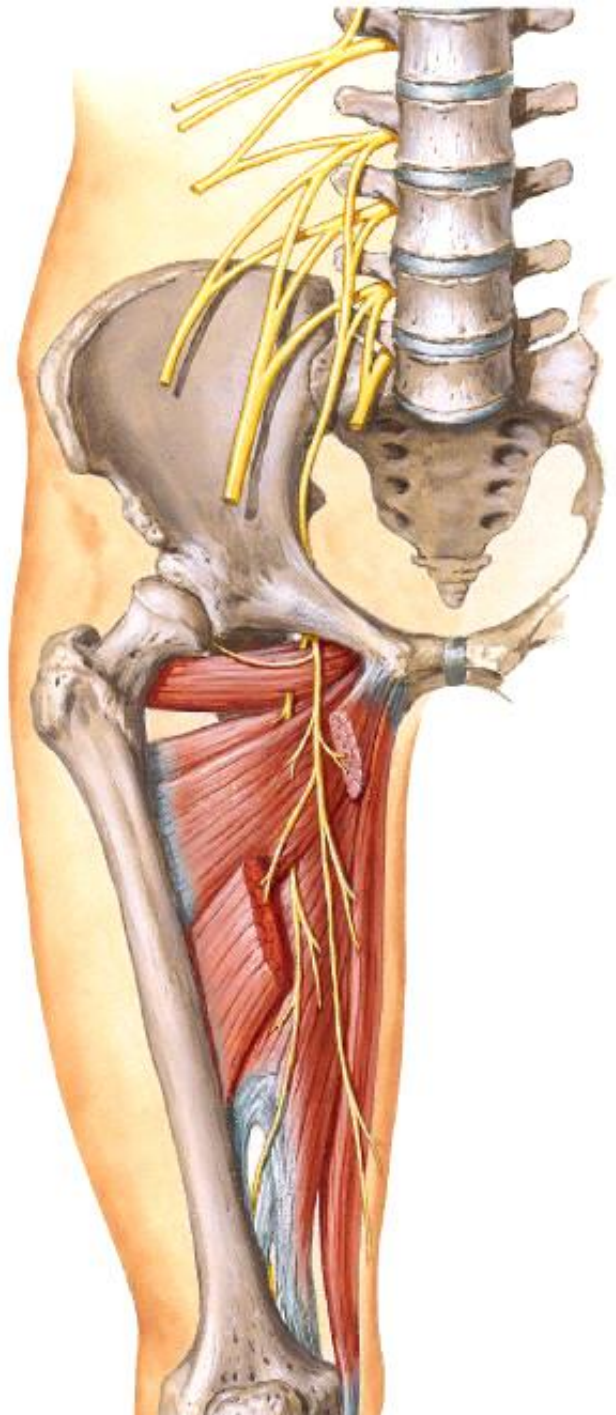
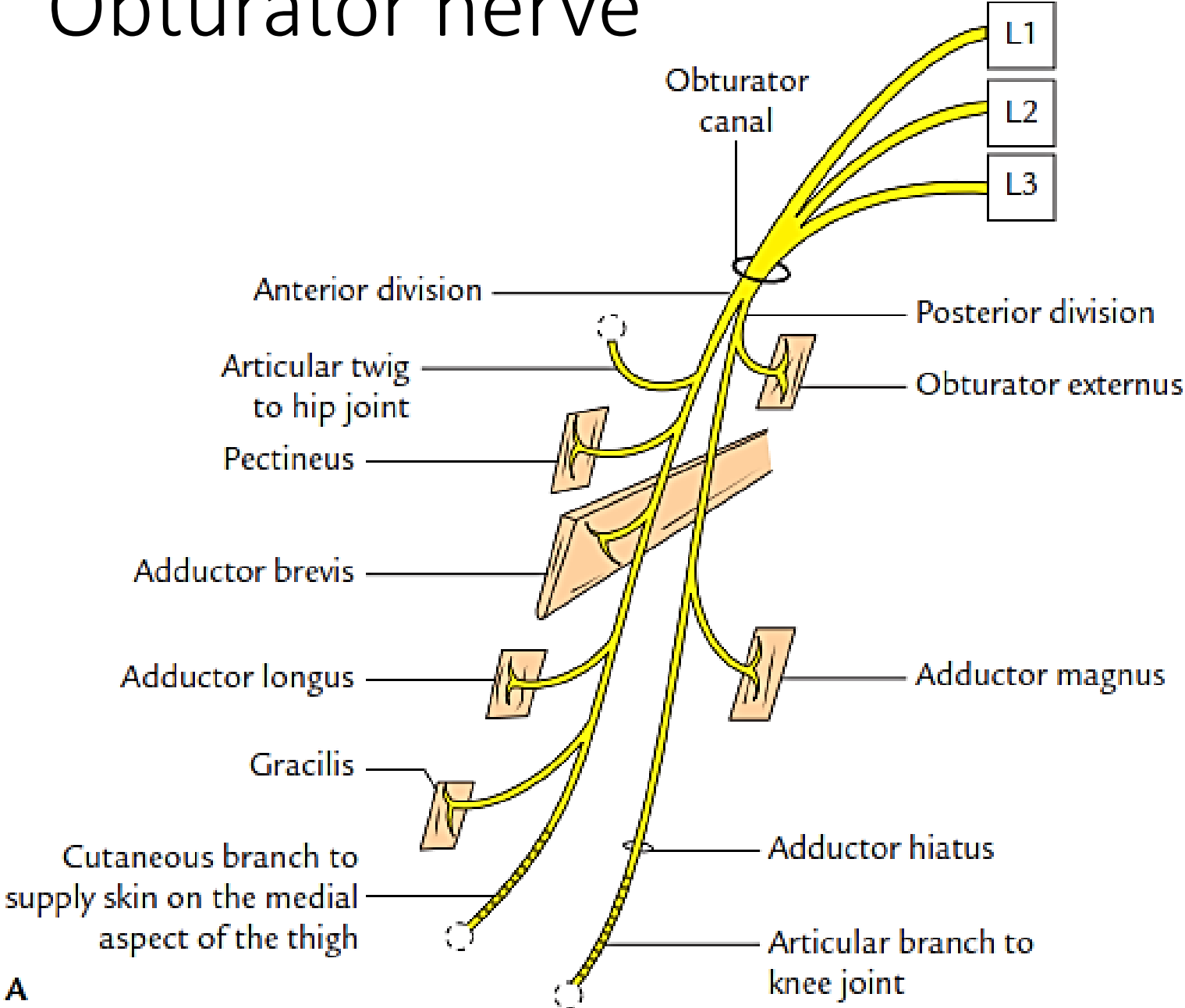




Obturator artery



Obturator nerve



Accessory obturator nerve

