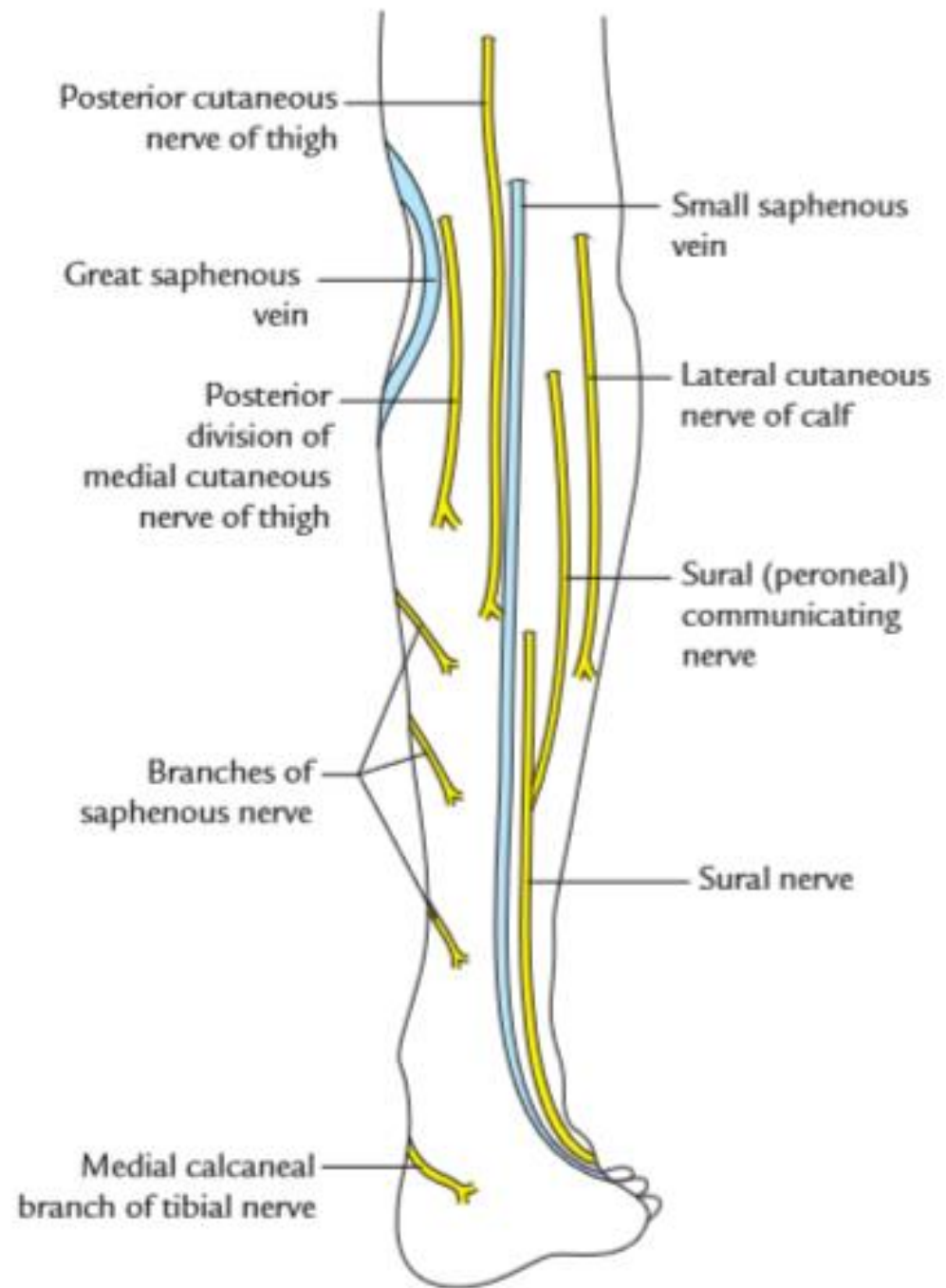


Posterior compartment of the leg and retinacula

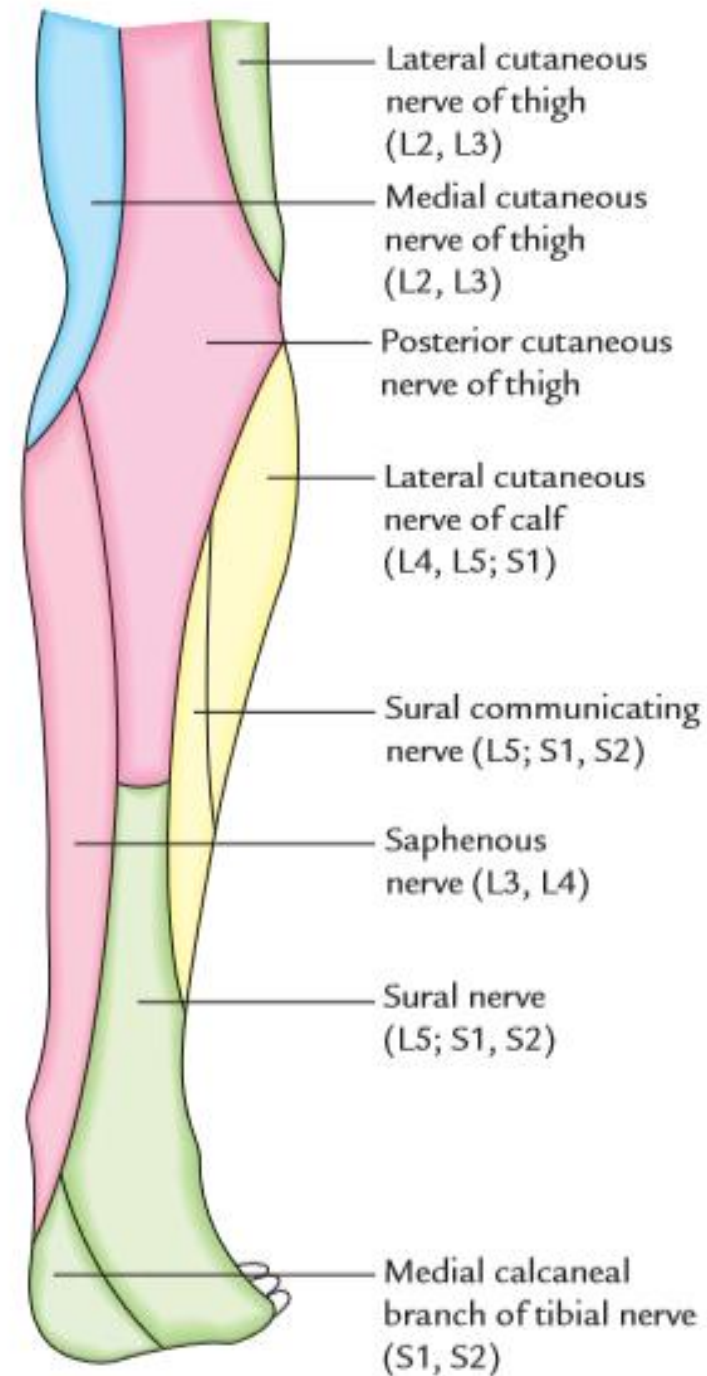


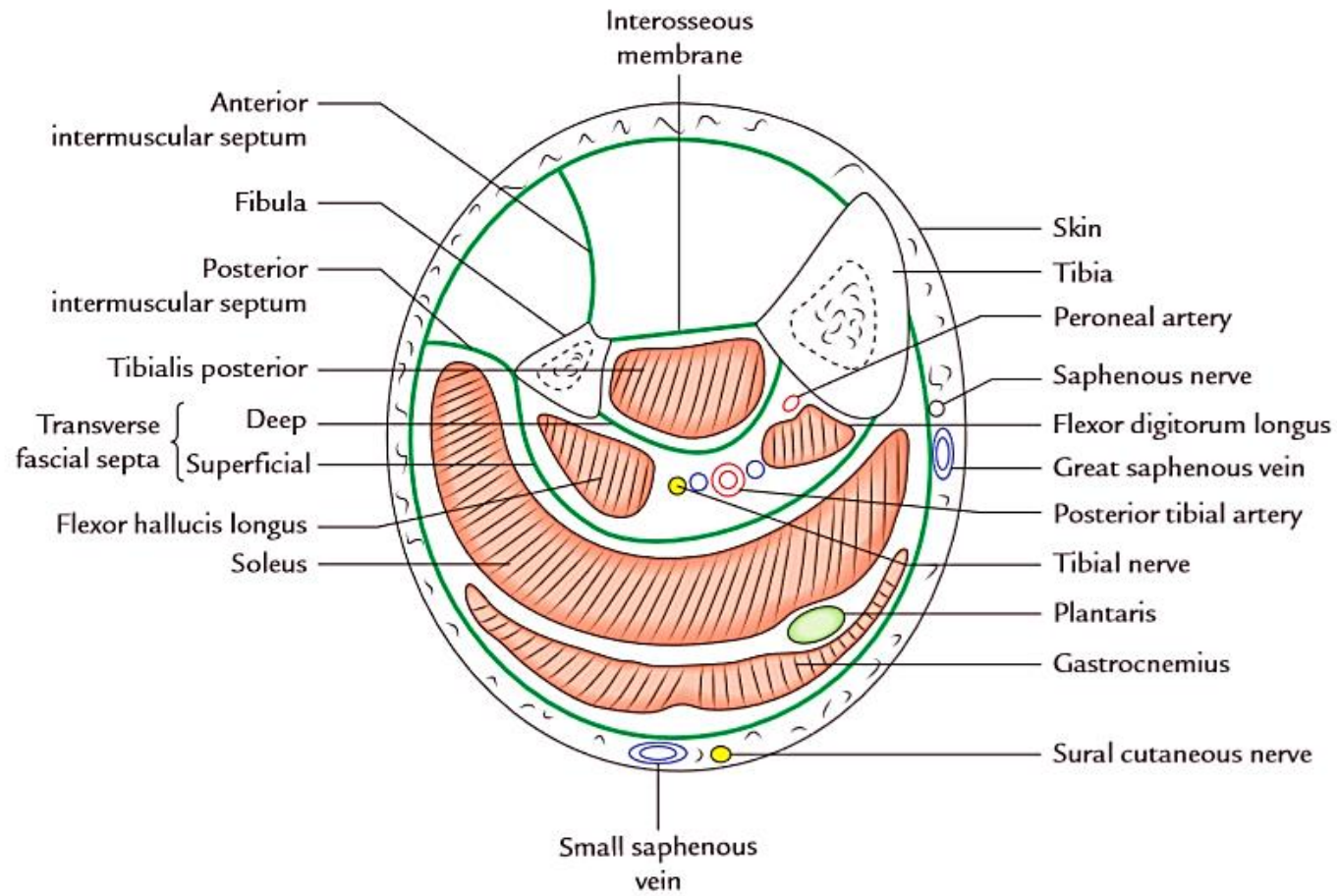
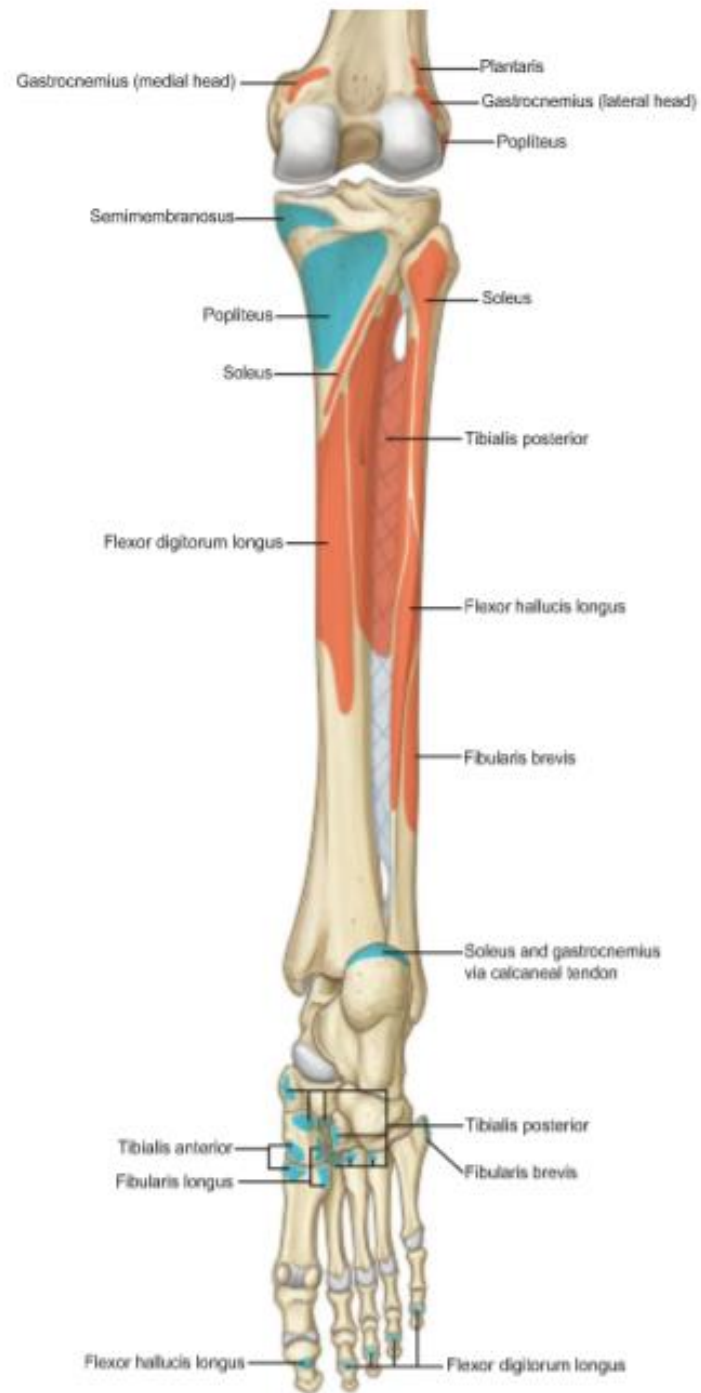
Lecture objectives

- Recognize the cutaneous nerves of the posterior leg
- Identify the muscles of this compartment
- Study the neurovascular bundle in this compartment
- Recognize attachments, relations & structure underneath the retinaculae around the ankle

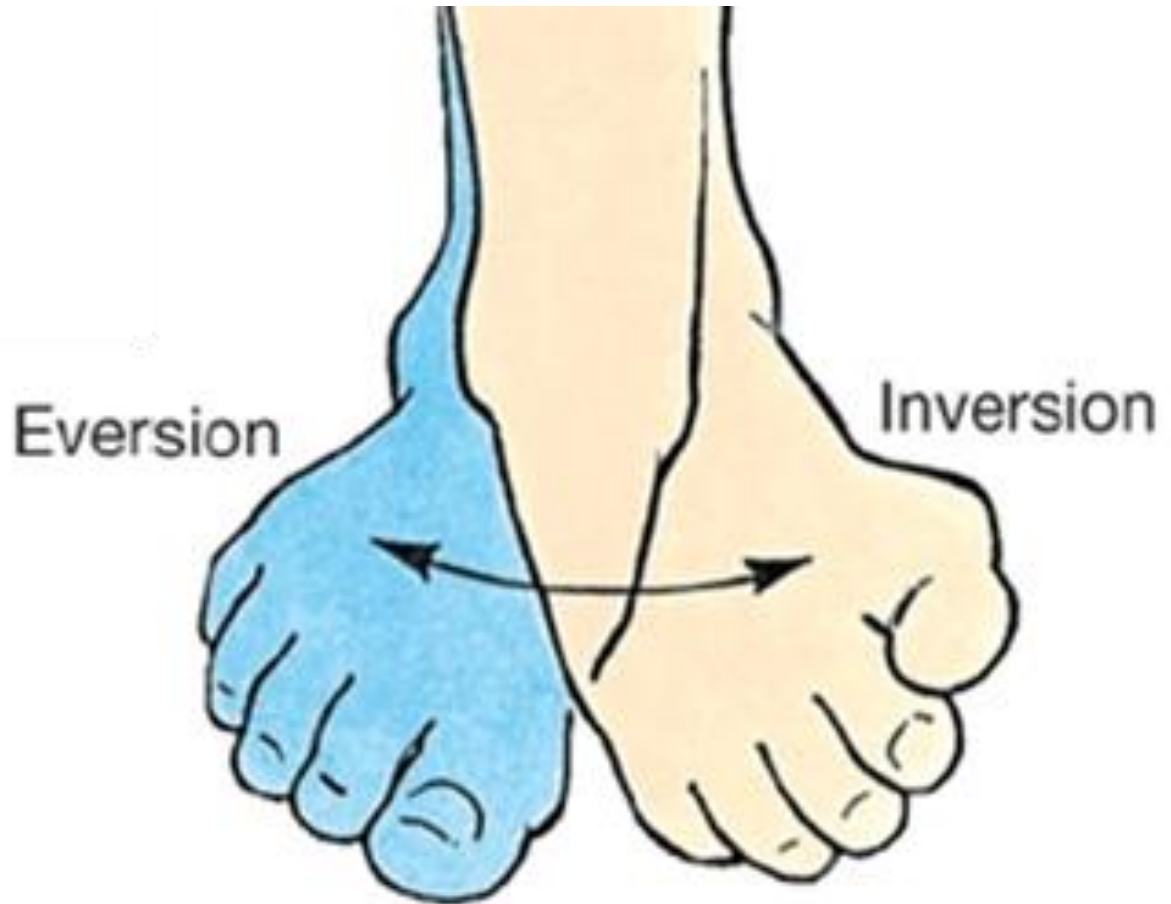


Cutaneous innervation





Movements at ankle joints



(a)

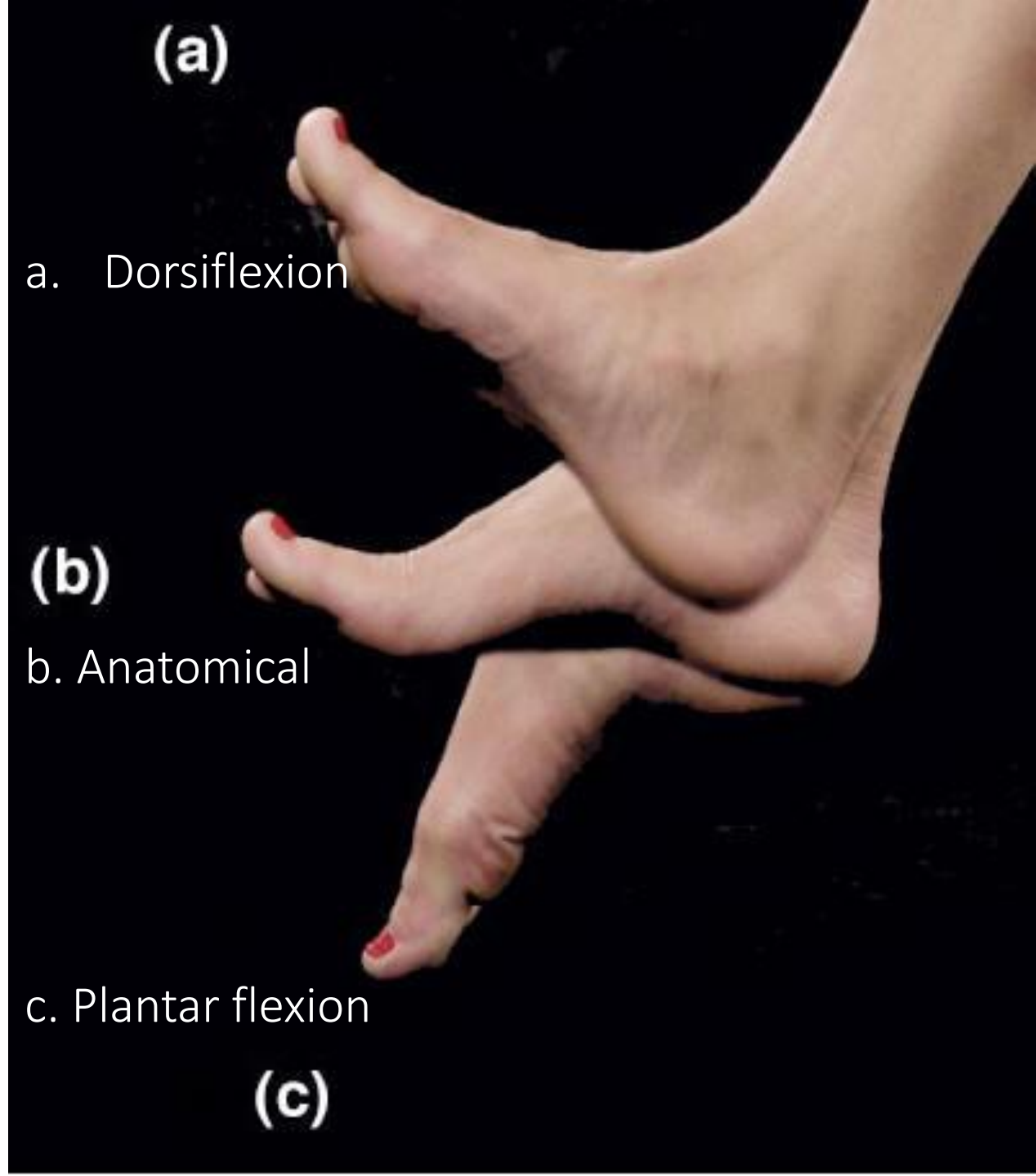
a. Dorsiflexion

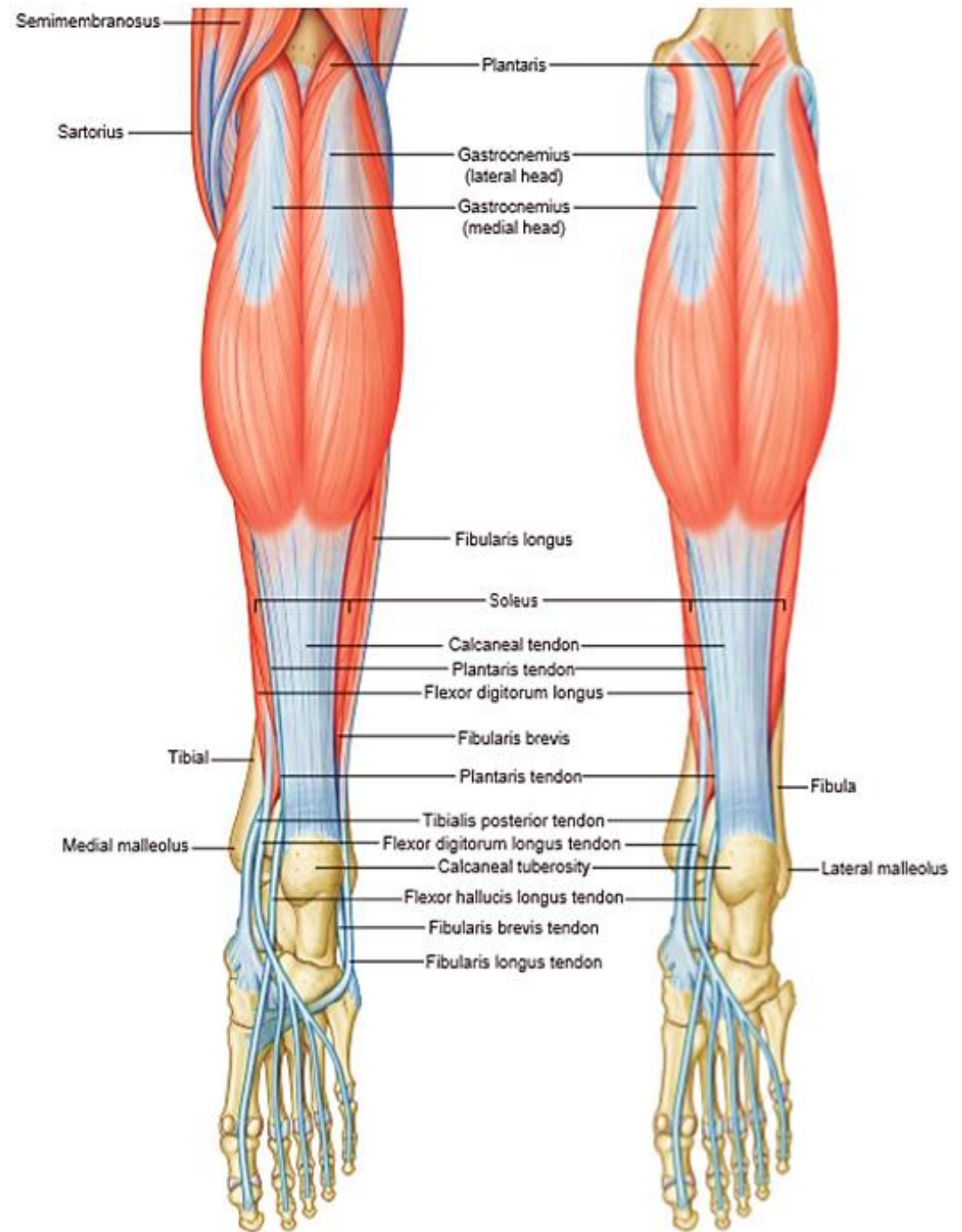
(b)

b. Anatomical

c. Plantar flexion

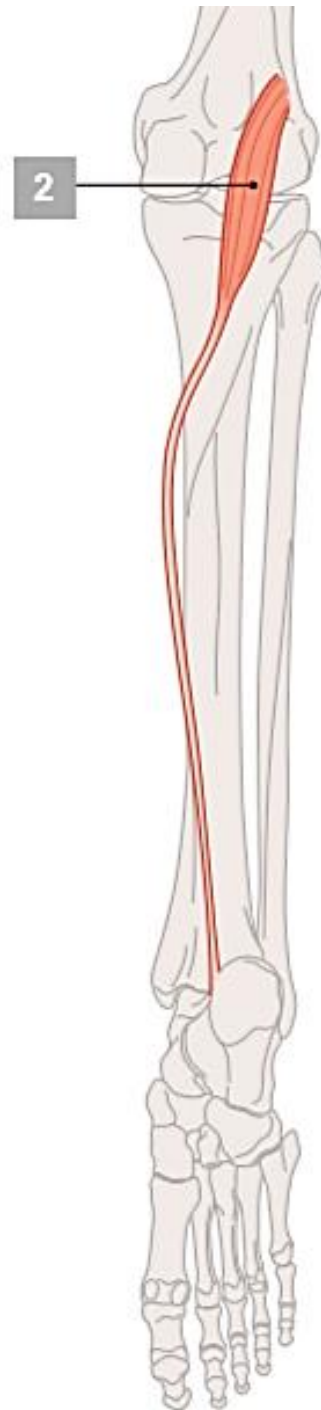
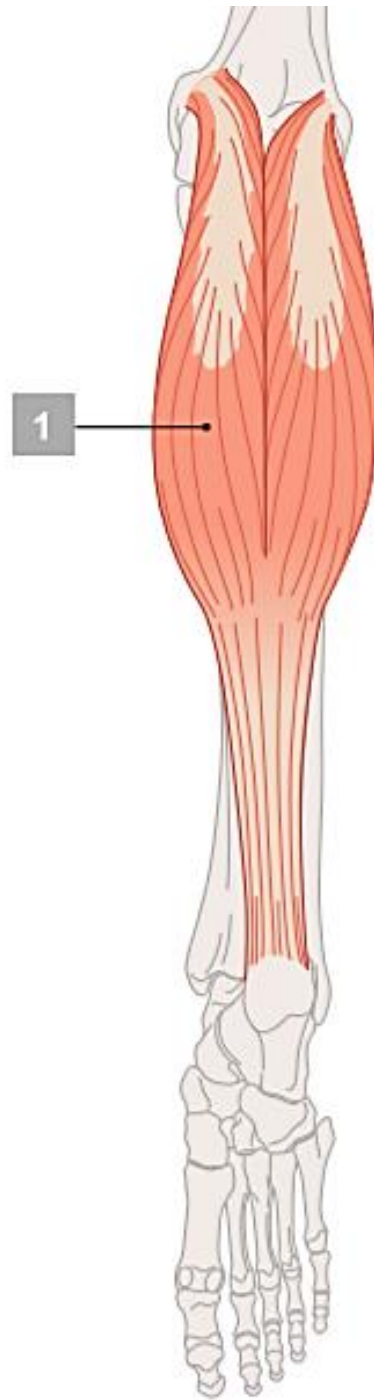
(c)

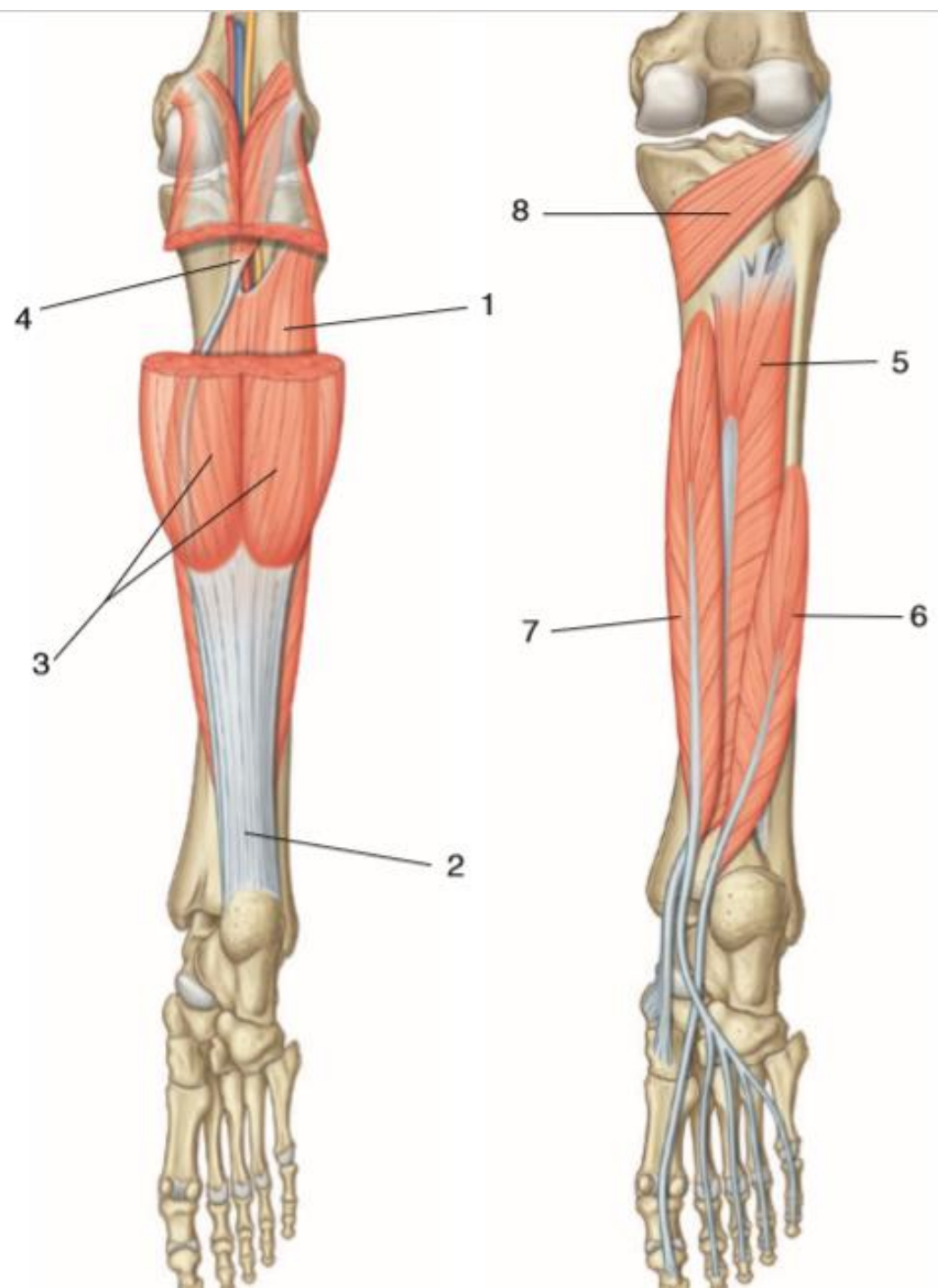




- 1- Gastrocnemius
- 2- Plantaris
- 3- Soleus

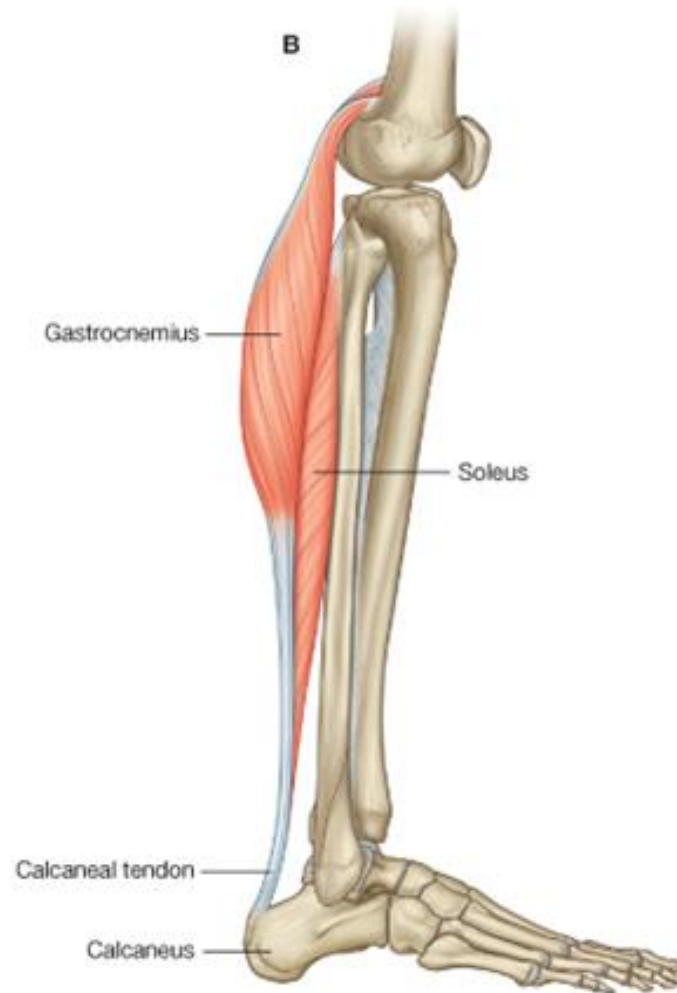
Triceps surae



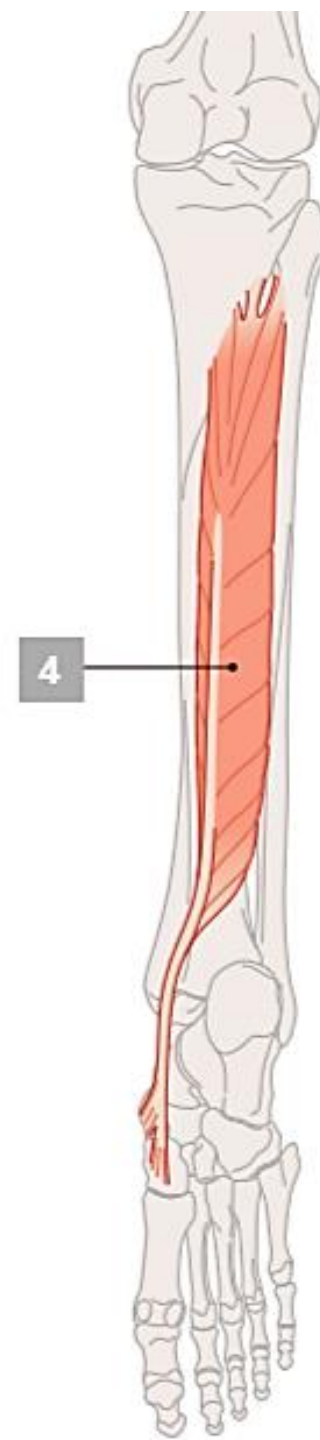
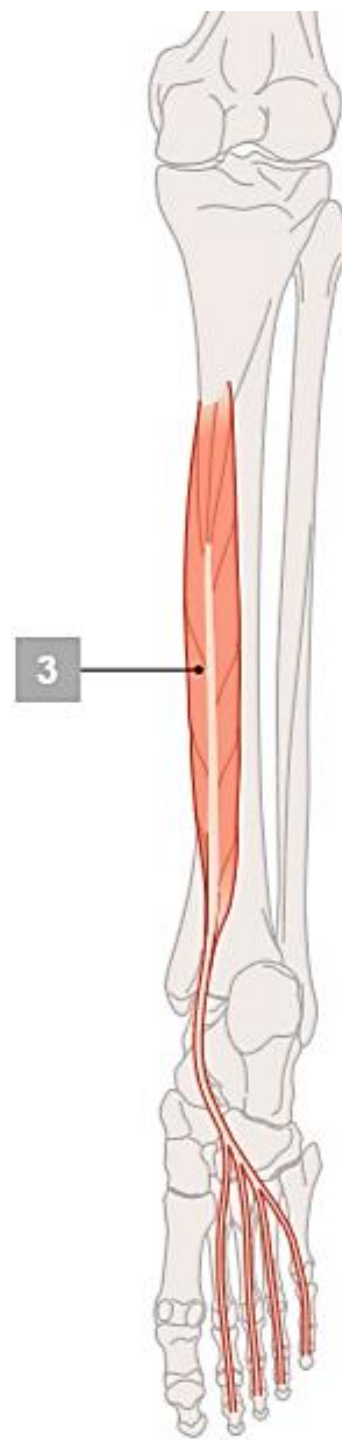
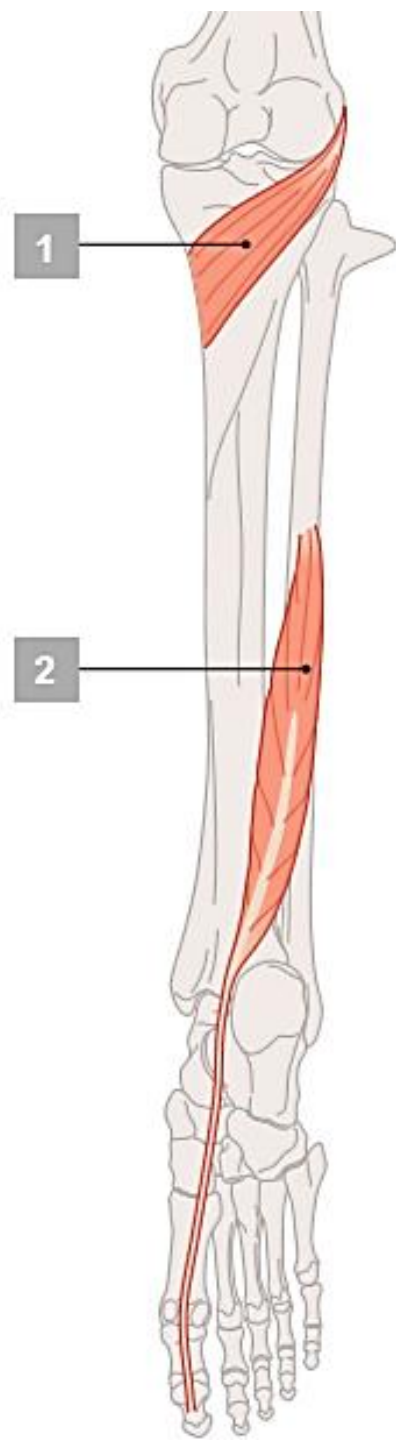


Achilles tendon

- Calcaneal tendon



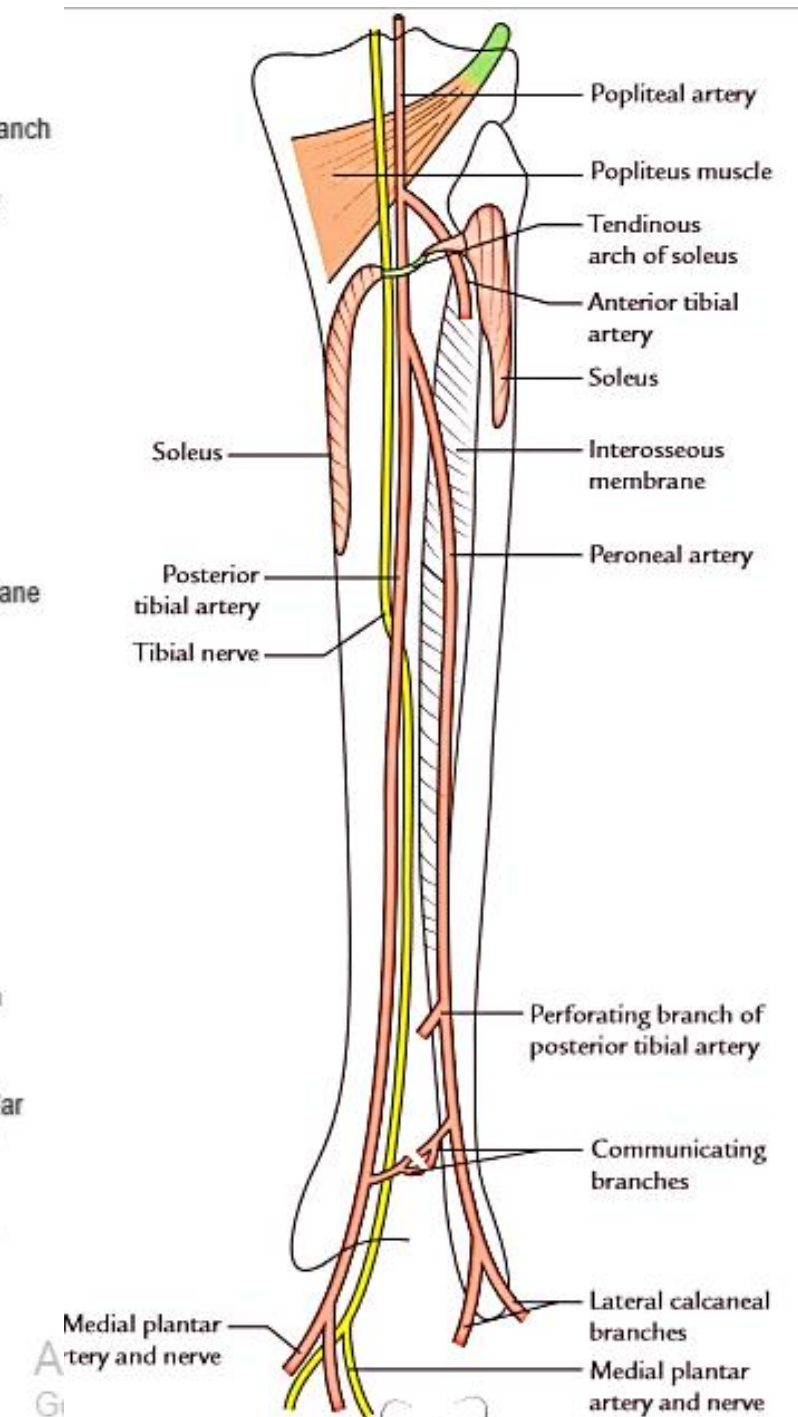
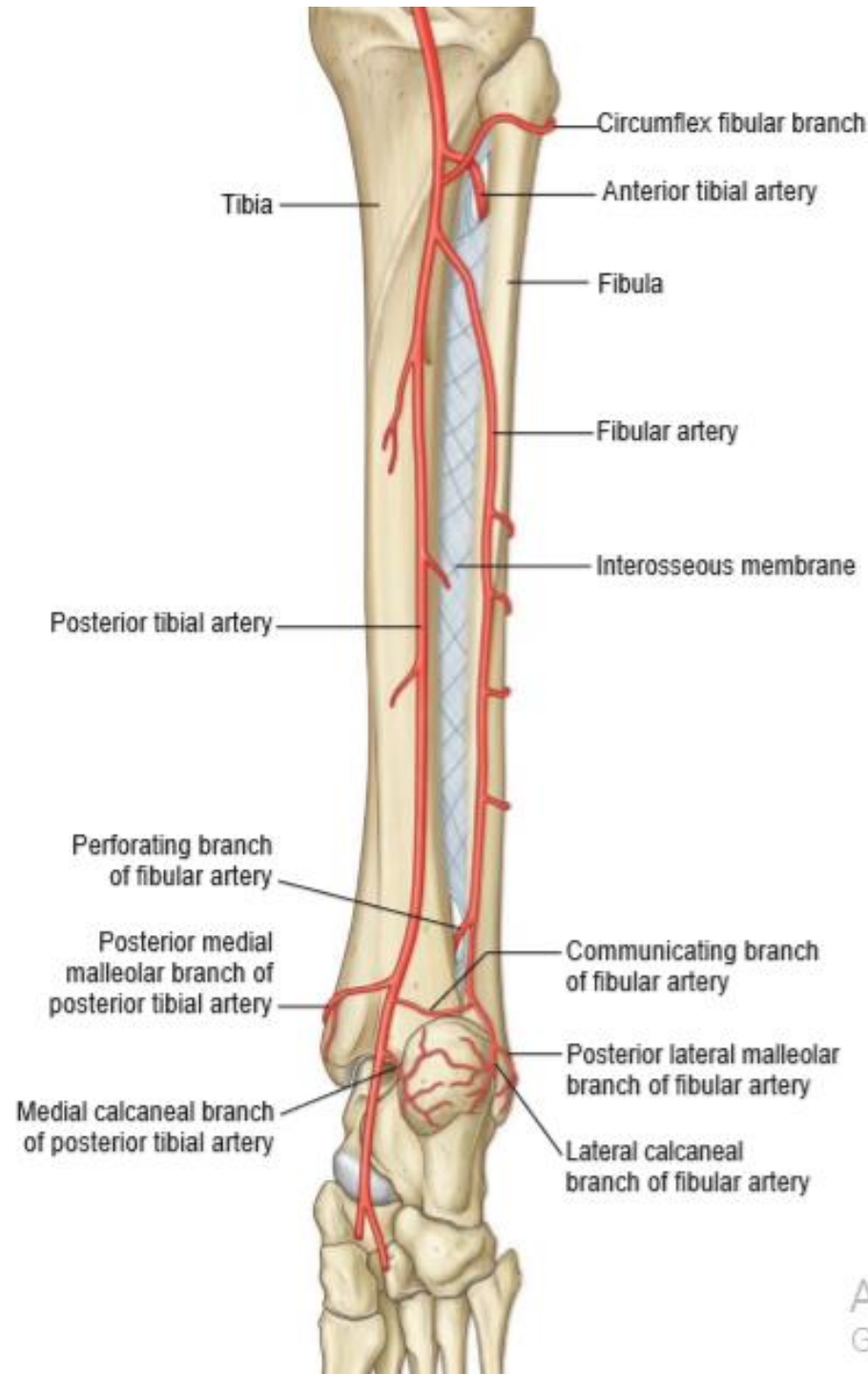
- 1-Popletius
- 2- FHL
- 3- FDL
- 4- TP



Tibial art.

Branches

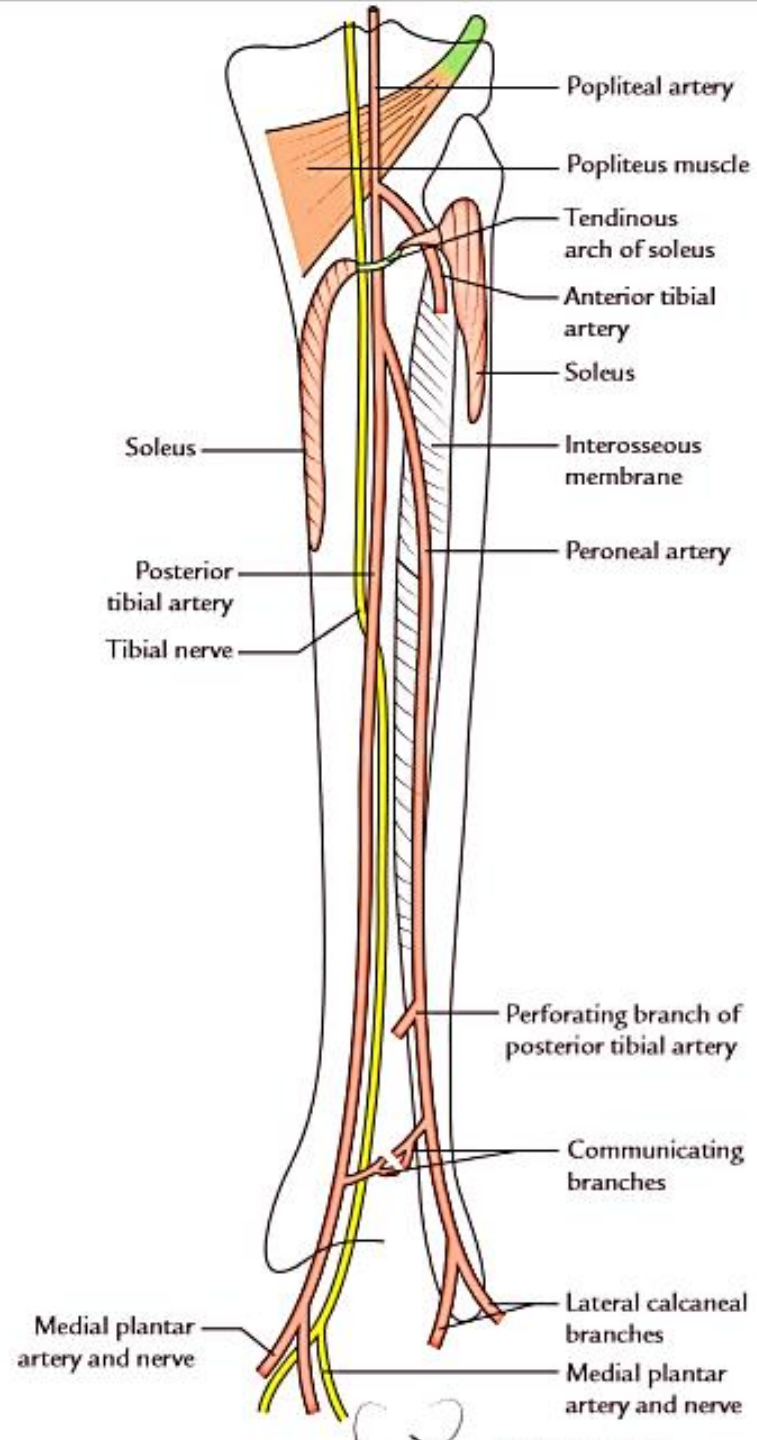
- Peroneal
- Nutrient
- Muscular
- Circumflex peroneal
- Communicating
- Med. Malleolar
- Med. Calcaneal
- Lat. & med. planter

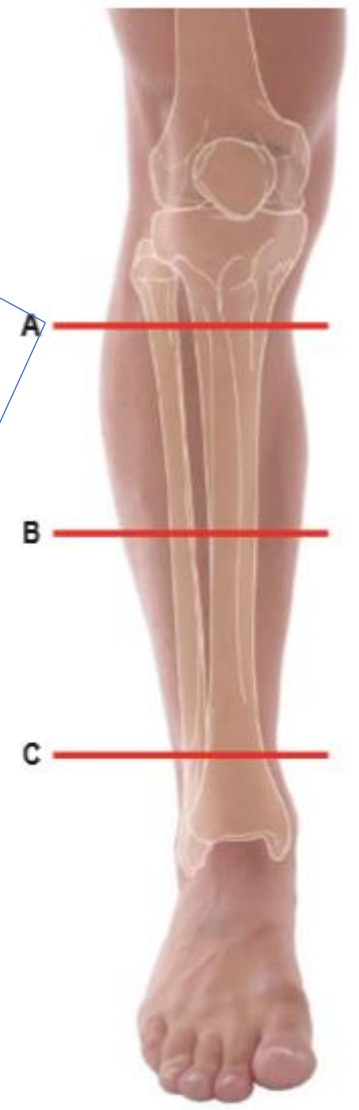
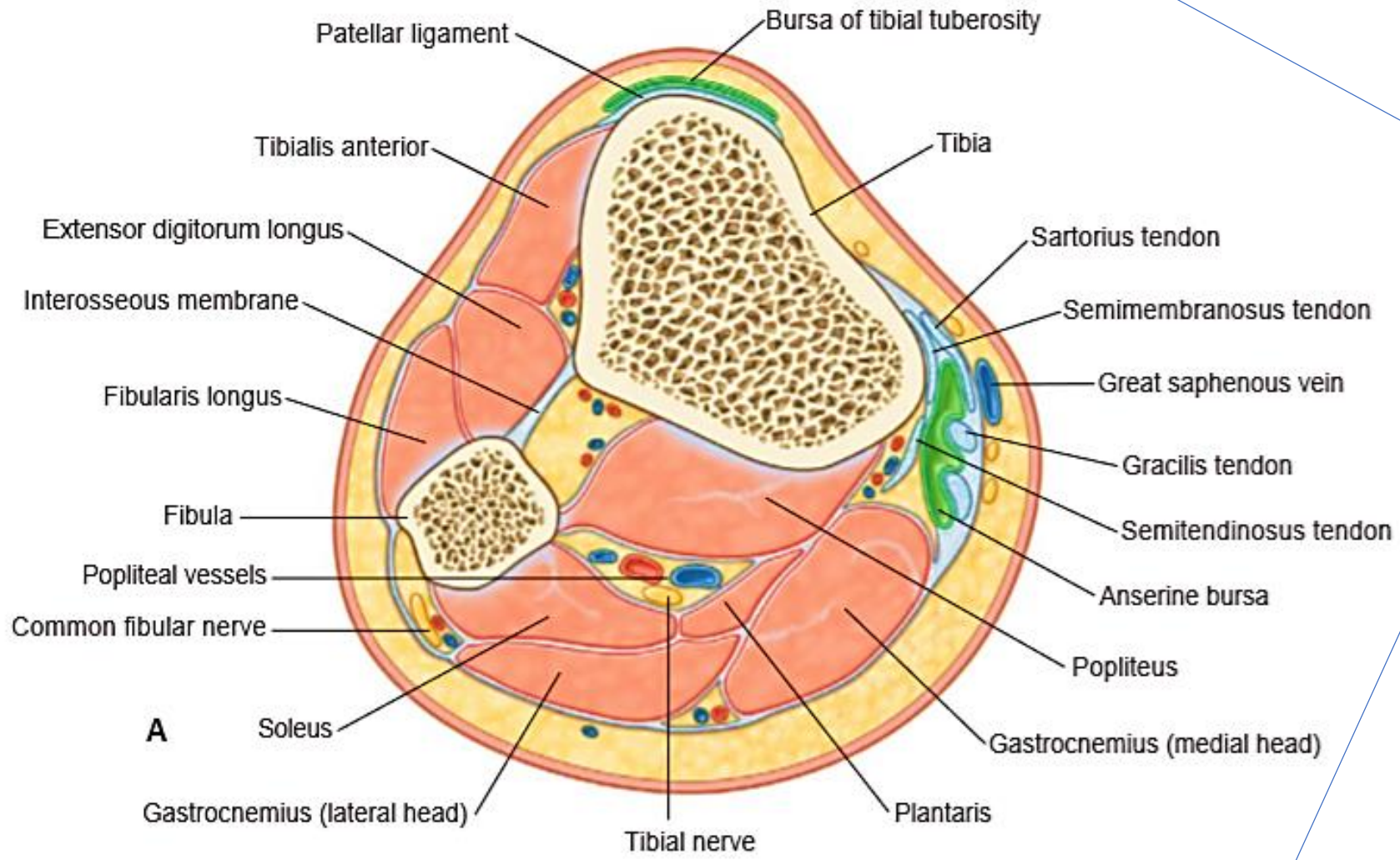


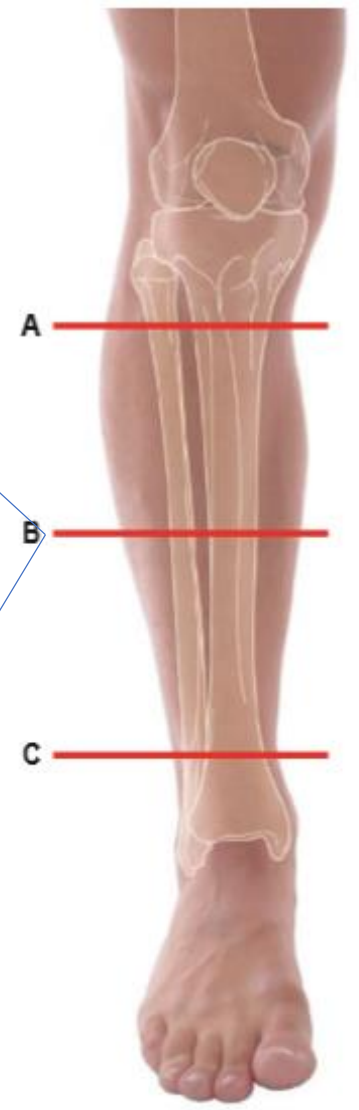
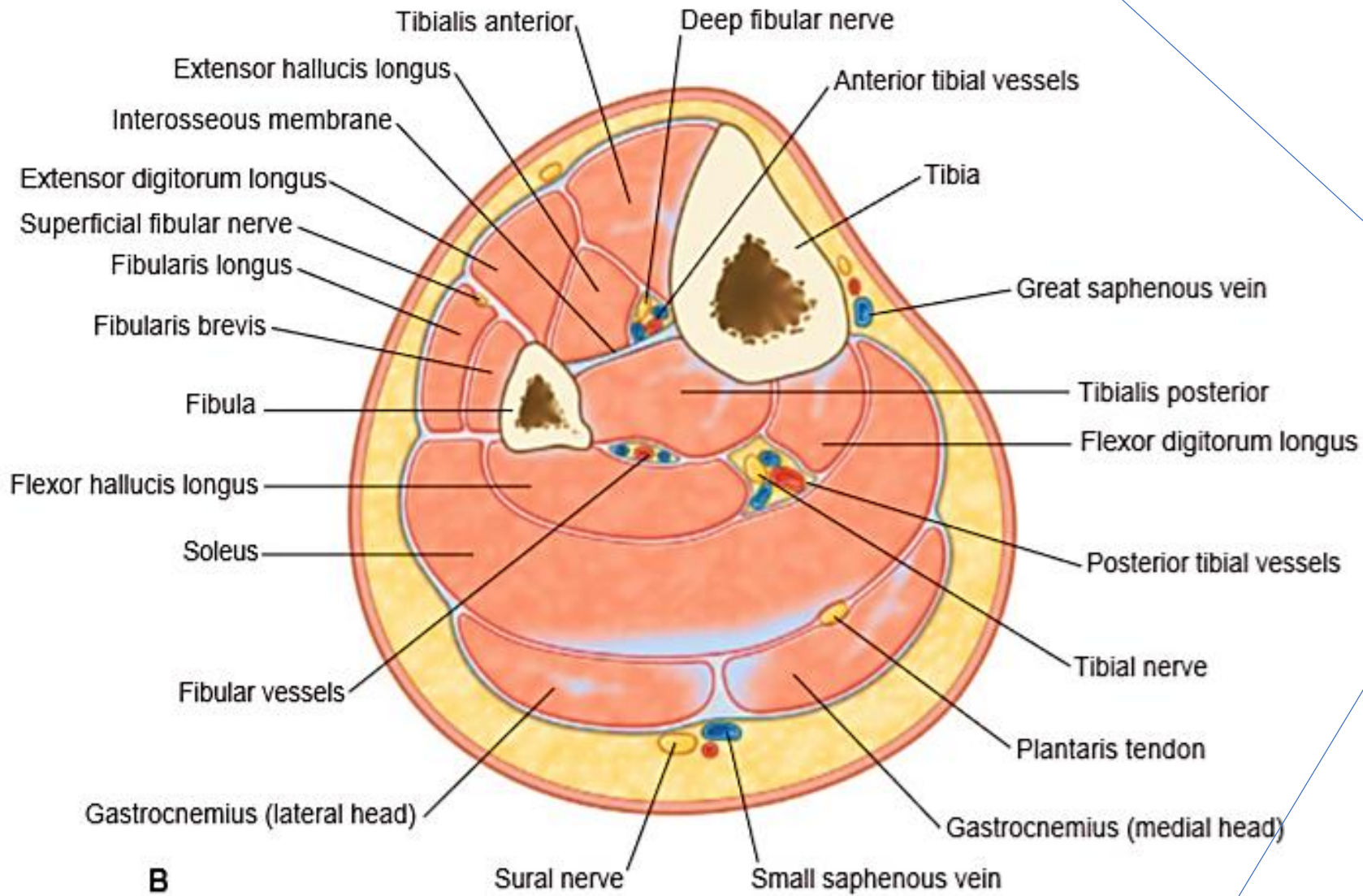
Peroneal art.

Branches

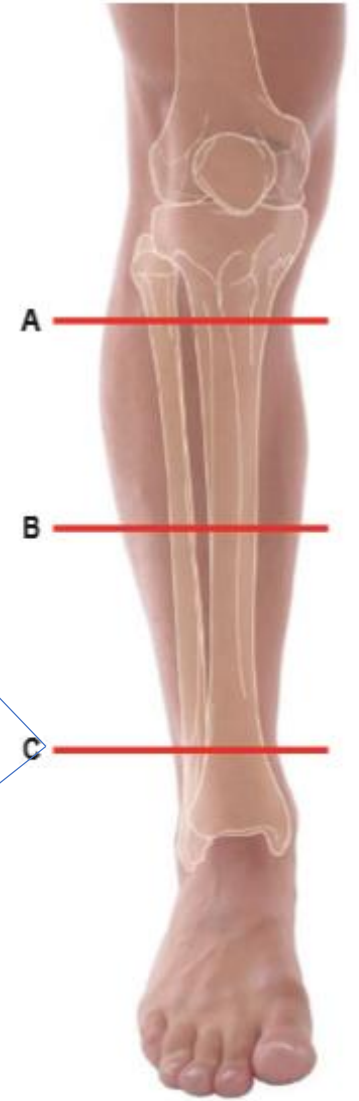
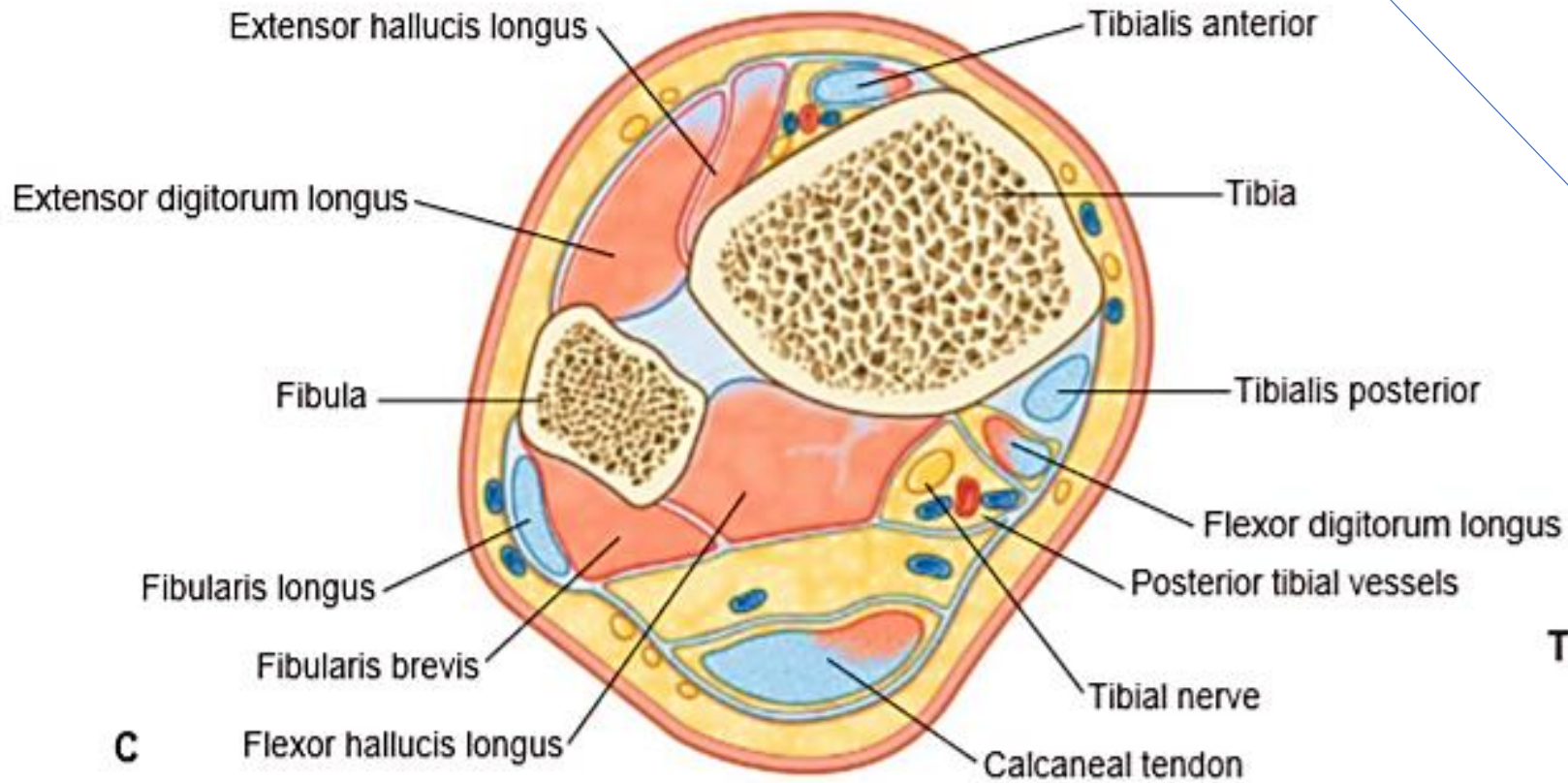
- Muscular
- Perforating
- Nutrient to fibula
- Lat. Malleolar
- Lat. calcaneal







B

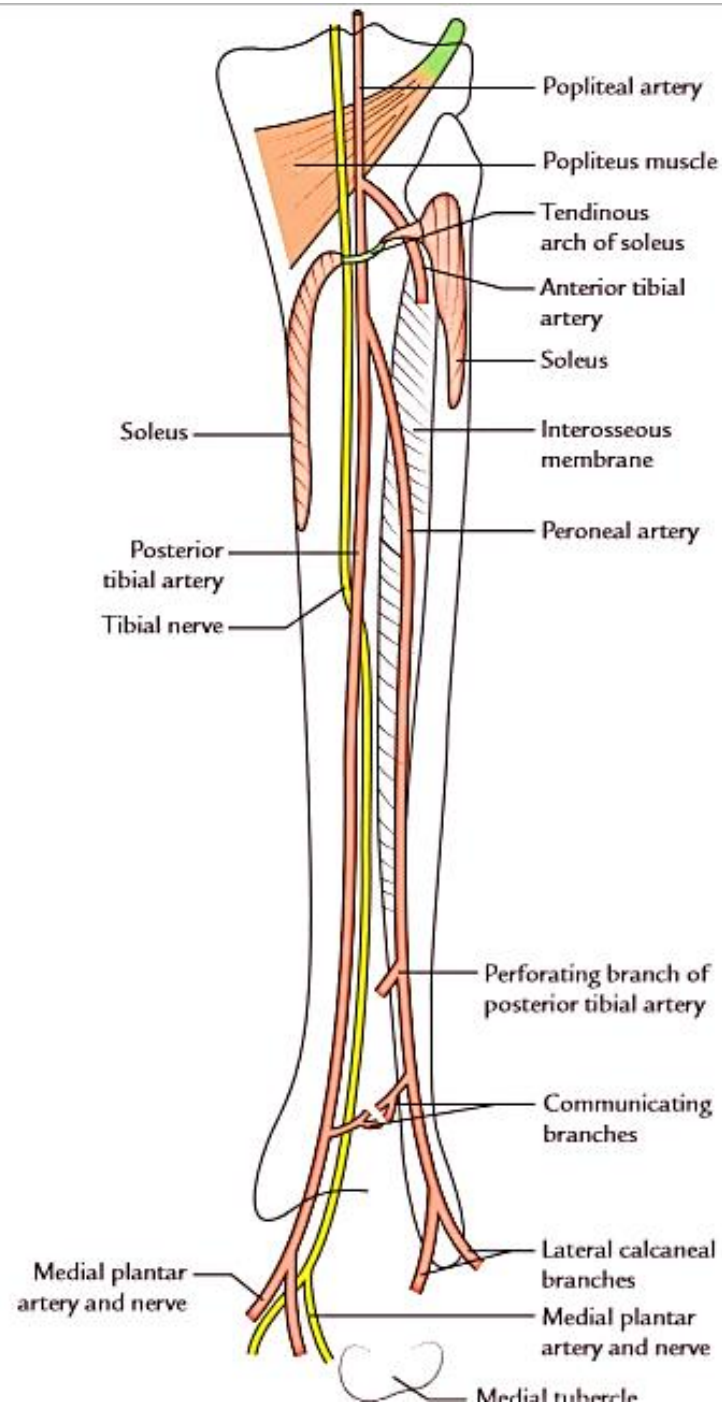


Trans:

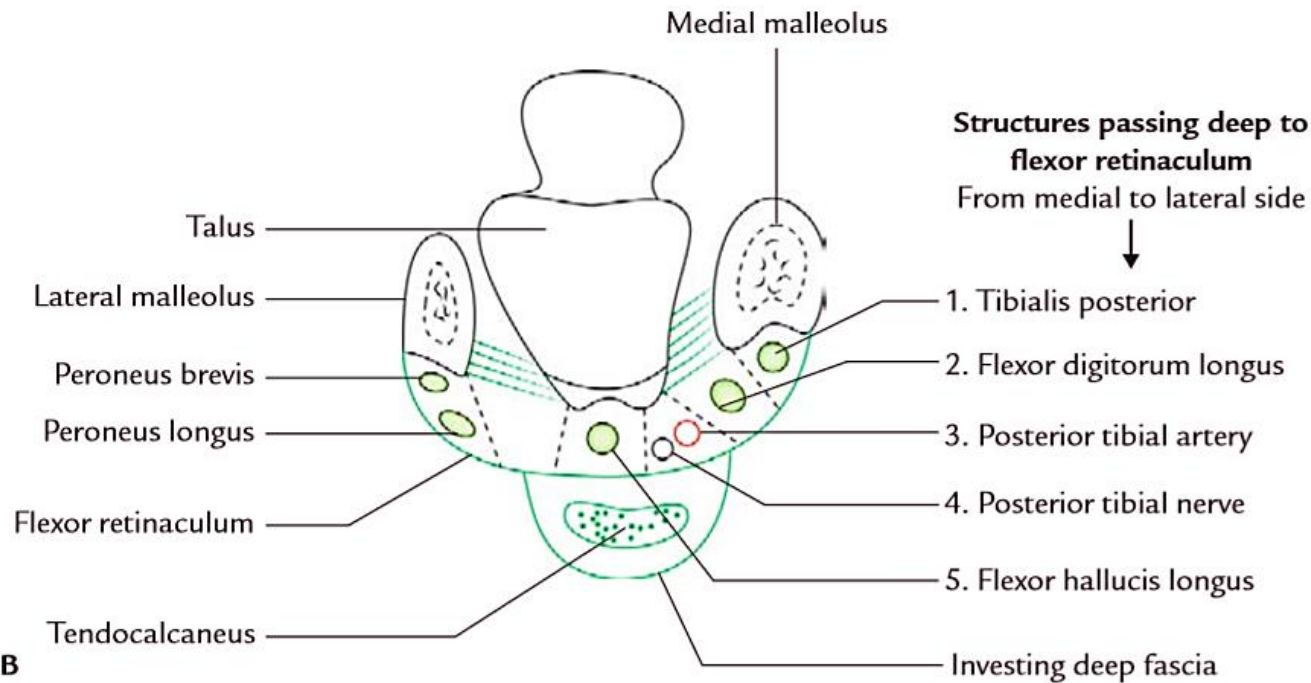
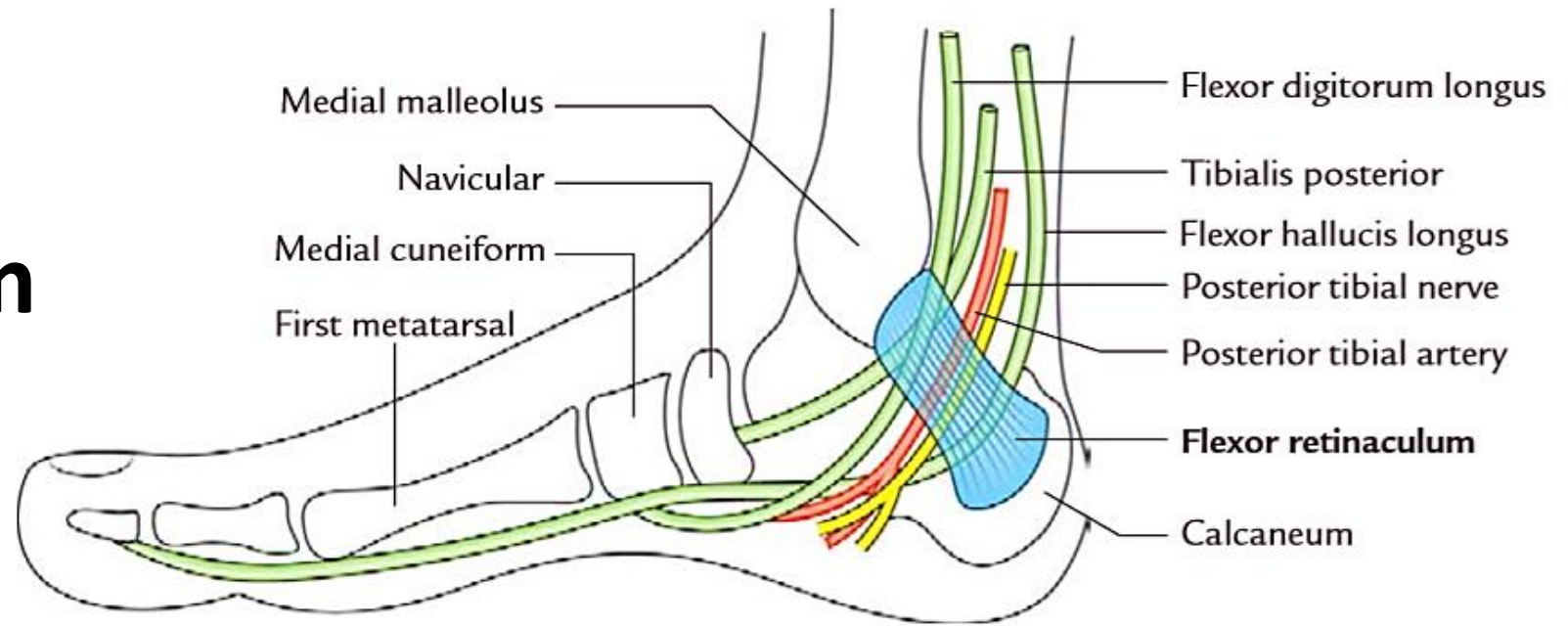
Tibial nerve

Branches

- Muscular brs
(superficial layer in popliteal fossa)
(deep layer in the post. Leg)
- Medial calcaneal
- Articular to ankle
- Med. & Lat. planter

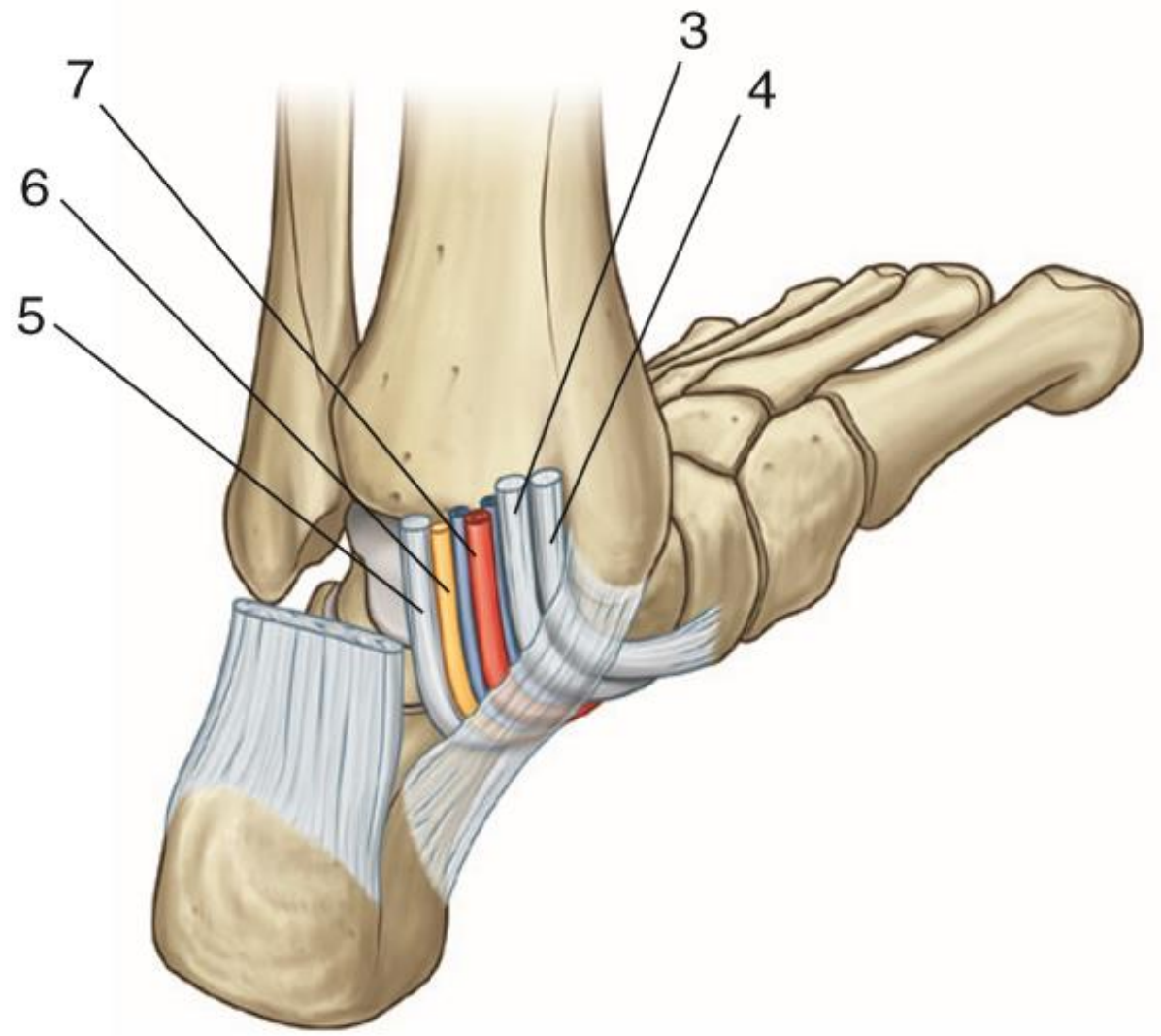
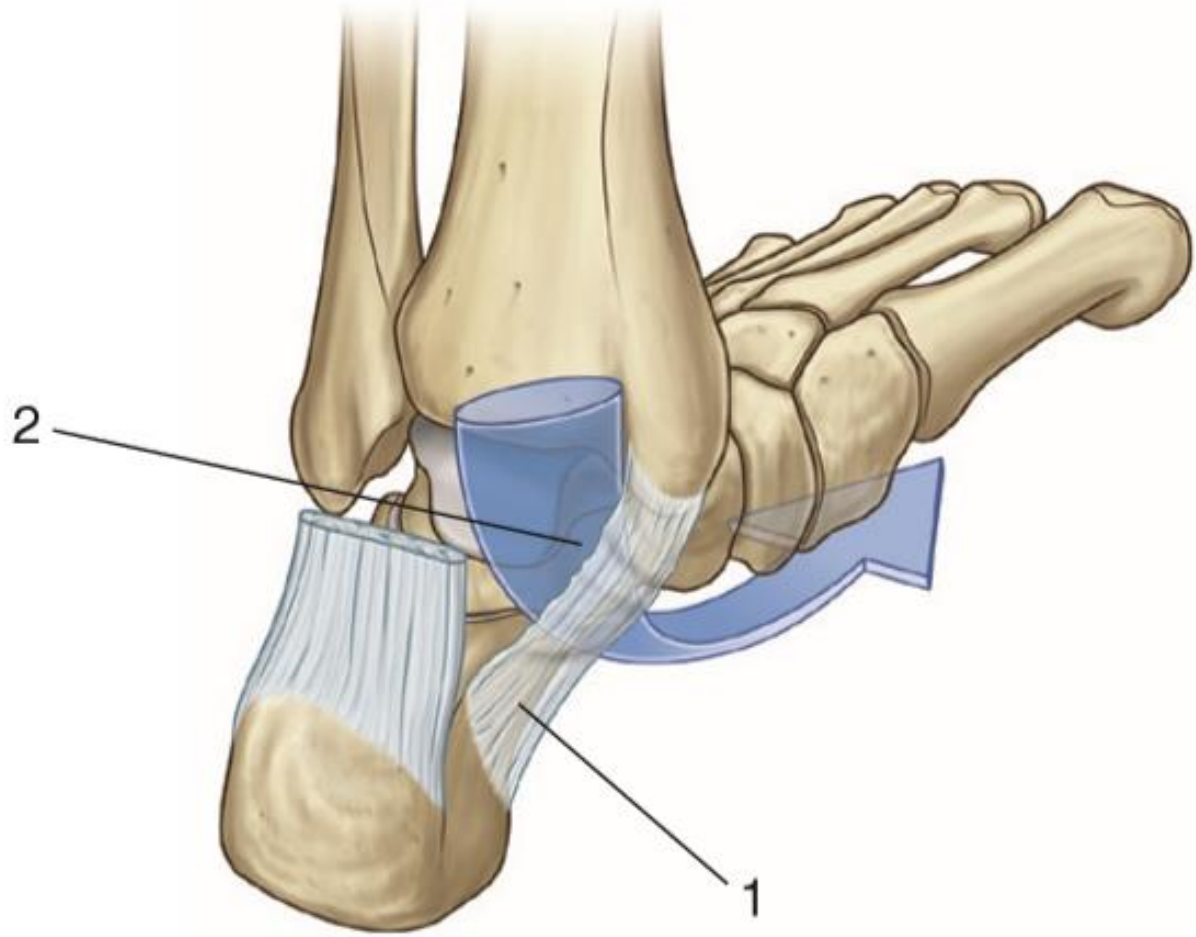


Flexor retinaculum

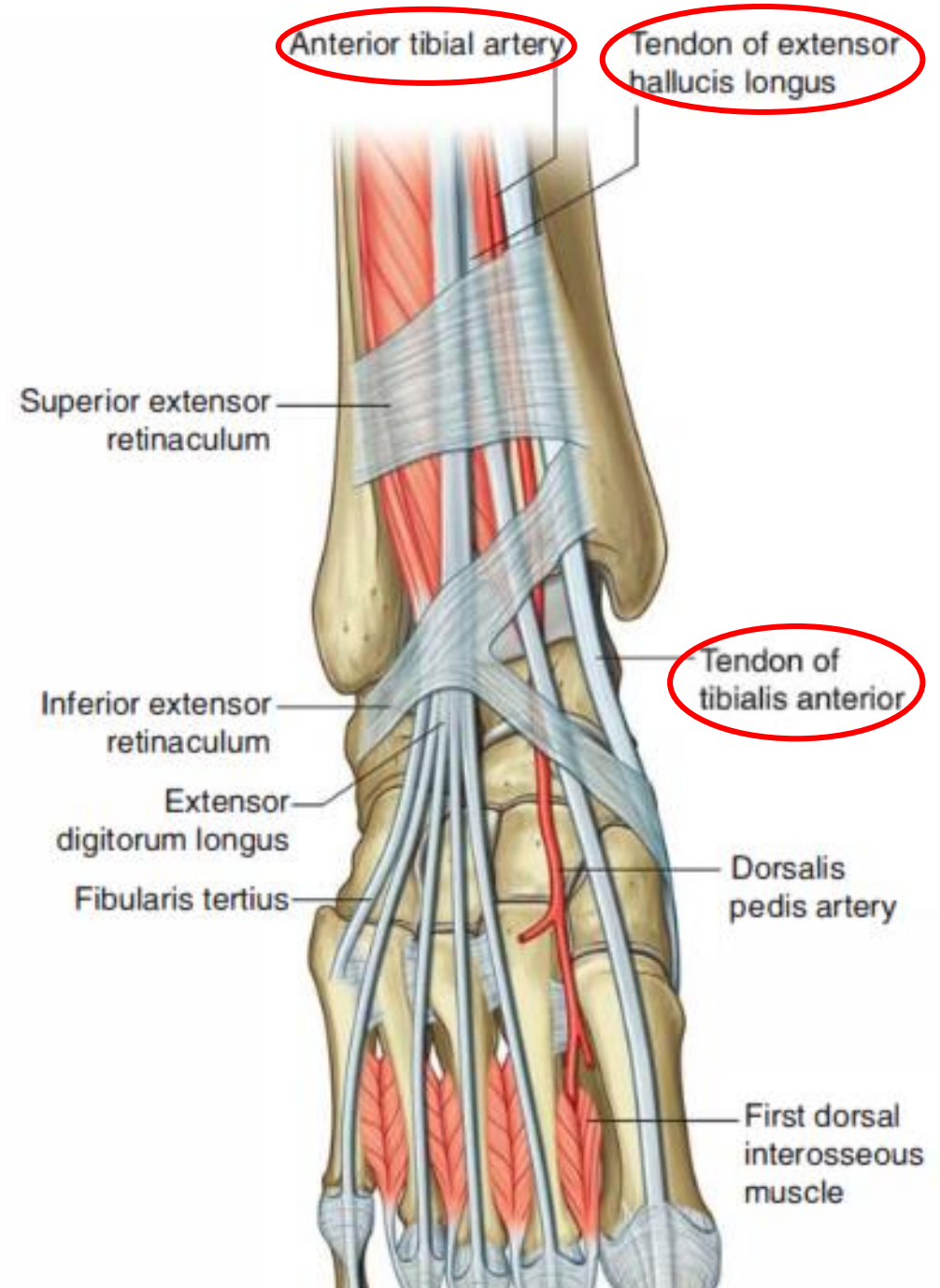


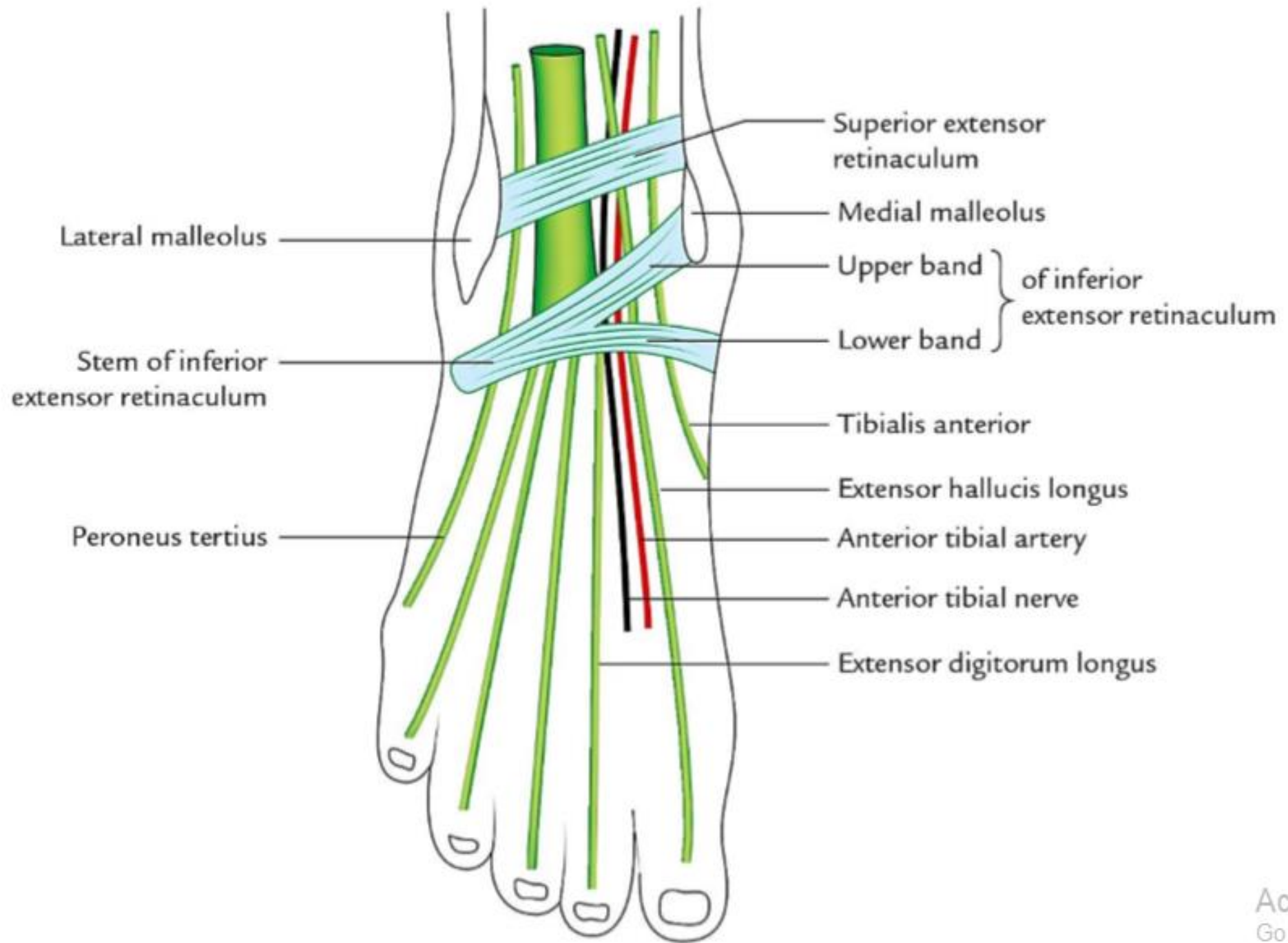
From anterior → posterior

- **Tom TP**
- **David FDL**
- **ANd post. tibial A, Tibial N**
- **Harry FHL**

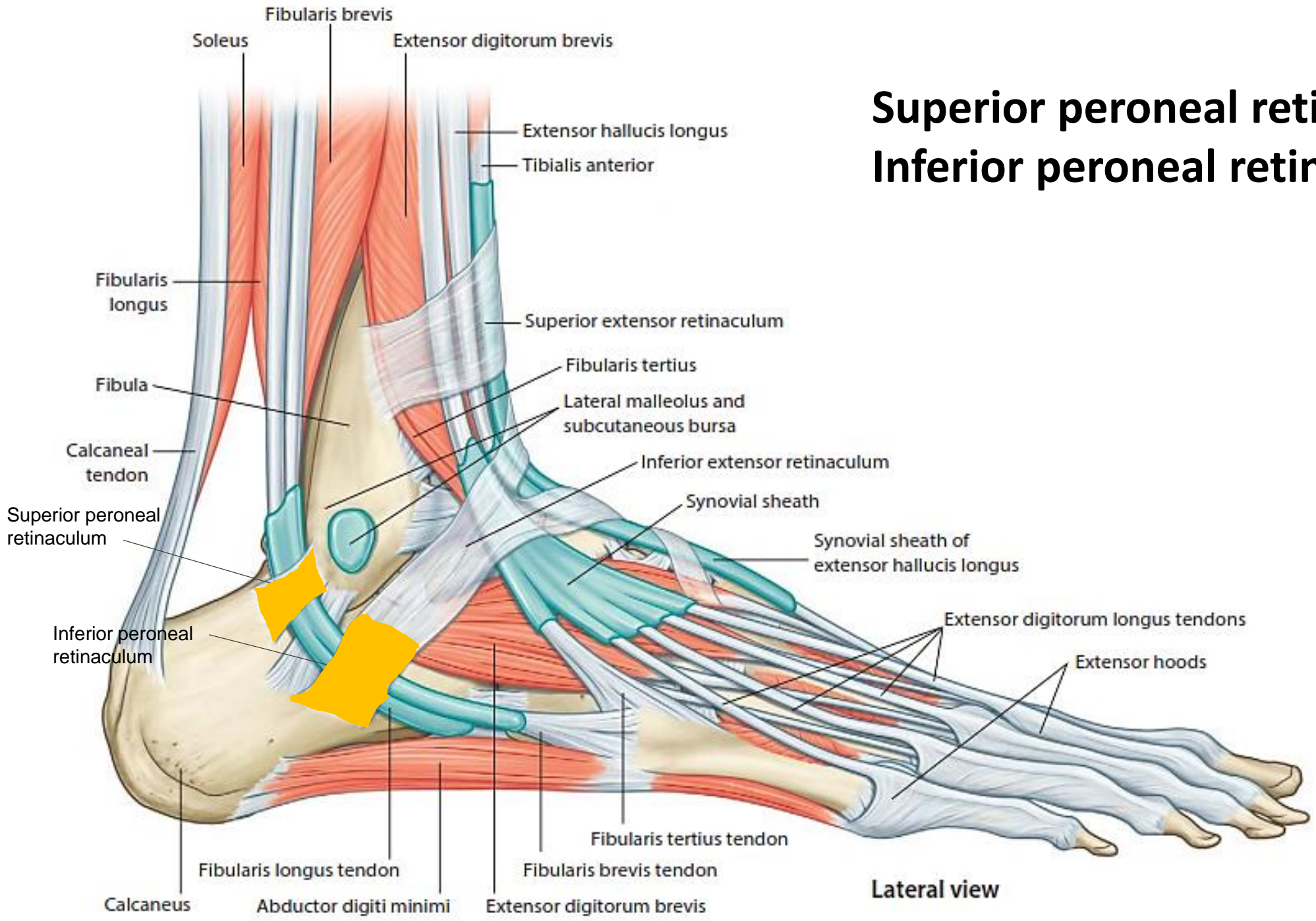


Extensor retinaculum





Superior peroneal retinaculum Inferior peroneal retinaculum



Lateral view

Palpation of dorsalis pedis & post. Tibial arts.

