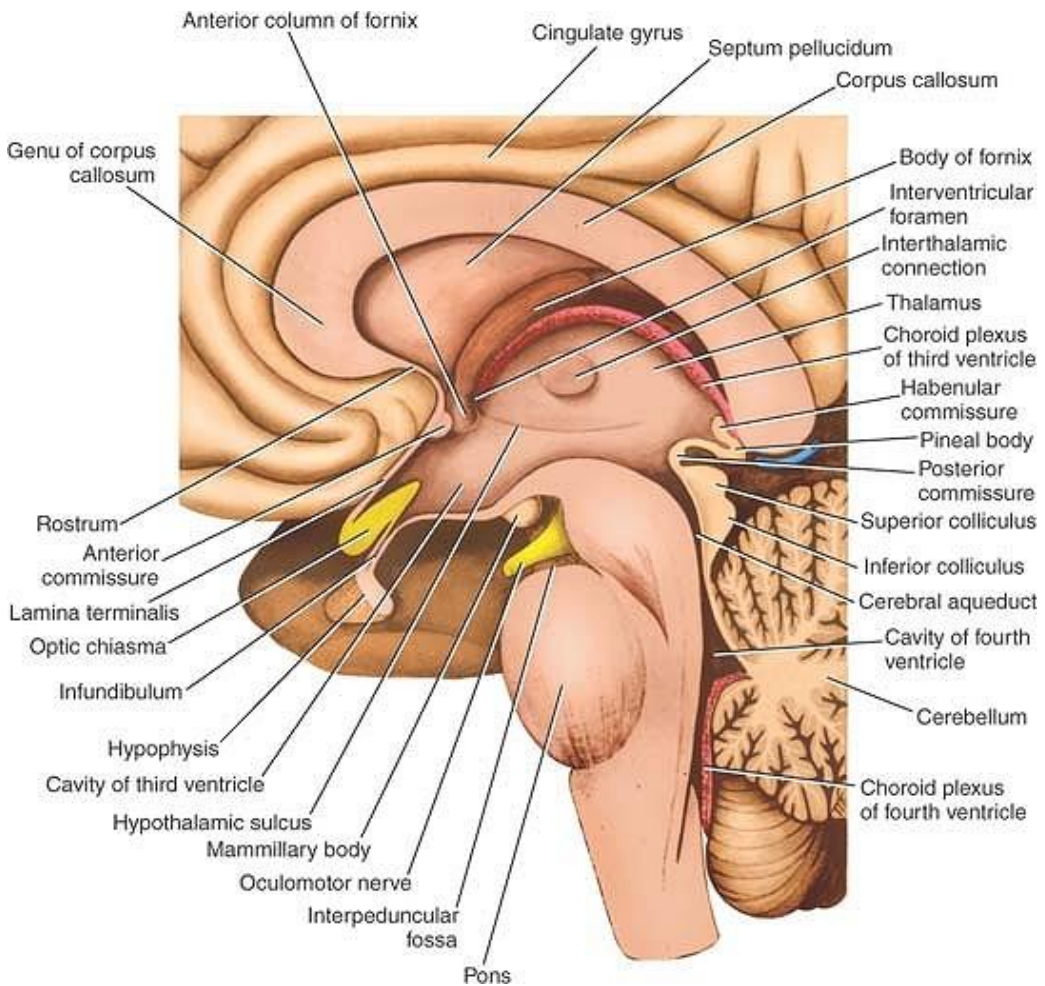
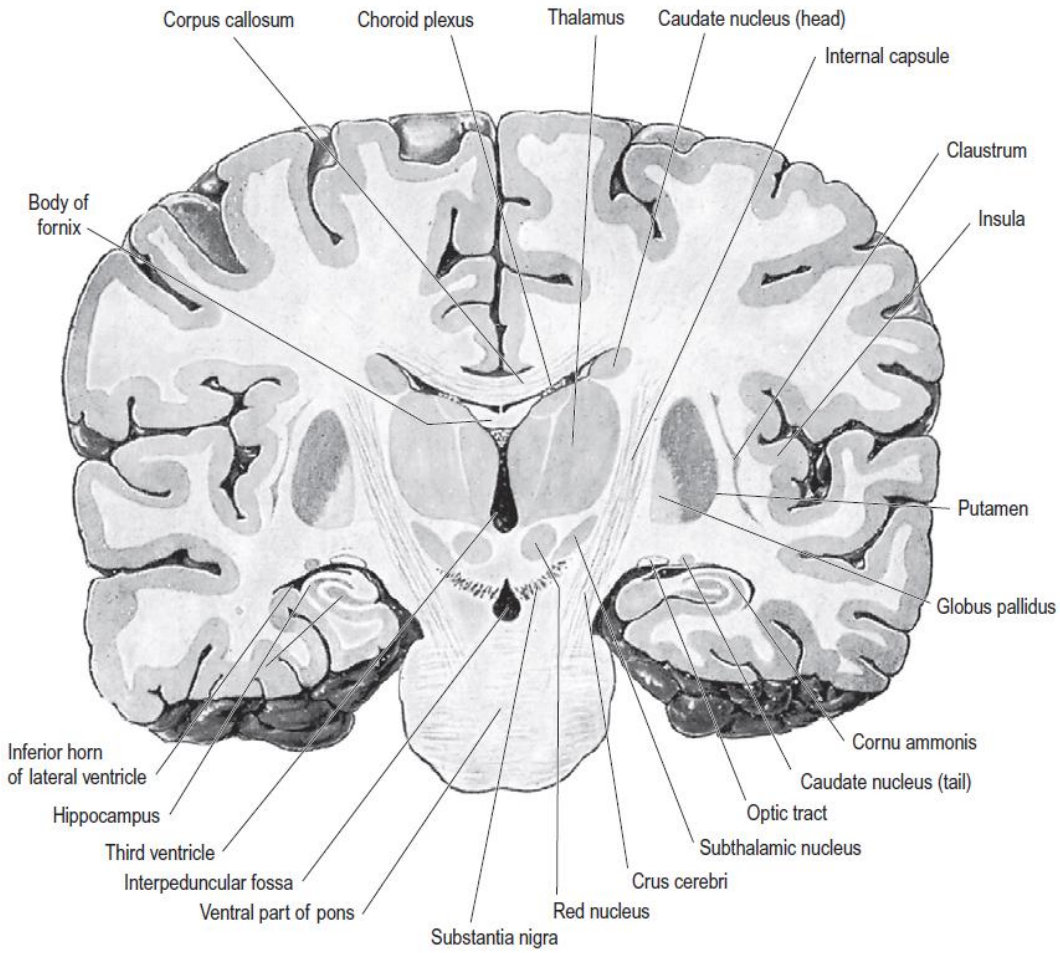
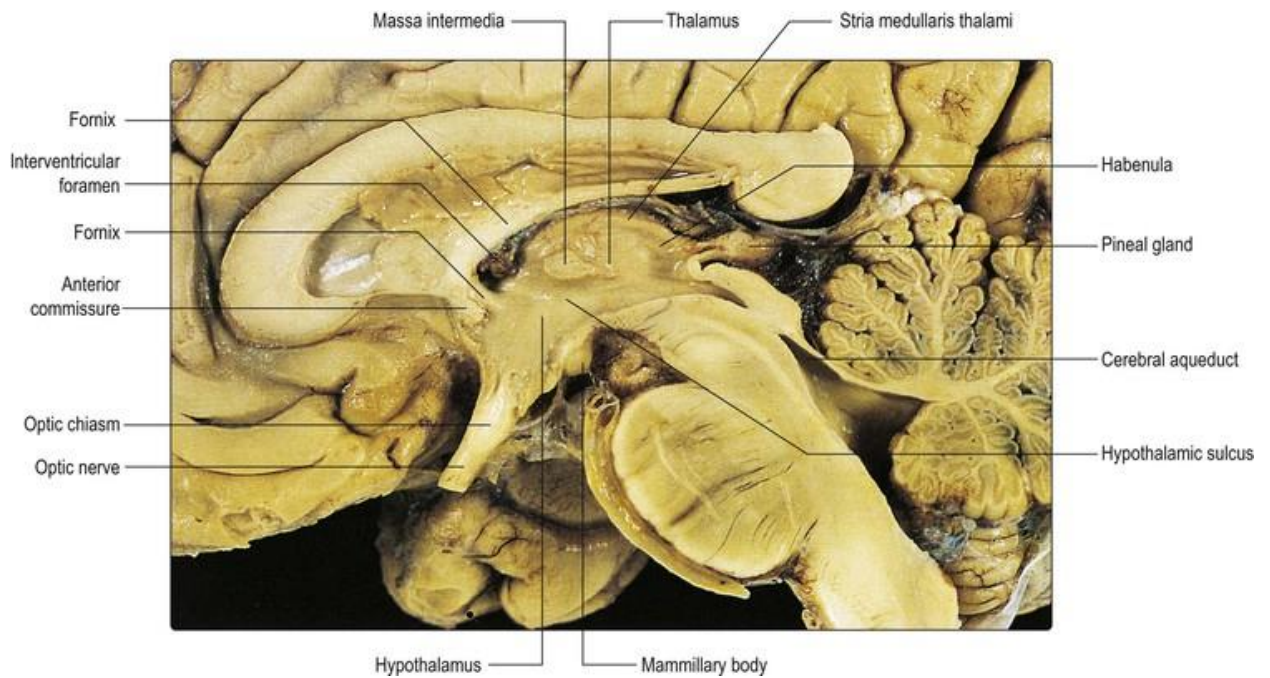
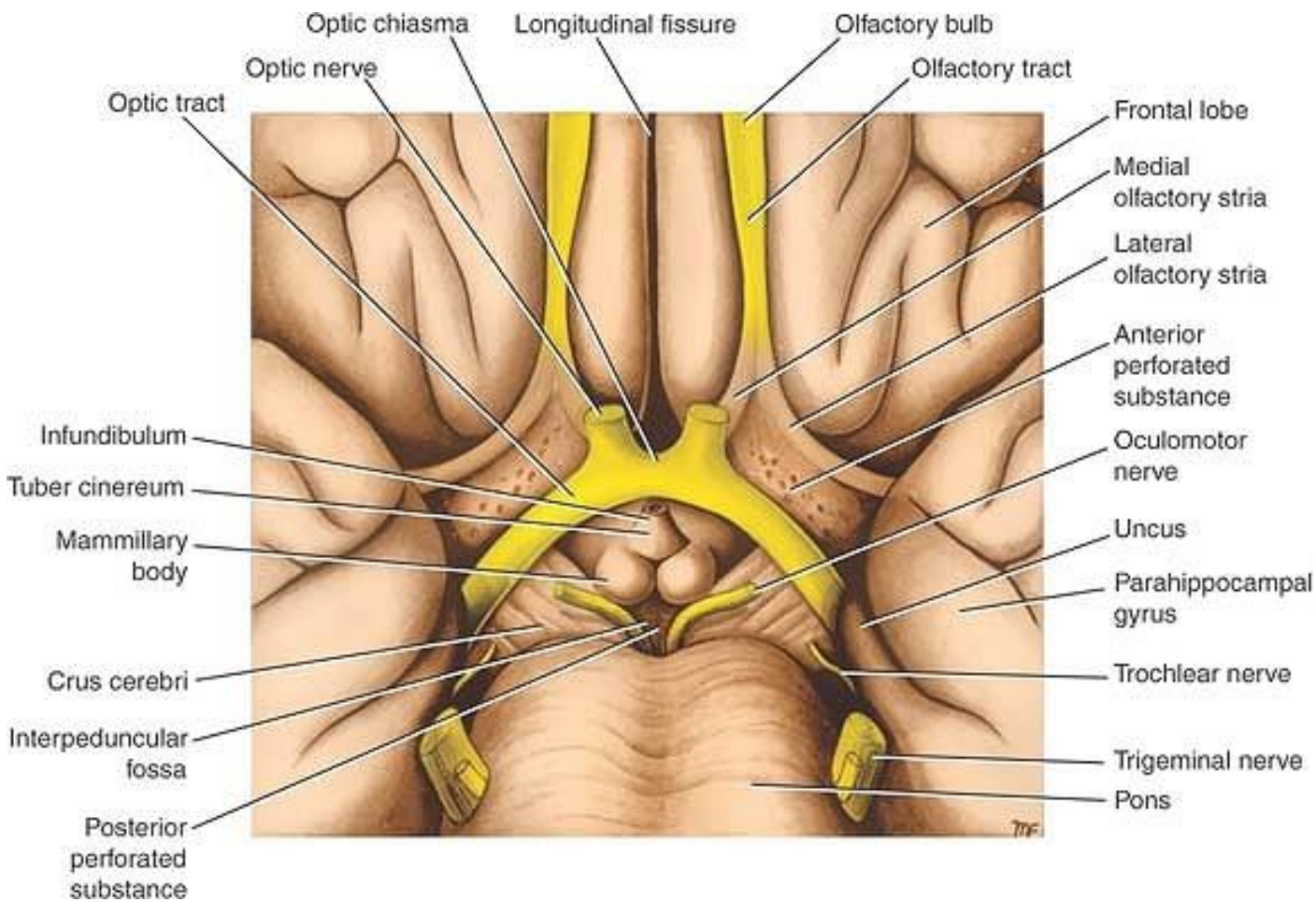


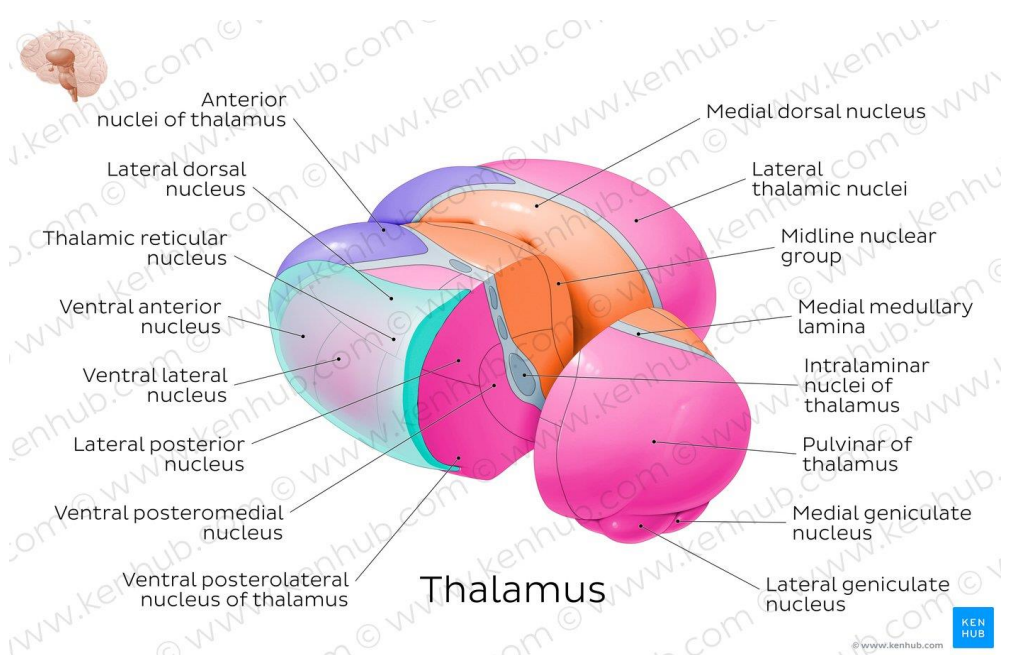
# The Diencephalon



Dr. Ali Mohsin

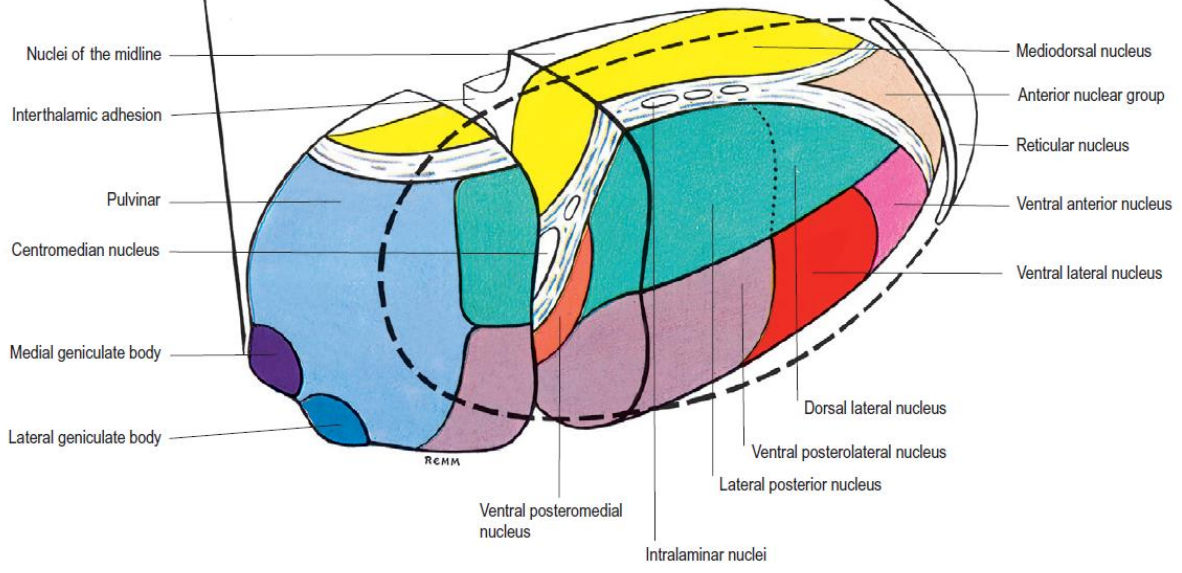
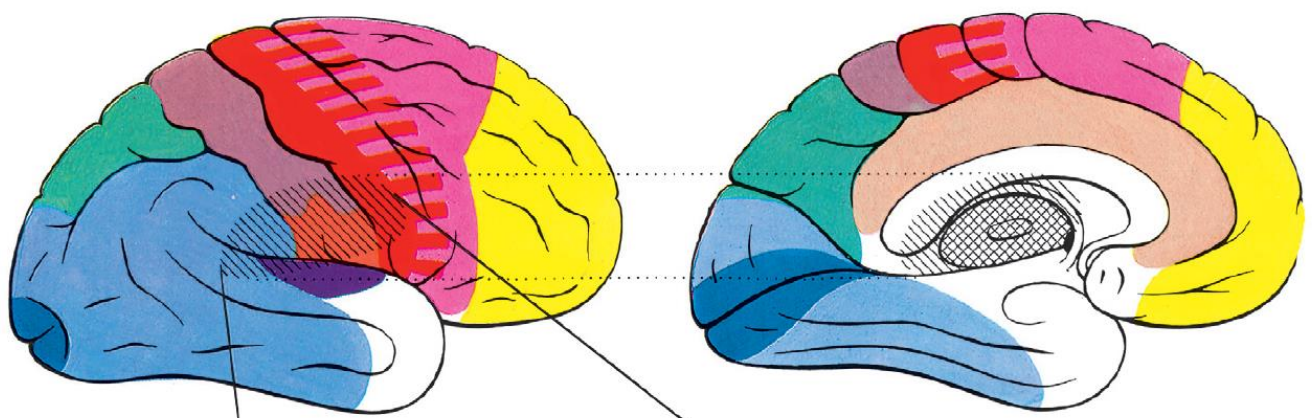




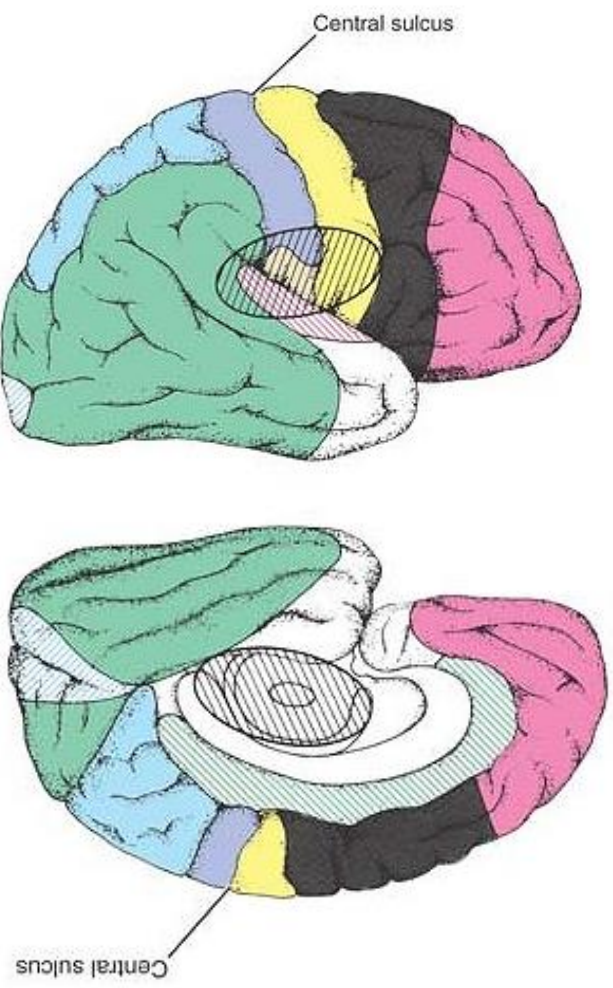
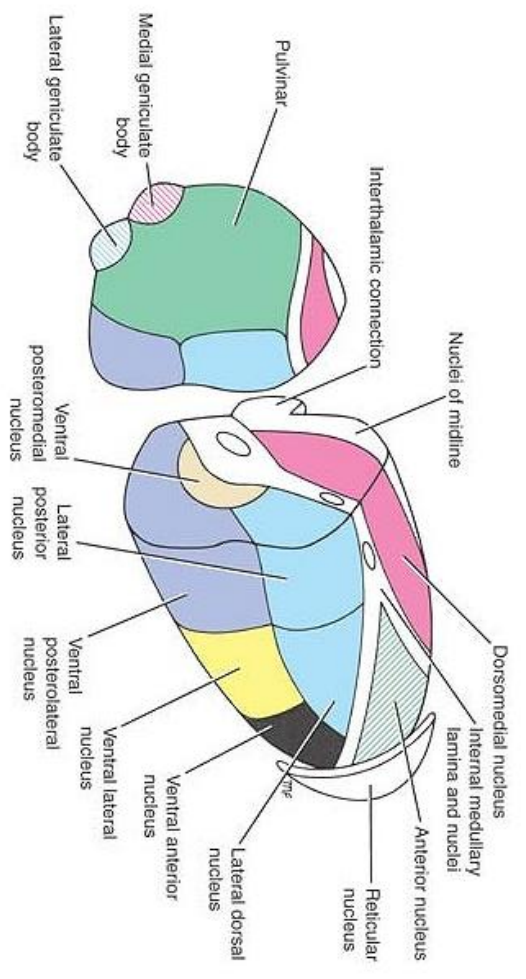
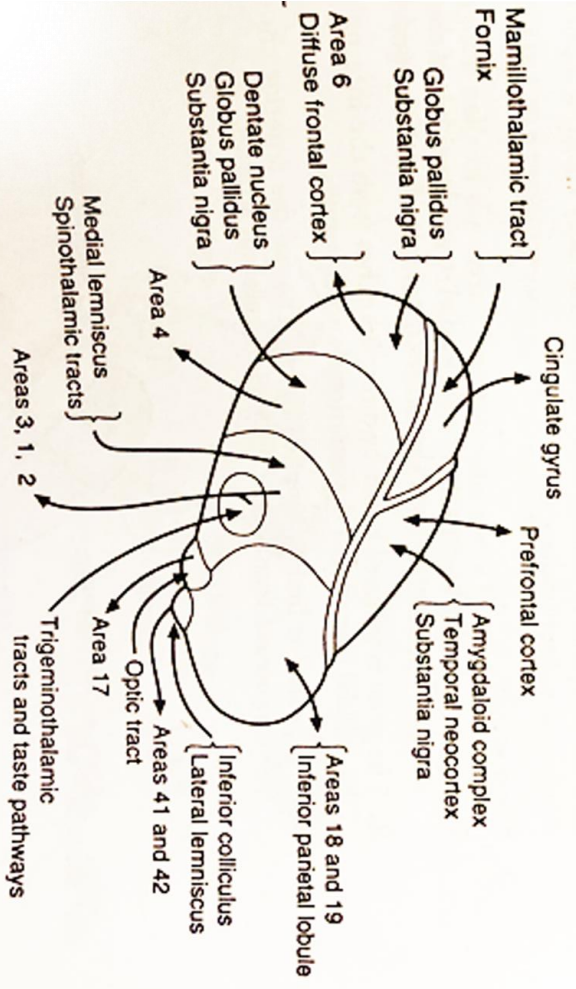
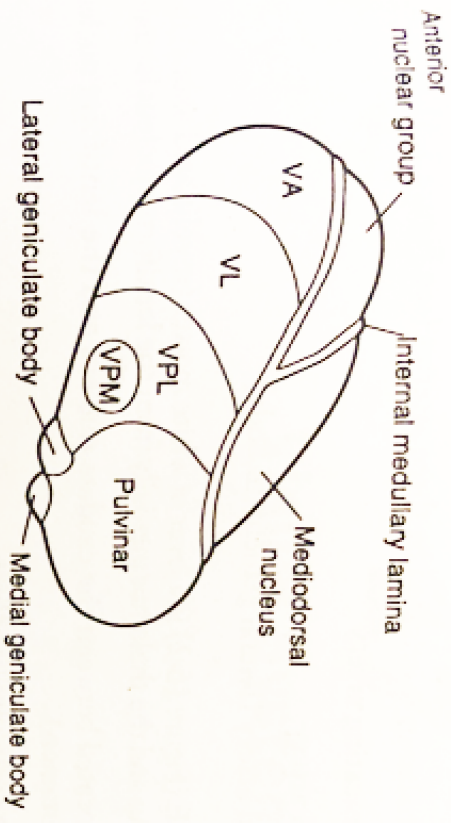


SUPEROLATERAL SURFACE OF HEMISPHERE

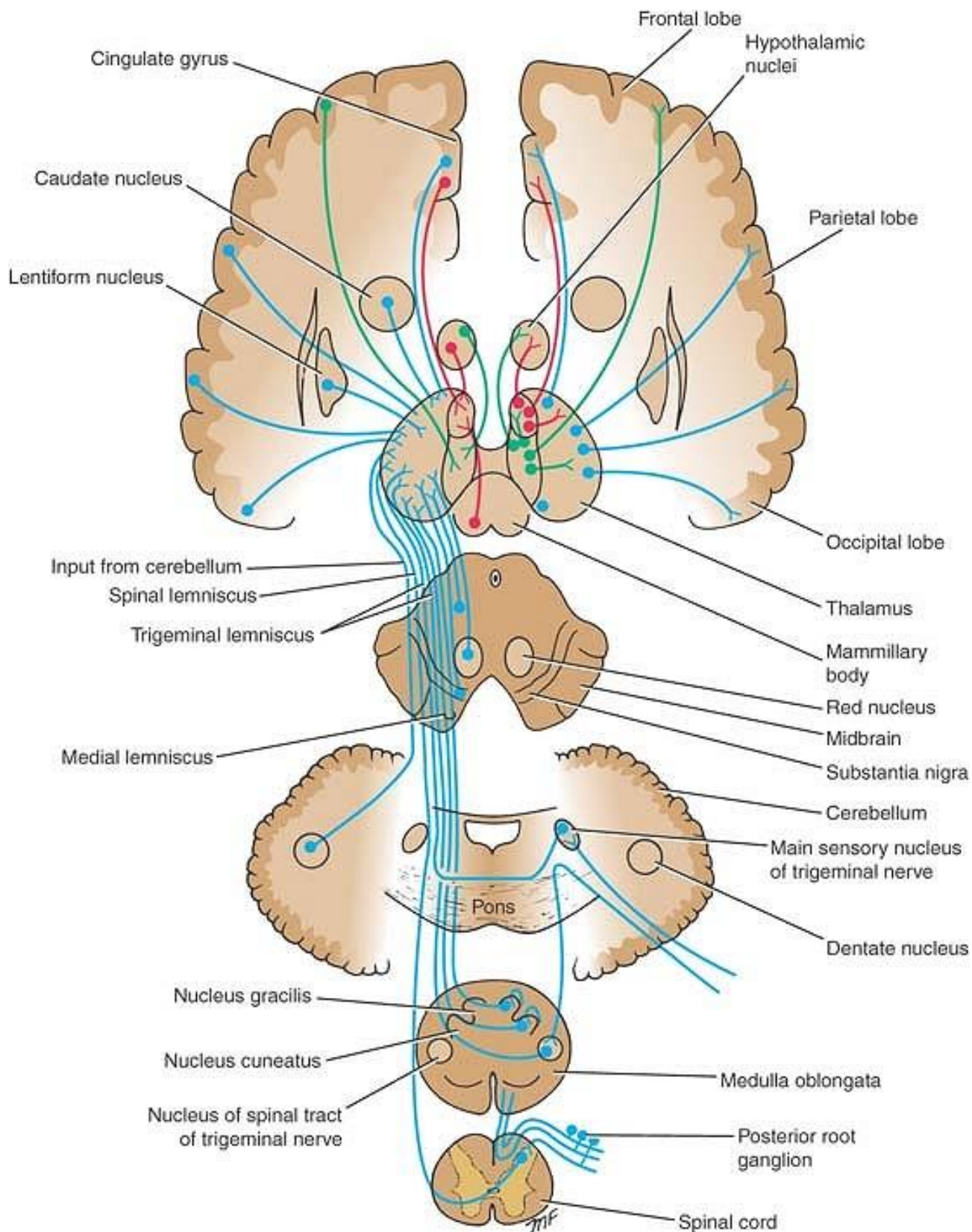
MEDIAL SURFACE OF HEMISPHERE



**Fig. 15.6** Main nuclear masses of the thalamus (viewed from the lateral aspect in the lower illustration) have been labelled and colour-coded, and the same colours have been used to indicate the areas of cerebral neocortex interconnected with these nuclei. The lack of colour in the centromedian, intralaminar and reticular nuclei and in restricted areas of the frontal and temporal lobes is not related to the colour code.

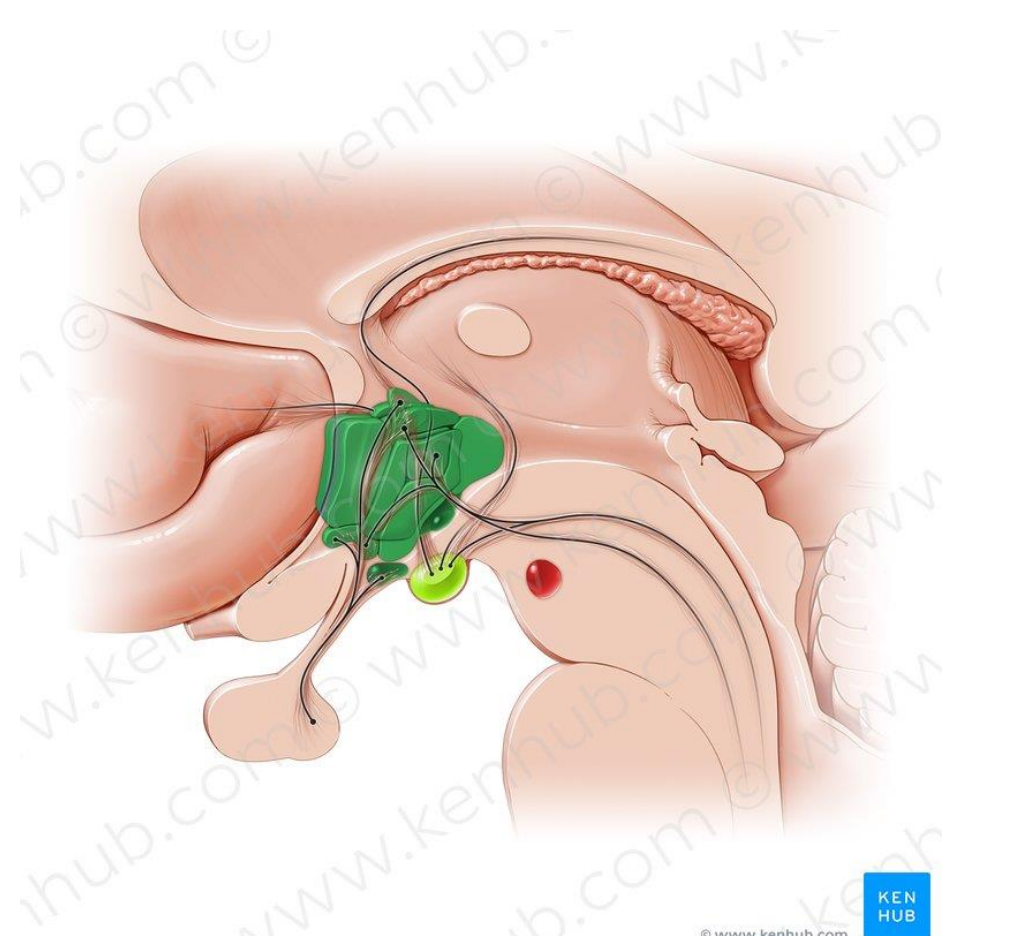
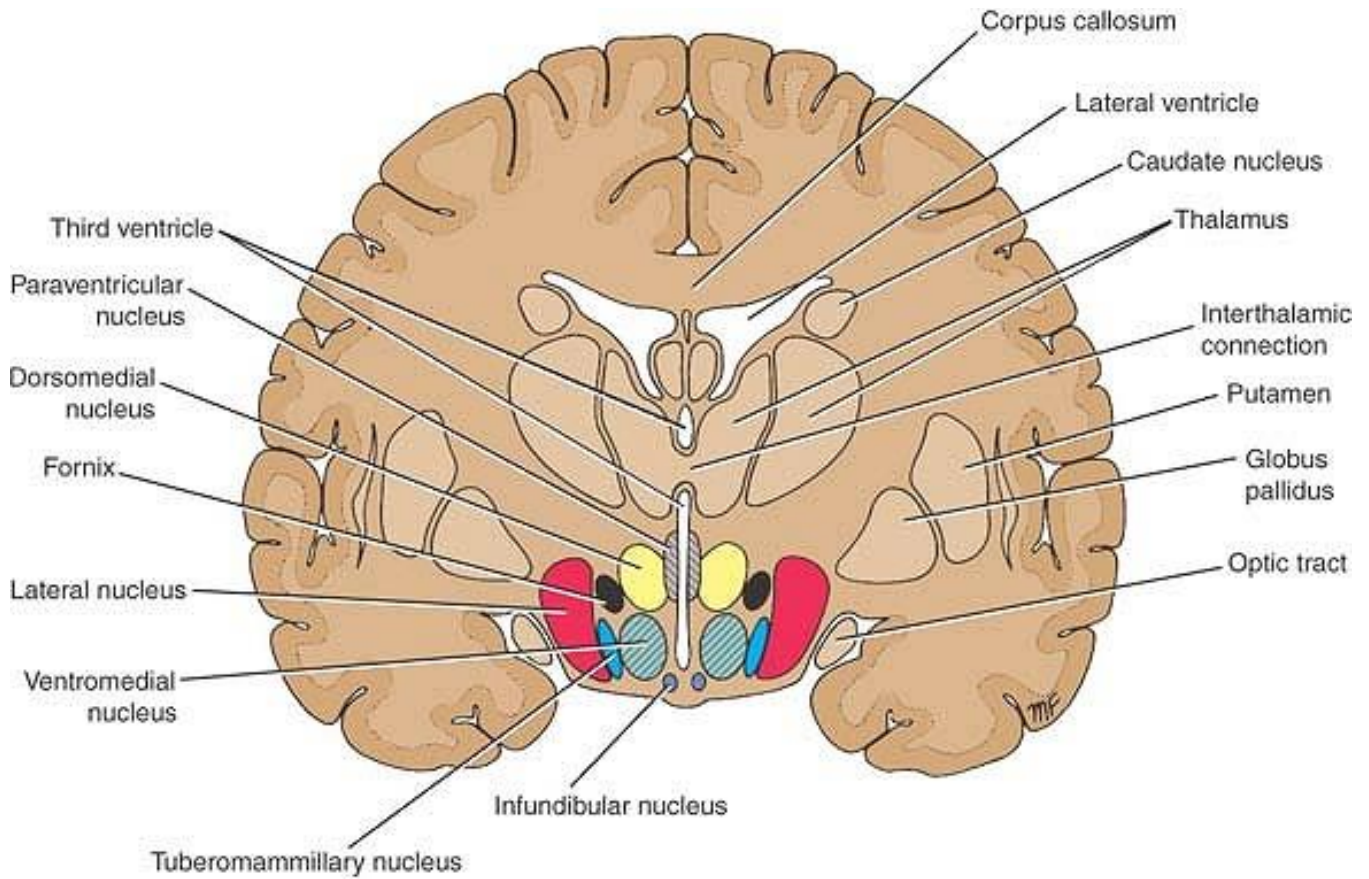




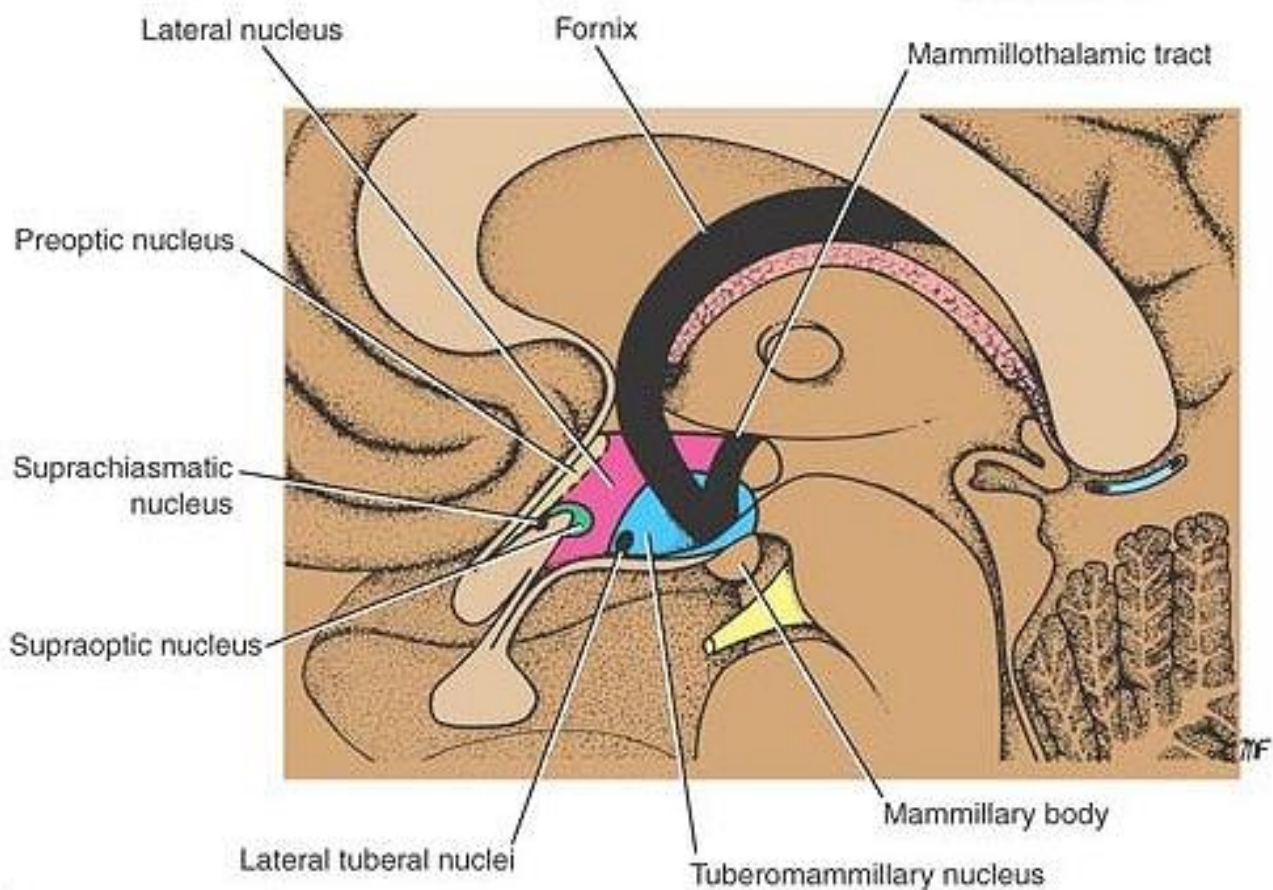
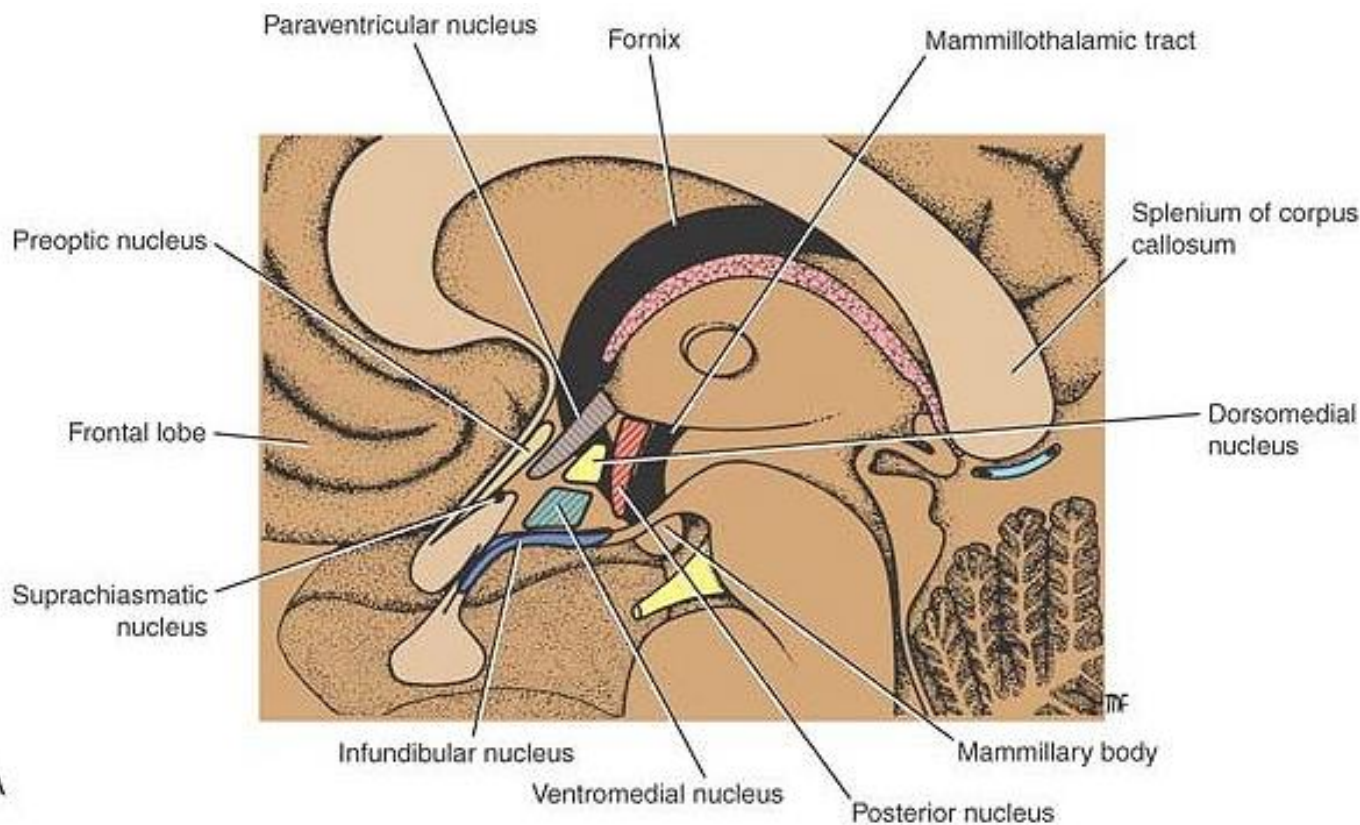


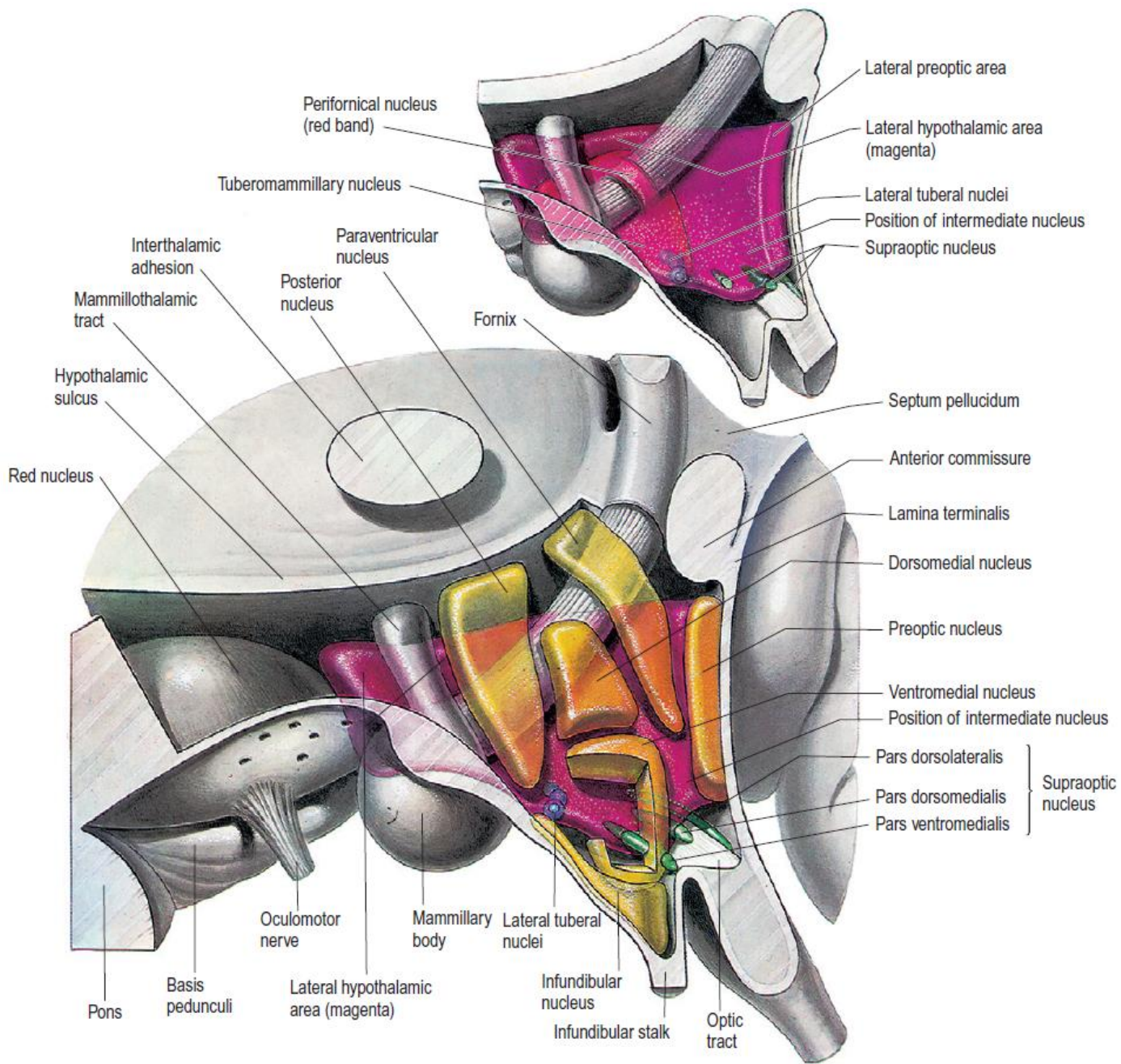
Afferent & Efferent pathways of the thalamus

# The Hypothalamus









Perifornical nucleus  
(red band)

Tuberomammillary nucleus

Interthalamic  
adhesion

Mammillothalamic  
tract

Hypothalamic  
sulcus

Red nucleus

Paraventricular  
nucleus

Posterior  
nucleus

Fornix

Lateral preoptic area

Lateral hypothalamic area  
(magenta)

Lateral tuberal nuclei

Position of intermediate nucleus

Supraoptic nucleus

Septum pellucidum

Anterior commissure

Lamina terminalis

Dorsomedial nucleus

Preoptic nucleus

Ventromedial nucleus

Position of intermediate nucleus

Pars dorsolateralis

Pars dorsomedialis

Pars ventromedialis

}  
Supraoptic  
nucleus

Oculomotor  
nerve

Mammillary  
body

Lateral tuberal  
nuclei

Infundibular  
nucleus

Infundibular  
stalk

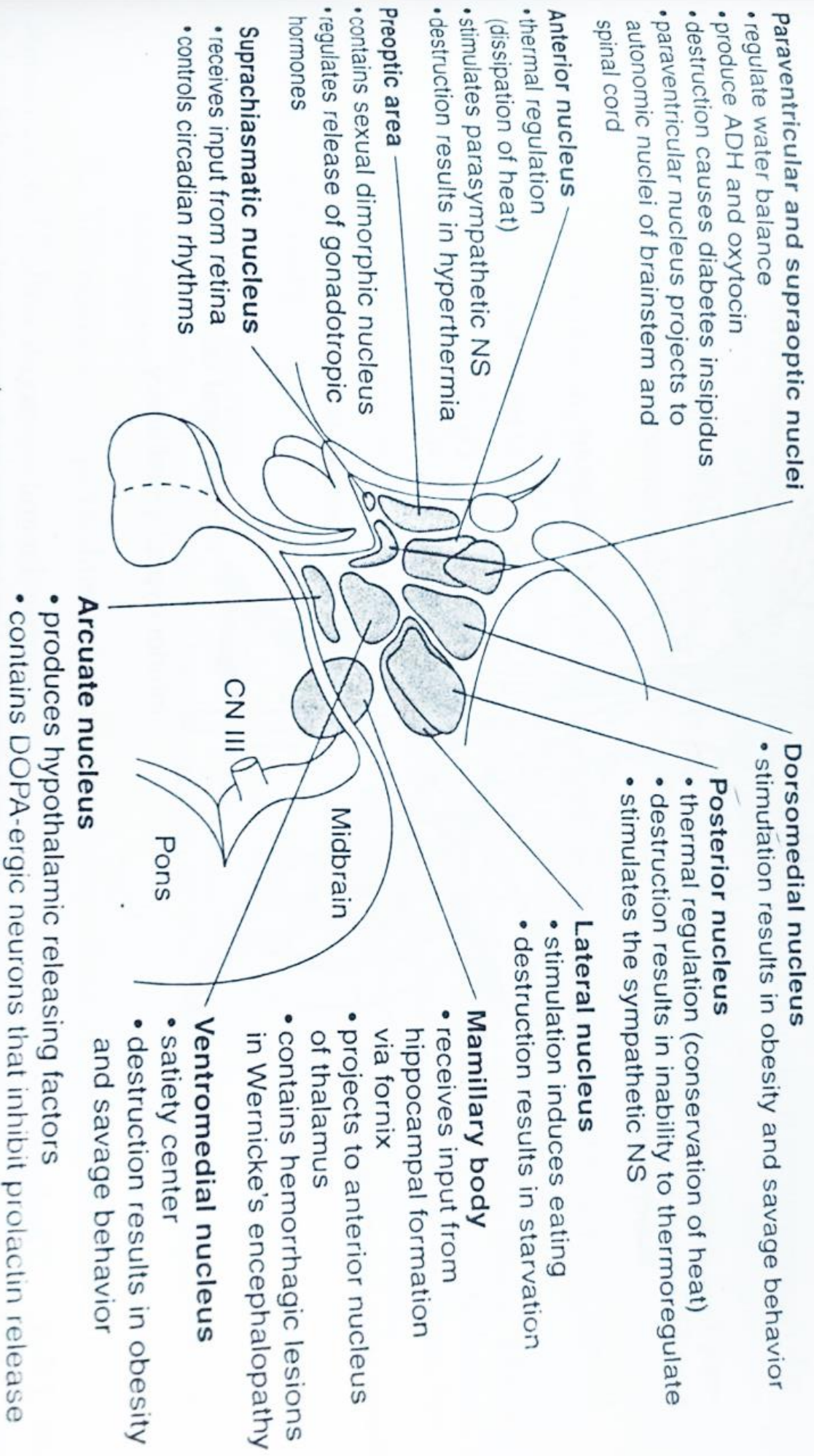
Optic tract

Pons

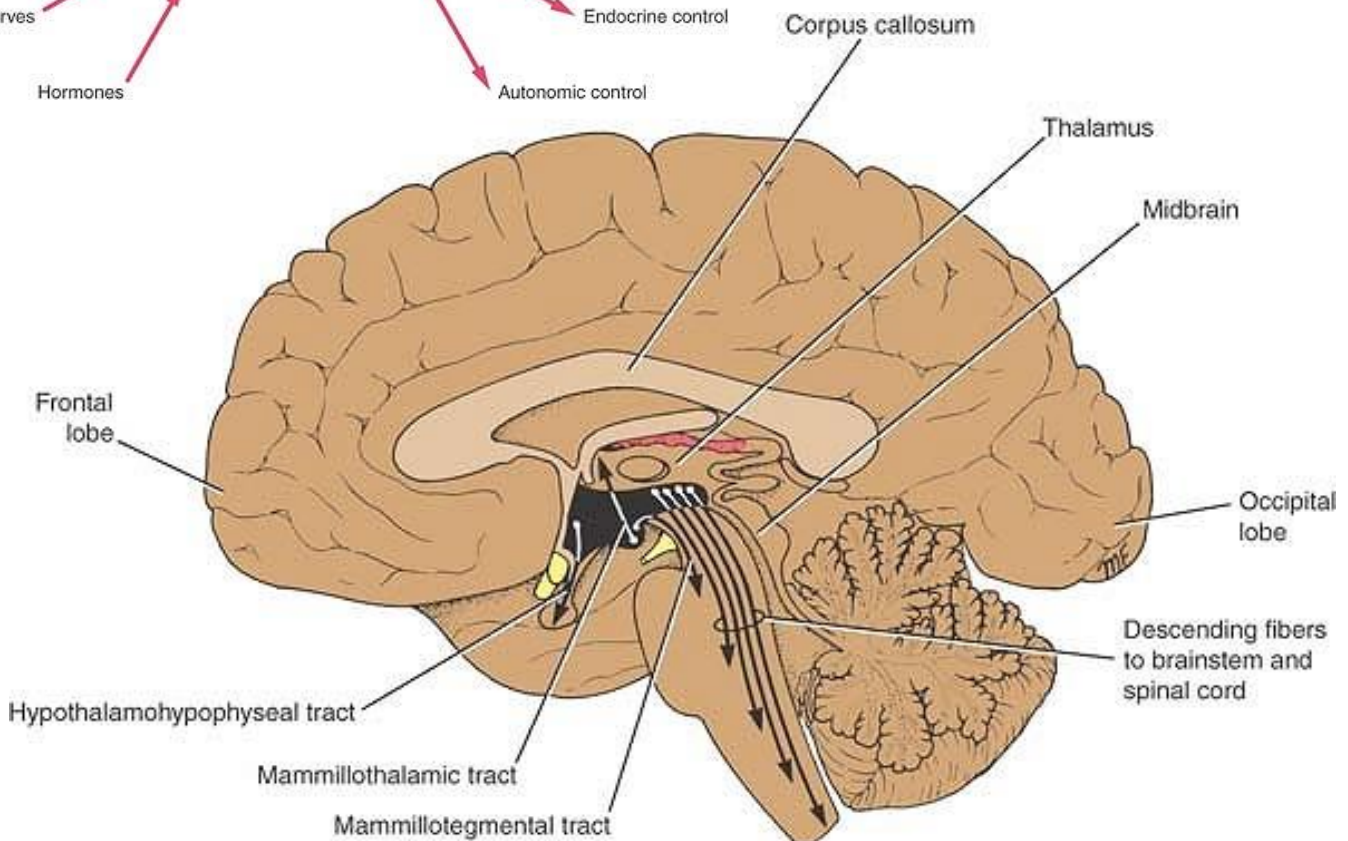
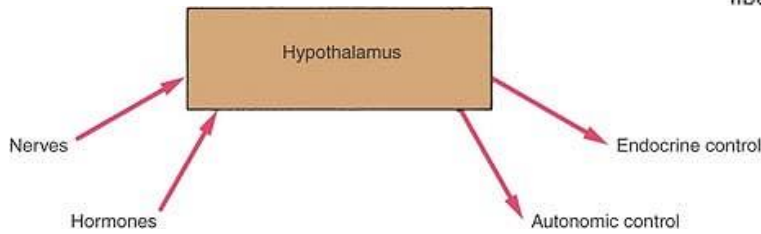
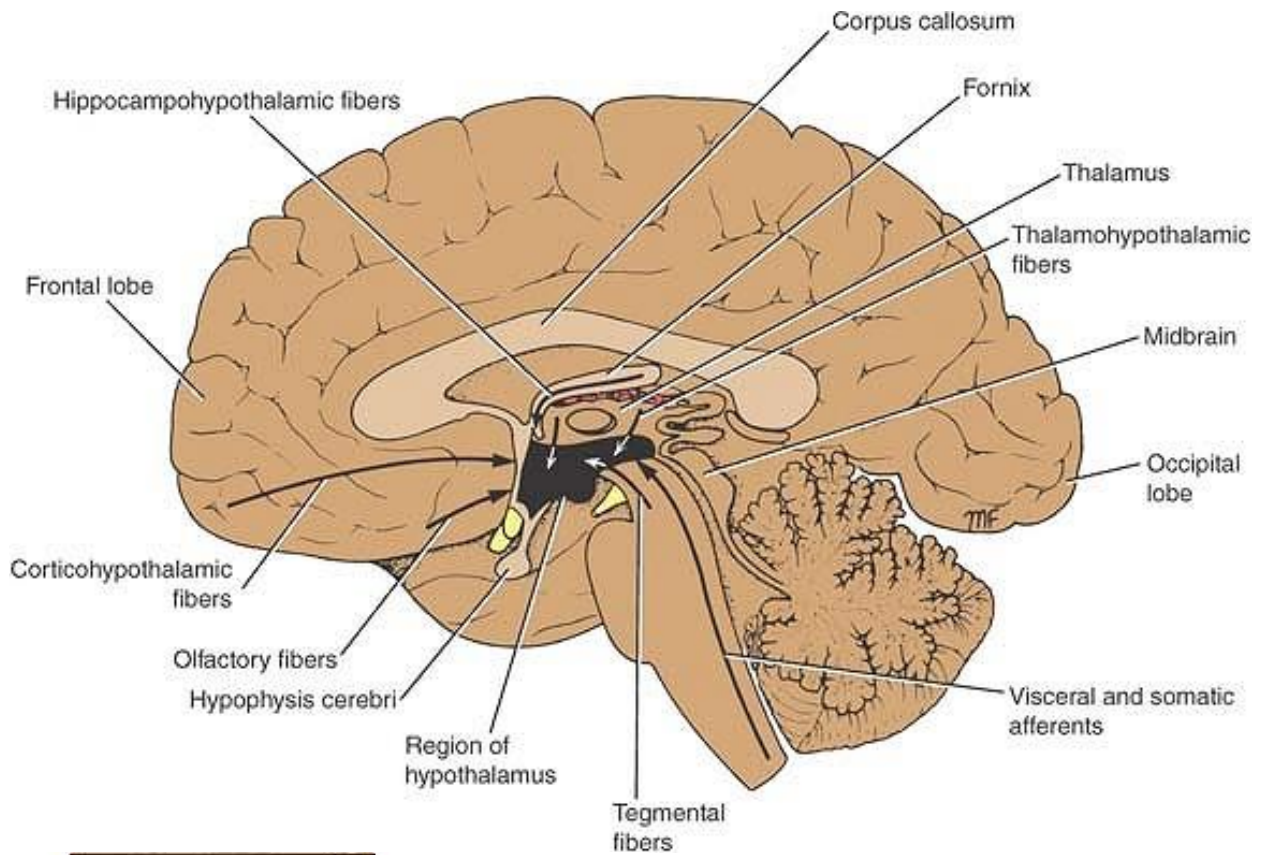
Basis  
pedunculi

Lateral hypothalamic  
area (magenta)





# Afferent & Efferent pathways of the thalamus





# The Pituitary Gland & its connections with the hypothalamus

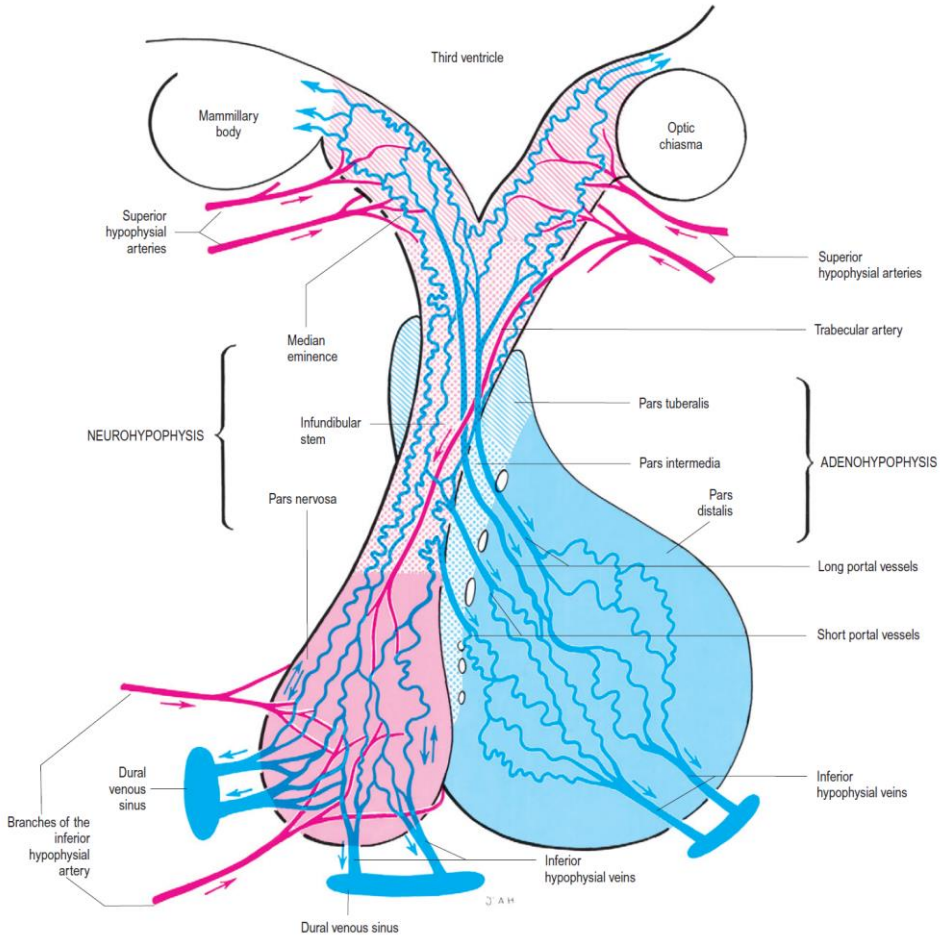


Fig. 15.17 Summary of the vasculature of the hypothalamic median eminence, infundibulum and other regimes of the hypophysis cerebri.

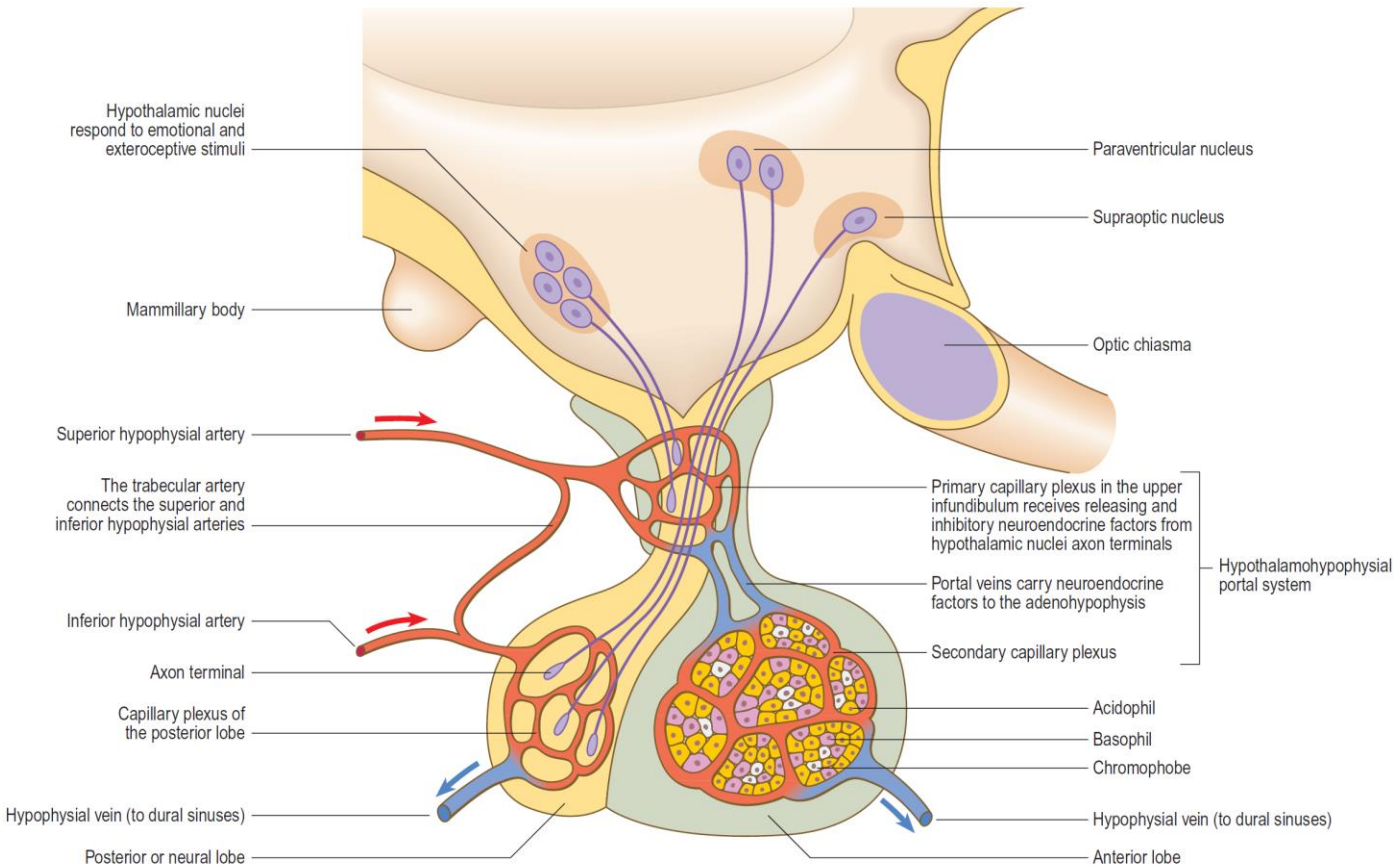


Fig. 15.14 Main systems controlling the endocrine secretory activities of the pituitary gland.

# The Epithalamus & its connections

