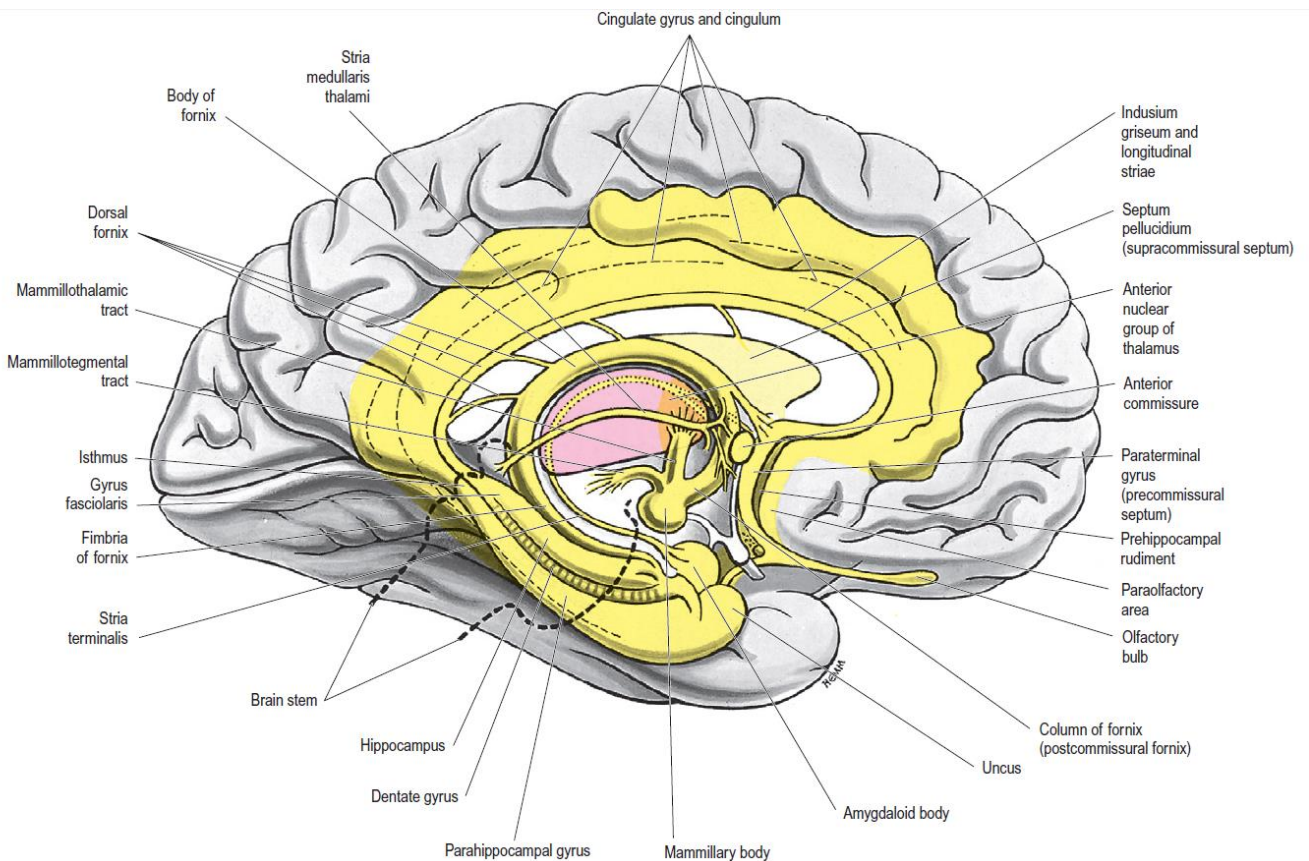


# Limbic System

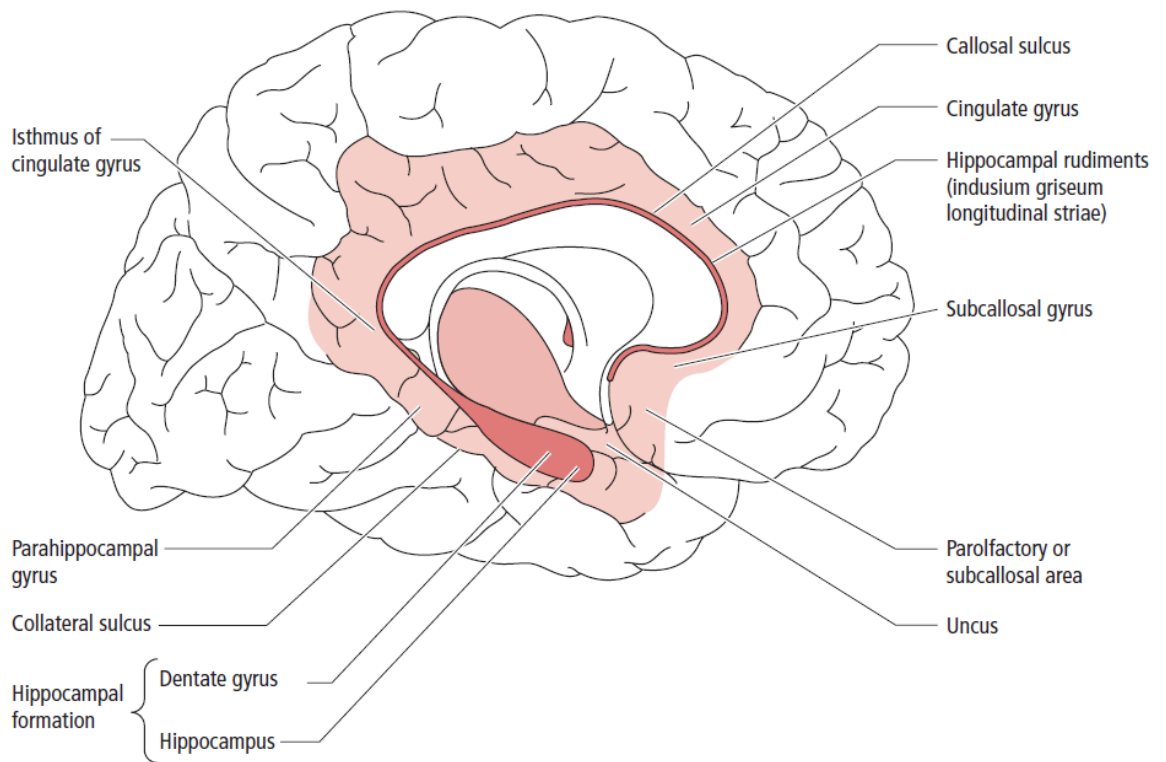
Dr. Ali Mohsin

## Components:

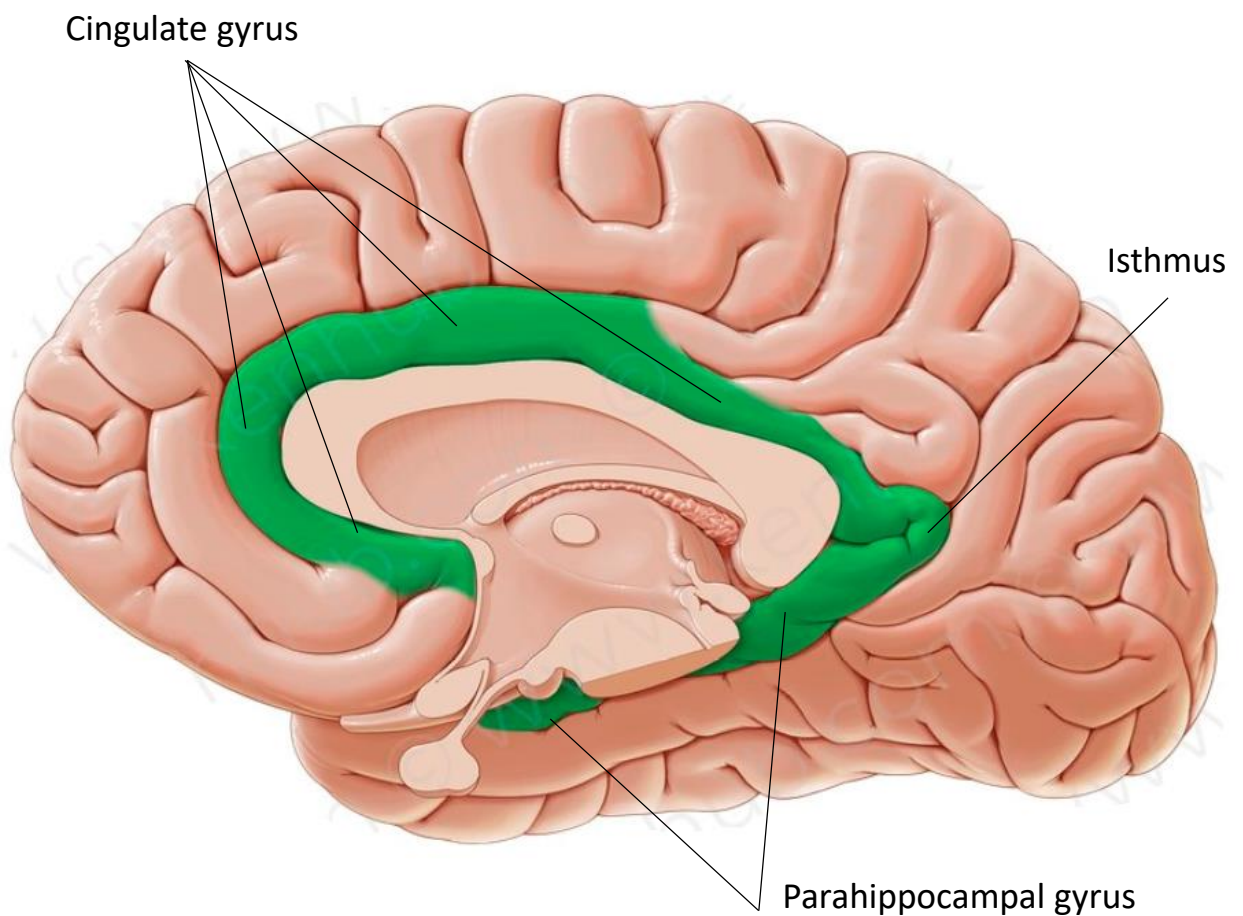
Structure	Components	Structure	Components
Cortex	Limbic lobe	Pathways	Alveus
	Cingulate gyrus		Fimbria
	Subcallosal gyrus	Fornix	
	Parahippocampal gyrus		Cingulum
	Hippocampal formation		
	Dentate gyrus		Mammillothalamic tract (mammillary fasciculus)
	Hippocampus proper (Ammon's horn, cornu ammonis)		
	Subiculum (subicular cortex)		Mammillotegmental tract
Nuclei	Amygdaloid body (nucleus, complex)		Stria terminalis
	Septal nuclei (nuclear complex)		Stria medullaris thalami
	Some thalamic nuclei		
	Some hypothalamic nuclei		



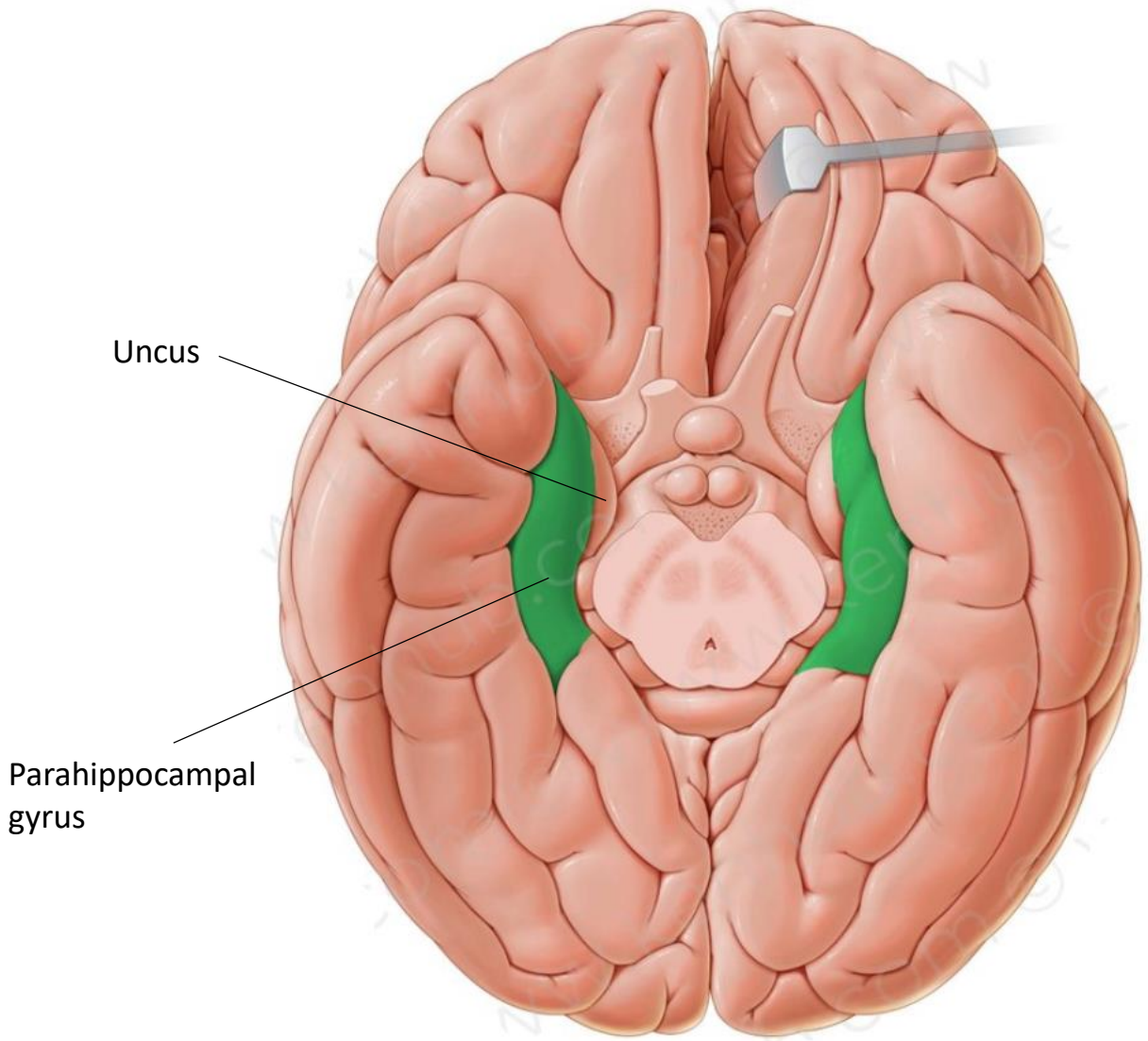
**Fig. 16.22** Medial aspect of the left cerebral hemisphere demonstrating some limbic structures (yellow). The anterior nuclear group of the thalamus is coloured orange, and the rest of the thalamus is magenta. The approximate position of the brain stem is outlined in a heavy interrupted line.



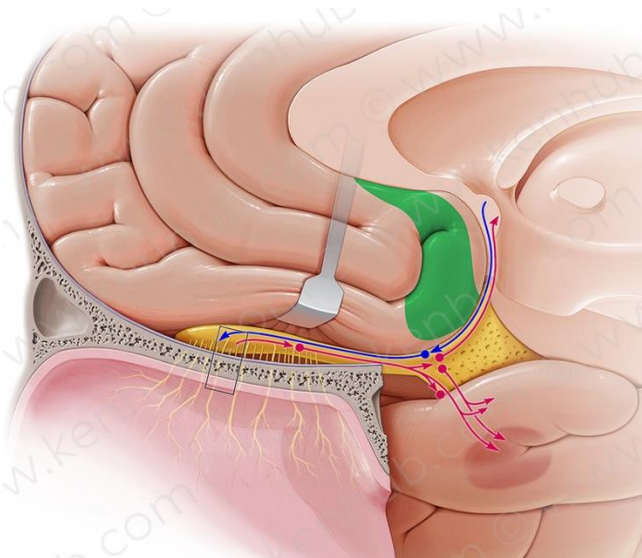
**Figure 20.1** • The cortical structures of the limbic lobe: the subcallosal, cingulate, and parahippocampal gyri and the hippocampal formation.



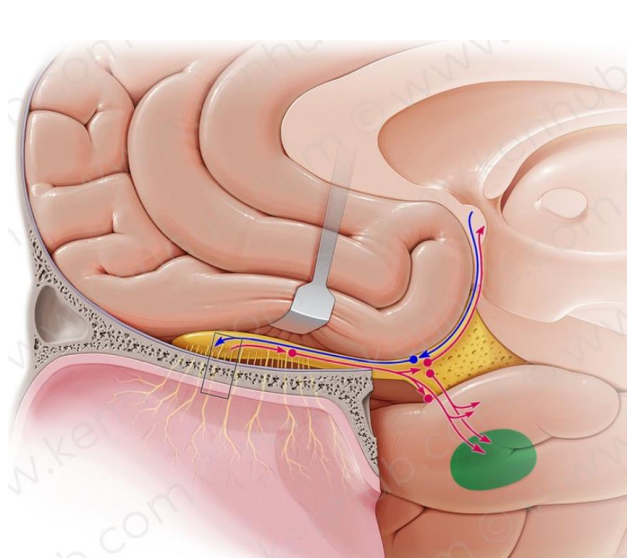




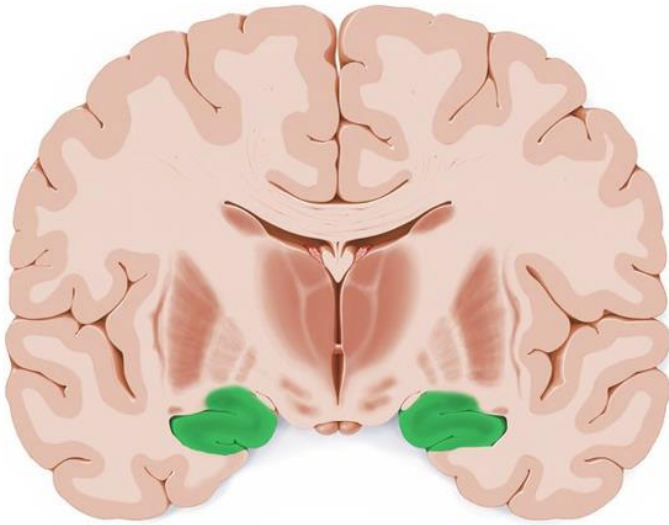
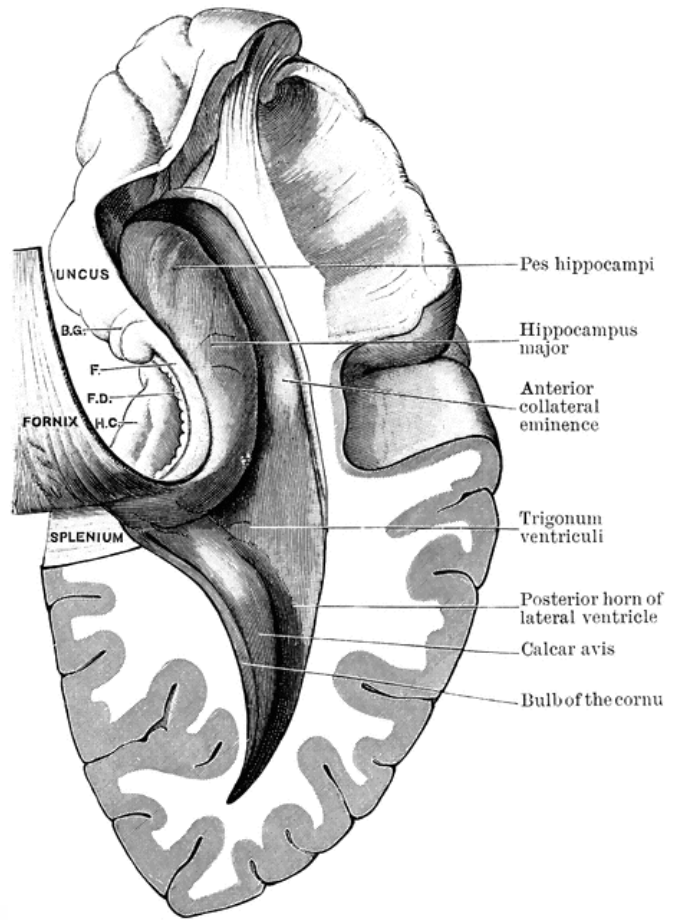
Subcallosal area



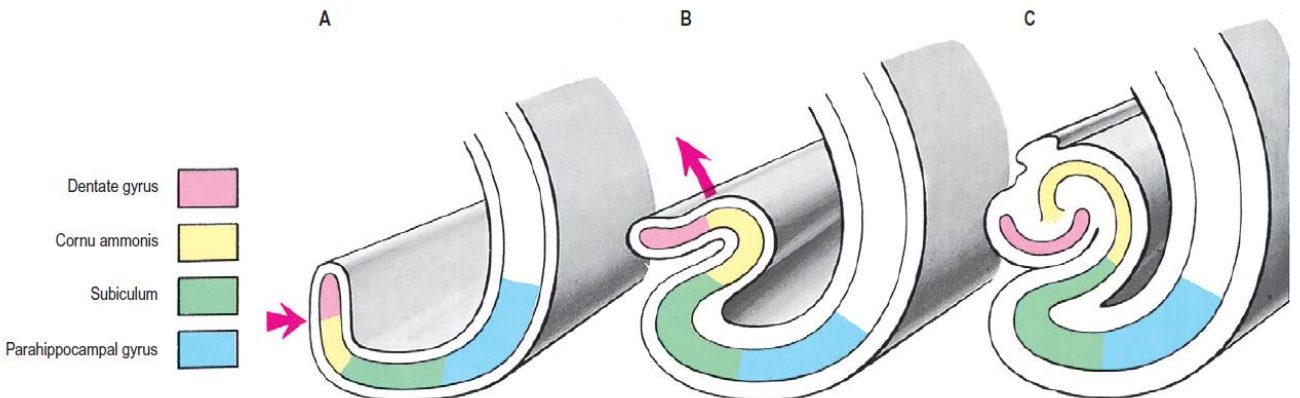
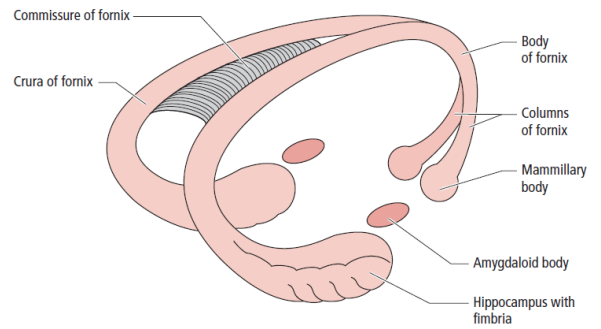
Amygdaloid body



# Hippocampus



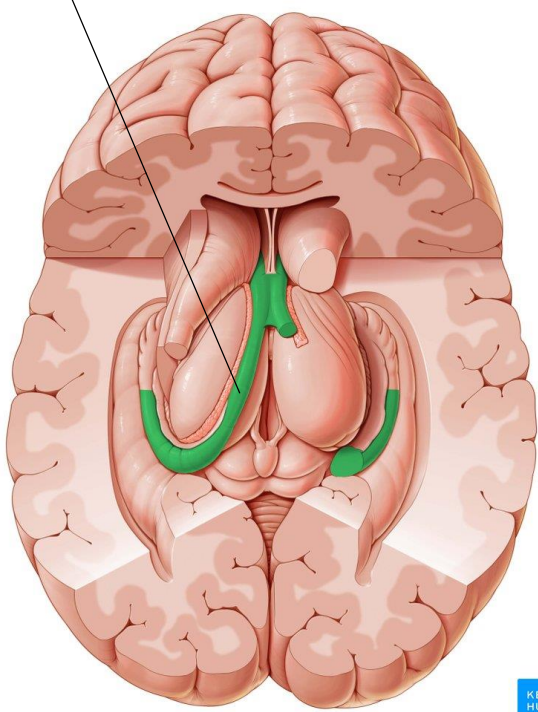
Hippocampus in coronal section



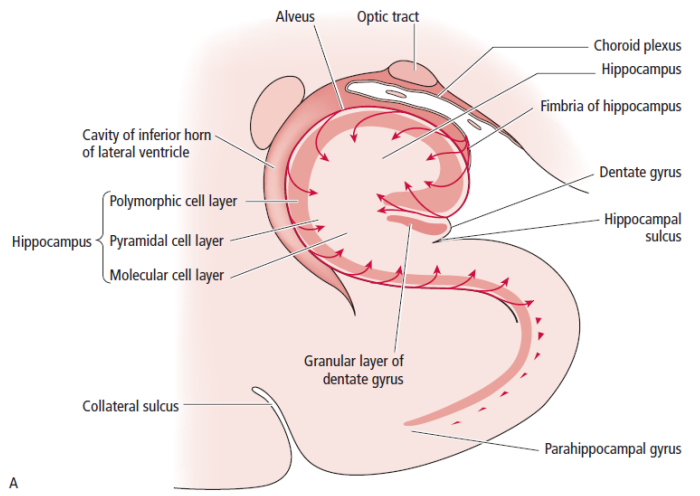
**Fig. 16.26** A–C, Coronal sections of the temporal lobe and inferior horn of the lateral ventricle illustrating the hippocampus and related structures. This series of diagrams is intended to assist in understanding the relative positions of the dentate gyrus, cornu ammonis, subiculum and parahippocampal gyrus in the floor of the inferior horn.



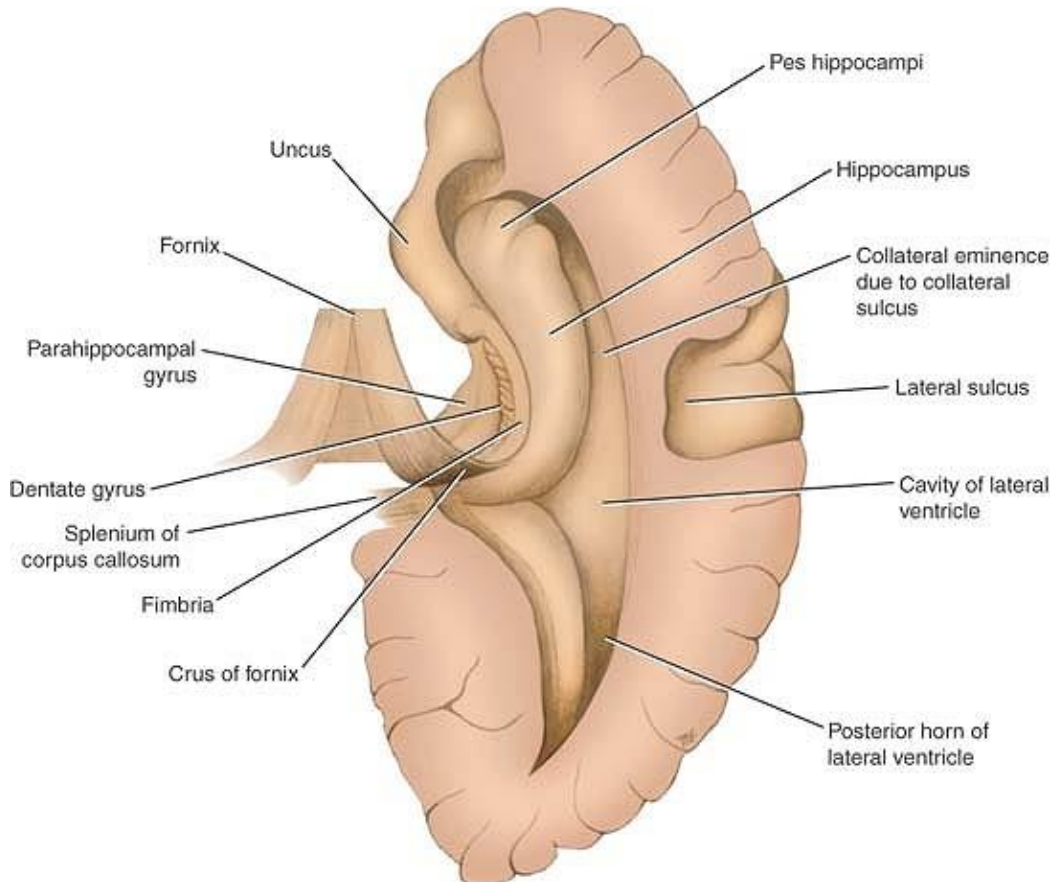
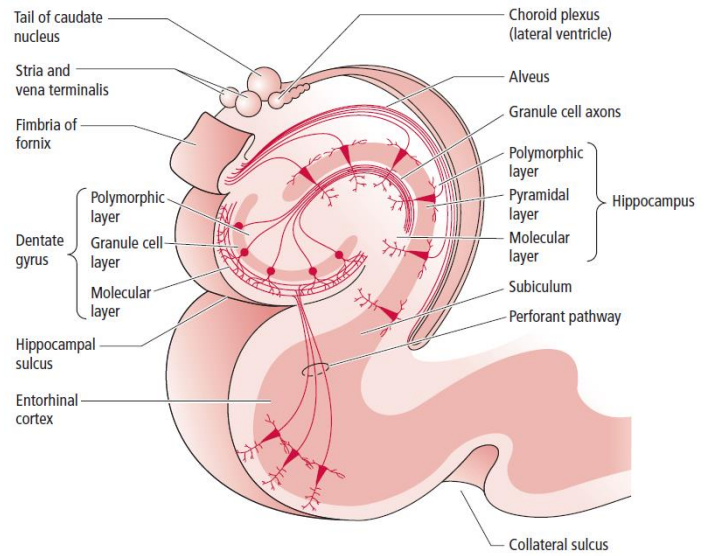
# Fornix



KEN HUB  
© www.kenhub.com



A



# The Papez Circuite

