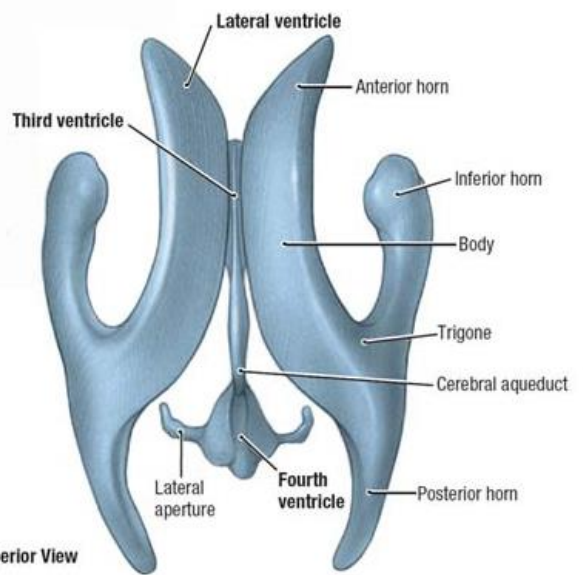
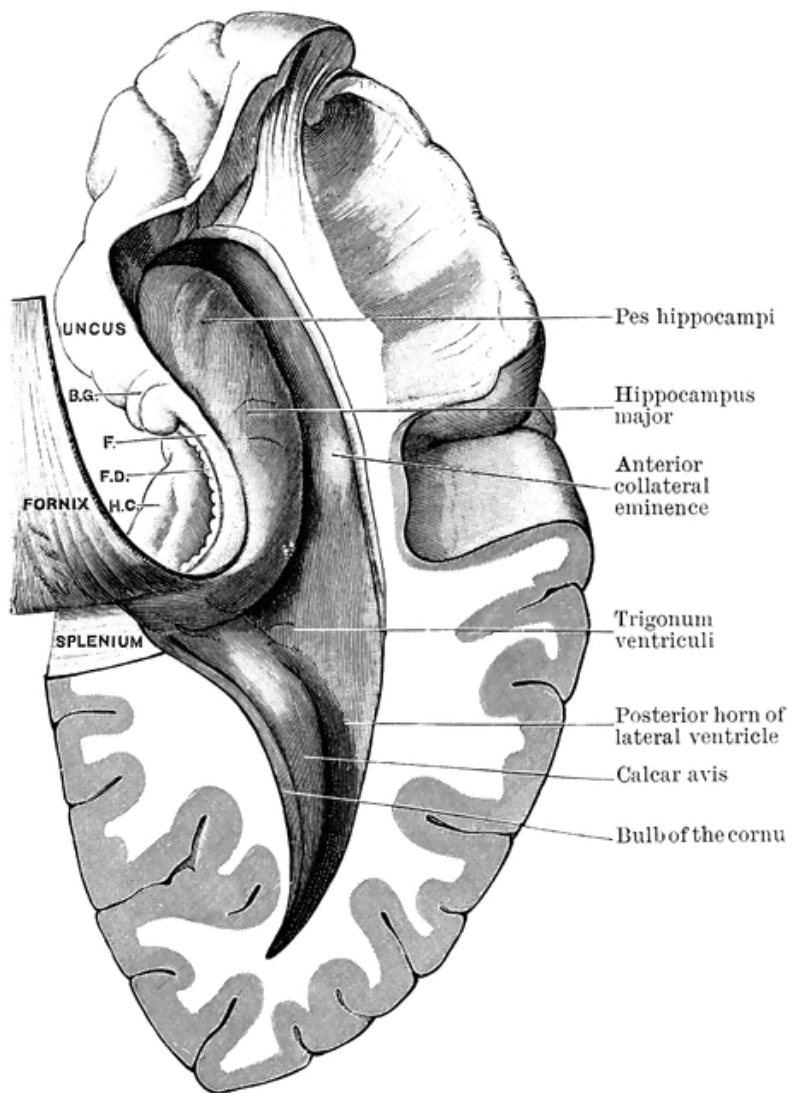
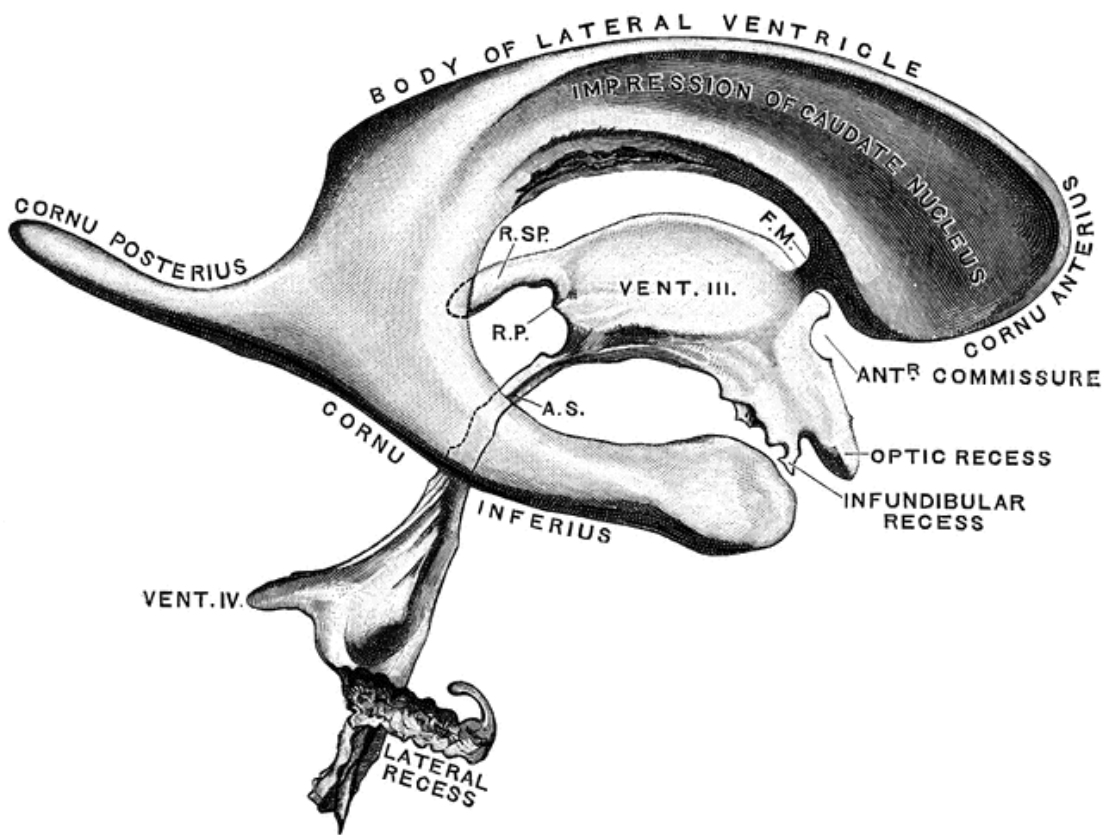


- 1 Right and left lateral ventricles
- 2 Interventricular foramen
- 3 Third ventricle
- 4 Cerebral aqueduct
- 5 Fourth ventricle
- 6 Median aperture
- 7 Lateral apertures
- 8 Central canal
- 9 Subarachnoid space
- 10 Arachnoid granulations
- 11 Superior sagittal sinus
- 12 Great cerebral vein
- 13 Straight sinus
- 14 Confluence of sinuses

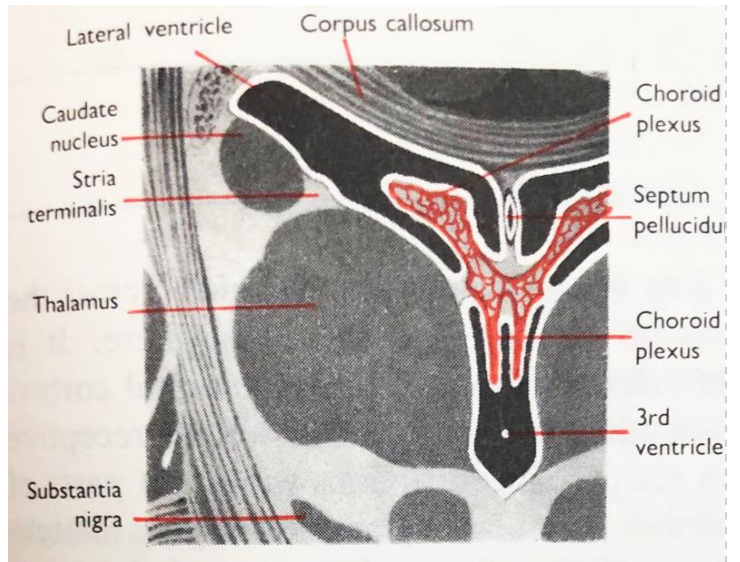
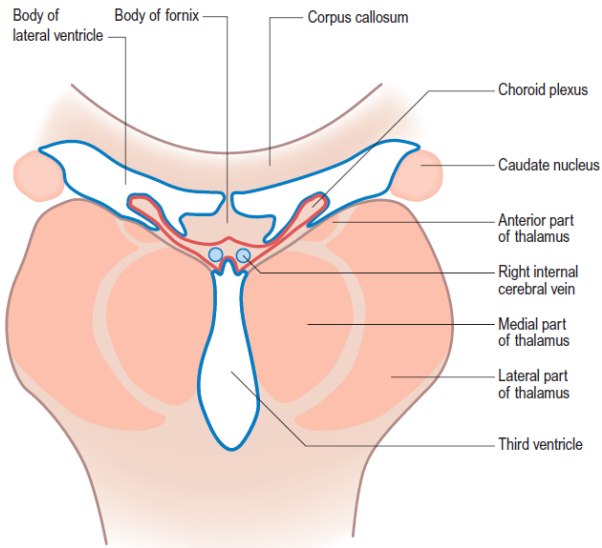
A. Lateral View, Schematic



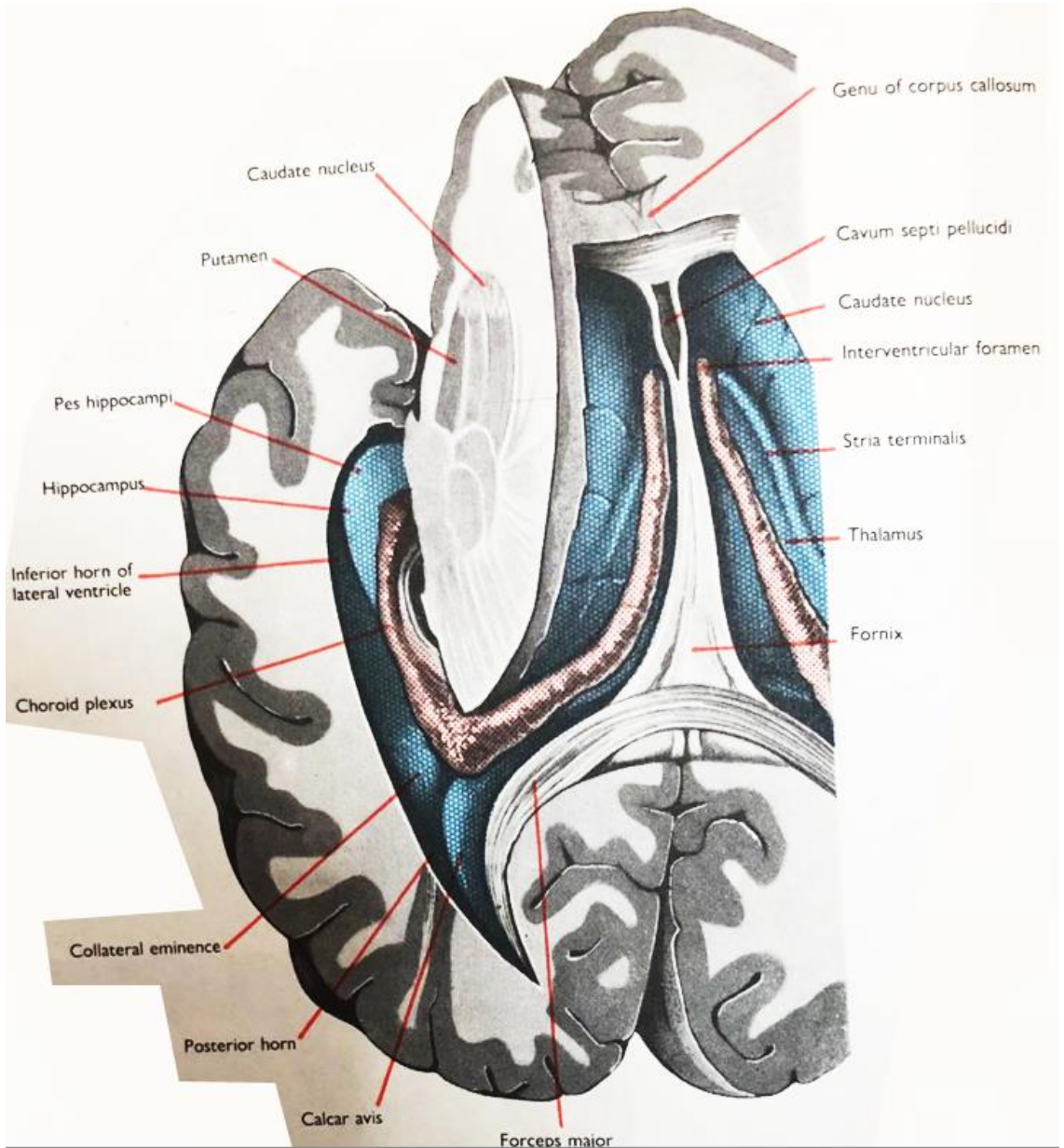
B. Superior View

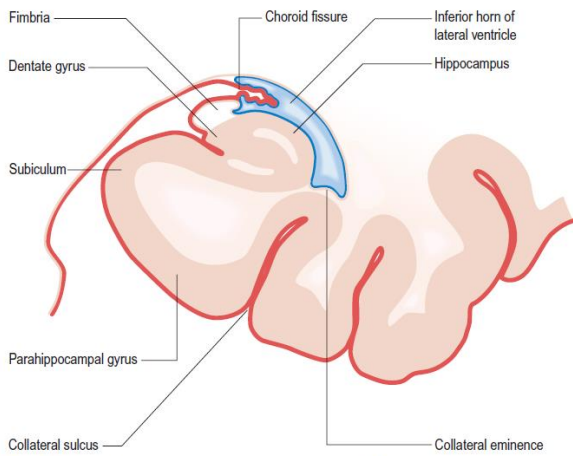
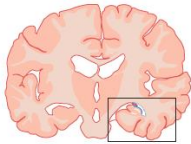
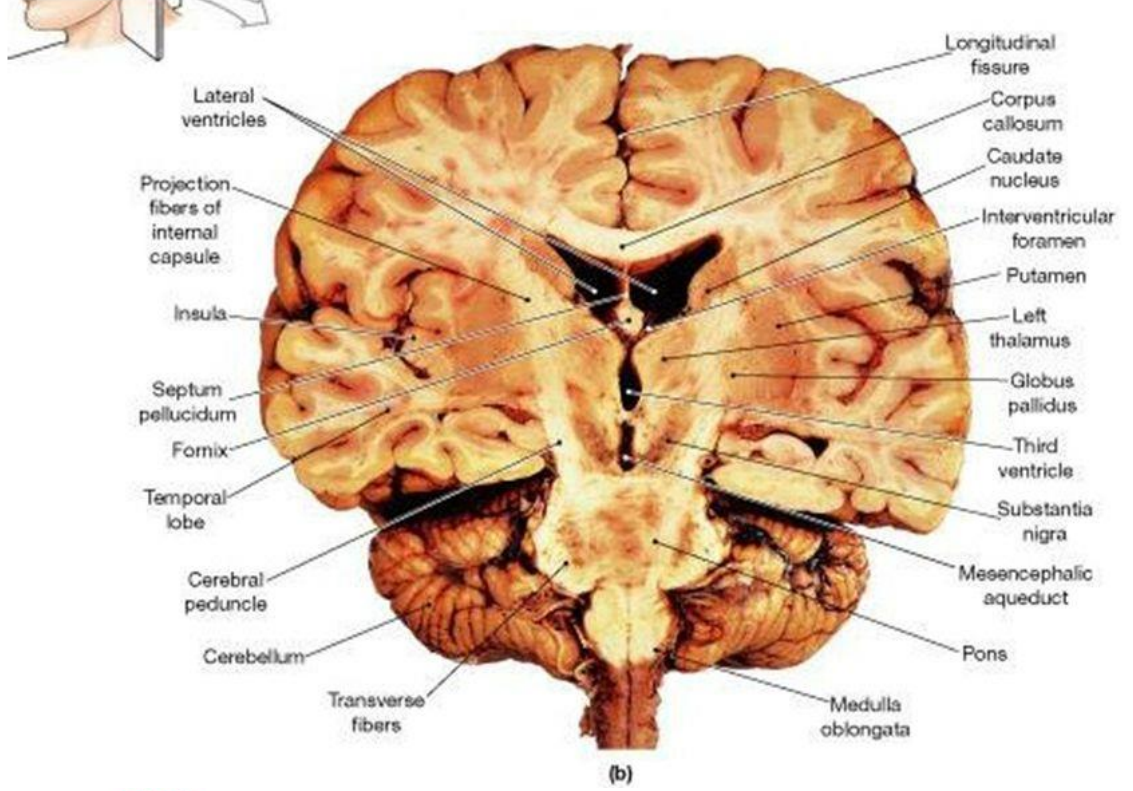


# Coronal section in the cerebrum at the level of interventricular foramina

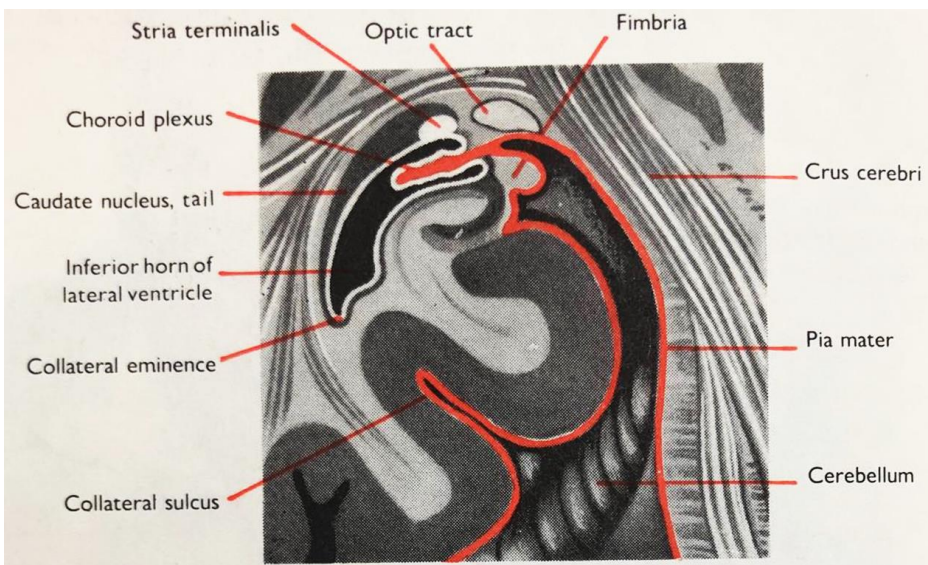


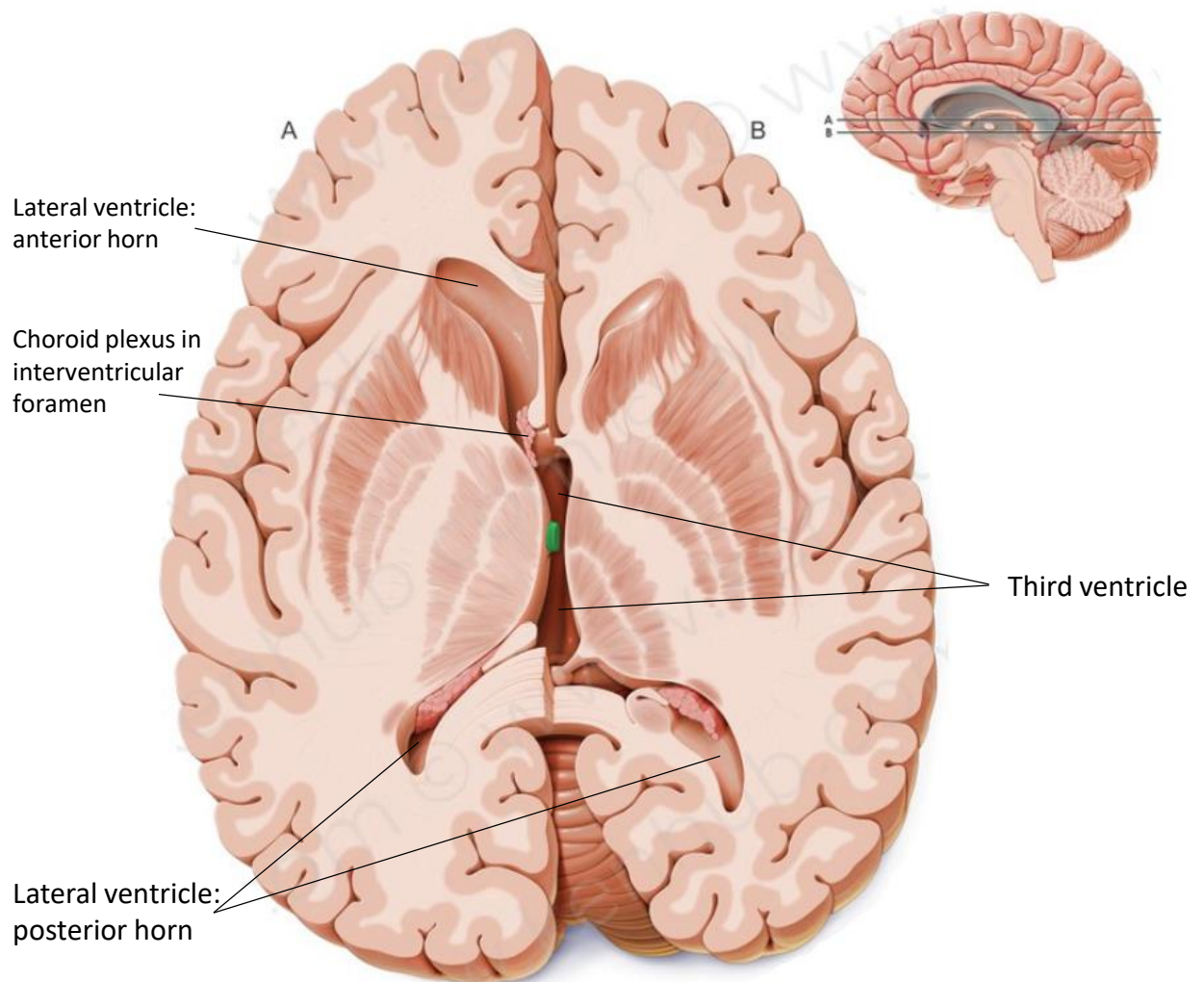
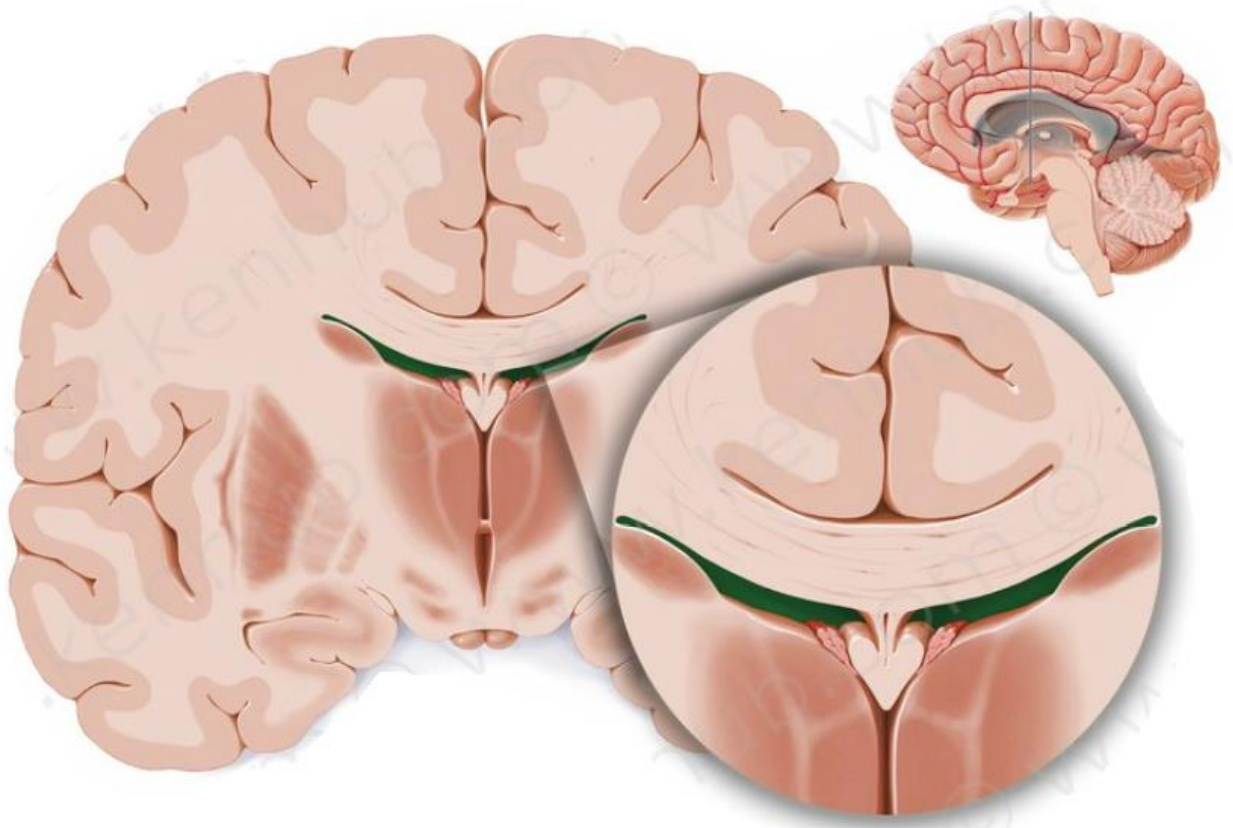
**Fig. 5.6** Coronal section through the lateral and third ventricles. Pia mater of the tela choroidea, red; ependyma, blue.

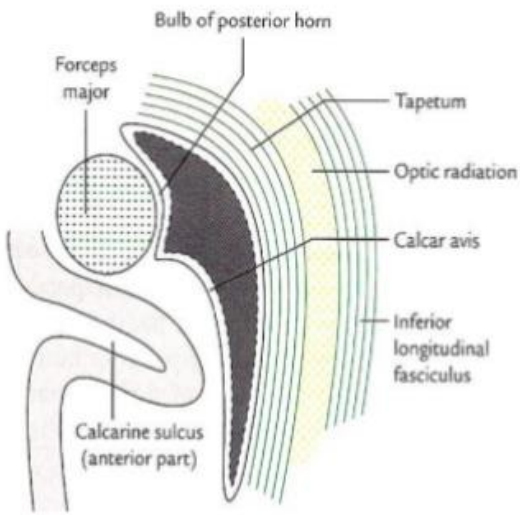
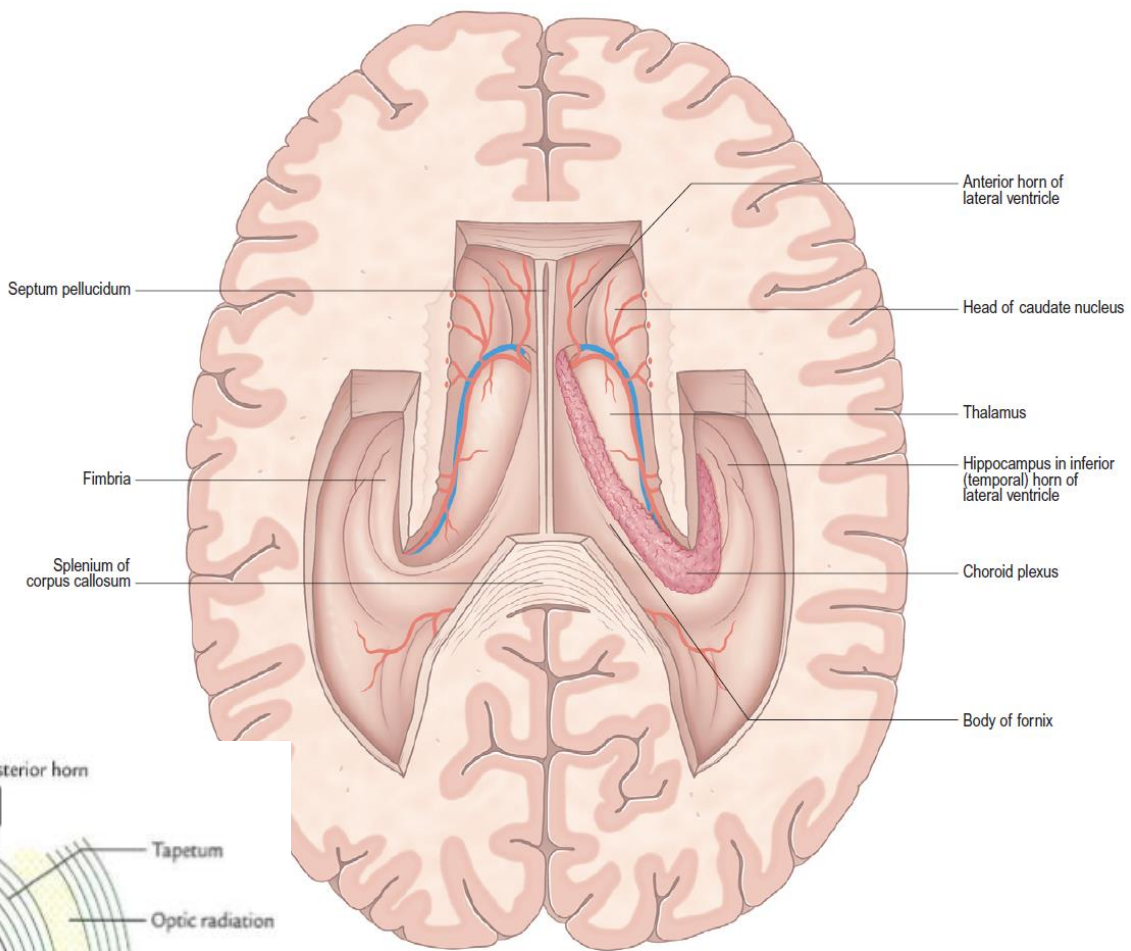




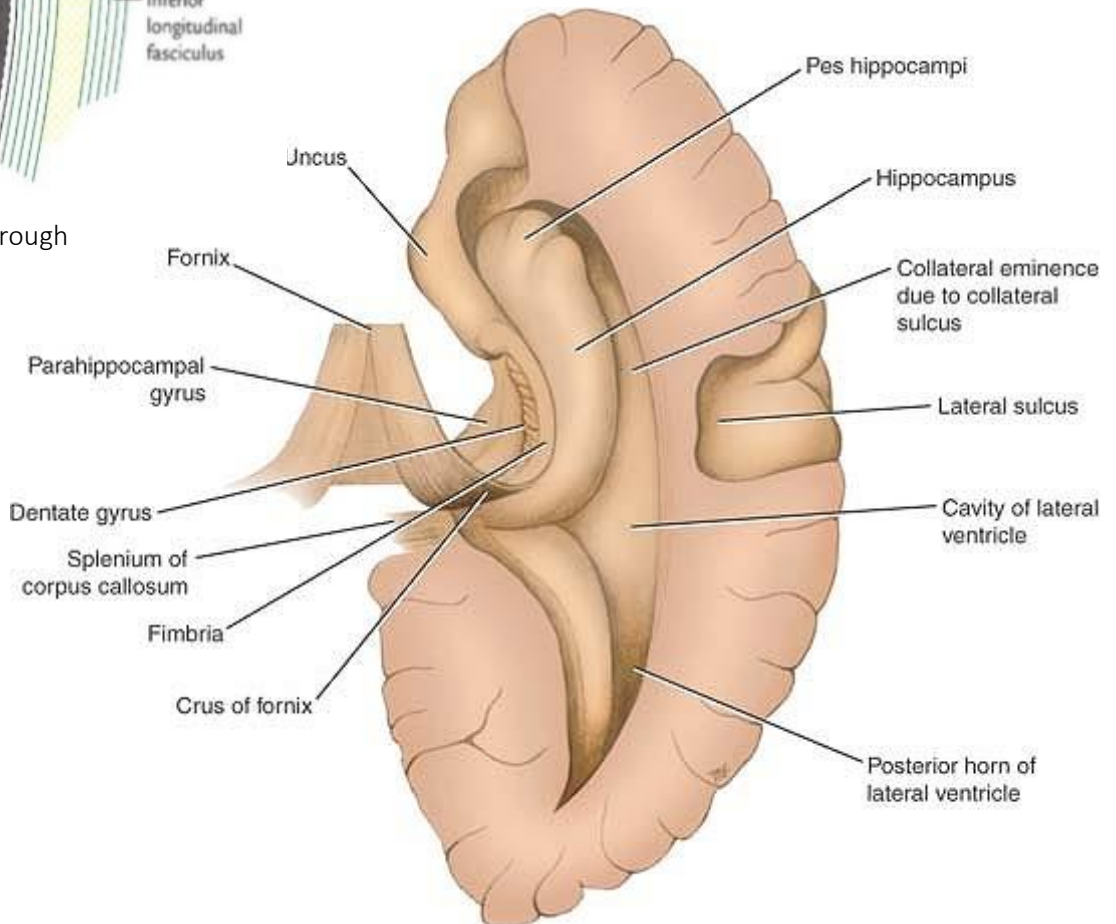
**Fig. 5.5** Coronal section through the inferior horn of the lateral ventricle. Pia mater, red; ependyma, blue.

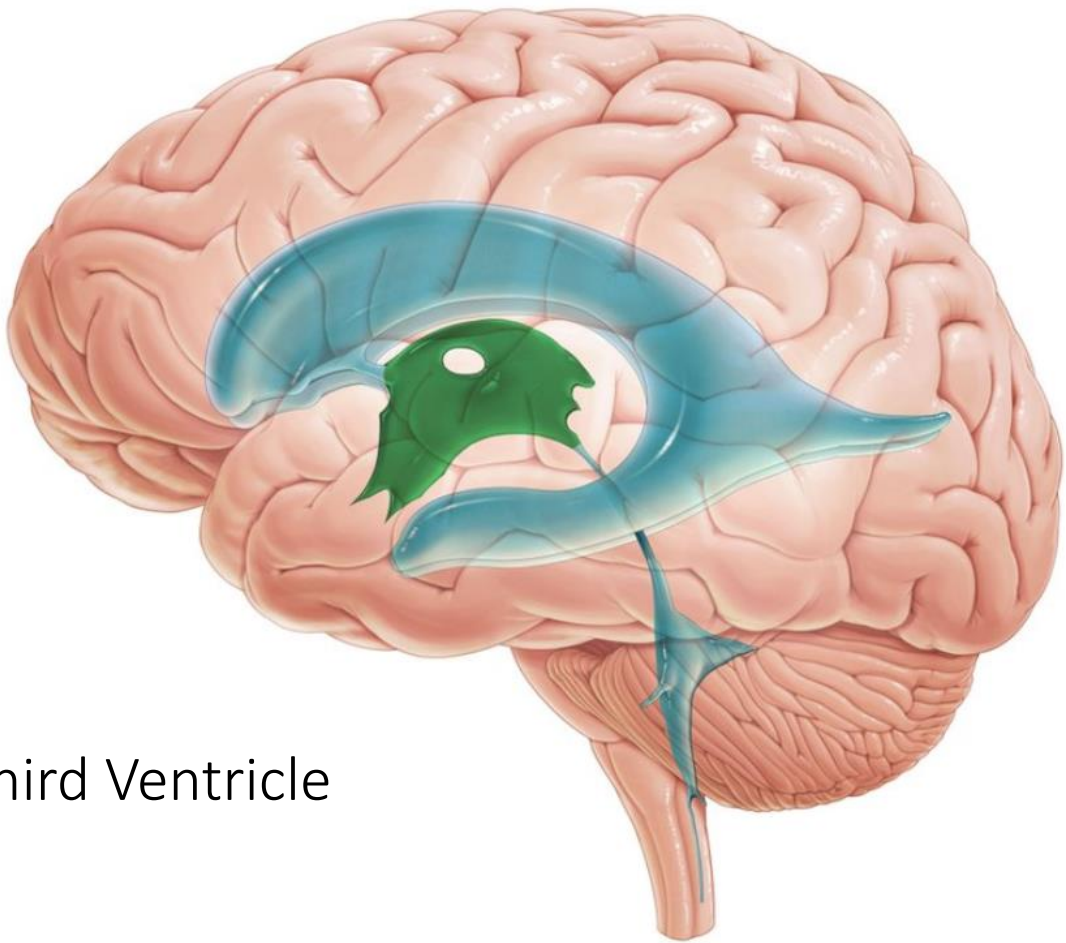




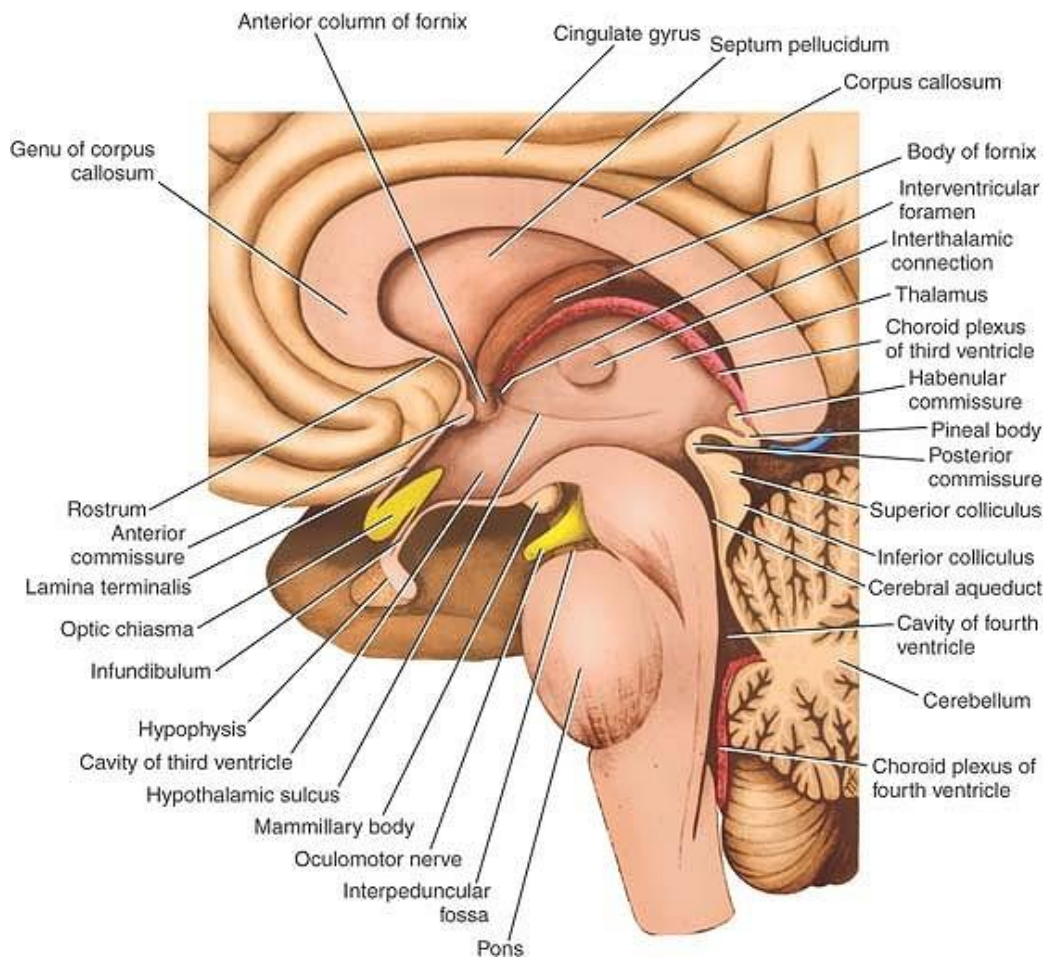


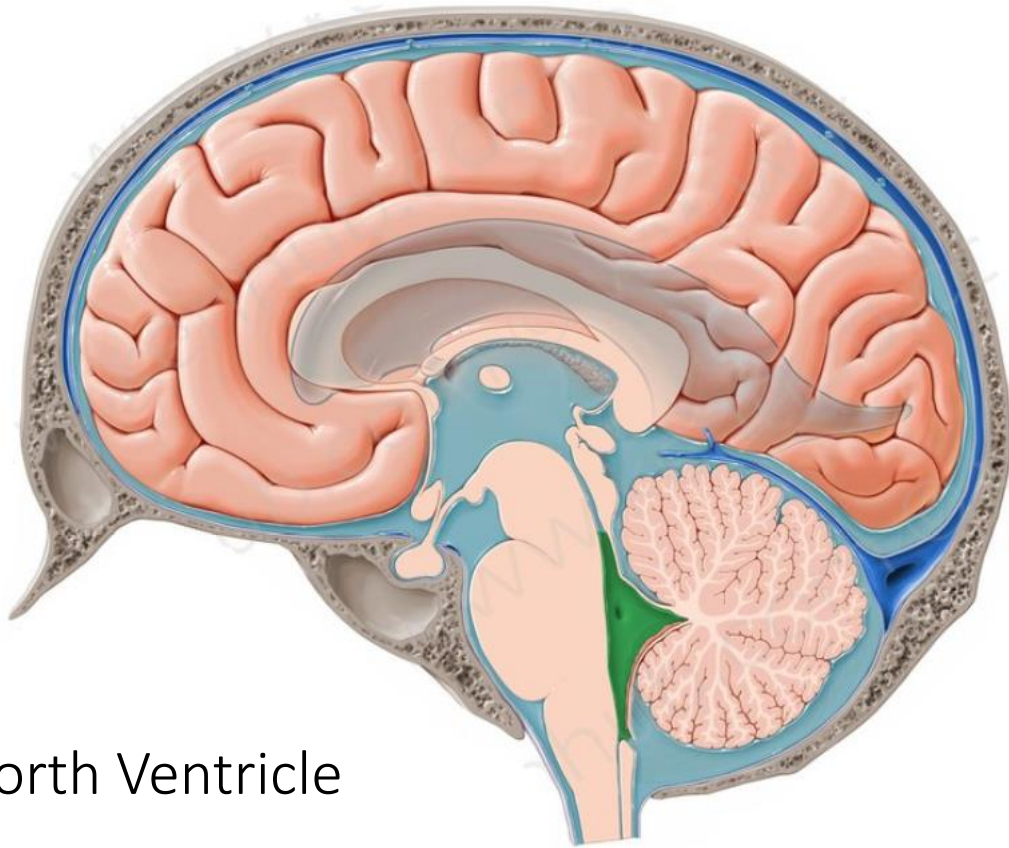
Coronal section through the posterior horn



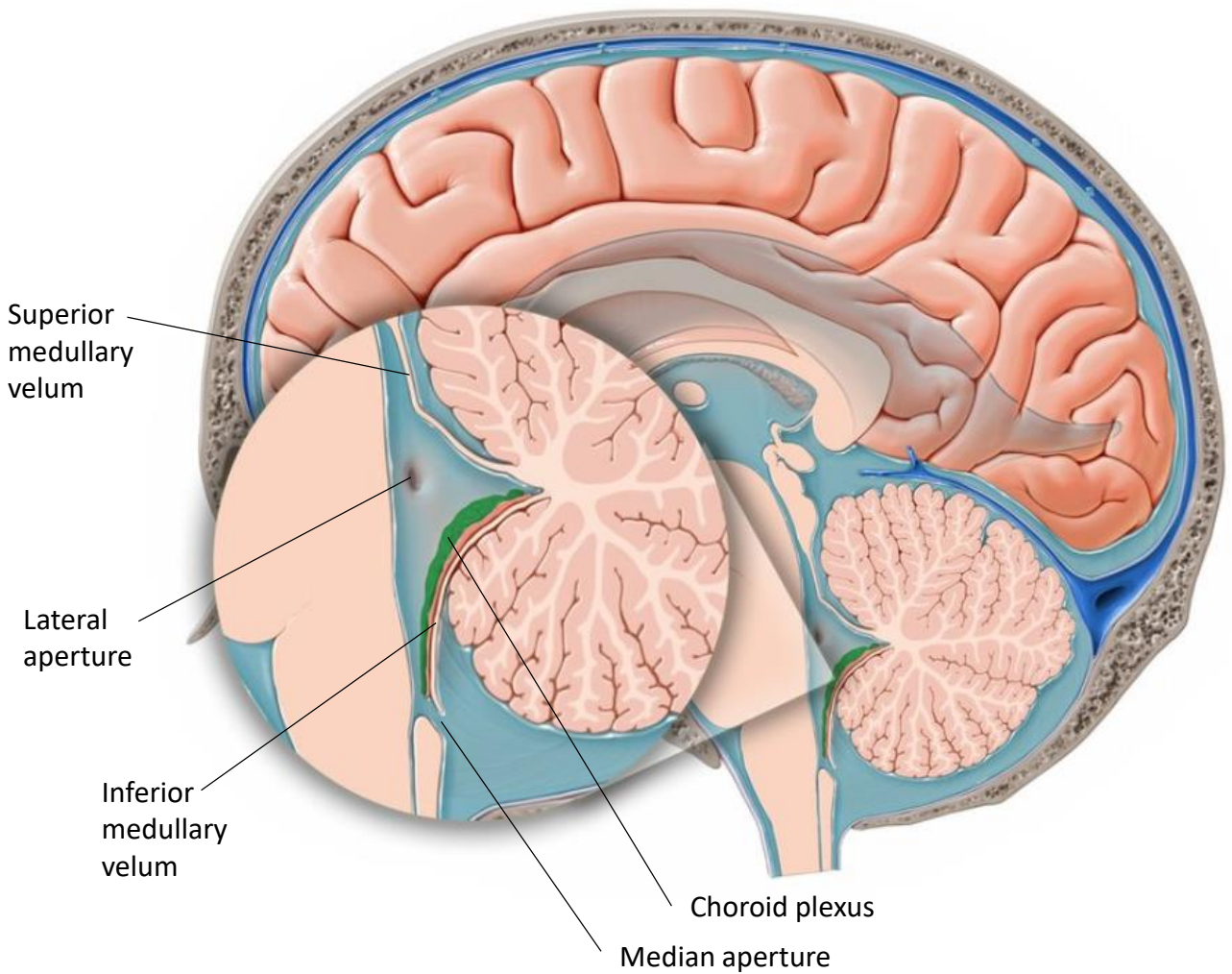


## Third Ventricle





Fourth Ventricle



Superior medullary velum

Lateral aperture

Inferior medullary velum

Choroid plexus

Median aperture



# Floor of the Forth Ventricle

