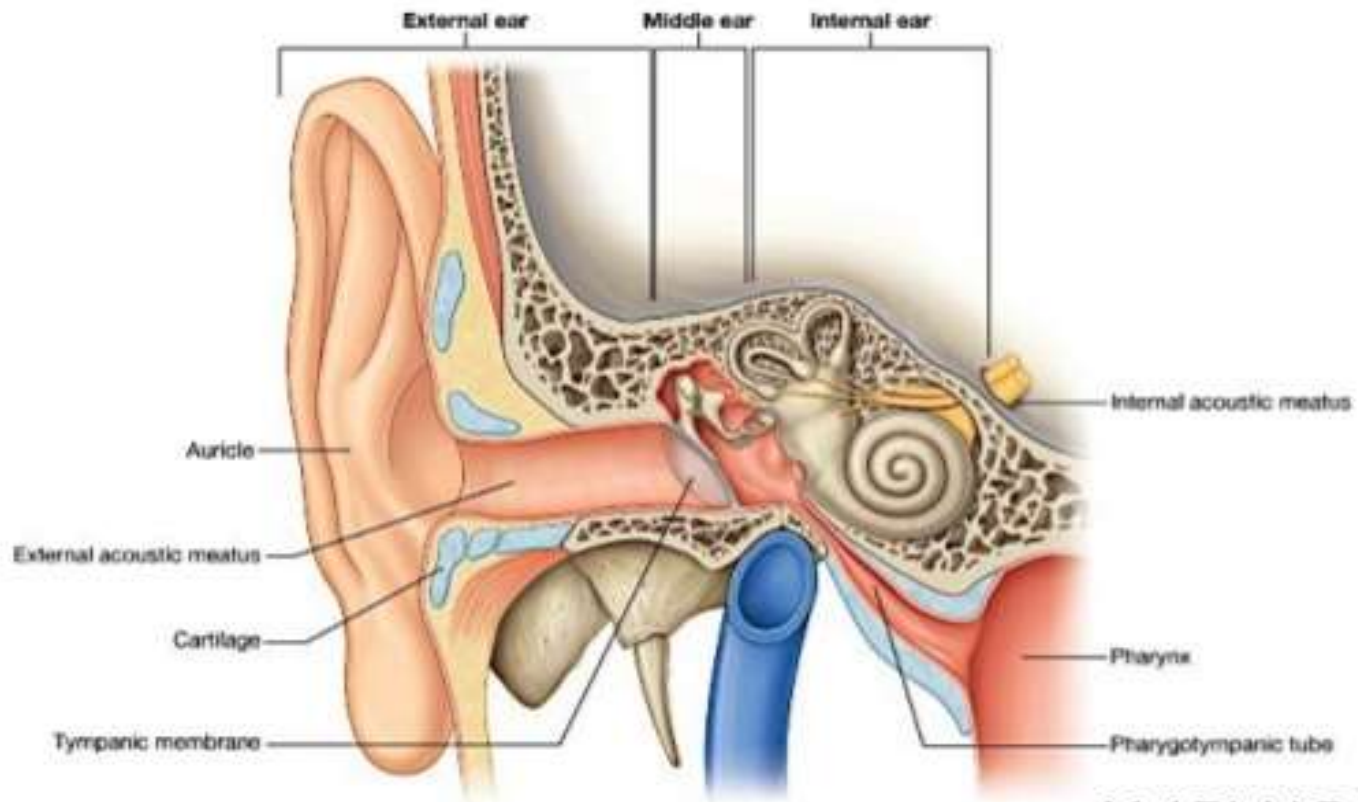


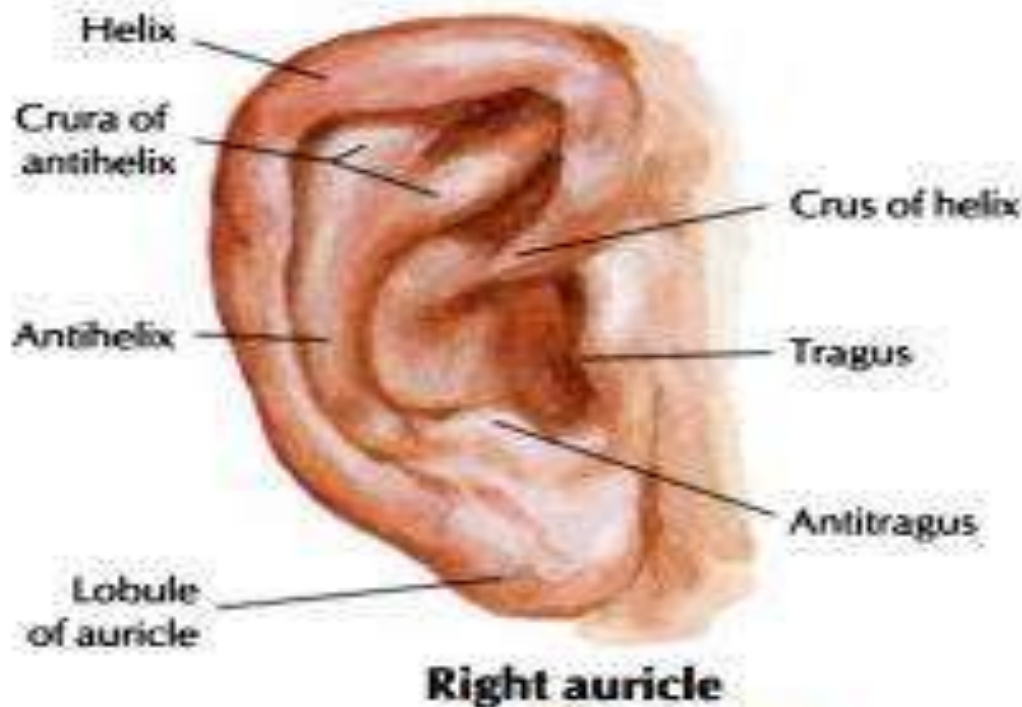
EAR AND AUDITORY PATHWAY



www.slideshare.net

Maj Rishi Pokhrel
Dept of Anatomy
NAIHS

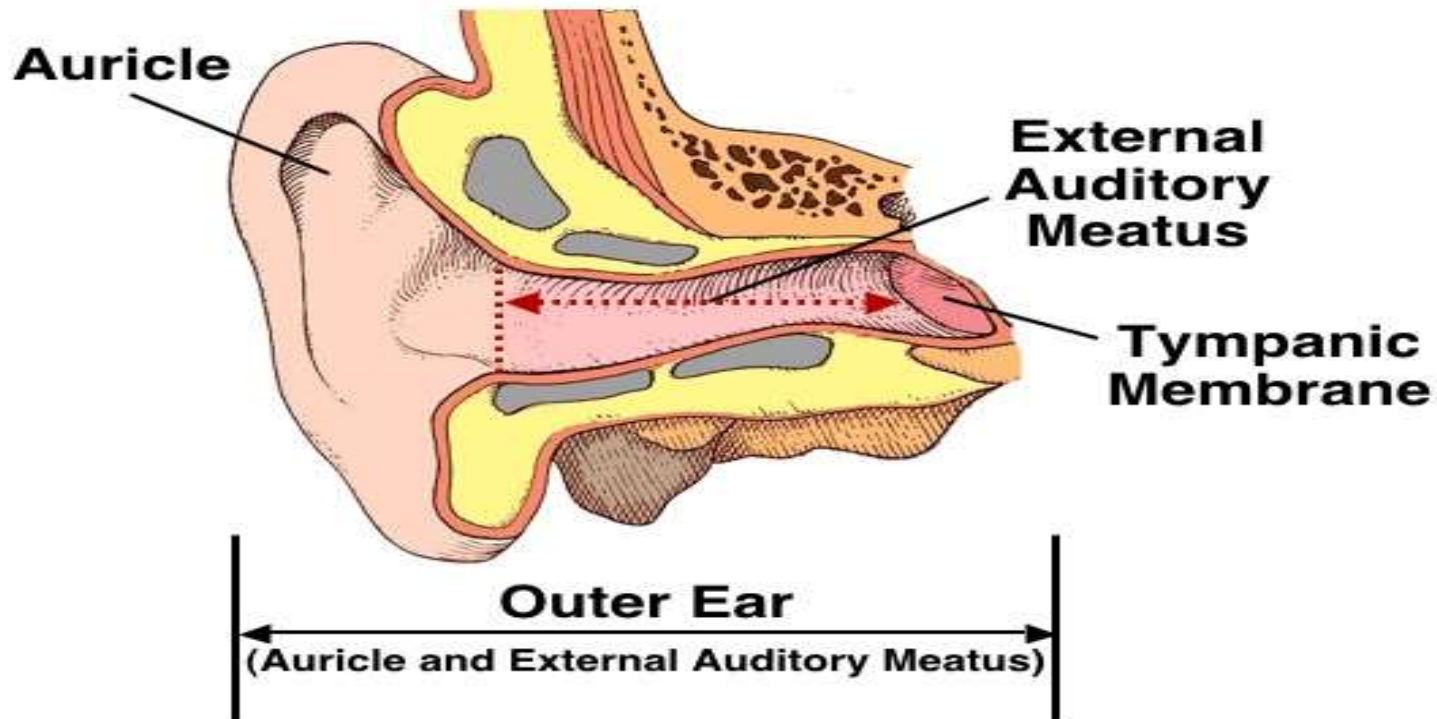
The Auricle: helix, crus of helix, tragus, lobule, antihelix, triangular fossa, antitragus, concha, Ext. aud. Canal opening



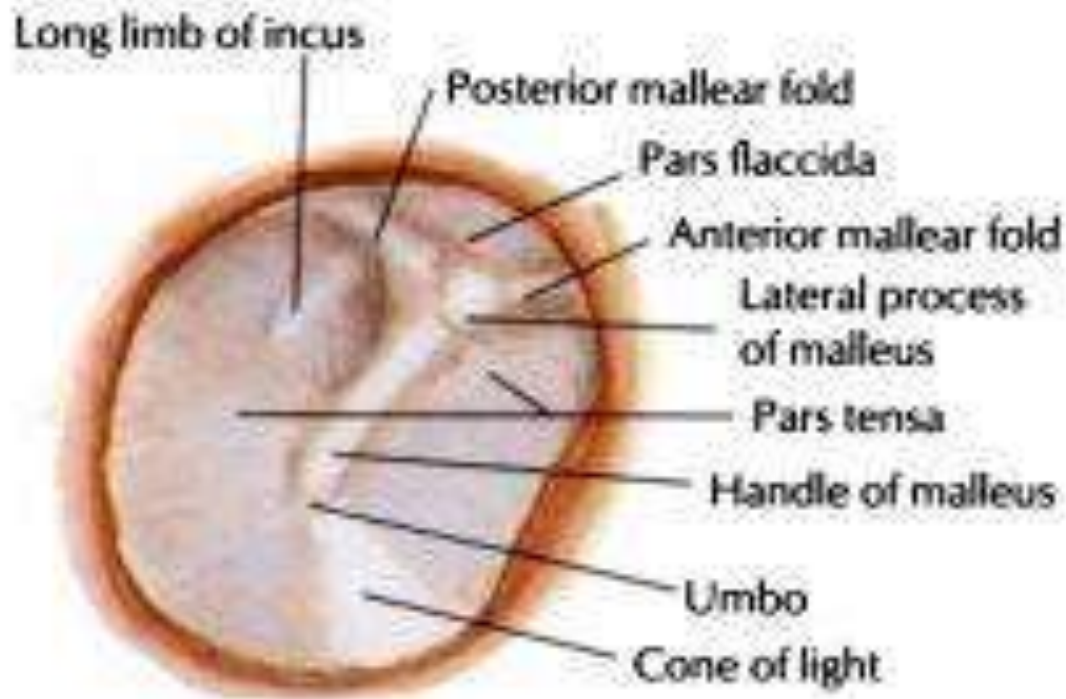
The External Auditory Canal (EAC): 24 mm

1-Outer 1/3: Cartilaginous part: hair follicles, sebaceous glands, cerumen glands

The wax: is hydrophobic, acidic & with antibacterial properties, the epithelium of the EAC has the capacity to migrate. 2- Inner 2/3: Bony part



THE TYMPANIC MEMBRANE (TM)



**Right tympanic membrane (eardrum)
viewed through speculum**

NERVE SUPPLY OF EXTERNAL EAR: •

- 1. Auriculo-temporal nerve (V3)** •
- 2. Greater Auricular (C2, 3)** •
- 3. Lesser Occipital (C2)** •
- 4. Arnold`s nerve (X)** •
- 5. Facial nerve (sensory twigs)** •

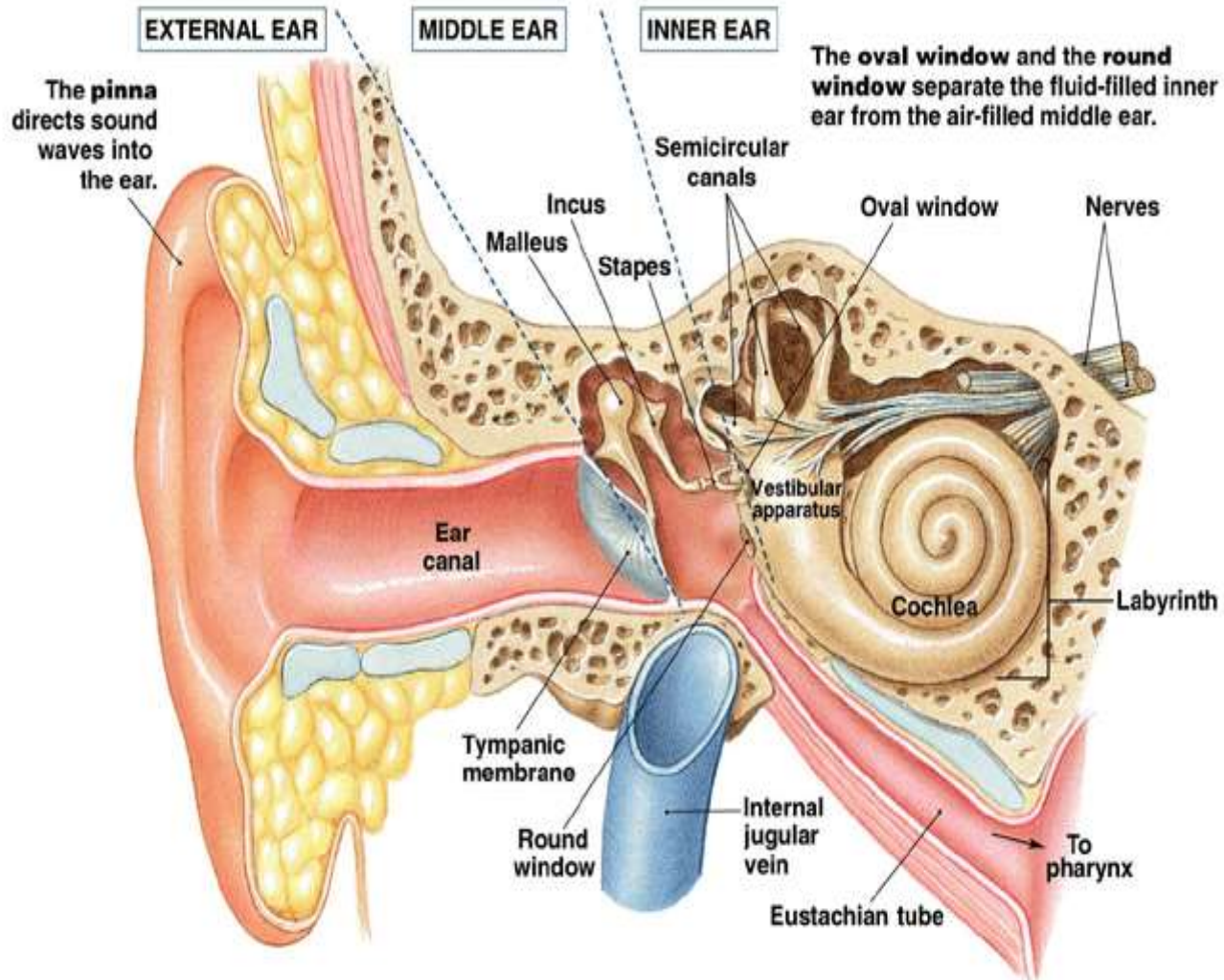
BLOOD SUPPLY OF EXTERNAL EAR: branches of •
external carotid artery

Venous drainage: to posterior auricular & •
superficial temporal veins

Lymphatic drainage: to pre-auricular, infra- •
auricular & mastoid lymph nodes.

THE MIDDLE EAR PROPER: a box of 6 walls, is an air-containing space with bony walls except laterally by TM.

Lateral, medial, anterior, posterior, superior, inferior boundaries



Sensory nerve supply of the middle ear: •

Jacobson`s nerve, a branch of IX (Glossopharyngeal nerve), •

Motor supply of middle ear muscles: by V & VII •
cranial nerves.

Arterial supply of middle ear: from branches of •
external & internal carotid arteries

Venous drainage: to pterygoid plexus or superior •
petrosal

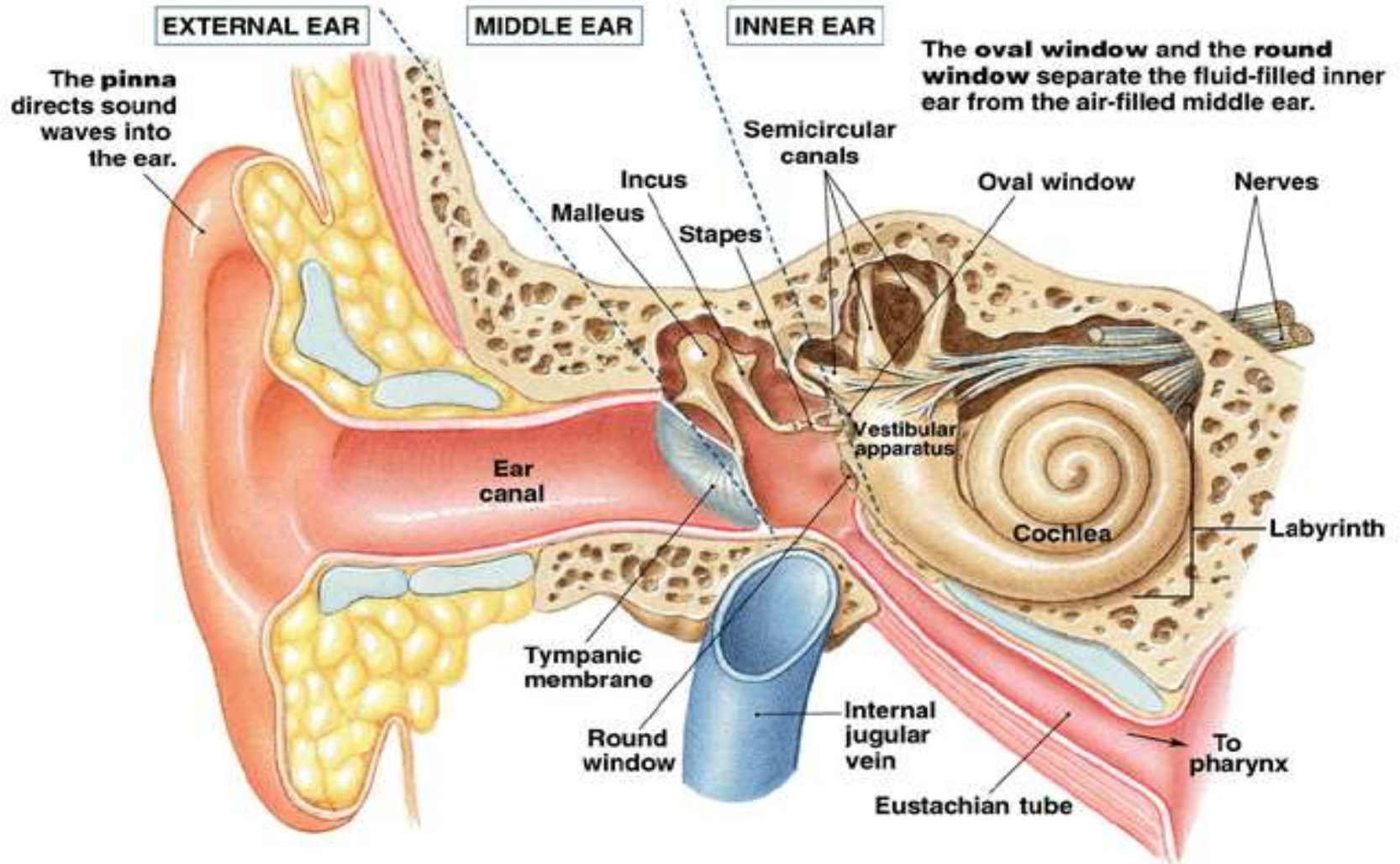
sinus •

Lymphatics: to retropharyngeal lymph node •

Inner ear

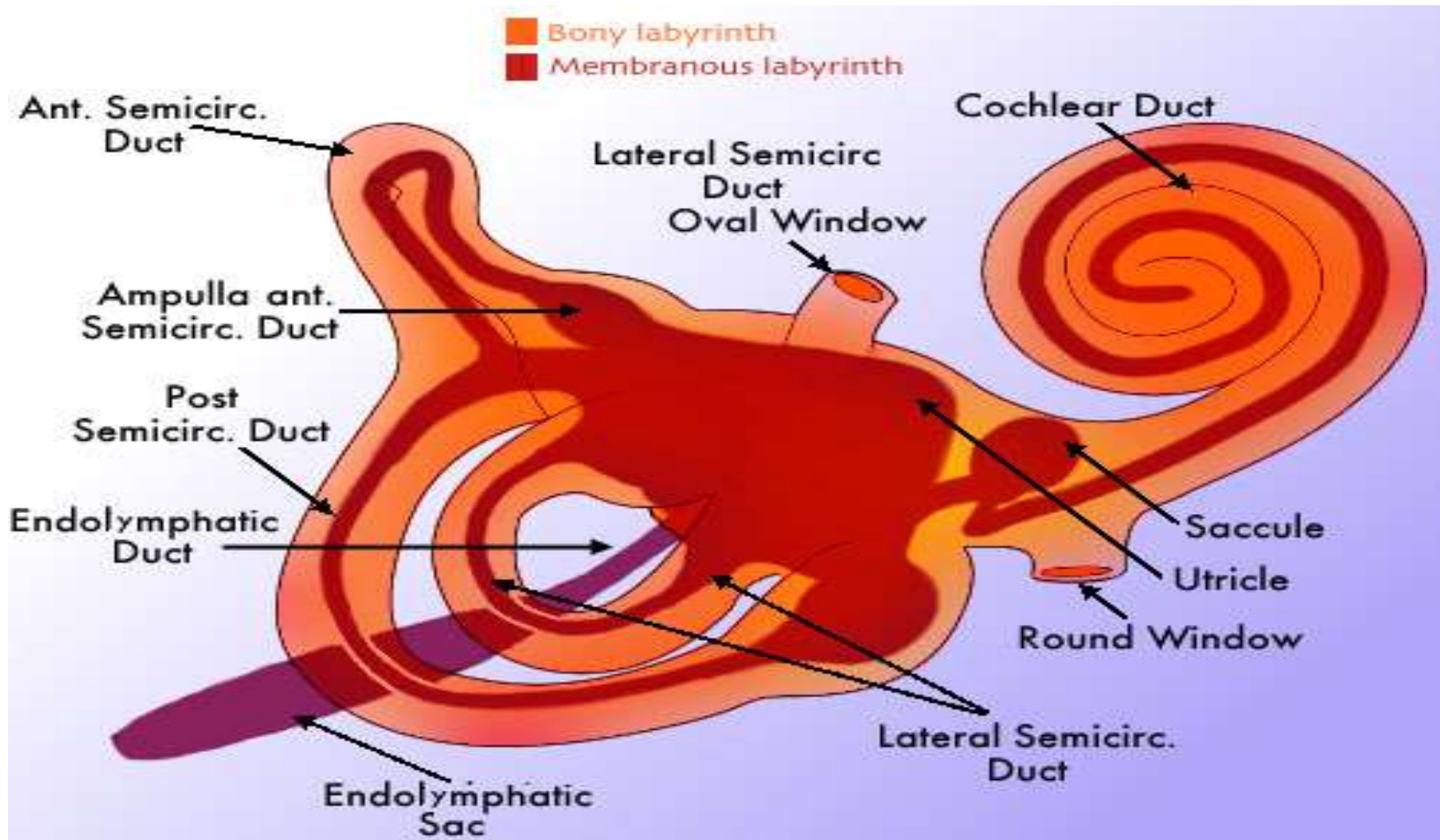
1. Bony Labyrinth :comprises of

A. Bony Semicircular Canals (SCCs) , B. vestibule, C. Cochlea

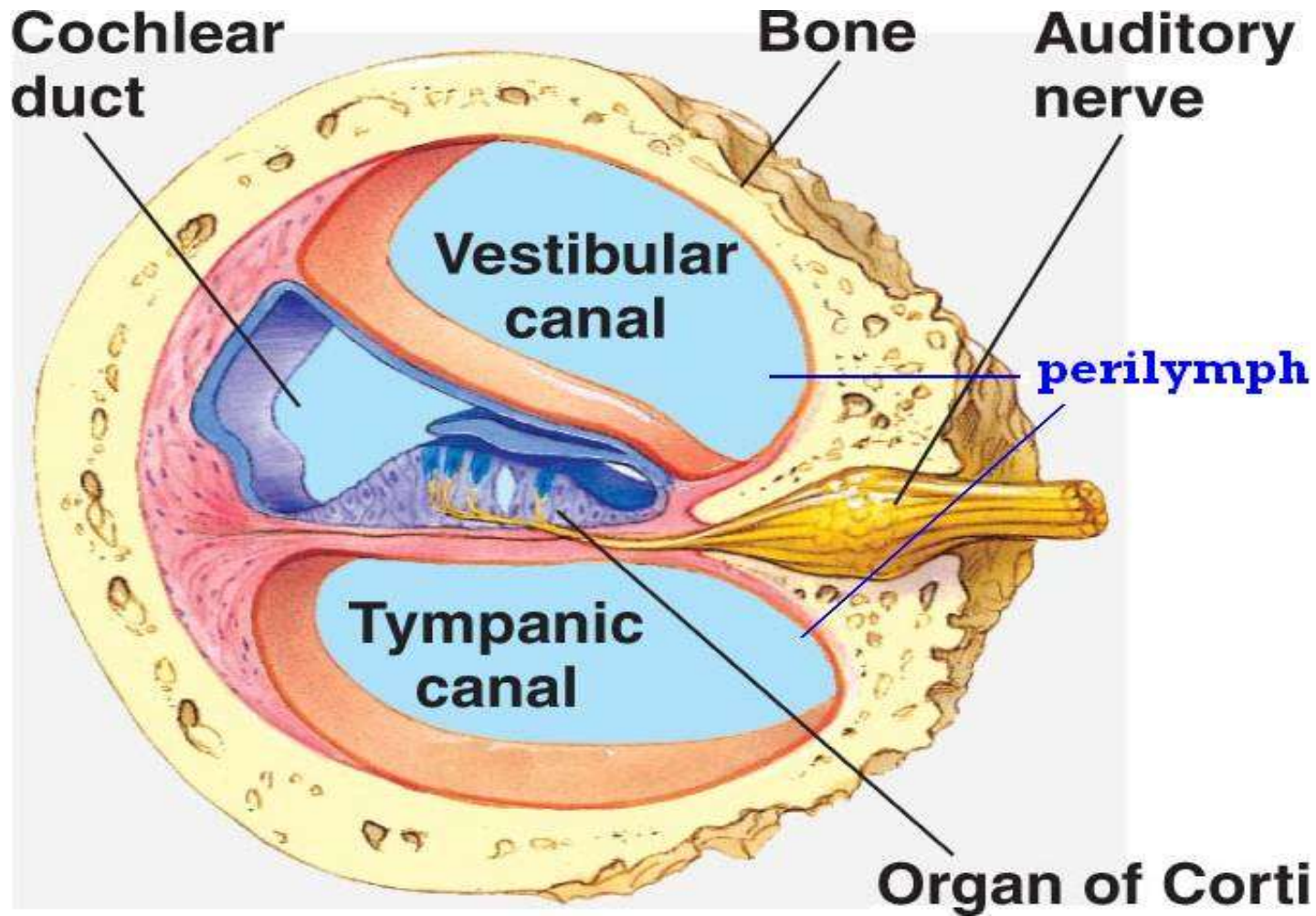


2. Membranous Labyrinth: comprises of

- A. Membranous SCCs, B. Utricle & Saccule , C. Cochlear Duct – triangular in cross section (Organ of Corti), D. Endolymphatic Duct & Sac ,
E. Ductus Reuniens



Organ of Corti



Hearing

