

THE MENINGES & DURAL VENOUS SINUSES

Dr Maan Al-Abbasi

PhD MSC MBChB

THE MENINGES

dura mater

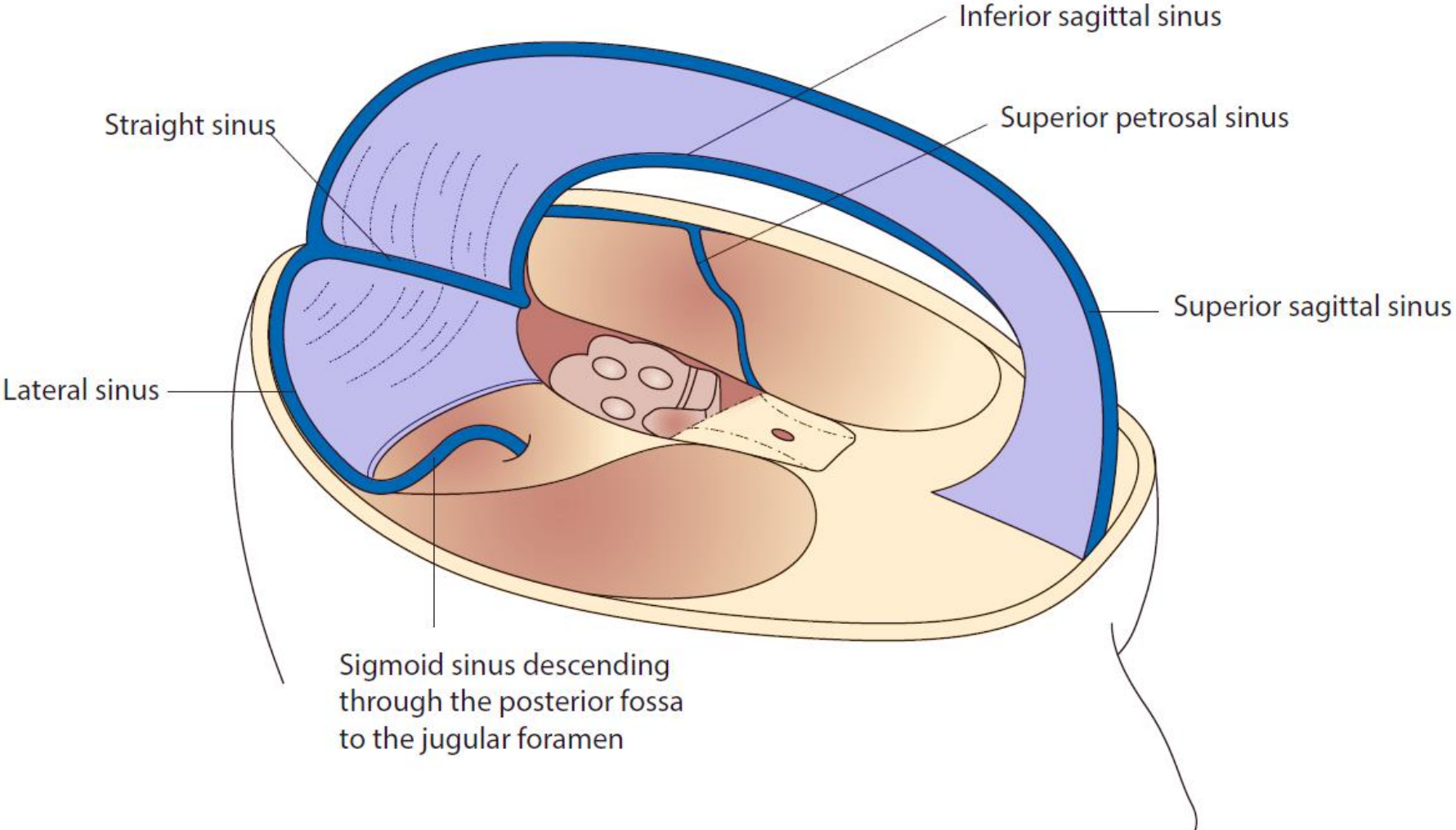
subdural space

arachnoid mater

subarachnoid space

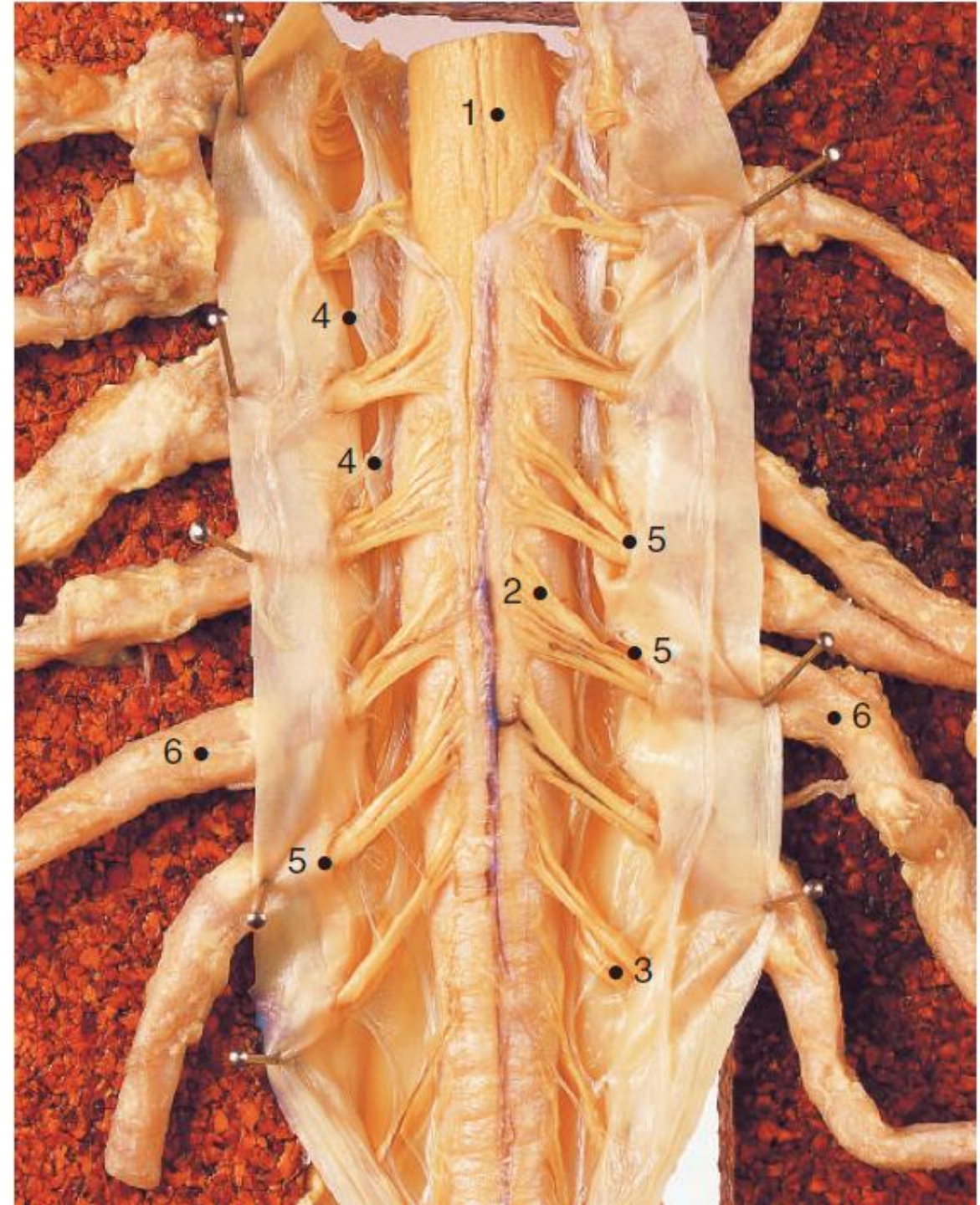
Pia mater

Cerebral dura mater – diagrammatic parasagittal section



Spinal dura mater opened posteriorly:

1. spinal cord;
2. dorsal (posterior) roots;
3. ventral (anterior) roots;
4. dentate
5. ligaments of pia;
6. spinal nerve piercing dura;
7. dural sheath of
8. mixed spinal nerve



Dural Venous sinuses

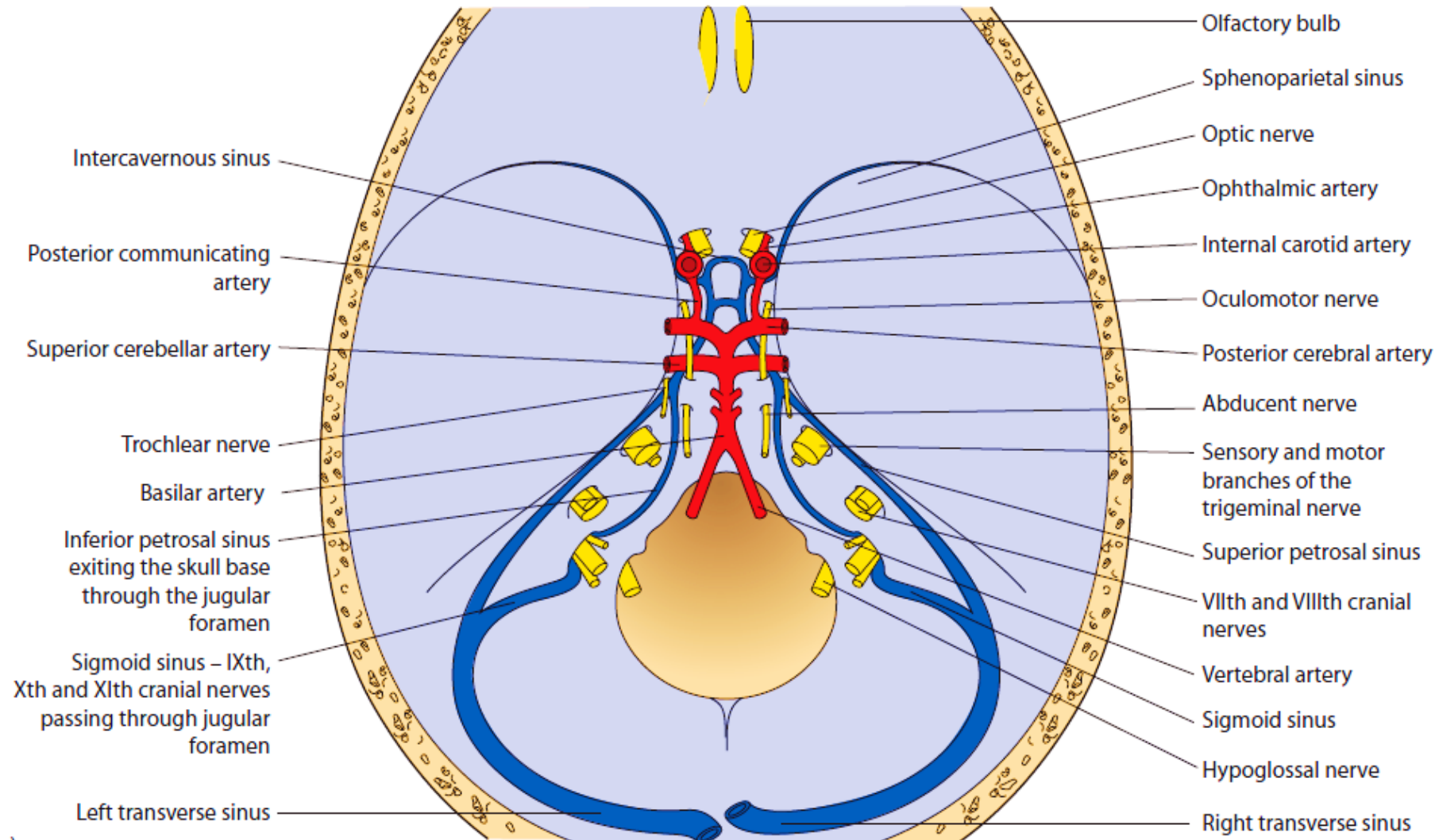
Single sinuses

- Superior sagittal sinus
- Inferior sagittal sinus
- Straight sinus
- Basilar sinus
- Intercavernous sinuses

Paired sinuses

- Transverse sinus
- Sigmoid sinus
- Cavernous sinus

Dural Venous sinuses

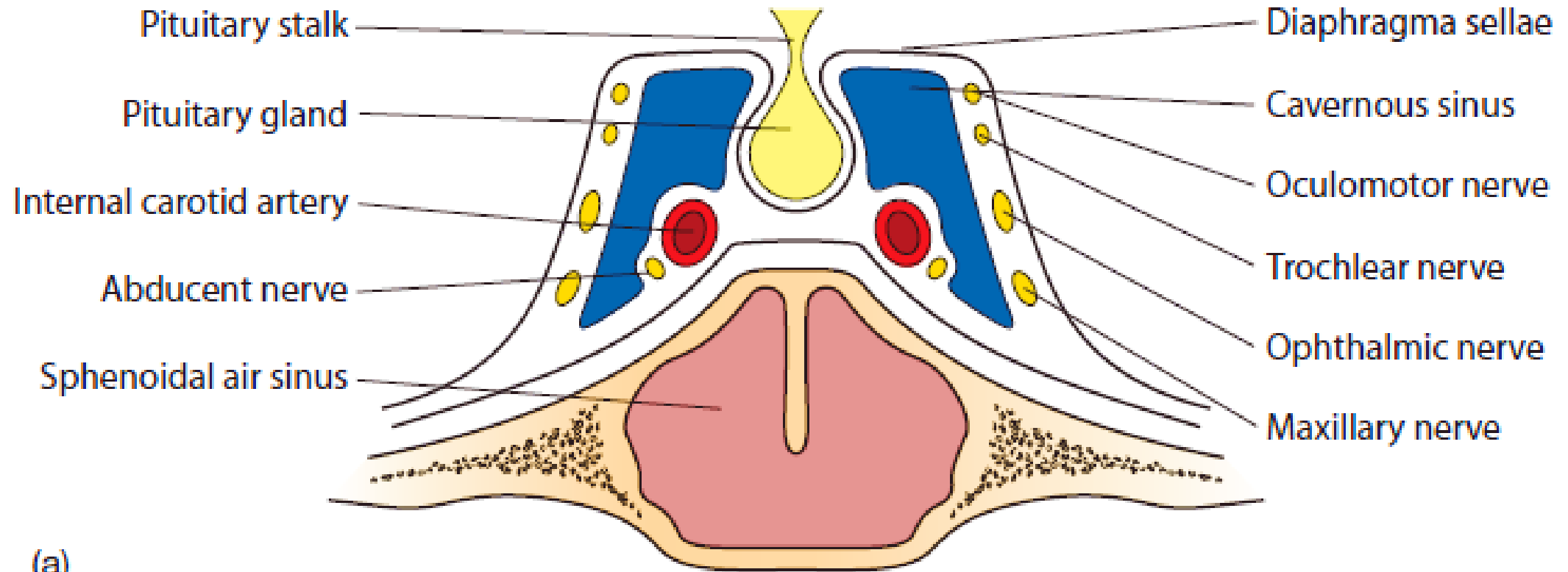


Cavernous sinus thrombosis following infection of the face

DON'T SQUEEZ



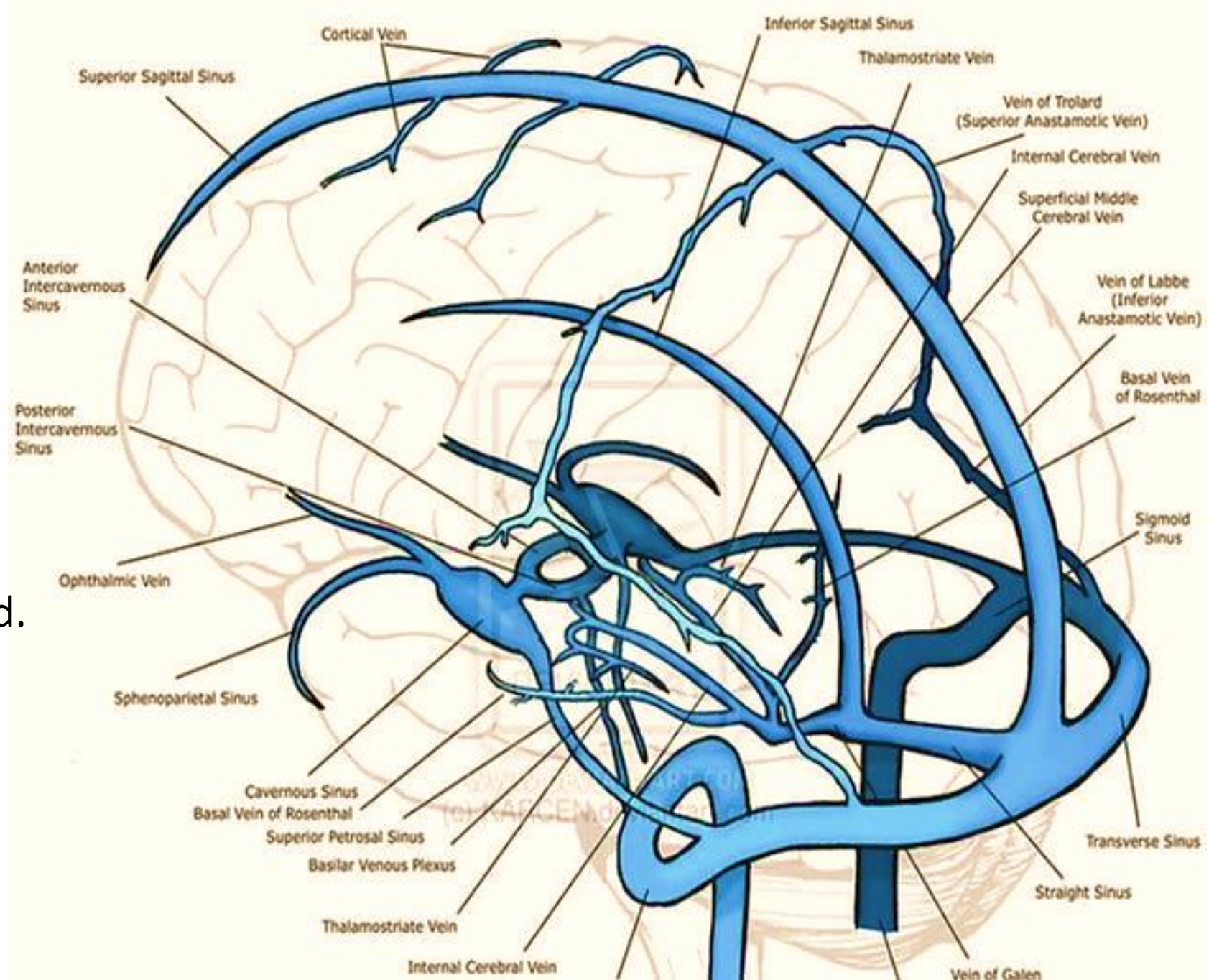
Cavernous sinus



Cranial Venous Sinuses

The emissary veins
condylar, parietal and mastoid.

Diploic veins
frontal, parietal and occipital
bones.



Quiz: The cavernous venous sinus is related laterally to the: T/F

- A. insula
- B. frontal lobe
- C. middle meningeal artery
- D. carotid artery
- E. pituitary gland