

Upper premolar tooth preparation



Start occlusal reduction with depth orientation groove , 1.5 mm for buccal (non – functional cusp) and 2 mm for palatal (functional cusp)...

Using round end taper fissure with tip diameter 1.5 mm

Upper premolar tooth preparation



Position of guiding groove

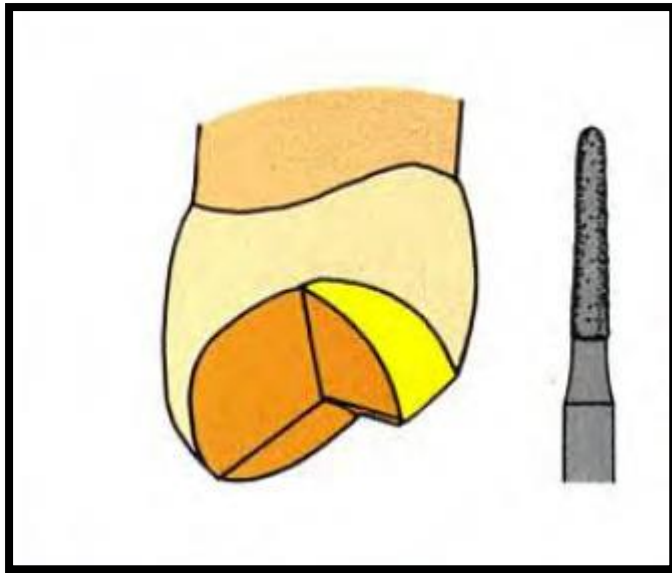


Start removal tooth structure between guiding groove

Upper premolar tooth preparation



Removal of tooth structure between guiding grooves for palatal cusp



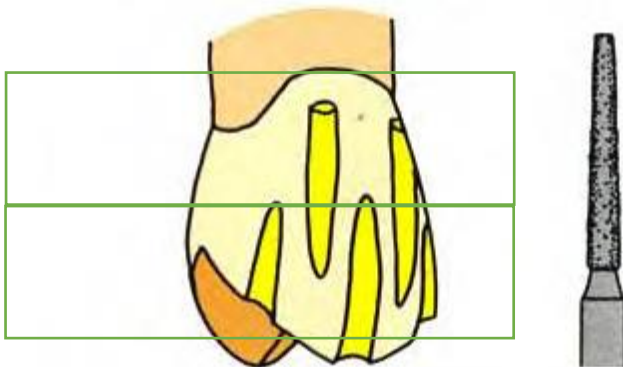
Functional cusp bevel (for palatal cusp)

Upper premolar tooth preparation



First Placement of guiding groove for functional bevel 2 mm , using round end taper fissure bur

Labial surface reduction:



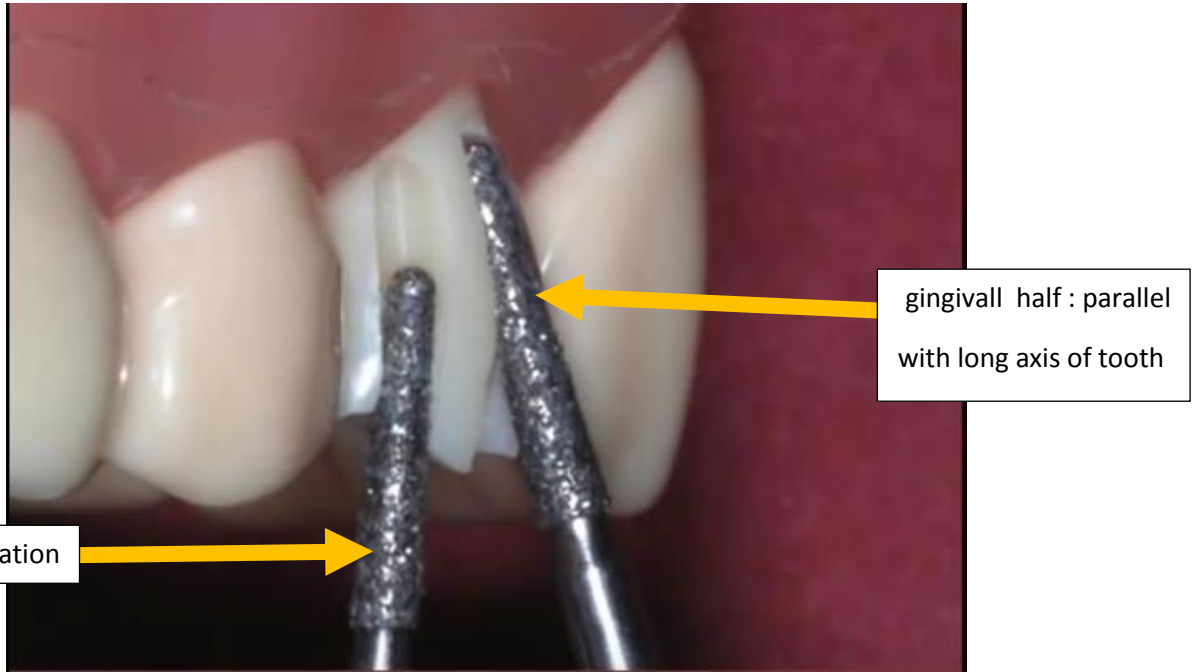
Labial surface divided into two half : gingival and occlusal ...

Gingival: parallel with long axis of tooth

Occlusal: inclined with tooth surface inclination

1.5 mm width of finishing line using flat end taper fissure bur for gingival half of labial surface reduction

Upper premolar tooth preparation



Placement of guiding groove



After guiding groove placement

Upper premolar tooth preparation



Removal tooth structure between groove



After complete reduction of occlusal half of labial surface reduction

Upper premolar tooth preparation



Gingival half of labial surface reduction

Important note:

Finishing line in this picture is high, It Must be with gingival level...

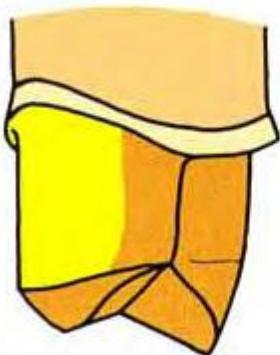
Upper premolar tooth preparation



After complete labial surface reduction..

Lingual surface reduction

After placement guiding groove parallel with long axis of tooth using round end taper fissure bur with tip diameter 0.5 mm or torpedo diamond bur



torpedo diamond bur

Upper premolar tooth preparation



Torpedo diamond bur parallel with long axis of tooth for lingual reduction

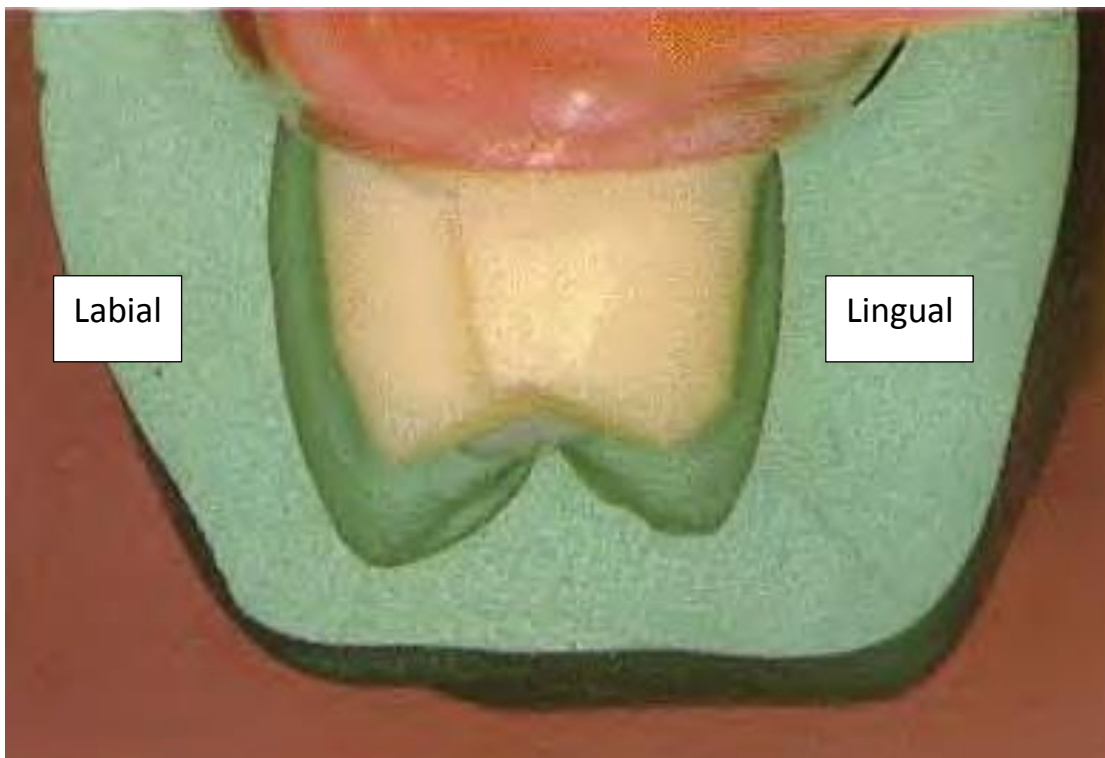
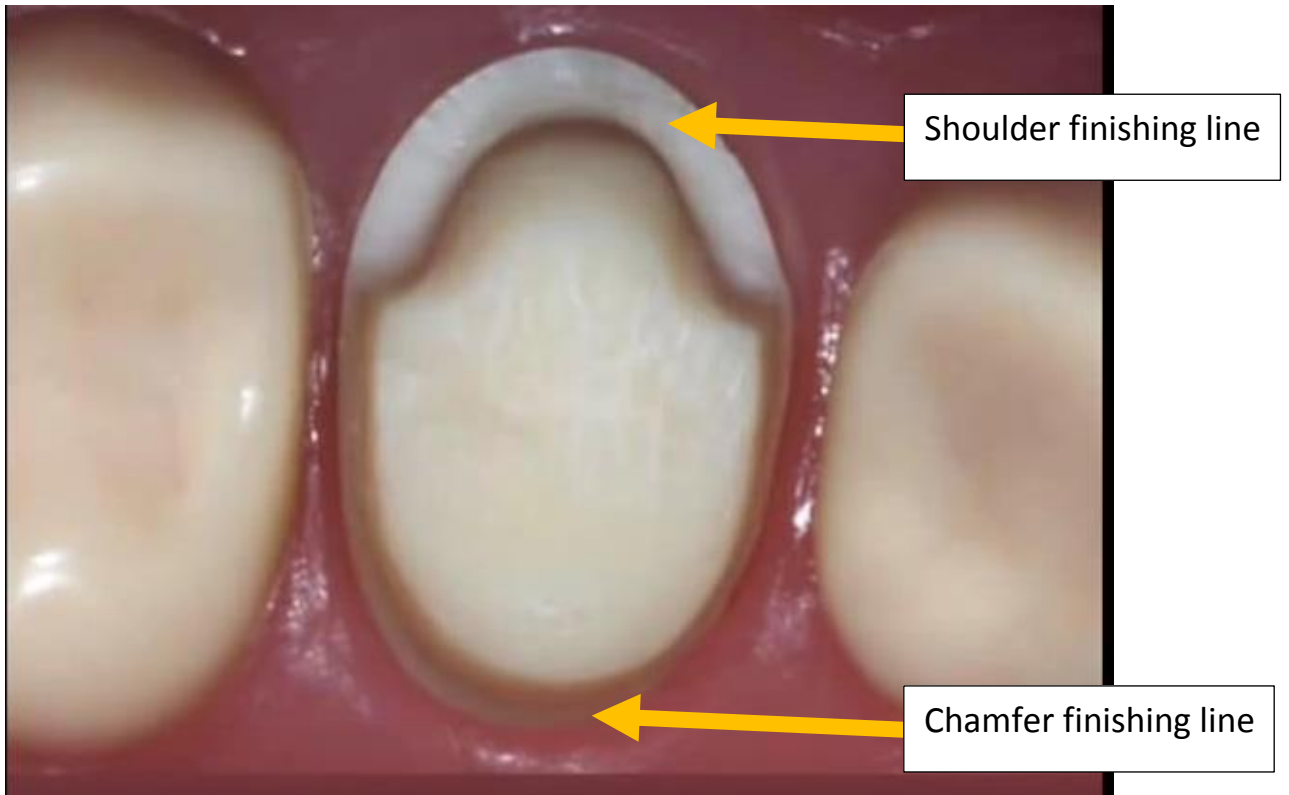
Proximal reduction:

Using round end taper fissure bur with tip diameter 0.5 mm or torpedo diamond or needle bur



Upper premolar tooth preparation

Final preparation (Wing preparation)



Upper premolar tooth preparation

Finishing of preparation:

Prepare tooth must be smooth with no sharp angle or roughness. .

Using