

# Physics of the Cardiovascular System

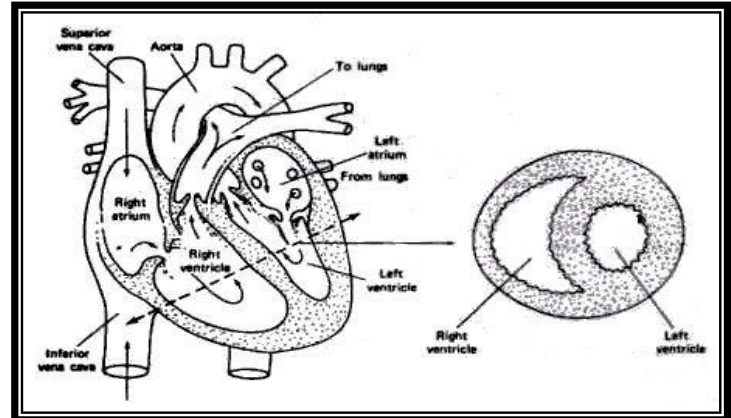
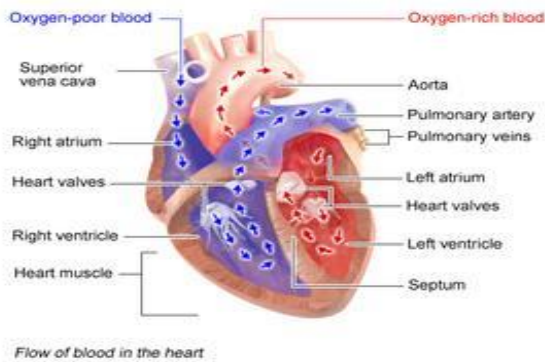
Dr.Muhammad Sami

The cells of the body act like individual engines. In order for them to function they must have: -

1. Fuel from our food to supply energy.
2. O<sub>2</sub> from the air we breathe to combine with the food to release energy.
3. A way to dispose of the by-products of the combustion (mostly CO<sub>2</sub>, H<sub>2</sub>O, and heat).

Since the body has many billions of cells an elaborate transportation system is needed to deliver the fuel and O<sub>2</sub> to the cells and remove the by-products. The blood performs this important body function. Blood represents about 7% of the body mass or about 4.5kg (~4.4 liters) in a 64kg person. The blood, blood vessels, and heart make up the cardiovascular system (CVS).

## Major components of the cardiovascular system



The heart is basically a double pump; it provides the force needed to circulate the blood through the two major circulatory systems: -

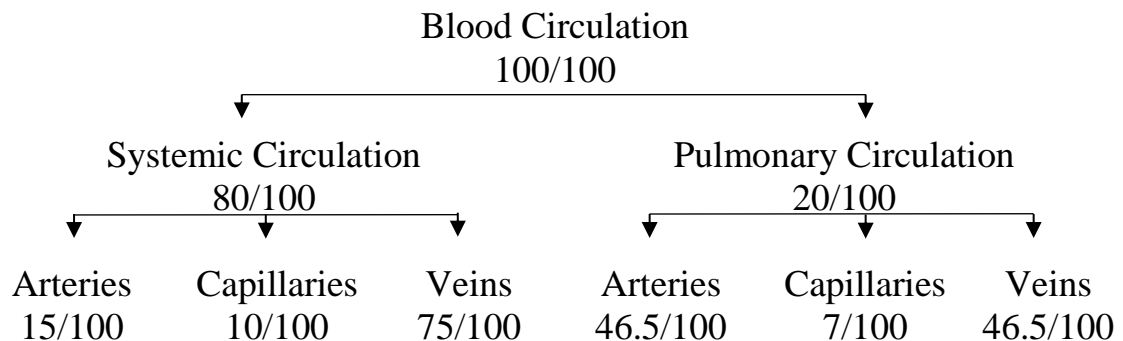
1. The pulmonary circulation in the lungs.
2. The systemic circulation in the rest of the body.

The blood in a normal individual circulates through one system before being pumped by the other section of the heart to the second system. Let us start with the blood in the left side of the heart and follow its circulation through one complete loop. The blood is pumped by the contraction of the

heart muscles from the left ventricle at a pressure of about 125 mm Hg into a system of arteries that subdivided into smaller and smaller arteries (arterioles) and finally into a very fine meshwork of vessels called the capillary bed. During the few seconds it is in the capillary bed the blood supplies O<sub>2</sub> to the cells and picks up CO<sub>2</sub> from the cells. After passing through the capillary bed the blood collects in small veins (venules) that gradually combine into larger and larger veins before it enters the right side of the heart via two main veins-the superior vena cava and the inferior vena cava. The returning blood is momentarily stored in the reservoir (the right atrium). And during a weak contraction (5-6 mm Hg) the blood flows into the right ventricular. On the next ventricular contraction this blood is pumped at a pressure of about 25 mm Hg via the pulmonary arteries to the capillary system in the lungs, where it receives more O<sub>2</sub> and where some of the CO<sub>2</sub> diffuses into the air in the lungs to be exhaled. The freshly oxygenated blood then travels via the main veins from the lungs into the left reservoir of the heart (left atrium); during the weak atrial contraction (7-8 mmHg) the blood flows into the left ventricle. On the next ventricular contraction this blood is again pumped from the left side of the heart into the general circulation.

The heart has a system of valves that, if functioning properly, permit the blood to flow only in the correct direction. If these valves become diseased and do not open or close properly the pumping of the blood becomes inefficient.

The blood volume is not uniformly divided between the pulmonary and systemic circulation, but it is:



**Example: calculate the mass of the blood in all circulation of a person his body mass is 80Kg?**

Mass of Blood $80 \times 7/100 = 5.6\text{kg}$					
Mass of Blood in Systemic Circulation $5.6 \times 80/100 = 4.48\text{kg}$			Mass of Blood in Pulmonary Circulation $5.6 \times 20/100 = 1.12\text{kg}$		
Arteries $4.48 \times 15/100$ = 0.672kg	Capillaries $4.48 \times 10/100$ = 0.448kg	Veins $4.48 \times 75/100$ = 3.360kg	Arteries $1.12 \times 46.5/100$ = 0.521kg	Capillaries $1.12 \times 7/100$ = 0.078kg	Veins $1.12 \times 46.5/100$ = 0.521kg

**Example: The mass of the pulmonary blood of a person is 1.5kg, find: -**

- 1) The mass of this person?
- 2) The mass of his systemic blood?

$$\text{Pulmonary Mass} = \text{Blood Mass} \times 20/100$$

$$1.5 = \text{Blood Mass} \times 20/100$$

$$\text{Blood Mass} = 7.5\text{kg}$$

- 1) The mass of this person: -.....Blood Mass = Body Mass x 7/100

$$7.5 = \text{Body Mass} \times 7/100$$

$$\text{Body Mass} = 107\text{kg}$$

- 2) The mass of his systemic blood: -.....Systemic Mass = Blood Mass x 80/100

$$\text{Systemic Mass} = 7.5 \times 80/100$$

$$\text{Systemic Mass} = 6\text{kg}$$

To the eye blood appears to be a red liquid slightly thicker than water. When examined by various physical techniques it is found to consist of several different components. The red color is caused by the red blood cells (erythrocytes). A nearly clear fluid called blood plasma accounts for the other 55%. The combination of red blood cells and plasma causes blood to have flow properties different from those of a fluid like water.

Beside red blood cells and plasma, there are some important blood components, such as the white blood cells (leukocytes), present in small amounts. White blood cells (~ 9 to 15  $\mu\text{m}$  in diameter) play an important role in combating disease. There are about 8000 white blood cells/ $\text{mm}^3$  of blood. When there is an infection in the body the number of white blood cells (white count) increases. (in one type of blood cancer, leukemia, there is an excessive production of white blood cells.)

The blood also contains platelets (~1 to 4  $\mu\text{m}$  in diameter). Platelets are involved in the clotting function of blood. There are about  $3 \times 10^5$  platelets/ $\text{mm}^3$  of blood.

The blood acts as the transport mechanism for small amounts of hormones that control chemical processes in the body. Certain electrolytes (metal ions) in the blood are crucial to the proper functioning of the body. For example, 100 ml of blood normally contains about 10 mg of calcium.

If the amount of calcium in the blood drops below 4 to 8 mg/100 ml the nervous system cannot function normally and death by tetany (muscle spasm) can result.

The blood and its supply of O<sub>2</sub> are so important to the body that the heart is the first major organ to develop in the embryo. Eight weeks after conception the heart is working to circulate blood to the tissues of the fetus. Since the fetus does not have functioning lungs it must obtain its oxygenated blood from its mother via the umbilical cord.

### **O<sub>2</sub> and CO<sub>2</sub> exchange in the capillary system**

Oxygen and carbon dioxide also diffuse through tissue. The most probable distance D that a molecule will travel after N collisions with other molecules with an average distance λ between collisions is: -

$$D = \lambda \sqrt{N}$$

In tissue the density of the molecules is about 1000 times greater than in air; therefore, λ is much longer in air than in tissue.

A typical value for λ in water, which can serve as a model for tissue, is about 10<sup>-11</sup>m, and a molecule makes about 10<sup>12</sup> collisions/sec. Thus after 1sec in water the most probable diffusion distance is about 10<sup>-5</sup>m or about a factor of 10<sup>3</sup> less than in air.

$$\begin{aligned} D &= \lambda \sqrt{N} \\ &= 10^{-11} \sqrt{10^{12}} = 10^{-11} \times 10^6 = 10^{-5} \text{ m} \end{aligned}$$

This very short diffusion distance is the primary reason that the capillaries in tissue must be very close together.

Not all capillaries are carrying blood at any one time. In resting muscle only 2 to 5% of the capillaries are functional.

Starling's law of capillary describes the flow of fluids into and out of the capillaries.

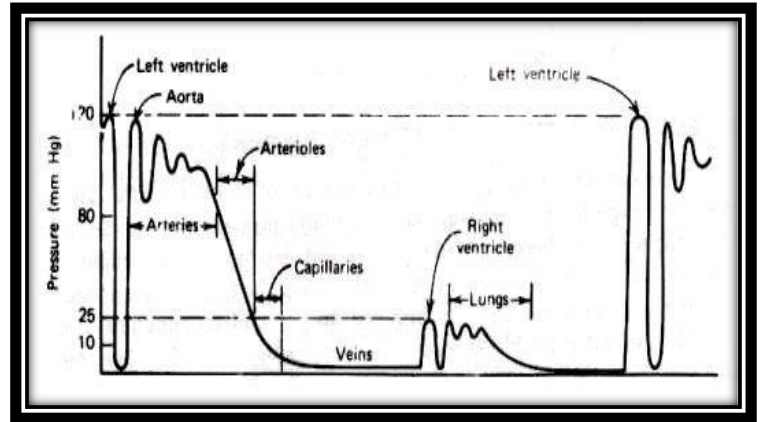
### **Fluid movement through the capillary wall is the result of two pressures: -**

1. The hydrostatic pressure  $\rho$  across the capillary wall forcing fluids out of the capillary.
2. The osmotic pressure  $\pi$  bringing fluids in.

## Work done by the heart

In a typical adult each contraction of the heart muscles forces about 80ml (about one-third of a cup) of blood through the lungs from the right ventricle and a similar volume to the systemic circulation from the left ventricle. In the process the heart does work.

The pressures in the two pumps of the heart are not the same. In the pulmonary system the pressure is quite low because of the low resistance of the blood vessels in the lungs.



The maximum pressure (systole), typically about 25mmHg, is about one-fifth of that in the systemic circulation. In order to circulate the blood through the much larger systemic network the left side of the heart must produce pressures that are typically about 120 mmHg at the peak (systole) of each cardiac cycle. During the resting phase (diastole) of the cardiac cycle the pressure is typically about 80mmHg.

The muscle driving the left ventricle is about three times thicker than that of the right ventricle. In addition, the circular shape of the left ventricle is more efficient for producing high pressure than the elliptical shape of the right ventricle.

The work done  $W$  by a pump working at a constant pressure  $P$  is equal to the product of the pressure and the volume pumped  $\Delta V$ , or  $W=P\Delta V$ . We can estimate the physical work done by the heart by multiplying its average pressure by the volume of blood that is pumped.

Actually the pumping action takes place in less than one-third of the cardiac cycle and the heart muscle rests for over two-thirds of the cycle.

**\* The heart rate of a person is 120 pulse/min; calculate the action time and the resting time of heart muscle.**

$$120\text{pulse}/1\text{min} = 120\text{pulse}/60\text{sec}$$

$$2\text{pulse}/1\text{sec} = 1\text{pulse}/0.5\text{sec}$$

$$1 \text{ pulse} = 1/3 \text{ contraction} + 2/3 \text{ relaxation}$$

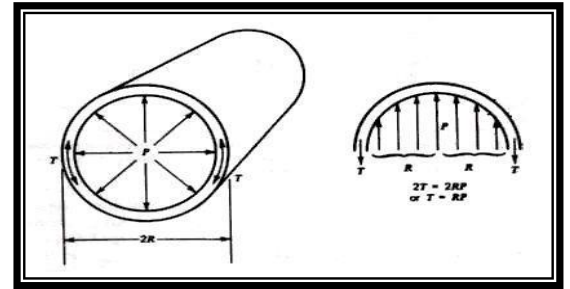
$$0.5 \times 1/3 = 0.17 \text{ sec (the time of contraction)}$$

$$0.5 \times 2/3 = 0.33 \text{ sec (the time of relaxation)}$$

### Pressure across the blood vessel wall (Transmural Pressure)

The greatest pressure drop in the cardiovascular system occurs in the region of the arterioles and capillaries. The capillaries have very thin walls ( $\sim 1 \mu\text{m}$ ) that permit easy diffusion of  $\text{O}_2$  and  $\text{CO}_2$

In order to understand why they do not burst we must discuss the law of Laplace, which tells us how the tension in the wall of a tube is related to the radius of the tube and the pressure inside the tube.



Consider a long tube of radius  $R$  carrying blood at pressure  $P$ . We can calculate the tension  $T$  in the wall ( $T=RP$ ).

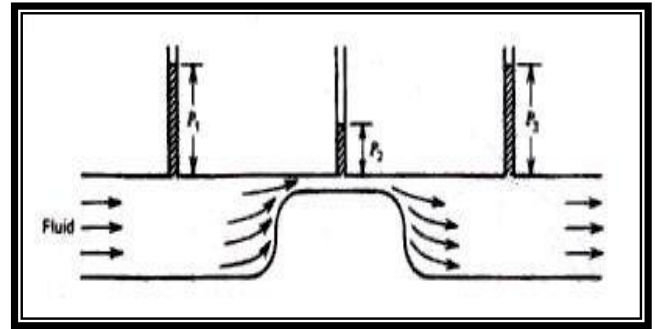
For example, the tension in the wall of the aorta is about 156,000 dynes/cm while the tension in a capillary wall is only about 24 dynes/cm. For comparison, a single layer of toilet tissue can withstand a tension of about 50,000 dynes/cm before tearing. This tension is about 3000 times greater than that the capillary has to withstand.

### Bernoulli's principle applied to the cardiovascular system

Whenever there is a rapid flow of a fluid such as water, the pressure is reduced at the edge of the rapidly moving fluid.

Bernoulli's principle is based on the law of conservation of energy. Pressure in a fluid is a form of potential energy PE since it has the ability to perform useful work. In a moving fluid there is kinetic energy KE due to the motion. This kinetic energy can be expressed as energy per unit volume such as ergs per cubic centimeter.

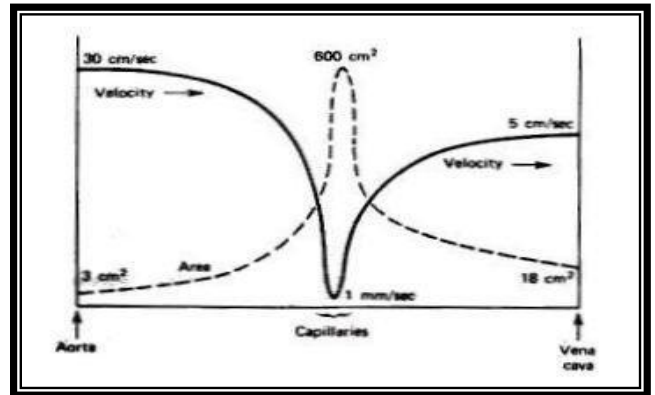
If fluid is flowing through the frictionless tube, the velocity increases in the narrow section and the increased kinetic energy KE of the fluid is obtained by a reduction of the potential energy PE of the pressure in the tube.



As the velocity reduces again on the far side of the restriction the kinetic energy is converted back into potential energy and the pressure increases again as indicated on the manometers.

### How fast does your blood flow?

As the blood goes from the aorta into the smaller arteries and arterioles with greater total cross-sectional areas the velocity of the blood decreases much as the velocity of a river decreases at a wide portion.



Notice that the blood velocity is related in an inverse way to the total cross-sectional area of the vessels carrying the blood. The velocity equals the flow rate divided by the cross-sectional area. The average velocity in the aorta is about 30 cm/sec; that in a capillary is only about 1 mm/sec. It is in the capillaries that the exchange of  $O_2$  and  $CO_2$  takes place, and this low velocity allows time for diffusion of the gases to occur.

### Blood Viscosity

You are undoubtedly aware of the characteristic of a liquid called viscosity ( $\eta$ ). The viscosity of water is about  $10^{-3}$  Pa s at  $20^\circ C$  [where  $1 \text{ Pa s} = 1 \text{ N s/m}^2 = 1 \text{ kg/(m s)}$  In the SI system ]. The viscosity of blood is typically  $3 \times 10^{-3}$  to  $4 \times 10^{-3}$  Pa s but depends on the percentage of red blood cells in the blood.

### Blood Flow

Poiseuille's law states that the flow through a given tube depends on the pressure difference from one end to the other ( $P_A - P_B$ ), the length  $L$  of the tube, the radius  $R$  of the tube, and the viscosity  $\eta$  of

the fluid. When all of these variables are put together with a constant to keep the units working correctly we get Poiseuille's equation: -

$$\text{Flowrate} = (P_A - P_B) \left(\frac{\pi}{8}\right) \left(\frac{1}{\eta}\right) \left(\frac{R^4}{L}\right)$$

In SI units the flow rate will be in cubic meters per second if  $P_A - P_B$  is in Newtons per square meter,  $\eta$  is in Pa s, and R and L are in meters.

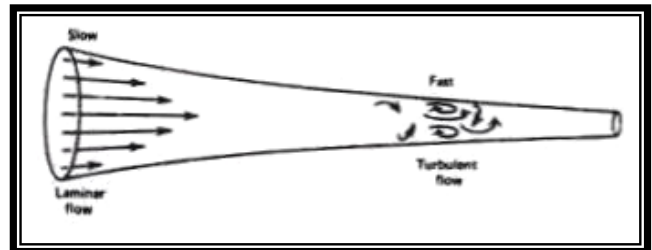
### Blood flow-laminar and turbulent

You have probably seen both a slow, smooth, quietly flowing river and a rapid, turbulent, noisy river.

- The first type of river is analogous to the laminar or streamline flow that is present in most blood vessels.
- The second is similar to the turbulent flow found at a few places in the circulatory system, for example, where the blood is flowing rapidly past the heart valves.

An important characteristic of laminar flow is that it is silent. If all blood flow were laminar, information could not be obtained from the heart with a stethoscope. The heart sounds heard with a stethoscope are caused by turbulent flow. During a blood pressure measurement, the constriction produced by the pressure cuff on the arm produces turbulent flow and the resulting vibrations can be detected with a stethoscope on the brachial artery.

If you gradually increase the velocity of a fluid flowing in a tube by reducing the radius of the tube, it will reach a critical velocity  $V_c$  when laminar flow changes into turbulent flow.



The critical velocity will be lower if there are restrictions or obstructions in the tube. Osborne Reynolds determined that the critical velocity is proportional to the viscosity  $\eta$  of the fluid and is inversely proportional to the density  $\rho$  of the fluid and the radius R of the tube,  $V_c = K\eta/\rho R$ . The constant of proportionality K is called the Reynold's number, and it is approximately equal to 1000



for many fluids, including blood, flowing in long straight tubes of constant diameter. If there are bends or obstructions the Reynold's number becomes much smaller.

**\* Find the kinetic energy (KE) of 2gm of blood leaving aorta of radius 1.2cm.**

$$\begin{aligned}KE &= mv^2 / 2 \\KE &= 1/2 \times \text{mass} \times (\text{velocity})^2 \\V_c &= \frac{K\eta_{\text{blood}}}{\rho R} \\&= \frac{1000 \times 3.5 \times 10^{-3}}{1.04 \times 10^3 \times 1.2 \times 10^{-2}} \\&= 0.28 \text{ m / sec} \\KE &= 1/2 \times 0.002 \times (0.28)^2 \\&= 8 \times 10^{-5} \text{ joule}\end{aligned}$$

### **Blood Cells Distribution:**

The red blood cells in the artery are not distributed uniformly; there are more in the center than at the edges. This produces two effects.

- 1- When blood enter a small vessel from the side of a main vessel the percentage of red blood cells in that blood (the hematocrit) will be slightly less than in the blood in the main vessel because of the “skimming” effect.
- 2- The second effect is more important. Because the plasma along the vessel walls is moving more slowly than the red blood cells, the blood in the extremities has a greater percentage of red blood cells than when it left the heart. This causes an increase in the hematocrit in the hands and feet of approximately 10% over the hematocrit of the whole blood. This effect is of some importance when blood volume is measured by the radioisotope dilution technique.

### **Heart sounds**

The heart sounds heard with a stethoscope are caused by vibrations originating in the heart and the major vessels. The opening and closing of the heart valves contribute greatly to the heart sounds; turbulent flow occurs at these times and the vibrations produced are often in the audible range.

Other sounds may be heard if the heart is not normal. Murmurs may be produced if there is a constriction that causes turbulent flow during part of the cardiac cycle.

For example. If the aortic valve is narrow (aortic valve stenosis) blood flow through it during systole will cause a murmur

The amount and quality of the sound heard depend on:

- 1- The design of the stethoscope
- 2- The pressure of stethoscope on the chest
- 3- The stethoscope location
- 4- The orientation of the body
- 5- The phase of the breathing cycle.

### **The physics of some cardiovascular diseases**

Because of the many physical aspects of the cardiovascular system, heart diseases often have a physical component. Many of these diseases, for example, increase the work load of the heart or reduce its ability to work at a normal rate.

The work done by the heart is roughly the tension of the heart muscle and times how long it acts. Anything that increases the muscle tension or how long it acts will increase the work load of the heart. For example, high blood pressure (***hypertension***) causes the muscle tension to increase in proportion to the pressure. A fast heart rate (***tachycardia***) increases the work load since the amount of time the heart muscles spend contracting increases.

To reduce the work load of the heart, bed rest and O<sub>2</sub> therapy are prescribed. Giving O<sub>2</sub> increases the O<sub>2</sub> in the blood so that less blood must be pumped to the tissues.

Other heart diseases such ***Heart valve defects***

#### **types of the Heart valve defects: -**

- Stenosis: - the valve does not open wide enough. In stenosis the work of the heart is increased because a large amount of work is done against the obstruction of the narrow opening, and the blood supply to the general circulation is reduced.
- Insufficiency: - the valve does not close well enough. In insufficiency some of the pumped blood flows back into the heart so that the volume of the circulated blood is reduced.

Man-made device that has helped heart patients is the artificial heart valve.

The heart disease that causes the most deaths is heart attack. A heart attack is caused by a blockage of one or more arteries to the heart muscle. That portion of the heart muscle without a blood supply dies (the infarct). The blockage does not always immediately affect the electrical signals that control the heart's beating action. And thus a person who has recently had a heart attack may still have normal electrocardiogram (ECG). During and after a heart attack the ability of the heart muscle to pump blood to the body is seriously impaired.

To deduce the work load of the heart, bed rest and O<sub>2</sub> therapy are prescribed.

### **The functions of the blood**

1. Red blood cells carry oxygen from the lungs to the tissues and carbon dioxide from the tissues to the lungs.
2. Blood plasma transports antibodies, which protect the body from infection, carries food substances absorbed from the intestines and takes waste products to the kidneys for excretion. It also transports hormones, secreted by endocrine glands, to their sites of action.
3. Clotting factors circulating in the plasma prevent blood loss whenever blood vessels are damaged or broken.
4. Blood also regulates the water content of tissue cells.
5. Blood buffers, chemicals within the blood, maintain the correct acidity of body fluids.
6. Enzymes may be transported by blood plasma, which also distributes the heat produced by metabolism.