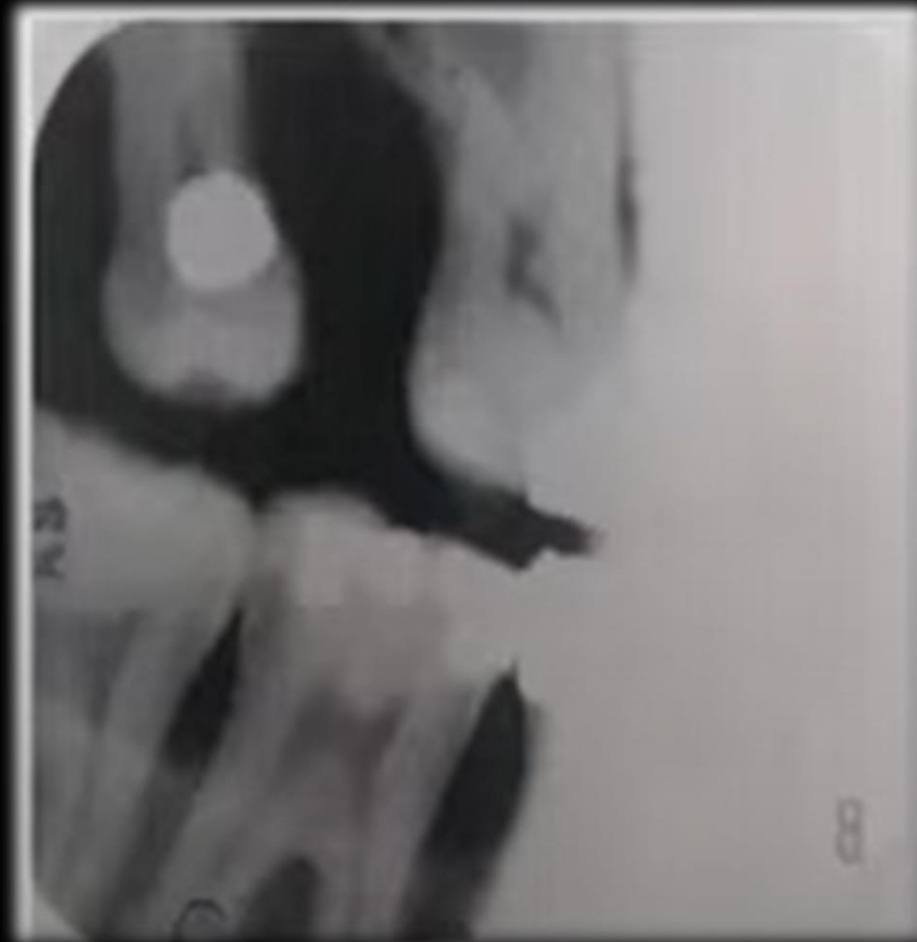


Common Radiographical Errors

Dr. Sana'a Jamal

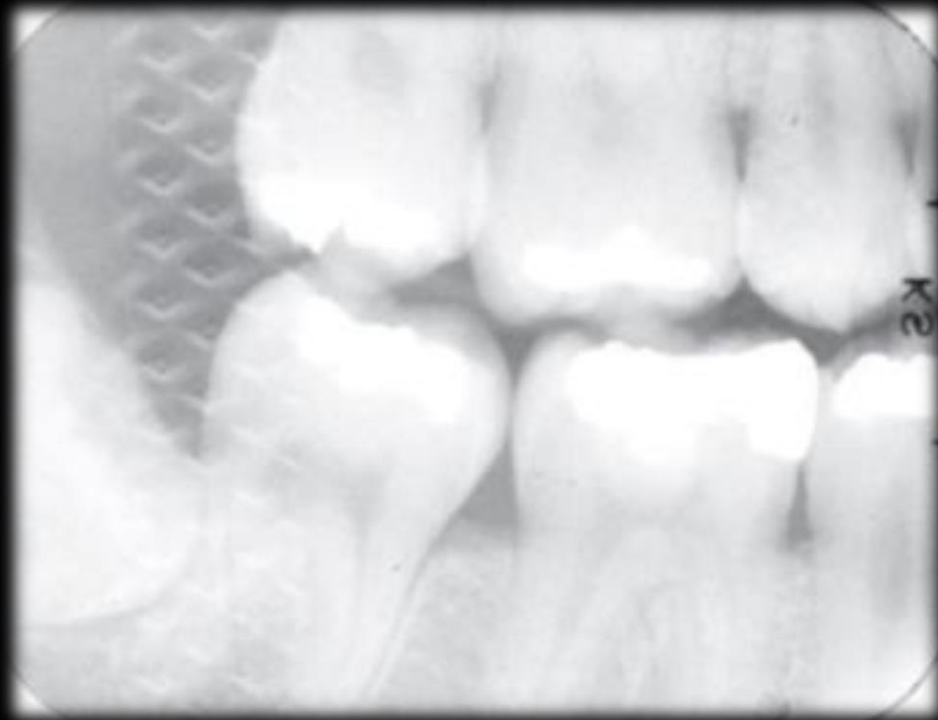
Cone cut

unexposed area result from positioning fault when the x-ray beam not completely cover the film during exposure



Back side exposure

When the film placed in wrong position making the non exposure side facing the beam, the result is the image with the pattern of the lead foil is evident



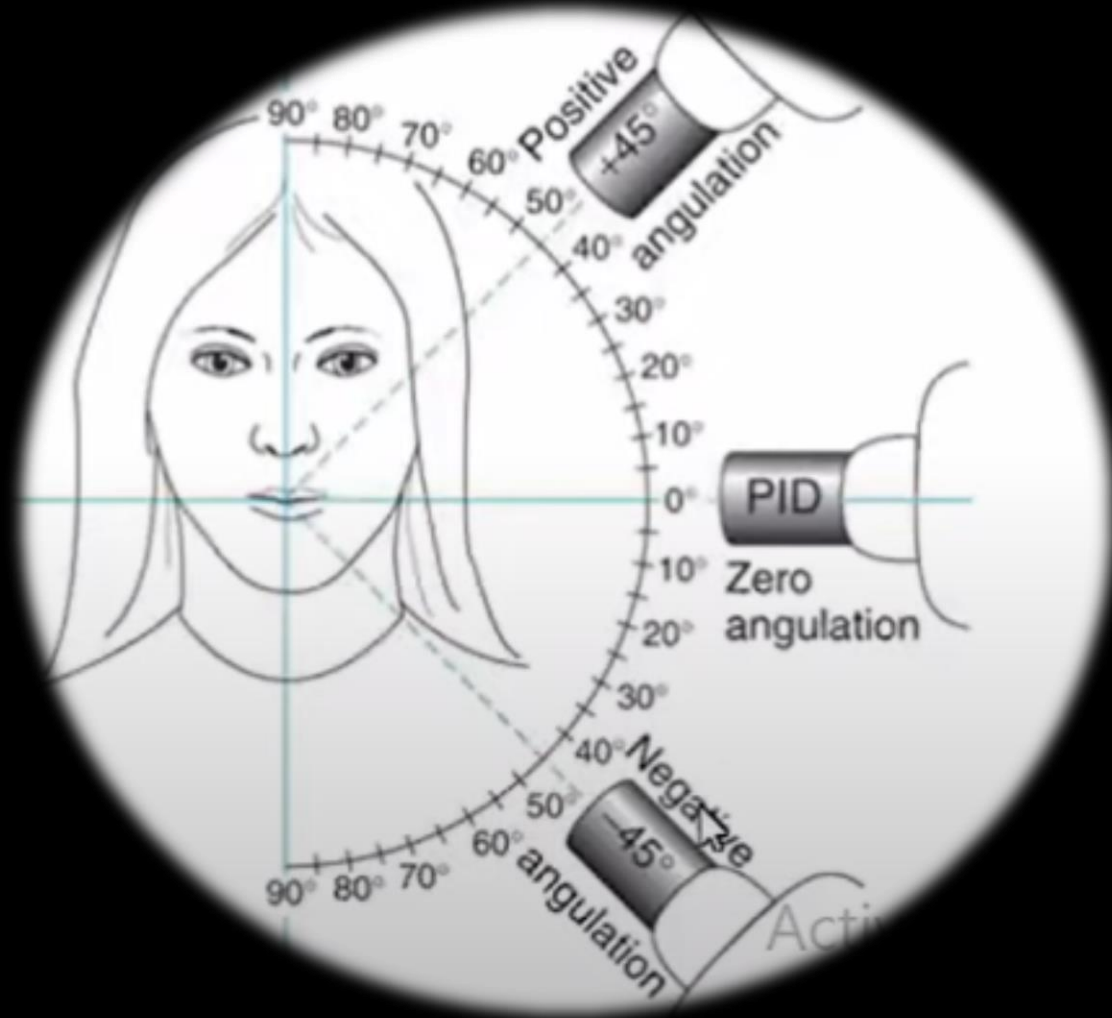
Double exposure

The same X-ray film used and exposed twice to X-ray this result in excessive dense and blurred image



Elongated image

Vertical angulation of X – ray tube was too shallow



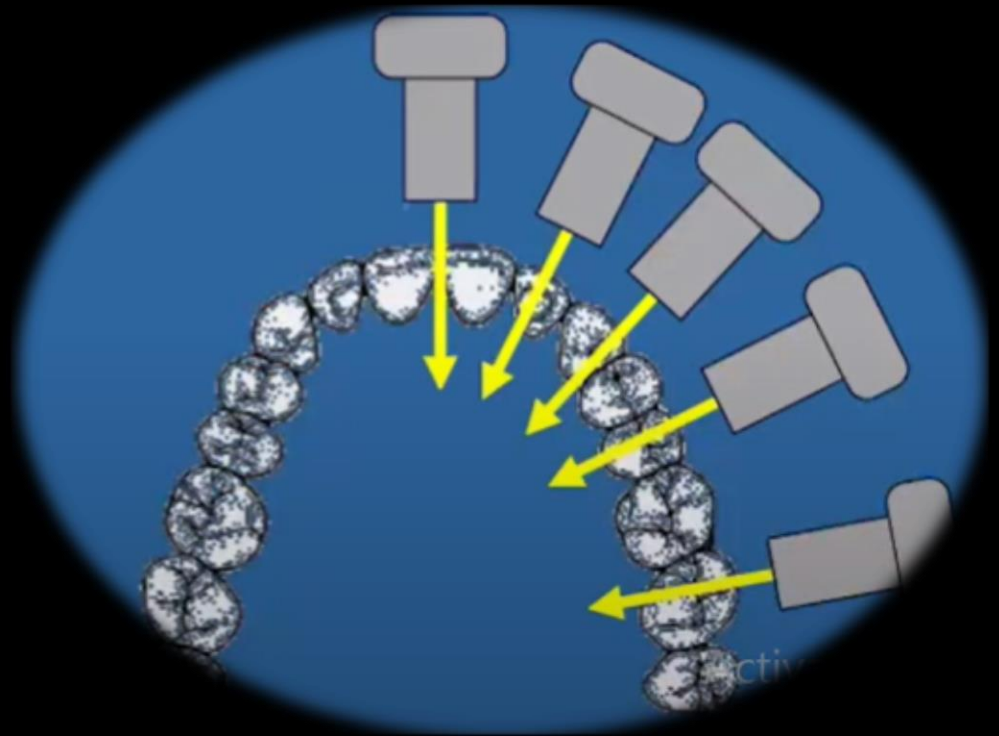
Shortened image

Vertical angulation was too steep



Over lapping of adjacent structures

When horizontal angulations was incorrect



Blurred film

Due to excessive bending of the film during placement for exposure



Blank image

When the film didn't receive radiation, so the film appear totally clear



Pale X-ray film

This due to either under exposure, or under developing



Dark X-ray film

This due to either over exposure, or over development



Undeveloped area

This appear as clear area caused by incomplete immersion of the film in developer (Sometime called developer cut-off) or sticking the film in the developer to the side of the tank.



Scratched film

When the film is processed in manual processor, the soft emulsion is easily scratched due to rough handling of the film, ex. Scratched by holder, tank or nails.



Developer Spot

Black dots or Dark spots on the film caused by drops of developer solution that was accidentally spilled on the film before it was developed.



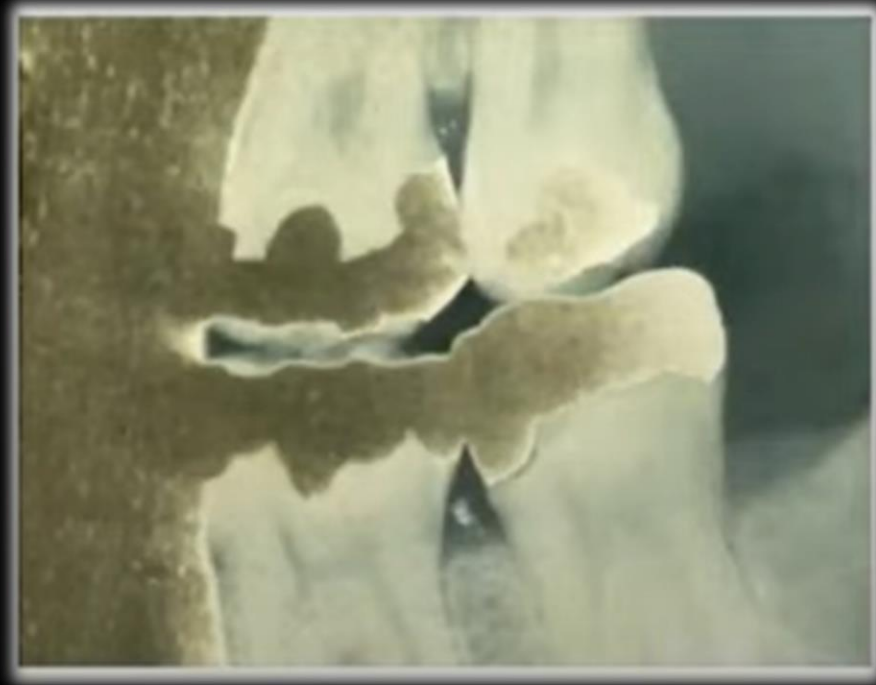
Fixer drop

White dots or light spots on the film caused by drops of fixer solution that was accidentally spilled on the film before it was developed



Yellow or brown stain

Stain or discoloration of film due to contaminated solution or insufficient washing





Thank You