

# HEMOSTASIS

PHYSIOLOGY LAB-6

APRIL ,2018

ASST. LEC. ZAKARIYA A. MAHDI

# HEMOSTASIS

## ► DEFINITION

- *Heme = blood*
- *stasis = to stop*

► It is the **process of forming clots in the wall of damaged blood vessels & preventing blood loss** while maintaining blood in a fluid state within the vascular system.

► Defects in hemostasis can lead to an increased risk of bleeding (hemorrhage) or clotting (thrombosis).

# *Stages of Hemostasis*

```
graph TD; A[Stages of Hemostasis] --> B[Vascular Constriction]; A --> C[Formation of Platelet Plug]; A --> D[Formation of blood clot]; A --> E[Fibrinolysis];
```

*Vascular Constriction*

*Formation of Platelet Plug*

*Formation of blood clot*

*Fibrinolysis*

# Events in Hemostasis

## ► Vascular Constriction

- Damaged blood vessels constrict

## ► Formation of platelet Plug

- Platelets adhere to damaged endothelium to form platelet plug (*primary hemostasis*).

## ► Blood Coagulation

- Clots form upon the conversion of fibrinogen to Fibrin, and its addition to the platelet plug (*secondary hemostasis*).

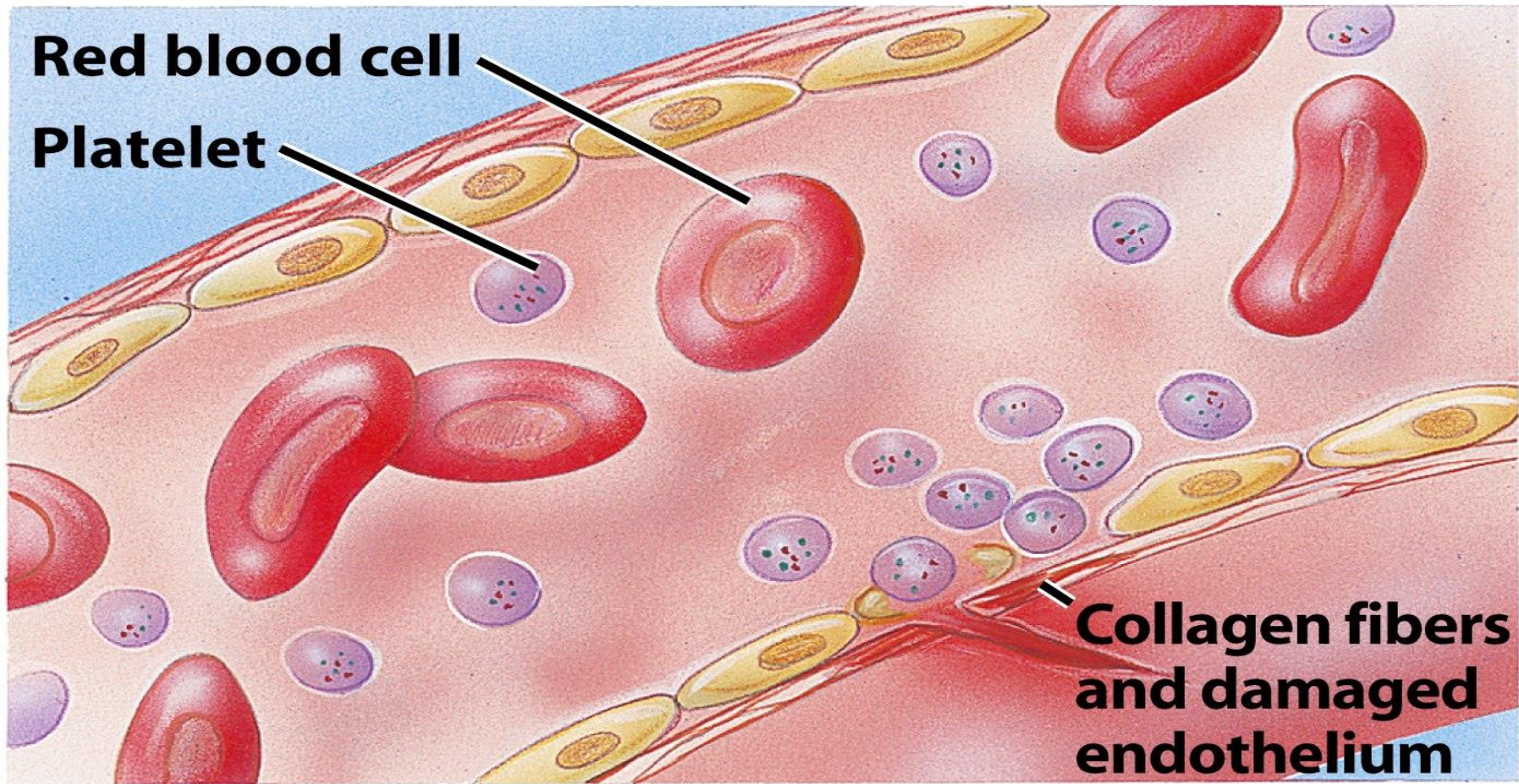


# 2- STAGES OF PRIMARY HEMOSTASIS

- *Platelet Adhesion*
- *Platelet Activation*
- *Platelet Aggregation*



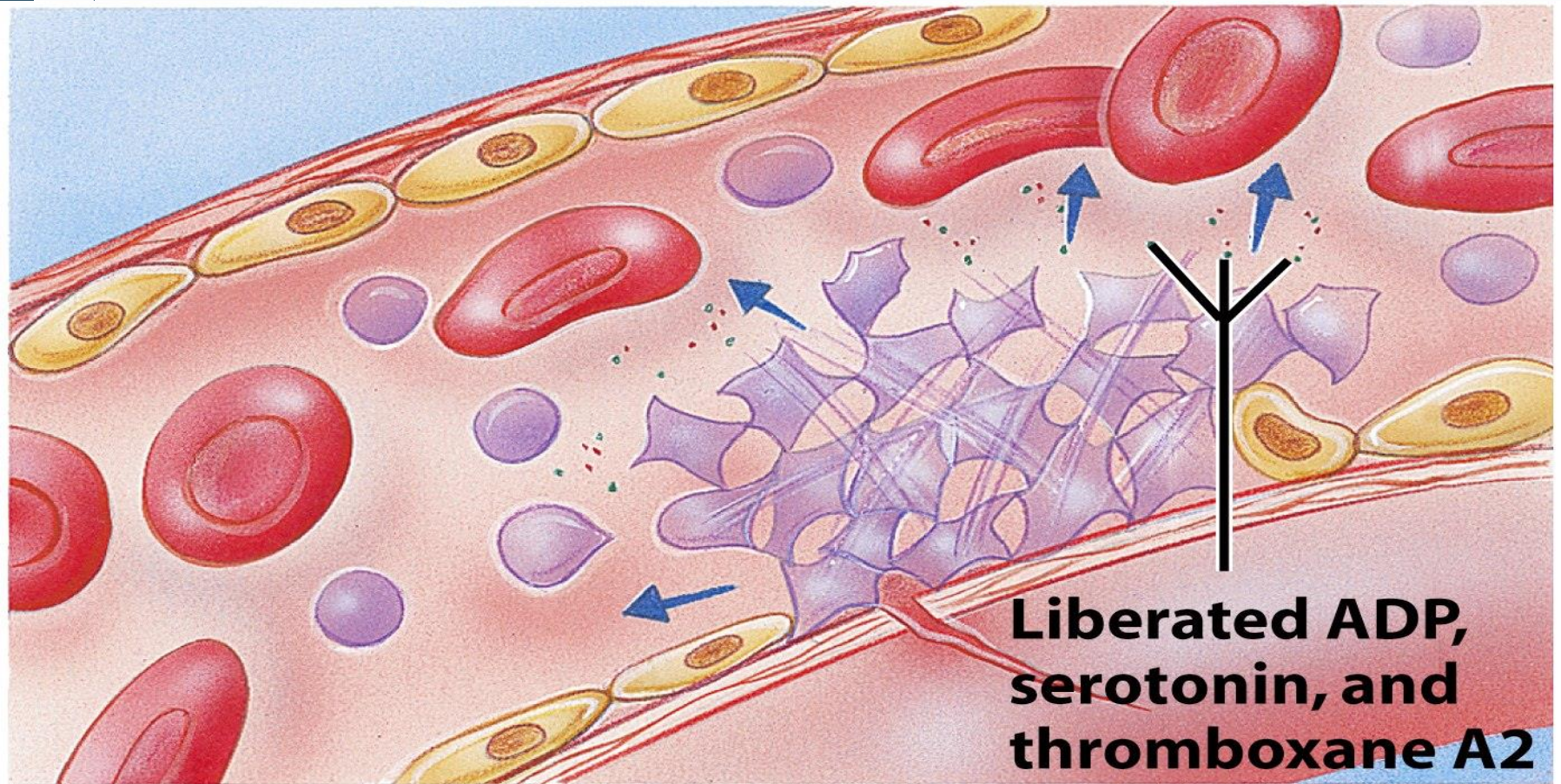
# platelet adhesion



## 1 Platelet adhesion



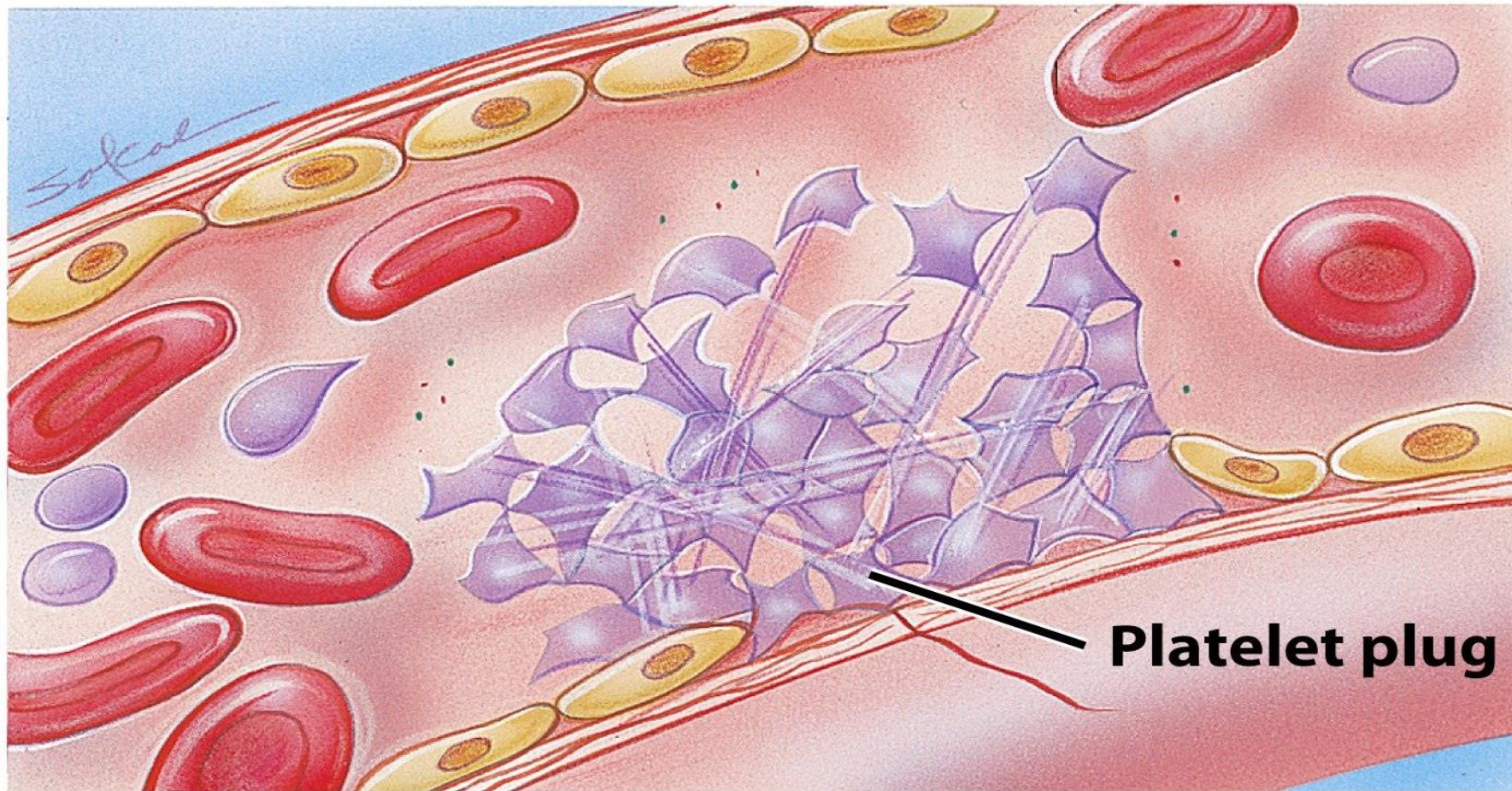
# Platelet activation : platelet release action



## 2 Platelet release reaction



# Platelet aggregation



## 3 Platelet aggregation



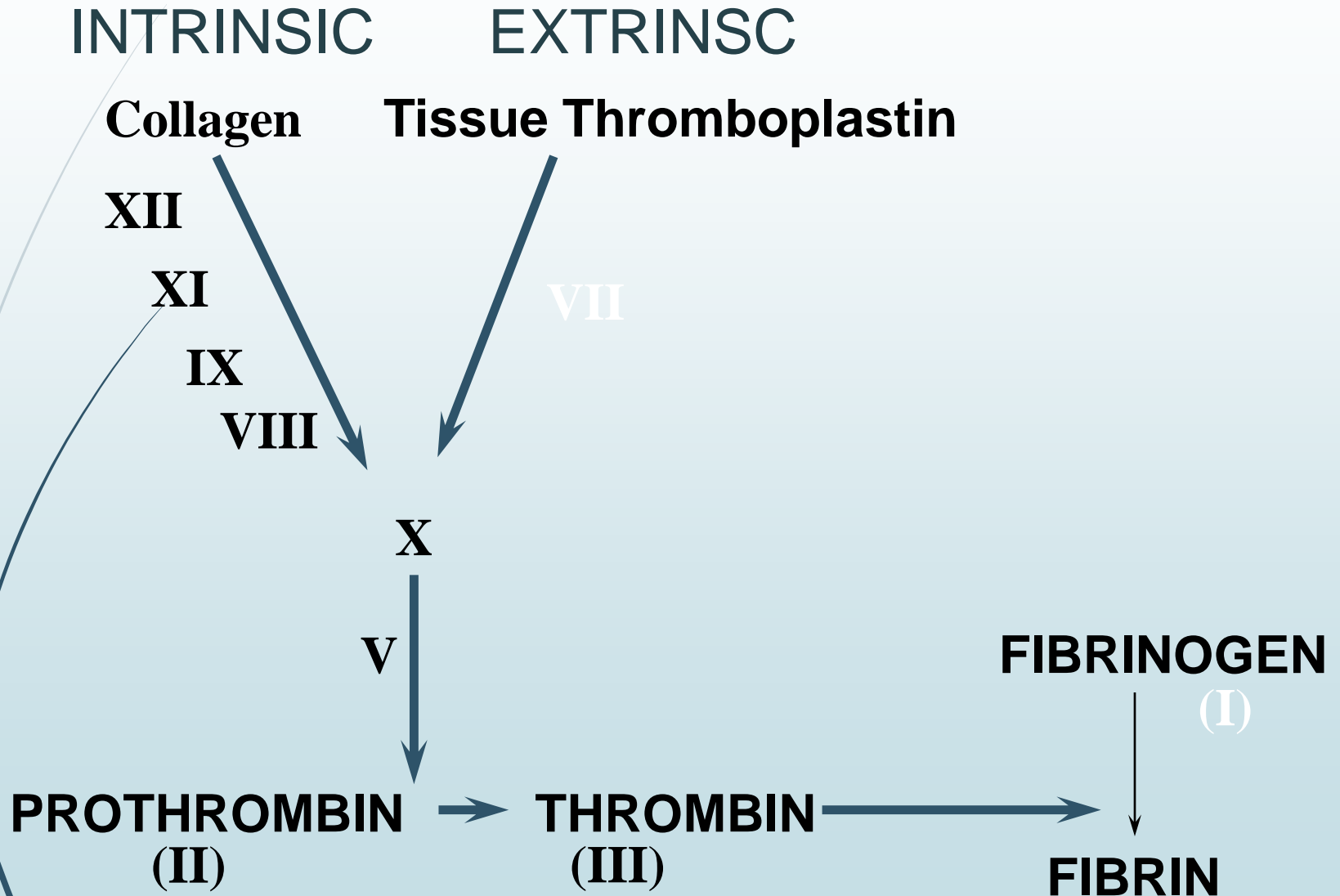
# 3- Secondary hemostasis

- ▶ If there is a large hole in the blood vessel, a blood clot is additionally required.

## ▶ *Cascade of reactions*

It states that '**inactive**' enzymes are **activated**, and the '**activated**' enzymes in turn **activates other inactive enzymes** until final step is reached.

# THE CLOTTING MECHANISM





## 4-FIBRINOLYTIC PHASE

- ▶ The fibrinolytic system does not allow the fibrin clot to grow and block a vessel, which would cause serious complications. The dissolution of a clot, called fibrinolysis (dissolving of fibrin fibers), is brought about by the formation of the active enzyme plasmin from **plasminogen**

# HEMOSTASIS

DEPENDENT UPON:

- ▶ Vessel Wall Integrity
- ▶ Adequate Numbers of Platelets
- ▶ Proper Functioning Platelets
- ▶ Adequate Levels of Clotting Factors
- ▶ Proper Function of Fibrinolytic Pathway





# So What Causes Bleeding Disorders?

□ VESSEL DEFECTS

□ PLATELET DISORDERS

□ FACTOR DEFICIENCIES

# METHOD OF STUDY

## ► HEMOSTATIC FUNCTION TESTS

- Bleeding time
- Clotting time
- Prothrombin time
- Partial prothrombin time
- Thrombin time





# Note

- ▶ The BT and CT are two **simple tests** that are used as a routine **before every minor and major surgery** (e.g. tooth extraction), biopsy procedures, and before and during anticoagulant therapy, whether or not there is a history of bleeding.

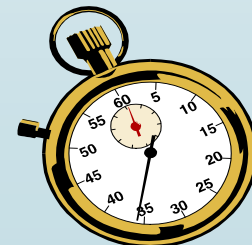
# 1-BLEEDING TIME (B.T)

## Definition:

is the time interval between the skin puncture and spontaneous, unassisted (i.e. without pressure) stoppage of bleeding. The BT test is an *in vitro* test of platelet function.

*Purpose:* to detect qualitative defects of platelets.

Normal bleeding time ; 1 – 5 min.



# Bleeding Time

## ► **Medical applications:**

The prolongation of bleeding time may be due to:

1. Defects in the blood vessels
2. Decrease number of platelets (thrombocytopenia)
3. Defect in the function of the platelets caused by:-
  - drugs (aspirin, NSAIDs, Anti coagulants, Sulfonamides, Diuretics, etc.)
  - Inherited diseases (VON WILLEBRAND'S DISEASE.



# Bleeding Time

## Materials and methods

- ▶ Lancet
- ▶ Stop watch
- ▶ Circular filter paper
- ▶ Alcohol



# Bleeding Time

## Materials and methods

- A disposable lancet is used to make cut into the finger usually.
- A stopwatch is started immediately and every 30 seconds filter paper is used to draw off the blood.
- The time from when the incision is made until all bleeding has stopped is called the bleeding time.
- The test is finished when bleeding has stopped completely.
- Count the number of blood spots and express your result in minutes and seconds.

## 2-PROTHROMBIN TIME

- Measures Effectiveness of the Extrinsic Pathway.
- Normal ratio 0.9-1.2



## 3- PARTIAL THROMBOPLASTIN TIME

- Measures Effectiveness of the Intrinsic Pathway and common pathway

NORMAL VALUE

25-35 SECS



# 4-Thrombin Time (TT)

- ▶ Time to clot formation after addition of thrombin to citrated blood
- ▶ Normal value : less than 15 seconds





## 5-CLOTTING TIME ( C.T )

### (COAGULATION TIME)

❖ Definition :

is the time interval between the entry of blood into the glass capillary tube, or a syringe, and formation of fibrin threads

❖ Normal Clotting Time : 3 – 6 min.

❖ Prolonged clotting time is due to **severe deficiency** of any of the **coagulation proteins**.

❖ Weak friable clot called hypofibrinogenaemia.

❖ Method : **capillary tube method.**

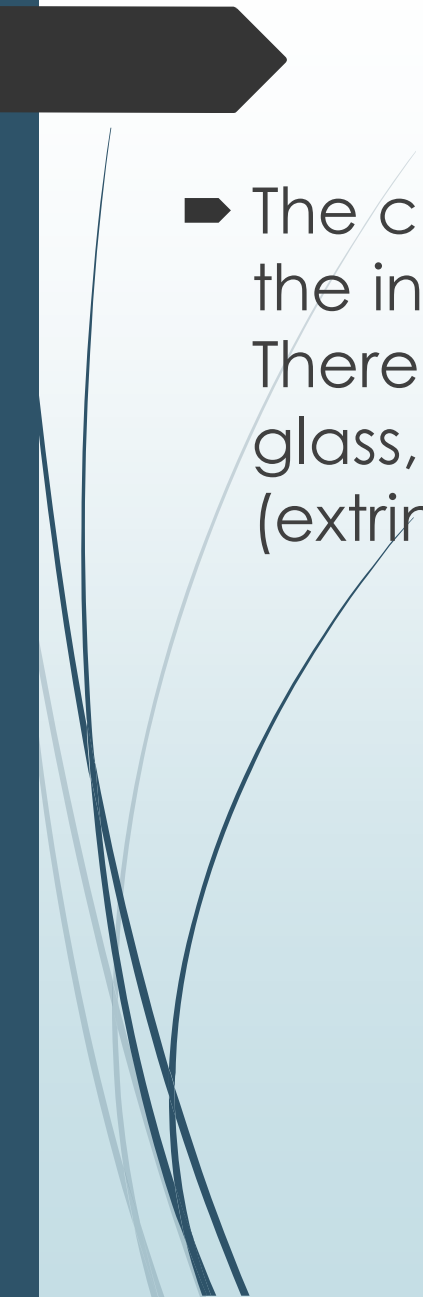
# Clotting time - capillary method

## ➤ *Material*

1. Sterile disposable pricking lancet.
2. Stop watch
3. Dry capillary tube (non heparinized)
4. Cotton Swab .
5. 70 % ethyl alcohol

# Clotting time - capillary method

- Clean your finger with alcohol
- Prick the finger by a lancet and note the time using a stop watch
- Load a capillary tube to at least  $\frac{1}{2}$  full
- After about 2 mins, take the loaded capillary tube between your thumb and forefingers and gently break in half
- Slowly pull the ends part to see the insoluble fibrin strands
- Do a break every 30 sec, once the clot is formed we record the time

- 
- A dark grey arrow points to the right from the left edge of the slide. Several thin, light blue lines curve upwards from the bottom left corner towards the text.
- ▶ The clotting of blood with this method involves both the intrinsic and the extrinsic systems of clotting. There is injury to the blood (coming in contact with glass, intrinsic pathway), and the injury to the tissues (extrinsic pathway).



A decorative graphic on the left side of the slide. It features a dark grey arrow pointing to the right at the top. Below the arrow, several thin, light blue lines curve downwards and to the left, creating a stylized, abstract shape.

**The coagulation time is increased in the following conditions:**

**1. Hemophilias**

**2. von Willebrand disease.**

**3. Afibrinogenemia and dysfibrinogenemia**


**4. Vitamin K deficiency**

it acts a cofactor in the synthesis of prothrombin, and factors VII, IX and X

**5. Liver diseases**

**6. Anticoagulant therapy.** Patients receiving heparin or warfarin show an increased CT.

**7 .Newborns.** Newborns, especially premature babies sometimes have a tendency to bleed because the plasma levels of certain factors are low

A dark grey arrow points to the right from the left edge of the slide. Below it, several thin, light blue lines curve upwards and to the right, resembling stylized grass or reeds.

**WHY BLOOD DOES NOT CLOT IN  
CIRCULATION ?**

**Thank you**