

الرسم المعماري

المرحلة الاولى

د. عامر حبيب السوداني

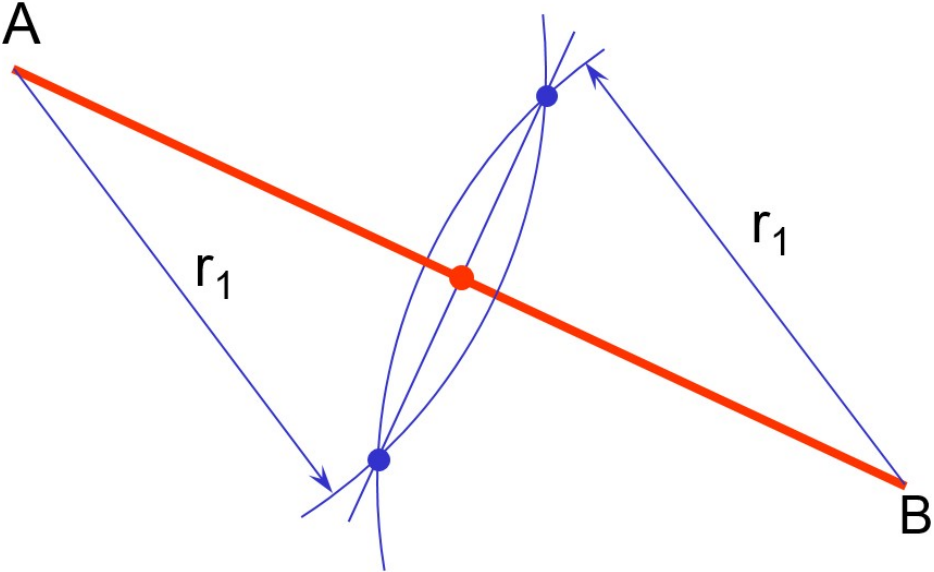
عمليات الانشاء الهندسي

Geometry Construction I

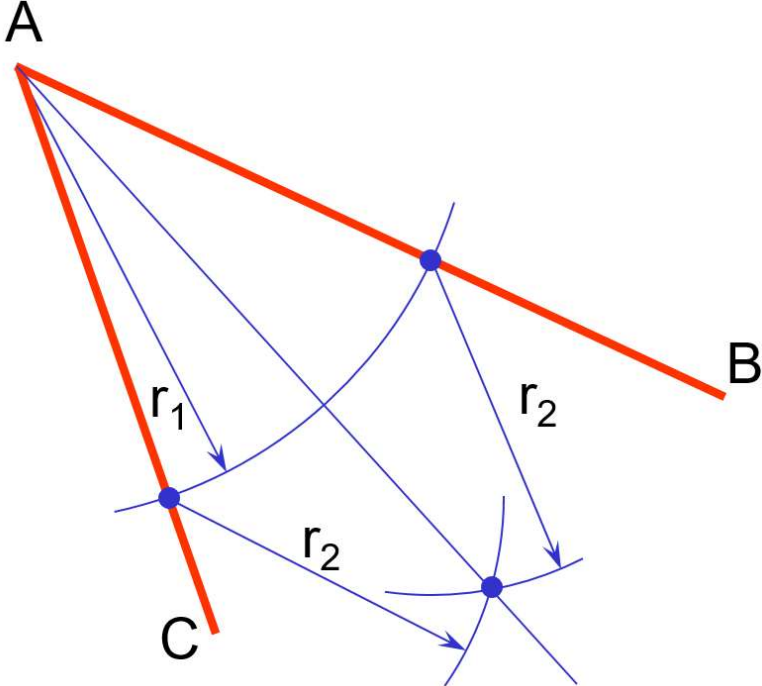
قسم هندسة العمارة



# To Bisect a Line

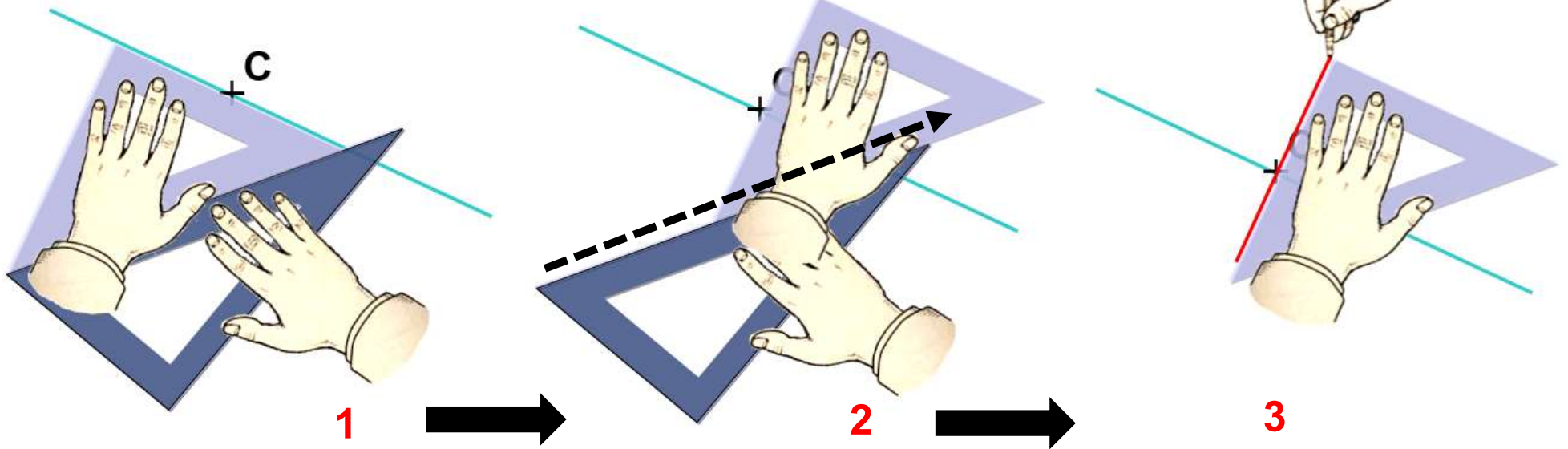


# To Bisect an Angle



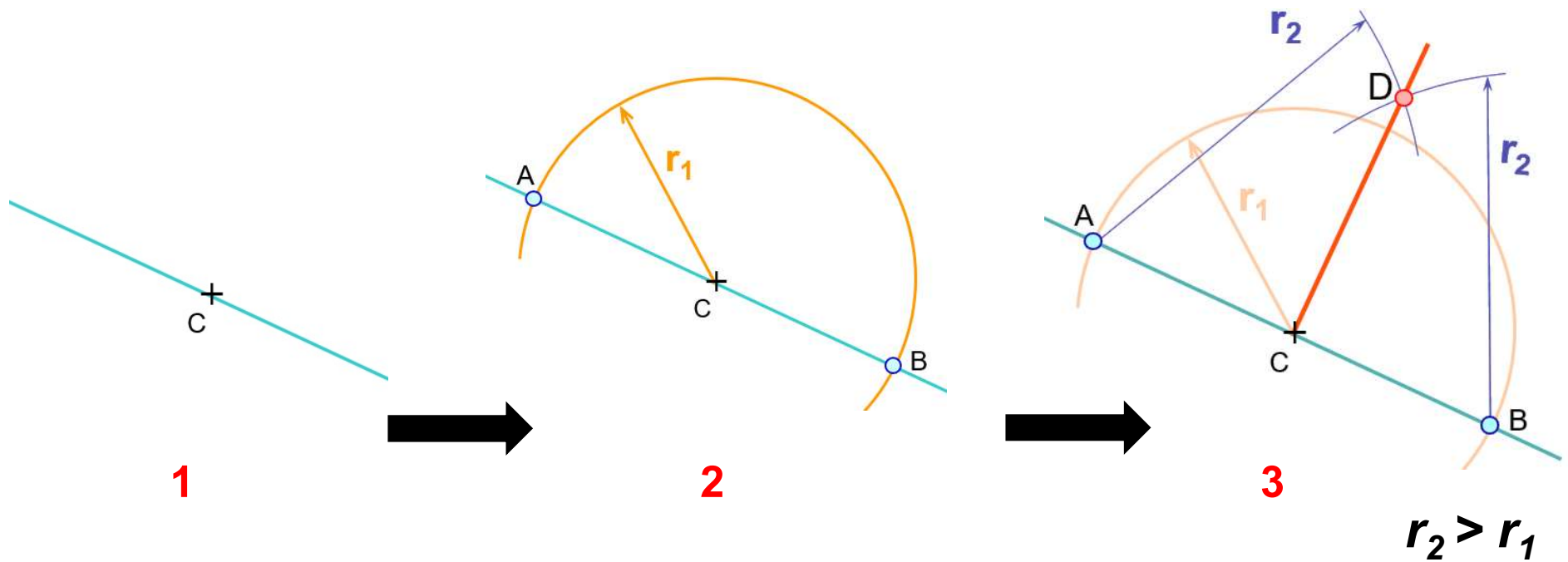
# To draw the line perpendicular to a given line at a given point

Adjacent-sides method



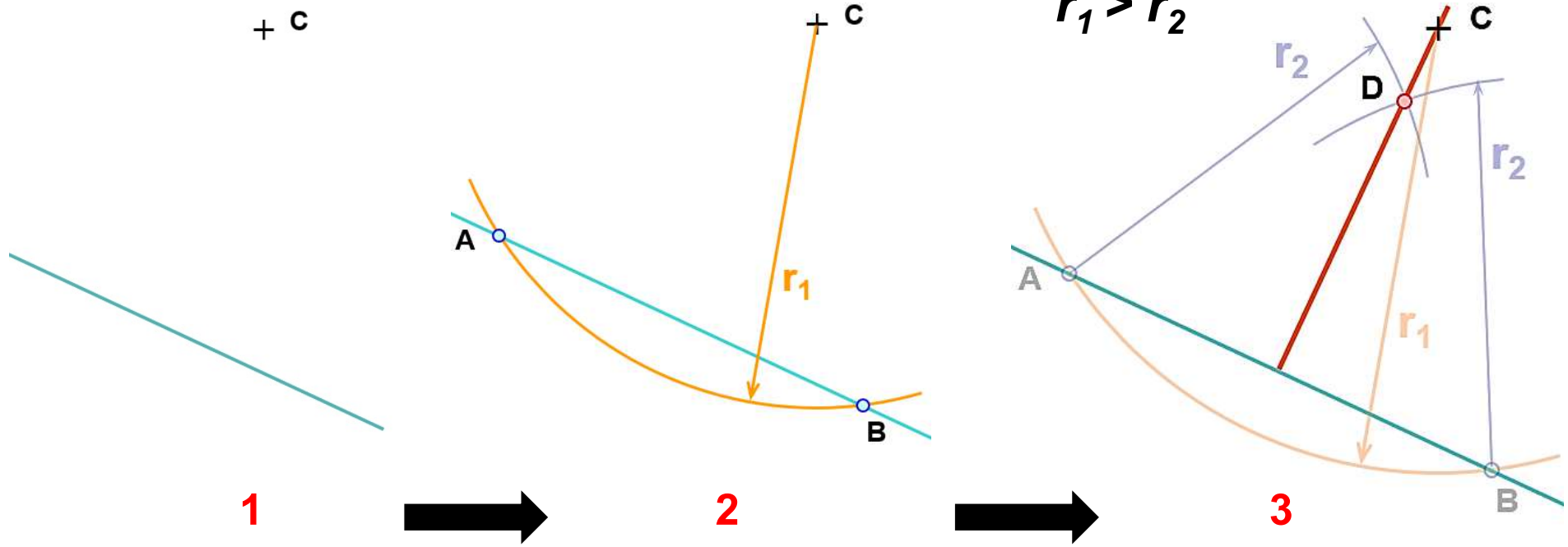
To draw the line perpendicular to a given line at a given point. follow these steps.

Using Compass

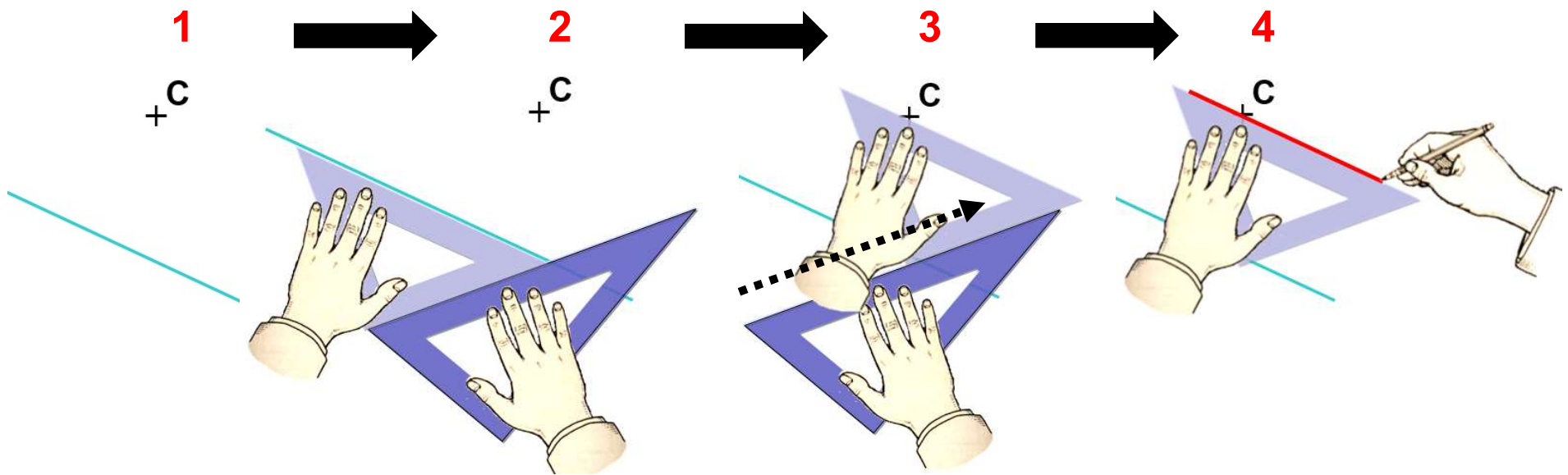


To draw the line perpendicular to a given line from a point not on the line, follow these steps.

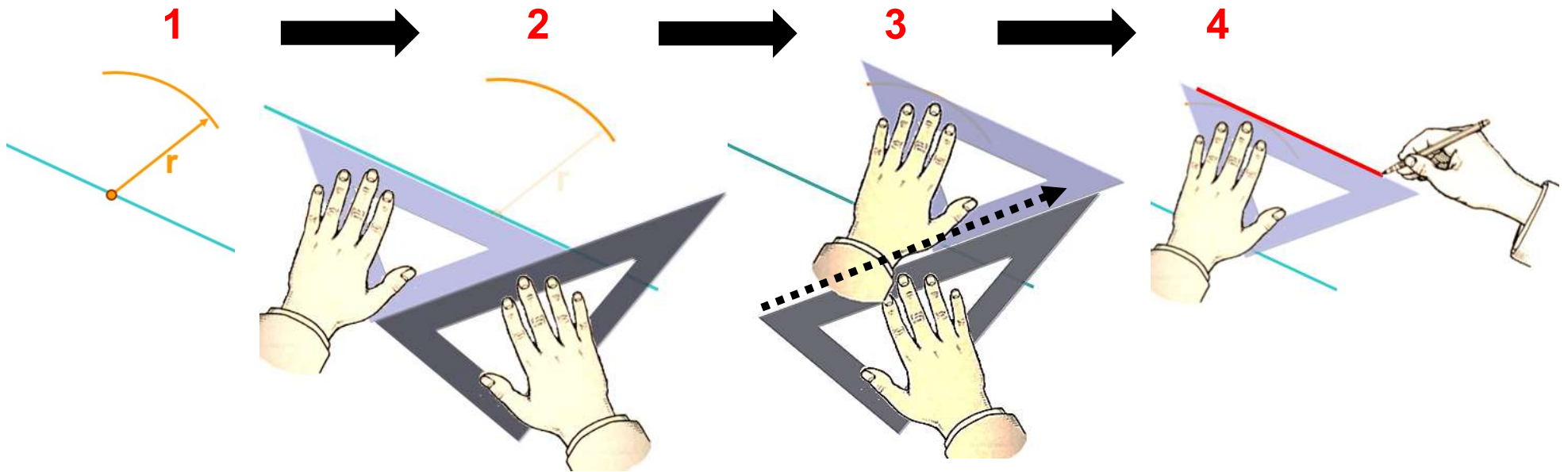
Using Compass



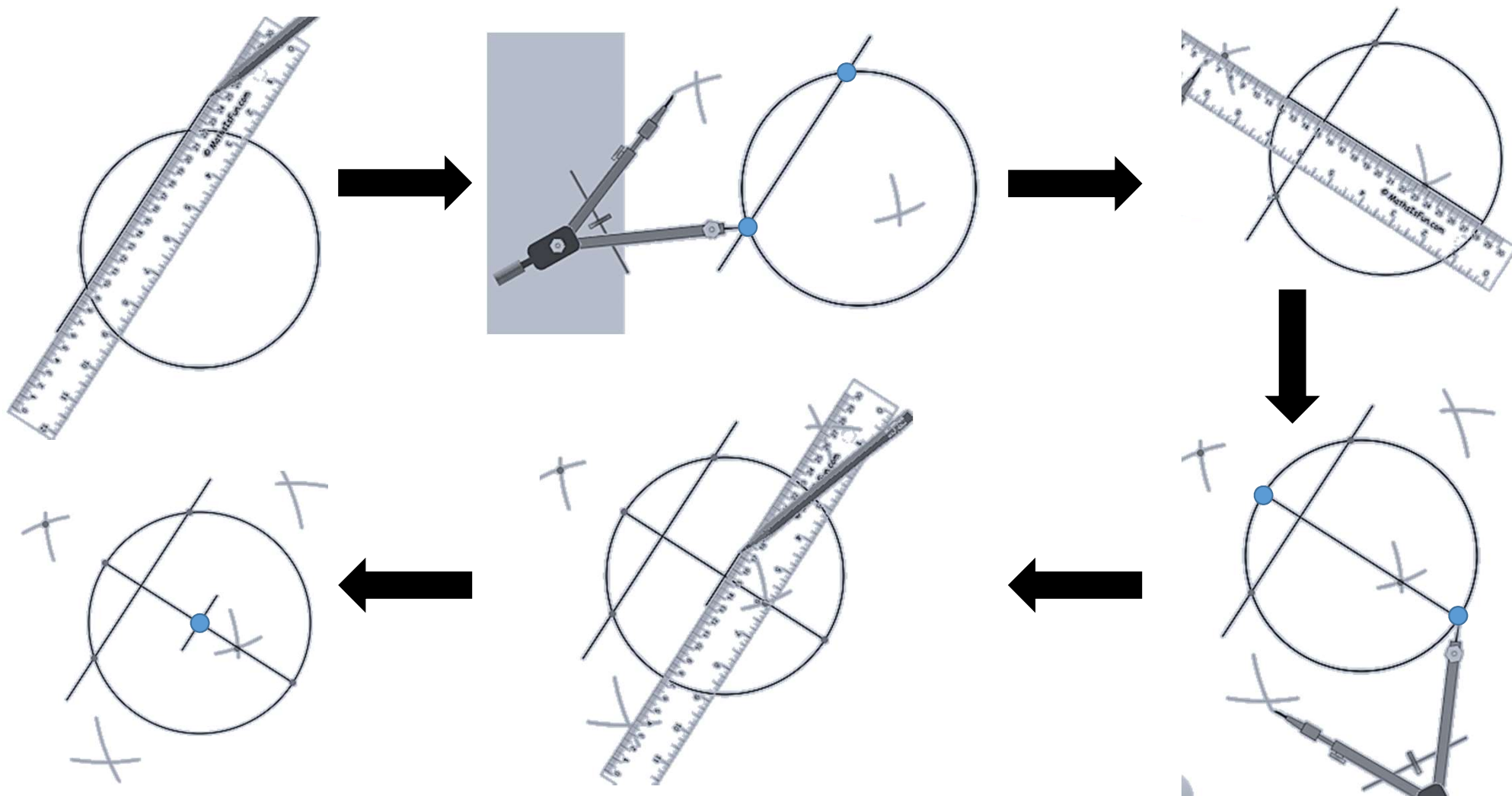
To draw the line parallel to a given line and passes through a given point .follow these steps.

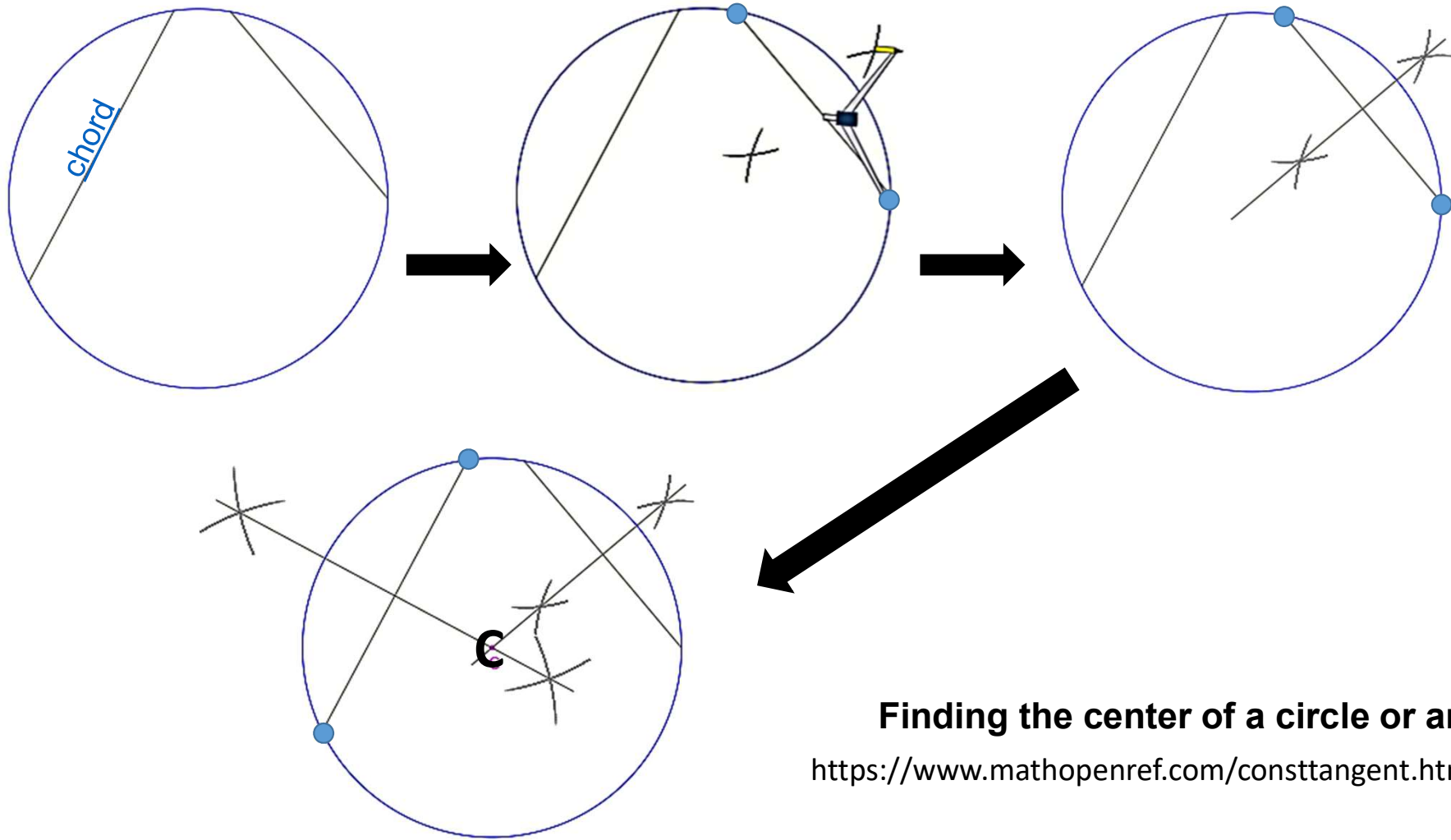


To draw the line parallel to a given line with a specified distance, follow these steps.



## How to construct a Circle's Center





**Finding the center of a circle or arc**  
<https://www.mathopenref.com/consttangent.html>