

## Aquatic Invertebrate

### LAB(4)

Phylum : Mollusca

1- Class : Polyplacophora

Order : Chitonida

Genus : *Acanthochitona*

2- Class : Aplacophora

Order : Neomeniamorpha

Genus : *Neomenia*

3- Class : Monoplacophora

Order : Tryblidiida

Genus : *Neopilina*

4- Class : Gastropoda

Order : Pulmonata

Genus : *Helix*

5- Class : Bivalvia

Order : Eulamella branchia

Genus : *Anodonta*

6- Class : Scaphopoda

Order : Dentaliida

Genus : *Dentalium*

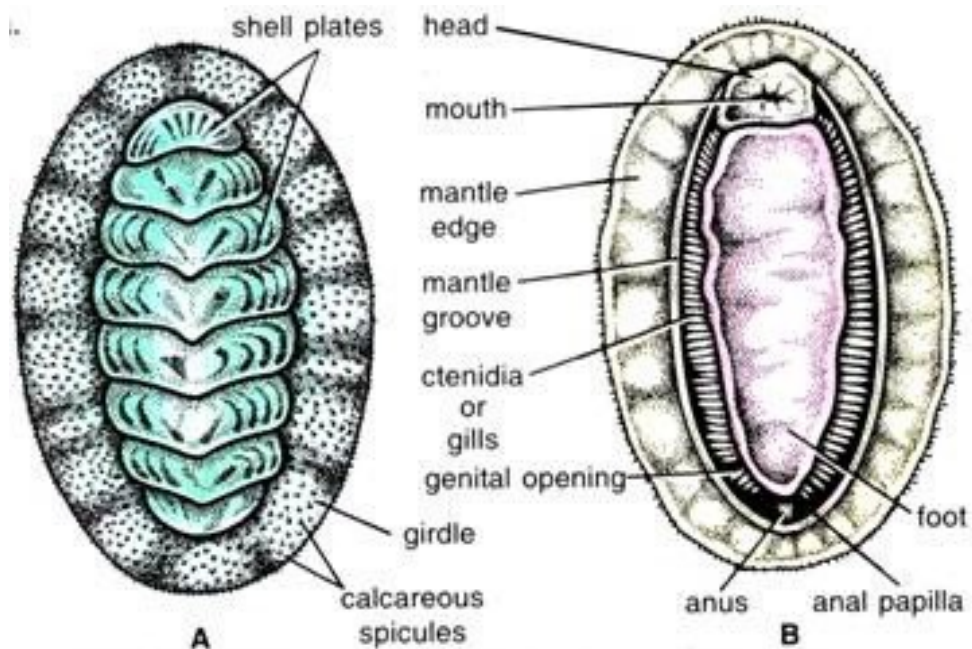
7- Class : Cephalopoda

Order : Dibranchiata

Genus : *Octopus*

**Genus : *Acanthochitona***

- Dorsoventral flattened body
- Dorsal surface bears eight articulating plates
- The mantle forms a girdle around the margin of the plates



**Fig. 62.1. *Chiton*. A—Dorsal view ; B—Ventral view.**

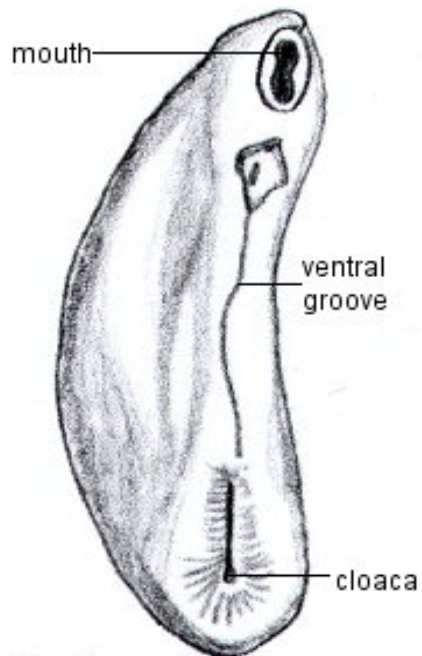
***Acanthochitona***

**Genus : *Neomenia***

The body worm shaped bears numerous calcareous scales embedded in cuticle , there is no true shell



***Neomenia* sp.**



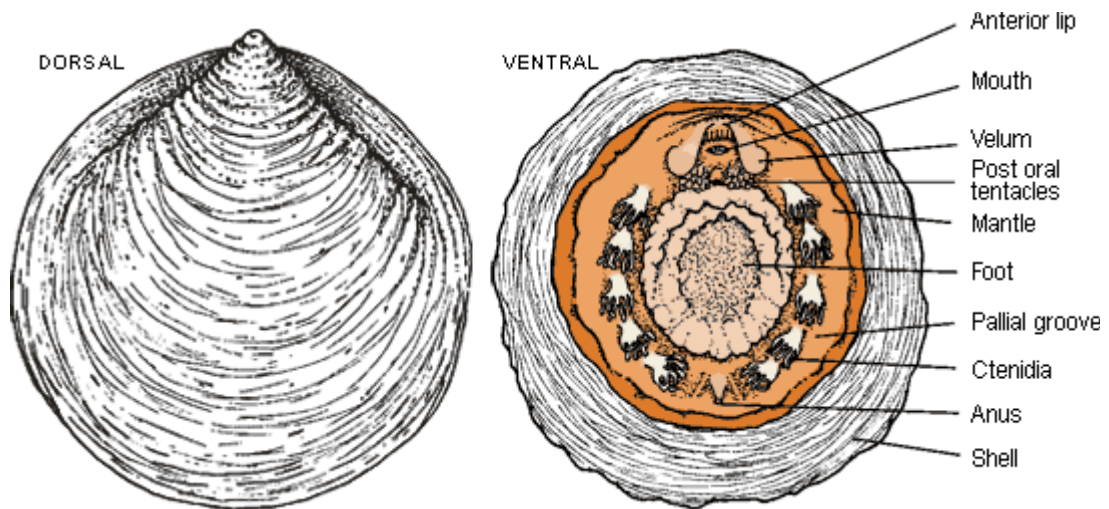
[www.bumblebee.org](http://www.bumblebee.org)

***Neomenia***

**Genus : *Neopilina***

-Single round shell and a creeping foot

-Five pairs of gills in ventral surface



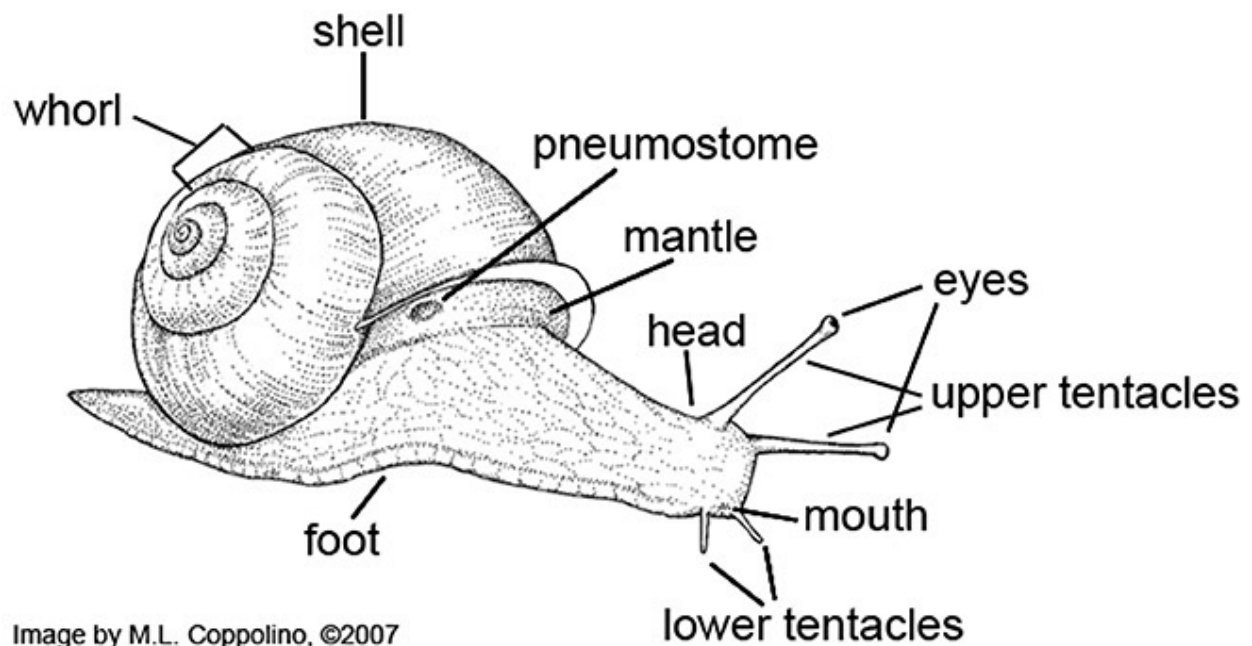
***Neopilina***

## Genus : *Helix*

-Univalve coiled shell

-Head with two pairs of tentacles, the upper and larger pair contain the eyes and the lower pair used for feeling

-Mouth has scraping tongue called radula that is composed of many fine chitinous teeth for rasping and cutting food

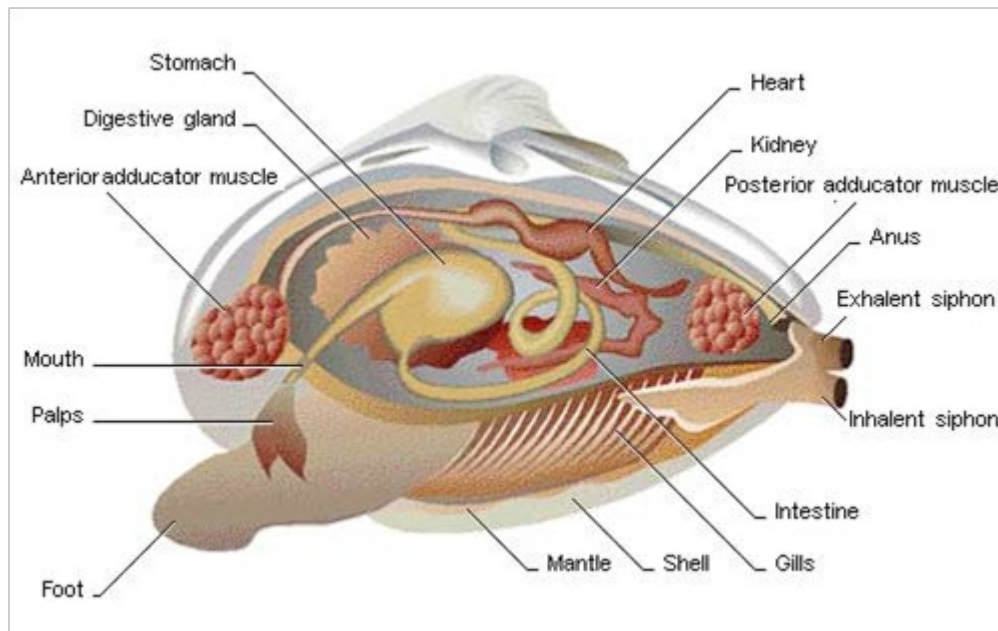


*Helix*



## Genus : *Anodonta*

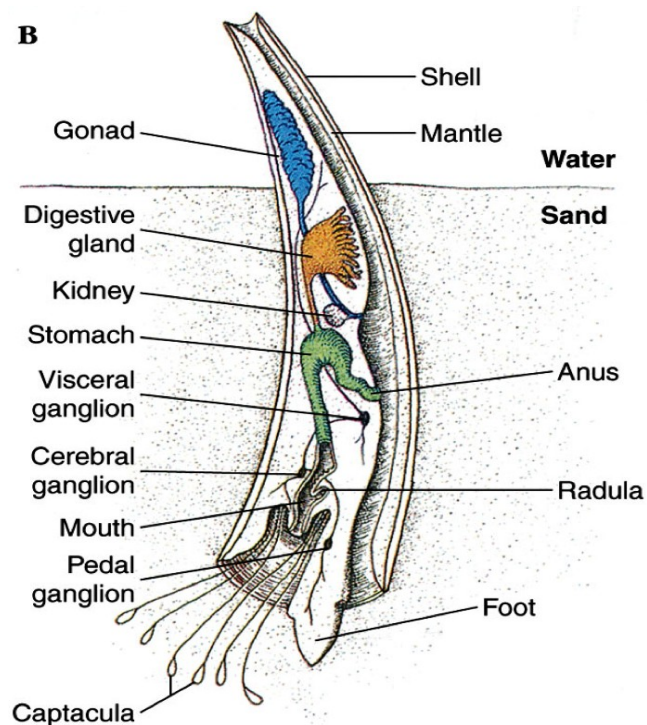
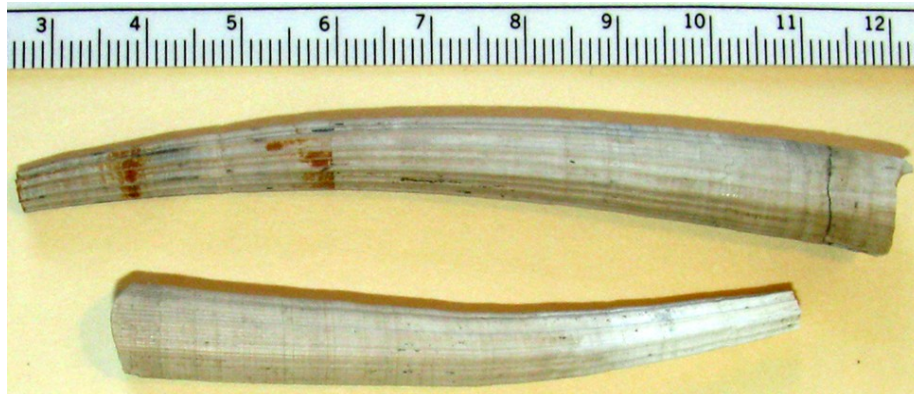
- Shell with two valves held together dorsally by a hinge ligament
- Umbo is the oldest part of the shell and growth occurs in concentric lines around it
- Posterior margin forming siphons for respiration
- No head and radula



*Anodonta*

## Genus : *Dentalium*

- Conical and curved white shell like elephant's tusk . they are hollow and open at both ends
- The foot extends from the larger end of the shell used to burrow through the mud or sand, while leaving the small end exposed to the water above
- Long tentacles extending from the head near the mouth for feeding



***Dentalium***

**Genus : *octopus***

- Globe shaped head with two eyes and four pairs of arms
- Has a sharp peak with its mouth at the center point of the arms
- Two rows of suckers line there tentacles
- No internal or external skeleton

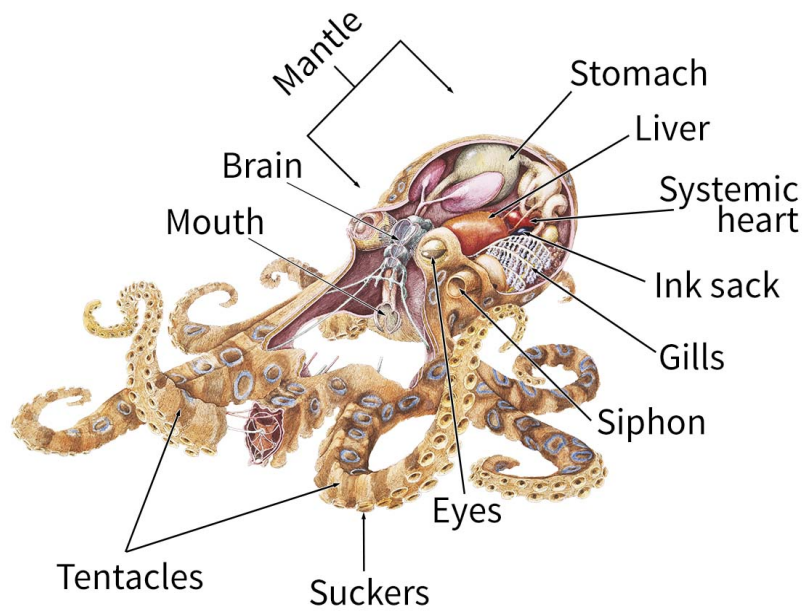
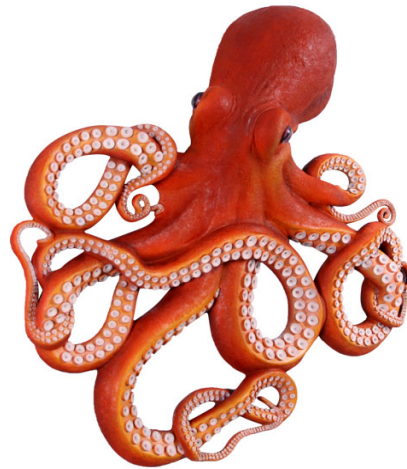


Illustration © Dorling Kindersley | Thinkstock.com.au

***octopus***