

Aquatic Invertebrate

LAB (6)

Phylum : Arthropoda

Sub phylum : Chelicerata

1-Class : Merostomata

Order : Xiphosura

Genus : *Limulus* sp.

2-Class : Pycnogonida

Order : pantopoda

Genus : *Nymphon* sp.

Sub phylum : Chelicerata

- head lack antennae and mandibles

-the body is divided into two region : an anterior cephalothorax (prosoma) and a posterior abdomen (opisthosoma)

- prosoma have two anterior appendages before the mouth called chelicerae and pedipalp for feeding and four pairs of walking legs

Subphylum: Crustacea

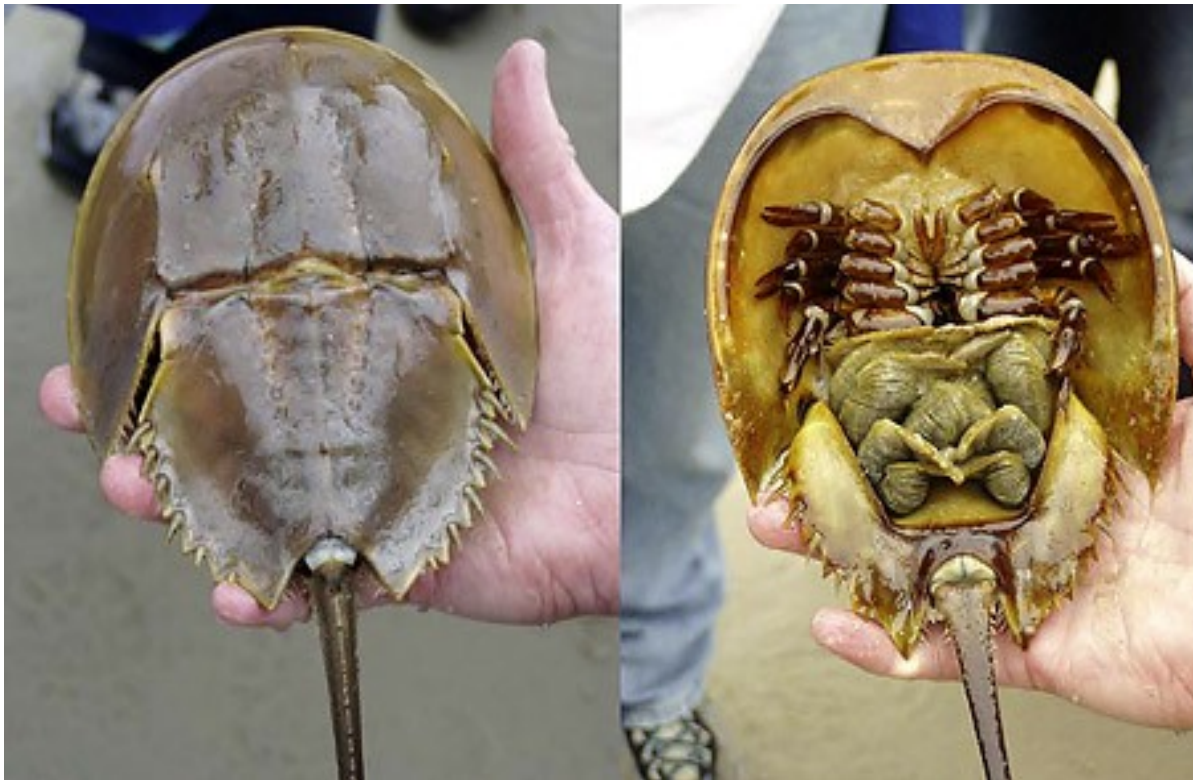
- head with two pairs of antennae and one pair of mandibles

- Body is divided into three regions: head, thorax and abdomen

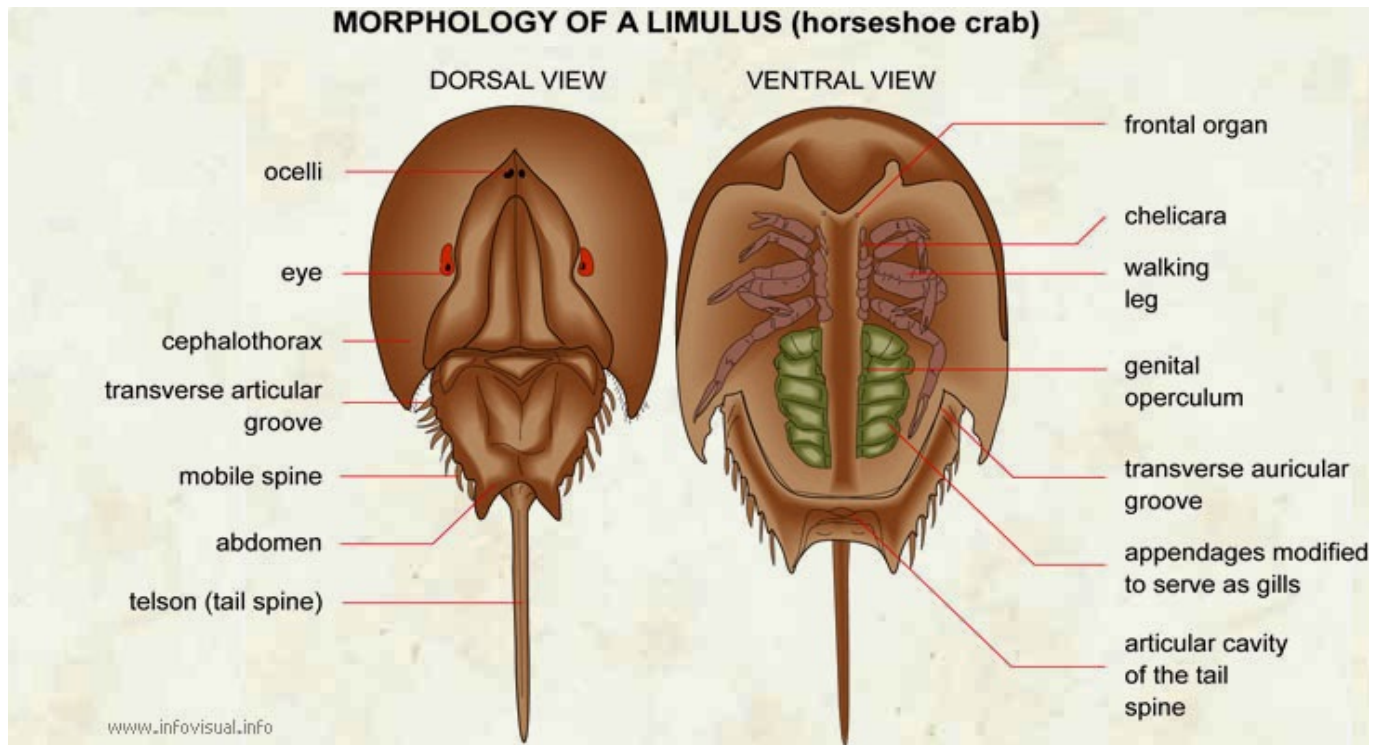
- Thoracic segments bears five pairs of walking legs

Genus : *Limulus* (horseshoe crab)

- The body is divided into an anterior cephalothorax protected by a hard dorsal carapace and posterior abdomen with long straight tail called telson
- It has two compound lateral eyes and seven secondary simple eyes , five eyes on top of its shell and two eyes on the underside
- The mouth is located in the center of the second pair of legs
- Has five pairs of legs for walking , swimming and moving food in to the mouth, each with a claw at the tip except for the last pair
- Underside of the abdomen have six pairs of gill book for respiration



Limulus

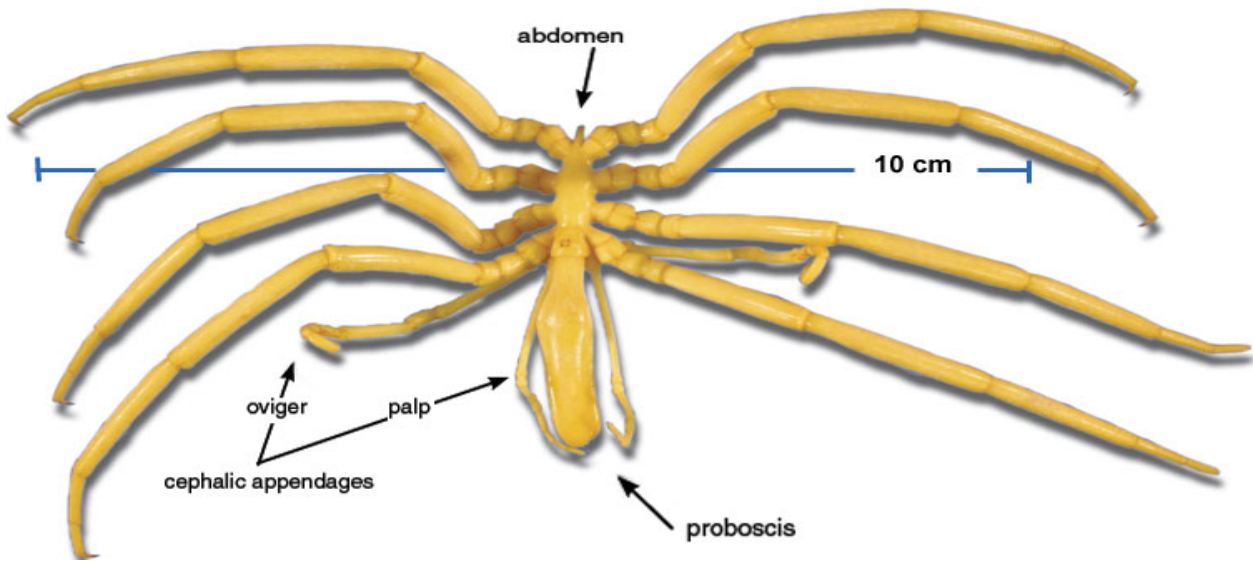


Genus : *Nymphon* sp. (sea spider)

-small and thin bodies with four pairs of long walking legs posterior to the pair of chelicerae and pair of palps

-the head bears a posterior pair of ovigers used by male to carry fertilized eggs

-head with sucking mouth that opens at the tip of elongated proboscis and four simple eyes



Nymphon sp.