

## Aquatic invertebrate

### LAB(8)

Phylum : Hemichordata

Class : Enteropneusta

Genus : *Saccoglossus*

Phylum : Chordata

1-Subhylum : Urochordata

Class : Ascidiacea

Order : phlebobranchia

Genus : *Ascidia*

2-Subhylum : Cephalochordata

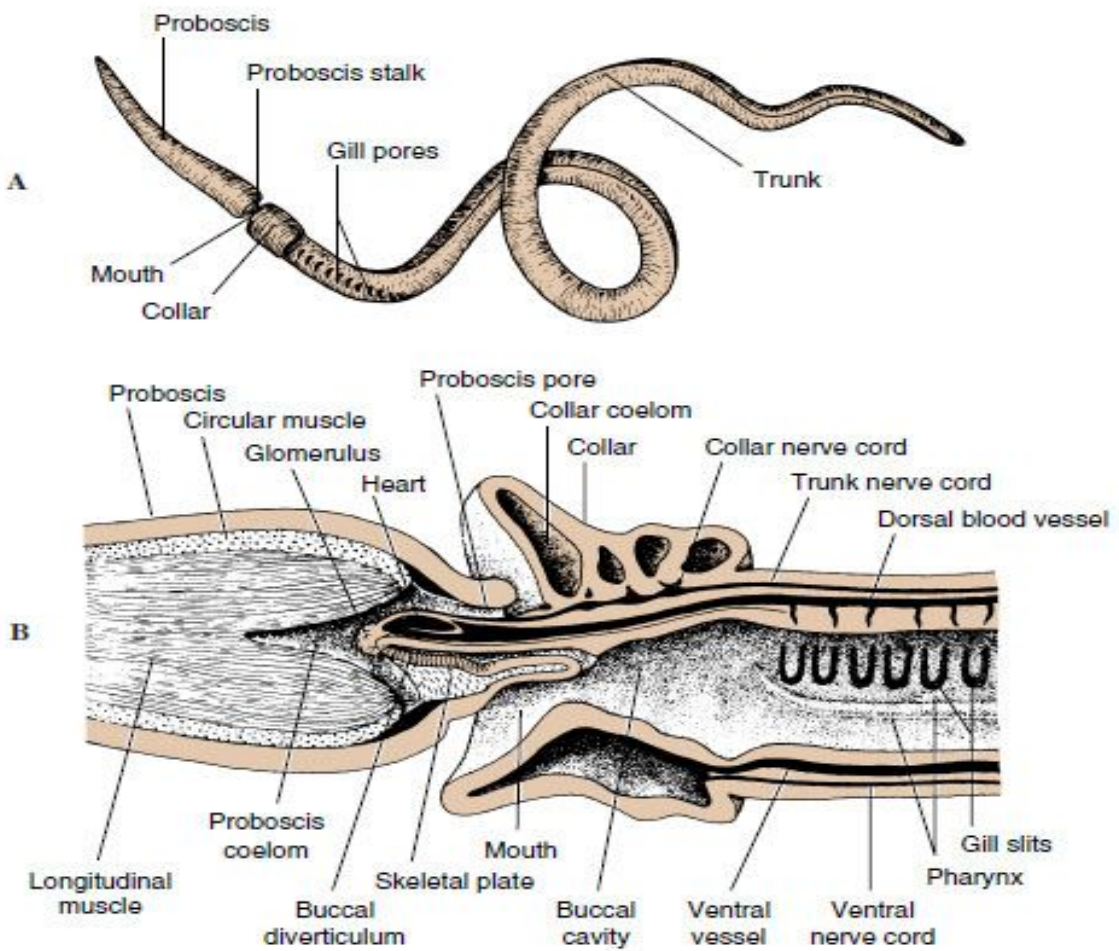
Class : Leptocardii

Order : Amphioxiformes

Genus : *Branchiostoma*

### **Saccoglossus ( corn worm )**

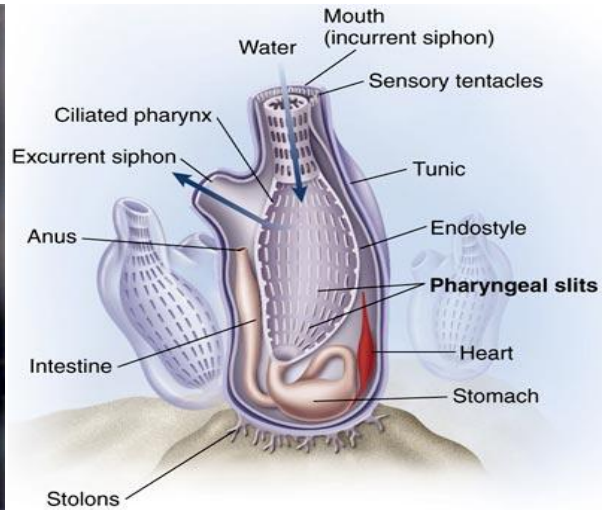
- the body divided into an anterior proboscis , an intermediate collar and posterior trunk .
- the mouth is located between the proboscis and the collar
- proboscis is muscular organ used in locomotion and collection food particles
- trunk is longest part contains the pharynx which is perforated with gill slits



## *Ascidia* (Sea squirt)

- sac like body structure with two tubular opening (incurrent siphon and excurrent siphon )

-body wall is covered by a smooth thick tunic consists of cellulose



## *Branchiostoma*

