

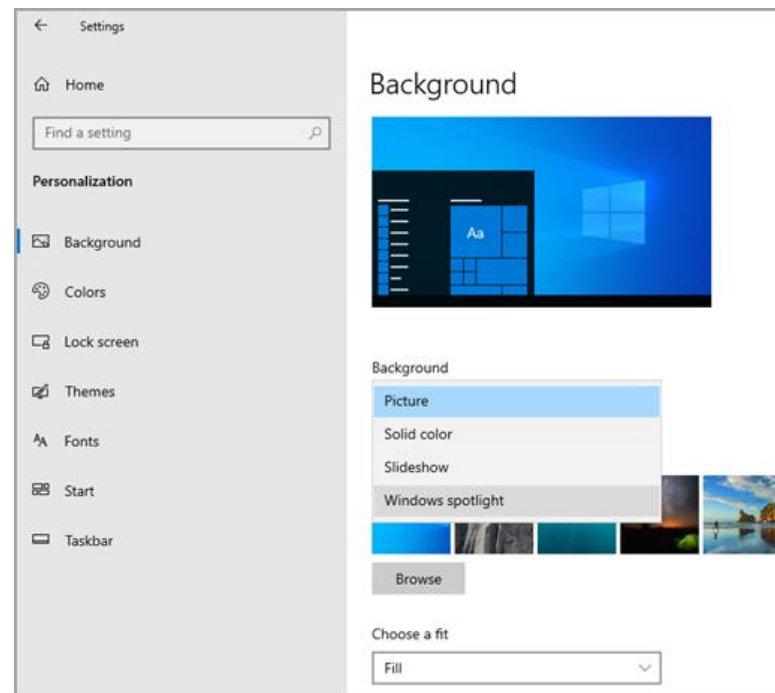
OPERATING SYSTEM AND GRAPHICAL USER INTERFACE PART(2)



UQBA BN NAFAA MOHAMMED
ASSISTANT LECTURER

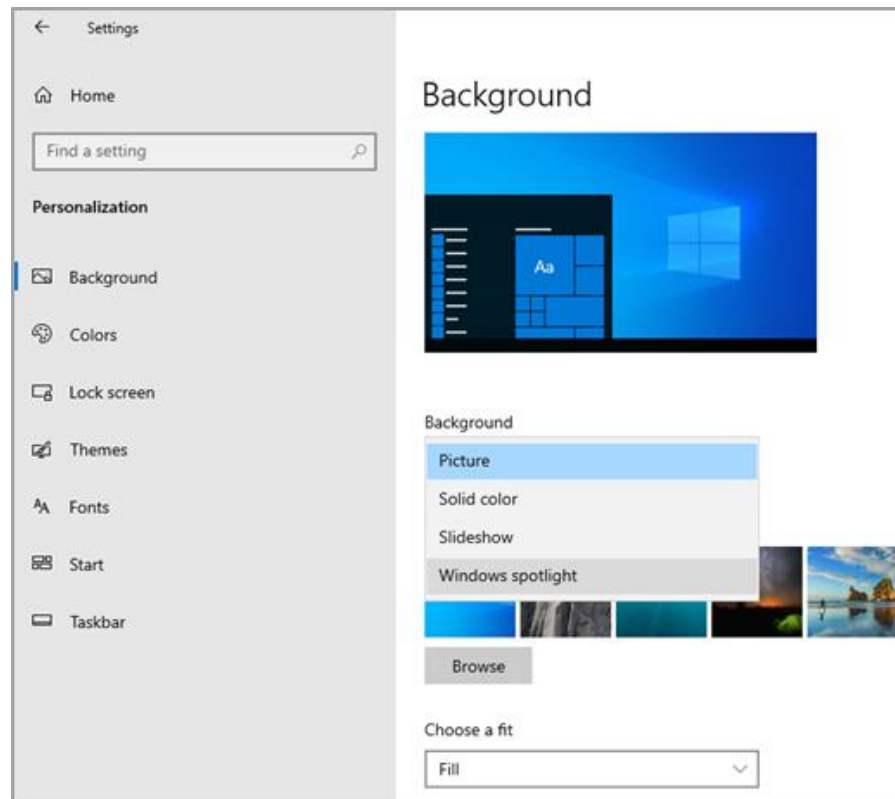
Personalizing the desktop

- Right click any empty part of the desktop.
- Click Personalize.
- Select one of the options (background, colors, lock screen, Themes, Fonts, Start and Taskbar).



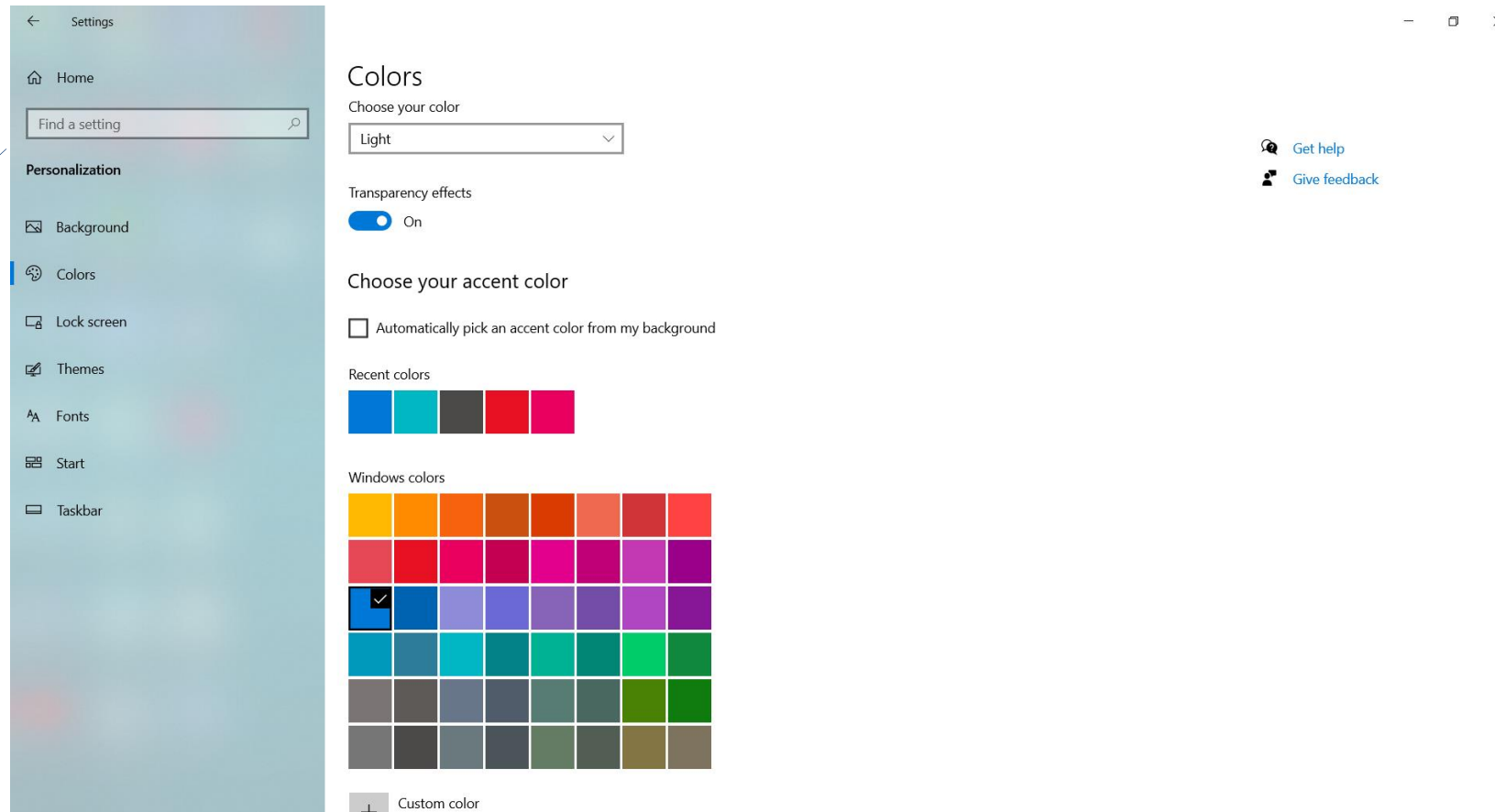
Background

In **Background**, you can select a picture, a solid color, or a slideshow of pictures you create. Or you can choose Windows spotlight to see a new image from around the world every day.



Colors

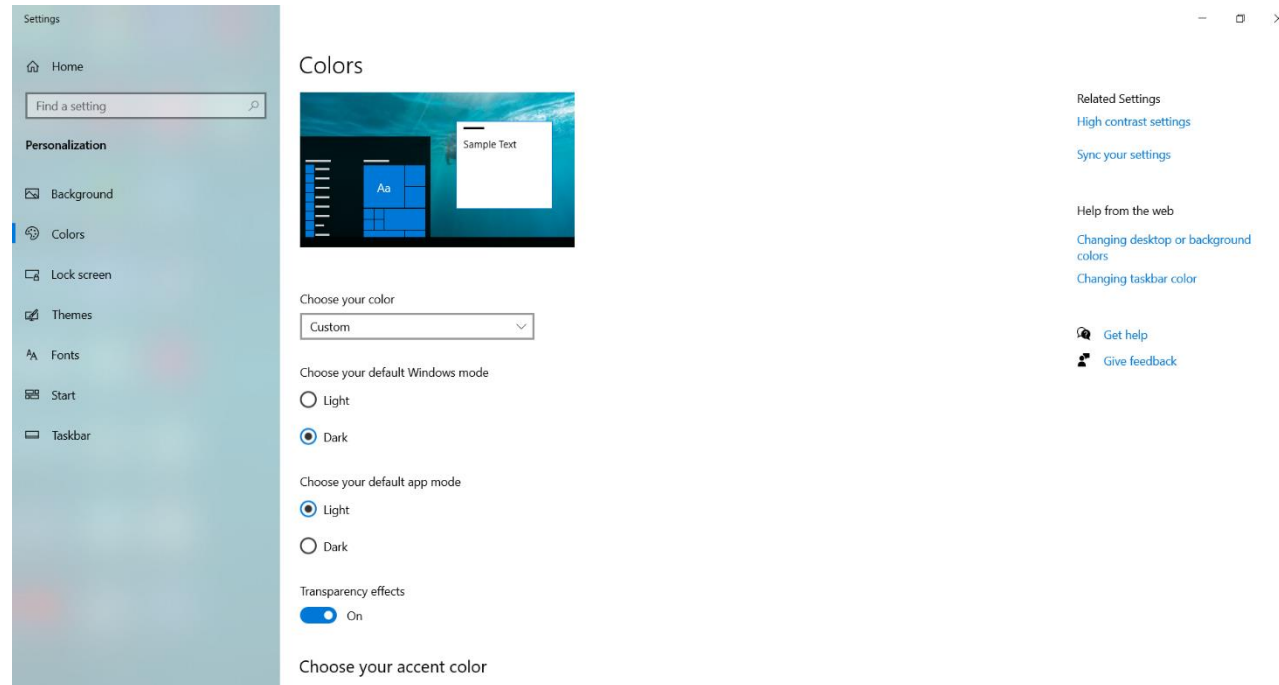
In **Colors**, you can let Windows pull an accent color from your background, or choose your own color adventure.



[Get help](#)
[Give feedback](#)

Colors

After you've selected an accent color, scroll down to decide where you want to see the color show up, and whether it looks better in a dark or light setting.



Desktop Icon Settings

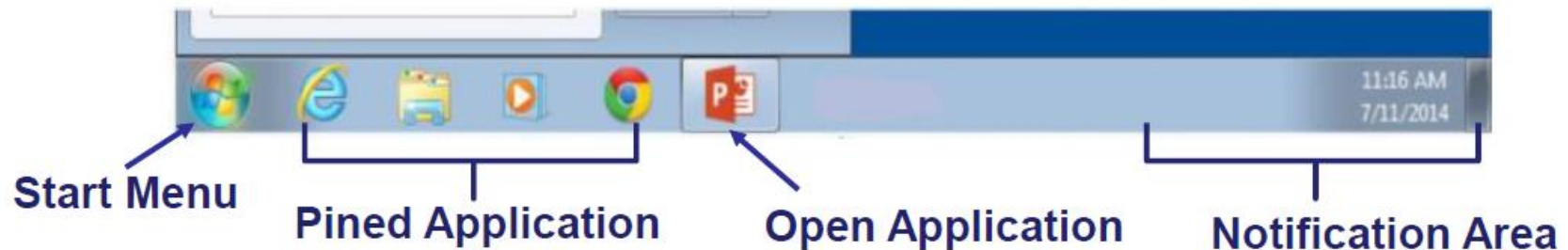
- ▶ Allows to specify which items will appear on the desktop.

Personalization → Themes → Related Settings → Desktop icon settings.

The image shows a Windows Settings window with the 'Themes' section selected. The 'Current theme' is 'Custom'. The 'Desktop Icon Settings' dialog box is open, showing a list of desktop icons with checkboxes: Computer, User's Files, Network, Recycle Bin, and Control Panel. The 'Recycle Bin' is currently set to 'full'. Below the list, there are buttons for 'Change Icon...' and 'Restore Default'. The 'Allow themes to change desktop icons' checkbox is checked. The background of the Settings window shows a 'Flowers' theme with 6 images. On the right side of the Settings window, there are links for 'Related Settings', 'Desktop icon settings', 'High contrast settings', 'Sync your settings', 'Help from the web', 'Get help', and 'Give feedback'.

Taskbar

- ▶ Is a rectangular bar that is usually located at the **bottom of the screen**.
- ▶ It allows to know which programs are running and which programs can be easily accessed by clicking on their icon.
- ▶ From left to right, the areas are: the **start button**, the **taskbar**, and the **notification area**.



Taskbar

- ▶ Is a rectangular bar that is usually located at the **bottom of the screen**.
- ▶ It allows to know which programs are running and which programs can be easily accessed by clicking on their icon.
- ▶ From left to right, the areas are: the **start button**, the **taskbar**, and the **notification area**.

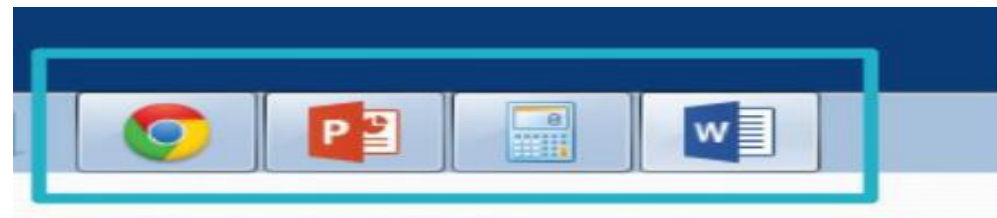


Taskbar

- ▶ **Pinned Applications:** Places a shortcut to the program directly on the Taskbar by right-clicking on any icon in the Start Menu and choosing Pin to Taskbar.



- ▶ **Open Applications:** Clicking that icon will open the program and put a highlight around that icon, showing that a window is now open.



Taskbar

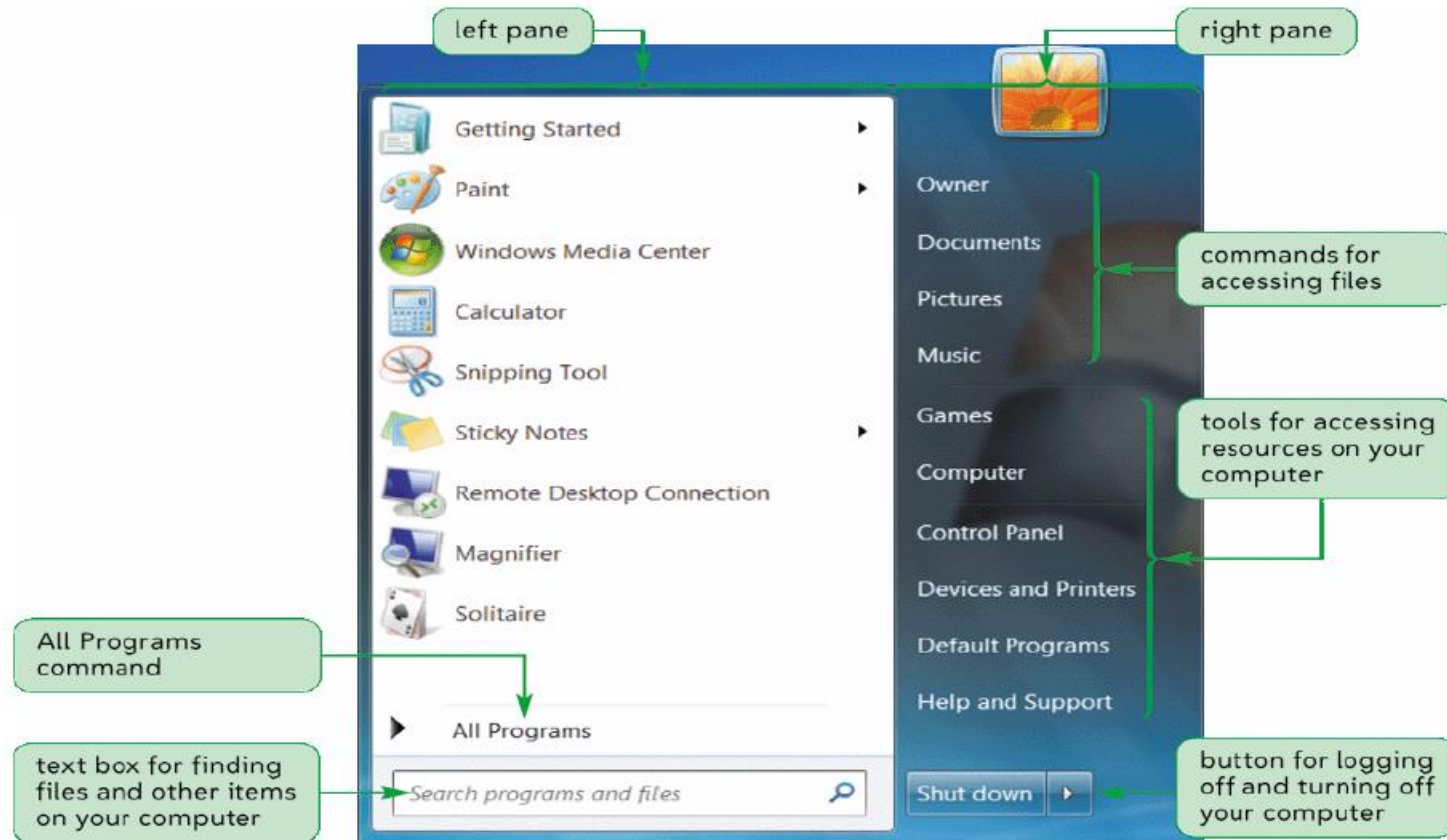
- ▶ **Notification Area:** It is located at the far right of the Taskbar, which is used to show any programs running in the background like the clock, anti-virus, and scheduling programs.





Start Menu

Is the main gateway to your computer's programs, folders, and settings. To begin it, click the Windows Icon button in the bottom left corner or press the Windows key on your keyboard.





Start Menu

- **Pictures:** Users can find all of their pictures stored in this location.
- **Music:** Users can find all of their music stored in this location.
- **All Programs Menu:** Store most installed programs on the computer.
- **Search programs and files:** It allows quick search of files, folders and programs on the entire system.
- **Help and Support:** Takes you to the Windows 7 Help Center.
- **Devices and Printers:** Allow to view the printers and devices currently installed on the system.
- **Control Panel:** It allow quick access to the programs that do everything from removing programs to adjusting mouse settings and setting up a firewall.



Shutting Down

- **Shutting Down:** Click the Shut down button to turn off the computer.
- **Restart:** It saves the information, shuts down the computer for a moment, and then turns it back on again.
- **Sleep:** It puts the computer in a low power state, but does not turn it off.
- **Lock:** Entering the password when returning, helping to keep the work more secure.



Free Software

Windows includes a large set of simple programs that make it easy to finish daily task.

- **Calculator:** Contains both a simple and scientific calculator.
- **Command Prompt:** access to the old DOS style command window.
- **Notepad:** this is a simple text editor, mainly used to type a few notes.
- **Paint:** a simple image editing and creation program.



Thank
You

FOR
LISTENING