



2/3

F31

Physical_Chemistry_2nd_YUGS_EV_ST

40/100 Found



Name of a student Signature No. B3
Mustansiriyah University
Department of Chemistry

2nd SEM-2026_Bologna_Process
Mid_Exam_Class_A_Paper_B

Q1/ MCQ test (Answer the following)

(Marks 50 %)

1: Which two variables does the Gibbs phase rule consider as independent??

Answer: a) p & T b) F & T c) p & conc. d) T & conc.

2: If NaCl is added to ice, which property of the solution increases?

Answer: a) FP b) VP c) FP d) BP

3: At what pressure do the three phases of CO₂ coexist in the phase diagram?

Answer: a) at 1 atm b) over 1 atm c) below 1 atm d) at any pressure

4: Which phase corresponds to a supercooled substance?

Answer: a) gas b) liquid c) solid d) plasma

5: How many phases are present when a one-component system has two degrees of freedom?

Answer: a) zero b) 1 c) 2 d) 3

6: The Clausius equation can be applied to which of the following phase equilibria?

Answer: a) melt. & freez. b) frees. & melt. c) vap. & cond. d) all of these

7: What is the relationship between the VP of a solution and the solute molality?

Answer: a) direct b) inverse c) disordered d) none of these

8: Which type of solute, when added to a solvent, alters its colligative properties?

Answer: a) non-volatile solute b) volatile solute c) pure solute d) pure solvent

9: In osmosis, the solvent moves toward which component?

Answer: a) solute b) impure solute c) mixture d) pure solvent

10- One of the most important applications of measuring molar mass of the solute is to study the change in ---.

Answer: a) m b) Π c) V d) p

Q2/ 0.5 mol of a non-P-solute was added to 12.0 mol of P-solvent, VP^* is 12.0 kPa at 295 K. What is the VP at 295 K? Determine the deviation of this solution from Raoult's law where $VP_{ideal} = 10$ kPa. (Marks 25%)

Q3/ Plot the phase diagram of the system (α and β) assumed that (α and β) do not react with each other. α freezes at (-7 °C) and β freezes at (10 °C), and that a eutectic mixture is formed when the ratio is 30 wt % of β and that the eutectic melts at (-10 °C), then label all the parts (p & F) of the diagram using the appropriate phase rule?

(Marks 25%)

Q2

$$P_X = \frac{n_{\text{solvent}}}{n_{\text{solvent}} + n_{\text{solute}}}$$

wrong eq

سے ابوتی ہے ایسا 0.5
سے ابوتی ہے ایسا 2.0

~~.....~~
تھوڑا سا ہی
10 kPa

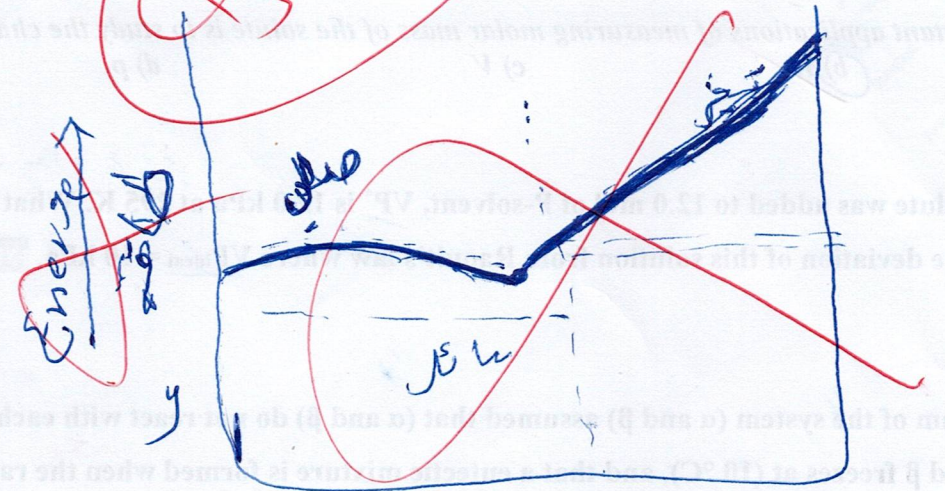
$$P = X \cdot P^* = 0.96 \cdot P^*$$

x

Q2
~~.....~~

Q3

Q3
~~.....~~



$$F = C - P + 1$$

Temperature