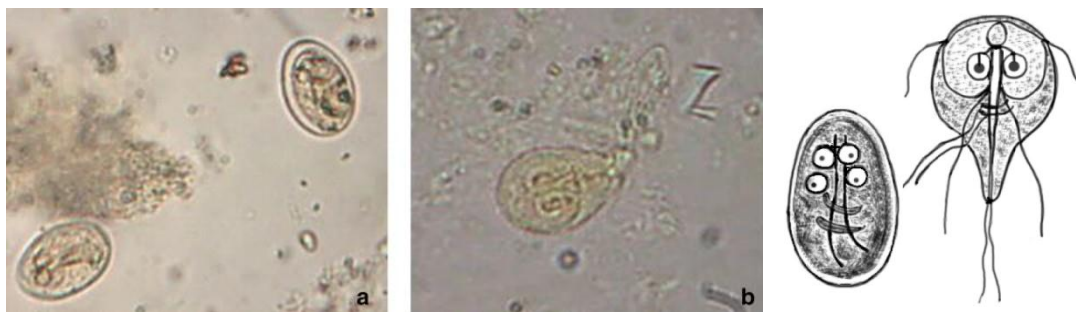


DETECTION OF SPECIFIC INTESTINAL PROTOZOA

Giardia lamblia (syn. *Giardia intestinalis* and *Giardia duodenalis*).

Giardiasis is a common gastrointestinal parasitic infection associated with diarrhea, stomach cramps, upset stomach, and excessive gas. Giardia cysts can be observed in:
 1-fresh smears, on formalin-ethyl acetate. 2- permanent stained smear.

Trophozoites are not always found in stool, as encystation begins before passage through the colon.

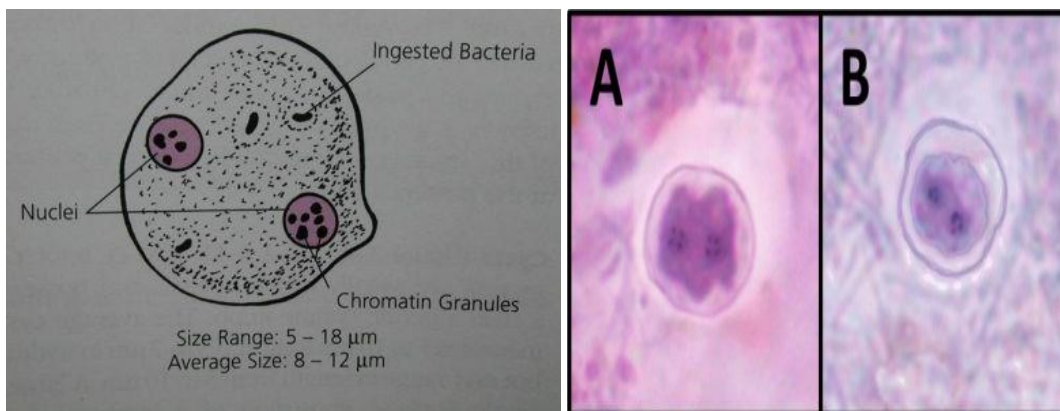


=====

Dientamoeba fragilis.

Dientamoebiasis is an enteric infection caused by the flagellate *D. fragilis*.

Symptoms :nausea, vomiting, and diarrhea containing mucous , abdominal discomfort, while others are asymptomatic.



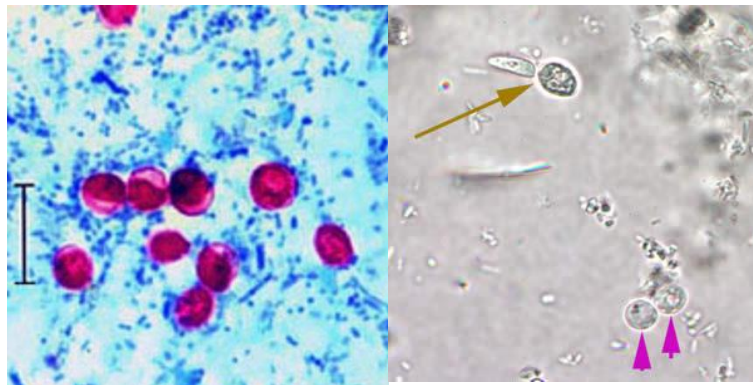
=====

Cryptosporidium spp.

Cryptosporidiosis is a gastrointestinal infection caused by various species of *Cryptosporidium*.

Transmission: 1- Fecal-oral transmission via contaminated food, drinking water 2- exposure in public swimming pools is responsible for most infections.

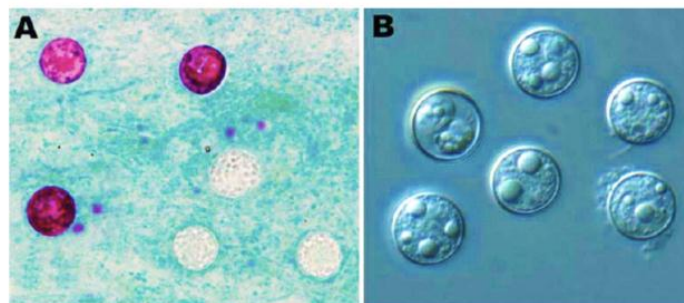
Like all coccidian intestinal parasites, the small and poorly staining *Cryptosporidium* oocysts can be easily missed in routine O&P exams. Sensitivity of light microscopy is improved by performing modified acid-fast stains



=====

Cyclospora cayetanensis.

Cyclosporiasis is usually a self-limiting gastroenteritis caused by the coccidian *C. cayetanensis*. Due to poor uptake of most conventional stains by *C. cayetanensis* oocysts, microscopic detection can be challenging, but it remains the recommended diagnostic method

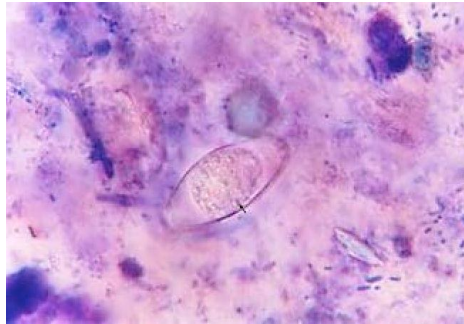


Microscopic appearance of *Cyclospora cayetanensis* oocysts
Source: Emerging Infectious Diseases • www.cdc.gov/eid • Vol. 17, No. 10, October 2011

=====

Cystoisospora belli.

Cystoisosporiasis is a relatively uncommon gastroenteritis caused by the coccidian *C. belli* that can result in cholera-like symptoms in up to 1% of HIV-infected or otherwise-immunocompromised individuals. Detection of oocysts from stool or duodenal samples is simplified by their distinctive size and shape.



=====

Balantidium coli.

Balantidiasis is an intestinal parasitic disease that is associated with ciliated *B. coli* trophozoites. Final host: Pig, human and primates dog (rarely), rat. Cycle: Direct (faecal-oral route). Location: Large intestine. Diagnostic: Cyst and trophozoite. Transmission: Cyst

