

A row of white humanoid robots with glowing blue eyes, standing in a line against a light blue background. The robots are sleek and futuristic, with a white and black color scheme and glowing blue eyes. The background is a soft, light blue gradient.

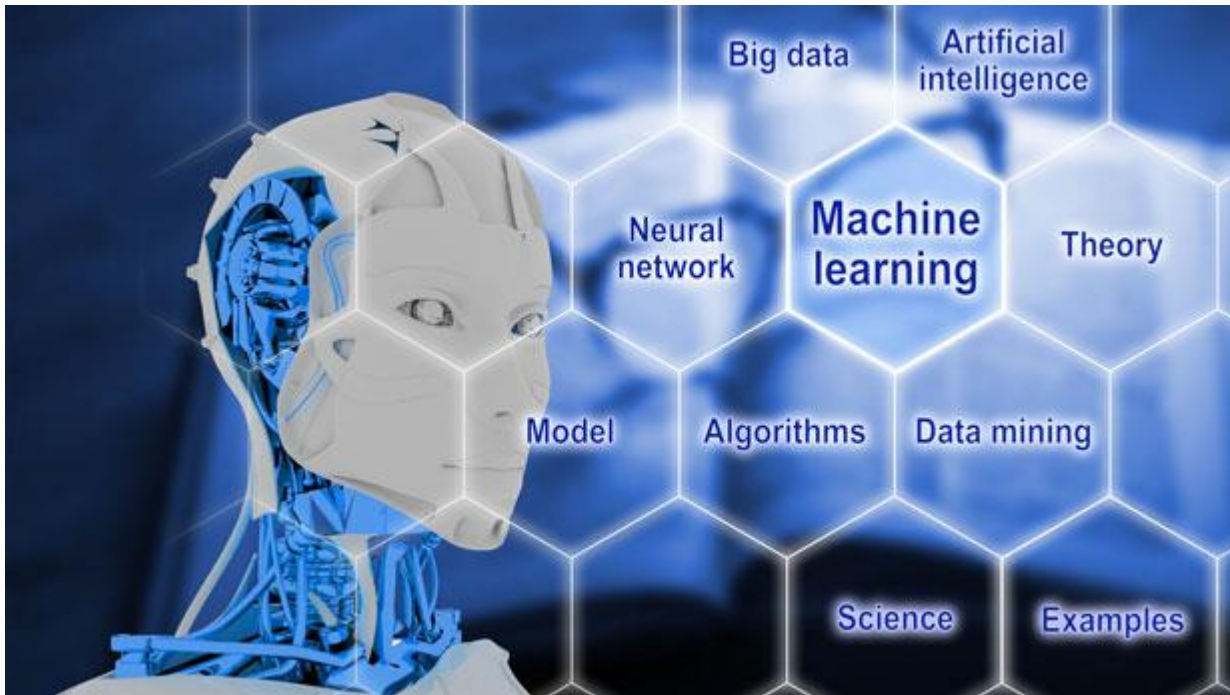
# *Introduction to Machine Learning*

Prepared by Iman Hussein

# Preview

- ◆ **Introduction**
- ◆ **What is Machine Learning**
- ◆ **Human and Robot**
- ◆ **Definition of Machine Learning**

# What is Machine Learning ?



# Human and Robot

Human are thinking

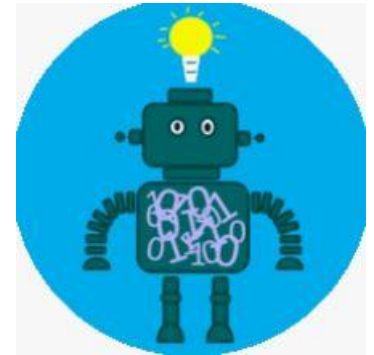


robot is running out



# Definition of Machine Learning

- It is to make the machine learn by itself without human direction.
- Learning machines to do the tasks themselves.
- Machine learning concludes a model for solving future problems, By extracting a code for it.





## **Any Question?**

**Dear students.**

**Please, contact via Google Classroom**