

Lab: 5

Muscle tissue

Classification of Muscle tissues

a. Skeletal muscle

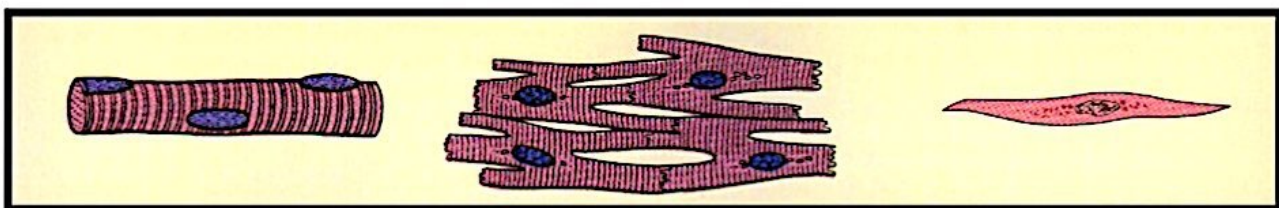
- 1) Striated and voluntary
- 2) Found mostly attached to the skeleton
- 3) Nuclei are peripherally located

b. Cardiac muscle

- 1) Striated and involuntary
- 2) Composes the majority of the heart wall (myocardium)
- 3) One central nucleus

c. Smooth muscle

- 1) Non striated and involuntary
- 2) Found mostly in the walls of hollow organs and vessels
- 3) One central nucleus



Skeletal muscle

Cardiac muscle

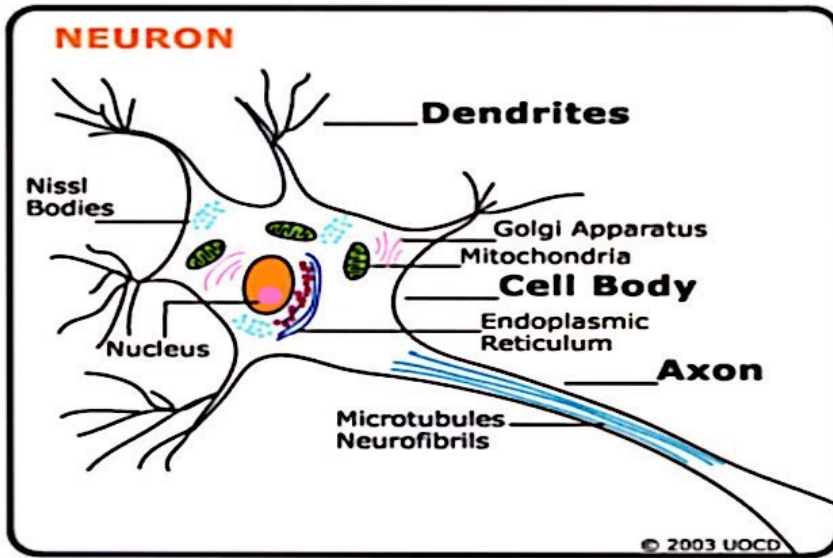
Smooth muscle

Nervous tissue

Is a tissue that are specialized for receiving different types of stimuli.

Neuron Consists of:

- **Cell Body** : contains Nucleus, Mitochondria, Nissl bodies
- **Dendrites**: highly branched extensions of the cell body. Conduct impulses towards the cell body
- **Axon**: a single long process. Conducts impulses away from the cell body.



Structural of Neurons:

1. **Multipolar neurons**: more than two processes one is the axon and the rest are dendrites
2. **Bipolar neurons**: have two processes one is axon and other one is dendrites
3. **Pseudo unipolar neurons**: have a single process close to the perikaryon.

