

## Lab(3)

Kingdom: Protista

Subkingdom: Protozoa

Phylum: Sarcomastigophora

2-Subphylum: Ciliophora

Class: Ciliata

Order: Euciliata

Genus: *Balantidium coli*

3- Subphylum: Mastigophora (Flagellates)

Class: Zoomastigophora

Order: Diplomonadida

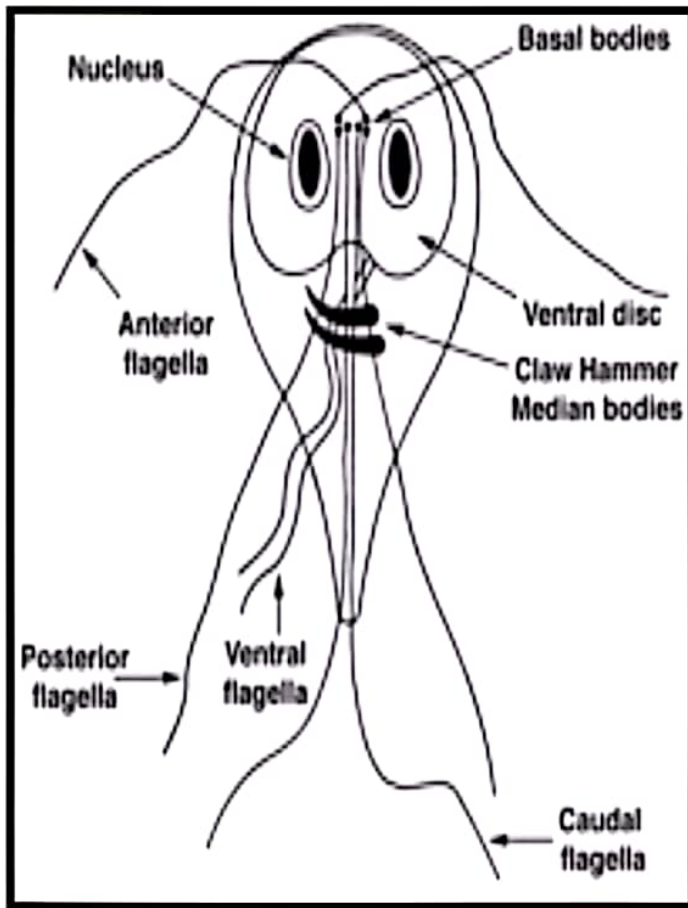
Genus: *Giardia lamblia* , *Trichomonas vaginalis*

*Balantidium coli*

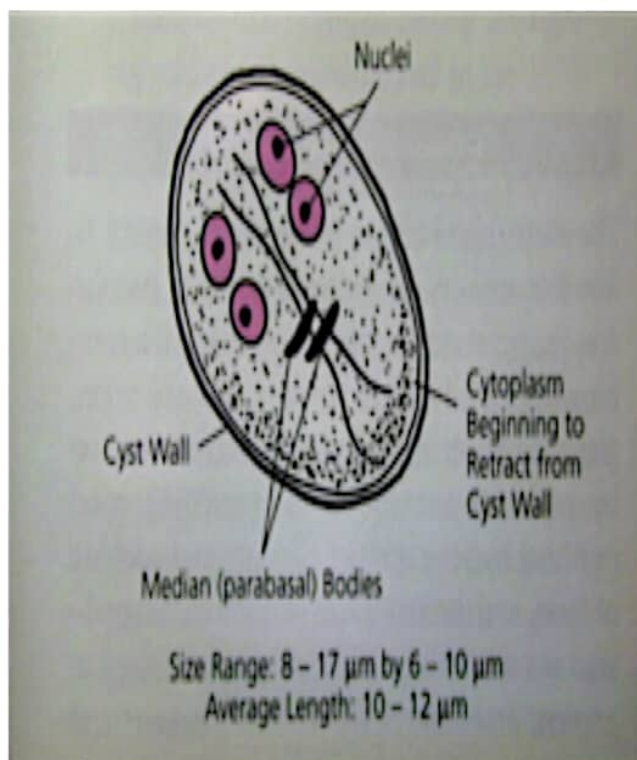
**Disease name:** Balantidiasis , Balantidil dysentery

**Site of infection:** Large intestine, cecum and terminal ileum

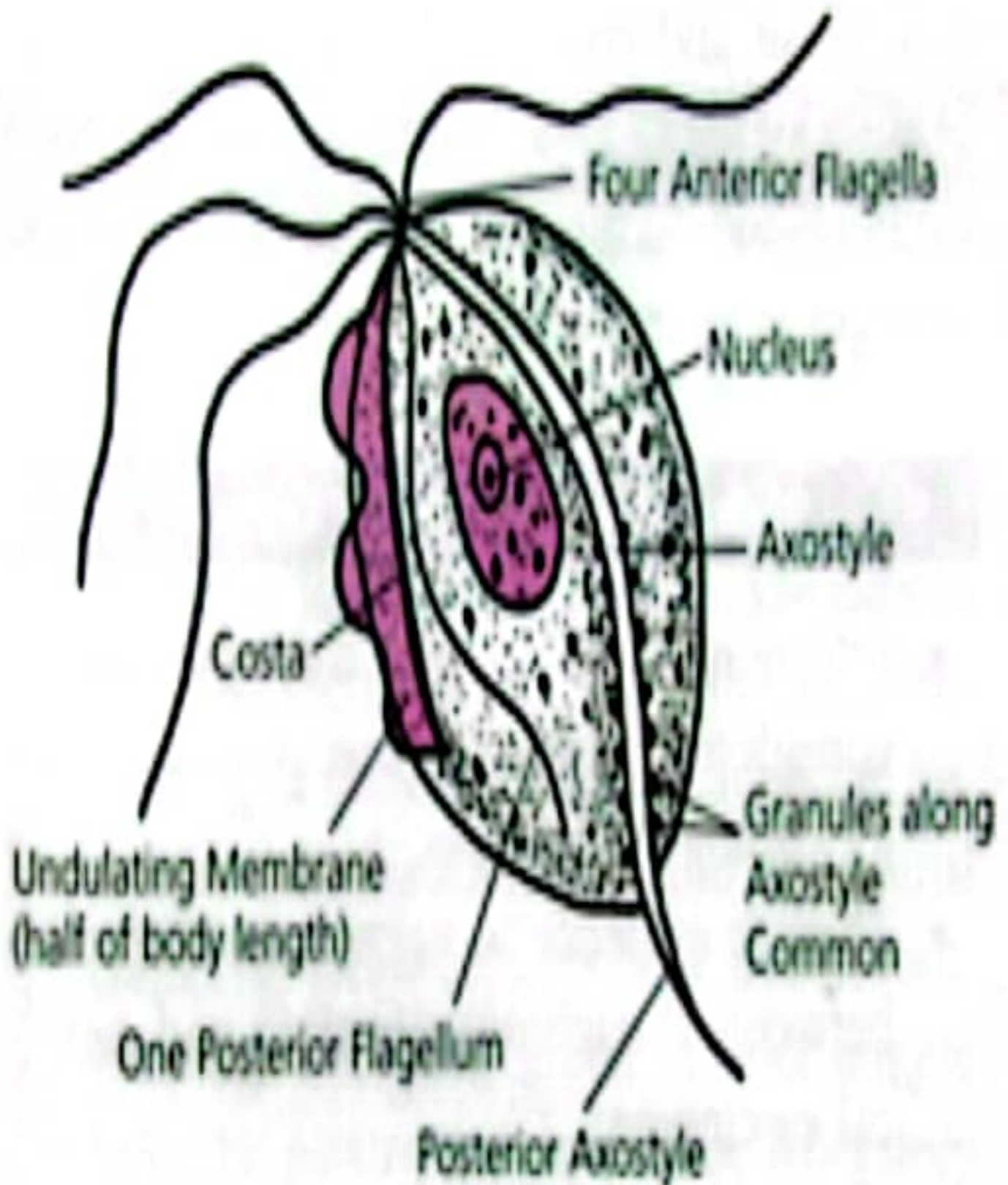




Giardia lamblia trophozoite



cyst Giardia lamblia



Size Range: up to 30  $\mu\text{m}$  long  
Average Length: 8 - 15  $\mu\text{m}$